



IBM® Tivoli® Storage Manager 5.4

*Upgrading from IBM Tivoli Storage Manager Express to
IBM Tivoli Storage Manager 5.4 Enterprise*

Tivoli. software



© 2007 IBM Corporation
Updated July 20, 2007

Objectives

Upon completion of this module, you will be able to:

- Explain the benefits of upgrading
- Perform the upgrade process
- Define what you need to know after upgrading

Contents of this presentation

- Benefits of upgrading
- Upgrade process
- What you need to know after upgrading

Upgrade benefits

- Enables an upgrade from IBM Tivoli Storage Manager Express to IBM Tivoli Storage Manager enterprise, preserving the data backed up by Tivoli Storage Manager Express and the Express configuration settings
- Gives Express users enough information during the Tivoli Storage Manager 5.4 installation process to prepare appropriately for the upgrade
- Keeps the Express administrative interface available after the upgrade
- Provides documentation that bridges the gap between the skills learned in Express and what skills are needed to start working in enterprise



Client upgrade overview

- Tivoli Storage Manager 5.4 client added the ability to easily upgrade from Tivoli Storage Manager Express to Tivoli Storage Manager enterprise.
 - ▶ The client is installed as Tivoli Storage Manager Express; Express client view displayed.
 - ▶ The first time the Tivoli Storage Manager 5.4 client connects to a Tivoli Storage Manager 5.4 server after it has been upgraded from Express, a confirmation prompt will be displayed.
 - ▶ You can change the CLIENTVIEW option (Express or standard) in preferences editor.
- Tivoli Storage Manager 5.3.3 client (first release of Express client) will continue to work in Express mode to an upgraded Tivoli Storage Manager 5.4 server.
- Non-Express clients will also work with Tivoli Storage Manager 5.4 servers upgraded from Express.

Requirements

- Standard Tivoli Storage Manager 5.4 hardware requirements must be met.
- If you plan to continue using the Express administrative interface, you need to download and install the latest Tivoli Storage Manager Express interim fix before upgrading.
- To access the new online help information, the ISC and the Administration Center must be installed.
- Currently, the Tivoli Storage Manager Express server only runs on Windows Server® 2003, so the upgrade is Windows-specific. There are only two upgrade paths: 32-bit Express to 32-bit enterprise and 64-bit Express to 64-bit enterprise (x64 only).

What is affected by the upgrade

- During an upgrade installation, some existing Express components are updated or removed, while others are not. These are affected by the upgrade:
 - Express server
 - ▶ This package is different than the enterprise server. During the upgrade, this package is removed, and the enterprise server is installed in its place. Database, log, and file-pool information are preserved, along with all configuration data related to the Express server. To prevent accidental upgrades, the enterprise installation automatically detects the Express server package and displays a confirmation panel
 - Licensing
 - ▶ The Express license package is not compatible with enterprise. When the enterprise license is installed, it automatically upgrades the Express license

What is not affected by the upgrade

- Administrative interface
 - ▶ Consists of the base WebSphere®, with desktop icons and Start menu items to launch the interface. This interface can coexist with the ISC and the administration center
- Tivoli Storage Manager Device driver
 - ▶ The Tivoli Storage Manager base device driver is the same as the Express device driver. You will only need to install a new version of the device driver, if one is available, and it will automatically upgrade whatever version is installed
- Tivoli Storage Manager client
 - ▶ The Tivoli Storage Manager enterprise client is the same as the Express client
- Language packs (optional)
 - ▶ Both the client and server language packs are the same for Express and enterprise. Again, if a newer version is installed, it will upgrade whatever version is installed

Server upgrade process

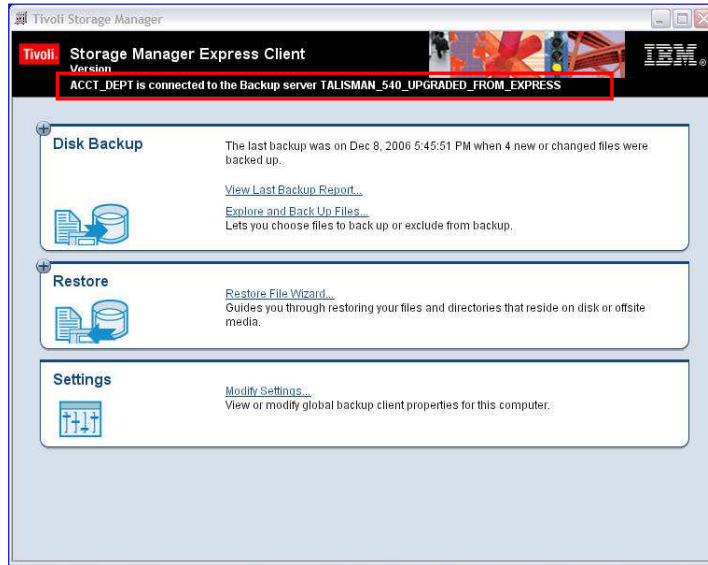
Basic upgrade process:

1. Install the Express interim fix (best practice)
2. Make sure the Express database is backed up
3. Stop the Express server service
4. Install Tivoli Storage Manager enterprise
5. As with a standard upgrade, start the Tivoli Storage Manager Server1 service

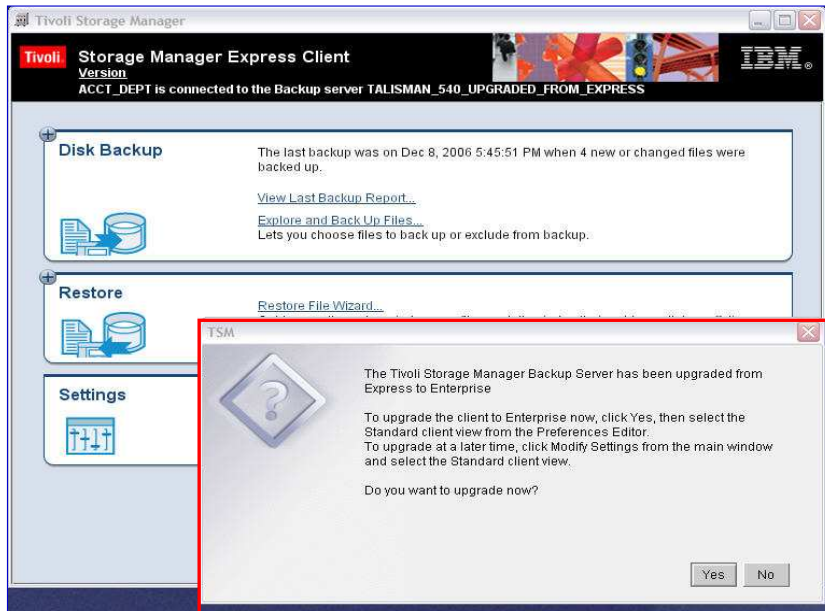
Commands

- **No updates were made to the Administration Center interface to support Express-specific functions.**
- **The following Express commands will be available for Tivoli Storage Manager enterprise:**
 - ▶ **QUERY DIRSPACE**
 - ▶ **DEFINE NODEGROUP**
 - ▶ **DEFINE NODEGROUPMEMBER**
 - ▶ **DELETE NODEGROUP**
 - ▶ **DELETE NODEGROUPMEMBER**
 - ▶ **UPDATE NODEGROUP**
 - ▶ **QUERY NODEGROUP**
- **QUERY NODE F=D now displays a NODEGROUP parameter.**

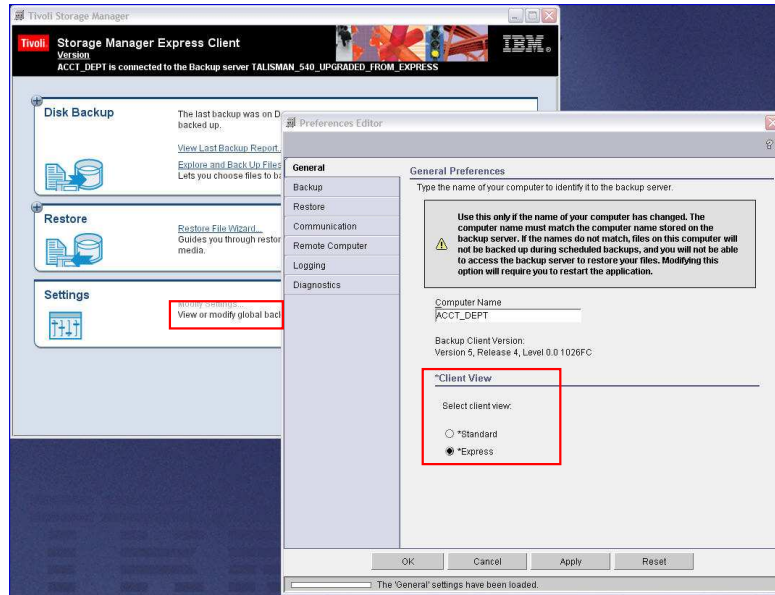
Client upgrade comment



Client upgrade comment (cont.)



Client view selection



Client view option

```
*****
*!!          TSM EXPRESS OPTIONS FILE          !!
*****
*!!          DO NOT EDIT OR CHANGE THIS FILE MANUALLY          !!
*!!          USE PREFERENCE EDITOR TO MAKE CHANGES          !!
*****
TCPSEVERADDRESS 127.0.0.1
TCPSPORT 1500
NODENAME derkfinity
PASSWORDACCESS GENERATE
COMPRESSION on
SCHEDMODE PROMPTED
MANAGESERVICES SCHEDULE WEBCLIENT
CLIENTVIEW EXPRESS
exclude.compression ?:\...\*.jpg
exclude.compression ?:\...\*.jpeg
exclude.compression ?:\...\*.zip
exclude.compression ?:\...\*.mp3
exclude.compression ?:\...\*.gif
exclude.compression ?:\...\*.cab
SCHEDLOGRETENTION 14 D
ERRORLOGMAX 100
EXCLUDE.DIR ?:\RealTimeBackup
WEBPORTS 1582,1584
EXCLUDE ?:\...\D?????.DBV
EXCLUDE ?:\...\L?????.LOG
EXCLUDE ?:\...\*.OST
EXCLUDE ?:\...\*.BFS
EXCLUDE ?:\...\*.DEB
```

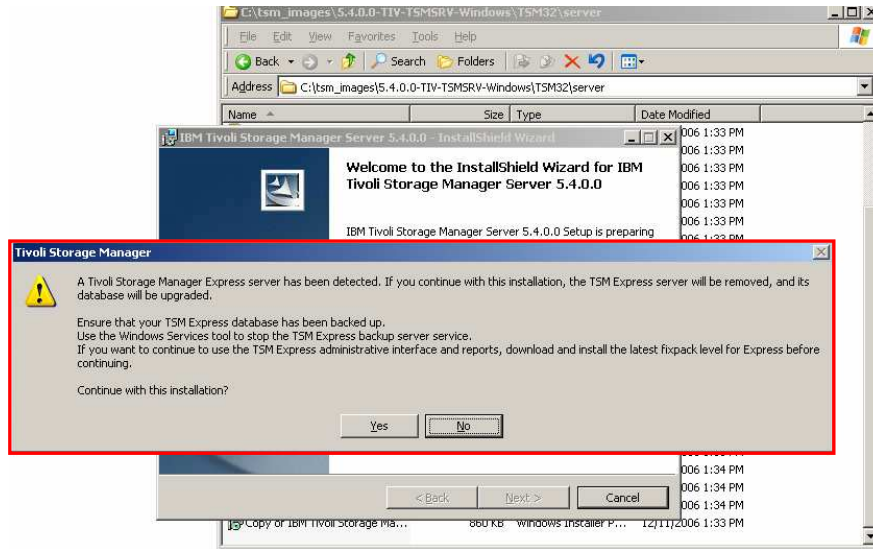
Microsoft® SQL and Exchange

- Microsoft SQL and Exchange data protection clients* are available for Tivoli Storage Manager Express (they are the standard Data Protection clients in a new installation wrapper).
- These Express data protection clients will continue to work (backup and restore) with the upgraded Tivoli Storage Manager server. Data previously backed from these clients can still be restored.
- A new parameter has been added to the GENERATE BACKUPSET command for Tivoli Storage Manager Express 5.4: DATAType = APPL. This data type is only valid when used with a Tivoli Storage Manager server that has been upgraded from Express (and only for SQL and Exchange). For new (non-upgraded) Tivoli Storage Manager enterprise installations, application data still cannot be stored in backup sets.

*IBM Tivoli Storage Manager for Databases: Microsoft SQL

IBM Tivoli Storage Manager for Mail: Microsoft Express

Upgrade warning



What you need to know after upgrading

Aside from the specifics outlined in this presentation, upgrading from Tivoli Storage Manager Express to Tivoli Storage Manager enterprise is the same as upgrading from one version of the enterprise server to another. You should be able to use standard processes to diagnose and troubleshoot any installation errors.

What you need to know after upgrading (cont.)

- You can continue to create media copies and implement the GFS model (backup set rotation) using the Express administrative interface. But if you stop using the Express administrative interface, managing media copies gets complicated. It is a good idea to implement a storage pool hierarchy or back up your data directly to tape instead of relying on backup sets as the primary mechanism of transferring data to tape.
- Scripts in Express (for example, automatic database backup) can conflict or be redundant with scripts in the enterprise maintenance plan. The best practice is to delete Express scripts if you create a maintenance plan in enterprise.

What you need to know after upgrading (cont.)

- You will not receive packing lists or hourly reports if you use operational reporting. However, the information used by Express to create packing lists is available by issuing the QUERY BACKUPSET F=D command.
- Starting with the 5.3.4 fixpack of the enterprise server, the installation process will check for the existence of the Express server and fail with a message if it is found. If you install Tivoli Storage Manager 5.3.2 in the same directory as Express, the Express installation will be overwritten. In this case, the 5.3.2 server will not start because the database version will be at a higher level than the server. To recover, you will need to uninstall the enterprise server and reinstall Express.

What you need to know after upgrading (cont.)

Tivoli Storage Manager Express does not create the standard default administrator ID and password (admin and admin). The Windows® Microsoft Management Console plug-in that is available with the enterprise server makes use of this default ID.

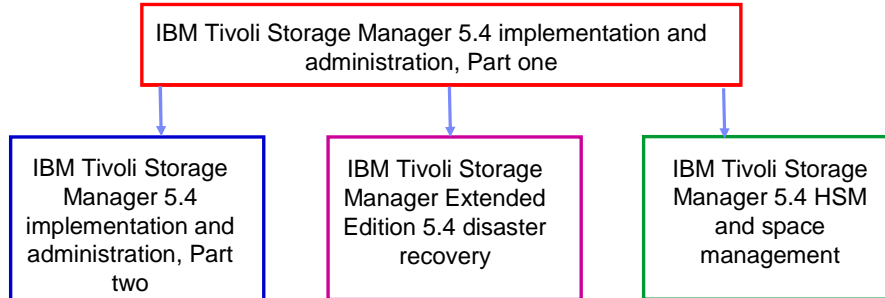
After upgrading, this management console will not be able to communicate with the Tivoli Storage Manager server. To update the ID and password, open the management console and right-click the server name. Then select Properties and click Account.

Summary

You should now be able to:

- Explain the benefits of upgrading
- Perform the upgrade process
- Define what you need to know after upgrading

IBM Tivoli Storage Manager 5.4 curriculum roadmap for implementers and administrators



http://www.ibm.com/software/tivoli/education/edu_prd.html

Feedback

Your feedback is valuable

You can help improve the quality of IBM Education Assistant content to better meet your needs by providing feedback.

- Did you find this module useful?
- Did it help you solve a problem or answer a question?
- Do you have suggestions for improvements?

Click to send e-mail feedback:

mailto:iea@us.ibm.com?subject= Feedback about TSM54_tsmx_upgrade.ppt

You can help improve the quality of IBM Education Assistant content by providing feedback.

Trademarks, copyrights, and disclaimers

The following terms are trademarks or registered trademarks of International Business Machines Corporation in the United States, other countries, or both:

IBM Tivoli WebSphere

Microsoft, Windows, Windows Server, and the Windows logo are registered trademarks of Microsoft Corporation in the United States, other countries, or both.

Product data has been reviewed for accuracy as of the date of initial publication. Product data is subject to change without notice. This document could include technical inaccuracies or typographical errors. IBM may make improvements or changes in the products or programs described herein at any time without notice. Any statements regarding IBM's future direction and intent are subject to change or withdrawal without notice, and represent goals and objectives only. References in this document to IBM products, programs, or services does not imply that IBM intends to make such products, programs or services available in all countries in which IBM operates or does business. Any reference to an IBM Program Product in this document is not intended to state or imply that only that program product may be used. Any functionally equivalent program, that does not infringe IBM's intellectual property rights, may be used instead.

Information is provided "AS IS" without warranty of any kind. THE INFORMATION PROVIDED IN THIS DOCUMENT IS DISTRIBUTED "AS IS" WITHOUT ANY WARRANTY, EITHER EXPRESS OR IMPLIED. IBM EXPRESSLY DISCLAIMS ANY WARRANTIES OF MERCHANTABILITY, FITNESS FOR A PARTICULAR PURPOSE OR NON-INFRINGEMENT. IBM shall have no responsibility to update this information. IBM products are warranted, if at all, according to the terms and conditions of the agreements (for example, IBM Customer Agreement, Statement of Limited Warranty, International Program License Agreement, etc.) under which they are provided. Information concerning non-IBM products was obtained from the suppliers of those products, their published announcements or other publicly available sources. IBM has not tested those products in connection with this publication and cannot confirm the accuracy of performance, compatibility or any other claims related to non-IBM products.

IBM makes no representations or warranties, express or implied, regarding non-IBM products and services.

The provision of the information contained herein is not intended to, and does not, grant any right or license under any IBM patents or copyrights. Inquiries regarding patent or copyright licenses should be made, in writing, to:

IBM Director of Licensing
IBM Corporation
North Castle Drive
Armonk, NY 10504-1785
U.S.A.

Performance is based on measurements and projections using standard IBM benchmarks in a controlled environment. All customer examples described are presented as illustrations of how those customers have used IBM products and the results they may have achieved. The actual throughput or performance that any user will experience will vary depending upon considerations such as the amount of multiprogramming in the user's job stream, the I/O configuration, the storage configuration, and the workload processed. Therefore, no assurance can be given that an individual user will achieve throughput or performance improvements equivalent to the ratios stated here.

© Copyright International Business Machines Corporation 2007. All rights reserved.

Note to U.S. Government Users - Documentation related to restricted rights-Use, duplication or disclosure is subject to restrictions set forth in GSA ADP Schedule Contract and IBM Corp.

