



IBM Tivoli Support Technical Exchange Web Seminar

Tivoli Storage Manager

Windows open file support



© 2007 IBM Corporation
Updated November 1, 2007

Outline

- What is open file support
- Supported platforms
- Installation
- Configuration settings
- Version 5.2 versus 5.3 and 5.
- Performance tuning
- Known issues
- References



Terminology

- **Serialization**
 - ▶ A copy group attribute that specifies whether a file can be modified during a backup or archive operation.
- **Snapshot**
 - ▶ A snapshot is a point-in-time view of a volume
- **LVSA**
 - ▶ TSM Logical Volume Snapshot Agent
- **GUI**
 - ▶ TSM Client graphical user interface

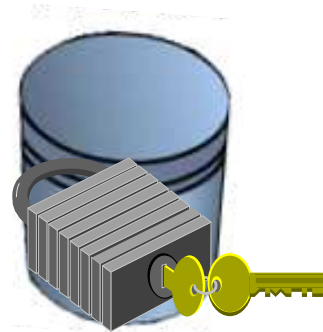
What is open file support ?

- Backup of files that are opened in such a way to deny access to all other processes on a Microsoft® Windows® operating system
- TSM uses the LVSA driver to accomplish this



Why use open file support ?

- Files being backed up are made unavailable to all other applications resulting in:
 - ANS4987E Error processing
'\\machine1\x\$\dir\lockedfile.xyz': the object is in use by another process
 - ANS1228E Sending of object
'\\machine1\x\$\dir\lockedfile.xyz' failed
- Provides a clean backup of open files as opposed to using the 'dynamic' copy serialization setting



Supported platforms

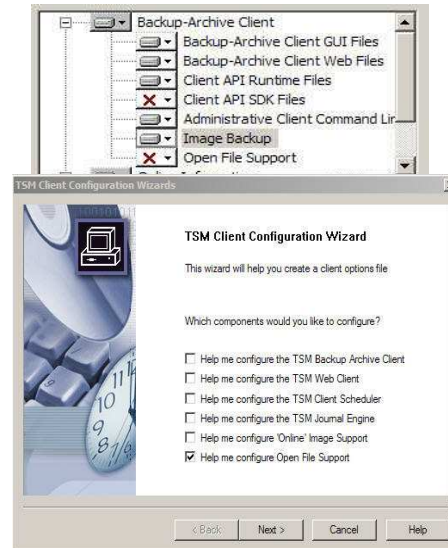
- Windows 2000
 - ▶ TSM Client and 5.3
- Windows XP Professional
 - ▶ TSM Client 5.3, 5.4
- Windows 2003
 - ▶ TSM Client 5.3.2 or hig

Microsoft®



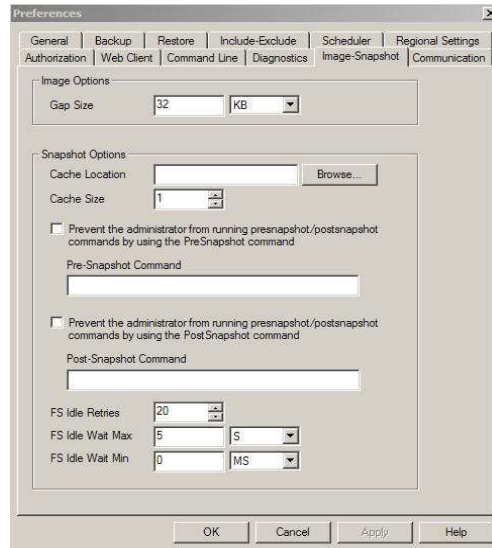
Installing the LVSA

- Initial Setup
 - ▶ Select the 'Image Backup' package during the initial installation of the client
- Client GUI Setup Wizard
 - ▶ Utilities -> Setup Wizard
- Initial Configuration
 - ▶ Default settings will be used after installation
 - ▶ No configuration is required



Configuration options

- **Dsm.opt**
 - ▶ Include.fs fileleveltype
 - ▶ Snapshotcachelocation
 - ▶ Snapshotcachesize
 - ▶ Snapshotroot
 - ▶ Presnapshotcmd
 - ▶ Postsnapshotcmd
- **GUI preferences**



Options

- **Include.fs d: fileleveltype=snapshot**
 - ▶ Enables OFS for the file system (D: in this example)
 - ▶ Default for all file systems if option is not defined
- **Include.fs c: fileleveltype=dynamic**
 - ▶ Disables OFS of the file system (C: in this example)
- **Snapshotcachelocation c:\lvsacache**
 - ▶ Location where changes to the file system are stored during an OFS backup (c:\lvsacache in this example)
- **Snapshotcachesize 10**
 - ▶ Specifies the max size of the cache file
 - ▶ Value is a percent of the size of the file system where cache file resides (10% of the snapshotcachelocation in this example)
 - ▶ Default value is 1

Options (continued)

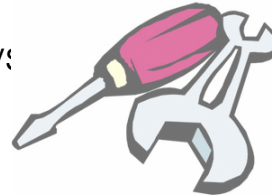
- Snapshotroot
 - ▶ Used with incremental, selective or archive commands
 - ▶ Used with applications from other vendors that provide snapshots
 - ▶ Associates the data on the local snapshot with the real file space data that is stored on the TSM server
- Presnapshotcmd “cmdstring”
 - ▶ Allows OS shell commands to be run before LVSA starts a snapshot
- Postsnapshotcmd “cmdstring”
 - ▶ Allows OS shell commands to be run after the LVSA starts a snapshot

OFS differences between 5.2 and 5.3

- TSM Client 5.2
 - ▶ No Windows 2003 support
 - ▶ Requires at least 2 local file systems to be present
 - ▶ Snapshotcachelocation for a file system can not be resident (that is, the cache for a file system having a snapshot taken must be located on another file system)
- TSM Client 5.3 and 5.4
 - ▶ Snapshotcachelocation should be resident (that is, the cache for a file system having a snapshot taken should be located on the same file system)
 - ▶ Windows 2003 is supported at 5.3.2 and higher

Performance tuning

- Changes to defaults in 5.3.3-5.4.1
 - ▶ OFS may or may not fail after upgrading to 5.3.3. Defaults changed back in version 5.4.1 (APAR IC51758)
- Snapshotssidewait **max_wait, min_wait**
 - ▶ Specifies how long a file system needs to be idle before a snapshot will be taken
 - ▶ Example: Snapshotssidewait 5s,1s
First attempt would wait for 5 seconds, next attempts would increment down based on min_wait and retry_number
 - ▶ A value of zero will not wait for the file system to be idle but is not recommended
- Snapshotssideretries **retry_number**
 - ▶ Specifies the number of times that the LV's snapshot
- ▶ Refer to the client manual or DCF 1121552 for further information on adjusting these settings



Known issues

■ DCFs

- ▶ 1169583 - TSM Client Cannot Backup Windows 2000 Encrypted Files Systems (EFS) When TSM's Open File Support Is Enabled
- ▶ 1234276 - TSM client open file support backup fails with ANS1378E error
- ▶ 1155400 - TSM error "ANS1327E The snapshot operation for 'C:' failed. Error code: 653"
- ▶ 1176642 - TSM backup and restore of NTUSER.DAT in a Windows 2003 environment

■ APARs

- ▶ IC48961 - ANS1425E - IMAGE BACKUP OF COMPRESSED DISK FAILS IF CACHE LOCATION IS ON THE SAME DRIVE
- ▶ IC47649 - BACKUPS HANG WHEN INVALID SNAPSHOTCACHELOCATION SPECIFIED.
- ▶ IC49029 - WINDOWS SYSTEM HANG DURING OFS BACKUP

- OFS is not supported for backing up active VMWare Images



Resources:

- IBM Tivoli Storage Manager Concepts
<http://www.redbooks.ibm.com/redbooks/pdfs/sq244877.pdf>
- IBM Tivoli Storage Manager Backup-Archive Clients Installation and User's Guide
<http://publib.boulder.ibm.com/infocenter/tivihelp/v1r1/index.jsp?toc=/com.ibm.itstorage.doc/toc.xml>
- DCF Document ID: 1121552 - TSM Client V5.2 Open File Support
<http://www-1.ibm.com/support/>
- DCF Document ID: 1189577 - TSM LVSA (Logical Volume Snapshot Agent) additional considerations.
<http://www-1.ibm.com/support/>

Trademarks, copyrights, and disclaimers

The following terms are trademarks or registered trademarks of International Business Machines Corporation in the United States, other countries, or both:

IBM Tivoli

Microsoft, Windows, and the Windows logo are registered trademarks of Microsoft Corporation in the United States, other countries, or both.

Product data has been reviewed for accuracy as of the date of initial publication. Product data is subject to change without notice. This document could include technical inaccuracies or typographical errors. IBM may make improvements or changes in the products or programs described herein at any time without notice. Any statements regarding IBM's future direction and intent are subject to change or withdrawal without notice, and represent goals and objectives only. References in this document to IBM products, programs, or services does not imply that IBM intends to make such products, programs or services available in all countries in which IBM operates or does business. Any reference to an IBM Program Product in this document is not intended to state or imply that only that program product may be used. Any functionally equivalent program, that does not infringe IBM's intellectual property rights, may be used instead.

Information is provided "AS IS" without warranty of any kind. THE INFORMATION PROVIDED IN THIS DOCUMENT IS DISTRIBUTED "AS IS" WITHOUT ANY WARRANTY, EITHER EXPRESS OR IMPLIED. IBM EXPRESSLY DISCLAIMS ANY WARRANTIES OF MERCHANTABILITY, FITNESS FOR A PARTICULAR PURPOSE OR NON-INFRINGEMENT. IBM shall have no responsibility to update this information. IBM products are warranted, if at all, according to the terms and conditions of the agreements (for example, IBM Customer Agreement, Statement of Limited Warranty, International Program License Agreement, etc.) under which they are provided. Information concerning non-IBM products was obtained from the suppliers of those products, their published announcements or other publicly available sources. IBM has not tested those products in connection with this publication and cannot confirm the accuracy of performance, compatibility or any other claims related to non-IBM products.

IBM makes no representations or warranties, express or implied, regarding non-IBM products and services.

The provision of the information contained herein is not intended to, and does not, grant any right or license under any IBM patents or copyrights. Inquiries regarding patent or copyright licenses should be made, in writing, to:

IBM Director of Licensing
IBM Corporation
North Castle Drive
Armonk, NY 10504-1785
U.S.A.

Performance is based on measurements and projections using standard IBM benchmarks in a controlled environment. All customer examples described are presented as illustrations of how those customers have used IBM products and the results they may have achieved. The actual throughput or performance that any user will experience will vary depending upon considerations such as the amount of multiprogramming in the user's job stream, the I/O configuration, the storage configuration, and the workload processed. Therefore, no assurance can be given that an individual user will achieve throughput or performance improvements equivalent to the ratios stated here.

© Copyright International Business Machines Corporation 2007. All rights reserved.

Note to U.S. Government Users - Documentation related to restricted rights-Use, duplication or disclosure is subject to restrictions set forth in GSA ADP Schedule Contract and IBM Corp.

