



IBM Software Group

# IBM WebSphere® Application Server V6

## *System Management*

## *Administrative Console*



@business on demand.

© 2004, 2006 IBM Corporation  
Updated April 24, 2006

This presentation will look at just one of the administrative clients that WebSphere supports – the browser based Administrative Console.

## Goals

- Describe the following:
  - ▶ WebSphere Application Server V6 Administrative Console
  
- Pre-requisites:
  - ▶ Basic understanding of WebSphere Application Server V6 System Management Architecture



The goal of this presentation is to describe at a high level the administrative console, and the changes from version Five.

## Administrative Console review

- V4: AE Administrative console was a thick Java™ Client
  - ▶ Browser based Administrative Console was introduced in the V4 AEs (AE single server)
- V5: Browser based Administrative Console
- V6: Browser based Administrative Console has new look with many usability enhancements
- Administrative console is a standard J2EE application

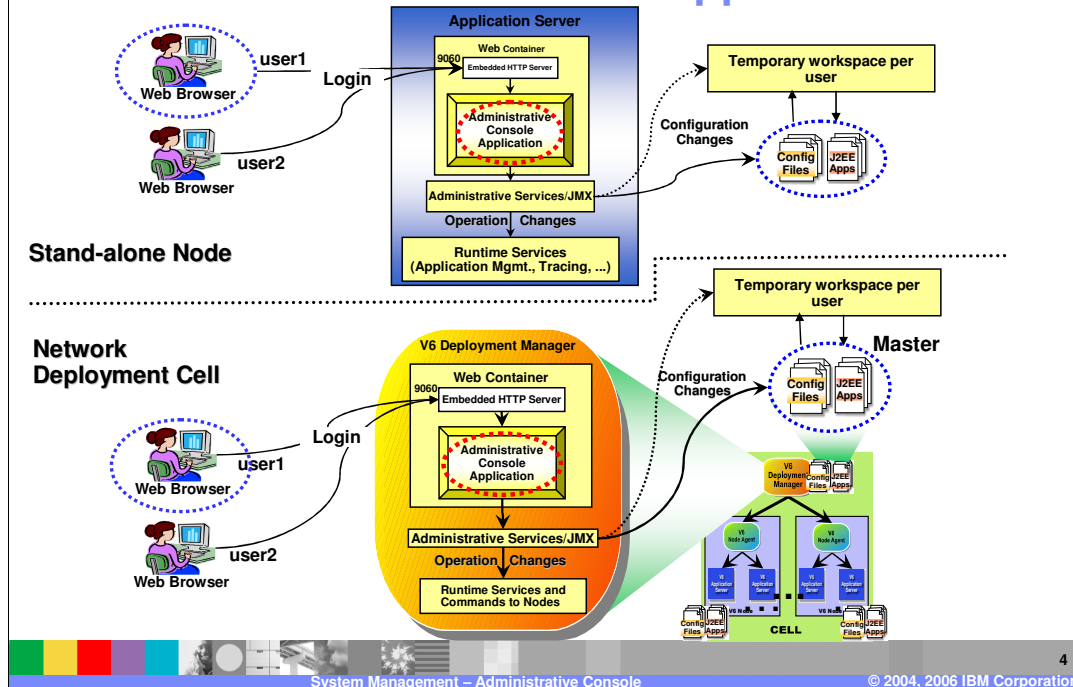


In the WebSphere Version 4.0 Single Server Edition, a browser based administrative console was introduced. It allowed administration of the server through a browser interface interacting with a Web application running in the server. This allowed the server to be administered from anywhere it could be reached over HTTP protocol without having to install a client side administrative application. In WebSphere Version 5, this approach was expanded to allow administration of an entire cell through a browser based console.

The Administrative Console application which runs in a WebSphere Version 6 server is a standard J2EE 1.4 Web Application, using servlets and JSPs. The Administrative Console application can almost be thought of as a fancy XML editor, because it's main purpose is to update XML configuration files.

Among the new features in version six is the ability to administer the IBM HTTP server through the Administrative Console, and the integration of the Tivoli® Performance Viewer.

## Administrative Console J2EE application



For the distributed platforms, the Administrative Console gets installed during installation of the base application server environment and also during the network deployment environment installation. There are slight differences in the versions of the Administrative Console application for these two environments. On z/OS®, the addition of the Administrative Console application to a server is accomplished during the configuration process. It is the same application that is used on the distributed platforms.

On the top of this slide is the **Stand-alone Node**: The Administrative Console application runs within the application server along with your other enterprise applications. It reads and updates the XML configuration files and the application EAR files on the file system, and processes commands which are used to modify the server runtime. You can connect to the Administrative Console application using a web browser from any location that the server is accessible in an intranet or through the internet. The connection can be unsecured or secured using SSL. The default unsecured port is 9090 for V5 and 9060 for V6 and the default SSL port is 9043, but these are both configurable.

The bottom picture is the **Network Deployment Cell**: The Administrative Console application runs in the deployment manager. It works in the same way that it does in the base application server environment, except that it provides a view of the entire network deployment cell. During federation of a stand-alone node, the addNode process removes the Administrative Console application from the server of the node being added.

## New features

- Console views change based on context
  - Version (V5 and V6 Nodes), Platform, Installed Capabilities
  - Only show operations that are available for the particular server/node
- IBM HTTP Server management and Tivoli Performance Viewer are integrated in the Administrative Console
- Many usability enhancements
  - ▶ Most subtasks panels now appear in view without scrolling or required reduced scrolling
  - ▶ Graphical view of the cell topology



The Administrative Console has been redesigned to conform to a common look for IBM consoles.

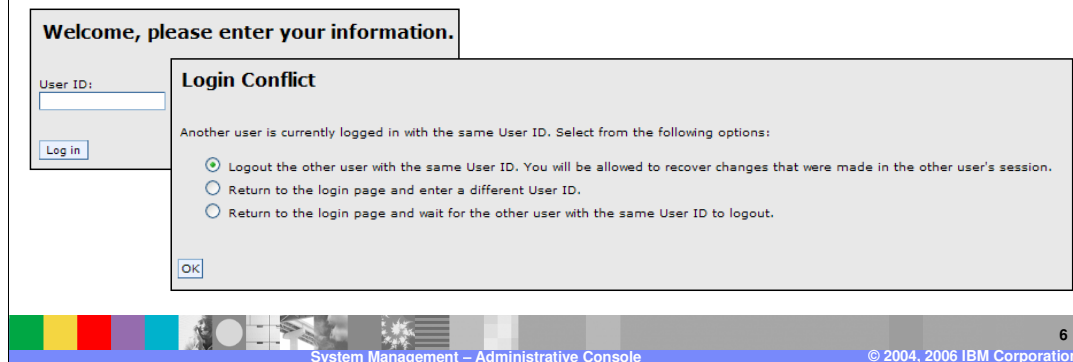
The ability to configure and manage multiple versions of the product, multiple platforms within the same cell, and extensions appearing per node from a single console is one of the key console enhancements for 6.0. The Console adapts to multiple product versions and platforms, so only the tasks that are available in the configuration will be visible in the Administrative Console.

You can now administer the IBM HTTP Server and the Tivoli Performance Viewer from within the Administrative Console.

The new design of the Administrative Console makes better use of the available space—so there is less scrolling through pages to locate the feature you need.

## Logging in to the Administrative Console

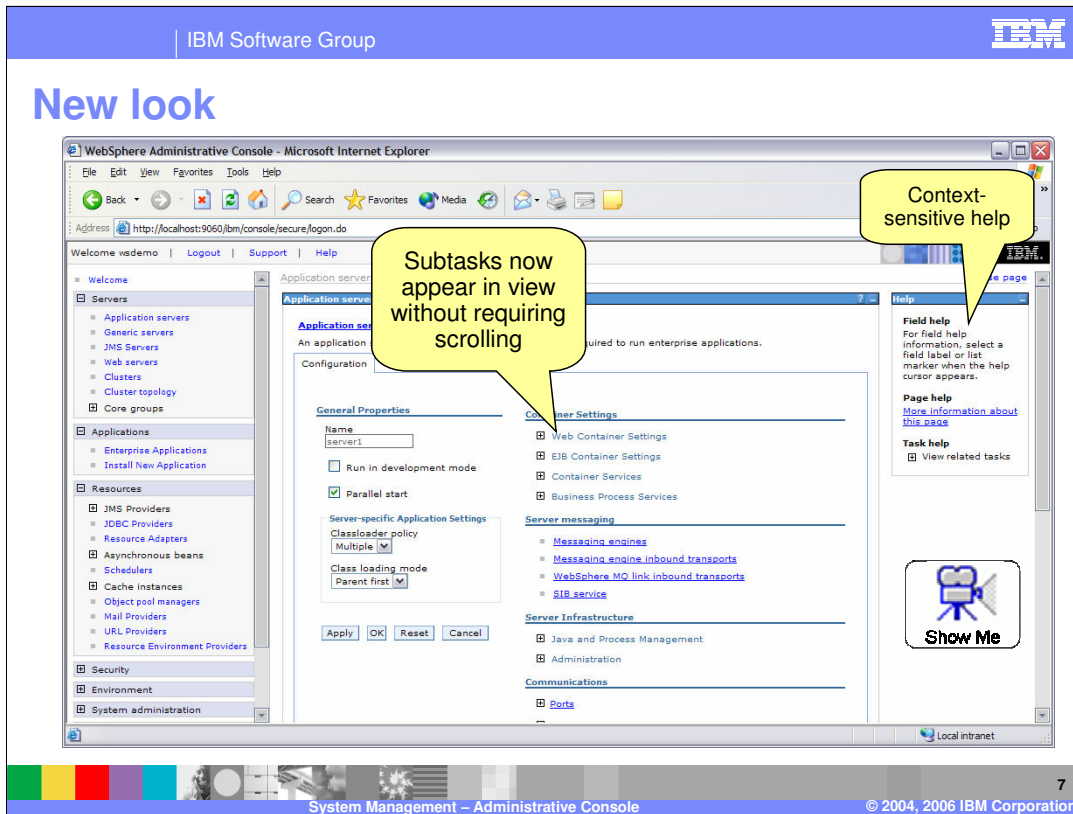
- Web browser access: "http://<hostname>:9060/ibm/console" (9043 for SSL)
  - ▶ Connects to a server running the Administrative Console application
  - ▶ Password required only if Global Security is enabled
- Username is used to track and save user-specific configuration data
  - ▶ Allows recovery from unsaved previous session changes
  - ▶ User workspace located in the profile "wstemp" directory:  
 <%WAS\_INSTALL%>/profiles/<profileName>/wstemp/<generated-hashed-name>/workspace



The Administrative Console URL port Number was changed from 9090 to 9060 in order to avoid conflict with the webSM application on AIX® platform.

Since the Administrative Console is browser based, the Administrative Console application must be running in a server in order to use it. Therefore, the server cannot be started through the Administrative Console but must be done using command line utilities, as shown in the slide. You then use the appropriate URL in your Web Browser to connect to the Administrative Console application. These URLs are also shown in the slide.

The dialog box on the left shows the prompting for the user ID. If global security is enabled, you will be prompted for a user ID and password which must be valid when authenticated using the configured authentication mechanism. If security is not enabled, you will be prompted for only the user ID, but this user ID can be any string value. The value that you use for your user ID is important however, because it is used to associate the updates you are making with temporary files until you save of those files into the configuration repository. The dialog box on the right is one you will commonly see when logging into the Administrative Console. It tells you that there is already a user logged on with the same id you are attempting to log on with. In most cases, this is caused because a previous session was ended without saving and logging out. This dialog gives you a chance to recover those changes.



Most subtasks now appear in view without requiring scrolling. For a demonstration of Administrative Console function, click the Show Me icon.

## Summary

- Administrative Console is a J2EE application
- Improved appearance
- Can manage V5 and V6 nodes
  - ▶ Displays only the functions available on each
- Functionality can be controlled on per-user basis



In summary, the Administrative Console is a J2EE Application with a new look but a familiar layout. It can administer both version five and version six nodes within a mixed cell, displaying only the relevant content. Finally, work in progress is not lost if you lose a connection to the console, because the workspace stores pending changes on the server.



## Trademarks, copyrights, and disclaimers

The following terms are trademarks or registered trademarks of International Business Machines Corporation in the United States, other countries, or both:

IBM	CICS	IMS	MQSeries	Tivoli
IBM (logo)	Cloudscape	Informix	OS/390	WebSphere
eIogo business	DB2	Series	OS/400	xSeries
AIX	DB2 Universal Database	Lotus	pSeries	zSeries

Java and all Java-based trademarks are trademarks of Sun Microsystems, Inc. in the United States, other countries, or both.

Microsoft, Windows, Windows NT, and the Windows logo are registered trademarks of Microsoft Corporation in the United States, other countries, or both.

Intel, ActionMedia, LANDesk, MMX, Pentium and ProShare are trademarks of Intel Corporation in the United States, other countries, or both.

UNIX is a registered trademark of The Open Group in the United States and other countries.

Linux is a registered trademark of Linus Torvalds.

Other company, product and service names may be trademarks or service marks of others.

Product data has been reviewed for accuracy as of the date of initial publication. Product data is subject to change without notice. This document could include technical inaccuracies or typographical errors. IBM may make improvements and/or changes in the product(s) and/or program(s) described herein at any time without notice. Any statements regarding IBM's future direction and intent are subject to change or withdrawal without notice, and represent goals and objectives only. References in this document to IBM products, programs, or services does not imply that IBM intends to make such products, programs or services available in all countries in which IBM operates or does business. Any reference to an IBM Program Product in this document is not intended to state or imply that only that program product may be used. Any functionally equivalent program, that does not infringe IBM's intellectual property rights, may be used instead.

Information is provided "AS IS" without warranty of any kind. THE INFORMATION PROVIDED IN THIS DOCUMENT IS DISTRIBUTED "AS IS" WITHOUT ANY WARRANTY, EITHER EXPRESS OR IMPLIED. IBM EXPRESSLY DISCLAIMS ANY WARRANTIES OF MERCHANTABILITY, FITNESS FOR A PARTICULAR PURPOSE OR NONINFRINGEMENT. IBM shall have no responsibility to update this information. IBM products are warranted, if at all, according to the terms and conditions of the agreements (e.g., IBM Customer Agreement, Statement of Limited Warranty, International Program License Agreement, etc.) under which they are provided. Information concerning non-IBM products was obtained from the suppliers of those products, their published announcements or other publicly available sources. IBM has not tested those products in connection with this publication and cannot confirm the accuracy of performance, compatibility or any other claims related to non-IBM products. IBM makes no representations or warranties, express or implied, regarding non-IBM products and services.

The provision of the information contained herein is not intended to, and does not, grant any right or license under any IBM patents or copyrights. Inquiries regarding patent or copyright licenses should be made, in writing, to:

IBM Director of Licensing  
IBM Corporation  
North Castle Drive  
Armonk, NY 10504-1785  
U.S.A.

Performance is based on measurements and projections using standard IBM benchmarks in a controlled environment. All customer examples described are presented as illustrations of how those customers have used IBM products and the results they may have achieved. The actual throughput or performance that any user will experience will vary depending upon considerations such as the amount of multiprogramming in the user's job stream, the I/O configuration, the storage configuration, and the workload processed. Therefore, no assurance can be given that an individual user will achieve throughput or performance improvements equivalent to the ratios stated here.

© Copyright International Business Machines Corporation 2004, 2006. All rights reserved.

Note to U.S. Government Users - Documentation related to restricted rights-Use, duplication or disclosure is subject to restrictions set forth in GSA ADP Schedule Contract and IBM Corp.