



IBM Software Group

IBM Tivoli® Composite Application Manager

For IBM WebSphere® Application Server V7

Installation



@business on demand.

© 2008 IBM Corporation
Updated September 22, 2008

This presentation discusses the Tivoli embedded composite application manager as found in IBM WebSphere Application Server V7.

Goals

- Overview of Tivoli Composite Application Manager for IBM WebSphere Application Server V7
 - ▶ No prior knowledge is assumed
 - ▶ Reference for more details of the Tivoli Composite Application Manager family
- Installation and configuration instructions



This presentation presents an introduction to the Tivoli Composite Application Manager for WebSphere V7 and how it relates to IBM Tivoli's composite application manager family. You will also see how to install the composite application manager for WebSphere.

Agenda

- Overview
- Installation and configuration
- Problem determination
- Summary and references



An overview of the Tivoli composite application manager for WebSphere V7 is provided, followed with installation, problem determination and a summary.

Section

Overview



This section presents a high level view of Tivoli's embedded composite application manager.

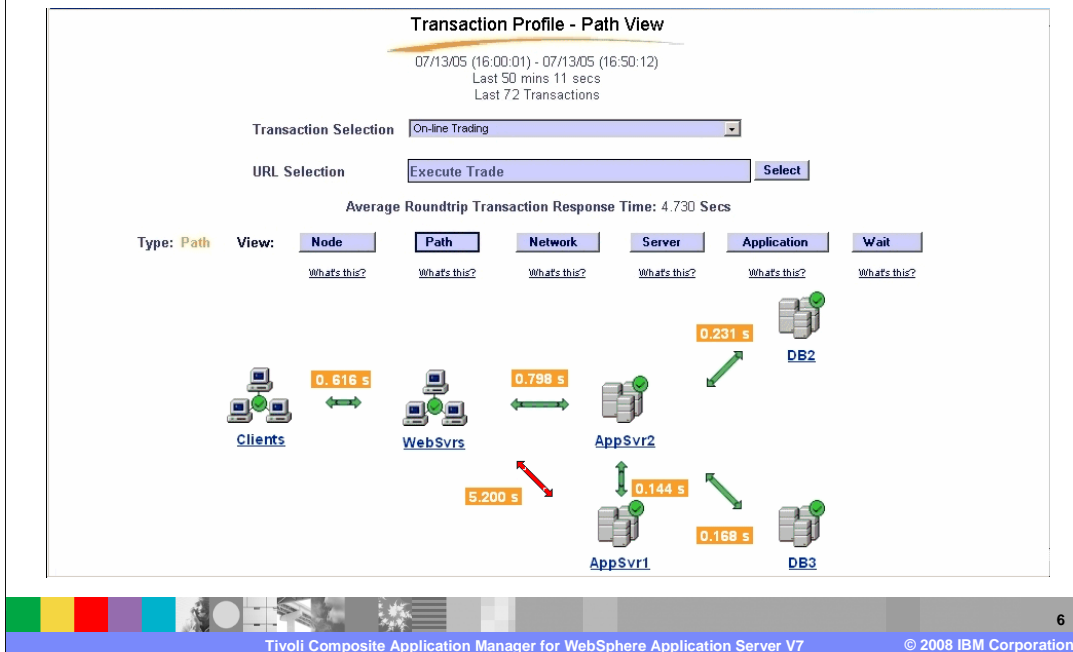
IBM Tivoli Composite Application Manager family

- ITCAM – global monitoring
 - ▶ ITCAM Family
 - WebSphere, CICS®, Message Broker and others
 - ▶ Provides a central display
 - Data collectors in each monitored target
 - Selectable levels of monitoring
 - ▶ Automatic diagnose of problem areas
 - Reports
 - Can dive into components of targets



In the typical IT organization, operators and administrators spend the day moving from one console to another. Logging onto one agent after another, trying to track down the information they need to ensure high performance and availability. The IBM Tivoli Composite Application Manager (ITCAM) family combines deep IT management capabilities with the rich functionality of IBM Tivoli Monitoring products, delivering a truly integrated solution for monitoring and management across the entire enterprise. ITCAM provides a common data model enabling a consistent view of information across all components and agents. This information is then consolidated in one easy-to-use role-based interface for monitoring and solving problems that arise.

ITCAM demonstration



To better understand the ITCAM family and how it integrates with other IBM products, follow the link to the Tivoli ITCAM family flash demonstration in the references. In this sample screen capture from the demonstration you can see AppSrv1 is responding slowly. The demonstration continues to show how an investigation can lead to detecting that a recently installed utility has a memory leak in the application under investigation.

ITCAM for WebSphere V7

- Subset of ITCAM family
- Display is WebSphere Performance Viewer
 - ▶ Monitoring and Tuning → Performance Viewer
- New display variables



IBM Tivoli ITCAM for WebSphere V7 is a proper subset of the ITCAM family and is a part of WebSphere. Instead of using the ITCAM viewer, the output from ITCAM for WebSphere V7 can only be viewed with the IBM Tivoli Performance Viewer found in the WebSphere administrative console. The net effect of installing and configuring ITCAM for WebSphere V7 is a set of new variables to view or graph in the Performance Viewer.

Section

Installation and configuration



The next section shows the steps to install and configure ITCAM for WebSphere V7.

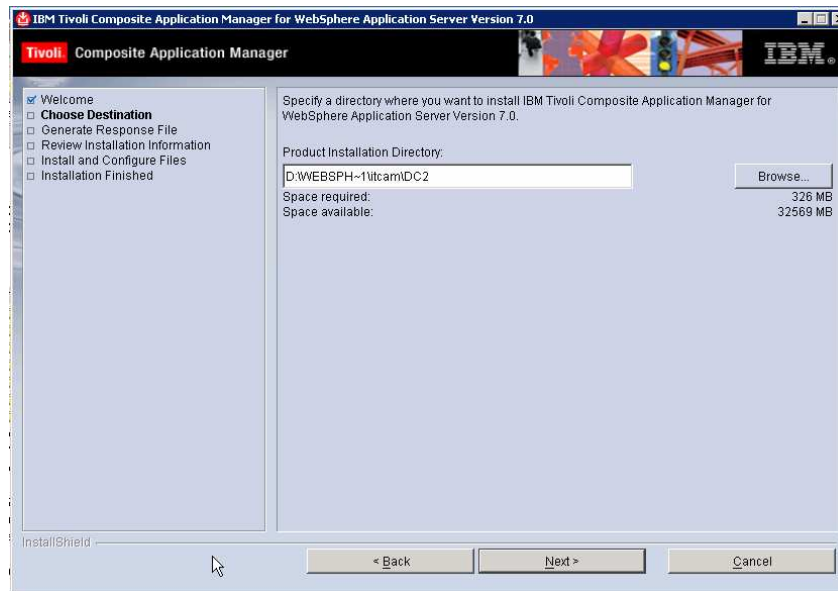
Installing and configuring ITCAM for WebSphere V7

- Installation
 - ▶ From WebSphere V7 launch pad
- Configuration
 - ▶ ...\\ITCAM\\DC\\config_dc\\config_dc.exe(sh)
 - ▶ Restart application servers



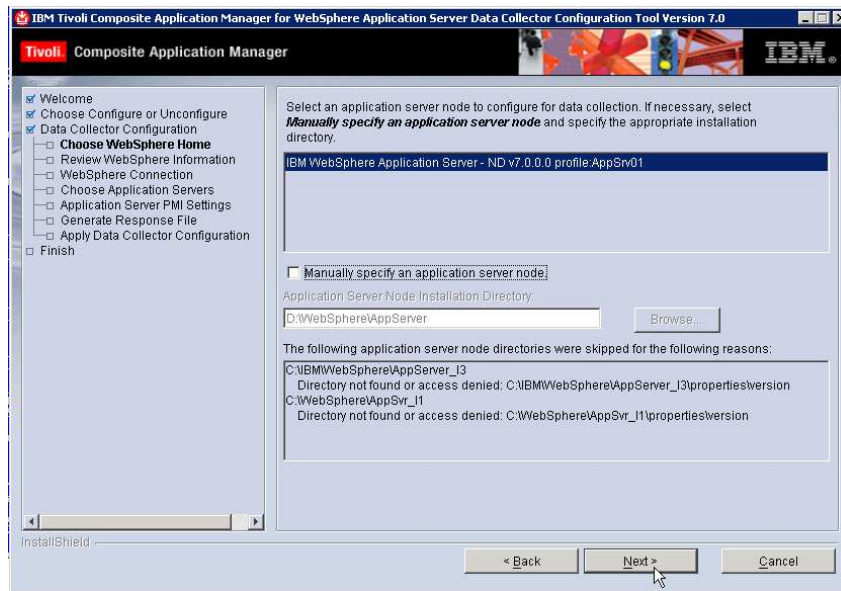
ITCAM for WebSphere V7 is installed from the WebSphere Application Server V7 launch pad and that wizard is shown on the next slide. After installing ITCAM for WebSphere V7 the next step is to configure WebSphere servers. The last step of installation offers a check box to start the configuration process or configuration can be started as shown here. These servers or server can be in a network deployment or stand-alone configuration. This process is shown in following slides. After configuring a server it is important to restart the newly configured servers.

Installation



The installation process shown here is very straight forward.

Configuration: select WebSphere instance



The configuration process is shown on these next few slides. After selecting to either configure or un-configure, you must specify which instance of WebSphere to operate on. The system will detect which instances are present or you can specify a WebSphere that is not detected as the case can be.

Configuration: Deployment manager information

IBM Tivoli Composite Application Manager for WebSphere Application Server Data Collector Configuration Tool Version 7.0

Tivoli Composite Application Manager

- Welcome
- Choose Configure or Unconfigure
- Data Collector Configuration
 - Choose WebSphere Home
 - Review WebSphere Information
 - WebSphere Connection**
 - Choose Application Servers
 - Application Server PMI Settings
 - Generate Response File
 - Apply Data Collector Configuration
- Finish

For a standalone application server, specify the appropriate host name (or IP address) and SOAP/IRMI port. You must run the Data Collector Configuration Tool against each application server that will be monitored via IBM Tivoli Composite Application Manager for WebSphere Application Server. In addition, ensure that the target application server is running before using the Configuration Tool.

For a Network Deployment environment, specify the host name (or IP address) and SOAP/IRMI port of the deployment manager. The deployment manager and node agent must be running.

Host Name: AIMCP023.austin.ibm.com

Connector Type: SOAP

SOAP Connector Port: 8879

User Name:

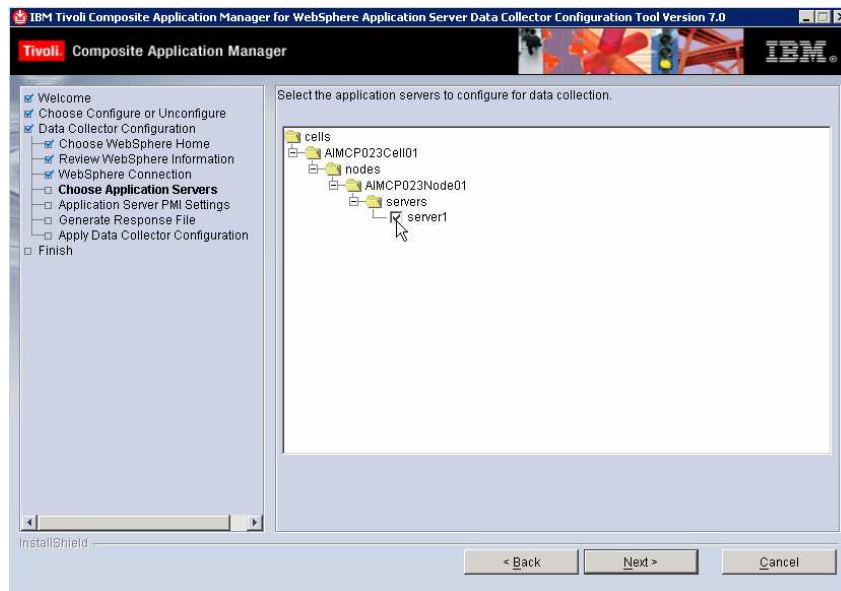
Password:

Please wait while the Data Collector Configuration Tool validates that the WebSphere Application Server's wsadmin utility can run correctly...

< Back Next > Cancel

The next step is to specify how to communicate with selected WebSphere servers. You must use the fully qualified host name here.

Configuration: select application servers



After selecting which servers to configure for ITCAM for WebSphere V7, complete the remaining frames to finish configuring them. Remember to restart all the application servers you just configured.

Section

Problem determination

The next section discusses problem determination

Logs

- By default logs are at
 - ▶ C:\Program Files\ibm\tivoli\common\...
 - ▶ Or /var/ibm/tivoli/common/...
 - ▶ Both log and first failure data capture
- Location can be configured
 - ▶ Properties file
 - <ITCAM base>\DC\runtime\was7000.AIMCP023Node01.server1\dc.java.properties
 - ▶ Properties are
 - jlog.common.dir (for Java output)
 - ibm.common.log.dir (for c/native output)

The debug information is captured into trace and first failure data collection log files. The default root location for all these files is shown here for Windows and UNIX platforms. This location can be changed in the property file as shown here.

Section

Summary and reference

The next section presents a summary and a reference.

Summary

- ITCAM for WebSphere V7 is a proper subset of the ITCAM family
- Separate install and configure from WebSphere
- Provides additional counters for Tivoli Performance Viewer



ITCAM for WebSphere V7 is an enhancement to the Tivoli Performance Viewer found in the administrative console of WebSphere. ITCAM for WebSphere V7 is also a subset of the IBM Tivoli composite application manager which is single focus point for a large IT center. ITCAM for WebSphere V7 is installed separately from WebSphere.

References

- Tivoli ITCAM demonstration:
<http://demos.dfw.ibm.com/brands/tivoli/>



The page at the address shown here contains several demonstrations of the IBM Tivoli Composite Application Manager.

Feedback

Your feedback is valuable

You can help improve the quality of IBM Education Assistant content to better meet your needs by providing feedback.

- Did you find this module useful?
- Did it help you solve a problem or answer a question?
- Do you have suggestions for improvements?

Click to send e-mail feedback:

mailto:iea@us.ibm.com?subject=Feedback_about_WASv7_ITCAM_install.ppt

This module is also available in PDF format at: [../WASv7_ITCAM_install.pdf](#)



You can help improve the quality of IBM Education Assistant content by providing feedback.

Trademarks, copyrights, and disclaimers

The following terms are trademarks or registered trademarks of International Business Machines Corporation in the United States, other countries, or both:

CICS IBM Tivoli WebSphere

A current list of other IBM trademarks is available on the Web at <http://www.ibm.com/legal/copytrade.shtml>

Java, and all Java-based trademarks are trademarks of Sun Microsystems, Inc. in the United States, other countries, or both.

Product data has been reviewed for accuracy as of the date of initial publication. Product data is subject to change without notice. This document could include technical inaccuracies or typographical errors. IBM may make improvements or changes in the products or programs described herein at any time without notice. Any statements regarding IBM's future direction and intent are subject to change or withdrawal without notice, and represent goals and objectives only. References in this document to IBM products, programs, or services does not imply that IBM intends to make such products, programs or services available in all countries in which IBM operates or does business. Any reference to an IBM Program Product in this document is not intended to state or imply that only that program product may be used. Any functionally equivalent program, that does not infringe IBM's intellectual property rights, may be used instead.

Information is provided "AS IS" without warranty of any kind. THE INFORMATION PROVIDED IN THIS DOCUMENT IS DISTRIBUTED "AS IS" WITHOUT ANY WARRANTY, EITHER EXPRESS OR IMPLIED. IBM EXPRESSLY DISCLAIMS ANY WARRANTIES OF MERCHANTABILITY, FITNESS FOR A PARTICULAR PURPOSE OR NON-INFRINGEMENT. IBM shall have no responsibility to update this information. IBM products are warranted, if at all, according to the terms and conditions of the agreements (for example, IBM Customer Agreement, Statement of Limited Warranty, International Program License Agreement, etc.) under which they are provided. Information concerning non-IBM products was obtained from the suppliers of those products, their published announcements or other publicly available sources. IBM has not tested those products in connection with this publication and cannot confirm the accuracy of performance, compatibility or any other claims related to non-IBM products.

IBM makes no representations or warranties, express or implied, regarding non-IBM products and services.

The provision of the information contained herein is not intended to, and does not, grant any right or license under any IBM patents or copyrights. Inquiries regarding patent or copyright licenses should be made, in writing, to:

IBM Director of Licensing
IBM Corporation
North Castle Drive
Armonk, NY 10504-1785
U.S.A.

Performance is based on measurements and projections using standard IBM benchmarks in a controlled environment. All customer examples described are presented as illustrations of how those customers have used IBM products and the results they may have achieved. The actual throughput or performance that any user will experience will vary depending upon considerations such as the amount of multiprogramming in the user's job stream, the I/O configuration, the storage configuration, and the workload processed. Therefore, no assurance can be given that an individual user will achieve throughput or performance improvements equivalent to the ratios stated here.

© Copyright International Business Machines Corporation 2008. All rights reserved.

Note to U.S. Government Users - Documentation related to restricted rights-Use, duplication or disclosure is subject to restrictions set forth in GSA ADP Schedule Contract and IBM Corp.