

IBM WebSphere Application Server V8.5

Installation with the Liberty feature and IBM WebSphere SDK
Java Technology Edition 7.0.1.



© 2012 IBM Corporation

This presentation describes installation characteristics of the Liberty feature included in IBM WebSphere Application Server V8.5 and IBM WebSphere SDK Java Technology Edition 7.0.1.

Distributed platform installation with Liberty feature

- The installation has not changed from the V8.0 release except for the introduction of a new optional feature "WebSphere Application Server Liberty Profile"
- The WebSphere Application Server features are grouped under the feature group "WebSphere Application Server Full Profile"
- The WebSphere Application Server Full Profile or WebSphere Application Server Liberty Profile or both must be installed
- The WebSphere Application Server Full Profile and WebSphere Application Server Liberty Profile feature cannot be modified once they are installed.
- Use feature ID "liberty" to install the new optional feature "WebSphere Application Server Liberty Profile" in silent mode

The installation of the WebSphere Application Server V8.5 has not changed from the previous release except for the introduction of a new optional feature 'WebSphere Application Server Liberty Profile' .

IBM WebSphere Application Server Liberty Profile is a lightweight profile of the application server, along with a simplified configuration approach for the development environment. Its fast restart times, small size and ease of use make it a great option for building web applications that do not require the full JEE environment of traditional enterprise application server profiles. The Liberty profile also can be used in production, and because it is a dynamic configuration, the application server provisions only the features required by the running applications.

The original features of the WebSphere Application Server are grouped under the feature group 'WebSphere Application Server Full Profile'.

During the installation, one of the WebSphere Application Server features must be installed. Once the WebSphere Application Server feature is installed, it cannot be modified. For example, when WebSphere Application Server Full Profile and WebSphere Application Server Liberty Profile feature are installed, they cannot be added or removed until the WebSphere Application Server is uninstalled.



Distributed platform installation of IBM WebSphere SDK Java Technology Edition 7.0.1

- IBM WebSphere SDK Java Technology Edition 7.0.1 is an optional install that can be added into a WebSphere Application Server V8.5 installation
- There are no optional features available
- The architecture (either 32-bit or 64-bit) of IBM WebSphere SDK Java Technology Edition 7.0.1 to be installed will match the architecture of IBM WebSphere SDK Java Technology Edition 6 installed during the installation of WebSphere Application Server V8.5 release
- The architecture of IBM WebSphere SDK Java Technology Edition 7.0.1 cannot be modified

© 2012 IBM Corporation

IBM WebSphere SDK Java Technology Edition 7.0.1 is an optional install that can be added into a WebSphere Application Server V8.5 installation. Note that, like WebSphere Application Server V8, Java 6 is always installed with WebSphere Application Server V8.5 and cannot be removed, even if Java 7 is added.

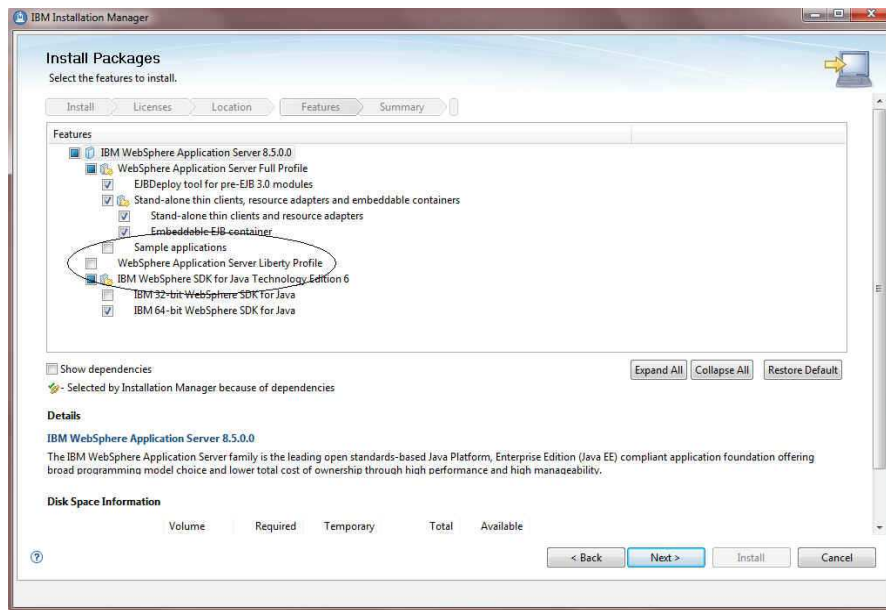
IBM WebSphere SDK Java Technology Edition 7.0.1 has no optional features available for user to select. The architecture of IBM WebSphere SDK Java Technology Edition 7.0.1 to be installed will match the architecture of IBM WebSphere SDK Java Technology Edition 6 installed with WebSphere Application Server V8.5.

It is impossible to modify the architecture of IBM WebSphere SDK Java Technology Edition 7.0.1 after it is installed. This is also true for the IBM WebSphere SDK Java Technology Edition 6 that is installed with WebSphere Application Server V8.5.

Usage scenarios

Here are some usage scenarios.

New optional feature 'WebSphere Application Server Liberty Profile'



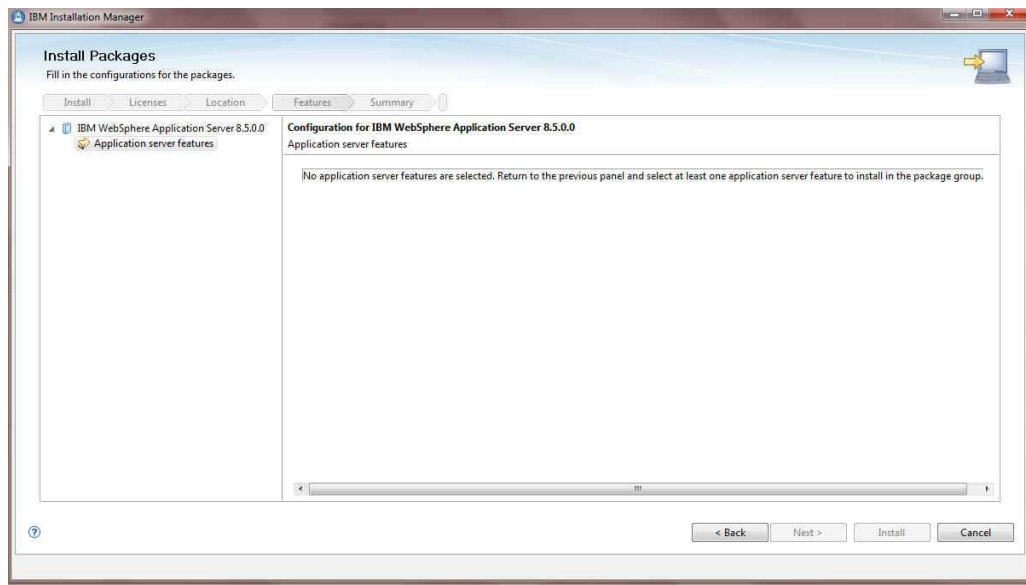
5

© 2012 IBM Corporation

The features of the WebSphere Application Server are grouped under the new feature group 'WebSphere Application Server Full Profile'. The default features are not changed from the previous release.

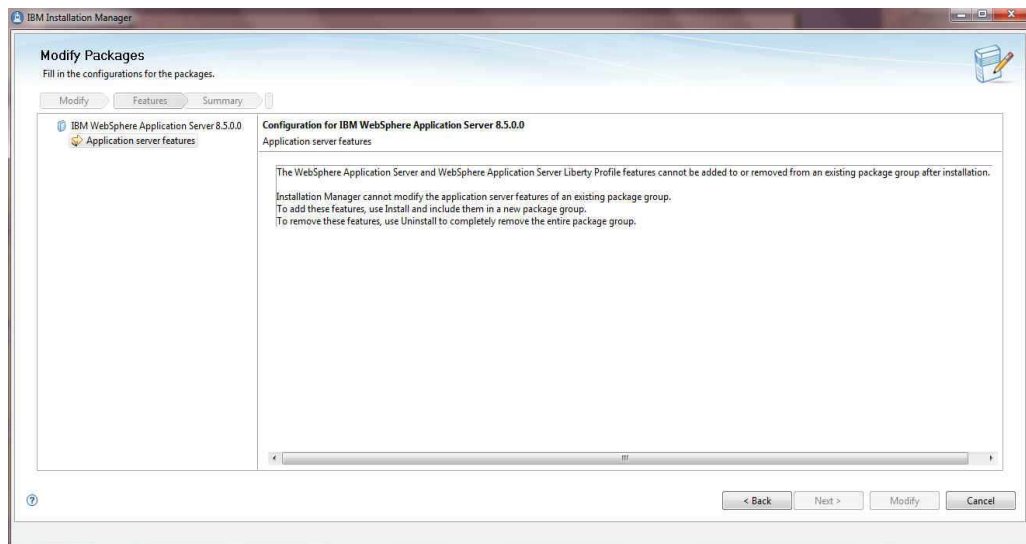
A new optional feature 'WebSphere Application Server Liberty Profile' is added to this release. This new optional feature is not selected by default. In silent mode, use the feature ID 'liberty' to install this new optional feature.

One of the WebSphere Application Server features must be installed



The installation of the WebSphere Application Server is blocked when neither the WebSphere Application Server Full Profile, nor the WebSphere Application Server Liberty Profile features are selected. You must choose one, or both to install.

WebSphere Application Server features cannot be modified



7

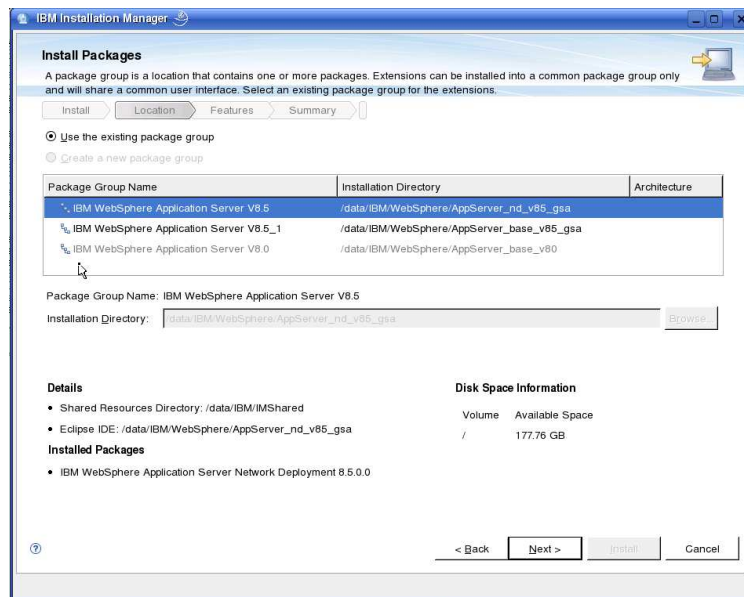
© 2012 IBM Corporation

Once the WebSphere Application Server “Profile” features are installed, they cannot be modified.

For example, when the WebSphere Application Server Full Profile and the WebSphere Application Server Liberty Profile feature are installed, they cannot be added or removed later until the WebSphere Application Server is uninstalled.

However, the features under the WebSphere Application Server Full Profile feature group can be modified without restriction.

IBM WebSphere SDK Java Technology Edition 7.0.1 has to be installed on top of WebSphere Application Server V8.5

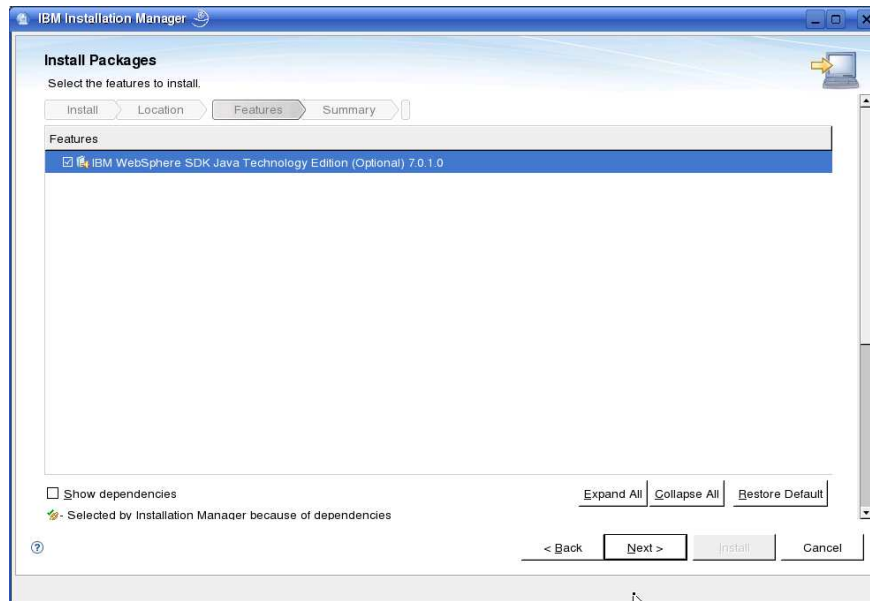


8

© 2012 IBM Corporation

IBM WebSphere SDK Java Technology Edition 7.0.1 must be installed on top of an existing install of WebSphere Application Server V8.5 installation.

There is no optional feature available for IBM WebSphere SDK Java Technology Edition 7.0.1

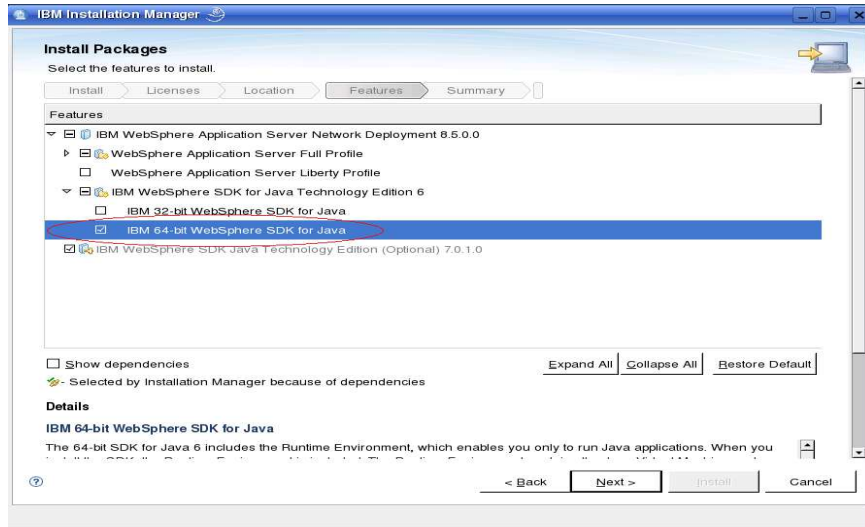


9

© 2012 IBM Corporation

No optional features are available for you to select when installing IBM WebSphere SDK Java Technology Edition 7.0.1.

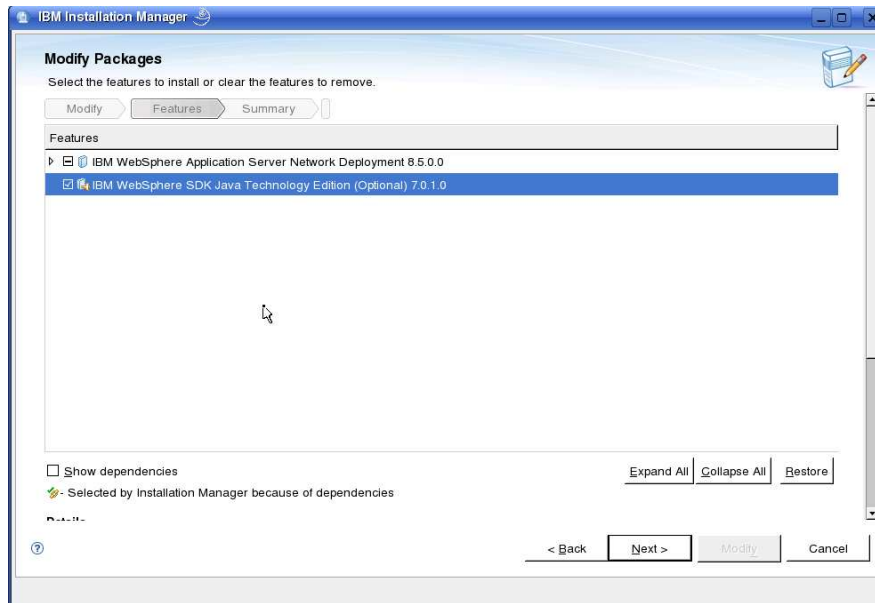
The architecture of IBM WebSphere SDK Java Technology Edition 7.0.1 matches that of IBM WebSphere SDK Java Technology Edition 6



© 2012 IBM Corporation

The architecture selection of IBM WebSphere SDK for Java Technology Edition 6 also applies to IBM WebSphere SDK Java Technology Edition 7.0.1. This is done automatically and there is no action required by users.

Architecture of IBM WebSphere SDK Java Technology Edition 7.0.1.0 cannot be modified



11

© 2012 IBM Corporation

It is not possible to modify the architecture of IBM WebSphere SDK Java Technology Edition 7.0.1 after it is installed. Its architecture will match the architecture of IBM WebSphere SDK Java Technology Edition 6 that was installed when WebSphere Application Server V8.5 release was installed.

Summary

- The installation of the WebSphere Application Server V8.5 has not changed significantly from the previous release
- A new optional feature “WebSphere Application Server Liberty Profile” is added
- The installation of the IBM WebSphere SDK Java Technology Edition 7.0.1 is similar to other optional stack products that are installed on top of WebSphere Application Server V8.5
- The architecture of IBM WebSphere SDK Java Technology Edition 7.0.1 *will match* the architecture of IBM WebSphere SDK Java Technology Edition 6 being written to disk during the installation of WebSphere Application Server V8.5
- The architecture of IBM WebSphere SDK Java Technology Edition 7.0.1 cannot be modified

This slide contains a summary of this presentation.



Feedback

Your feedback is valuable

You can help improve the quality of IBM Education Assistant content to better meet your needs by providing feedback.

- Did you find this module useful?
- Did it help you solve a problem or answer a question?
- Do you have suggestions for improvements?

Click to send email feedback:

[mailto:iea@us.ibm.com?subject=Feedback about WASV85 InstallWAS85JDK7onDISTPlatforms.ppt](mailto:iea@us.ibm.com?subject=Feedback%20about%20WASV85%20InstallWAS85JDK7onDISTPlatforms.ppt)

This module is also available in PDF format at: [../WASV85_InstallWAS85JDK7onDISTPlatforms.pdf](http://WASV85_InstallWAS85JDK7onDISTPlatforms.pdf)

You can help improve the quality of IBM Education Assistant content by providing feedback.



Trademarks, disclaimer, and copyright information

IBM, the IBM logo, ibm.com, and WebSphere are trademarks or registered trademarks of International Business Machines Corp., registered in many jurisdictions worldwide. Other product and service names might be trademarks of IBM or other companies. A current list of other IBM trademarks is available on the web at "[Copyright and trademark information](http://www.ibm.com/legal/copytrade.shtml)" at <http://www.ibm.com/legal/copytrade.shtml>

THE INFORMATION CONTAINED IN THIS PRESENTATION IS PROVIDED FOR INFORMATIONAL PURPOSES ONLY. WHILE EFFORTS WERE MADE TO VERIFY THE COMPLETENESS AND ACCURACY OF THE INFORMATION CONTAINED IN THIS PRESENTATION, IT IS PROVIDED "AS IS" WITHOUT WARRANTY OF ANY KIND, EXPRESS OR IMPLIED. IN ADDITION, THIS INFORMATION IS BASED ON IBM'S CURRENT PRODUCT PLANS AND STRATEGY, WHICH ARE SUBJECT TO CHANGE BY IBM WITHOUT NOTICE. IBM SHALL NOT BE RESPONSIBLE FOR ANY DAMAGES ARISING OUT OF THE USE OF, OR OTHERWISE RELATED TO, THIS PRESENTATION OR ANY OTHER DOCUMENTATION. NOTHING CONTAINED IN THIS PRESENTATION IS INTENDED TO, NOR SHALL HAVE THE EFFECT OF, CREATING ANY WARRANTIES OR REPRESENTATIONS FROM IBM (OR ITS SUPPLIERS OR LICENSORS), OR ALTERING THE TERMS AND CONDITIONS OF ANY AGREEMENT OR LICENSE GOVERNING THE USE OF IBM PRODUCTS OR SOFTWARE.

© Copyright International Business Machines Corporation 2012. All rights reserved.