



IBM Software Group

IBM WebSphere Application Server Feature Pack for Communications Enabled Applications

Maintenance



@business on demand.

© 2009 IBM Corporation
Updated July 31, 2009

This presentation describes how to work with maintenance for the IBM WebSphere® Application Server Feature Pack for Communications Enabled Applications (CEA).

Agenda

- Installing maintenance
- Enforcing fixes



The first section of this presentation describes how to install maintenance for the feature pack, and the second section discusses features in the Installation Manager that enforce fix levels.

Section

Installing maintenance



This section gives an overview of how to work with maintenance in the Feature Pack for CEA environment.

Application server maintenance

- WebSphere Application Server V7 uses the Update Installer to apply maintenance
 - ▶ Application server maintenance is not available through the Installation Manager
- After applying maintenance to the application server, you must re-import the application server
 - ▶ Otherwise, the Installation Manager does not recognize the updated maintenance level



WebSphere Application Server V7 uses the Update Installer to apply maintenance. Application server maintenance is not currently available through the Installation Manager. After you apply maintenance to the application server, you must re-import the application server into the Installation Manager. Otherwise, the Installation Manager does not recognize the updated maintenance level.

Installing fix packs newer than Fix Pack 5

- If you are applying newer service than Fix Pack 5 and are working with Installation Manager on a system that uses local repositories:
 - ▶ Use the Update Installer to apply WebSphere Application Server maintenance as normal
 - ▶ Download new local repository content that supports importing WebSphere Application Server at the newer fix pack level
 - ▶ Configure the new repository in Installation Manager
 - ▶ Import the application server
- If you are using the Web repositories, the repository content to support the updated application server import is found automatically



If you are applying newer service than Fix Pack 5 and are working with Installation Manager on a system that uses local repositories, you need to take additional steps to be able to import the application server into IBM Installation Manager. This is because the import operation relies on content in the product repository, and the version of the repository that you download when the product is released only contains the content to support the fix packs that are available at release time and not fix packs that will be available in the future.

To work with new fix packs, use the Update Installer to apply application server maintenance, as normal. Next, download the new local repository package that supports importing the application server at the newer fix pack level and configure the new repository in the Installation Manager. Then you can import the application server.

If your Installation Manager is configured to use the Web repositories that are hosted by IBM, then the repository content to support the updated application server import is found automatically.

Feature pack maintenance

- Maintenance for the Feature Pack for CEA is installed using the Installation Manager
 - ▶ Interface recommends fixes, downloads them from the Web service repository, installs them
- To apply maintenance from a local repository:
 - ▶ Download a local copy of the service repository
 - ▶ Add that repository to your Installation Manager configuration
- Installation Manager finds and recommends maintenance during feature pack installation
 - ▶ Or use the Update wizard to apply maintenance after installation



Maintenance for the Feature Pack for CEA is installed using the Installation Manager. The interface recommends fixes, downloads them from the Web-based service repository, then installs the fixes. The Installation Manager is designed to only allow you to download fixes for your hardware and operating system – for example, if you are using 32-bit hardware, the Installation Manager will not let you apply fixes that have been built for 64-bit hardware. To apply maintenance from a local repository, rather than a Web-based repository, you need to download a local copy of the service repository and add that repository to your Installation Manager configuration. Installation Manager also finds and recommends maintenance during product installation, or you can use the Update wizard to apply maintenance after installation.

Section

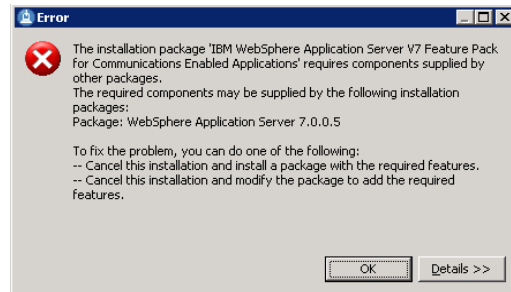
Enforcing fixes



The Installation Manager includes features that enforce fix levels for WebSphere Application Server.

Enforcing fix packs at 7.0.0.5 or higher

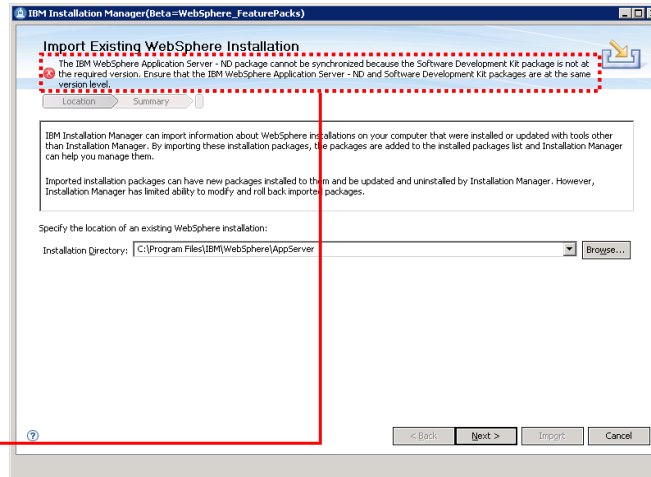
- The IBM WebSphere Application Server Feature Pack for Communications Enabled Applications requires 7.0.0.5 or higher
- The Installation Manager does not allow you to install the feature pack unless the application server is at the correct fix pack level
- Use the Update Installer to apply application server maintenance, and then re-import the application server



The IBM WebSphere Application Server Feature Pack for Communications Enabled Applications requires WebSphere Application Server 7.0.0.5 or higher. The Installation Manager does not allow you to install the feature pack unless the application server is at the correct fix pack level. If you see an error panel similar to the one shown above, that typically means that the version of WebSphere Application Server that you imported into the Installation Manager is at an older maintenance level. To get past this, you need to use the Update Installer to apply any application server maintenance, then re-import the application server into Installation Manager.

Enforcing SDK fixes

- Fix Pack 5 for the application server has multiple packages
- To be able to import your WebSphere Application Server installation into the Installation Manager, you must apply BOTH:
 - ▶ The application server maintenance package
 - ▶ The Java™ SDK maintenance package



WebSphere Application Server fix packs have multiple packages. To be able to import your WebSphere Application Server installation into the Installation Manager, you just apply both the application server maintenance package and the Java SDK maintenance package for the fix pack. The Feature Pack for CEA requires Fix Pack 5 or higher.

SDK maintenance example

- Download the fix pack packages you need from the WebSphere Application Server support site
- For example, for 32-bit Linux[®] on AMD or Intel[®], you must apply at least these two packages:

Download package

[What is Fix Central \(FC\)?](#)
[What is DD?](#)

| Download | RELEASE DATE | LANGUAGE | SIZE(Bytes) | Download Options | | |
|------------------------------------|--------------|------------|-------------|------------------|-----|----|
| 32-bit x86 AMD/Intel AppServer | 03/27/2009 | US English | 584125905 | FC | FTP | DD |
| 32-bit x86 AMD/Intel AppClient | 03/27/2009 | US English | 233257699 | FC | FTP | DD |
| 32-bit x86 AMD/Intel Plugins | 03/27/2009 | US English | 3450577 | FC | FTP | DD |
| 32-bit x86 AMD/Intel IBM HTTP.Svc | 03/27/2009 | US English | 2772178 | FC | FTP | DD |
| 32-bit x86 AMD/Intel Java SDK | 03/27/2009 | US English | 72333819 | FC | FTP | DD |
| 32-bit x86 DMZ Secure Proxy Server | 03/27/2009 | US English | 142968990 | FC | FTP | DD |



You can download application server and SDK fix packages from the WebSphere Application Server support site. This page shows a sample screen capture for the 32-bit Linux downloads for Fix Pack 3 for WebSphere Application Server. In this example, you need to download and install both of the fix packages that are highlighted in red – AppServer and Java SDK.

Section

Summary



This section gives a summary of the what you have learned in this presentation.

Summary

- To apply application server maintenance, use the Update Installer
- To apply feature pack maintenance, use the Installation Manager
- The Installation Manager enforces fixes for WebSphere Application Server



You need to use different maintenance tools depending on whether you are installing application server fixes or feature pack fixes. For the application server, you must use the Update Installer to apply maintenance, then re-import the application server. For the feature pack, you must use the Installation manager to apply maintenance. The Installation manager enforces WebSphere Application Server fixes by not allowing you to install the feature pack on a back level version of the server and by requiring that both the application server and SDK fixes are at the same level.

Feedback

Your feedback is valuable

You can help improve the quality of IBM Education Assistant content to better meet your needs by providing feedback.

- Did you find this module useful?
- Did it help you solve a problem or answer a question?
- Do you have suggestions for improvements?

Click to send e-mail feedback:

mailto:iea@us.ibm.com?subject=Feedback_about_CEAFP_Maintenance.ppt

This module is also available in PDF format at: ../CEAFP_Maintenance.pdf



You can help improve the quality of IBM Education Assistant content by providing feedback.

Trademarks, copyrights, and disclaimers

IBM, the IBM logo, ibm.com, and the following terms are trademarks or registered trademarks of International Business Machines Corporation in the United States, other countries, or both: WebSphere

If these and other IBM trademarked terms are marked on their first occurrence in this information with a trademark symbol (® or ™), these symbols indicate U.S. registered or common law trademarks owned by IBM at the time this information was published. Such trademarks may also be registered or common law trademarks in other countries. A current list of other IBM trademarks is available on the Web at "Copyright and trademark information" at <http://www.ibm.com/legal/copytrade.shtml>

Intel, are trademarks or registered trademarks of Intel Corporation in the United States, other countries, or both.

Java, and all Java-based trademarks and logos are trademarks of Sun Microsystems, Inc. in the United States, other countries, or both.

Linux is a registered trademark of Linus Torvalds in the United States, other countries, or both.

Other company, product, or service names may be trademarks or service marks of others.

Product data has been reviewed for accuracy as of the date of initial publication. Product data is subject to change without notice. This document could include technical inaccuracies or typographical errors. IBM may make improvements or changes in the products or programs described herein at any time without notice. Any statements regarding IBM's future direction and intent are subject to change or withdrawal without notice, and represent goals and objectives only. References in this document to IBM products, programs, or services does not imply that IBM intends to make such products, programs or services available in all countries in which IBM operates or does business. Any reference to an IBM Program Product in this document is not intended to state or imply that only that program product may be used. Any functionally equivalent program, that does not infringe IBM's intellectual property rights, may be used instead.

THE INFORMATION PROVIDED IN THIS DOCUMENT IS DISTRIBUTED "AS IS" WITHOUT ANY WARRANTY, EITHER EXPRESS OR IMPLIED. IBM EXPRESSLY DISCLAIMS ANY WARRANTIES OF MERCHANTABILITY, FITNESS FOR A PARTICULAR PURPOSE OR NON-INFRINGEMENT. IBM shall have no responsibility to update this information. IBM products are warranted, if at all, according to the terms and conditions of the agreements (for example, IBM Customer Agreement, Statement of Limited Warranty, International Program License Agreement, etc.) under which they are provided. Information concerning non-IBM products was obtained from the suppliers of those products, their published announcements or other publicly available sources. IBM has not tested those products in connection with this publication and cannot confirm the accuracy of performance, compatibility or any other claims related to non-IBM products.

IBM makes no representations or warranties, express or implied, regarding non-IBM products and services.

The provision of the information contained herein is not intended to, and does not, grant any right or license under any IBM patents or copyrights. Inquiries regarding patent or copyright licenses should be made, in writing, to:

IBM Director of Licensing
IBM Corporation
North Castle Drive
Armonk, NY 10504-1785
U.S.A.

Performance is based on measurements and projections using standard IBM benchmarks in a controlled environment. All customer examples described are presented as illustrations of how those customers have used IBM products and the results they may have achieved. The actual throughput or performance that any user will experience will vary depending upon considerations such as the amount of multiprogramming in the user's job stream, the I/O configuration, the storage configuration, and the workload processed. Therefore, no assurance can be given that an individual user will achieve throughput or performance improvements equivalent to the ratios stated here.

© Copyright International Business Machines Corporation 2009. All rights reserved.

Note to U.S. Government Users - Documentation related to restricted rights-Use, duplication or disclosure is subject to restrictions set forth in GSA ADP Schedule Contract and IBM Corp.