



IBM Software Group

## **IBM WebSphere Application Server Feature Pack for Communications Enabled Applications**

### ***Collaboration dialog widget***



@business on demand.

© 2009 IBM Corporation  
Updated July 29, 2009

This presentation will discuss the IBM WebSphere® Application Server Feature Pack for Communications Enabled Applications collaboration dialog widget.

## Agenda

- Collaboration dialog widget overview
- Collaboration dialog widget
- Co-browse widget
- Summary



This presentation will begin with an overview of the collaboration dialog widget. You will then look at some examples and how to embed the co-browse widget into your Web page to launch the collaboration dialog widget.

## Section

# ***Collaboration dialog widget overview***



This section will discuss an overview of the collaboration dialog widget.

## Collaboration dialog widget

- This widget generates a modal window that shares Web session data between two users
- Other widgets extend this widget to embed the shared pop up window in a Web page
- Custom Web collaboration enabled widgets can be built quickly and easily by extending this CEA widget
- This widget is embedded in the click to call, call notification, and co-browsing widgets



The collaboration dialog widget is a Dojo pop up window that allows a Web page to be browsed by two parties simultaneously.

A single Web session is shared by the two parties in a co-browse session, allowing them to view the same Web page at the same time, and to both see the navigation of the Web site. One party can drive the browsing of the co-browsing session, and can point out things to the other party that they are viewing on the Web pages using a feature to highlight various Web page information.

The collaboration dialog widget can be launched from a Web page that has an embedded co-browsing, click to call, or call notification widget.

## Co-browsing example

- Two people chatting using instant messaging, user A and user B, both browsing the same hardware store Web site
- Both looking at drills
- User A clicks co-browse option in the Web site
- Site provides a URL to user A which she instant messages to user B
- User B enters the URL from user A into their Web browser
- Collaboration dialog widget opens in Caller B's browser view and they can see caller A's browser page
- Call A points out the cost of a drill by highlighting the cost in the page
- Both A and B agree that the drill is not what they need



Co-browsing can be a valuable tool added to a Web site and can be used to allow two parties to view a Web page together.

An example of when this can be applied, is when two people are chatting using instant messaging while they are both browsing the same hardware store Web site.

They are both looking at drills on the Web site deciding which one to buy. User A clicks on the co-browse option in the Web page. They then pass a generated URL to user B by way of an instant message. User B enters the provided URL into their Web browser address input field, and the two callers are connected in a co-browsing session using the collaboration dialog widget. User A navigates the co-browse session to show user B a particular drill. When they are both looking at the drill, user A highlights the price in the page for user B.

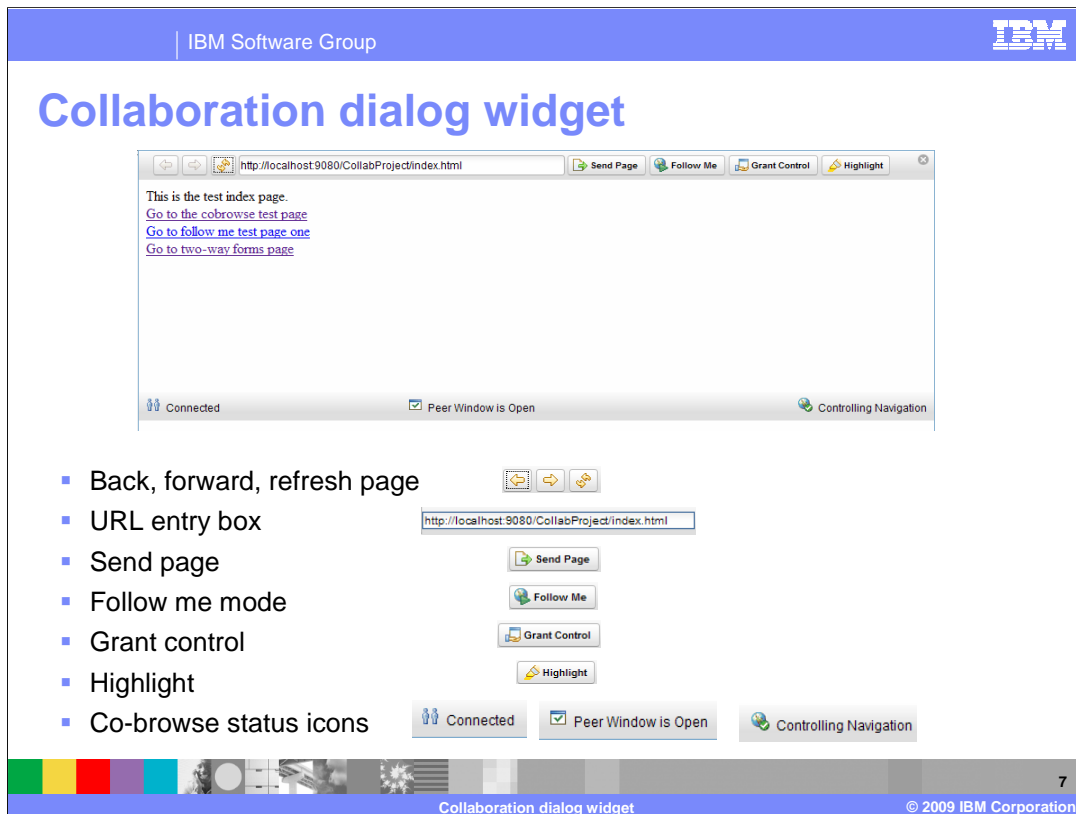
The co-browse widget generates a URL to pass to the peer in the co-browsing session to kick off the collaboration dialog widget.

## Section

# *Collaboration dialog widget*



This section will discuss the collaboration dialog widget and its features.



The collaboration dialog widget is a pop up Dojo widget that displays Web page content between two users.

You can see in the images above, that the collaboration dialog widget has several icons and buttons for navigating a co-browsing session.

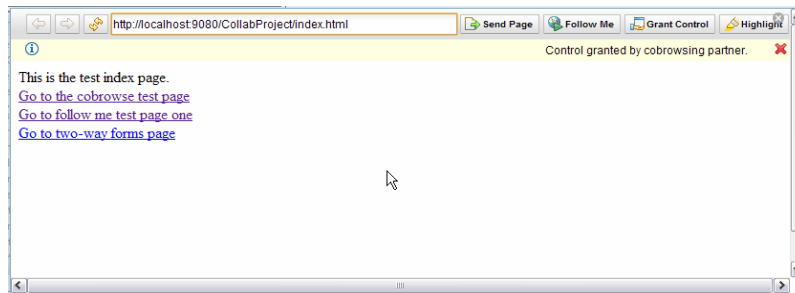
At the top of the page you can see that there is a URL entry box, similar to a Web browser. There are also Web navigation buttons that allows the co-browsing user to go back or forward while browsing Web pages in the collaboration dialog widget. There are buttons to handle the co-browsing behavior as well. The send page button sends the current page that a co-browser is viewing to the co-browsing peer collaboration dialog box. If **Follow Me** mode is enabled, then when the driving co-browser clicks on a link, the page navigation is automatically sent to the co-browsing peers collaboration dialog widget.

The Grant Control button allows the person driving the co-browsing session to grant control to the co-browsing peer. This will allow the peer to either send the co-browsing user a page using the send page option, or enable follow me mode themselves to guide the other co-browser while navigating the Web site.

Each party in the co-browsing session has access to the Highlight button. Pressing on the highlight button allows both parties to select HTML elements in the page being browsed and highlight them.

There are three icons at the bottom of the collaboration dialog widget that indicate the status of the co-browsing session. These icons indicate whether you are connected to a peer in the co-browsing session, if the peer has the collaboration dialog window open or not, and indicates who is controlling the navigation of the co-browsing session.

## Control granted



- Co-browse control granted message displayed

When one party in the co-browsing session grants control to the other party to drive the Web navigation, a control granted message is displayed. This will alert the peer co-browser that they now have access to be controlling the Web navigation.



## Section

### ***Co-browse widget***



This section will discuss the co-browse widget that can be embedded in a Web page to launch the collaboration dialog widget.

## Co-browsing widget

- Launching point for the collaboration dialog widget
- The initiating party clicks the co-browse widget's create button and is given a URL to pass to their peer
- Peer clicks on the URL and is take to a page with the widget and joins the session
- At this time both parties see the collaboration dialog launched
- The co-browse session initiator can drive the session, change pages and use the highlight feature to point out things on the page



The co-browsing widget can be embedded into a Web page to launch a co-browsing session between two peers.

The co-browsing widget has a button that generates a URL. The party that is initiating the co-browsing session will press that button to generate a URL that they pass to their co-browsing peer. When the peer enters that URL into their browser, the collaboration dialog will open in each of the co-browsing peers Web browsers.

The initiator of the co-browsing session is by default the member of the co-browsing session that has access to control the navigation of the co-browsing session. The collaboration dialog features can then be used to navigate the Web site and share control of the co-browsing session with the co-browsing peer.

## Embedding the co-browse widget

Create an invitation link for a collaboration session

- 1) Import CEA Dojo toolkit
  - ▶ <script type="text/javascript" src="./ceadojo/dojo/dojo.js">
  - ▶     djconfig="parseOnLoad: true, isDebug: true"></script>
  
- ▶ 2) Add the style sheet declarations
  - ▶ @import "./ceadojo/cea/widget/Cobrowse/Cobrowse.css";
  - ▶ @import "./ceadojo/cea/widget/CollaborationDialog/CollaborationDialog.css";
  
- 3) Add the co-browse widget to the page
  - ▶ <div ceadojoType="cea.widget.Cobrowse"
    - joinCollaborationUri="./ceadojo/cea/tests/test\_Cobrowse.html"
    - defaultCollaborationUri="./cobrowseWelcome.html">



When the CEA feature pack co-browsing widget is embedded into a Web page it is displayed as you see above.

There is a button labeled create that you can push to generate the co-browsing session URL.

To add the co-browsing widget to a Web page you must copy the ceadojo directory into your webContent folder of your Web project.

The ceadojo directory is installed with the IBM WebSphere Feature Pack for Communications Enabled Applications in the <was\_home>/feature\_packs/cea/javascript directory.

To embed this widget into a Web page, there are three steps involved. First, you import the CEA Dojo toolkit into the page using the script declaration. Secondly, you add the style sheet declarations for the co-browse and collaboration dialog widgets. Finally, adding co-browse widget to the page using the div tag will add the co-browse widget to the page.

The joinCollaborationUri parameter must specify a page with the embedded co-browse widget, and must be capable of accepting an additional parameter.

## Section

### *Summary*



This section will summarize the collaboration dialog widget presentation.

## Summary

- Collaboration dialog widget shares Web pages between two parties in a co-browsing session
- Follow me mode allows one party to drive the co-browsing session and the other party's collaboration dialog will display the pages being browsed
- Access can be granted to the co-browsing peer to allow them to drive the co-browsing session
- Co-browsing widget can be embedded into a Web page as a kick off point for the collaboration dialog widget



The collaboration dialog widget allows two parties to share a Web session.

One party can control the Web session. They can send the co-browsing peer individual pages using the send page function. They can also enable follow me mode so that the co-browsing peer sees the navigation of the Web page as the driving party navigates a Web site.

The driving party in the co-browsing session can grant control to the co-browsing peer to allow them to drive the Web navigation in the collaboration dialog widget.

Each party has the ability to highlight information in the Web pages being browsed.

Web navigation buttons allow the controlling party to drive the co-browsing session and navigate the collaboration dialog browsing as they can in a Web browser.

The co-browsing widget can be embedded in a Web page to allow users to kick off a collaboration dialog co-browsing Web session.

## Feedback

### Your feedback is valuable

You can help improve the quality of IBM Education Assistant content to better meet your needs by providing feedback.

- Did you find this module useful?
- Did it help you solve a problem or answer a question?
- Do you have suggestions for improvements?

Click to send e-mail feedback:

[mailto:iea@us.ibm.com?subject=Feedback\\_about\\_CEAFP\\_CollaborationWidget.ppt](mailto:iea@us.ibm.com?subject=Feedback_about_CEAFP_CollaborationWidget.ppt)

This module is also available in PDF format at: [../CEAFP\\_CollaborationWidget.pdf](http://CEAFP_CollaborationWidget.pdf)



You can help improve the quality of IBM Education Assistant content by providing feedback.

## Trademarks, copyrights, and disclaimers

IBM, the IBM logo, ibm.com, and the following terms are trademarks or registered trademarks of International Business Machines Corporation in the United States, other countries, or both: WebSphere

If these and other IBM trademarked terms are marked on their first occurrence in this information with a trademark symbol (® or ™), these symbols indicate U.S. registered or common law trademarks owned by IBM at the time this information was published. Such trademarks may also be registered or common law trademarks in other countries. A current list of other IBM trademarks is available on the Web at "Copyright and trademark information" at <http://www.ibm.com/legal/copytrade.shtml>

Access, and the Windows logo are registered trademarks of Microsoft Corporation in the United States, other countries, or both.

Other company, product, or service names may be trademarks or service marks of others.

Product data has been reviewed for accuracy as of the date of initial publication. Product data is subject to change without notice. This document could include technical inaccuracies or typographical errors. IBM may make improvements or changes in the products or programs described herein at any time without notice. Any statements regarding IBM's future direction and intent are subject to change or withdrawal without notice, and represent goals and objectives only. References in this document to IBM products, programs, or services does not imply that IBM intends to make such products, programs or services available in all countries in which IBM operates or does business. Any reference to an IBM Program Product in this document is not intended to state or imply that only that program product may be used. Any functionally equivalent program, that does not infringe IBM's intellectual property rights, may be used instead.

THE INFORMATION PROVIDED IN THIS DOCUMENT IS DISTRIBUTED "AS IS" WITHOUT ANY WARRANTY, EITHER EXPRESS OR IMPLIED. IBM EXPRESSLY DISCLAIMS ANY WARRANTIES OF MERCHANTABILITY, FITNESS FOR A PARTICULAR PURPOSE OR NONINFRINGEMENT. IBM shall have no responsibility to update this information. IBM products are warranted, if at all, according to the terms and conditions of the agreements (for example, IBM Customer Agreement, Statement of Limited Warranty, International Program License Agreement, etc.) under which they are provided. Information concerning non-IBM products was obtained from the suppliers of those products, their published announcements or other publicly available sources. IBM has not tested those products in connection with this publication and cannot confirm the accuracy of performance, compatibility or any other claims related to non-IBM products.

IBM makes no representations or warranties, express or implied, regarding non-IBM products and services.

The provision of the information contained herein is not intended to, and does not, grant any right or license under any IBM patents or copyrights. Inquiries regarding patent or copyright licenses should be made, in writing, to:

IBM Director of Licensing  
IBM Corporation  
North Castle Drive  
Armonk, NY 10504-1785  
U.S.A.

Performance is based on measurements and projections using standard IBM benchmarks in a controlled environment. All customer examples described are presented as illustrations of how those customers have used IBM products and the results they may have achieved. The actual throughput or performance that any user will experience will vary depending upon considerations such as the amount of multiprogramming in the user's job stream, the I/O configuration, the storage configuration, and the workload processed. Therefore, no assurance can be given that an individual user will achieve throughput or performance improvements equivalent to the ratios stated here.

© Copyright International Business Machines Corporation 2009. All rights reserved.

Note to U.S. Government Users - Documentation related to restricted rights-Use, duplication or disclosure is subject to restrictions set forth in GSA ADP Schedule Contract and IBM Corp.

