

# IBM WebSphere Application Server Feature Pack for XML

## Installation Manager overview



This presentation provides an overview of IBM Installation Manager, the tool that is used to install the WebSphere® Application Server Feature Pack for XML.

---

## Table of contents

- IBM Installation Manager overview
- Usage and benefits

This presentation begins by giving an overview of IBM Installation Manager, and then describes the usage scenario for installing the feature pack for XML and some of the benefits of using the Installation Manager technology.

## ***IBM Installation Manager overview***

This section provides an overview of IBM Installation Manager and the features it provides.

## IBM Installation Manager overview

- IBM Installation Manager is an application that makes it easy to download, install, update, and uninstall many IBM software products from a single user interface
  - The Installation Manager is used to install the WebSphere Application Server Feature Pack for XML
- Using Installation Manager, you can:
  - Download and install product packages from a Web repository
  - Select exactly which product packages to install so that you download only the features you need
    - Reduces product footprint and download time
  - Configure a local product repository if you need to install products on a system without internet access

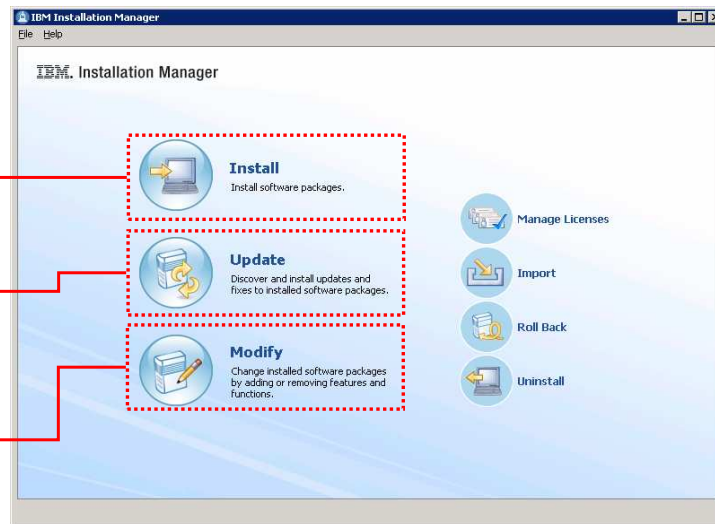
IBM Installation Manager is a common installer for many IBM software products that you can use to install this WebSphere Application Server feature pack. This feature pack is to be installed by Installation Manager rather than by the programs based on InstallShield MultiPlatform (ISMP) that are used to install, update, and uninstall previous versions of WebSphere Application Server. Installation Manager is a single installation program that can use remote or local software repositories to install, modify, or update new WebSphere Application Server products. It determines and shows available packages—including products, fix packs, ifixes, and so on—checks prerequisites and interdependencies, and installs the selected packages. You also use Installation Manager to easily uninstall the packages that it installed. Installation Manager supports installing products from a Web-based repository, or a local repository. This repository structure allows you to select which features you need to install so that you can reduce your product footprint, and, if using a Web repository, reduce your download time because you are only downloading the features you need. The download process for getting installation images and fixes for products that use ISMP-based technology require you to manually select the appropriate operating system and hardware architecture. Installation Manager simplifies this process by only allowing you to download and install packages that are suitable for your operating system and hardware.

## Installation Manager features (1 of 2)

The **Install** wizard walks you through installing new products

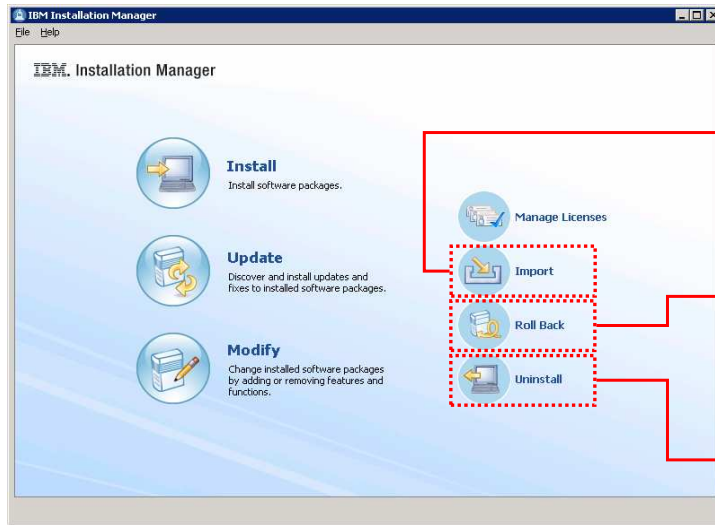
The **Update** wizard discovers and installs updates and fixes

The **Modify** wizard can add or remove product features



The Installation Manager includes several wizards that guide you through installing, updating, and uninstalling software products. The Install wizard is the starting place for installing new software packages. It will access the repositories you have configured, provide a list of packages available for installation, and step you through the installation process. The Update wizard discovers and installs updates and fixes to your software packages – this is the interface you use to apply software maintenance or update your products to a new version. This wizard displays and recommends fixes and maintenance packages that are targeted to your operating system and set of installed products. You can also apply refresh packs to update your software to the latest version. Installation Manager allows you to select from a set of product features that you want to install for some products. If you do not choose to install a feature while installing a product, you can use the Modify wizard to add that feature to the product later, or remove a feature that has already been installed. The feature pack for XML is built as a single product package and does not contain features, so you do not need to use the Modify wizard when working with this feature pack.

## Installation Manager features (2 of 2)



The **Import** wizard associates the installation manager with external software packages

The **Roll Back** wizard removes service

The **Uninstall** wizard removes software packages from your computer

The Import wizard allows you to point to an existing product installation on your system and link it to Installation Manager. For example, before installing the feature pack for XML, you need to import an installation of WebSphere Application Server V7 so that you can install the feature pack on top of the application server. The Import button is not present until you add a WebSphere repository to the Installation Manager. The Roll Back wizard allows you to move your product back to a previous version of service – for example, moving a product from Fix Pack Y to Fix Pack X. The Uninstall wizard allows you to remove software packages from your computer and remove links to products that you have imported. You use the Uninstall wizard to uninstall the feature pack for XML and to remove the link between Installation Manager and WebSphere Application Server V7 – sometimes called unimporting the application server. The Manage Licenses wizard is not used by WebSphere products at this time. Also, the import and unimport operations are only available with WebSphere Application Server V7. Do not try to use Installation Manager to import or unimport other products, like Rational® Application Developer.

## ***Usage and benefits***

This section describes a sample usage scenario and benefits of using Installation Manager.

## Example usage scenario

Scenario: Installing a feature pack on top of WebSphere Application Server	
Earlier ISMP-based installation solution	New IBM Installation Manager solution
<ul style="list-style-type: none"> <li>▪ Locate and download the feature pack installation package</li> <li>▪ Install each WebSphere Application Server feature pack separately               <ul style="list-style-type: none"> <li>–During installation, you can select an existing installation or browse to a different existing installation</li> </ul> </li> </ul> <p><b>NOTE:</b> The required WebSphere Application Server fix pack is bundled with the feature pack even if the fix pack has already been applied to the existing installation</p>	<ul style="list-style-type: none"> <li>▪ Install the IBM Installation Manager</li> <li>▪ Start the IBM Installation Manager, and point to the WebSphere repository</li> <li>▪ Browse to and import the WebSphere Application Server installation into Installation Manager</li> <li>▪ Select and install the new feature packs</li> </ul>

Earlier installation methods for installing feature packs for WebSphere Application Server used ISMP-based tools. To install these feature packs, you had to locate and download the feature pack installation package and install each feature pack separately. During installation, you can select an existing installation or browse to a particular existing installation location. For each feature pack, the required WebSphere Application Server fix pack is bundled with the feature pack, even if the fix pack has already been applied to the existing installation.

The feature pack for XML uses the new IBM Installation Manager solution. Before installing the feature pack, you need to install IBM Installation Manager. The version of IBM Installation Manager made available with the feature pack is automatically configured to point to the Web repositories for WebSphere products. If you are using a local repository, you need to point to the local repository location. Then, browse to and import the WebSphere Application Server installation into Installation Manager and select and install the new feature packs. The required WebSphere Application Server fix packs are not packaged with the feature packs.



## Installation Manager benefits

- Single interface to install, update, uninstall many IBM software products
  - Replaces dedicated installers and uninstallers and maintenance tools
- Work with multiple packages at the same time
- Reduce product download footprint
  - Choose which features to install; Installation Manager only downloads the content you need
  - Required fixes are not bundled with products but downloaded separately
- Simplifies product maintenance
  - Identifies recommended fixes and can automatically download them
  - Only lets you download fixes for your platform

IBM Installation Manager offers several benefits over earlier installation technologies. The single interface is used to install, update, and uninstall many IBM software products, for example, WebSphere Application Server Feature Pack for XML and Rational Application Developer. Installation Manager replaces dedicated installers and uninstallers and other maintenance tools. Installation Manager allows you to work with multiple packages at the same time. You can install multiple feature packs and related fixes all in one pass through the user interface; you can also uninstall multiple packages simultaneously. Installation Manager helps you reduce your product download footprint. You choose the features you want to install, and Installation Manager downloads only the content you need. Required fixes are not bundled with products but are downloaded separately. Installation Manager also simplifies product maintenance. It identifies recommended fixes for you and can automatically download and apply them. It only lets you download fixes for your platform.

## ***Summary***

This section gives a summary of this presentation.

## Summary

- Use the IBM Installation Manager to install, update, and uninstall the WebSphere Application Server Feature Pack for XML
- Single interface that streamlines product operations, reduces download footprint, and simplifies maintenance

IBM Installation Manager is the tool you use to install, update, and uninstall the WebSphere Application Server Feature Pack for XML. Installation Manager is a single interface that helps you streamline product operations by enabling you to work with multiple product packages at once. By using Web repositories and allowing you to select only the product features you need, Installation Manager can help to reduce product footprint. The Installation Manager also simplifies maintenance by identifying recommended maintenance for your installed products, targeted to your operating system.



## Feedback

Your feedback is valuable

You can help improve the quality of IBM Education Assistant content to better meet your needs by providing feedback.

- Did you find this module useful?
- Did it help you solve a problem or answer a question?
- Do you have suggestions for improvements?

Click to send e-mail feedback:

[mailto:iea@us.ibm.com?subject=Feedback\\_about\\_XMLFEP\\_IM\\_Overview.ppt](mailto:iea@us.ibm.com?subject=Feedback_about_XMLFEP_IM_Overview.ppt)

This module is also available in PDF format at: [../XMLFEP\\_IM\\_Overview.pdf](..../XMLFEP_IM_Overview.pdf)

You can help improve the quality of IBM Education Assistant content by providing feedback.



## Trademarks, disclaimer, and copyright information

IBM, the IBM logo, ibm.com, Rational, and WebSphere are trademarks or registered trademarks of International Business Machines Corp., registered in many jurisdictions worldwide. Other product and service names might be trademarks of IBM or other companies. A current list of other IBM trademarks is available on the Web at "[Copyright and trademark information](http://www.ibm.com/legal/copytrade.shtml)" at <http://www.ibm.com/legal/copytrade.shtml>

THE INFORMATION CONTAINED IN THIS PRESENTATION IS PROVIDED FOR INFORMATIONAL PURPOSES ONLY. WHILE EFFORTS WERE MADE TO VERIFY THE COMPLETENESS AND ACCURACY OF THE INFORMATION CONTAINED IN THIS PRESENTATION, IT IS PROVIDED "AS IS" WITHOUT WARRANTY OF ANY KIND, EXPRESS OR IMPLIED. IN ADDITION, THIS INFORMATION IS BASED ON IBM'S CURRENT PRODUCT PLANS AND STRATEGY, WHICH ARE SUBJECT TO CHANGE BY IBM WITHOUT NOTICE. IBM SHALL NOT BE RESPONSIBLE FOR ANY DAMAGES ARISING OUT OF THE USE OF, OR OTHERWISE RELATED TO, THIS PRESENTATION OR ANY OTHER DOCUMENTATION. NOTHING CONTAINED IN THIS PRESENTATION IS INTENDED TO, NOR SHALL HAVE THE EFFECT OF, CREATING ANY WARRANTIES OR REPRESENTATIONS FROM IBM (OR ITS SUPPLIERS OR LICENSORS), OR ALTERING THE TERMS AND CONDITIONS OF ANY AGREEMENT OR LICENSE GOVERNING THE USE OF IBM PRODUCTS OR SOFTWARE.

© Copyright International Business Machines Corporation 2010. All rights reserved.