



IBM Software Group

WebSphere® Commerce V6.0 feature pack 4

Assets tool in Management Center



@business on demand.

© 2008 IBM Corporation
Updated October 30, 2008

This presentation covers the assets tool in WebSphere Commerce version 6 feature pack 4.

Agenda

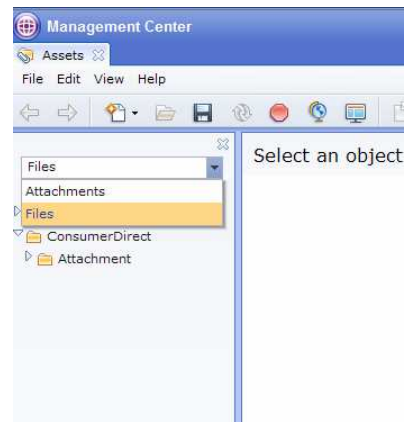
- Assets tool overview
- Managed files
- Attachments
- Attachment reference



This presentation first introduces the enhanced attachment features in the assets tool compared to WebSphere Commerce version 6.0. It shows how you can use this tool to create your managed files and attachments. It also shows how you can assign your attachments to other business objects as references.

Assets tool in feature pack 4

- Assets tool
 - ▶ Improved on attachment functions in Accelerator
 - ▶ Redesigned attachment creation flow
 - ▶ Features provided
 - Manage files, directories and attachments
 - View attachment references



Attachments were introduced in V6.0 and provide the ability for you to associate Web content, such as files or URLs, to other business objects, such as products, categories and marketing content. You can manage uploaded files or externally reference files using URL paths. You can also assign these assets from within Accelerator to other business objects.

The assets tool in feature pack 4 has improved on the attachment functions within Accelerator. Now you can more easily manage your assets such as files, directories and the attachments in the assets tool. The search feature has also been enhanced in this new tool allowing you to search both managed files and attachments more easily.

Assets tool enhancements

Assets tool	Accelerator
One place to manage attachments and files	Attachment utilities are embedded inside of catalog and marketing tools
Attachments can be referenced by both catalog and marketing	An attachment is only available for one business object
In an attachment, one language can be selected by multiple assets	One language can only be selected by one asset
File content replacement with different source file name	Managed file name and source name must be same in order to replace content
Simple attachment and file path search Advanced attachment search	Find the attachments by file, but the result list shows the file of the resulting attachment in specific languages



In Accelerator, the attachment functionality is embedded inside the catalog and marketing tools. The attachments created in the catalog tool or marketing tool can not be referenced by business objects outside of the tool.

In feature pack 4, all assets created in the assets tool can be shared by both the catalog and marketing tools.

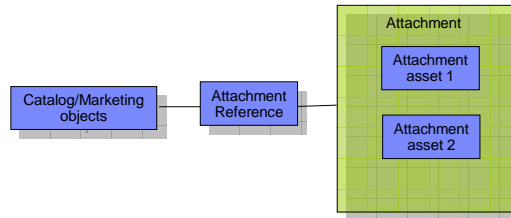
The assets tool also removes the limitation that only one asset can be assigned to a particular language in an attachment. You now can assign the same language to multiple assets.

In Accelerator you can only replace a file's content using a file with the same name in your file system. The assets tool now allows you to replace a file's content with any file.

In Accelerator you can only search attachments by file name. With the new assets tool you can search attachments and managed files with many options.

Attachment

- Attachment
 - ▶ A business object which can be referred to by other business objects to provide additional materials
- Attachment assets
 - ▶ Managed files
 - ▶ URLs
 - ▶ Associate languages with asset
 - ▶ No language selected means all languages apply
 - ▶ More than one asset can have the same language
- Attachment reference
 - ▶ Relationship between attachments and other business objects
 - ▶ Sales Catalog, Category, Category Entry and Marketing content



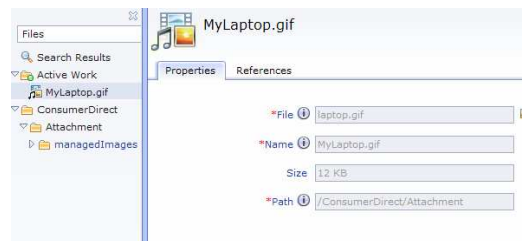
An attachment in feature pack 4 is a business object. It has its own property view. Attachments can be referred to by other business objects to provide additional support materials.

Two types of attachment asset can be contained in an attachment: File and URL. After you assign an asset to an attachment, you need select languages for that asset. If you don't assign any language to the asset, by default that asset is used for all languages the store supports.

To use an attachment from another business object, you need to create a reference for it. In feature pack 4 there are four business objects that support attachment references, as listed in this slide. The master catalog does not support attachment references because it does not have a properties view.

Managed file manipulation

- Browse files in directory tree
 - ▶ Extended sites can view both extended site and asset store files
- Preview file in pop-up browser
- Replace file content from file property view
 - ▶ File name is not changeable
- File search
 - ▶ File name
 - ▶ Path with wild card *
 - ▶ Case sensitive



Browse the navigation tree under the current store to locate managed directories and managed files. If you are in an extended site store, you can view the files under directories for both current store and asset store.

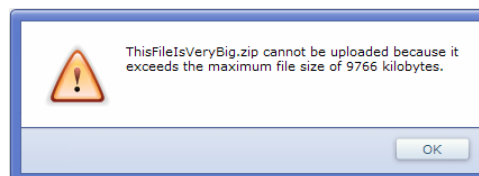
You can preview a file's content in a pop-up window. This pop-up window can be launched from the pop-up menu of the file list view.

Replacing file content is done from a file's property view. You can select a file from your file system and the file name does not have to be same as the one in the asset tool.

You can search for managed files from the "find" area in the menu bar or from the Utilities view. If the wild card * is contained in your search string, the tool search files by file path, otherwise it searches by file name.

Create a managed file

- Create a new directory if you need one
- Select a file from your file system
- Value in **Name** field and file name in your file system can be different
- Name value can not be changed after file is uploaded
- Default max file size 10MB



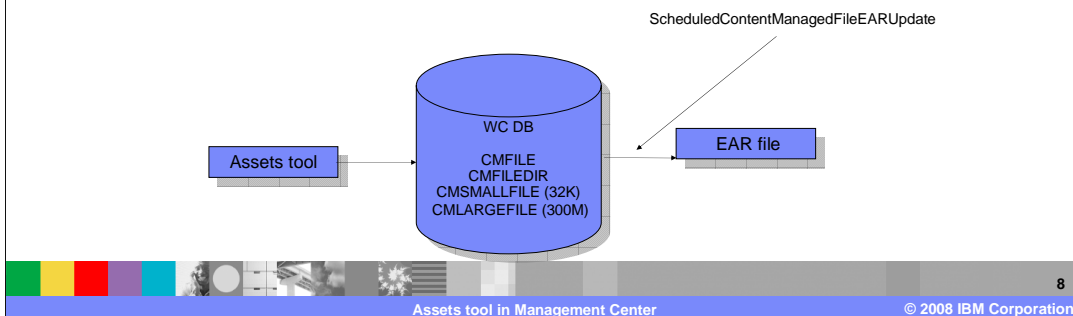
To create a managed file, open a new file properties view, then select a file from your file system by clicking the file selection icon.

After you select a file, the file path, file name and file size are automatically populated into the fields of the properties view. You can change the default file name after it is populated. Once the file is uploaded to the server, the file name can not be changed.

By default the maximum upload file size is 10MB. You can change this size by modifying the code. This customization is discussed in the **Asset tool for developers** presentation.

Managed file life cycle without workspace

- Files are loaded from Assets tool to database
- Scheduled job **ScheduledContentManagedFileEARUpdate** copies files to WebSphere Commerce EAR file
- In federated WebSphere Application Server environment, manually run **fileprop** utility to publish managed files to managed nodes
- Use store preview utility to view the managed files before application EAR gets updated



Managed files are initially loaded from the assets tool to the WebSphere Commerce database. A scheduled job is called every 30 minutes to copy the managed files from the WebSphere Commerce database to the WebSphere Commerce EAR file. It copies the files if more than 10 files have been uploaded, or at least one file has been uploaded and 60 minutes have passed.

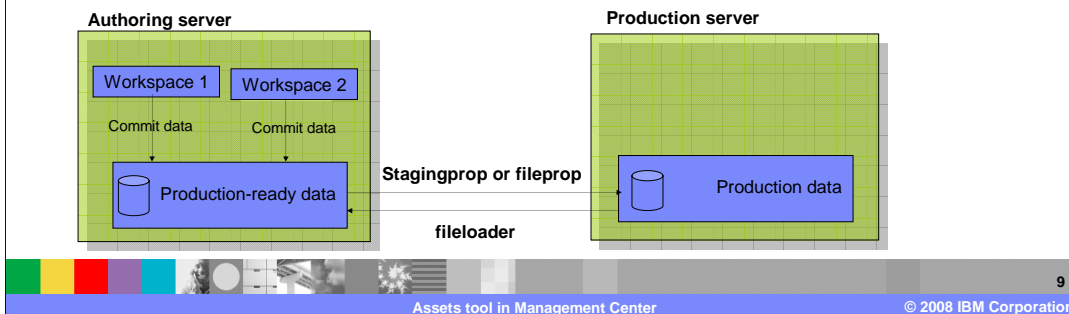
Until the files are copied into the WebSphere Commerce EAR file, you can only view the uploaded files from the store preview utility.

If your production WebSphere Application Server environment has federated nodes, you need to run the fileprop utility to send all new and changed files to the deployment manager, which later pushes the files out to the managed nodes.

Managed file life cycle with workspace

- Select a workspace, upload files from Assets tool to workspace database
- The workspace is committed to the production-ready data
- **stagingprop** or **fileprop** utility is used to copy managed files and their metadata from authoring to production environment
- **fileloader** utility can be used to copy files from production database to authoring server database

Note: Only managed file meta data is copied to production database, files themselves are only copied into the EAR file



Changes in workspaces are made on top of the production-ready data on the authoring server.

When a task group is approved by a task group approver, the uploaded files in a workspace are committed into the production-ready data. **Stagingprop** is used to copy production ready data from the authoring server to the production server. **Stagingprop** in turn calls **fileprop** to copy file metadata and file content to the production server.

Managed file contents are not copied to the WebSphere Commerce database on the production server, instead the file contents are copied into the EAR file.

To copy managed files from the production server to the authoring server, you can use the **fileloader** utility.

The same processes apply when copying managed files from a staging server to a production server, or from a production server to a staging server.

Attachment list and search

- List attachment
 - ▶ Attachments filter
 - ▶ Attachments folder
- Attachment search
 - ▶ Simple search by attachment name or code
 - Case sensitive with wild card *
 - ▶ Advanced search by code, name and file or URL path
 - Results match all criteria specified
 - ▶ Extended sites stores search attachments of both local store and asset store



To view attachments, you need change the filter in the navigation view to attachments and select the attachments folder.

Two types of attachment search are supported: Simple search and advanced search.

Simple search allows you to search by attachment name. This search is case sensitive. The asterisk wild card is supported in the search string.

Advanced search allows you to search for attachments by attachment code, attachment name and file or URL path that is included in the attachment. Only results that match all input values are returned.

For extended sites, if you are in an extended site store, both the local store and asset store's attachments will be returned in the search results.

Create a new attachment

- Enter attachment meta data
- Add assets and select languages
- Two or more assets can share one language
- No language specified means all languages selected

Type	Path	Language (United States English)	Language (Brazilian)
	www.ibm.com /ConsumerDirect/Attachment/manual/sample File.pdf	<input checked="" type="checkbox"/>	<input checked="" type="checkbox"/>

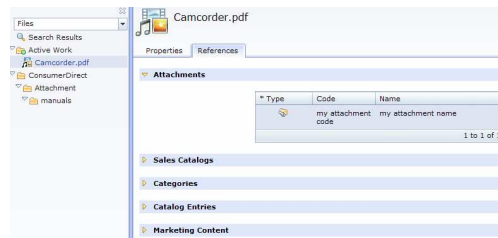
To create a new attachment, you need to provide attachment meta data and add attachment assets into the attachment properties view. You can use the Search and Add button or the Utilities view to add managed files. To add URL assets, you can click the **Link** button on the top of the **Files or URLs** table and then type in the URL directly.

For each asset you add, you need to select languages for it. This language is used by the store front to decide which asset should be displayed to customers. Only the assets whose language is same as the language used by store front are displayed to the customers.

In an attachment, a single language can be selected by multiple assets. If you don't select any language for an asset, this asset is assigned to all languages the store supports.

Managed file reference and file delete

- References tab contains objects using this file
 - ▶ Read only
- Delete file
 - ▶ File can not be deleted if it has any references
 - ▶ Extended sites asset store files can be deleted only authorized to access asset store
 - ▶ Directory can not be deleted if it contains any files



The file's property view contains an rtab. From there you can find all objects that reference this file. The references listed here are read only.

The managed files can be deleted only if they don't have any references. If you are in an extended site store, you can only delete an asset store managed file if you are authorized to access that asset store.

Directories holding the managed files can only be deleted if they do not contain any files.

View and delete attachments

- View attachment
 - ▶ In property view, all fields under **Manage Attachment** tab are editable
 - ▶ Data under **Reference** tab is read only
 - ▶ Object properties section shows workspace locking information
- Delete attachment
 - ▶ An attachment cannot be deleted if it contains a reference to other business objects
 - ▶ Extended sites asset store attachment can not be deleted if user is not authorized to access asset store

The screenshot displays the 'my attachment code' attachment properties in a 'Read-Only' state. The interface includes tabs for 'Manage Attachment' and 'Reference'. The 'Object Properties' section is highlighted with a yellow callout box labeled 'Workspace only', indicating that the attachment is locked by a workspace. The 'General Attachment Information' section contains the following fields:

- Code: my attachment code
- Name (United States English): my attachment name
- Short Description (United States English): my attachment description
- Long Description (United States English): my attachment long description-Maintenance workspace

The 'Files or URLs' section shows a table with the following data:

Type	Path	Language (United Str...	Language (B...
	/ConsumerDirect/Attachment/manuals/Cancorder.pdf		

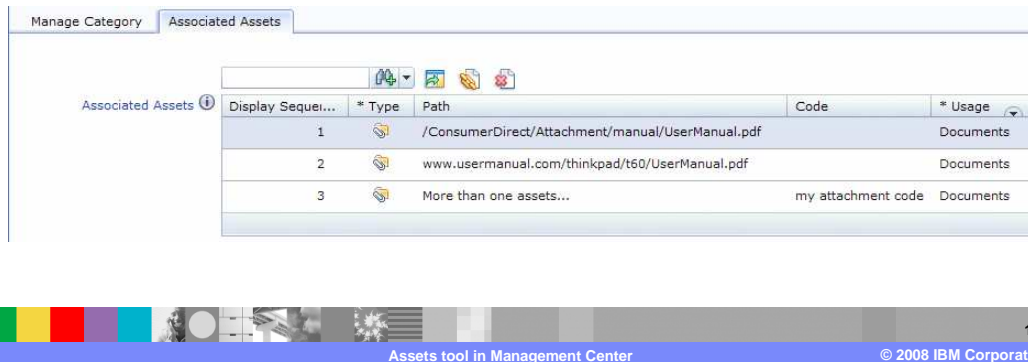
In a non-workspace enabled environment, all the properties under the Manage Attachment tab of the attachment properties view are editable. Under the Reference tab you can see all references this attachment has, these references are read only.

In a workspace enabled environment, if an attachment is locked by another task group, you can see who locked this attachment in the **Object Properties** section.

To delete an attachment, you need to delete all attachment references first and then delete the attachment. For extended sites stores, if you are in an extended sites store, you can delete the asset store's attachment only if you are authorized to access that asset store.

Managing attachments in a catalog

- A new tab **Associated Assets** contains all attachment references
- Add references
 - ▶ Drag and drop attachments
 - ▶ Drag and drop files
 - ▶ Add URL using URL button
 - ▶ Select a Usage



In the catalog tool, the associated assets tab in the object properties view contains the attachment references. You can add existing attachments here. You can also add files or URLs directly into the associated assets table. When you add a file or URL, an attachment is created automatically in the background for the asset that you added.

After you add an attachment, you need to select a **usage** for it.

Attachment for marketing content

- Select Asset type to add an attachment
- Only one attachment allowed for each content object

*my content name

*Name my content name

Type Asset

*Associated Asset

Type	Code	Path
	my attachment code	More than one path found

Text (United States English)

Click action for link No click action



You can also add an attachment to marketing content. In the content properties view, select asset from the **type** drop down list, and then add your attachment into the associated asset table.

Only one attachment is allowed for each marketing content object.

Summary

- Managed files and their life cycle
- Attachments and their usage in business objects



In this presentation, you have seen how to use the assets tool to manage attachment assets. You have also seen how to create attachment references in other Management Center tools, such as the catalog tool and marketing tool.

Feedback

Your feedback is valuable

You can help improve the quality of IBM Education Assistant content to better meet your needs by providing feedback.

- Did you find this module useful?
- Did it help you solve a problem or answer a question?
- Do you have suggestions for improvements?

Click to send e-mail feedback:

mailto:iea@us.ibm.com?subject=Feedback_about_WCS6004_AssetToolOverview.ppt

This module is also available in PDF format at: [../WCS6004_AssetToolOverview.pdf](..../WCS6004_AssetToolOverview.pdf)



You can help improve the quality of IBM Education Assistant content by providing feedback.

Trademarks, copyrights, and disclaimers

The following terms are trademarks or registered trademarks of International Business Machines Corporation in the United States, other countries, or both:

IBM WebSphere

A current list of other IBM trademarks is available on the Web at <http://www.ibm.com/legal/copytrade.shtml>

Product data has been reviewed for accuracy as of the date of initial publication. Product data is subject to change without notice. This document could include technical inaccuracies or typographical errors. IBM may make improvements or changes in the products or programs described herein at any time without notice. Any statements regarding IBM's future direction and intent are subject to change or withdrawal without notice, and represent goals and objectives only. References in this document to IBM products, programs, or services does not imply that IBM intends to make such products, programs or services available in all countries in which IBM operates or does business. Any reference to an IBM Program Product in this document is not intended to state or imply that only that program product may be used. Any functionally equivalent program, that does not infringe IBM's intellectual property rights, may be used instead.

Information is provided "AS IS" without warranty of any kind. THE INFORMATION PROVIDED IN THIS DOCUMENT IS DISTRIBUTED "AS IS" WITHOUT ANY WARRANTY, EITHER EXPRESS OR IMPLIED. IBM EXPRESSLY DISCLAIMS ANY WARRANTIES OF MERCHANTABILITY, FITNESS FOR A PARTICULAR PURPOSE OR NON-INFRINGEMENT. IBM shall have no responsibility to update this information. IBM products are warranted, if at all, according to the terms and conditions of the agreements (for example, IBM Customer Agreement, Statement of Limited Warranty, International Program License Agreement, etc.) under which they are provided. Information concerning non-IBM products was obtained from the suppliers of those products, their published announcements or other publicly available sources. IBM has not tested those products in connection with this publication and cannot confirm the accuracy of performance, compatibility or any other claims related to non-IBM products.

IBM makes no representations or warranties, express or implied, regarding non-IBM products and services.

The provision of the information contained herein is not intended to, and does not, grant any right or license under any IBM patents or copyrights. Inquiries regarding patent or copyright licenses should be made, in writing, to:

IBM Director of Licensing
IBM Corporation
North Castle Drive
Armonk, NY 10504-1785
U.S.A.

Performance is based on measurements and projections using standard IBM benchmarks in a controlled environment. All customer examples described are presented as illustrations of how those customers have used IBM products and the results they may have achieved. The actual throughput or performance that any user will experience will vary depending upon considerations such as the amount of multiprogramming in the user's job stream, the I/O configuration, the storage configuration, and the workload processed. Therefore, no assurance can be given that an individual user will achieve throughput or performance improvements equivalent to the ratios stated here.

© Copyright International Business Machines Corporation 2008. All rights reserved.

Note to U.S. Government Users - Documentation related to restricted rights-Use, duplication or disclosure is subject to restrictions set forth in GSA ADP Schedule Contract and IBM Corp.