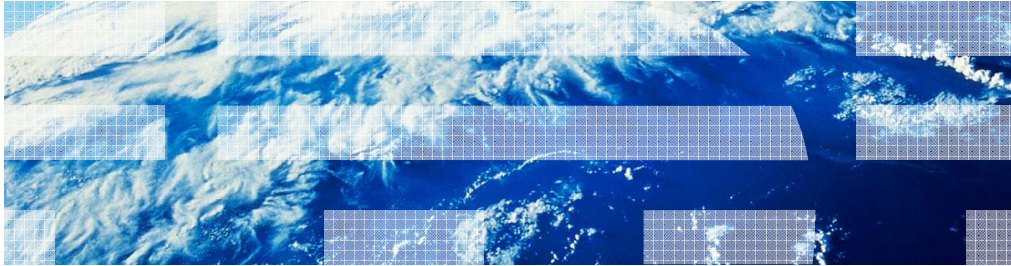


WebSphere® Commerce V7 Feature Pack 5

Catalogs tool enhancements



This presentation provides an overview of the Catalogs tool enhancements in WebSphere Commerce Version 7 Feature Pack 5. You should have a general knowledge of the features in WebSphere Commerce Version 7 before viewing this presentation.

Agenda

- Default Catalog
- Multi-value Attributes
- Extended Sites Catalog Entry Description Override

This presentation will first take you through the default catalog feature, and then show you the multi-value support for attribute dictionary attributes. Finally, it will take you through the extended sites catalog entry description override feature.

Default catalog

You will first hear about the default catalog feature.

Overview

- Specify default catalog in Management Center
- Select from all available catalogs
- Ensure shopper sees default catalog without specifying a catalog in URL
- Language independent
- Supports store models: Aurora, Elite, Mobile, and Android Native Application stores

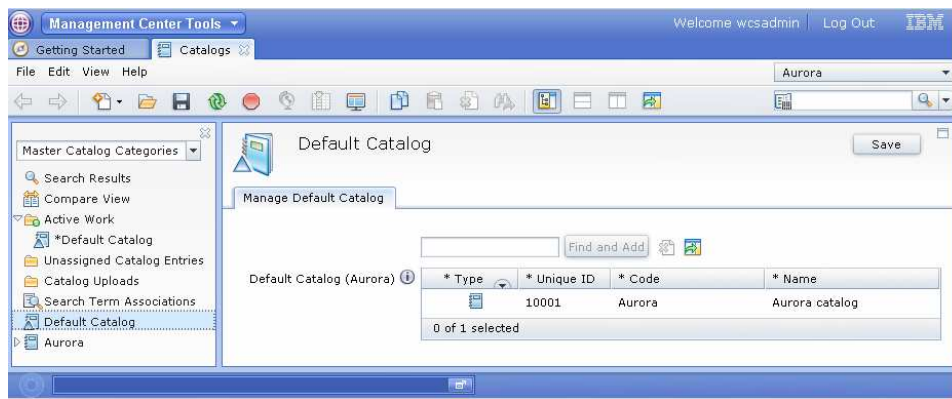
In Feature Pack 5, business users can specify which catalog to display on the storefront through the catalogs tool in Commerce Management Center. The default catalog is the catalog which is exposed to shoppers at store front if there is no catalog specified in store URLs. If the catalog is specified in the URL, then that is the one that is used. Your site can only have one default catalog for a particular store. The default Catalog can be either the master catalog or one of sales catalogs. By default the master catalog is the set default catalog until a different catalog is selected in the Catalogs tool. If your store has more than one catalog, you can specify a catalog to use as a default catalog. The default catalog is language independent, and supports the Aurora, Elite, Mobile and Android Native Application stores.

Default catalog and e-sites

- Can have multiple default catalogs set with extended site store model (one per store)
 - Asset store default catalog
 - Separate default catalog for each e-site
- Master catalog set as default catalog if none specified
- Can set default catalog for a specific e-site only

If your site uses an extended site store model and plans to use the default catalog, your site can have multiple default catalogs set. You can have a default catalog for your asset store and potentially a separate default catalog for each of your extended site stores. If your site does not set a default catalog for its asset store or extended site stores, the master catalog is set as the default catalog. If your site has a default catalog specified for your asset store, but not your extended site stores, your extended site stores uses the default catalog specified for the asset store. The asset store default catalog can only be set and changed in the asset store. When working in an extended site store, you can set the default catalog for that store, including overriding an asset store default catalog that is set as the extended site store default catalog.

Setting the default catalog



- Locate using utility pane's Find or Browse functions
- Drag to grid

The default catalog for your store is set and managed using the Catalogs tool. When using the default catalog, the Catalogs tool provides a central location to control which catalog is displayed to shoppers visiting your store. The default catalog is managed within a new separate page in the Catalogs tool. You can use the utility pane find or browse functions to drag the catalog to the default catalog grid.

Setting the default catalog for an extended sites store model

The screenshot shows the 'Management Center Tools' interface. The main window is titled 'Default Catalog' and contains a 'Manage Default Catalog' section. Under 'Object Properties', there are two tables:

Inherited Default Catalog (Extended Sites Catalog Asset Store)	* Type	Store	* Unique ID	* Code	* Name
		Extended Sites Catalog Asset Store	10051	Extended Sites Catalog Asset Store	Extended Sites Catalog Asset Store
0 of 1 selected					

Default Catalog (AuroraESite)	* Type	Store	* Unique ID	* Code	* Name
		AuroraESite	10651	Spring Sales Catalog Extended Site	Spring Sales Catalog Extended Site
0 of 1 selected					

The right-hand pane shows a list of catalogs under 'All Catalogs':

- Extended Sites Catalog Asset Store
- Fall Sales Catalog Extended Site
- Spring Sales Catalog Extended Site
- Summer Sales Catalog Extended Site
- Winter Sales Catalog Extended Site
- Fall Sales Catalog Asset Store
- Spring Sales Catalog Asset Store
- Summer Sales Catalog Asset Store
- Winter Sales Catalog Asset Store

At the bottom of the interface, a status bar indicates 'Save action completed for Default Catalog'.

Here is a screen capture of the default catalog pane for extended sites. In the default catalog properties when you access the Default Catalog in the explorer view filter, two default catalog tables display. The top table is for setting the default catalog at the asset store level. The bottom table is for setting the default catalog at the extended site store level. When working at the extended site level, the asset store default catalog table is read-only and displays the default catalog that is set at the asset store level. The extended site store default catalog table is for setting the default catalog for the specific extended site store you are working in. If you have access to your asset store and extended site store, you can override the asset store default catalog. Overriding the asset store default catalog provides you with the capability to set a different catalog at the asset store level.

Schema changes

- Database schema changes
 - New table - STOREDEFCAT – identifies which catalog is default for each store front store
- Logical schema changes
 - Catalog noun updated
 - Added new attribute called “default”
- SOA service
 - New service GetDefaultCatalog returns
 - Default catalog
 - OnlineStore noun updated
 - New DefaultCatalog element

CatalogType		
primary		boolean
CatalogIdentifier	[0..1]	CatalogIdentifierType
Description	[0..*]	CatalogDescriptionType
Attributes	[0..*]	NameValuePairType
AttachmentReference	[0..*]	AttachmentReferenceType

A new STOREDEFCAT table is created for storing information about which catalog is the default for each storefront store. The existing Catalog noun is updated to add a new attribute called “default”. A new service call Get Active Catalog service should return the default catalog. The OnlineStore noun is updated to add DefaultCatalog element. The default catalog is set through the ChangeOnlineStore services.

A new Get Default Catalog service will return the default catalog. This service is used by RuntimeServletFilter to get the default catalog. This service is customizable so that you can customize the logic of how to determine which catalog is default. GetOnlineStore Service is updated to return default catalog configurations.

Migrating SEO URLs to use the default catalog

If you are currently:

- Not using any SEO URLs
 - No impact

- Using old SEO URLs
 - No impact

- Using new SEO URLs (V7 FEP3)
 - New SEO URLs will continue to work, but migration process is required to use default catalog feature
 - Bootstrap data needs to be modified to change the catalog ID in token value as empty string
 - Allows `RuntimeServletFilter` to get the default catalog from `STOREDEFECAT` table
 - Migration procedure:

<http://publib.boulder.ibm.com/infocenter/wchelp/v7r0m0/index.jsp?topic=/com.ibm.commerce.management-center.doc/tasks/tpnmigratedefecat.htm>

If your store does not use the SEO URLs introduced in WebSphere Commerce Feature Pack 3, there is no impact on your store URLs when using default catalog. Existing SEO URLs or non-SEO URLs continue to forward visiting shoppers to the store catalog identified by the catalog ID specified in the URL. If your site plans to use the default catalog, remove the hardcoded catalog ids from the URLs. Removing the hard-coded ids cause the `RuntimeServletFilter` to call the get default catalog service and retrieve the default catalog ID, which ensures content from the default catalog displays. If your site uses or plans to use the SEO URLs introduced in WebSphere Commerce Feature Pack 3, the URLs continue to work, however the URLs do not return the default catalog. You must run a migration script to migrate the URLs in order to have the SEO URLs introduced in WebSphere Commerce Feature Pack 3 to use the default catalog.

Limitations

- No support for
 - Data load
 - WebSphere Commerce Accelerator
 - Portal
 - Sales Center

The default catalog is supported for the Aurora and Elite store models, including the Aurora Mobile store model, and the Android Native Application Store. The default catalog settings are only managed using Management Center. You cannot data load the default catalog. The default catalog function is not supported for any other store model, and is not supported for Portal, Sales Center, or WebSphere Commerce Accelerator.

Multi-Value attributes

Next, you will hear about multi-value attributes.

Overview

- Assign one or more values for same descriptive attribute in a catalog entry
- Example
 - Video game products can support up to three gaming platforms
- Available by default when you publish Aurora starter store

The screenshot displays the product management interface for a 'Sports Video Game'. The main product page shows the product name, price (\$30.00), a quantity selector set to 1, and a message stating 'The SKU cannot be purchased at this time.' Below this are buttons for 'Continue shopping' and 'Check Store Availability'. The product description area shows the SKU 'Sports Video Game' and a red-bordered box containing the text 'Supported Platforms: console, mobile, online'.

An overlay window titled 'Sports Video Game' is open, showing the 'Descriptive Attributes' tab. It contains a table with the following data:

Sequence	Type	Code	Name (United States English)	Data type	Value (United States English)
1.0	Supported platform Attribute		Supported Platforms	Text	console
2.0	Supported platform Attribute		Supported Platforms	Text	mobile
3.0	Supported platform Attribute		Supported Platforms	Text	online

At the bottom of the table, it indicates '0 of 3 selected'.

When attribute dictionary management was added in Feature Pack 2, multiple value support was not supported by default. However, because many of you needed this feature, the design supported a customization task to enable this support. In Feature Pack 5, multiple value attribute is officially supported.

You can assign one or more values for the same descriptive attribute in a catalog entry. Assigning multiple values to attributes improves matching your catalog entry attributes to your business needs, improves your catalog attribute management, and enables better search results. The same descriptive attribute can be added in multiple rows with different values assigned to the attribute. For example, if a specific video game supports more than one platform, you can assign more than one attribute value to that product. To do this, you can add multiple rows with the same attribute but different supported values as shown here.

Support for multiple value attributes is available by default when you publish the Aurora starter store. If your store is Madisons or Elite, you must publish the WebSphere Commerce Feature Pack 5 starter store enhancements archive to enable multiple value attribute support


Configuration update

- **SupportMultipleValuesForADAttributes** flag in `wc-business-object-mediator.xml` is defaulted to true
- **supportMultipleValuesForADAttributes** flag in `wc-loader-catalog-entry-AD-attribute-relationship.xml` is defaulted to true
 - Ensures Catalog Upload supports loading multiple value attributes to catalog entry

There are two configuration updates that are changed by default. `SupportMultipleValueForADAttributes` flag is set to true by default in the `wc-business-object-mediator.xml` and `wc-loader-catalog-entry-AD-attribute-relationship.xml`. This makes sure that Catalog upload and data load supports loading multiple value attributes to catalog entries.

Storefront update

Home > Sleek Occasional Table



Sleek Occasional Table
\$179.99
SKU: FUC0-01

The sleek styling makes this occasional table a perfect addition to your home.

Quantity

[Add to Cart](#)
[Add to Shopping List](#)

Available Online
✓ In-Stock
Available In-Store
[Select Store](#)

- JavaServer Pages files and JavaScript in the Aurora store updated to support displaying multiple value attributes
- CatalogEntryHelperDataBean updated to support attributes with multiple values

Description Other Customers Also Purchased

The sleek styling makes this occasional table a perfect addition to your home. Made of oak wood with a tempered glass top and forest green-finish wood frame. Measures 48" in width, 24" in length, and 19" in height. Some assembly required.

- Color: Brown, Black

14 Catalogs tool enhancements © 2012 IBM Corporation

The JavaServer Pages files and JavaScript in the Aurora store are updated to support displaying attributes with multiple values for all catalog entry types, including Product, Item, Kit and Bundle. The CatalogEntryHelperDataBean is updated to support attributes with multiple values. The `getAttributeValueHashMap` method of CatalogEntryHelperDataBean is used by Product Comparison page to display attributes and values. Before Feature Pack 5, it only returned the first value of an attribute if it had more than one value. The enhancement for Feature Pack 5 returns multiple values as a comma separated string like: "XBox,PS3,Wii". This is consistent with the existing way for returning multiple allowed values for defining attributes. The Sample JavaServer Pages files for new SOA storefront services are updated to support displaying attributes with multiple values.

E-site catalog entry description override

Next, you will hear about the Extended sites catalog entry description override feature.

Extended sites and the catalog asset store

- Extended sites business model allows stores to target different audience
- Shared catalog entries are managed in the catalog asset store
- E-site specific catalog entries can be created to allow full control
- Before Feature Pack 5, all extended sites can only display catalog entry information as it exists in the catalog asset store

The extended site business model allows you to create stores targeted at different audiences with data assets shared among the sites. The catalog entries which are shared among all the e-sites are created and updated in the catalog asset store. If you want the extended site stores to have full control of its products without being affected by the changes in the asset store, you need to create local products in the e-site stores.

In Feature Pack 5 the e-site can now override the description related properties of the catalog entry inherited from the asset store. That means, that a shopper at different e-sites will view a different name or description for the shared catalog entry. This is helpful if you have requirements to allow e-sites to specify an e-site specific name or description for the shared catalog asset in order to enhance the shopping experience of shoppers in a premium brand site. This is also helpful if you have different regional suppliers for certain goods and you need to sell the same product with the only difference being the name or description which is specific to the regional supplier. .

What's new in this release?

- Enable extended sites to override description related properties of the catalog entries inherited from asset store
- Applies to all products, items, packages, bundles, kits
 - Name, short description, long description, thumbnail image, full image, auxiliary descriptions, keyword and ability to display to customers
- Use Catalog Upload or Data Load utility to load override information
- Only supports Aurora Extended Sites store model

You can load store specific catalog entry descriptions for your extended site store catalog entries that are shared with other stores. Loading your store-specific descriptions overrides the descriptions for shared catalog entries inherited from your catalog asset store. Overriding catalog entry descriptions provides you with the ability to customize the catalog entries that display on your storefront to better meet your business needs.

This applies to all products, items, packages, bundles and kits. You can use catalog upload or data load to load the override information. Currently, only the Aurora Extended Sites store model supports the override.

WebSphere Commerce search with description overrides

- View description override information only in storefront of your extended site store
- Shoppers can search catalog entries with override or inherited description information
- Description override details stored in a separate database table
- Original asset store description information remains associated with catalog entry and displays within Management center

Overriding the descriptive information changes only the descriptive information that displays in the storefront. When you override any inherited descriptive information, shoppers that visit your store can search for catalog entries with either the override or inherited descriptive information. When shoppers search your store with either the override or inherited descriptive information the results display the catalog entries with the description override information. When you load a description override, the override details are stored in a separate database table than the catalog entry descriptive information from your asset store. Overriding the inherited descriptive information does not remove the original descriptive information from your database. The original catalog entry information continues to display for the catalog entry within Management Center.

Support and limitations

- Workspaces support
 - Load description overrides and undo any description override changes
 - Cannot preview description overrides inside workspaces
- Management Center support
 - Cannot view or manage overrides in Management Center
- No support for
 - Accelerator
 - Sales Center
 - Coremetrics – no override information in any reports

When using workspaces, you can load description overrides and undo any description override changes. When updating the description override in a workspace for an extended site store the entire catalog entry is not locked. A business user that is working in a different workspace can still update the shared catalog entry properties such as the name, description, and list price. A business user in a workspace for a different extended site store can create or update the description override for that catalog entry for their own store. You cannot view or manage overrides in Commerce Management Center, you can only view them on the storefront. There is no support for Accelerator, Sales Center, and Coremetrics.

Schema changes

- New database tables
 - CATENTDESCOVR
 - store information about catalog entry description override
 - CATOVRGRP
 - store details of the override groups
 - STORECATOVRGRP
 - stores the relationships between store entities and catalog override groups used to display catalog on storefront

Three new tables have been created CATENTDESCOVR, CATOVRGRP and STORECATOVRGRP. The table CATENTDESCOVR is used to store information about catalog entry description override. The table CATOVRGRP stores the details of the override groups. The table STORECATOVRGRP is used to hold the relationship between store entities and catalog override groups that are used to display the catalog in the store front.

Loading extended site override data using Catalog Upload

- Download sample available on Information Center
- Sample CSV catalog entry columns
 - PartNumber
 - LanguageId
 - Name
 - ShortDescription
 - LongDescription
 - Thumbnail
 - AuxDescription1
 - FullImage
 - AuxDescription2
 - Published
 - Keyword
 - Field1
 - Field2
 - Field3
 - Delete

Product managers can use the Catalog Upload feature in the Catalogs tool to add catalog entry description overrides to your extended site storefront. Loading description overrides can replace the storefront descriptions of catalog entries that your store inherits from your asset store. There is a sample CSV file available in the Information Center.

New Mediator for data load

- New mediator `CatalogEntryDescriptionOverrideMediator.java`
- Replace or delete modes available
- Use store ID in context to find override group to be used to create or replace description override

A new mediator `CatalogEntryDescriptionOverridMediator .java` is created to handle the catalog entry description override. Depending on the operation mode specified in the CSV file, the data load will either replace or delete the entry using the fields provided in the CSV file.

The data load will use the store ID in the context to find the override group to be used to create or replace the description override. If the override group cannot be found, a proper error is returned to inform you that the store is not enabled for the override.

If the `StoreIdentifier`, used to resolve the catalog entry, and `CatalogEntryUniqueld` are not provided in the CSV file, the mediator will first try to find the catalog entry in the current store. If it cannot be found, it will then go to its parent stores in store path to see whether it can resolve this catalog entry.

Migrating extended site stores to load description overrides

- Extended site stores published on previous feature pack must prepare store before loading overrides
- Pre-requisites
 - Extended site store uses WebSphere Commerce search and catalog storefront SOA web services
 - Upgrade WebSphere Commerce search to Feature Pack 5 with the search index setup migration utility
- Procedure
 - Determine internal unique identifier for your store
 - Add records to CATOVRGRP and STORECATOVRGRP tables
 - Build WebSphere Commerce search index
 - Restart server

If you have existing extended site stores, there is a migration script to assist in migrating the existing stores so that those stores can provide the catalog entry description override. This script will create an override group for the extended site store and create the relationship in the database table to indicate that the extended site store uses the newly created override group as the store based override.

Ensure that your extended site store uses WebSphere Commerce search and the catalog storefront SOA web services. If your store does not use WebSphere Commerce search and the catalog storefront SOA web services, you need to upgrade your store. If your store uses WebSphere Commerce search, upgrade your WebSphere Commerce search to the Feature Pack 5 level with the search index setup migration utility.

Summary

- Default Catalog
- Multi-value Attributes
- Extended Sites Catalog Entry Description Override

In this presentation, you learned about the default catalog feature, and heard about the multi-value support for attribute dictionary attributes. Finally, you saw the extended sites catalog entry description override feature.

References

- **Default catalog**
 - <http://publib.boulder.ibm.com/infocenter/wchelp/v7r0m0/topic/com.ibm.commerce.management-center.doc/concepts/cpndefaultcatalog.htm>
- **Multiple value attributes**
 - <http://publib.boulder.ibm.com/infocenter/wchelp/v7r0m0/topic/com.ibm.commerce.management-center.doc/concepts/cpnattribdic.htm>
- **Catalog entry description override**
 - <http://publib.boulder.ibm.com/infocenter/wchelp/v7r0m0/topic/com.ibm.commerce.management-center.doc%2Fconcepts%2Fcpnesiteoverrideatdesc.htm>

Here are further references in the information center on the topics you have heard in the presentation.

Feedback

Your feedback is valuable

You can help improve the quality of IBM Education Assistant content to better meet your needs by providing feedback.

- Did you find this module useful?
- Did it help you solve a problem or answer a question?
- Do you have suggestions for improvements?

Click to send email feedback:

mailto:iea@us.ibm.com?subject=Feedback_about_CatalogsToolUpdates.ppt

This module is also available in PDF format at: ../CatalogsToolUpdates.pdf

You can help improve the quality of IBM Education Assistant content by providing feedback.

Trademarks, disclaimer, and copyright information

IBM, the IBM logo, ibm.com, and WebSphere are trademarks or registered trademarks of International Business Machines Corp., registered in many jurisdictions worldwide. Other product and service names might be trademarks of IBM or other companies. A current list of other IBM trademarks is available on the web at "[Copyright and trademark information](http://www.ibm.com/legal/copytrade.shtml)" at <http://www.ibm.com/legal/copytrade.shtml>

THE INFORMATION CONTAINED IN THIS PRESENTATION IS PROVIDED FOR INFORMATIONAL PURPOSES ONLY. Other company, product, or service names may be trademarks or service marks of others.

THE INFORMATION CONTAINED IN THIS PRESENTATION IS PROVIDED FOR INFORMATIONAL PURPOSES ONLY. WHILE EFFORTS WERE MADE TO VERIFY THE COMPLETENESS AND ACCURACY OF THE INFORMATION CONTAINED IN THIS PRESENTATION, IT IS PROVIDED "AS IS" WITHOUT WARRANTY OF ANY KIND, EXPRESS OR IMPLIED. IN ADDITION, THIS INFORMATION IS BASED ON IBM'S CURRENT PRODUCT PLANS AND STRATEGY, WHICH ARE SUBJECT TO CHANGE BY IBM WITHOUT NOTICE. IBM SHALL NOT BE RESPONSIBLE FOR ANY DAMAGES ARISING OUT OF THE USE OF, OR OTHERWISE RELATED TO, THIS PRESENTATION OR ANY OTHER DOCUMENTATION. NOTHING CONTAINED IN THIS PRESENTATION IS INTENDED TO, NOR SHALL HAVE THE EFFECT OF, CREATING ANY WARRANTIES OR REPRESENTATIONS FROM IBM (OR ITS SUPPLIERS OR LICENSORS), OR ALTERING THE TERMS AND CONDITIONS OF ANY AGREEMENT OR LICENSE GOVERNING THE USE OF IBM PRODUCTS OR SOFTWARE.

© Copyright International Business Machines Corporation 2012. All rights reserved.