



IBM Software Group

IBM® WebSphere® Everyplace® Deployment for Windows and Linux Version 6

Installation



@business on demand.

© 2005 IBM Corporation
Updated October 3, 2005

This presentation explains how to install the IBM WebSphere Everyplace Deployment for Windows and Linux Version 6 client platform.

Goals

- Understand the how to install and configure IBM WebSphere Everyplace Deployment for Windows and Linux Version 6

The goal of this presentation is to understand the serviceability support provided by IBM WebSphere Everyplace Deployment for Windows and Linux Version 6.

Agenda

- Installation
- Configuration

The agenda of this presentation is to explain how to install and configure the client platform.

Section

Installation

Let's start with an explanation of the how to install the IBM WebSphere Everyplace Deployment for Windows and Linux Version 6 client.

CD/Image Contents

- **index.html – Getting Started**
 - ▶ links to installation executable
 - ▶ links to Release Notes
- **install directory**
 - ▶ installation executable files
- **updates directory**
 - ▶ platform – contains additional Platform features (including NLV features)
 - ▶ eval – contains Developer Tools and Tech Preview/Evaluation features
 - ▶ service – contains System Management installation features
- **applet directory**
 - ▶ Sample web pages and applet for launching install from a server-based HTML page
- **docs/<locale>**
 - ▶ Users_Guide.pdf – Information on using the platform
 - ▶ System_Admin_Guide.pdf – Information on configuration, security, integration with the Device Manager Server



Installation Pre-requisites

- Minimum hardware requirements include the following for the client machines:
 - ▶ 256MB RAM
 - ▶ 150 MB free disk space
 - ▶ x86 processors capable of supporting Windows XP
- Windows IA32 and Linux IA32 environments are supported as follows:
 - ▶ Microsoft® Windows XP Service Pack 1
 - ▶ Microsoft Windows XP Service Pack 2
 - ▶ RedHat® EL 3.0 WS with GTK support – Update 3
 - Only Mozilla 1.4.3 version of the browser is supported

Installation Types

- **Standard Install**
 - ▶ Installs the runtime for users to use
 - ▶ Desktop Launchable UI
 - ▶ Use setupwin32.exe or setuplinux.bin to install
- **System Management Install**
 - ▶ Intended to be a management agent for IBM WebSphere Everyplace Deployment Version 6 Server, WebSphere Everyplace Device Manager usage
 - ▶ Should be installed at the direction of an Enterprise's Administrator
 - ▶ Runs as a service
 - ▶ Use setupwin32_service.bat or setuplinux_service.sh to install

Installation Options – Setup Type

- **Minimal**
 - ▶ A set of plug-ins sufficient to run the platform and the workbench
 - ▶ Contains at least equivalent function of WCTME EO 5.8.1 installation
- **Full**
 - ▶ Installs all plugins included with Minimal and additional plugins that provide enhanced capabilities
- **Locale specific plugins organized into Group 1 and Group 2 Language Features**
 - ▶ installed based on system setting
 - ▶ additional groups can be optionally installed
- **Post-install updates**
 - ▶ All plugins part of Full, not installed with Minimal, can be installed later

Approximate sizes for Windows as reported by InstallShield	Minimal	Full
US English	89.3M	96.9M
NLV Group 1	97.5M	105.1M
NLV Group 2	102.2M	109.9M

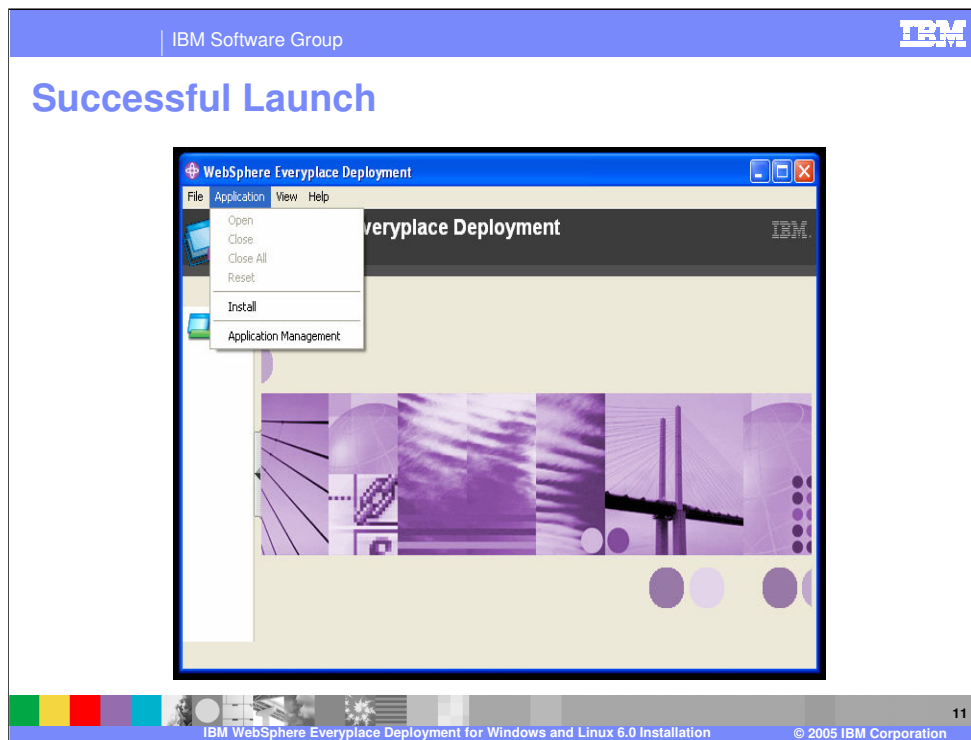
Installation Options – Enterprise Management Agent Configuration

- Agent can be configured during installation
 - ▶ Device User Name and Password
 - ▶ Management Server location
- Post-install configuration through Preference Page

- Mention SSL Configuraiton issues

Installation Options - Migration

- Installer detects existing installation of WCTME EO 5.8.1
- Applications and some configuration information can be copied from the 5.8.1 installation
- Plug-ins, configuration, and workspace info will be copied to new workspace
- Additional data located on drive will not necessarily be migrated
- Should follow up migration with an Application Verification Test. If the Application fails, uninstall and perform a fresh install of the application into IBM WebSphere Everyplace Deployment for Windows and Linux Version 6.



- On successful install, icon added to desktop for installing user
- Launch icons added to the start menu

Install Layout

- Plug-in locations
 - ▶ c:\Program Files\IBM\WED (Default install directory on Windows)
 - ▶ /opt/IBM/WED (default install directory on Linux)
 - eclipse – Plug-ins provided by eclipse.org
 - rcp – Plug-ins provided by IBM
 - shared – Intended for application plug-ins to be shared among multiple users
 - ▶ User home directory
 - *User_home_directory\IBM\RCP\<rcp.install.id>\userid\applications\user* – applications only available to this user
- Each directory has features and plugins directory
- Launcher
 - ▶ <install_location>\rcp\rcplauncher.exe
 - ▶ <install_location>/rcp/rcplauncher
- Main configuration file
 - ▶ <install_location>\rcp\rcpinstall.properties



Additional Install Topics

- **Silent Installation**
 - ▶ InstallShield uses options files for input, eliminating the UI
 - ▶ Simplifies installation process for inexperienced users
 - ▶ Documented in the System Administrator's Guide
- **Customized Installation**
 - ▶ Enables distribution of a customized platform (such as additional bundles)
 - ▶ Would typically be used within an enterprise deployment
 - ▶ Documented in the System Administrator's Guide
- **Sample One Click Installation**
 - ▶ Mechanism to provide a one-click web-based installation of the client platform
 - ▶ Can also be silently installed using this method
 - ▶ Documented in the System Administrator's Guide



Section

Configuration

Next, let's cover how to configure the IBM WebSphere Everyplace Deployment for Windows and Linux Version 6 client.

Eclipse Workspace and Configuration

- Default workspace location
 - ▶ *User_home_directory\IBM\RCP*
- Default Configuration location
 - ▶ *User_home_directory\IBM\RCP*
- rcp.install.id – ID generated at platform installation
- Workspace and Configuration location can be changed via command line options

Configuration – rcpininstall.properties

- Provides configuration information used by the launcher to start the Java code
- Default required info provided during installation
- File can be edited to define Java system properties, additional library paths, VM arguments, and more.



rcpinstall.properties example (Windows)

```
#Thu Aug 25 09:09:02 CDT 2005
-Dcom.ibm.osg.webcontainer.port=0
install.configuration=user
vm=C:\Program Files\IBM\WED\rcp\eclipse/plugins/com.ibm.rcp.j2se.win32.x86_1.4.2.SR2\jre\bin\javaw.exe
library.path.append-=;C:\Program Files\IBM\WED\rcp\eclipse/plugins/com.ibm.tivoli.agentext.win32.x86_1.8.0.20050825\InventoryScanner; \
C:\Program Files\IBM\WED\rcp\eclipse/plugins/com.ibm.db2e.win32.x86_8.2.1.5-20050825\os\win32\x86; \
C:\Program Files\IBM\WED\rcp\eclipse/plugins/com.ibm.mobileservices.isync.win32.x86_8.2.1.6-20050825\os\win32\x86;
-Dcom.ibm.pvc.osgiagent.core.logfileloc=C:\Program Files\IBM\WED\rcp
-Dprovisioning.errorFile=C:\Program Files\IBM\WED\rcp\deploy\error.log
rcp.installId=1124978908123
Xbootclasspath.append=C:\Program Files\IBM\WED\rcp\loggerboot.jar;C:\Program Files\IBM\WED\rcp\properties
rcp.install.id=1124978908123
vmarg.com.ibm.jre.Xj9-=Xj9
-Dprovisioning.configFile=C:\Program Files\IBM\WED\rcp\deploy\install.properties
vmarg.com.ibm.jre.Xquickstart-=Xquickstart
application=com.ibm.eswe.workbench.WctWorkbenchApplication
cp=C:\Program Files\IBM\WED\rcp\startup.jar
-Djava.util.logging.config.class=com.ibm.rcp.core.logger.boot.LoggerConfig
```



Trademarks, Copyrights, and Disclaimers

The following terms are trademarks or registered trademarks of International Business Machines Corporation in the United States, other countries, or both:

IBM	CICS	IMS	MOSeries	Tivoli
IBM (logo)	Cloudscape	Informix	OS/390	WebSphere
e (logo) business	DB2	iSeries	OS/400	xSeries
AIX	DB2 Universal Database	Lotus	pSeries	zSeries

Java and all Java-based trademarks are trademarks of Sun Microsystems, Inc. in the United States, other countries, or both.

Microsoft, Windows, Windows NT, and the Windows logo are registered trademarks of Microsoft Corporation in the United States, other countries, or both.

Intel, ActionMedia, LANDesk, MMX, Pentium and ProShare are trademarks of Intel Corporation in the United States, other countries, or both.

UNIX is a registered trademark of The Open Group in the United States and other countries.

Linux is a registered trademark of Linus Torvalds.

Other company, product and service names may be trademarks or service marks of others.

Product data has been reviewed for accuracy as of the date of initial publication. Product data is subject to change without notice. This document could include technical inaccuracies or typographical errors. IBM may make improvements and/or changes in the product(s) and/or program(s) described herein at any time without notice. Any statements regarding IBM's future direction and intent are subject to change or withdrawal without notice, and represent goals and objectives only. References in this document to IBM products, programs, or services does not imply that IBM intends to make such products, programs or services available in all countries in which IBM operates or does business. Any reference to an IBM Program Product in this document is not intended to state or imply that only that program product may be used. Any functionally equivalent program, that does not infringe IBM's intellectual property rights, may be used instead.

Information is provided "AS IS" without warranty of any kind. THE INFORMATION PROVIDED IN THIS DOCUMENT IS DISTRIBUTED "AS IS" WITHOUT ANY WARRANTY, EITHER EXPRESS OR IMPLIED. IBM EXPRESSLY DISCLAIMS ANY WARRANTIES OF MERCHANTABILITY, FITNESS FOR A PARTICULAR PURPOSE OR NON-INFRINGEMENT. IBM shall have no responsibility to update this information. IBM products are warranted, if at all, according to the terms and conditions of the agreements (e.g., IBM Customer Agreement, Statement of Limited Warranty, International Program License Agreement, etc.) under which they are provided. Information concerning non-IBM products was obtained from the suppliers of those products, their published announcements or other publicly available sources. IBM has not tested those products in connection with this publication and cannot confirm the accuracy of performance, compatibility or any other claims related to non-IBM products. IBM makes no representations or warranties, express or implied, regarding non-IBM products and services.

The provision of the information contained herein is not intended to, and does not, grant any right or license under any IBM patents or copyrights. Inquiries regarding patent or copyright licenses should be made, in writing, to:

IBM Director of Licensing
IBM Corporation
North Castle Drive
Armonk, NY 10504-1785
U.S.A.

Performance is based on measurements and projections using standard IBM benchmarks in a controlled environment. All customer examples described are presented as illustrations of how those customers have used IBM products and the results they may have achieved. The actual throughput or performance that any user will experience will vary depending upon considerations such as the amount of multiprogramming in the user's job stream, the I/O configuration, the storage configuration, and the workload processed. Therefore, no assurance can be given that an individual user will achieve throughput or performance improvements equivalent to the ratios stated here.

© Copyright International Business Machines Corporation 2005. All rights reserved.

Note to U.S. Government Users - Documentation related to restricted rights-Use, duplication or disclosure is subject to restrictions set forth in GSA ADP Schedule Contract and IBM Corp.