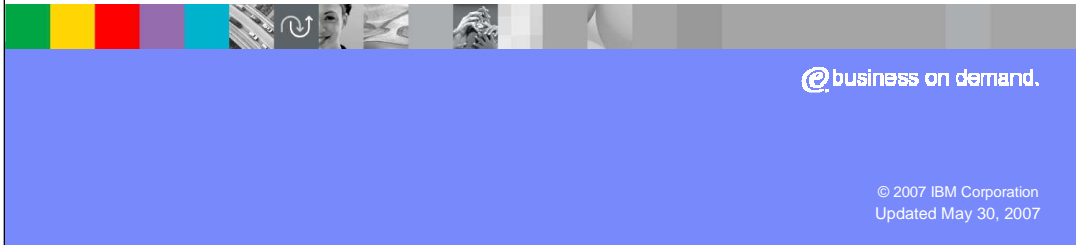




IBM Software Group

WebSphere® Message Broker Toolkit V6.0.2

Toolkit scenario part 2: Quick start wizard



@business on demand.

© 2007 IBM Corporation
Updated May 30, 2007

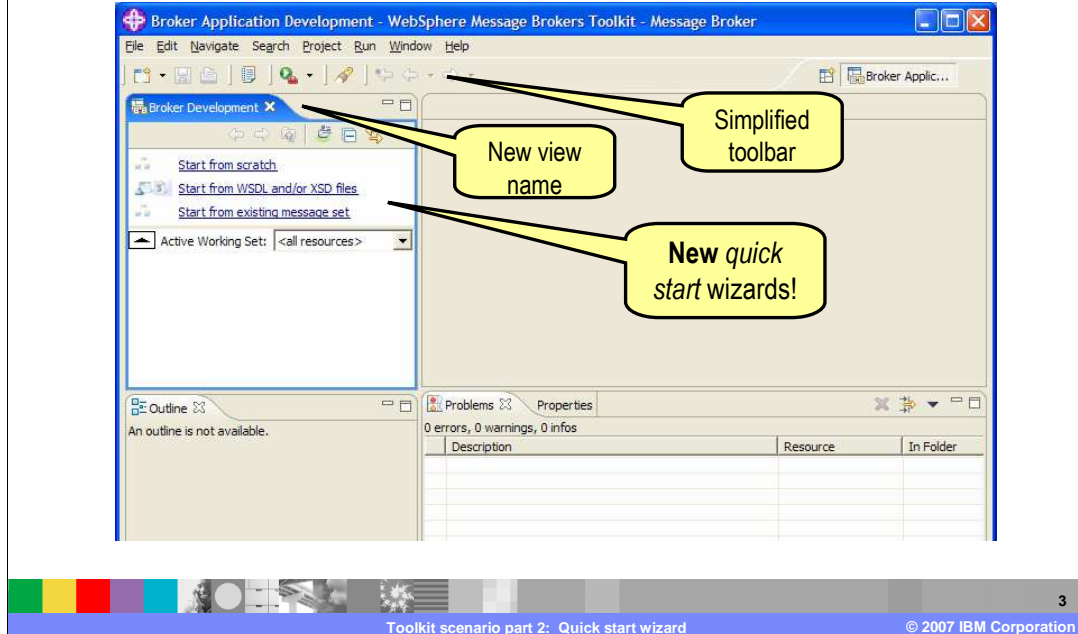
This second module of the scenario begins the solution by using the Quick Start Wizard for WSDL files.

Section

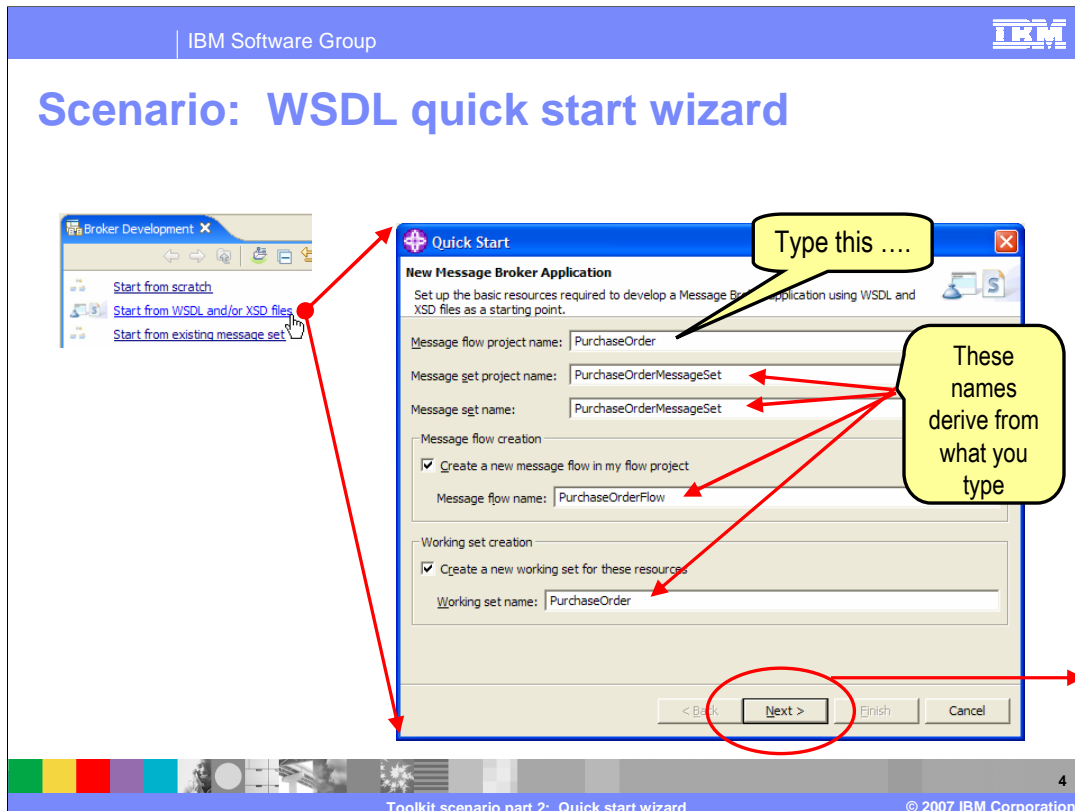
Scenario solution: Quick start wizard

This section of the scenario solution outlines using the Quick Start Wizard for WSDL to define the project, message set and message flow.

Scenario: Step 1

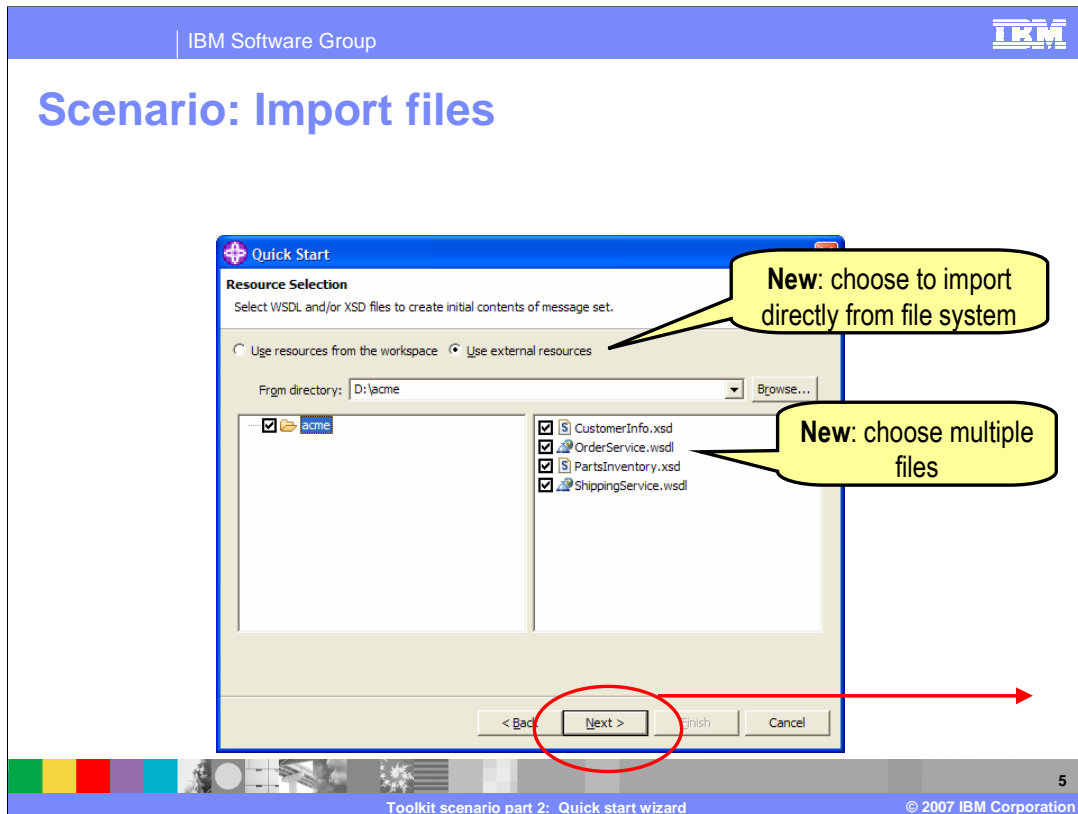


To begin, start the WebSphere Message Broker Toolkit V6.0.2. The first time you start the Message Brokers Toolkit, the Broker Application Development perspective is displayed. Once in the Application Development perspective, you will see the new quick start wizards, including the one for starting from WSDL and XSD files.



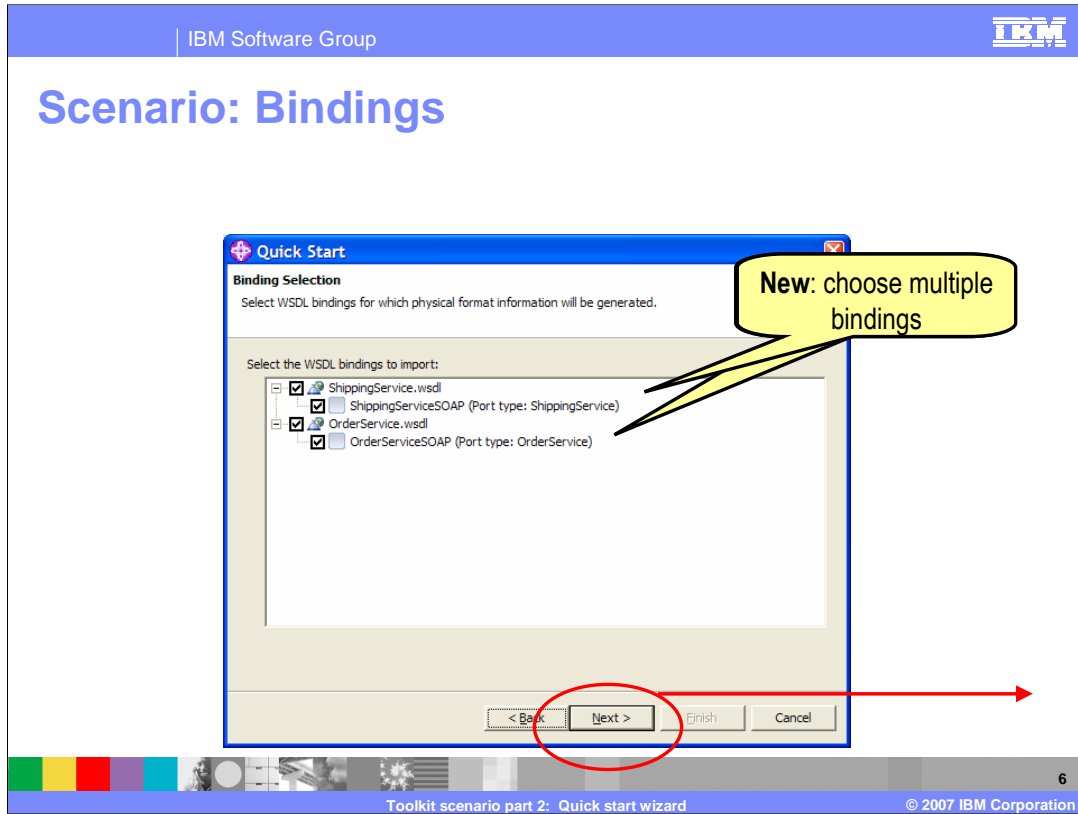
The WSDL quick start wizard provides a place to enter your message flow project name. When you enter the root name for your new application, the remaining names are derived. While these can be changed, in this scenario, use the derived names by selecting Next.

Scenario: Import files

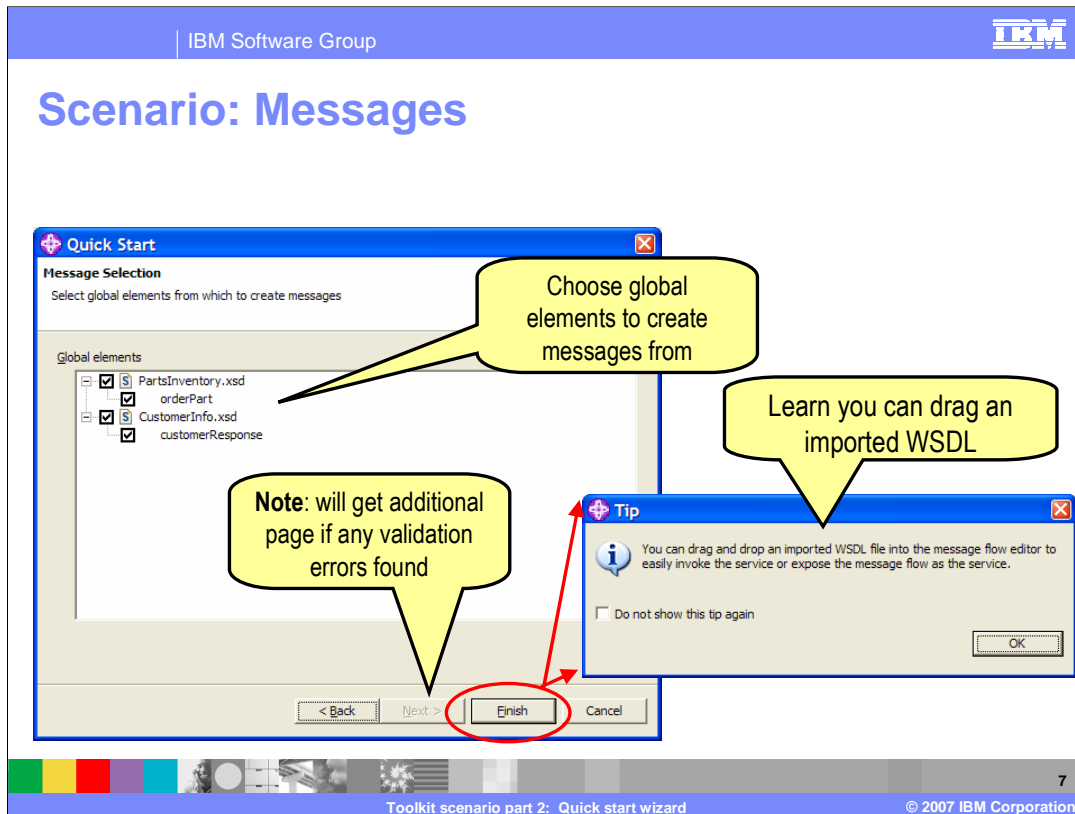


After selecting Next, you are presented with the option to choose external resources. Choose WSDL and XSD files to import directly from the file directory. Multiple files can be selected.

Scenario: Bindings



Choose bindings from which to model messages. Multiple bindings can be selected.



Choose which XSD messages to model. When there are validation errors, an additional page is displayed. You can also drag an imported WSDL into the message flow editor.

Scenario: Results

Collapse if not needed

New - generated:

1. Message flow and project
2. Message set and project
3. Working set to hold projects – *and navigator is filtered to only show projects in that working set*

Message flow editor pre-opened

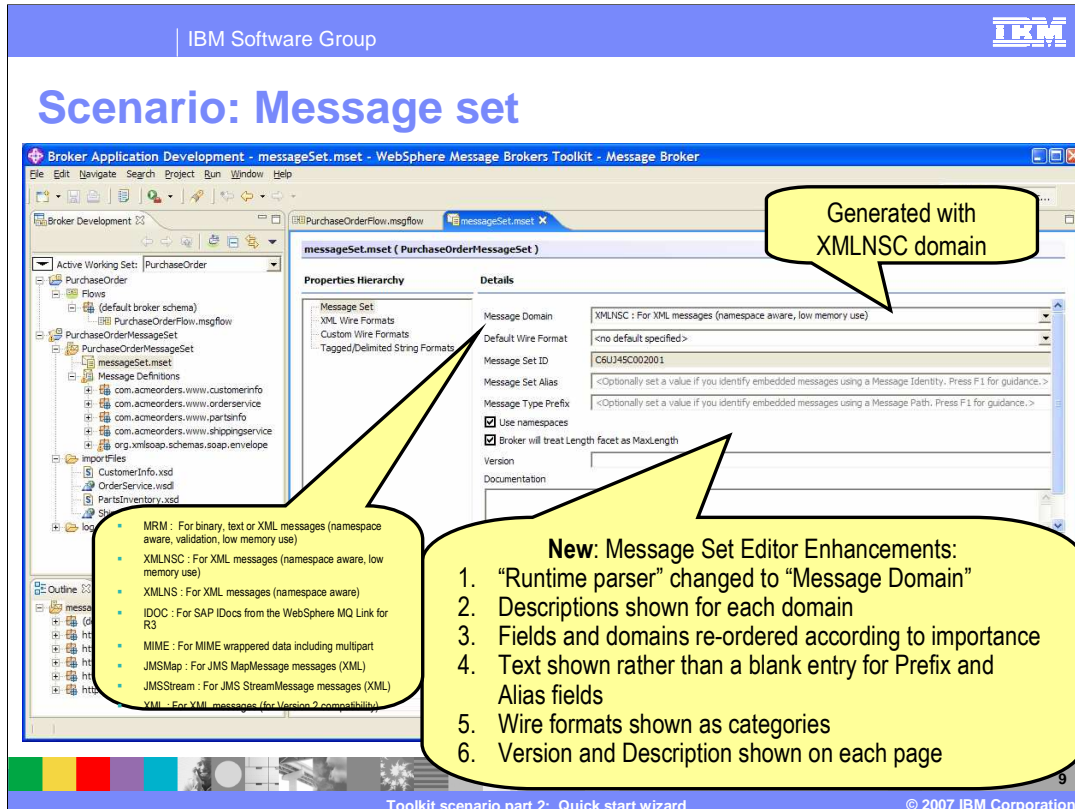
Imported files

Properties view shows info about selected file

Property	Value
Artifact	
last modified	10/7/06 11:53 AM
name	PurchaseOrderFlow
path	/PurchaseOrder/PurchaseOrderFlow.msgflow
type	Message Flow

Toolkit scenario part 2: Quick start wizard © 2007 IBM Corporation

After finishing the wizard, the navigator (on the left) will display the active working set showing the new generated message flow and project, and the new message set and project, including the files imported. The message flow editor is opened. The properties view displays information about the selected file.



This screen capture shows what is displayed when you select the message set. New Message Set Editor enhancements include:

- * "Runtime parser" is changed to "Message Domain"
- * Descriptions are shown for each domain
- * Fields and domains are re-ordered according to importance
- * Text is shown rather than a blank entry for Prefix and Alias fields

Wire formats are shown as categories

and

- * Version and Description are shown on each page

IBM Software Group IBM

Notes: Message set editor for wire formats

Properties Hierarchy

- Message Set
 - XML Wire Formats
 - XML1
 - Custom Wire Formats
 - Tagged/Delimited String Formats

XML Wire Format Details - XML1

Namespace settings

Namespace declarations	
Namespace URI	Prefix
http://schemas.xmlsoap.org/soap/envelope/	soapenv
http://www.acmeOrders.com/CustomerInfo	tns
http://www.acmeOrders.com/OrderService	tns
http://www.acmeOrders.com/PartsInfo	tns
http://www.acmeOrders.com/ShippingService	tns

Namespace schema locations	
Namespace URI	Schema location
<no target namespace >	

Output Namespace Declaration
 At start of document

- > XML declaration
- > XML document type settings
- > XML representation of boolean values
- > XML representation of null values
- > Datetime settings
- > xsi:type settings
- ▼ **Deprecated**

These properties are used to control legacy behaviour in the MRM parser and should not be changed from their default settings. They will be withdrawn in a future release.

Root Tag Name: |

Suppress Timestamp Comment
 Enable Versioning Support

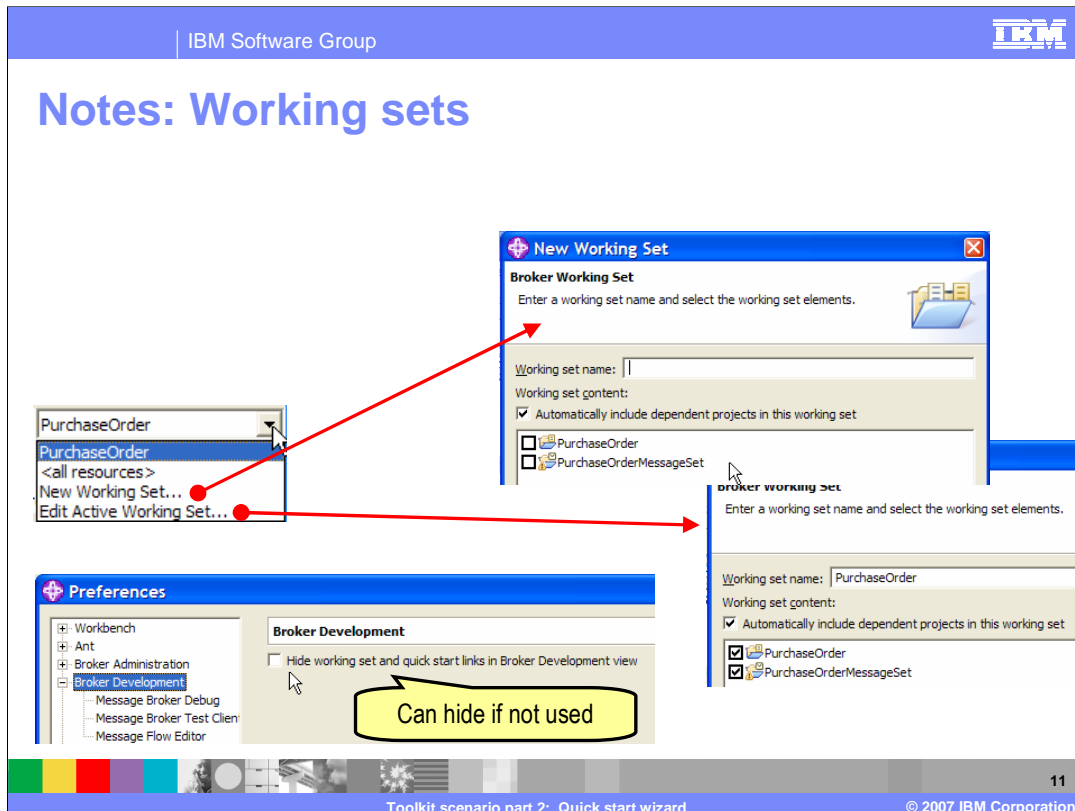
Toolkit scenario part 2: Quick start wizard © 2007 IBM Corporation

New: now partition wire format properties into collapsible sections

Slight tweaks to categorization of namespace-related properties

Collected older properties into new Deprecated section

Although not part of this scenario, this screen capture shows additional details available about wire format properties in the message set editor. These properties have been partitioned into collapsible sections. Namespace related properties have been further categorized into declarations, schema locations and output namespace declaration. Older properties have been combined into a deprecated section.



Working sets are an existing Eclipse concept, but new in the Broker Application Development Perspective in the V6.0.2 toolkit. A working set is a named group containing one or more projects. It is a way to filter the Broker Application Development view to show only projects related to a particular scope or application in the Resource Navigator. This concludes part two of the Toolkit scenario.

Feedback

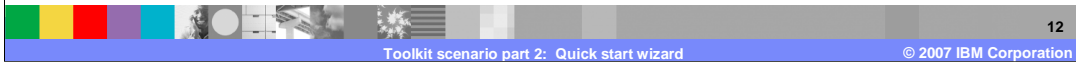
Your feedback is valuable

You can help improve the quality of IBM Education Assistant content to better meet your needs by providing feedback.

- Did you find this module useful?
- Did it help you solve a problem or answer a question?
- Do you have suggestions for improvements?

Click to send e-mail feedback:

[mailto:iea@us.ibm.com?subject= Feedback about Toolkit.Scenarios.Part2 Wizards.ppt](mailto:iea@us.ibm.com?subject=Feedback%20about%20Toolkit.Scenarios.Part2%20Wizards.ppt)



You can help improve the quality of IBM Education Assistant content by providing feedback.

Trademarks, copyrights, and disclaimers

The following terms are trademarks or registered trademarks of International Business Machines Corporation in the United States, other countries, or both:

WebSphere

Product data has been reviewed for accuracy as of the date of initial publication. Product data is subject to change without notice. This document could include technical inaccuracies or typographical errors. IBM may make improvements or changes in the products or programs described herein at any time without notice. Any statements regarding IBM's future direction and intent are subject to change or withdrawal without notice, and represent goals and objectives only. References in this document to IBM products, programs, or services does not imply that IBM intends to make such products, programs or services available in all countries in which IBM operates or does business. Any reference to an IBM Program Product in this document is not intended to state or imply that only that program product may be used. Any functionally equivalent program, that does not infringe IBM's intellectual property rights, may be used instead.

Information is provided "AS IS" without warranty of any kind. THE INFORMATION PROVIDED IN THIS DOCUMENT IS DISTRIBUTED "AS IS" WITHOUT ANY WARRANTY, EITHER EXPRESS OR IMPLIED. IBM EXPRESSLY DISCLAIMS ANY WARRANTIES OF MERCHANTABILITY, FITNESS FOR A PARTICULAR PURPOSE OR NON-INFRINGEMENT. IBM shall have no responsibility to update this information. IBM products are warranted, if at all, according to the terms and conditions of the agreements (for example, IBM Customer Agreement, Statement of Limited Warranty, International Program License Agreement, etc.) under which they are provided. Information concerning non-IBM products was obtained from the suppliers of those products, their published announcements or other publicly available sources. IBM has not tested those products in connection with this publication and cannot confirm the accuracy of performance, compatibility or any other claims related to non-IBM products.

IBM makes no representations or warranties, express or implied, regarding non-IBM products and services.

The provision of the information contained herein is not intended to, and does not, grant any right or license under any IBM patents or copyrights. Inquiries regarding patent or copyright licenses should be made, in writing, to:

IBM Director of Licensing
IBM Corporation
North Castle Drive
Armonk, NY 10504-1785
U.S.A.

Performance is based on measurements and projections using standard IBM benchmarks in a controlled environment. All customer examples described are presented as illustrations of how those customers have used IBM products and the results they may have achieved. The actual throughput or performance that any user will experience will vary depending upon considerations such as the amount of multiprogramming in the user's job stream, the I/O configuration, the storage configuration, and the workload processed. Therefore, no assurance can be given that an individual user will achieve throughput or performance improvements equivalent to the ratios stated here.

© Copyright International Business Machines Corporation 2007. All rights reserved.

Note to U.S. Government Users - Documentation related to restricted rights-Use, duplication or disclosure is subject to restrictions set forth in GSA ADP Schedule Contract and IBM Corp.

