



IBM Software Group

WebSphere® Message Broker Toolkit V6.0.2

Enhancements part 1: Basics and wizards



@business on demand.

© 2007 IBM Corporation
Updated May 29, 2007

This module is the first of five presenting the enhancements made to WebSphere Message Broker Toolkit V6.0.2.

Agenda

- Toolkit basics
- Broker application development
 - ▶ Quick start wizards

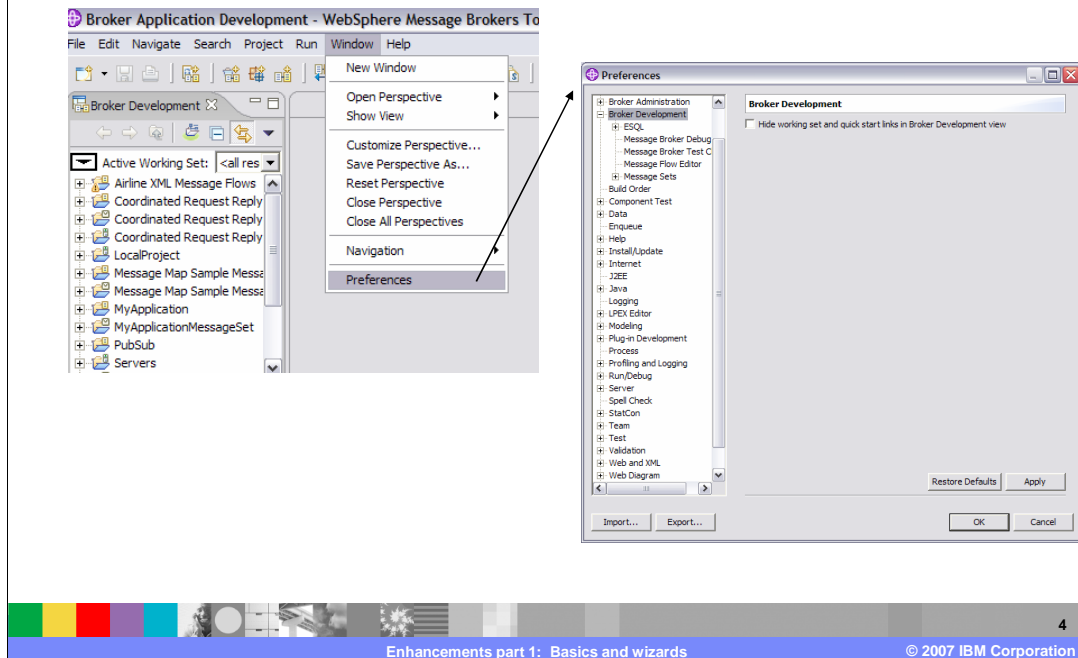
This presentation covers changes to the toolkit basics and quick start wizards available in the Broker Application Development Perspective.

Section

Toolkit basics

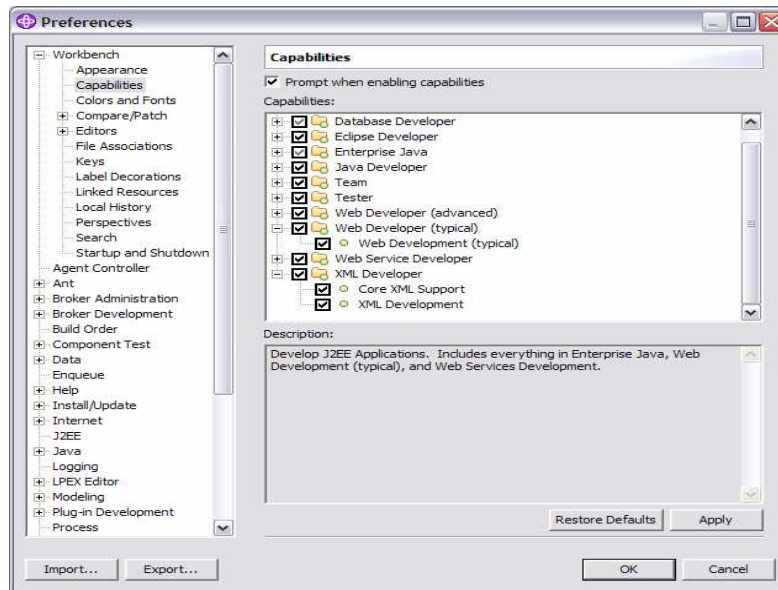
First, general enhancements.

Toolkit preferences



Select Window > Preferences to customize your environment. Note that there are preferences for broker administration, many development categories, and the workbench itself.

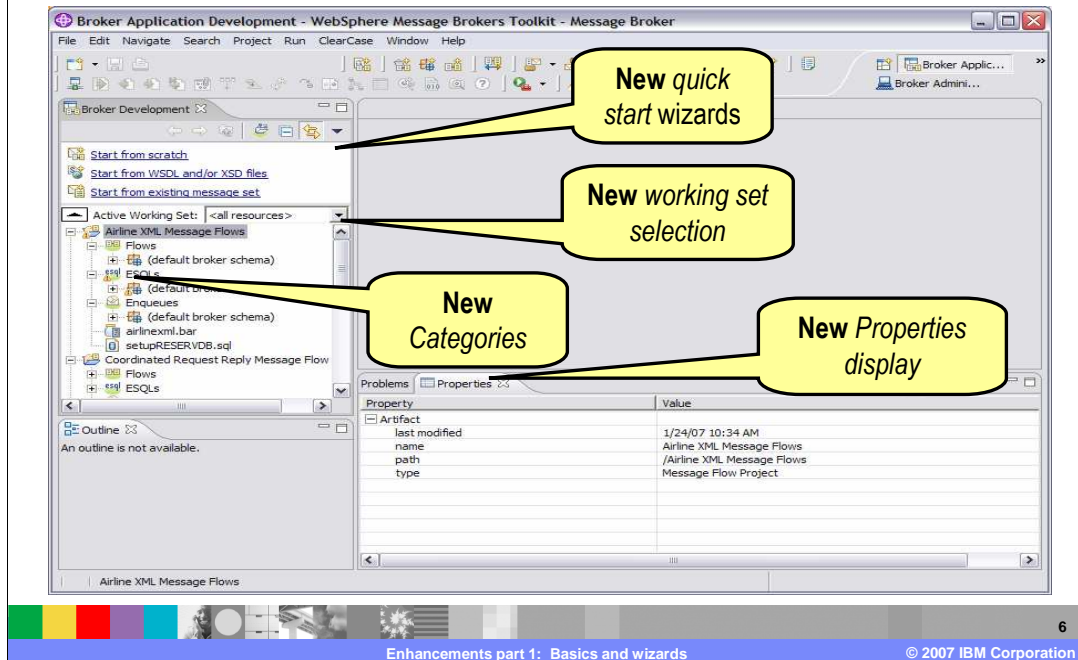
Workbench preferences



5

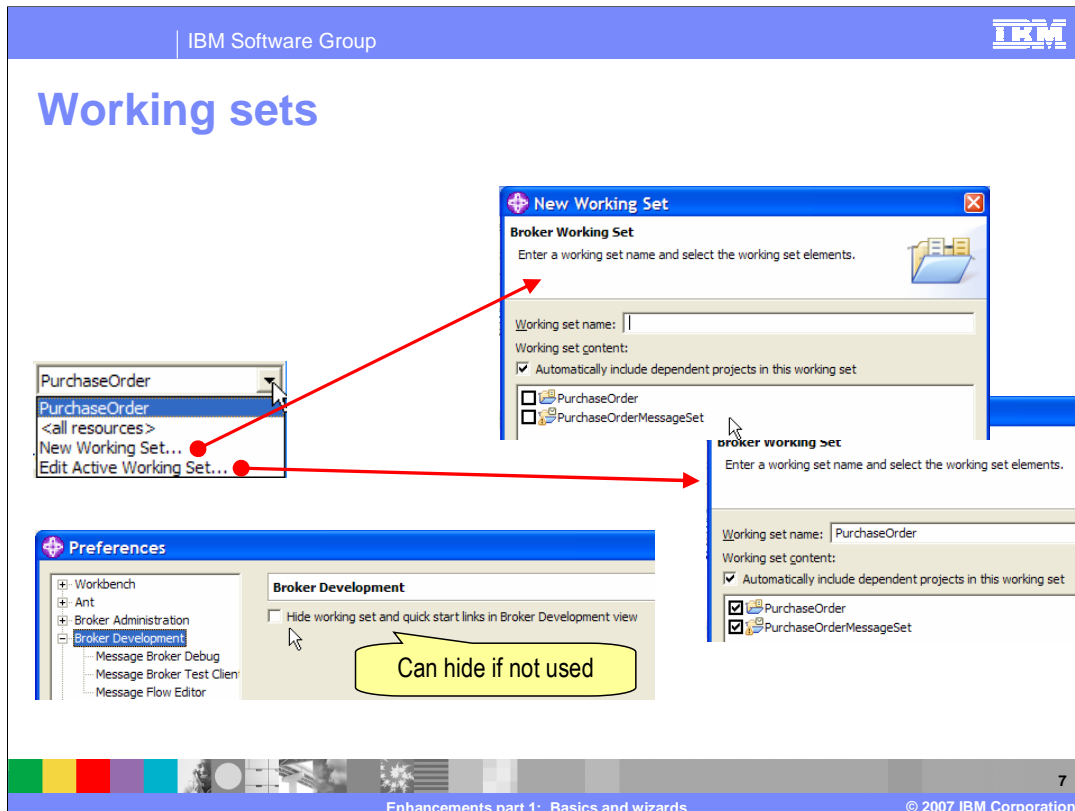
Preferences for Workbench Capabilities includes many options including the Web Developer and XML Developer capabilities. Selecting these will cause the WSDL editor to be invoked when you double click on a WSDL file; these settings are the default when first installed.

Broker application development perspective



In the Broker Application Development Perspective, the Broker Development view in V6.0.2 includes quick start wizards. There is the capability to show all resources or only the current working set. The resources are divided into categories.

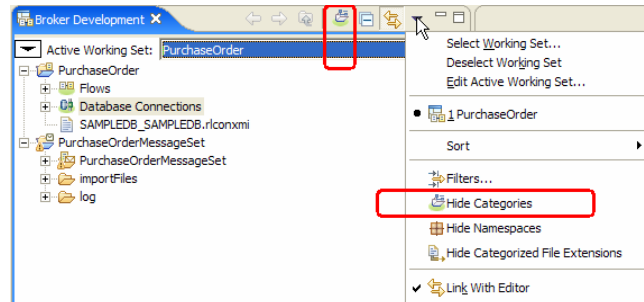
There is now a Properties panel in the lower right, showing properties for the selected resource.



Working sets are an existing Eclipse concept, but new in the Broker Application Development Perspective in the V6.0.2 toolkit. A working set is a named group containing one or more projects. It is a way to filter Broker Application Development view to show only projects related to particular scope or application in the Resource Navigator.

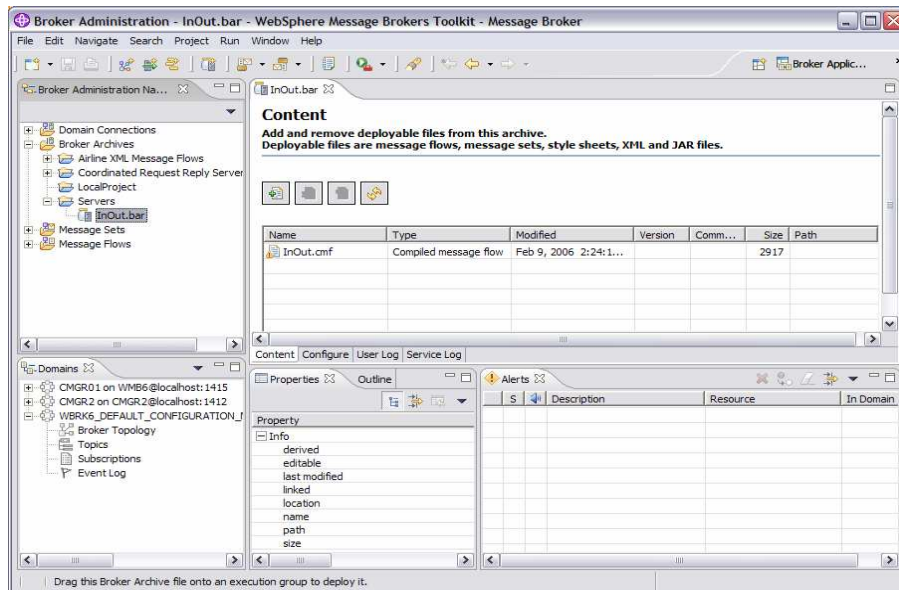
Categories

- In V602 categories are shown in the navigator
 - ▶ Message Set projects:
 - Message Definitions
 - Message Categories
 - ▶ Message Flow projects:
 - Flows
 - Maps
 - ESQs
 - Database Connections
 - Enqueues
- This may be hidden
- Can also hide
 - ▶ Namespaces
 - ▶ Broker schemas
 - ▶ File extensions



In WebSphere Message Broker Toolkit V6.0.2 the navigator pane shows various categories of your working set. This may be turned off as shown in the screen capture on this slide. Note that there are other options you may use to customize your navigator display.

Broker Administration Perspective



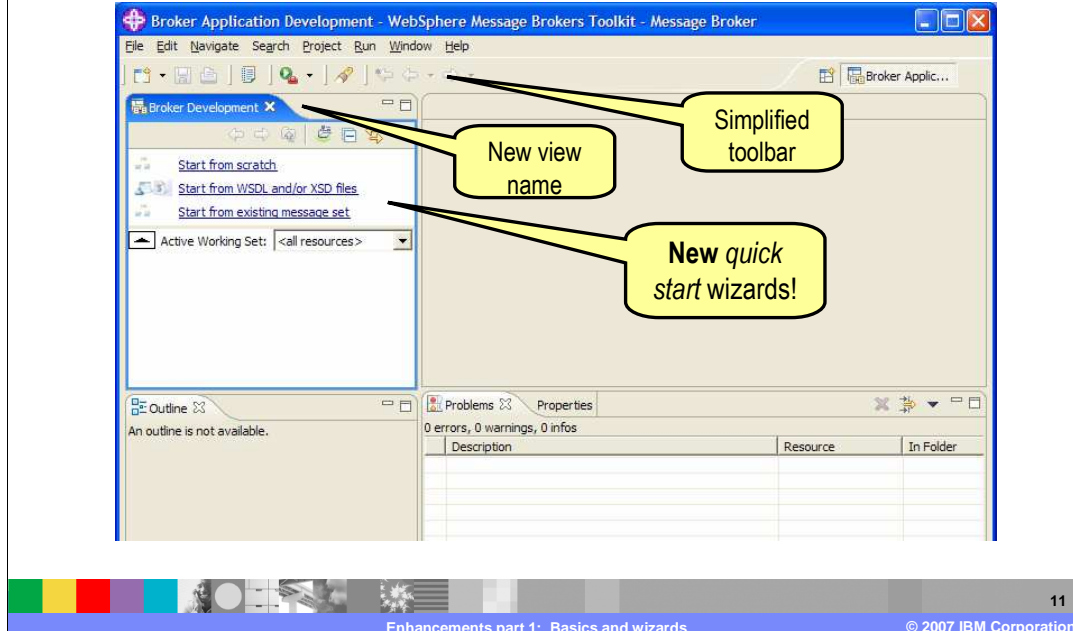
Here is the V6.0.2 workbench layout in the Broker Administration Perspective showing the Broker Administration navigator on the left. .

Section

Quick start wizards

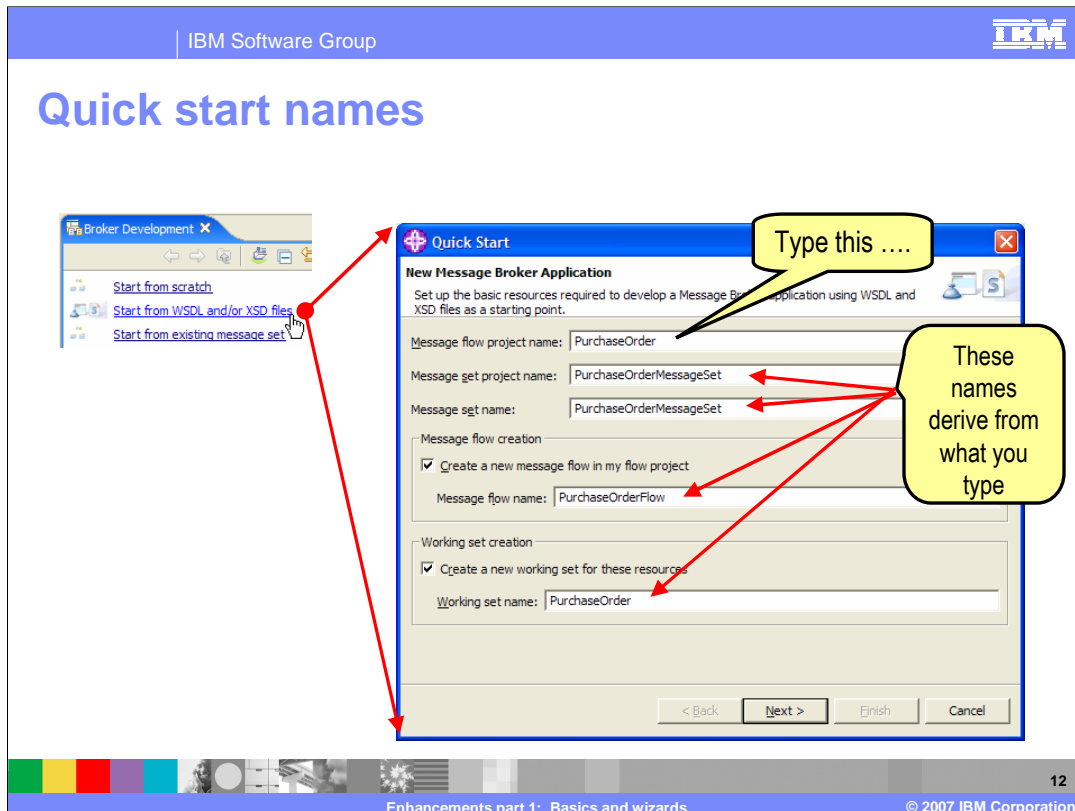
This section discusses the new quick start wizards available in the Broker Application Development perspective.

Quick start wizards



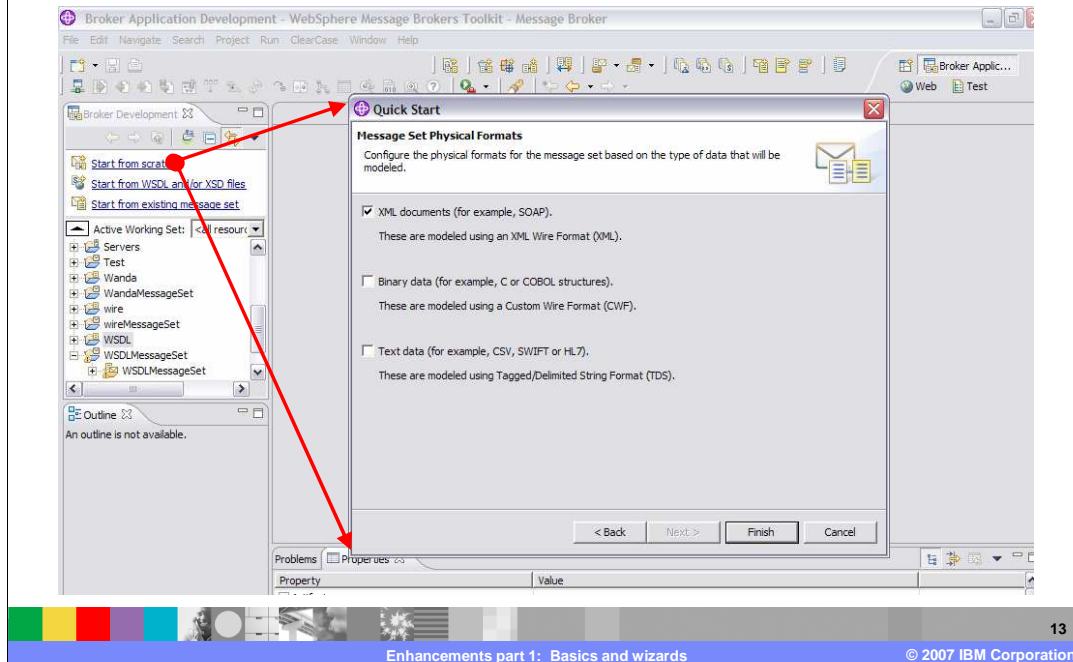
The first time that you start the Message Brokers Toolkit, the Broker Application Development perspective is displayed. When in the Application Development perspective, there are new quick start wizards:

- Start from scratch
- Start from WSDL and XSD files
- Start from existing message set



The quick start wizard provides a place to enter your message flow project name. When you enter the root name for your new application, the remaining names are derived. You may use the defaults or change these names.

Start from scratch



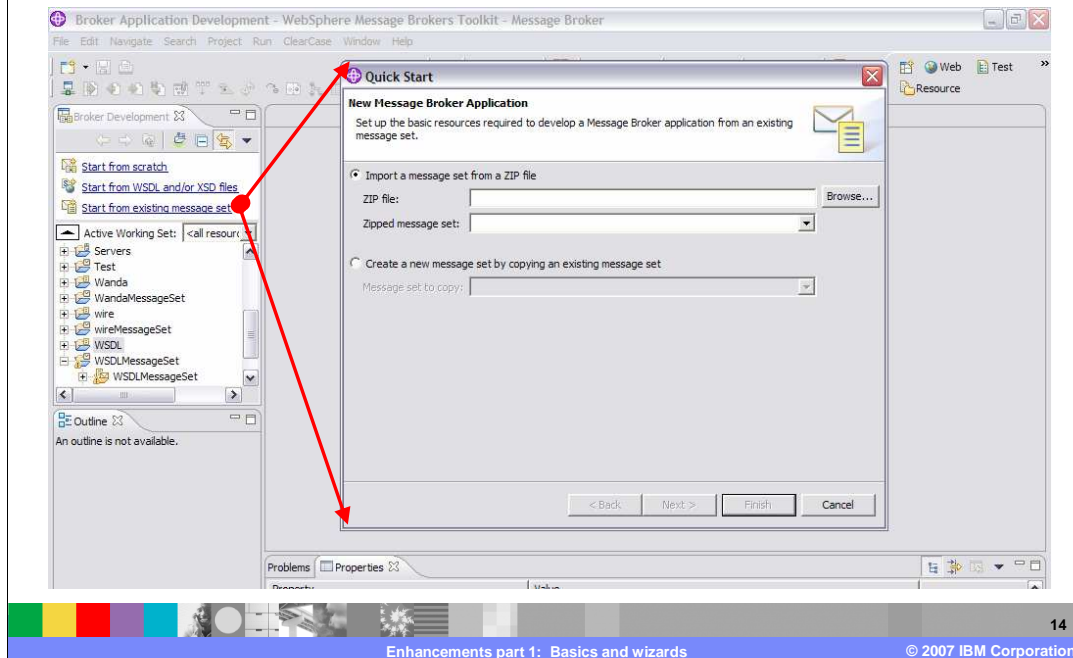
When starting from scratch configure the physical formats for the message set based on the type of data that will be modeled:

XML documents (for example, SOAP) modeled using XML Wire Format

Binary data (for example, C or COBOL structures) modeled using Custom Wire Format

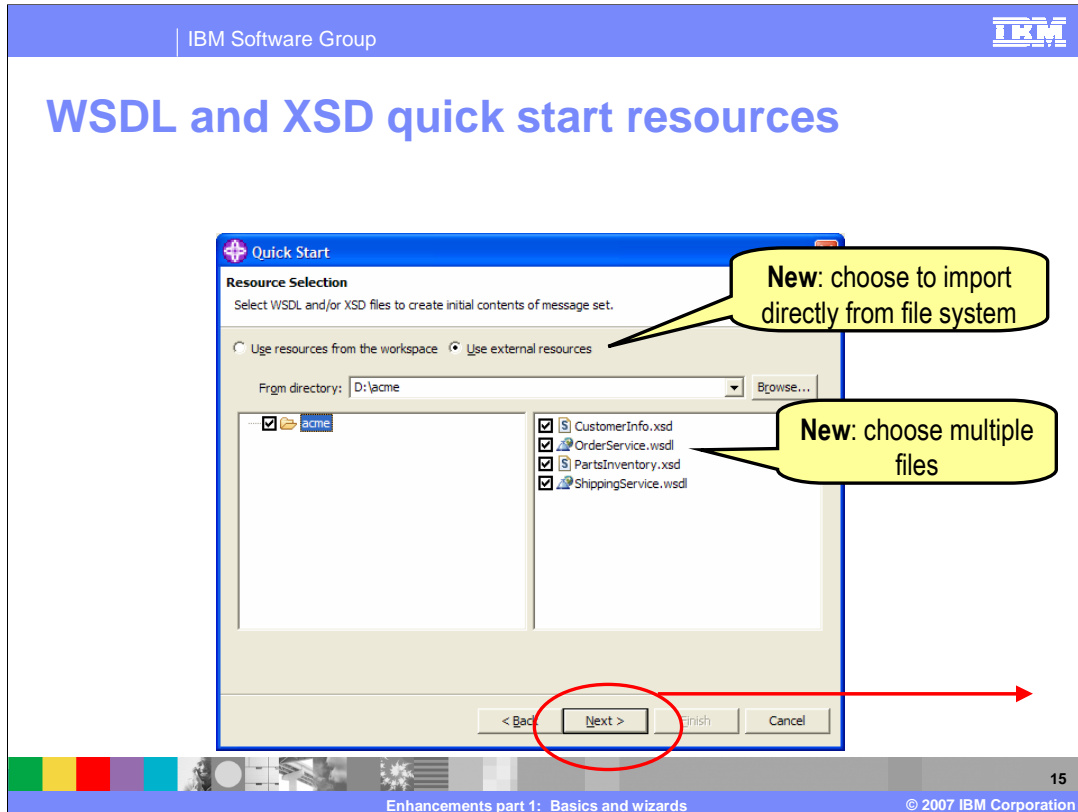
Text data (for example, CSV, SWIFT or HL7) modeled using Tagged/Delimited String Format

Start from existing message set



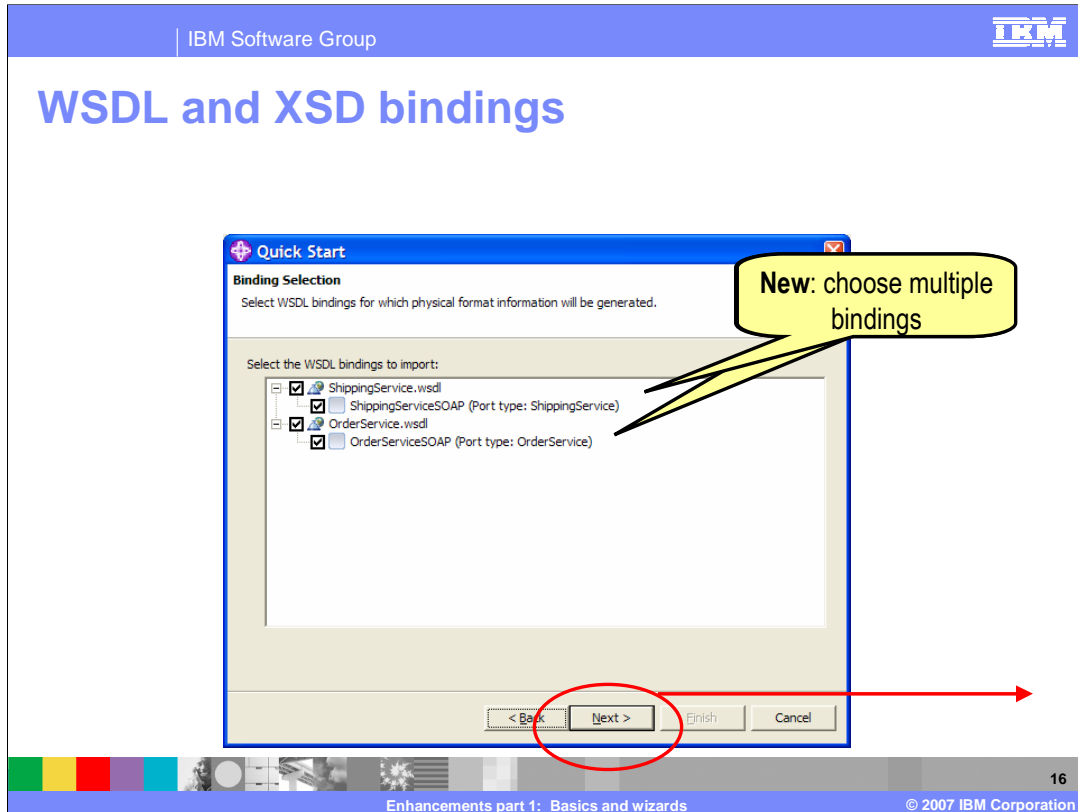
When starting from an existing message set you can import from a ZIP file or copy an existing message set from your environment.

WSDL and XSD quick start resources

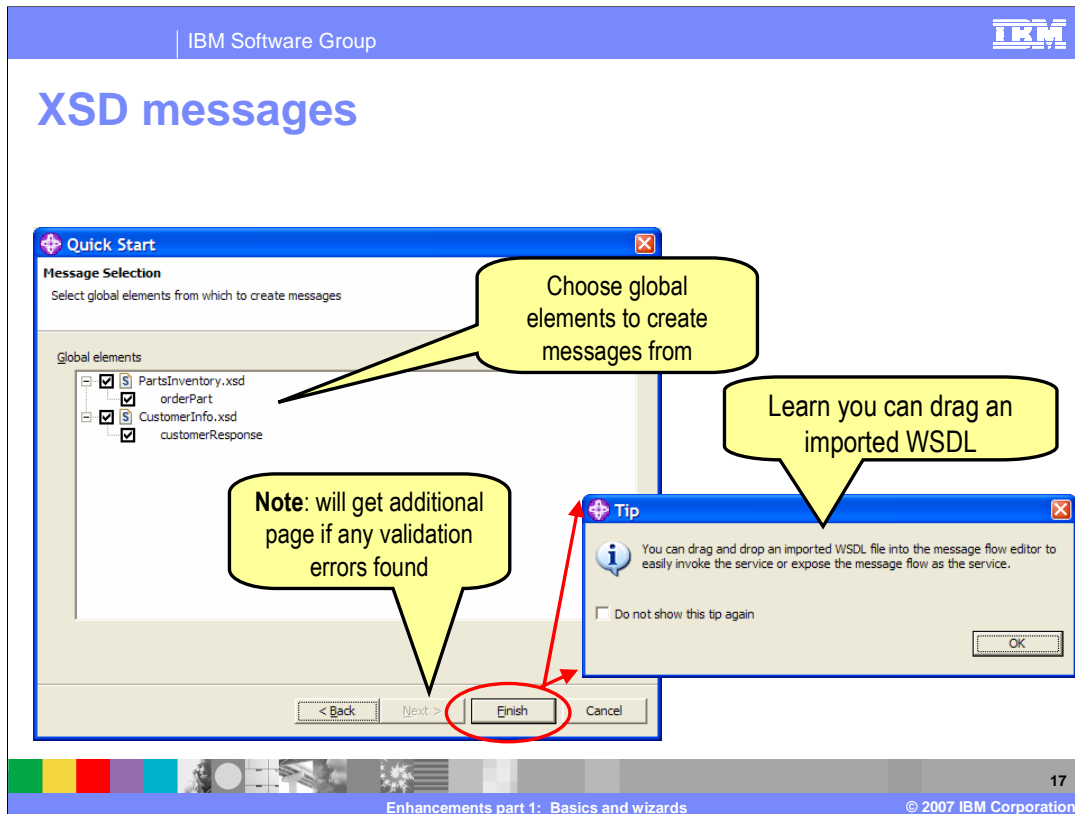


When using the WSDL and XSD quick start, you can select resources from the workspace or choose the WSDL and XSD files to import directly from the file directory; multiple files can be selected.

WSDL and XSD bindings



And you choose bindings from which to model messages. Multiple bindings may be selected.



Choose which XSD messages to model. If there are validation errors, an additional page will be displayed. Note that you can also drag an imported WSDL file into the message flow editor.

Quick wizard results

Collapse if not needed

New - generated:

1. Message flow and project
2. Message set and project
3. Working set to hold projects – *and navigator is filtered to only show projects in that working set*

Message flow editor pre-opened

Imported files

Properties view shows info about selected file

Property	Value
Artifact	
last modified	10/7/06 11:53 AM
name	PurchaseOrderFlow
path	/PurchaseOrder/PurchaseOrderFlow.msgflow
type	Message Flow

Enhancements part 1: Basics and wizards © 2007 IBM Corporation

After completion of a Quick start wizard, your toolkit screen will display the active working set showing the new generated message flow and project, and the new message set and project including the files imported. The message flow editor is opened. The properties view displays information about the selected file.

Feedback

Your feedback is valuable

You can help improve the quality of IBM Education Assistant content to better meet your needs by providing feedback.

- Did you find this module useful?
- Did it help you solve a problem or answer a question?
- Do you have suggestions for improvements?

Click to send e-mail feedback:

[mailto:iea@us.ibm.com?subject= Feedback about Toolkit1.Basics and wizards.ppt](mailto:iea@us.ibm.com?subject=Feedback%20about%20Toolkit1.Basics%20and%20wizards.ppt)



You can help improve the quality of IBM Education Assistant content by providing feedback.

Trademarks, copyrights, and disclaimers

The following terms are trademarks or registered trademarks of International Business Machines Corporation in the United States, other countries, or both:

IBM WebSphere

Product data has been reviewed for accuracy as of the date of initial publication. Product data is subject to change without notice. This document could include technical inaccuracies or typographical errors. IBM may make improvements or changes in the products or programs described herein at any time without notice. Any statements regarding IBM's future direction and intent are subject to change or withdrawal without notice, and represent goals and objectives only. References in this document to IBM products, programs, or services does not imply that IBM intends to make such products, programs or services available in all countries in which IBM operates or does business. Any reference to an IBM Program Product in this document is not intended to state or imply that only that program product may be used. Any functionally equivalent program, that does not infringe IBM's intellectual property rights, may be used instead.

Information is provided "AS IS" without warranty of any kind. THE INFORMATION PROVIDED IN THIS DOCUMENT IS DISTRIBUTED "AS IS" WITHOUT ANY WARRANTY, EITHER EXPRESS OR IMPLIED. IBM EXPRESSLY DISCLAIMS ANY WARRANTIES OF MERCHANTABILITY, FITNESS FOR A PARTICULAR PURPOSE OR NONINFRINGEMENT. IBM shall have no responsibility to update this information. IBM products are warranted, if at all, according to the terms and conditions of the agreements (for example, IBM Customer Agreement, Statement of Limited Warranty, International Program License Agreement, etc.) under which they are provided. Information concerning non-IBM products was obtained from the suppliers of those products, their published announcements or other publicly available sources. IBM has not tested those products in connection with this publication and cannot confirm the accuracy of performance, compatibility or any other claims related to non-IBM products.

IBM makes no representations or warranties, express or implied, regarding non-IBM products and services.

The provision of the information contained herein is not intended to, and does not, grant any right or license under any IBM patents or copyrights. Inquiries regarding patent or copyright licenses should be made, in writing, to:

IBM Director of Licensing
IBM Corporation
North Castle Drive
Armonk, NY 10504-1785
U.S.A.

Performance is based on measurements and projections using standard IBM benchmarks in a controlled environment. All customer examples described are presented as illustrations of how those customers have used IBM products and the results they may have achieved. The actual throughput or performance that any user will experience will vary depending upon considerations such as the amount of multiprogramming in the user's job stream, the I/O configuration, the storage configuration, and the workload processed. Therefore, no assurance can be given that an individual user will achieve throughput or performance improvements equivalent to the ratios stated here.

© Copyright International Business Machines Corporation 2007. All rights reserved.

Note to U.S. Government Users - Documentation related to restricted rights-Use, duplication or disclosure is subject to restrictions set forth in GSA ADP Schedule Contract and IBM Corp.

