



IBM Software Group

## WebSphere® Message Broker Toolkit V6.0.2

### *Enhancements part 3: WSDL and SOAP*



@business on demand.

© 2007 IBM Corporation  
Updated May 30, 2007

This module is the third of five presenting the enhancements made to WebSphere Message Broker Toolkit V6.0.2.

## Agenda

- Broker application development
  - ▶ WSDL and SOAP
  - ▶ Message flows

This presentation covers enhancements to WSDL and SOAP handling and using message flows in the Broker Application Development Perspective.

## Section

# ***WSDL and SOAP***

There are enhancements to the broker development tools involving WSDL and SOAP.

## The new SOAP nodes

### SOAPEExtract and SOAPEEnvelope nodes

- ▶ available on the Web as a category 3 SupportPac™ IA90
- ▶ See

<http://www-1.ibm.com/support/docview.wss?rs=171&uid=swg27007197>

**IA90: WebSphere Message Broker – SOAPEEnvelope and SOAPEExtract nodes**

---

**Downloadable files**

---

**Abstract**  
This SupportPac includes two new nodes, the SOAPEExtract node and the SOAPEEnvelope node. They can be used to simplify the processing of SOAP messages in WebSphere Message Broker

**Download Description**  
The SOAPEExtract node removes the envelope from a SOAP message and places it in a configurable location. The SOAP body becomes the body of the message. The SOAPEEnvelope node reconstructs a SOAP message using the previously stored SOAP envelope.

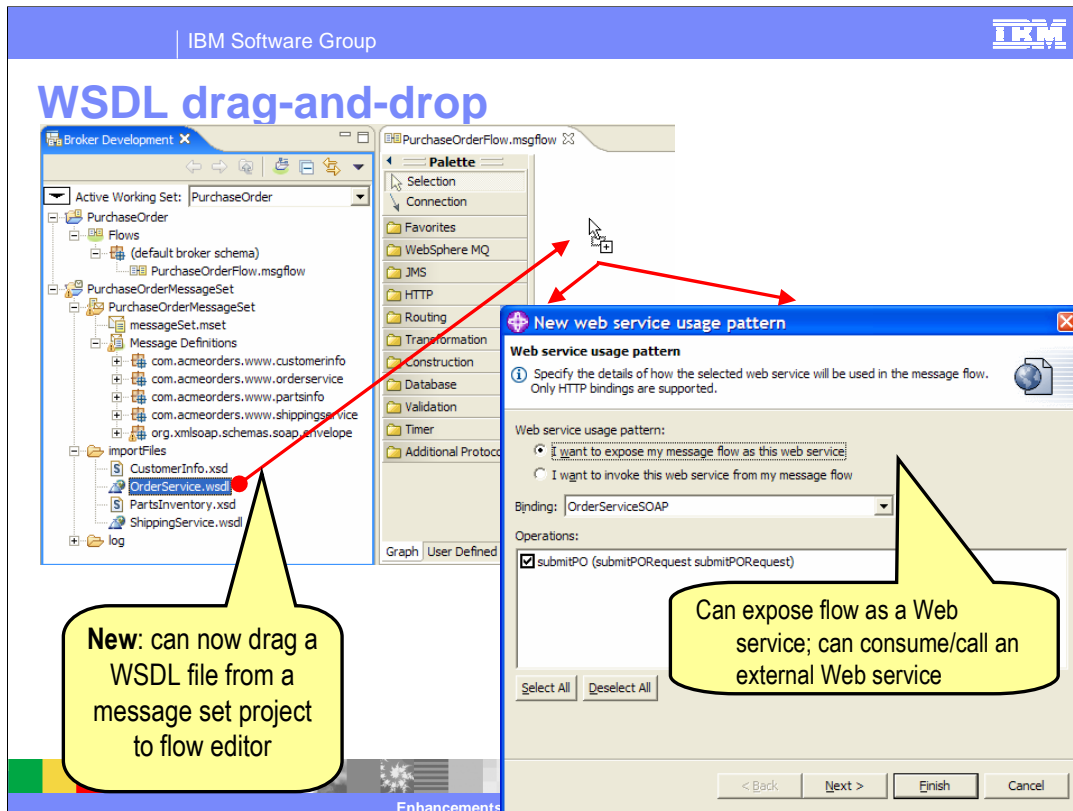
**POSSIBLE USES**  
It is intended that these nodes are used as a pair to simplify the processing of SOAP messages within a message flow. The SOAPEExtract node is used after an input node to split the body from the envelope. The SOAPEEnvelope node is used before an output terminal to reconstruct a SOAP message.

4

SupportPac IA90 includes two new nodes, the SOAPEExtract node and the SOAPEEnvelope node. They can be used to simplify the processing of SOAP messages in WebSphere Message Broker.

The SOAPEExtract node removes the envelope from a SOAP message and places it in a configurable location. The SOAP body becomes the body of the message. The SOAPEEnvelope node reconstructs a SOAP message using the previously stored SOAP envelope.

It is intended that these nodes are used as a pair to simplify the processing of SOAP messages within a message flow. The SOAPEExtract node is used after an input node to split the body from the envelope. The SOAPEEnvelope node is used before an output terminal to reconstruct a SOAP message.



When you drag an imported WSDL file to the Message flow editor, you get a New Web service usage pattern which will define the Web service in this flow. Shown here is exposing the Web service in a flow as a request expecting a response.

IBM Software Group IBM

## Generated message flow

**Generated sub-flow: one terminal per WSDL operation (selected in wizard)**

**Generates nodes to take SOAP message, extract body part of it, and establish which operation was invoked**

**Generates nodes to return a SOAP reply ... one pair (new SOAPEnvelope node and HTTPReply node) per operation with response.**

**HTTP Input Node Properties - ws\_OrderService**

Description	HTTP Input Node Properties - ws_OrderService	
Basic		
Input Message Parsing	Message domain	XMLNSC
Parser Options	Message set	
Error Handling	Message type	
Validation	Message format	

6

Enhancements part 3: WSDL and SOAP © 2007 IBM Corporation

After the WSDL drag-and-drop, the message flow, as seen in this screen print, is been generated. There are nodes to take the SOAP message, HTTPInput node, and a sub-flow to extract and process the message. There are nodes to return the SOAP reply: a SOAPEnvelope node and a HTTPReply node.

IBM Software Group IBM

## Generated sub-flow

The screenshot displays the IBM WebSphere Message Brokers Toolkit interface. The main window shows a message flow graph for 'OrderService\_Gen\_Front\_Subflow.msgflow'. The flow starts with an 'in' node, followed by a 'ws\_DeEnvelop\_wsdOper' node (a SOAPDeEnveloper), which then connects to a 'failure' node. A second path branches from the 'ws\_DeEnvelop\_wsdOper' node to a 'ws\_submitPORrequest' node, which then connects to a 'submitPORrequest' node. The left pane shows a project tree with 'PurchaseOrder' and 'OrderService\_Gen\_Front\_Subflow' highlighted. The bottom pane shows the 'SOAPDeEnveloper Node Properties' dialog with fields for 'Node name', 'Short description', and 'Long description'. Three yellow callout boxes provide the following information:

- Generates a sub-flow to extract body from SOAP envelope** (pointing to the SOAPDeEnveloper node)
- New SOAPExtract node. Extracts body from SOAP envelope and routes to Label for each operation** (pointing to the SOAPDeEnveloper node)
- One Output node per WSDL operation (selected in wizard)** (pointing to the submitPORrequest node)

The generated sub-flow has the SOAPExtract node to process the message and Label and Output nodes to route the message.

## Section

# ***Message flows***

This section discusses the enhancements made to message flow development.



## Drag-and-drop support

- In **602**, you can now drag the following onto the flow editor:
  - WSDL files from message sets
  - XSLT files to create and configure XMLTransformation nodes
  - Java™ classes to create JavaCompute node and configure its class name property
  - ESQL modules to create Compute node and configure its ESQL module name property
  - Sub-flows



WebSphere Message Broker Toolkit V6.0.2 supports drag-and-drop to the message flow editor for:

WSDL  
XSLT  
Java classes  
ESQL  
Sub-flows.

## Node Palette

The screenshot displays the Node Palette in IBM Business Process Manager V6.0.2. The palette is organized into categories: Selection, Connection, Favorites, WebSphere MQ, JMS, HTTP, Routing, Filter, Label, RouteToLabel, Publication, AggregateControl, AggregateReply, AggregateRequest, Transformation, Construction, Database, Validation, Timer, and Additional Protocols. The 'Routing' category is selected, and a tooltip for the 'Filter' node is visible, stating: "Filter node routes a message according to message content. You define the route by coding a filter expression in ESQL. See also JavaCompute node". Two yellow callout boxes highlight these changes: "New: categories for the palette!" and "New: tooltip text for the nodes. Also a Details view". The main workspace shows a message flow diagram with nodes: ws\_\_OrderService, ws\_\_OrderService\_DeEnvelopeMsgBody, ws\_\_OrderService\_EnvelopeMsgRespBody, and ws\_\_OrderService\_Reply. The bottom status bar indicates "Enhancements part 3: WSDL and SOAP" and "© 2007 IBM Corporation".

The Node Palette in V6.0.2 has been organized into node categories. There is also a text box associated with each node which briefly explains the usage of that node.

IBM Software Group IBM

## Nodes

can now edit the name in place

new: can now double click to open editor

new: properties view versus modal dialogs

ws\_\_OrderService\_EnvelopeMsgRespBodyws\_\_OrderService\_Reply

Graph User Defined Properties

Problems Properties

Description

Basic

Filter Node Properties - CheckInventory

Data source: SAMPLEDB

Transaction: Automatic

Filter expression: PurchaseOrderFlow\_checkInventoryStatus

Treat warnings as errors:

Throw exception on database error:

11

Enhancements part 3: WSDL and SOAP © 2007 IBM Corporation

The name of a node can be edited in place; a double click on the node will open the appropriate editor. There is a new properties view for node which replaces the modal dialogs.

IBM Software Group IBM

## Properties view

**new: modeless property view in 602**

versus

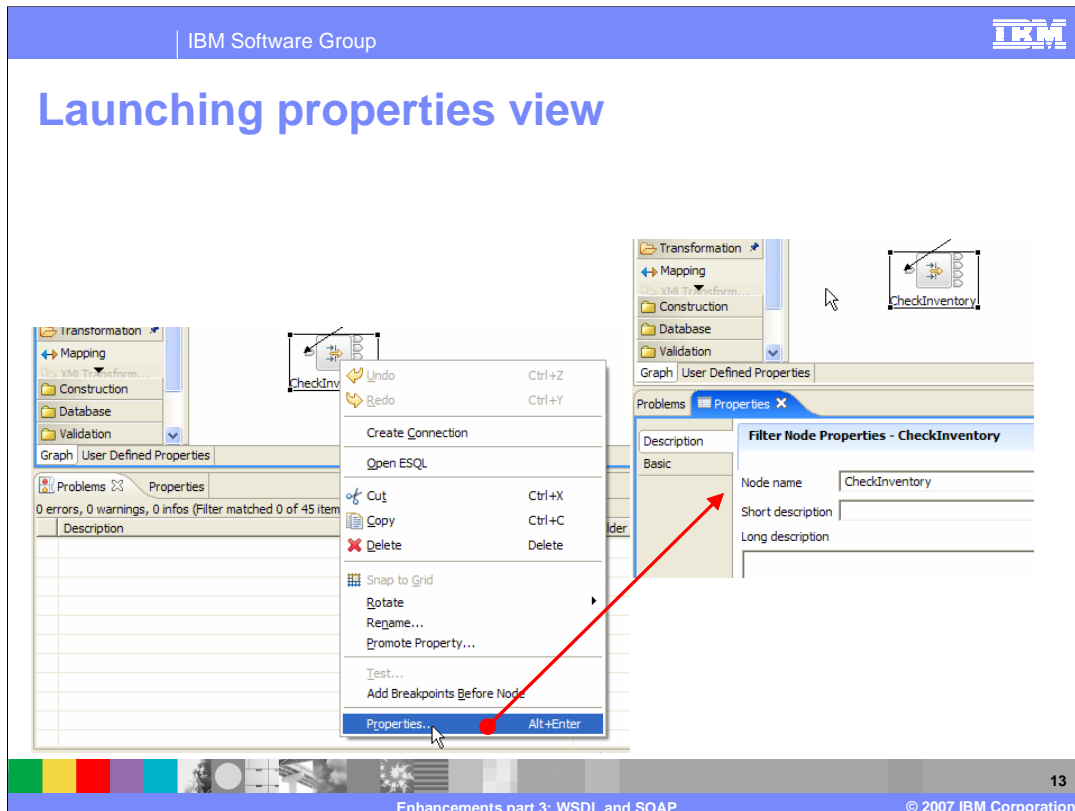
**Modal property dialog pre-602**

12

Enhancements part 3: WSDL and SOAP

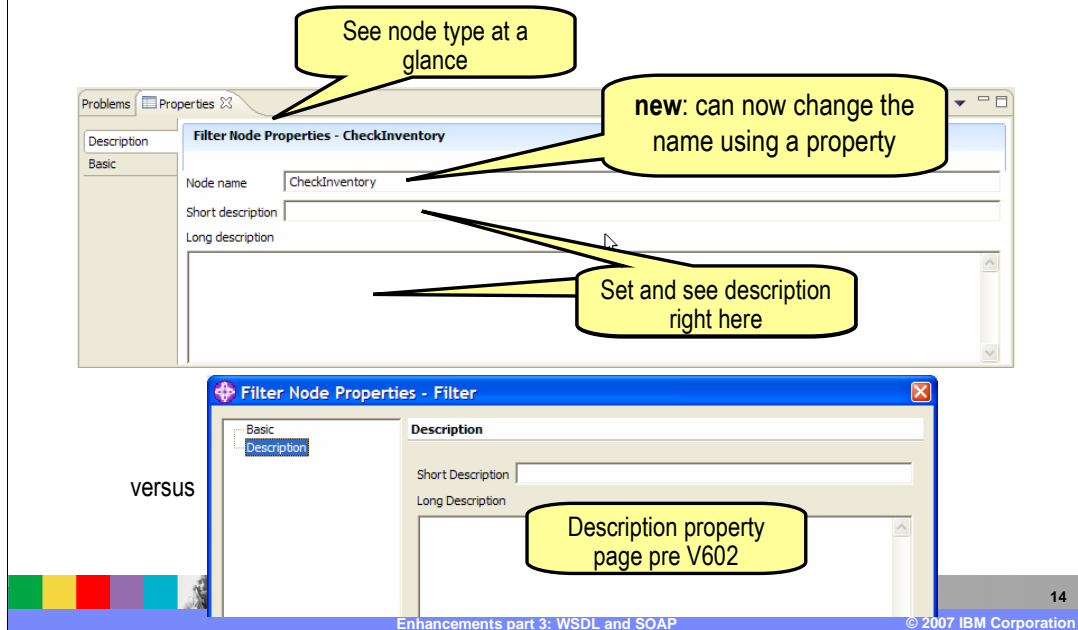
© 2007 IBM Corporation

In WebSphere Message Broker Toolkit V6.0.2, the Property view for a node, by default, is displayed below the Message flow editor. In V6.0.0 the property categories for a node are displayed by selecting Properties from a menu produced by a right-click of the node.



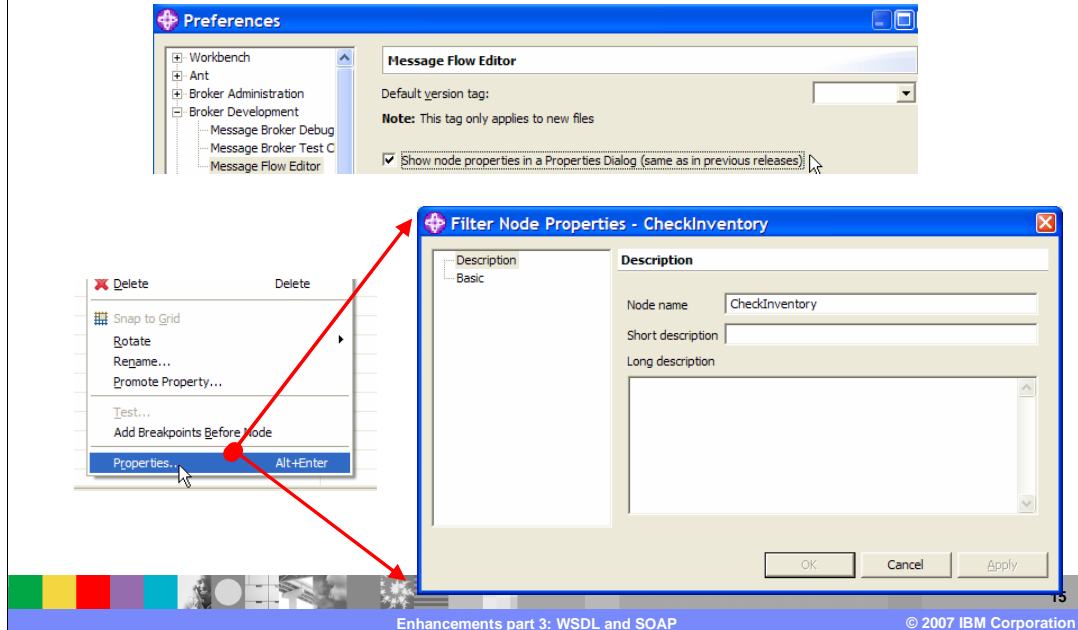
In V6.0.2 using the right-click of the node and selecting Properties action just gives Properties view focus

## Description property tab

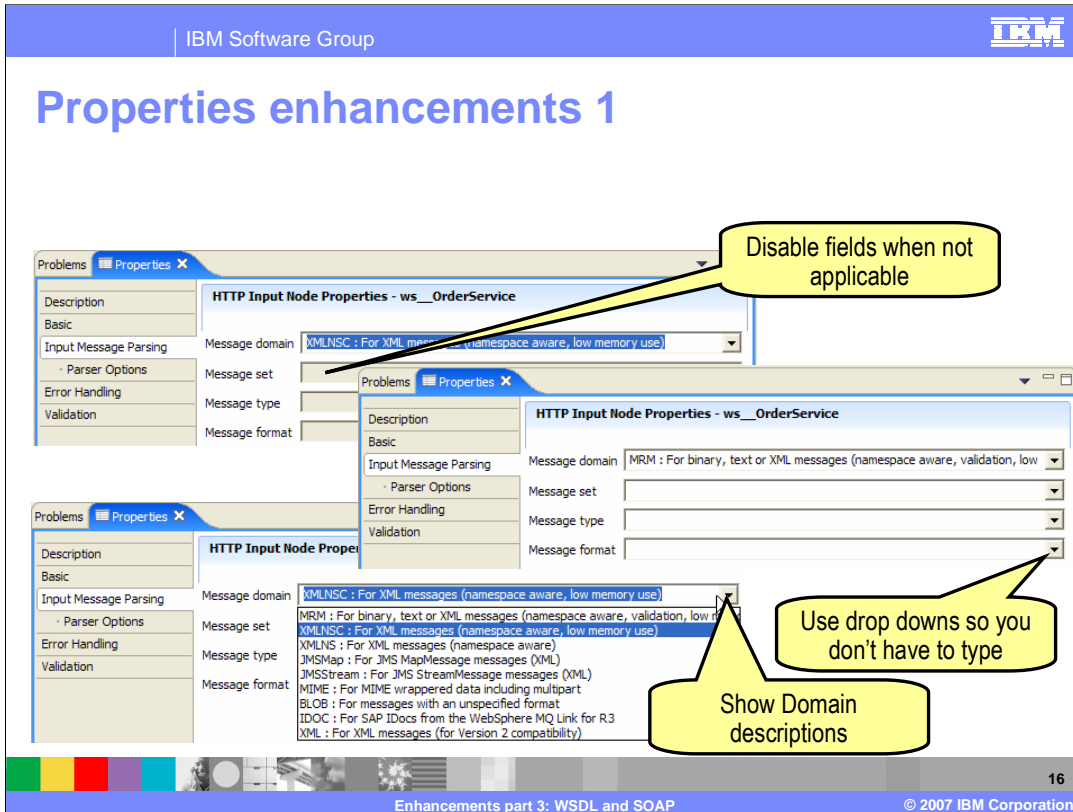


The node type is displayed at the top of the Properties view. The name of a node can be changed in the Description property tab.

## Restoring properties dialog



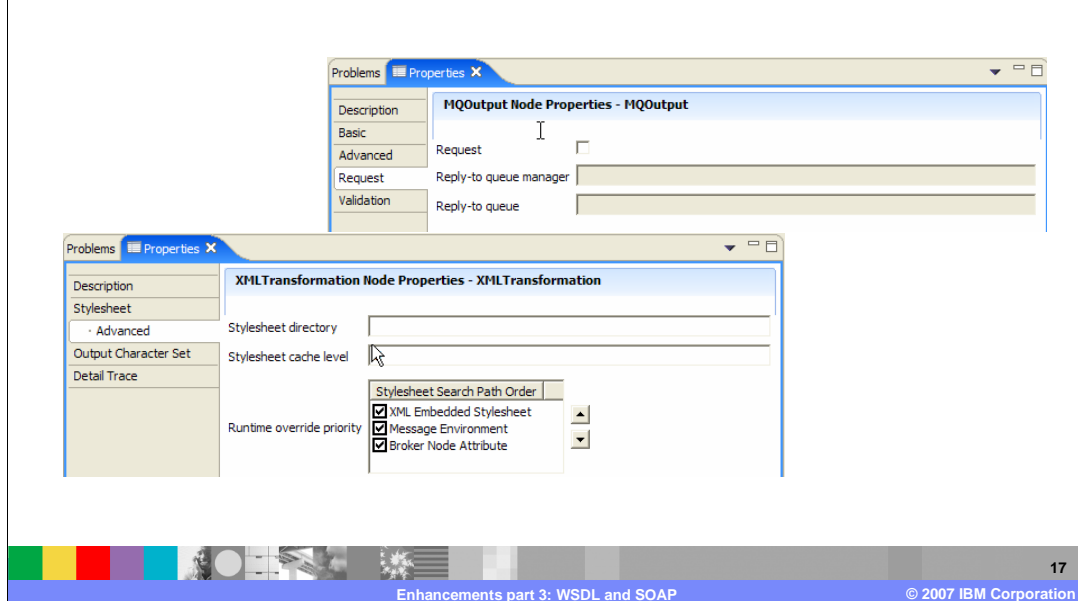
In toolkit preferences, you can change default behavior to launch the Properties dialog if you prefer.



Ease-of-use enhancements have been made to some properties. The “Default” tab has been renamed to “Input Message Parsing” on input nodes. Drop downs are available for selection in the parsing properties; fields that are not applicable to the selected domain are disabled.



## Properties enhancements 2



Properties for the following nodes have been re-organized and improved:

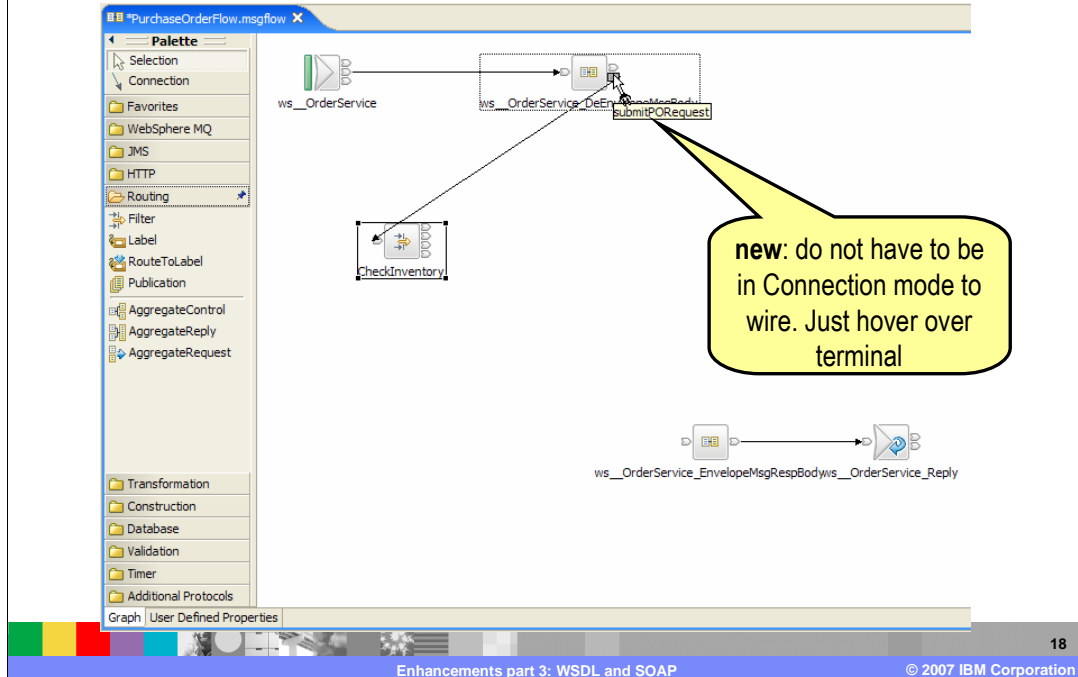
HTTPInput

HTTPRequest

JMSOutput

XMLTransformation

## Connecting nodes



In V6.0.2 you do not have to be in Connection mode to wire nodes; just hover over the terminal and left click.

## Feedback

### Your feedback is valuable

You can help improve the quality of IBM Education Assistant content to better meet your needs by providing feedback.

- Did you find this module useful?
- Did it help you solve a problem or answer a question?
- Do you have suggestions for improvements?

Click to send e-mail feedback:

[mailto:iea@us.ibm.com?subject= Feedback about Toolkit3.WSDL.SOAP.message flows.ppt](mailto:iea@us.ibm.com?subject=Feedback%20about%20Toolkit3.WSDL.SOAP.message%20flows.ppt)



You can help improve the quality of IBM Education Assistant content by providing feedback.

## Trademarks, copyrights, and disclaimers

The following terms are trademarks or registered trademarks of International Business Machines Corporation in the United States, other countries, or both:

IBM      SupportPac      WebSphere

Java, and all Java-based trademarks are trademarks of Sun Microsystems, Inc. in the United States, other countries, or both.

Product data has been reviewed for accuracy as of the date of initial publication. Product data is subject to change without notice. This document could include technical inaccuracies or typographical errors. IBM may make improvements or changes in the products or programs described herein at any time without notice. Any statements regarding IBM's future direction and intent are subject to change or withdrawal without notice, and represent goals and objectives only. References in this document to IBM products, programs, or services does not imply that IBM intends to make such products, programs or services available in all countries in which IBM operates or does business. Any reference to an IBM Program Product in this document is not intended to state or imply that only that program product may be used. Any functionally equivalent program, that does not infringe IBM's intellectual property rights, may be used instead.

Information is provided "AS IS" without warranty of any kind. THE INFORMATION PROVIDED IN THIS DOCUMENT IS DISTRIBUTED "AS IS" WITHOUT ANY WARRANTY, EITHER EXPRESS OR IMPLIED. IBM EXPRESSLY DISCLAIMS ANY WARRANTIES OF MERCHANTABILITY, FITNESS FOR A PARTICULAR PURPOSE OR NON-INFRINGEMENT. IBM shall have no responsibility to update this information. IBM products are warranted, if at all, according to the terms and conditions of the agreements (for example, IBM Customer Agreement, Statement of Limited Warranty, International Program License Agreement, etc.) under which they are provided. Information concerning non-IBM products was obtained from the suppliers of those products, their published announcements or other publicly available sources. IBM has not tested those products in connection with this publication and cannot confirm the accuracy of performance, compatibility or any other claims related to non-IBM products.

IBM makes no representations or warranties, express or implied, regarding non-IBM products and services.

The provision of the information contained herein is not intended to, and does not, grant any right or license under any IBM patents or copyrights. Inquiries regarding patent or copyright licenses should be made, in writing, to:

IBM Director of Licensing  
IBM Corporation  
North Castle Drive  
Armonk, NY 10504-1785  
U.S.A.

Performance is based on measurements and projections using standard IBM benchmarks in a controlled environment. All customer examples described are presented as illustrations of how those customers have used IBM products and the results they may have achieved. The actual throughput or performance that any user will experience will vary depending upon considerations such as the amount of multiprogramming in the user's job stream, the I/O configuration, the storage configuration, and the workload processed. Therefore, no assurance can be given that an individual user will achieve throughput or performance improvements equivalent to the ratios stated here.

© Copyright International Business Machines Corporation 2007. All rights reserved.

Note to U.S. Government Users - Documentation related to restricted rights-Use, duplication or disclosure is subject to restrictions set forth in GSA ADP Schedule Contract and IBM Corp.