



IBM Software Group

WebSphere® Message Broker Toolkit V6.0.2

Toolkit enhancements part 5: Broker administration



@business on demand.

© 2007 IBM Corporation
Updated May 30, 2007

This is the fifth and final module presenting the enhancements made to WebSphere Message Broker Toolkit V6.0.2.

Agenda

- Broker Administration
- Summary

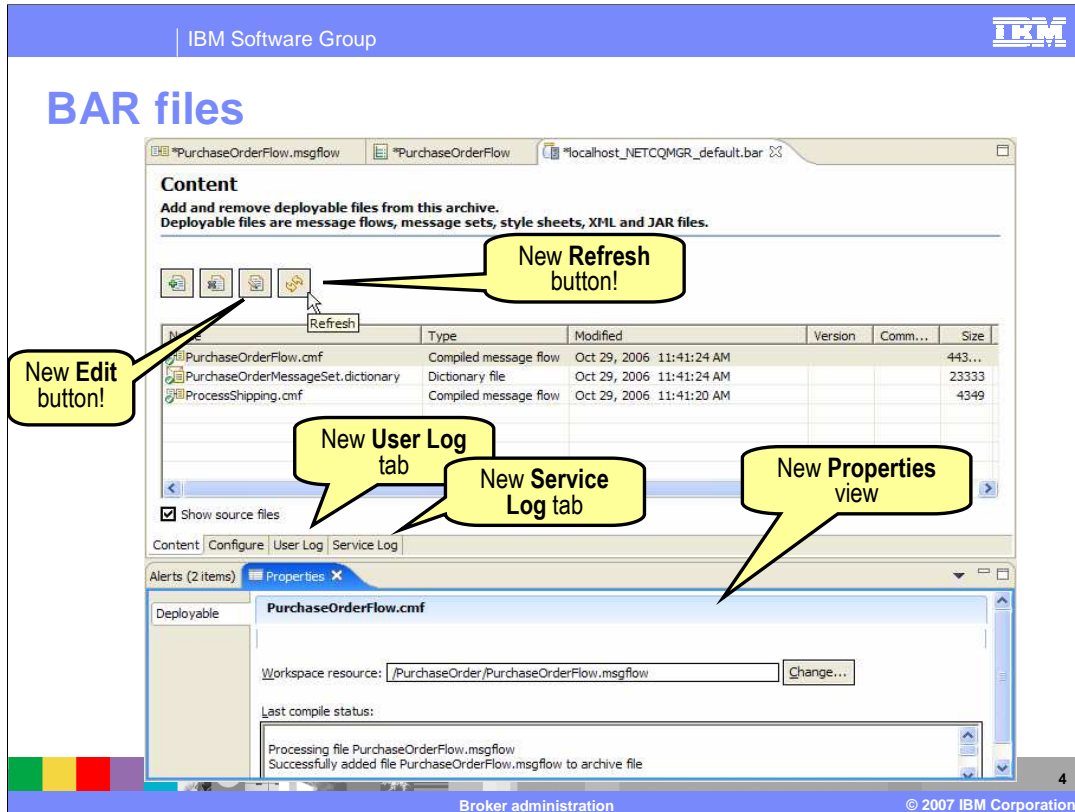


This presentation covers enhancements in the Broker Administration Perspective and a summary of all enhancements.

Section

Broker Administration

This section discusses the enhancements made in the Broker Administration perspective.



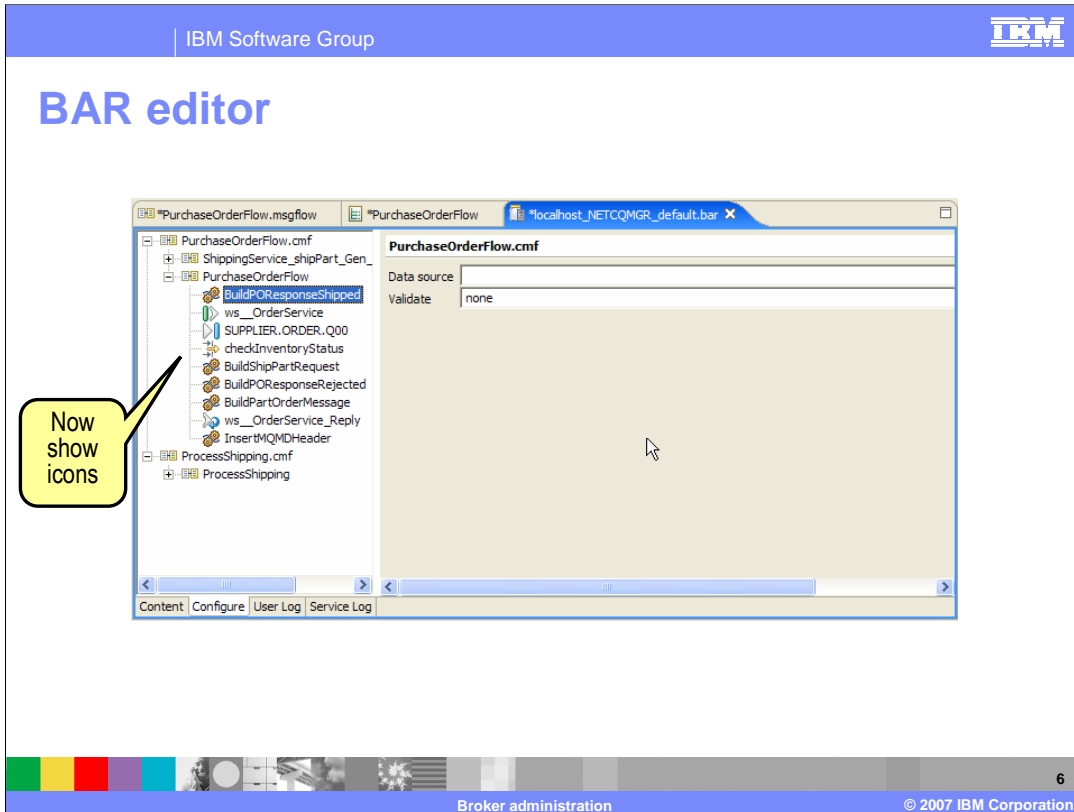
In WebSphere Message Broker Toolkit V6.0.2 you can now edit and refresh a BAR file. In addition a User Log and Service Log have been added at the bottom of the BAR file contents pane.

BAR file editor

The screenshot displays the IBM BAR file editor interface. The main window shows a tree view of resources on the left and a 'Content' table on the right. A 'Modify broker archive file entry' dialog box is open, allowing the user to change the name and comment of a selected resource. The 'Content' table lists resources like XML_FlightQue, XML_Passenger, and XML_CancelRe with columns for Name, Size, and Path. The 'Problems' pane at the bottom shows a warning for the selected resource.

Name	Size	Path
XML_FlightQue	462	
XML_FlightQue	428	
XML_Passenger	845	
XML_Reservati	967	
XML_FlightQue	676	
XML_CancelRe	911	

Selecting the edit button allows you to change the name of a resource (message flow or message set highlighted) in the BAR file. A resource name change does not affect the refresh function. Comments may also be added that are displayed in the resource entry, just after the Version column.



In the configuration tab of the V6.0.2 BAR editor, the icons for the nodes are shown.

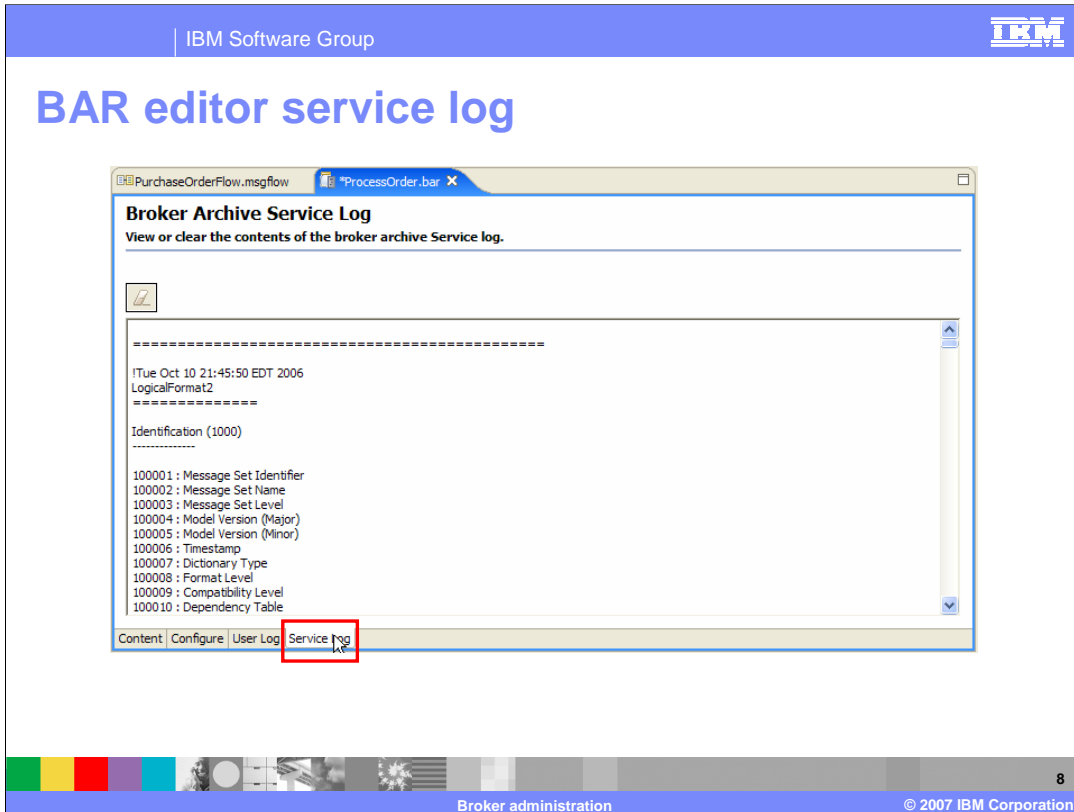
BAR editor user log

The screenshot shows a web browser window with two tabs: "PurchaseOrderFlow.msgflow" and "ProcessOrder.bar". The main content area is titled "Broker Archive User Log" and contains the text: "View or clear the contents of the broker archive User log." Below this is a search icon and a scrollable log area. The log contains the following text:

```
-----  
ITue Oct 10 21:45:49 EDT 2006  
Processing file "/PurchaseOrderMessageSet/PurchaseOrderMessageSet/messageSet.mset"  
  
BIP0177W This dictionary requires a Version 5 (or later) broker.  
This message set has namespace support enabled. Namespaces are not supported by brokers earlier than Version 5.  
  
"Broker will treat Length facet as Max.Length" is true. Length facets will be interpreted as maximum length only. This ensures that string fields which  
use padding characters will be processed correctly, but does not validate the message according to XML Schema rules. See the documentation for  
more details.  
  
Processing file "/PurchaseOrderMessageSet/com/acmeorders/www/customerinfo/CustomerInfo.mxsd"  
Processing file "/PurchaseOrderMessageSet/com/acmeorders/www/orderservice/OrderService.mxsd"  
Processing file "/PurchaseOrderMessageSet/com/acmeorders/www/orderservice/OrderService_InlineSchema1.mxsd"  
Processing file "/PurchaseOrderMessageSet/com/acmeorders/www/partsinfo/PartsInventory.mxsd"
```

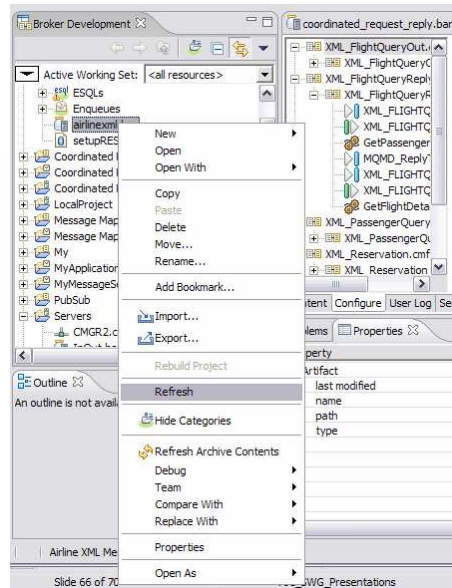
At the bottom of the log area, there are four tabs: "Content", "Configure", "User Log", and "Service Log". The "User Log" tab is highlighted with a red box.

This screen capture shows the Broker Archive User Log.



Here is a screen capture of the Broker Archive Service Log.

BAR refresh



A BAR file refresh is invoked by a right-click on the BAR file contents and selecting Refresh. There is also the Refresh button in the Content view of an opened BAR file.

Line command: mqsiapplybaroverride

- There is also a new command for updating the override values in a BAR file:

```
▪>>-mqsiapplybaroverride-- -b --barFile -p --propertiesFile
```

- **Parameters**

- -b barFile
 - (Required) The path to the broker archive file to apply override values to.
 - relative from the executable or a full path to the broker archive file
- -p propertiesFile
 - (Required) The path to the properties file containing the override values
 - relative from the executable or a full path to the properties file



In V6.0.2 there is a line command, mqsiapplybaroverride. This command provides a command-line tool that replaces configurable values in the barfile with new values specified in a properties file.

Using the mqsiapplybaroverride command together with the mqsicreatebar command, you can write scripts to create broker archive files and can apply different override values in the broker archive file.

Section

Summary

This section will provide a summary of this presentation.

Summary

New features of the WebSphere Message Broker Toolkit V6.0.2:

- Basics
 - ▶ Workbench layout
- Application Development
 - ▶ Quick start wizards
 - ▶ Message sets
 - ▶ Databases
 - ▶ WSDL and SOAP
 - ▶ Message flows
 - ▶ Mapping
 - ▶ Testing
- Broker Administration
 - ▶ BAR files

Enhancements to WebSphere Message Broker Toolkit in V6.0.2 have been presented in five modules. The first module discussed changes to the basic workbench layout and the quick start wizards for application development. The second module covered enhancements for the broker developer in the areas of message sets and databases. The third module discussed WSDL and SOAP enhancements including SupportPac IA90 which introduces two new nodes, the SOAPEXtract node and the SOAPEnvelope node. Module 3 also covered message flow enhancements. The fourth module covered mapping changes and the new capability for testing flows that begin with HTTPInput or MQInput nodes. This final module discussed Broker administration BAR file enhancements.

Feedback

Your feedback is valuable

You can help improve the quality of IBM Education Assistant content to better meet your needs by providing feedback.

- Did you find this module useful?
- Did it help you solve a problem or answer a question?
- Do you have suggestions for improvements?

Click to send e-mail feedback:

[mailto:iea@us.ibm.com?subject= Feedback about Toolkit5.Broker Admin.ppt](mailto:iea@us.ibm.com?subject=Feedback%20about%20Toolkit5.Broker_Admin.ppt)



You can help improve the quality of IBM Education Assistant content by providing feedback.

Trademarks, copyrights, and disclaimers

The following terms are trademarks or registered trademarks of International Business Machines Corporation in the United States, other countries, or both:

WebSphere

Product data has been reviewed for accuracy as of the date of initial publication. Product data is subject to change without notice. This document could include technical inaccuracies or typographical errors. IBM may make improvements or changes in the products or programs described herein at any time without notice. Any statements regarding IBM's future direction and intent are subject to change or withdrawal without notice, and represent goals and objectives only. References in this document to IBM products, programs, or services does not imply that IBM intends to make such products, programs or services available in all countries in which IBM operates or does business. Any reference to an IBM Program Product in this document is not intended to state or imply that only that program product may be used. Any functionally equivalent program, that does not infringe IBM's intellectual property rights, may be used instead.

Information is provided "AS IS" without warranty of any kind. THE INFORMATION PROVIDED IN THIS DOCUMENT IS DISTRIBUTED "AS IS" WITHOUT ANY WARRANTY, EITHER EXPRESS OR IMPLIED. IBM EXPRESSLY DISCLAIMS ANY WARRANTIES OF MERCHANTABILITY, FITNESS FOR A PARTICULAR PURPOSE OR NONINFRINGEMENT. IBM shall have no responsibility to update this information. IBM products are warranted, if at all, according to the terms and conditions of the agreements (for example, IBM Customer Agreement, Statement of Limited Warranty, International Program License Agreement, etc.) under which they are provided. Information concerning non-IBM products was obtained from the suppliers of those products, their published announcements or other publicly available sources. IBM has not tested those products in connection with this publication and cannot confirm the accuracy of performance, compatibility or any other claims related to non-IBM products.

IBM makes no representations or warranties, express or implied, regarding non-IBM products and services.

The provision of the information contained herein is not intended to, and does not, grant any right or license under any IBM patents or copyrights. Inquiries regarding patent or copyright licenses should be made, in writing, to:

IBM Director of Licensing
IBM Corporation
North Castle Drive
Armonk, NY 10504-1785
U.S.A.

Performance is based on measurements and projections using standard IBM benchmarks in a controlled environment. All customer examples described are presented as illustrations of how those customers have used IBM products and the results they may have achieved. The actual throughput or performance that any user will experience will vary depending upon considerations such as the amount of multiprogramming in the user's job stream, the I/O configuration, the storage configuration, and the workload processed. Therefore, no assurance can be given that an individual user will achieve throughput or performance improvements equivalent to the ratios stated here.

© Copyright International Business Machines Corporation 2007. All rights reserved.

Note to U.S. Government Users - Documentation related to restricted rights-Use, duplication or disclosure is subject to restrictions set forth in GSA ADP Schedule Contract and IBM Corp.

