



IBM Software Group

# WebSphere® Message Broker Version 6

## *Installation Launchpad for Windows*



@business on demand.

© 2006 IBM Corporation  
Updated 11 December 2006

This presentation discusses the new Windows Launchpad for Message Broker Version 6, and describes the steps needed to perform a basic installation of Message Broker.

## Overview

- Windows Launchpad design for Message Broker Version 6
- Express Installation
  - ▶ Quick default setup.
- Advanced Installation
  - ▶ For customizable setup.



The layout of the Message Broker Windows Launchpad has been redesigned for Version 6 of the product. The two main areas that have changed from Version 5 are the Express Installation panel and the Advanced Installation panel. The first offers a quick set up tool, and the second provides a customizable setup of all included products.

## Improvements

- Improved layout avoids confusion over buttons and panels
- Improved handling of required software, or removed requirement of additional software from product.
- Simplified user tasks in the Windows Launchpad.
- Improved initial experience
- Reduced time-to-start to 1.5 hours.



A new, or first time, user to the Message Broker will use the Windows Launchpad's Express Installation to get the product up and running quickly in a test or development environment, using default settings for the majority of installation options.

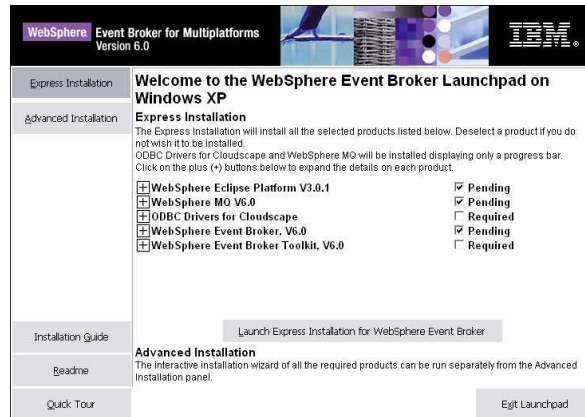
For a user who wishes to have control of how the required software is installed onto their system, the Advanced Installation panel offers that flexibility.

The Message Broker has become less restrictive in its software requirements, so some additional products are now offered as 'optional extras' instead of 'required'.

The installation for Message Broker on a Windows® platform, has now been reduced to only 90 minutes.

## Details – General improvements

- Panel and button placement were changed to a design in line with other product Launchpads
- Removed redundant panels.
- First panel gets you going.
- Improved Browsing facility for locating installers.
- Installation Guide, Readme & Quicktour launch buttons.



This slide shows the Windows Launchpad for Message Broker Version 6.

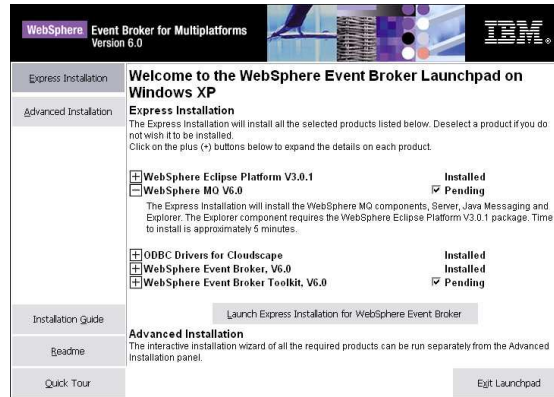
The buttons have been positioned on the left hand side for consistency with other products, such as WebSphere MQ, DB2<sup>®</sup> and products in the Rational brand.

All the colors will change to reflect your system settings. The screen capture here shows buttons as grey. Others will show blue when highlighted, and the text will change color.

The procedures for browsing installation packages and changing CDs have been improved over those provided in Version 5 of the product.

## Details - Express installation panel

- Quick and semi-automated installation process for getting a complete working solution of Event/Message Broker onto their local system.
- Visible system status of required software, before and during Express Installation
- Optional automated installation of required software, WebSphere MQ, ODBC Drivers for Cloudscape
- No CD changes are required when installing from the Windows DVD.



On the Express Installation Panel, the first three items at the top, the Eclipse Platform, WebSphere MQ, and the ODBC drivers for Cloudscape, are all installed automatically when installing the Message Broker. These items do not need any changes to enable installation.

These selections can be cleared using the checkbox on the right hand side. If the component is not installed, the message will say “Pending” and the box will be ticked. If you do not want this component, clear the box. The message will change to “Required”. This is because the components are considered the minimum set of components that are needed to create the Default Configuration.

If the component is already installed at the required level, the message will say “Installed”. If the component is not at the required level, the message will indicate that the required version is not installed. For further information, click on the “plus” sign for each component where this is required.

If you have higher levels of software than are required, then no further action will be necessary.

The minimum required level of MQ is Version 5.3.0.1. If this is installed, then the installation panel will show that MQ V5.3.0.1 is already installed. It will not overwrite this with WebSphere MQ Version 6. In fact, you will not have the option of installing WebSphere MQ Version 6 from this panel.

The ODBC drivers for Cloudscape provides a wrapper for the DB2 Runtime Client. This is the minimum version that is required to enable the default configuration wizard to run. If the default configuration wizard is not required, then the ODBC drivers are not required for installation.

## Details - Advanced installation panel

- Simplified interface to launch product installations.
- Complete customizable installations run from this panel.
- Additional products Rational® Agent Control and DB2 ESE can be installed from here.
- Status of the systems Database enablement is displayed.
- Refresh panel if changes have occurred on the system.

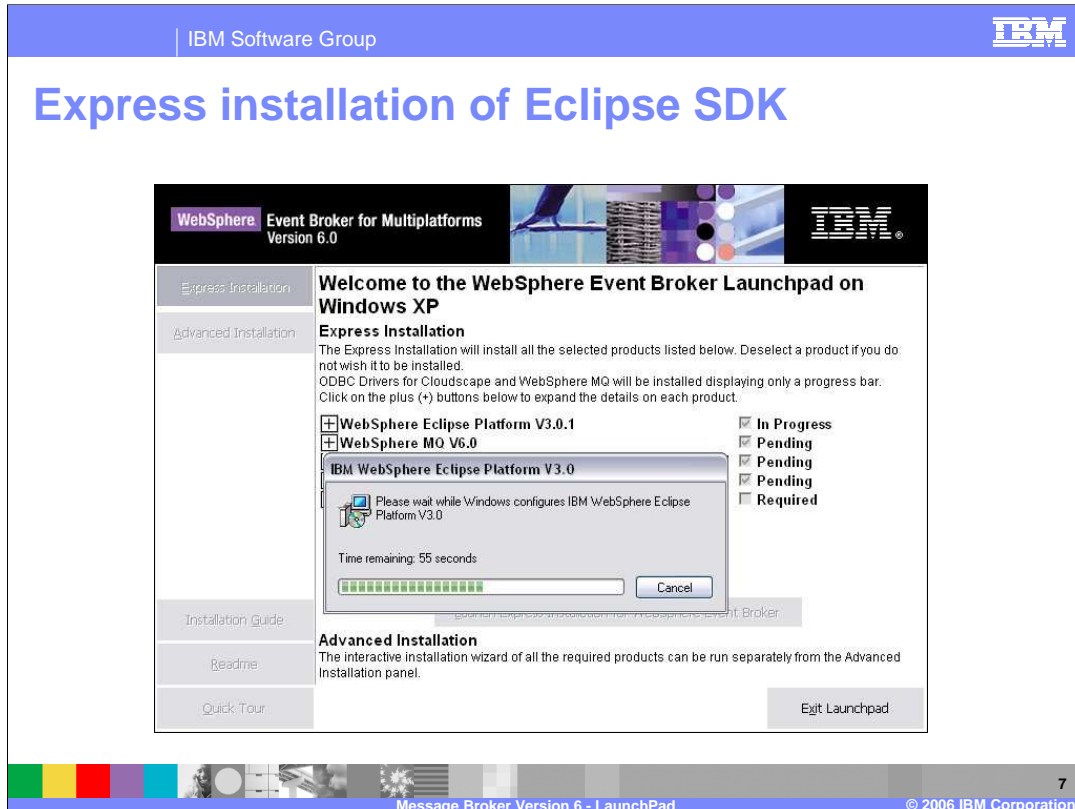


The Advanced installation offers almost the same panel as the Express installation, except that each product has to be installed individually. To do this, click on the plus sign next to each product that you want to install, then click on the selection button. The same type of status messages are produced on the right hand side.

In the bottom half of the panel, you see some optional products. Rational Agent Control is no longer a pre-requisite product, and can be selected for installation here. Also, DB2 Enterprise Server is no longer a pre-requisite product. If you require DB2, you can select it to be installed here.

The non-IBM products, Oracle, Sybase and Microsoft® SQL Server are included in this list purely for information. The installation process will tell you if these products are installed, but will not give an option to install them at this point.

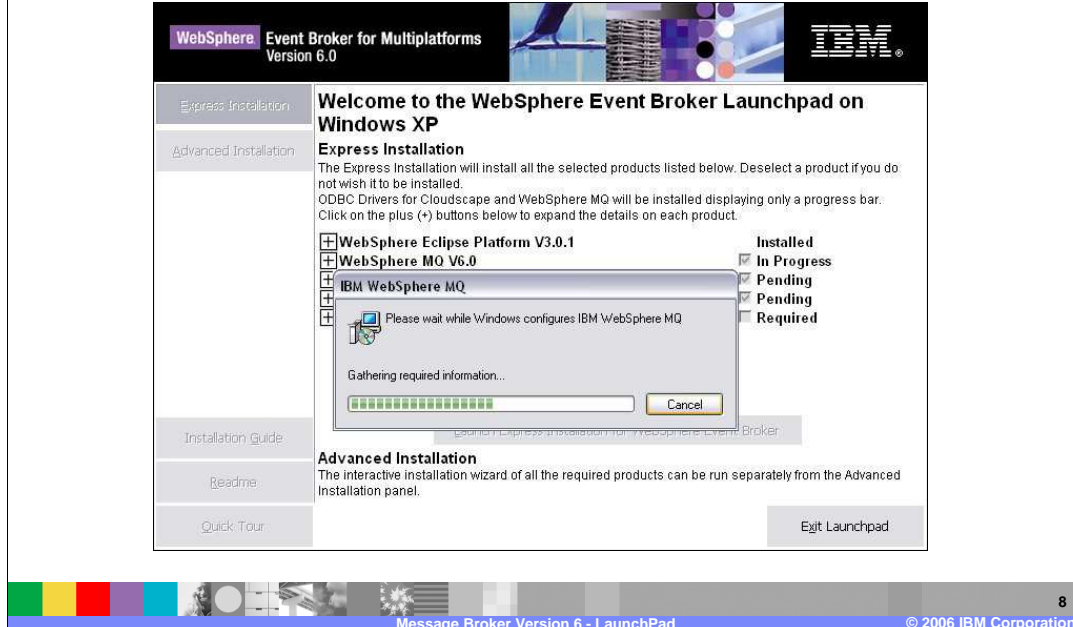
The “Refresh” button is used to correctly update this panel between installations, if it does not automatically do this.



When you click on the Install button, you will see progress windows for each product as it is installed. The status message will change to “In Progress” as the process moves through each component. You may stop the installation of each component by clicking Cancel on the progress window.

Default settings are used for the WebSphere Eclipse Platform, WebSphere MQ and ODBC Driver for Cloudscape installations, so only a progress indicator is displayed during those installs.

## Express installation of WebSphere MQ

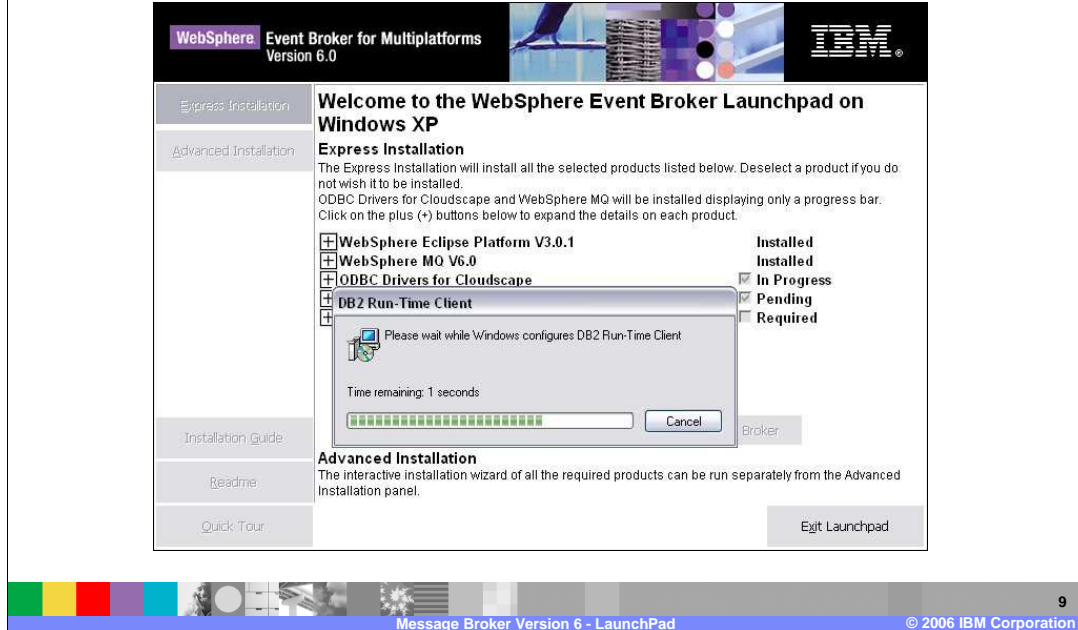


The WebSphere Eclipse Platform and WebSphere MQ are on the same CD so there will be no CD change between these components.

The default options for the MQ installation is the MQ Server component, the JMS Client, and the MQ Explorer plug-in. One reason for installing the Eclipse platform is to enable the MQ Explorer plug-ins.



## Express installation of ODBC drivers



Here you see the progress panel for the ODBC driver installation. This shows that it is installing the DB2 Runtime Client.

There will be a CD change prompt following the WebSphere MQ installation. The ODBC Driver for Cloudscape and Event/Message Broker are on the same CD.

## Advanced installation of WebSphere MQ 1

**WebSphere Event Broker for Multiplatforms Version 6.0**

Express Installation

Advanced Installation

### Advanced Installation for WebSphere Event Broker on Windows XP

The complete interactive Installation Wizards for the IBM products listed can be run from the drop-down box under each item. Also listed are the database managers supported for use with WebSphere Event Broker. Click on the plus (+) buttons below to expand the details on each product.

<input type="checkbox"/>	WebSphere Eclipse Platform V3.0.1	Installed
<input type="checkbox"/>	WebSphere MQ V6.0	Required
WebSphere Event Broker requires the WebSphere MQ Server, Java Messaging and Explorer components. Click on the button below to launch the installation wizard.		
<input type="button" value="Install WebSphere MQ V6.0"/>		
<input type="checkbox"/>	ODBC Drivers for Cloudscape	Installed
<input type="checkbox"/>	WebSphere Event Broker, V6.0	Installed
<input type="checkbox"/>	WebSphere Event Broker Toolkit, V6.0	Required
<input type="checkbox"/>	Rational Agent Controller V6	Installed
<input type="checkbox"/>	DB2 UDB Enterprise Server Edition V8.2 (Optional)	Not Installed
<input type="checkbox"/>	Oracle (Optional)	Not Installed
<input type="checkbox"/>	Sybase (Optional)	Installed
<input type="checkbox"/>	Microsoft SQL Server 2000 (Optional)	Installed

Installation Guide

Readme

Quick Tour

10

Message Broker Version 6 - LaunchPad © 2006 IBM Corporation

Here you see the Advanced installation, with more detail of the MQ component. Clicking on the plus sign shows a short description, then gives you the option of installing WebSphere MQ Version 6 directly from this panel. Do this by clicking on the “Install” button.

## Advanced installation of WebSphere MQ 2

**WebSphere Event Broker for Multiplatforms Version 6.0**

Express Installation | **Advanced Installation for WebSphere Event Broker on Windows XP**

The complete interactive Installation Wizards for the IBM products listed can be run from the drop-down box under each item. Also listed are the database managers supported for use with WebSphere Event Broker. Click on the plus (+) buttons below to expand the details on each product.

- WebSphere Eclipse Platform V3.0.1
- WebSphere MQ V6.0
- Oracle (Optional)
- Sybase (Optional)
- Microsoft SQL Server 2000 (Optional)

Installation Status Legend:

- Installed
- Required
- aging and Explorer
- installed
- installed
- Required
- installed
- Not Installed
- Not Installed
- Installed
- Installed

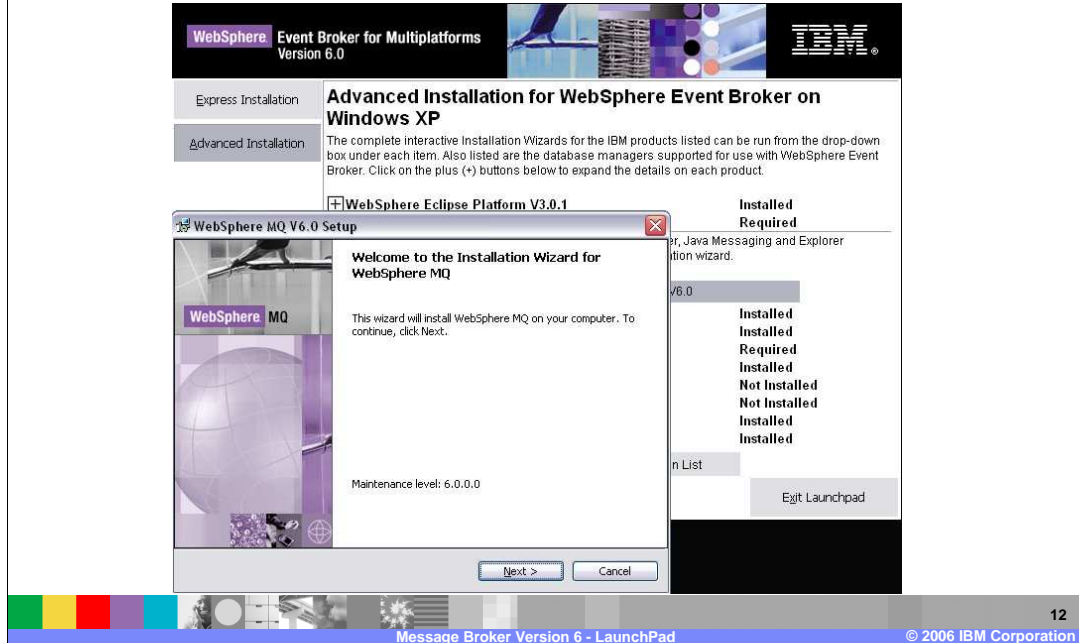
Installation Guide | Readme | Quick Tour

Refresh Advanced Installation List | Exit Launchpad

11  
Message Broker Version 6 - LaunchPad © 2006 IBM Corporation

If the required CD is not loaded into your computer, you will be prompted to load the correct CD. Specify the correct directory and click OK.

## Advanced installation of WebSphere MQ 3



When you have loaded the correct CD, a normal MQ installation will start. During this process, you can select the MQ components to install.

One difference between the Express and Advanced installation of Message Broker would be seen here. An Advanced installation of Message Broker will start a normal installation of MQ. An Express installation will start a “silent” installation of MQ.

## Debugging – Relevant documentation

- The Windows Launchpad does not produce a log of its own. The products create their own installation logs.
  - ▶ WebSphere MQ : %TEMP%\MQv6\_Install\_YYYY-MM-DDTHH-MM-SS.log.
  - ▶ ODBC Drivers for Cloudscape (or DB2 Runtime Client) : %HOMEPATH%\My Documents\DB2LOG\db2.log
  - ▶ WebSphere Event/Message Broker : %HOMEPATH%\mqsi6\_install.log
  - ▶ WebSphere Event/Message Broker Toolkit : <toolkit\_install\_dir>\logs\wmbt\_install.log
- If any of the product installations initiated by the Windows Launchpad do not complete successfully, you should retrieve the above logs from the system affected.



Each of the products produce their own installation log. These are in different locations, as shown in this slide. Note that the MQ installation contains a unique “date/time” indicator as part of the log file name.

If any aspect of the installation fails, you should investigate each of the product installation logs for further details.

## Debugging – How to interpret the documentation

- Any failure reports and return codes should be retained.
- Documented error codes for some products can be found in the following locations:
  - ▶ DB2 Information Center -  
<http://publib.boulder.ibm.com/infocenter/db2help/index.jsp>
  - ▶ WebSphere MQ, Event/Message Broker & Toolkit, Rational Agent Controller - WebSphere Documentation CD Version 6.0.
- The Installation Guide includes some typical installation problems with solutions



The DB2 documentation is all available on the internet.

The information for MQ Version 6, Rational Agent Controller, and the Message and Event Brokers, is all available on the Message Broker CDs.

## Trademarks, copyrights, and disclaimers

The following terms are trademarks or registered trademarks of International Business Machines Corporation in the United States, other countries, or both:

IBM	CICS	IMS	MQSeries	Tivoli
IBM (logo)	Cloudscape	Informix	OS/390	WebSphere
e(logo)/business	DB2	iSeries	OS/400	xSeries
AIX	DB2 Universal Database	Lotus	pSeries	zSeries

Java and all Java-based trademarks are trademarks of Sun Microsystems, Inc. in the United States, other countries, or both.

Microsoft, Windows, Windows NT, and the Windows logo are registered trademarks of Microsoft Corporation in the United States, other countries, or both.

Intel, ActionMedia, LANDesk, MMX, Pentium and ProShare are trademarks of Intel Corporation in the United States, other countries, or both.

UNIX is a registered trademark of The Open Group in the United States and other countries.

Linux is a registered trademark of Linus Torvalds.

Other company, product and service names may be trademarks or service marks of others.

Product data has been reviewed for accuracy as of the date of initial publication. Product data is subject to change without notice. This document could include technical inaccuracies or typographical errors. IBM may make improvements and/or changes in the product(s) and/or program(s) described herein at any time without notice. Any statements regarding IBM's future direction and intent are subject to change or withdrawal without notice, and represent goals and objectives only. References in this document to IBM products, programs, or services does not imply that IBM intends to make such products, programs or services available in all countries in which IBM operates or does business. Any reference to an IBM Program Product in this document is not intended to state or imply that only that program product may be used. Any functionally equivalent program, that does not infringe IBM's intellectual property rights, may be used instead.

Information is provided "AS IS" without warranty of any kind. THE INFORMATION PROVIDED IN THIS DOCUMENT IS DISTRIBUTED "AS IS" WITHOUT ANY WARRANTY, EITHER EXPRESS OR IMPLIED. IBM EXPRESSLY DISCLAIMS ANY WARRANTIES OF MERCHANTABILITY, FITNESS FOR A PARTICULAR PURPOSE OR NONINFRINGEMENT. IBM shall have no responsibility to update this information. IBM products are warranted, if at all, according to the terms and conditions of the agreements (e.g., IBM Customer Agreement, Statement of Limited Warranty, International Program License Agreement, etc.) under which they are provided. Information concerning non-IBM products was obtained from the suppliers of those products, their published announcements or other publicly available sources. IBM has not tested those products in connection with this publication and cannot confirm the accuracy of performance, compatibility or any other claims related to non-IBM products. IBM makes no representations or warranties, express or implied, regarding non-IBM products and services.

The provision of the information contained herein is not intended to, and does not, grant any right or license under any IBM patents or copyrights. Inquiries regarding patent or copyright licenses should be made, in writing, to:

IBM Director of Licensing  
IBM Corporation  
North Castle Drive  
Armonk, NY 10504-1785  
U.S.A.

Performance is based on measurements and projections using standard IBM benchmarks in a controlled environment. All customer examples described are presented as illustrations of how those customers have used IBM products and the results they may have achieved. The actual throughput or performance that any user will experience will vary depending upon considerations such as the amount of multiprogramming in the user's job stream, the I/O configuration, the storage configuration, and the workload processed. Therefore, no assurance can be given that an individual user will achieve throughput or performance improvements equivalent to the ratios stated here.

© Copyright International Business Machines Corporation 2006. All rights reserved.

Note to U.S. Government Users - Documentation related to restricted rights-Use, duplication or disclosure is subject to restrictions set forth in GSA ADP Schedule Contract and IBM Corp.