

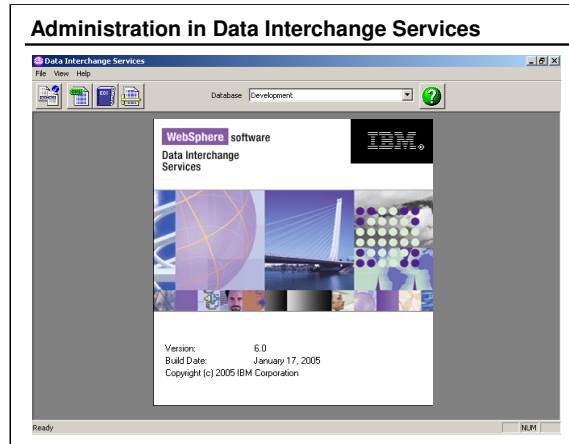


This module addresses the use of Windows and features of the WebSphere Data Interchange Services. It covers actions related to viewing and navigation, but does not address technical aspects of menus, actions, buttons, etc. The intent is to make you comfortable with basic navigation and use of Client Windows.

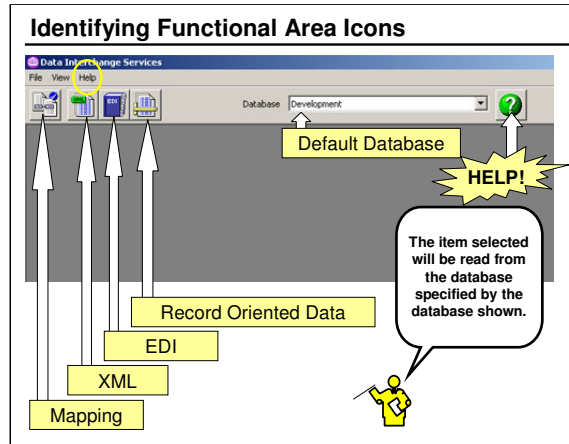
Unit Objectives

- Start the WebSphere Data Interchange Services (DIS)
- Identify the icons used by the DIS Client
- Effectively use DIS Client help
- Manage Windows in the DIS Client
- Select Client view preferences
- Handle a “locked” object
- Import and Export database objects
- Create and use Queries

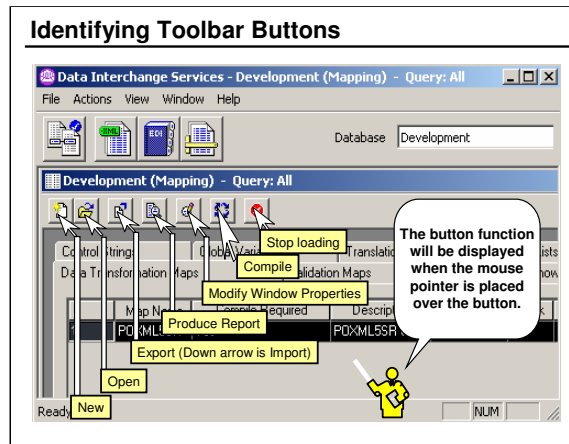
Each of these objectives is addressed in this unit.
You will require all of these skills for administration
and your class exercises.



WebSphere Data Interchange Services may be started by selecting Start/All Programs/IBM Interchange Services 6.0/DIS Client V6.0. Administration is performed using the Client.

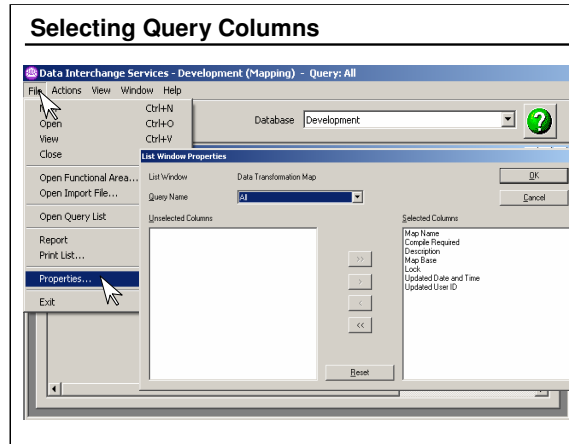


These buttons represent the basic functions of the Client. Except for Database, all of these are also available under the action **File / Open Functional Area**. The "Open" button is "View" instead of "Open" depending on the preference established. "Bubble Help" will appear as the mouse is placed over each of these buttons.

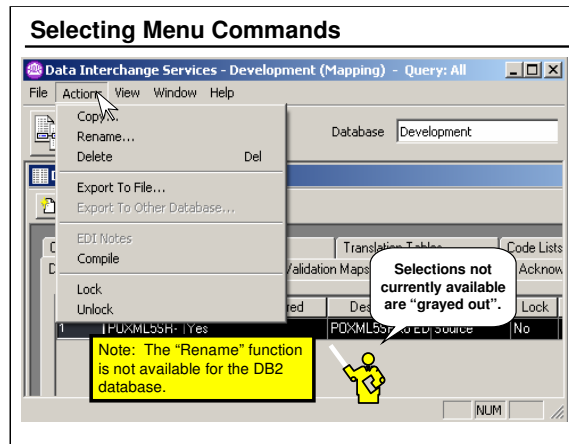


The icons featured are common buttons displayed for Windows that are presented when any functional area on the primary screen is selected. The button function will appear when the mouse pointer is placed on the button. The query is selected from a drop-down list.

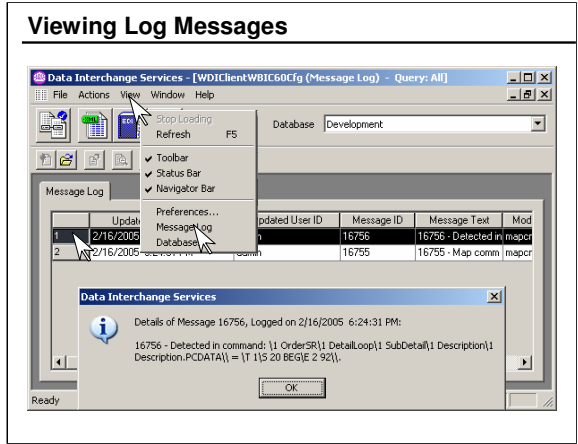
New provides for the creation of a new object. *Open* opens the selected object. *Export* (and *Import*) allow data to be extracted from a database to a flat file and moved from the flat file back to the same or another database. (Under *Actions*, an option is available to directly export an object to another database defined by the same Client user.) *Report* provides an



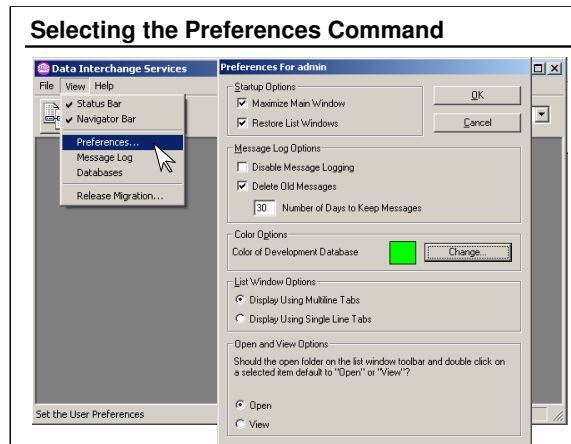
File / Properties command provides access to the same Query column selection list as the Modify Windows Properties icon. Selected Columns are the columns displayed when the Query is run. Columns may be selected and moved from “Available” to “Selected” and vice versa by clicking the “>” and “<” buttons. The “>>” and “<<” buttons move all columns from one list to the other. Columns available depend upon the currently active window.



Copy, *Rename*, and *Delete* provide actions to perform those functions against WDI objects such as profiles, maps, record oriented data definitions, EDI document definitions, and dictionaries. Objects may also be exported from the database to a flat file or directly to another database defined by this user. The *Rules* action is available only for maps, allowing rules to be defined for selecting maps for translation. *EDI Notes* allow notes to be entered for EDI segments defined by EDI document definitions and messages. The *Compile* action applies only to maps, generating compiled Control Strings used during translation. When an object is opened it is locked to prevent concurrent updates by two users. *Unlock* frees that object. This



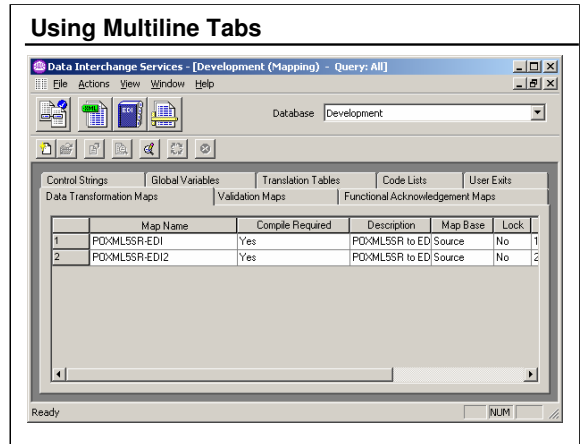
This is an example of log messages created when errors occur in the Client. The particular message is not relevant, but only serves as an example. Additional detail is provided for the message highlighted.



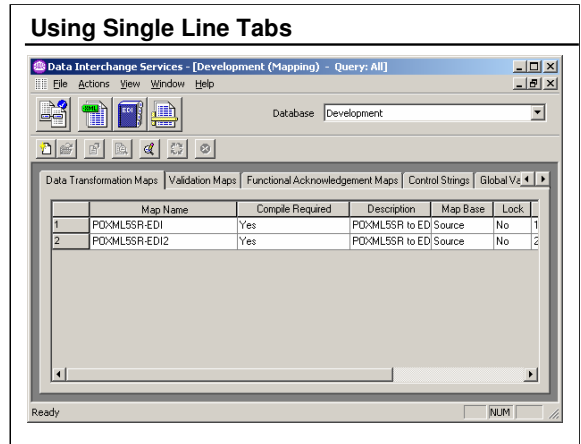
Here you can select *View / Preferences*. Under *Startup Options*, you can choose *Maximize Main Window* to cause the Client window to be maximized when started. *Restore List Windows* will cause the windows that were opened when the Client was last closed to be reopened the next time the Client is started.

This is also where **Message Logging** is controlled. This refers to messages produced while using the Client.

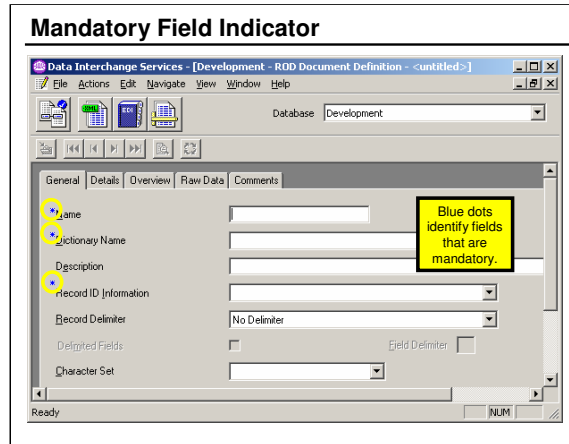
The background color for the current database may be selected here. This is useful in identifying the database to which objects belong.



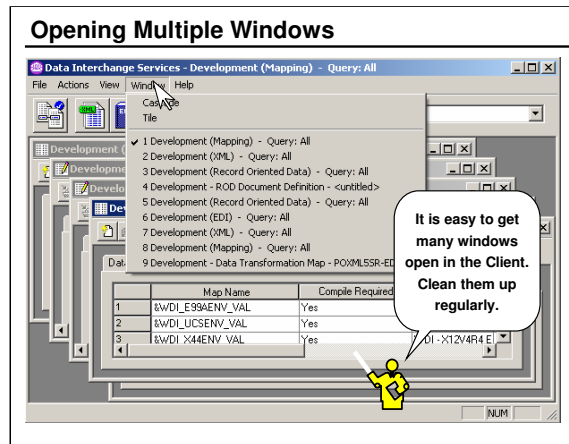
This is an example of the *Multiline Tabs* window option. This option gives you the ability to see all tabs at one time.



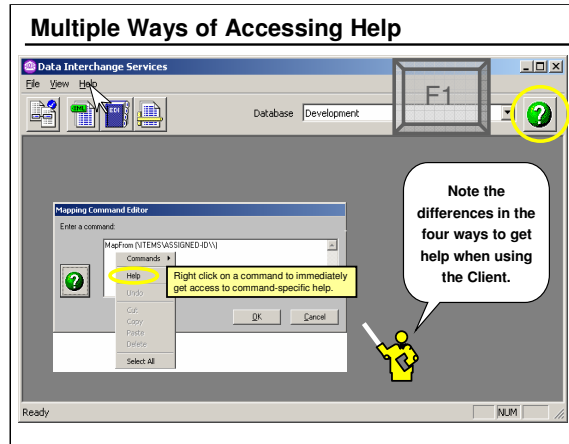
This is an example of the *Single Line Tabs* window option. This option gives you the ability to see tabs in a single line, with scroll arrows to view other tabs.



This panel will be addressed later. The blue dot to the left of a field name indicates that that field is mandatory.

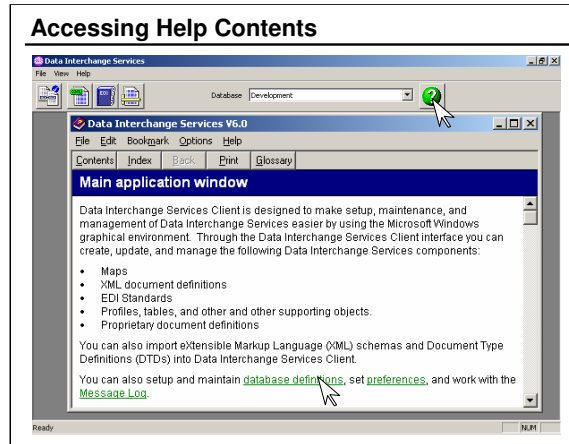


As you “drill down” into Client windows, all windows in the hierarchy stay open. It is good to get in the habit of closing windows no longer needed. Often a user can get two windows open for the same object. In this case, when the second window is opened, the first may have the object locked for update. The *Tile* and *Cascade* options may assist with identifying open windows.

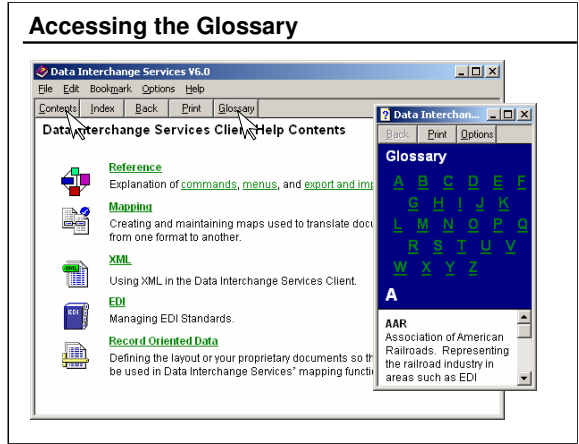


Users of the Client should use help readily and recognize that there are three methods to access help.

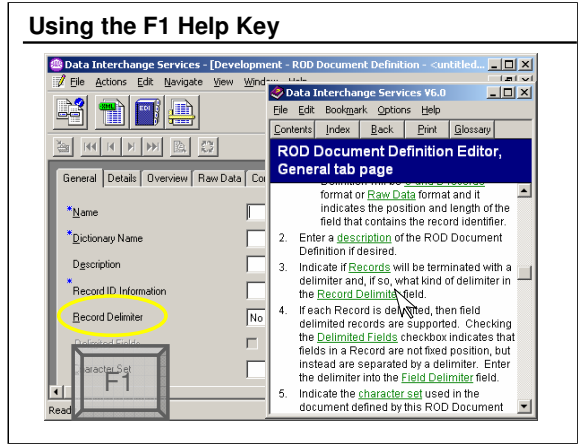
The F1 key will provide general help, but will display help relevant to the current Window or dialogue box. The ? help button will also provide help for the current Window or dialogue box. When dialogue boxes are open the Help action and the ? help button may, in some instances, be disabled. The Help action is useful for general help or for searching for help on a specific topic.



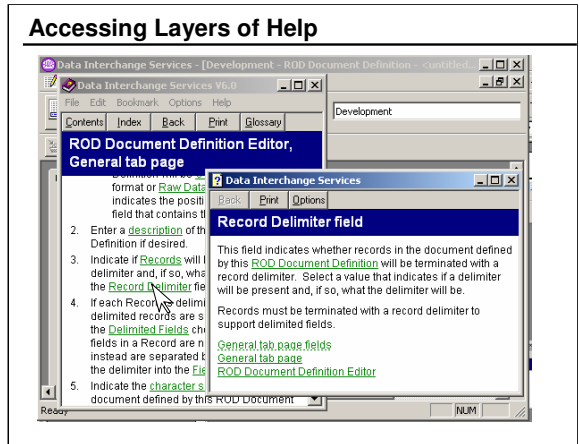
Note that the Help panels may be useful for tutorial information on using the Client. Useful references, such as the *Glossary*, are also available.



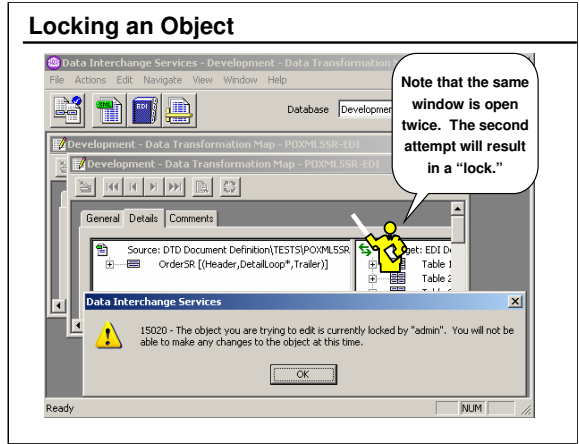
The Glossary is a handy reference. Try it and try to remember that it is available.



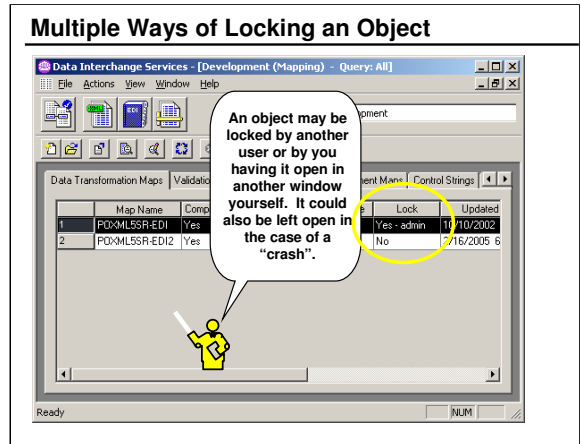
Press the F1 key to find out specific help on the Record Delimiter.



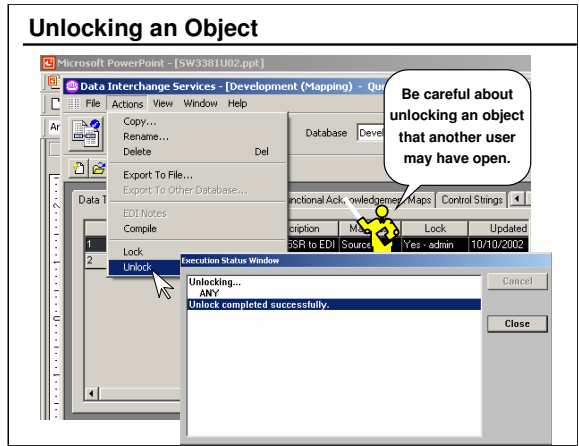
Notice that help provides links. You will frequently need to click on a link to get to the level of detail required.



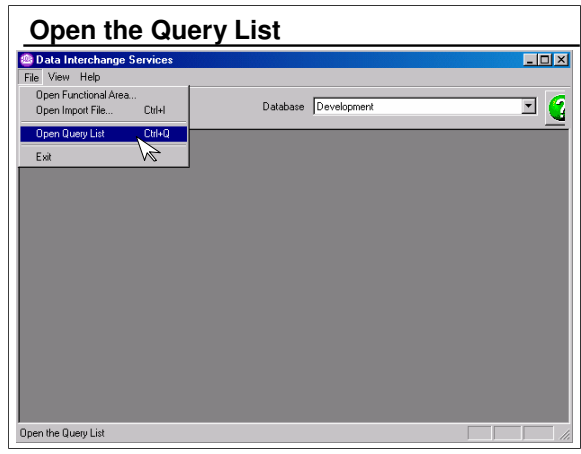
Note that two windows are opened for the same object.



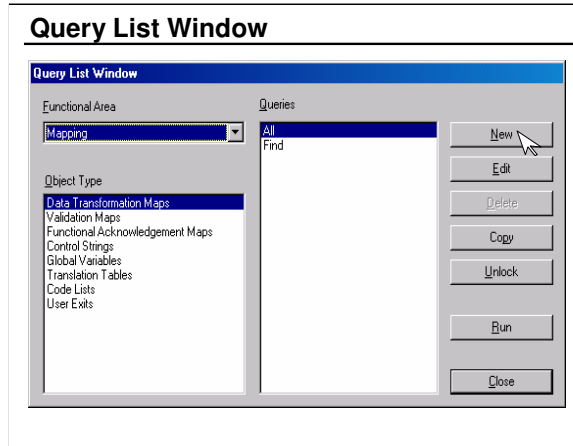
When you get the message that you are trying to edit an object that is locked, first check to see if you already have that object open in another window. Other possibilities are that the object was left locked when a system failure occurred or that another user is editing that object.



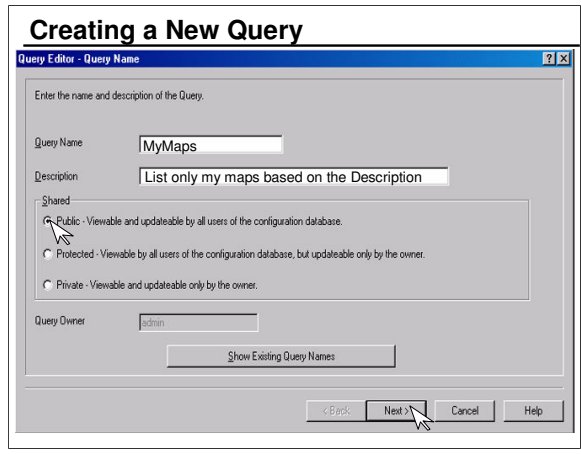
Normally, the only case you should have to manually unlock an object is when it was left open when the Client abnormally terminated.



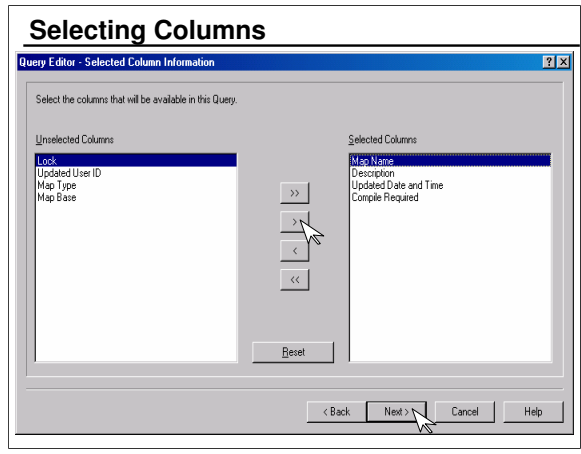
First select the database you wish to query. Then click File / Open Query List.



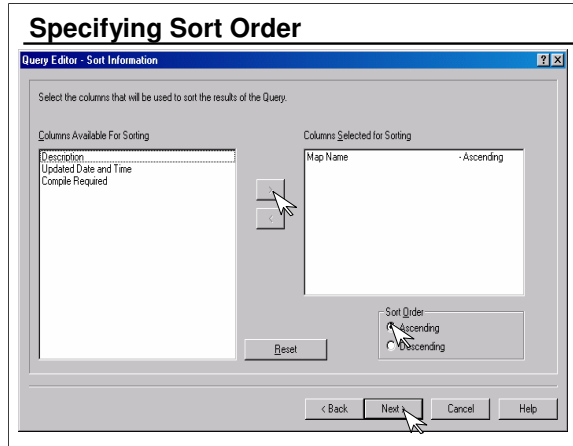
First select the Functional Area, then the Object Type for that area. A number of queries are predefined.



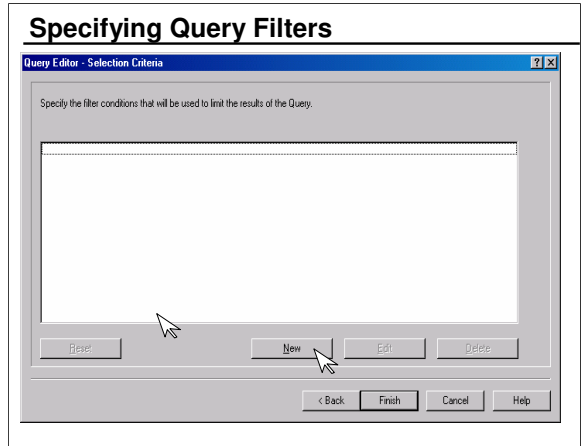
When you create your own query, you will be able to specify the columns to be displayed.



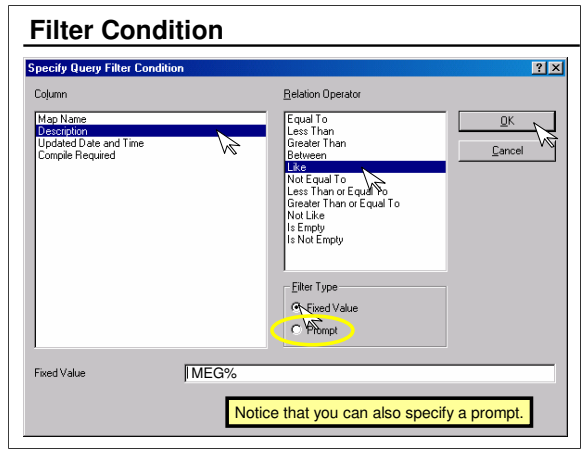
Select the columns to be displayed and click the right arrow (angle bracket). Click the double arrow to move all columns. Move the columns one-by-one in the order in which you want them displayed.



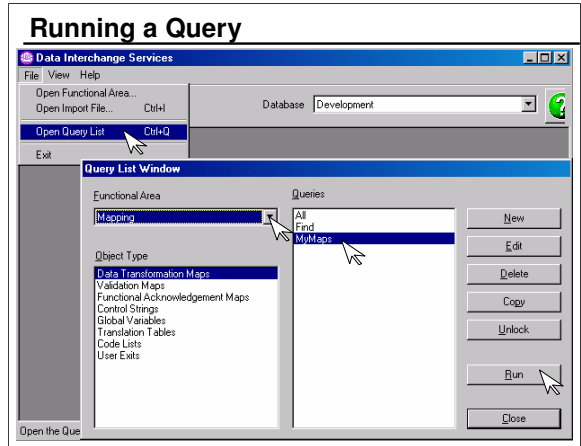
You can specifying ascending or descending sorting on any column displayed. More than one column may be selected for sorting.



If there are a large number of objects that will be displayed in the list window, you will want to filter your query results.



You may specify a fixed value or be prompted for the filter value.

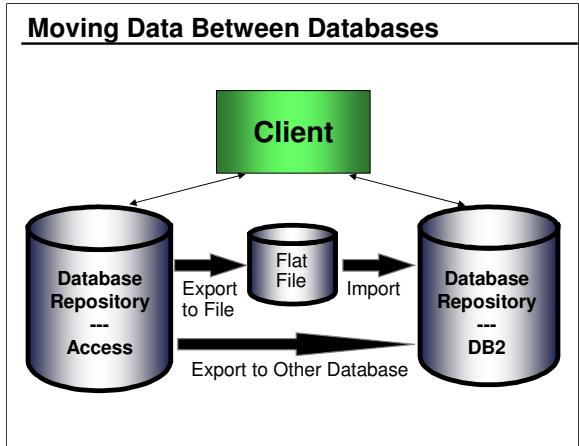


To run a Query, select the Query Type and Query name from the list and click Run.

Query Results

	Map Name	Description	Updated Date and Time	Compile Required
1	UNAPP2EDI1	MEG - Purchase Order to EDIFACT ORD	3/2/2005 2:17:52 AM	Yes
2	UNAPP2EDI2	MEG - Purchase Order to EDIFACT ORD	3/2/2005 2:18:11 AM	Yes
3	UNEDI2XML	MEG - EDIFACT ORDERS to XML transla	3/2/2005 2:18:30 AM	Yes
4	X12APP2EDI1	MEG - Maury's X12 Map for Exercise 5	3/2/2005 2:20:01 AM	No
5	X12APP2EDI2	MEG - Maury's X12 Map for Exercise 8	3/2/2005 2:20:10 AM	No
6	X12EDI2XML	MEG - 850 Purchase Order to XML Format	3/2/2005 2:19:32 AM	No

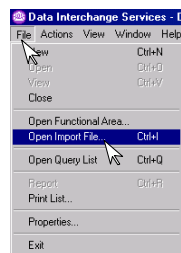
Here are the results of the “MyMaps” Query shown in the previous visual.



When the Client is connected to multiple databases, an object can be moved from one database to any of the others by selecting “Export to Other Database” from the Actions menu.

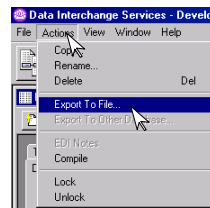
Import and Export Actions

File/Open Import File

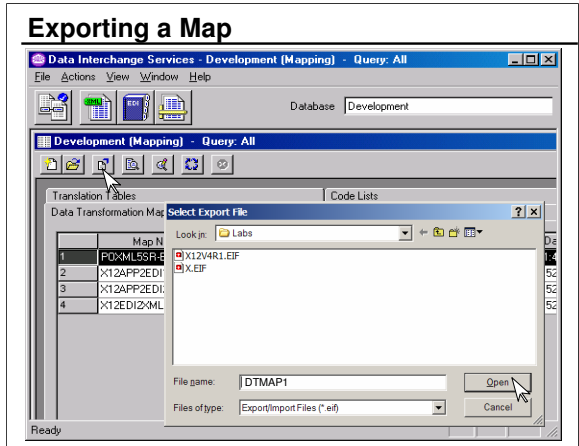


Actions/Export to File

Actions/Export to Other Database

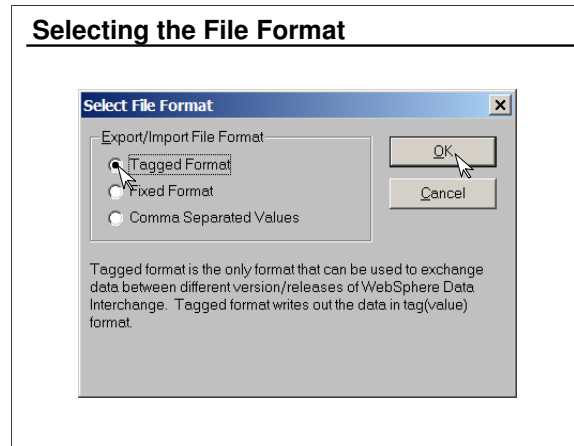


Export and import may be performed from the DIS Client. When importing, you import from a file, therefore the Import action is under “File”. When exporting, you select the object to be exported and then take action to export the selected object. Therefore, export is under “Actions”.



You can select the Export icon or click Actions / Export to File or Export to Other Database.

Selecting the File Format



The Tagged format is recommended.

Export / Import Formats	
Tagged	
0C1ADMIN 050301131132ENU060000000000	
AJ1	DICTIONARYNAME(CLASS) DESC(DTD for Class Lab Exercise) ALLDTDS(N)
AJ2	DICTIONARYNAME(CLASS) DOCNAME(XML-PO) DESC(Purchase Order)
DTDROOTTELEM(PO)	GRMRTYPE(D)
Fixed	
0C2ADMIN 050301131154ENU060000000000	
AJ1CLASS	DTD for Class Lab Exercise N
AJ2CLASS	XML-PO Purchase Order PO
D	
Comma-Separated	
0C3ADMIN 050301131216ENU060000000000	
AJ1	"CLASS";"DTD forClass Lab Exercise";"N"
AJ2	"CLASS";"XML-PO";"Purchase Order";"PO";"*****D"*****

This is an example of an XML DTD that was exported to each of the three available formats format. You cannot mix formats within one file.



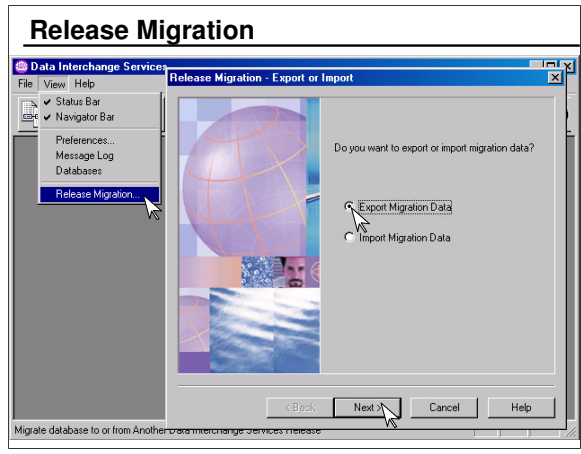
When a map is exported, there are a large number of associated objects that can be automatically identified the Client and exported along with the map. You may select these objects individually or request that all associated objects be exported along with the map.

Exporting to a Run-time Database

The run-time database may be Oracle or DB2. Only run-time objects may be exported to the run time database. This includes Control Strings, EDI Document Definitions, Code Lists, and Translation Tables. Maps, ROD Document Definitions, and XML Document Definitions are moved to the run-time database only in the form of Control Strings.



The run-time database may be Oracle or DB2. Only run-time objects may be exported to the run time database. This includes Control Strings, EDI Document Definitions, Code Lists, and Translation Tables. Maps, ROD Document Definitions, and XML Document Definitions are moved to the run-time database only in the form of Control Strings.



Release Migration may be used to export an entire database to a “.mig” file. All Windows must be closed before Release Migration can be selected.

Unit Summary

- WebSphere Data Interchange Services Client is started by selecting Start/All Programs/IBM Interchange Services 6.0/DIS Client V6.0 or clicking on the Data Interchange Services Client icon
- Icons define the functional areas of Data Interchange Services
- Data Interchange Services help is available using the "F1" key, the help icon, or the Help action
- Client windows must be managed carefully
- Client view preferences provide options for listing objects in functional areas and define colors for databases
- "Locked" objects are open in another window or user or left open after a system crash
- Export objects to a file or to another database by selecting Actions /Export
- Import objects into the database by selecting File / Import
- You can produce lists of database objects using existing Queries or by creating and running your own Queries

This presentation has addressed each of these objectives.

At this point you should be able to start the Data Interchange Services and manage windows and actions within the Client.