

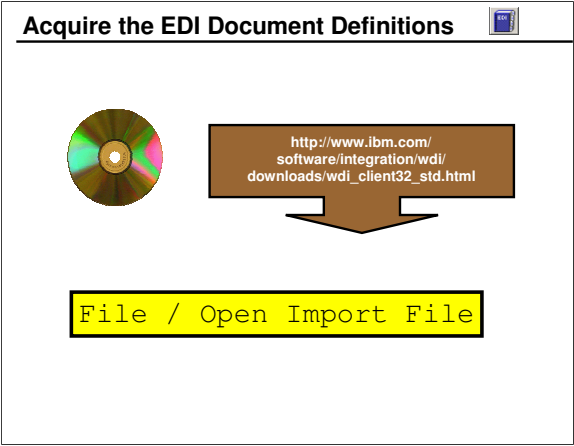
This unit will address EDI Document Definitions and the use of the Client in acquiring and accessing them.

Unit Objectives

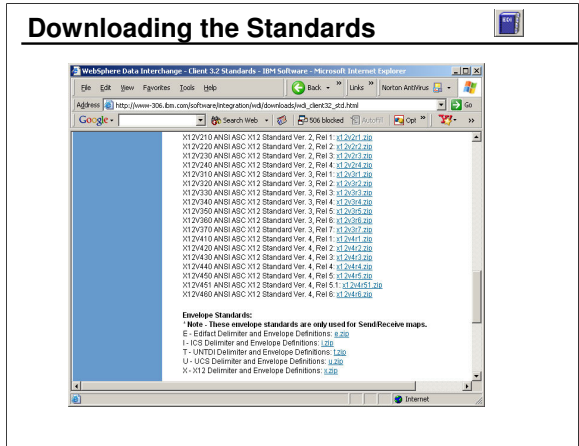


- Obtain the EDI standards from IBM
- Import the EDI standards using the Client
- Identify An EDI Dictionary
- View and modify the EDI Document Definitions
- View and define the element relationships
- Identify and describe the X12 element types
- Print EDI Document Definitions

Each of these objectives is addressed in this unit.



EDI Document Definitions are imported into WDI from the distribution CD or from the Web site referenced.



Standards available include AAR, UN/EDIFACT, UCS and WINS, VICS, and ANSI X12.

AAR - American Association of Railroads

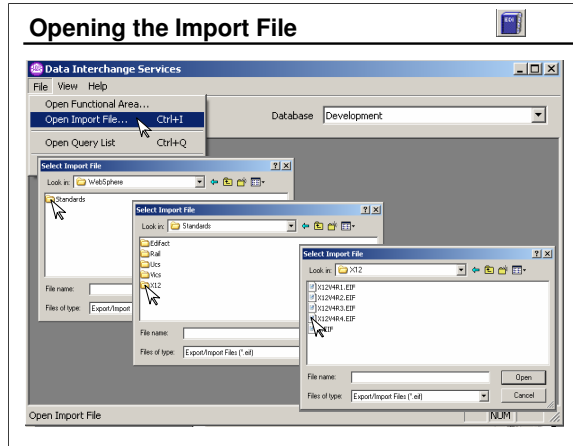
EDIFACT - United Nations / EDI for Administration, Commerce, and Transport

UCS - Uniform Communication Standard

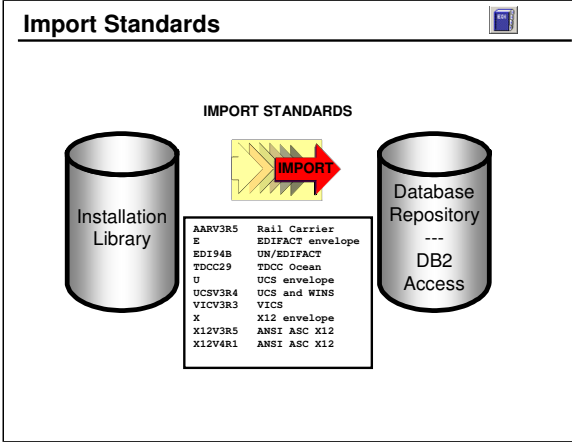
WINS - Warehousing (Warehouse Information Network Standards)

VICS - Retail (Voluntary Interindustry Commerce Standard)

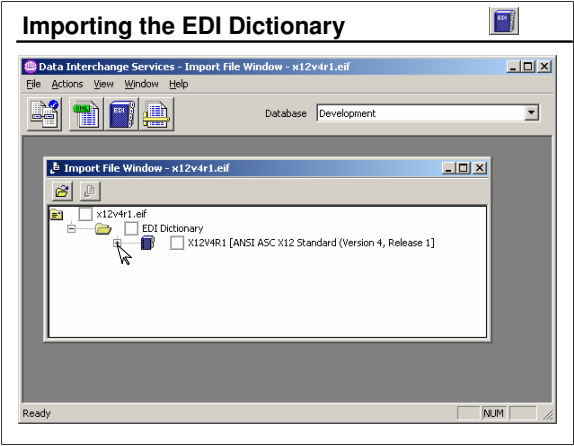
X12 - American National Standards Institute X12 (Accredited Standards Committee)



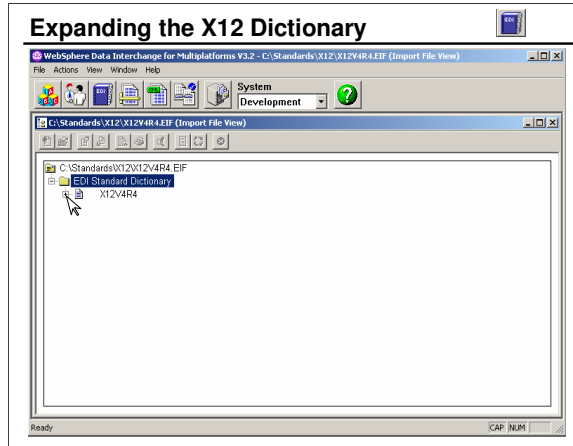
EDI Document Definitions are stored in files with the extension “.eif” or “.eifile”.



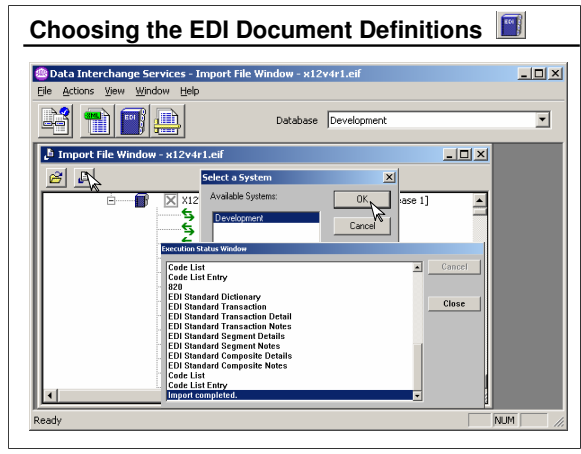
Before a map can use an EDI Document Definition, the standard for that EDI document must be imported into the database.



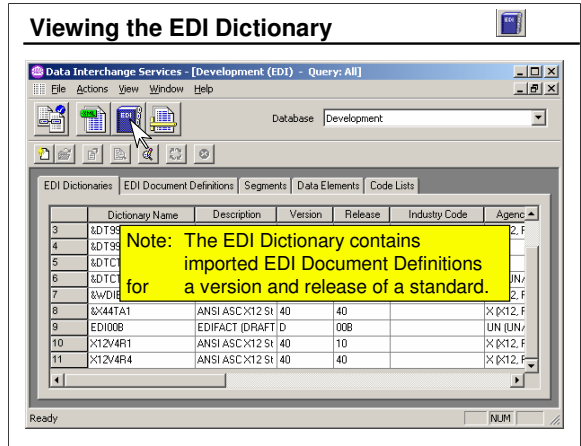
This slide shows not importing, but simply opening the EDI Dictionary.



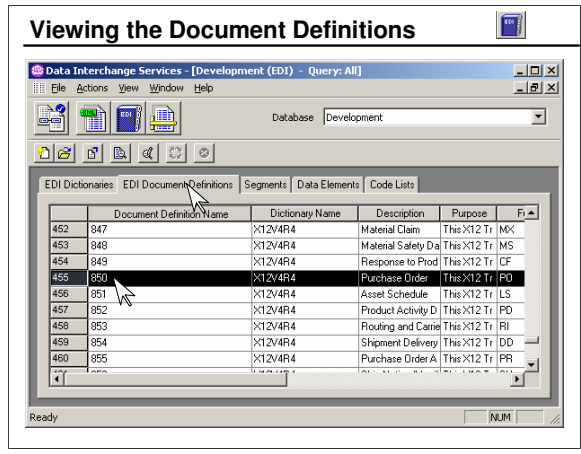
Here you see the EDI X12 V4 R4 (004040) Dictionary expanded to display the list of EDI Document Definitions in that standard.



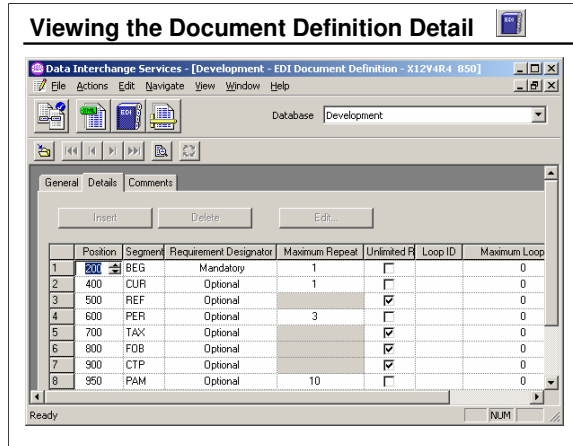
Expand the X12V4R4 (004040) Dictionary to display the EDI Document Definitions in that Dictionary. You can select multiple EDI Document Definitions by holding the Ctrl key and clicking the import icon.



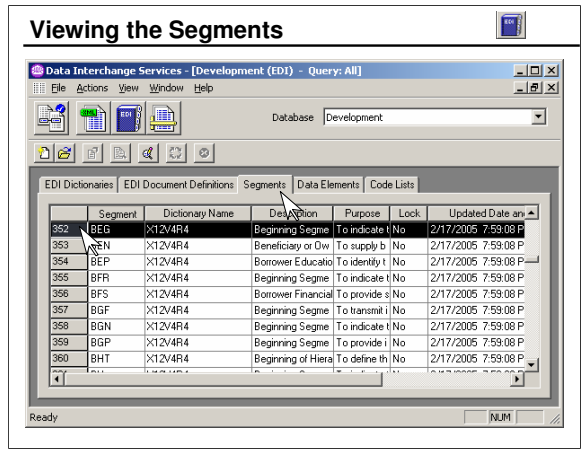
Each EDI Dictionary represents a version and release of a particular EDI standard and contains imported EDI Document Definitions for that version and release of the standard.



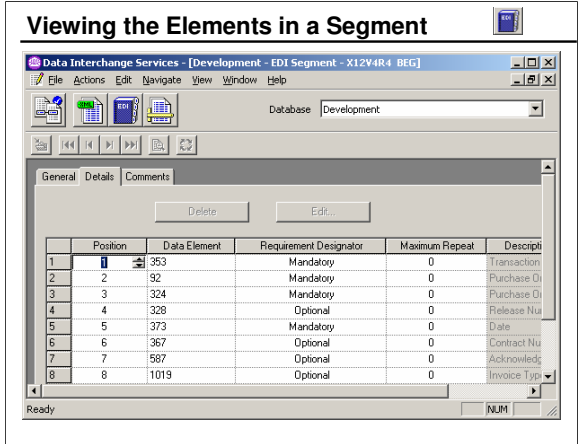
The EDI Functional Area within the Client provides excellent reference to EDI Document Definitions. This slide has been scrolled to a group of X12 EDI Document Definitions.



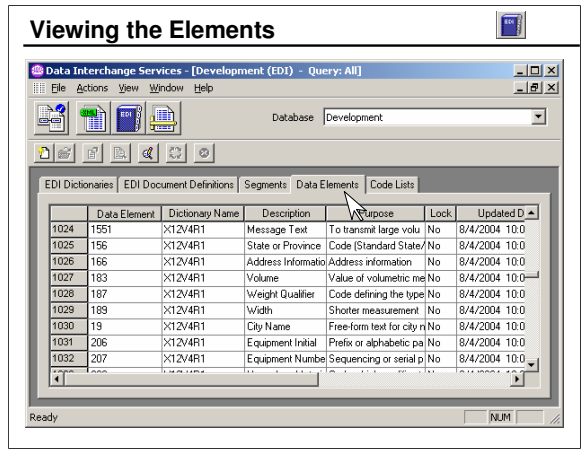
Notice the detail of an 850 X12 EDI Document Definition.



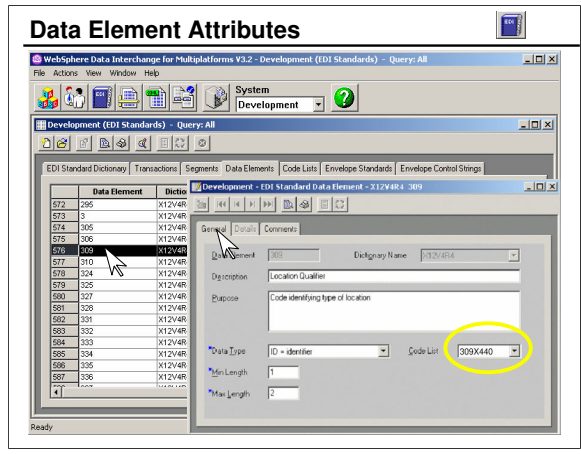
This is a list of segments in the 850 EDI Document Definition. When you double-click a segment, you can view the elements in that segment.



Here you see the elements in the BEG segment.

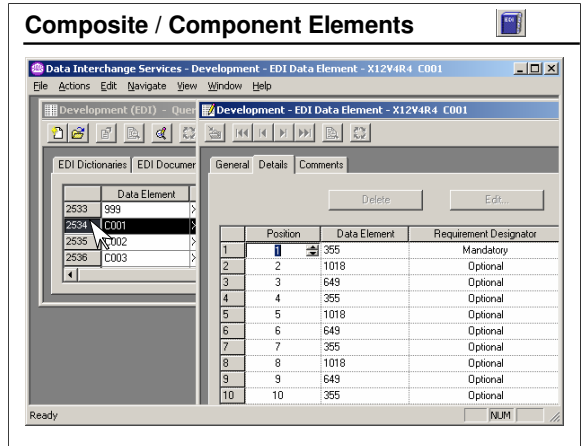


When you double-click an element, you can view the attributes of that element.



Note the data types for an element. You may modify data types, but it is not recommended. If an EDI Document Definition ever does need to be modified, first make a copy of that Document Definition.

The Code List field identifies the code list to be used to validate values for this data element.



Composite elements are very common in the UN/EDIFACT standard, but are also used within some X12 segment definitions.

X12 Segment Requirement Designators



- M – Mandatory – This segment must be present
- O – Optional – Trading Partners decide on the use of this segment
- F- Floating – This segment may appear anywhere within the transaction. This designator has been discontinued.

Segments may be mandatory or optional or (in the case of the NTE segment) floating.

UN/EDIFACT standards use mandatory and conditional designators for both segments and elements, where conditional has the same meaning as optional in the X12 standard.

X12 Element Requirement Designators



- M – Mandatory – This segment must be present
- O – Optional – Trading Partners decide on the use of this segment
- C – Conditional – The requirements for this element is based on the absence or presence of another element. The “C” designation is now officially “X” (Relational) as defined by the ANSI X12 Standard.

Elements may be mandatory, conditional or optional. When an element is conditional, the requirement for its presence is dependent upon the absence or presence of another element.

X12 Relational Definitions

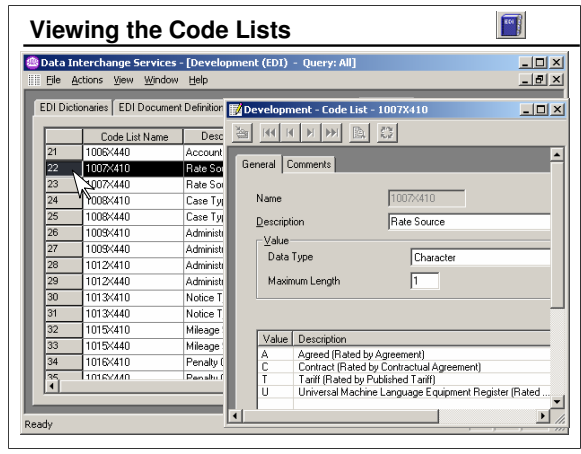


- P – Paired – If you have one element you must have the other(s)
- R – Required – One of these elements must be present
- E – Exclusive – No more than one of these elements may be present
- C – Conditional – If the first element is present, the other(s) must also be present
- L – List Conditional – If the first element is present, at least one of the other elements must be present

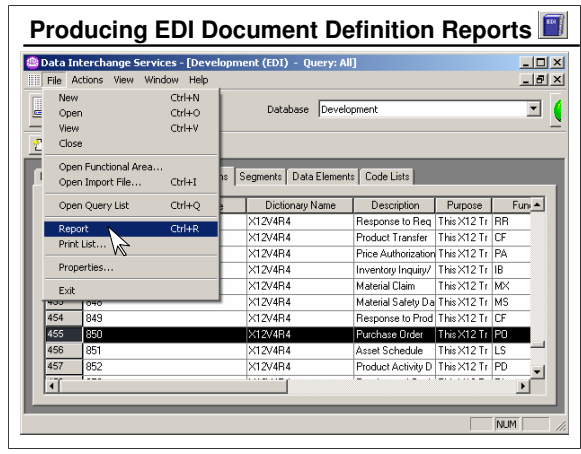
Here you see the characteristics of an element as defined by the X12 standards committee.

X12 Element Data Types	
• A – Alphabetic	• ID – Identifier (values defined in a code list)
• AN – Alphanumeric (string)	• IV – Incrementing Value
• B – Binary	• Nn – Numeric (n decimal positions assumed)
• CD – Composite data element	• PW – Password
• CH – Character	• R – Decimal number (real – with decimal point and sign)
• DT – Date	• TM – Time
• FS – Fixed-length string (Deleted in X12 0040010)	

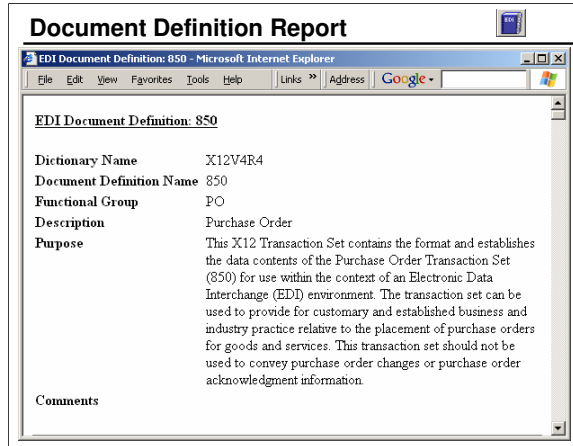
Here you see the data types defined by the ANSI X12 committee. Note that they are different than the data types defined by the DIS Client for Record Oriented Data fields.



EDI Code Lists are provided with the DIS Client, and include all valid values for each ID type element. You may wish to create your own Code List for a special-purpose or you may subset a Code List to restrict values acceptable for a given element.



Your primary activity with EDI Dictionaries and EDI Document Definitions will be importing them. However, once imported, they are a good source of reference. For information on EDI Document Definitions, segments, and elements, you will find the EDI Functional Area of the Client to be useful for reference. If you do not have an EDI standards manual handy, you may find it convenient to print an EDI Document Definition report from within the Client.



This is the general information provided by the report for the X12 850 EDI Document Definition.

Document Definition Report (cont.)

Segment	Data Element	Description	Mandatory	Data Type	Maximum Repeat
BEG		Beginning Segment for Purchase Order	Mandatory		1
	353	Transaction Set Purpose Code	Mandatory	ID = Identifier	2 / 2
	92	Purchase Order Type Code	Mandatory	ID = Identifier	2 / 2
	324	Purchase Order Number	Mandatory	AN = Alphanumeric	1 / 22
	328	Release Number	Optional	AN = Alphanumeric	1 / 30
	373	Date	Mandatory	DT = Date	8 / 8
	367	Contract Number	Optional	AN = Alphanumeric	1 / 30
	587	Acknowledgment Type	Optional	ID = Identifier	2 / 2

This shows the beginning of table 1 for the 850 purchase order transaction for X12.

Unit Summary



- Download EDI standards from the IBM Web site or load them from the distribution CD
- Import the EDI standards to produce EDI Document Definitions using the Client File/Import action
- An EDI Dictionary defines a version and release of a standard
- EDI Document Definitions can be viewed and edited
- Element relationships include conditional, paired, exclusive, required and list conditional
- X12 element types include character (CH), identifier (ID), real numbers (R), and others
- HTML Reports may be produced for EDI Document Definitions

This unit has addressed each of these objectives.