

WebSphere Partner Gateway V6.2.1

Profile migration revert



© 2013 IBM Corporation

WebSphere Partner Gateway and deployment manager profiles that have been migrated from WebSphere Application Server V6.1.0 to V7 can be reverted back to V6.1.0 using the WebSphere Application Server migration wizard.

Table of contents

- Overview of profile revert process:
 1. Revert deployment manager profile
 2. Remove hub and deployment manager profiles from WebSphere Application Server V7 (optional)
 3. Validate and update WebSphere Application Server V7 registry (optional)
 4. Delete hub and deployment manager profiles from file system (optional)
 5. Start WebSphere Partner Gateway artifacts in WebSphere Application Server V6.1.0

This presentation teaches you how to revert a profile and shows some screen captures from the process.



Stop WebSphere Partner Gateway artifacts

- Log in as bcguser to perform the following tasks in WebSphere Application Server V7:
 - Stop WebSphere Partner Gateway application servers
 - Stop node agents
 - Stop deployment manager

Log in as bcguser and stop the WebSphere Partner Gateway servers, node agents, and the deployment manager in WebSphere Application Server V7.

Revert the hub profile

- Revert the hub profile, using this command:
`<wpg_hub_home>/bin/bcgHubRevertMigrate.bat <wpg_hub_home>`

Revert the hub profile first, using the bcgHubRevertMigrate script.

Revert the deployment manager profile

- Revert the deployment manager profile, using this command:
`<wpg_hub_home>/bin/bcgDmgrRevertMigrate.bat <wpg_dmgr_home>`

Next, revert the deployment manager profile, using the `bcgDmgrRevertMigrate` script.

Remove profiles (optional)

- Optional step
- Remove all WebSphere Partner Gateway profiles from WebSphere Application Server 7:
`<path>\AppServer7\bin\manageprofiles.bat -delete -profileName <profile name>`

An optional step is to remove all WebSphere Partner Gateway profiles from WebSphere Application Server V7. This is done using the manageprofiles command. The purpose of this steps is to clean up the WebSphere Application Server V7 system.

Validate and update WebSphere Application Server V7 registry (optional)

- Optional step
- Validate and update WebSphere Application Server registry
`<path>\AppServer700\bin\manageprofiles.bat -validateAndUpdateRegistry`

The second optional step is to validate and update the WebSphere Application Server registry, with the command shown here.

Delete profiles

- Optional step
- Delete every WebSphere Partner Gateway profile in the WebSphere Application Server V7 file system
`<path>\AppServer7\bin\manageprofiles.bat -delete -profileName <profile name>`

The third optional step is to delete the WebSphere Partner Gateway profile from the WebSphere Application Server V7 file system.

Start WebSphere Partner Gateway artifacts

- Log in as bcguser to perform the following tasks in WebSphere Application Server V6.1.0
 - Start the deployment manager
 - Start node agents
 - Start bcgmas
 - Start WebSphere Partner Gateway application servers

At this point, you can start the WebSphere Partner Gateway environment in WebSphere Application Server V6.1.0.

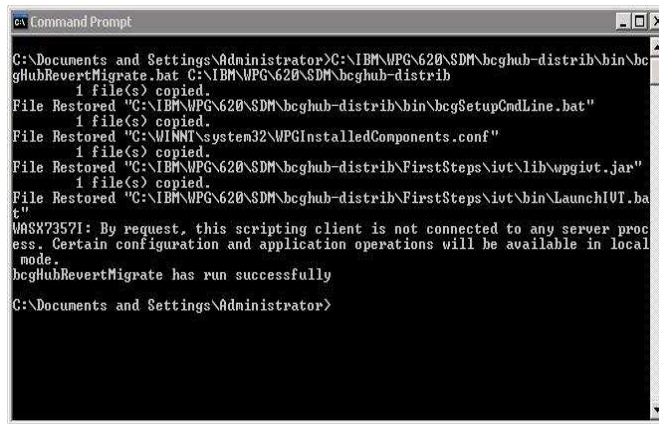
Screen captures

This section shows the actual screen captures taken during a profile revert test.

Stop WebSphere Partner Gateway artifacts in WebSphere Application Server V7

- Log in as bcguser, then:
 - Stop WebSphere Partner Gateway server
 - Stop bcgmas server (*)
 - Stop Node (*)
 - Stop DMgr (*)

(*) Distributed mode only



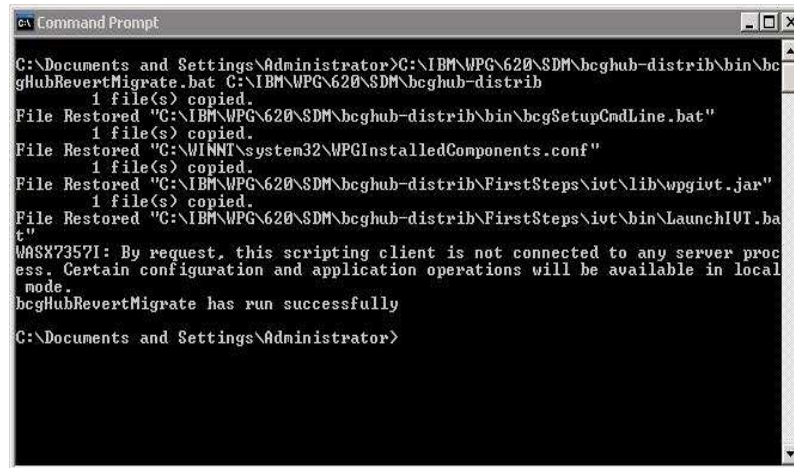
```
Command Prompt
C:\Documents and Settings\Administrator>C:\IBM\WPG\620\SDM\bcghub-distrib\bin\bcgHubRevertMigrate.bat C:\IBM\WPG\620\SDM\bcghub-distrib
1 file(s) copied.
File Restored "C:\IBM\WPG\620\SDM\bcghub-distrib\bin\bcgSetupCmdLine.bat"
1 file(s) copied.
File Restored "C:\WINNT\system32\WPG\InstalledComponents.conf"
1 file(s) copied.
File Restored "C:\IBM\WPG\620\SDM\bcghub-distrib\FirstSteps\ivt\lib\wpgivt.jar"
1 file(s) copied.
File Restored "C:\IBM\WPG\620\SDM\bcghub-distrib\FirstSteps\ivt\bin\LaunchIUI.bat"
WMSW73571: By request, this scripting client is not connected to any server process. Certain configuration and application operations will be available in local mode.
bcgHubRevertMigrate has run successfully
C:\Documents and Settings\Administrator>
```

Before reverting the profiles, stop all WebSphere Partner Gateway artifacts in WebSphere Application Server V7. For a distributed setup, stop the WebSphere Partner Gateway servers, the bcgmas server, the node agents, and the deployment manager.

Revert hub profile

- Revert hub profile:

```
<wpg_hub_home>/bin/bcgHubRevertMigrate.bat <wpg_hub_home>
```



```
Command Prompt
C:\Documents and Settings\Administrator>G:\IBM\WPG\620\SDM\bcghub-distrib\bin\bcgHubRevertMigrate.bat C:\IBM\WPG\620\SDM\bcghub-distrib
1 file(s) copied.
File Restored "C:\IBM\WPG\620\SDM\bcghub-distrib\bin\bcgSetupCmdLine.bat"
1 file(s) copied.
File Restored "C:\WINNT\system32\WPGInstalledComponents.conf"
1 file(s) copied.
File Restored "C:\IBM\WPG\620\SDM\bcghub-distrib\FirstSteps\ivt\lib\wpgivt.jar"
1 file(s) copied.
File Restored "C:\IBM\WPG\620\SDM\bcghub-distrib\FirstSteps\ivt\bin\LaunchIUT.bat"
WA$X7357I: By request, this scripting client is not connected to any server process. Certain configuration and application operations will be available in local mode.
bcgHubRevertMigrate has run successfully
C:\Documents and Settings\Administrator>
```

12

Profile migration revert

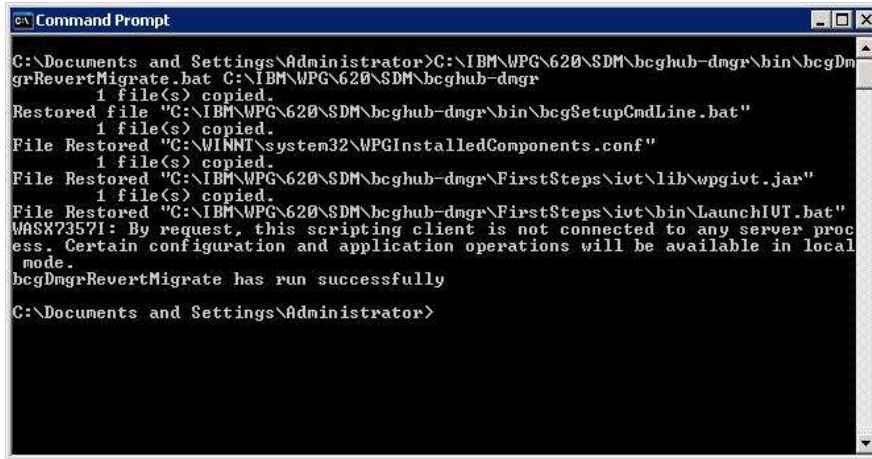
© 2013 IBM Corporation

Revert the WebSphere Partner Gateway hub profile first. Use the `bcgHubRevertMigrate` command from the hub home bin directory and pass the hub home directory as a parameter.

Revert deployment manager profile

- Revert DMgr profile:

```
<wpg_hub_home>/bin/bcgDmgrRevertMigrate.bat <wpg_dmgr_home>
```

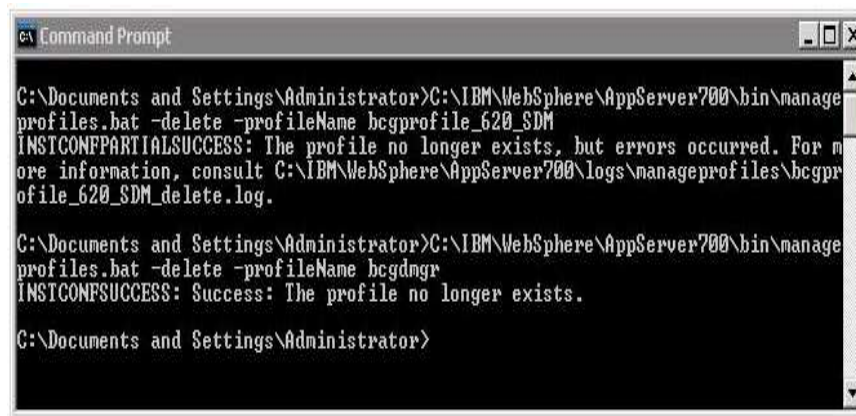


```
Command Prompt
C:\Documents and Settings\Administrator>C:\IBM\WPG\620\SDM\bcghub-dmgr\bin\bcgDmgrRevertMigrate.bat C:\IBM\WPG\620\SDM\bcghub-dmgr
1 file(s) copied.
Restored file "C:\IBM\WPG\620\SDM\bcghub-dmgr\bin\bcgSetupCmdLine.bat"
1 file(s) copied.
File Restored "C:\WINNT\system32\MPGInstalledComponents.conf"
1 file(s) copied.
File Restored "C:\IBM\WPG\620\SDM\bcghub-dmgr\FirstSteps\iut\lib\wpgiut.jar"
1 file(s) copied.
File Restored "C:\IBM\WPG\620\SDM\bcghub-dmgr\FirstSteps\iut\bin\LaunchIUT.bat"
WASX73571: By request, this scripting client is not connected to any server process. Certain configuration and application operations will be available in local mode.
bcgDmgrRevertMigrate has run successfully
C:\Documents and Settings\Administrator>
```

Next, revert the deployment manager profile. Use the `bcgDmgrRevertMigrate` command and pass in the deployment manager home location.

Remove hub and deployment manager profiles in WebSphere Application Server V7 (optional)

- Remove hub and deployment manager profiles in WebSphere Application Server V7:
`<path>\AppServer7\bin\manageprofiles.bat -delete -profileName <profile name>`



```
Command Prompt
C:\Documents and Settings\Administrator>C:\IBM\WebSphere\AppServer700\bin\manageprofiles.bat -delete -profileName bcgprofile_620_SDM
INSTCONFPARTIALSUCCESS: The profile no longer exists, but errors occurred. For more information, consult C:\IBM\WebSphere\AppServer700\logs\manageprofiles\bcgprofile_620_SDM_delete.log.

C:\Documents and Settings\Administrator>C:\IBM\WebSphere\AppServer700\bin\manageprofiles.bat -delete -profileName bcgdmgr
INSTCONFSUCCESS: Success: The profile no longer exists.

C:\Documents and Settings\Administrator>
```

14

Profile migration revert

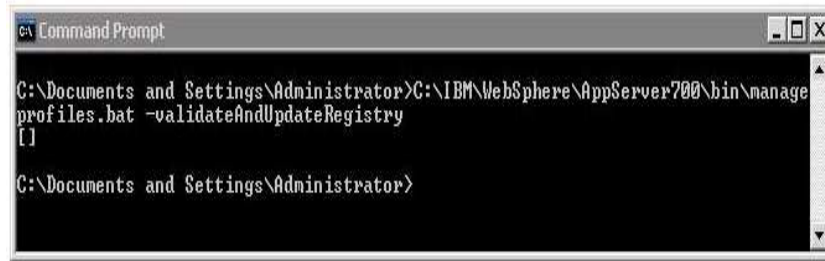
© 2013 IBM Corporation

The first of three optional steps is to remove the hub and deployment manager profiles from WebSphere Application Server V7. To do this, call the manageprofiles command with the -delete option and specify the profile name that you want to remove.

Validate and update WebSphere Application Server V7 registry (optional)

- Validate and update WebSphere Application Server registry

`<path>\AppServer7\bin\manageprofiles.bat -delete -profileName <profile name>`

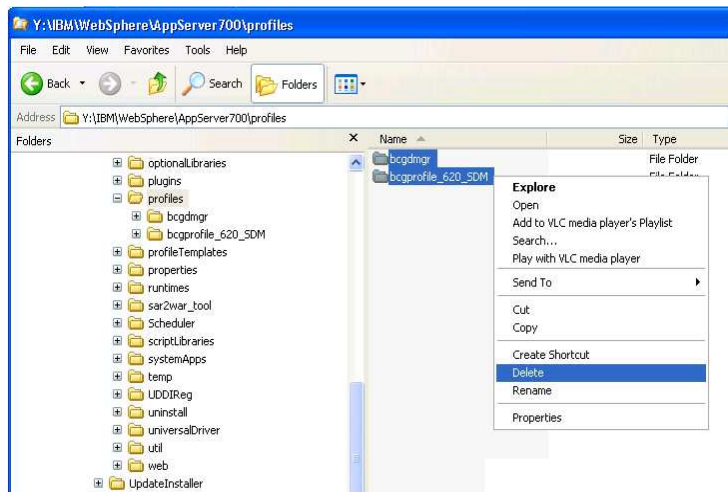


```
Command Prompt
C:\Documents and Settings\Administrator>C:\IBM\WebSphere\AppServer700\bin\manageprofiles.bat -validateAndUpdateRegistry
[]
C:\Documents and Settings\Administrator>
```

The second optional step is to validate the WebSphere Application Server V7 registry, as shown here.

Delete hub and deployment manager profiles in file system (optional)

- Remove hub and Deployment Manager profiles in WebSphere Application Server V7 file system



16

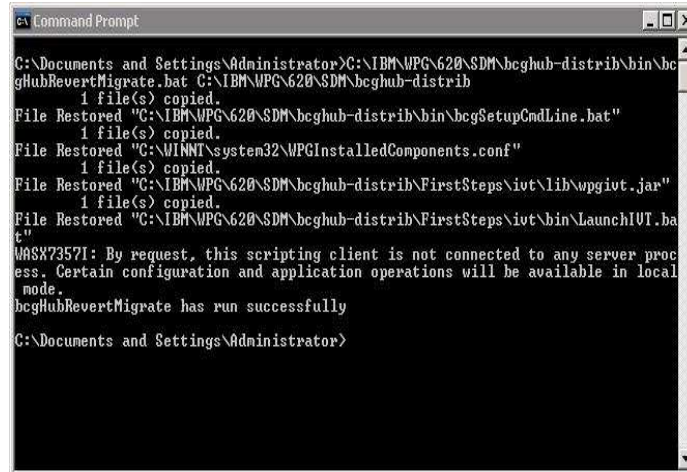
Profile migration revert

© 2013 IBM Corporation

Third and last optional step is to remove the hub and deployment manager profiles from the WebSphere Application Server V7 file system.

Start WebSphere Partner Gateway artifacts in WebSphere Application Server V6.1.0

- Log in as bcguser, then:
 - Start DMgr (*)
 - Start Node (*)
 - Start bcgmas server (*)
 - Start Gateway server
- (*) Distributed mode only



```
Command Prompt
C:\Documents and Settings\Administrator>C:\IBM\WPG\620\SDM\bcghub-distrib\bin\bcgHubRevertMigrate.bat C:\IBM\WPG\620\SDM\bcghub-distrib
1 file(s) copied.
File Restored "C:\IBM\WPG\620\SDM\bcghub-distrib\bin\bcgSetupCmdLine.bat"
1 file(s) copied.
File Restored "C:\WINNT\system32\WPGInstalledComponents.conf"
1 file(s) copied.
File Restored "C:\IBM\WPG\620\SDM\bcghub-distrib\FirstSteps\ivt\lib\wpgiwt.jar"
1 file(s) copied.
File Restored "C:\IBM\WPG\620\SDM\bcghub-distrib\FirstSteps\ivt\bin\LaunchIUT.bat"
WASX7357I: By request, this scripting client is not connected to any server process. Certain configuration and application operations will be available in local mode.
bcgHubRevertMigrate has run successfully
C:\Documents and Settings\Administrator>
```

Now the WebSphere Partner Gateway environment is completely reverted back to WebSphere Application Server V6.1.0. You can start the deployment manager, node agent, bcgmas server, and the WebSphere Partner Gateway servers. In a stand-alone environment, only the WebSphere Partner Gateway server is available; so only the last step is possible.



Feedback

Your feedback is valuable

You can help improve the quality of IBM Education Assistant content to better meet your needs by providing feedback.

- Did you find this module useful?
- Did it help you solve a problem or answer a question?
- Do you have suggestions for improvements?

Click to send email feedback:

mailto:iea@us.ibm.com?subject=Feedback_about_WPGV621_Profile_Migration_Revert.ppt

This module is also available in PDF format at: [../WPGV621_Profile_Migration_Revert.pdf](..../WPGV621_Profile_Migration_Revert.pdf)

You can help improve the quality of IBM Education Assistant content by providing feedback.



Trademarks, disclaimer, and copyright information

IBM, the IBM logo, and [ibm.com](http://www.ibm.com) are trademarks or registered trademarks of International Business Machines Corp., registered in many jurisdictions worldwide. Other product and service names might be trademarks of IBM or other companies. A current list of other IBM trademarks is available on the web at "[Copyright and trademark information](http://www.ibm.com/legal/copytrade.shtml)" at <http://www.ibm.com/legal/copytrade.shtml>

Other company, product, or service names may be trademarks or service marks of others.

THE INFORMATION CONTAINED IN THIS PRESENTATION IS PROVIDED FOR INFORMATIONAL PURPOSES ONLY. WHILE EFFORTS WERE MADE TO VERIFY THE COMPLETENESS AND ACCURACY OF THE INFORMATION CONTAINED IN THIS PRESENTATION, IT IS PROVIDED "AS IS" WITHOUT WARRANTY OF ANY KIND, EXPRESS OR IMPLIED. IN ADDITION, THIS INFORMATION IS BASED ON IBM'S CURRENT PRODUCT PLANS AND STRATEGY, WHICH ARE SUBJECT TO CHANGE BY IBM WITHOUT NOTICE. IBM SHALL NOT BE RESPONSIBLE FOR ANY DAMAGES ARISING OUT OF THE USE OF, OR OTHERWISE RELATED TO, THIS PRESENTATION OR ANY OTHER DOCUMENTATION. NOTHING CONTAINED IN THIS PRESENTATION IS INTENDED TO, NOR SHALL HAVE THE EFFECT OF, CREATING ANY WARRANTIES OR REPRESENTATIONS FROM IBM (OR ITS SUPPLIERS OR LICENSORS), OR ALTERING THE TERMS AND CONDITIONS OF ANY AGREEMENT OR LICENSE GOVERNING THE USE OF IBM PRODUCTS OR SOFTWARE.

© Copyright International Business Machines Corporation 2013. All rights reserved.