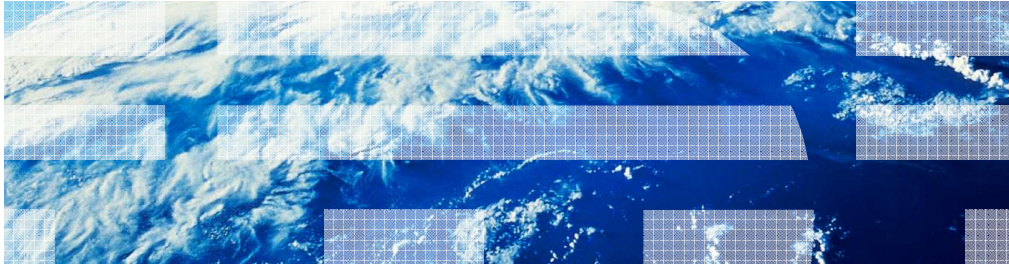


---

# WebSphere Partner Gateway V6.2.1: Installing WebSphere Application Server Version 7



© 2012 IBM Corporation

This presentation is meant to help users who want to migrate WebSphere Partner Gateway from WebSphere Application Server Version 6.1 to Version 7.

## Agenda

- 3 - Overview
- 4 - Main menu
- 5 - Welcome
- 6 - License agreement
- 7 - System prerequisites check
- 8 - Optional features installation
- 9 - Installation directory
- 10 - WebSphere Application Server environments
- 11 - Repository for centralized installation managers
- 12 - Installation summary
- 13 - Installation results

This is the agenda, which helps summarizing the presentation contents as follows:

Slide 3 starts with some general information about this presentation.

Slides 4-13 details the panel sequence and user inputs necessary to install WebSphere Application Server V7.

## Overview

- WebSphere Partner Gateway V6.2.1 introduced support for WebSphere Application Server Version 7
- Once WebSphere Application Server V7 is installed, the WebSphere Partner Gateway profiles can be migrated from WebSphere Application Server V6.1.0 to Version 7
- The minimum WebSphere Application Server V7 level is fix pack 13 (7.0.0.13)
- This presentation is meant to help you with the steps necessary to install WebSphere Application Server V7

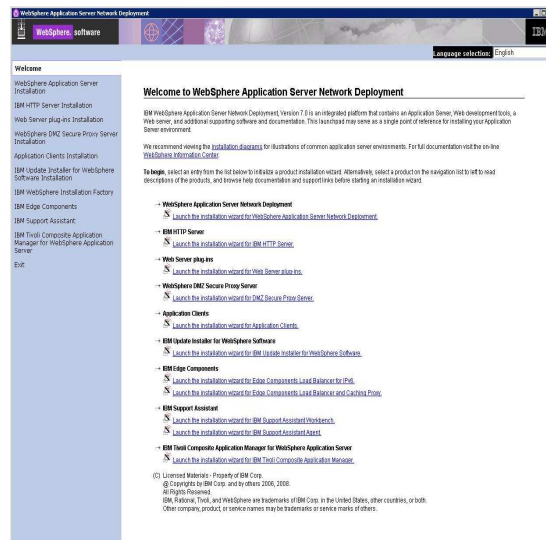
With Version 6.2.1, WebSphere Partner Gateway introduced support for WebSphere Application Server Version 7.

Once WebSphere Application Server Version 7 is installed, the WebSphere Partner Gateway profiles can be migrated from WebSphere Application Server Version 6.1 to Version 7.

The minimum patch level for WebSphere Application Server Version 7 is fix pack 13.

## WebSphere Application Server V7 - Main menu screen

- From the main menu screen, select the first option:
  - "Launch the installation Wizard for WebSphere Application Server Network Deployment"



From the main menu screen, select the first option: "Launch the installation Wizard for WebSphere Application Server Network Deployment."

## WebSphere Application Server V7 - Welcome screen

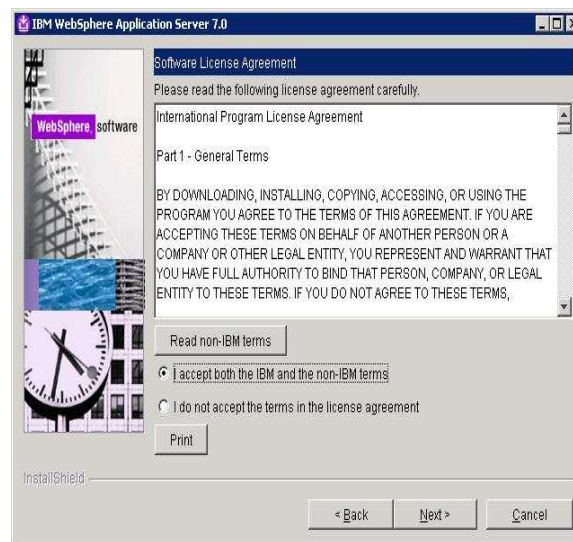
- In the welcome screen, click “next”



In the Welcome screen, click “Next.”

## WebSphere Application Server V7- License agreement screen

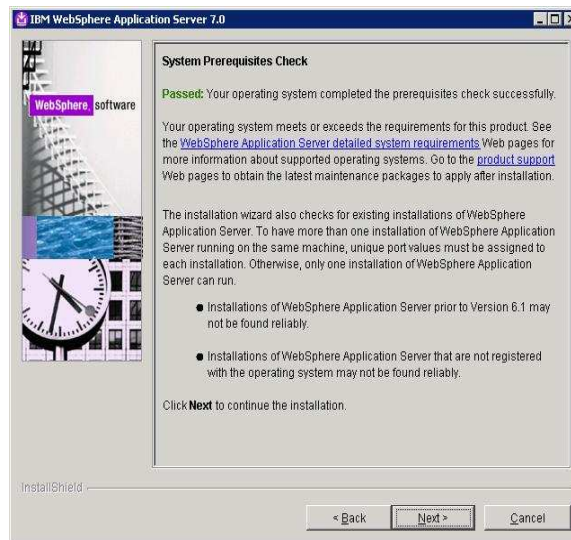
- Review the license agreement
- Click the radio button to “accept both the IBM and the non-IBM terms”
- Then click “Next”



Review the license agreement. Click the radio button to “accept both the IBM and the non-IBM terms.” Then click “Next.”

## WebSphere Application Server V7- System prerequisites check screen

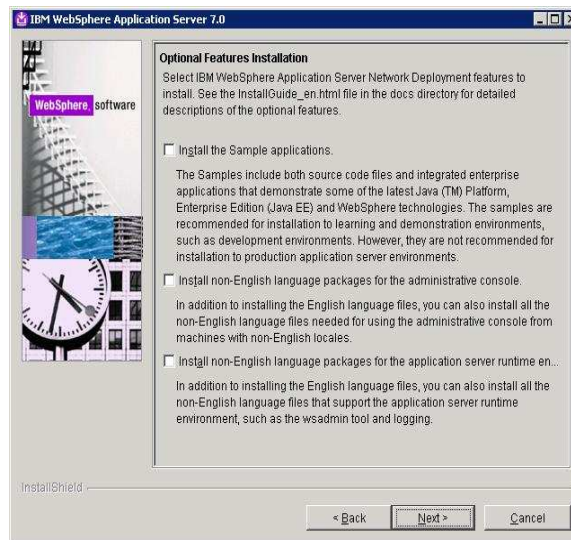
- Verify the that your O/S successfully passes the “System Prerequisites Check”
- Then click “Next”



Verify that your O/S successfully passes the “System Prerequisites Check.” Then click “Next.”

## WebSphere Application Server V7- Optional features installation screen

- Do not install any optional feature
- Then click “Next”

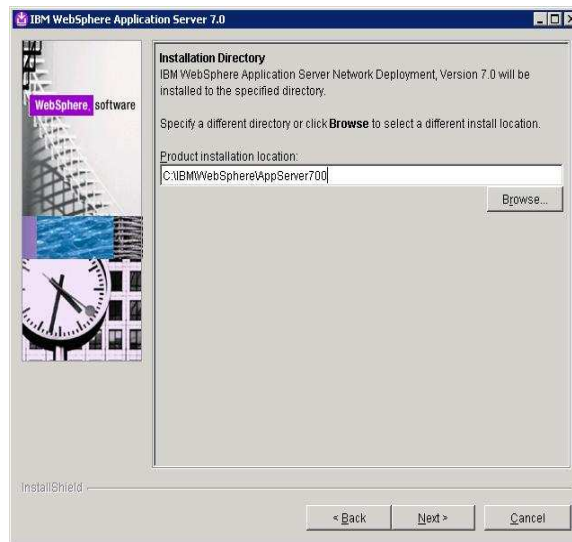


Do not install any optional feature. Then click “Next.”



## WebSphere Application Server V7– Installation directory screen

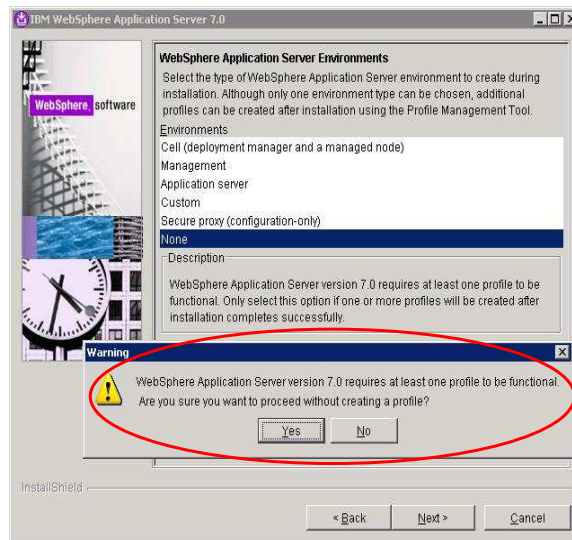
- Select the directory path where you want to install your WebSphere Application Server V7
- Then click “Next”



Select the directory path where you want to install your WebSphere Application Server V7. Then click “Next”

## WebSphere Application Server V7– WebSphere Application Server environments screen

- Select “None” off the “environments” selection
- When the message pop-up opens asking whether you are sure you want to proceed without creating a profile, click “Yes“
- Then click “Next”



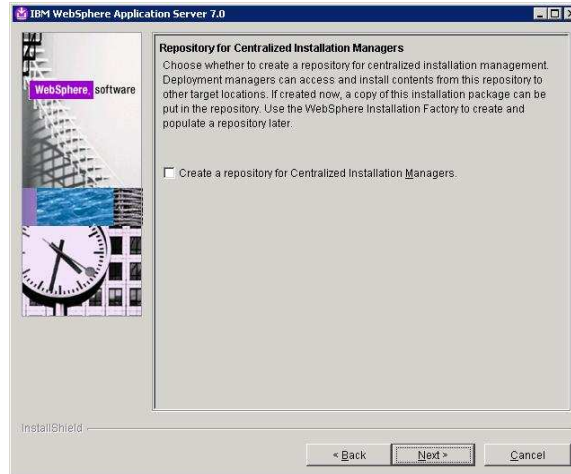
Installing WebSphere Application Server Version 7

© 2012 IBM Corporation

Select “None” off the “environments” selection. When the message pop-up opens asking whether you are sure you want to proceed without creating a profile, click “Yes.” Then click “Next.”

## WebSphere Application Server V7– Repository for centralized installation managers screen

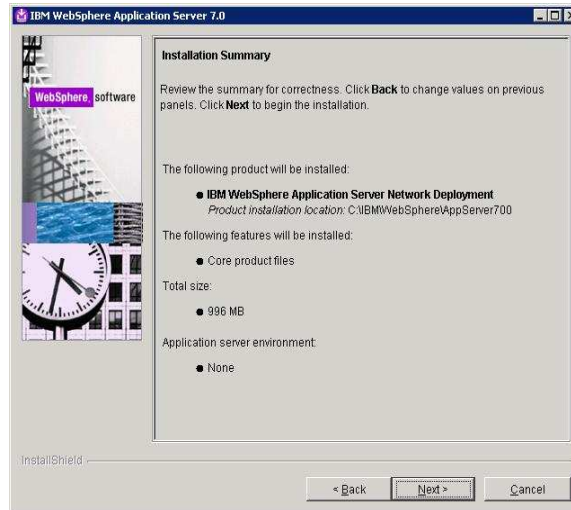
- Do not create a repository for centralized installation managers
- Then click “Next”



Do not create a repository for centralized installation managers. Then click “Next”

## WebSphere Application Server V7– Installation summary screen

- Review the selections you made in the “Installation Summary”
- If necessary click the “Back” button to change any incorrect setting
- Then click “Next”



Review the selections you made in the “Installation Summary.” If necessary click the “Back” button to change any incorrect setting. Then click “Next.”

## WebSphere Application Server V7– Installation results screen

- Verify that the WebSphere Application Server V7 installation results is “Success”
- Do not create a new WebSphere Application Server profile using the Profile Management Tool
- Then click “Finish”



Installing WebSphere Application Server Version 7

© 2012 IBM Corporation

Verify that the WebSphere Application Server V7 installation results is “Success.” Do not create a new WebSphere Application Server profile using the Profile Management Tool. Then click “Finish.”



## Feedback

Your feedback is valuable

You can help improve the quality of IBM Education Assistant content to better meet your needs by providing feedback.

- Did you find this module useful?
- Did it help you solve a problem or answer a question?
- Do you have suggestions for improvements?

Click to send email feedback:

[mailto:iea@us.ibm.com?subject=Feedback\\_about\\_WPGV621\\_WASV7\\_Installation.ppt](mailto:iea@us.ibm.com?subject=Feedback_about_WPGV621_WASV7_Installation.ppt)

This module is also available in PDF format at: [..\\WPGV621\\_WASV7\\_Installation.pdf](..\\WPGV621_WASV7_Installation.pdf)

You can help improve the quality of IBM Education Assistant content by providing feedback.



## Trademarks, disclaimer, and copyright information

IBM, the IBM logo, ibm.com, System p, and WebSphere are trademarks or registered trademarks of International Business Machines Corp., registered in many jurisdictions worldwide. Other product and service names might be trademarks of IBM or other companies. A current list of other IBM trademarks is available on the web at "[Copyright and trademark information](http://www.ibm.com/legal/copytrade.shtml)" at <http://www.ibm.com/legal/copytrade.shtml>

THE INFORMATION CONTAINED IN THIS PRESENTATION IS PROVIDED FOR INFORMATIONAL PURPOSES ONLY. WHILE EFFORTS WERE MADE TO VERIFY THE COMPLETENESS AND ACCURACY OF THE INFORMATION CONTAINED IN THIS PRESENTATION, IT IS PROVIDED "AS IS" WITHOUT WARRANTY OF ANY KIND, EXPRESS OR IMPLIED. IN ADDITION, THIS INFORMATION IS BASED ON IBM'S CURRENT PRODUCT PLANS AND STRATEGY, WHICH ARE SUBJECT TO CHANGE BY IBM WITHOUT NOTICE. IBM SHALL NOT BE RESPONSIBLE FOR ANY DAMAGES ARISING OUT OF THE USE OF, OR OTHERWISE RELATED TO, THIS PRESENTATION OR ANY OTHER DOCUMENTATION. NOTHING CONTAINED IN THIS PRESENTATION IS INTENDED TO, NOR SHALL HAVE THE EFFECT OF, CREATING ANY WARRANTIES OR REPRESENTATIONS FROM IBM (OR ITS SUPPLIERS OR LICENSORS), OR ALTERING THE TERMS AND CONDITIONS OF ANY AGREEMENT OR LICENSE GOVERNING THE USE OF IBM PRODUCTS OR SOFTWARE.

© Copyright International Business Machines Corporation 2012. All rights reserved.

© 2012 IBM Corporation