



IBM Software Group

IBM WebSphere Partner Gateway 6.2

CPP/CPA editor



@business on demand.

© 2009 IBM Corporation
Updated February 13, 2009

CPP/CPA editor is introduced as a new feature in WebSphere® Partner Gateway V6.2

Section

Overview of CPP/CPA editor



This next section will discuss an overview of CPP/CPA editor.

Overview of CPP/CPA editor

- What is CPP/CPA editor
 - ▶ It is an editor, which helps you in creating and modifying CPP/CPA
- How one can invoke CPP/CPA editor
 - ▶ CPP/CPA editor is delivered as an eclipse plug-in. You need to extract the plug-in into any of the eclipse frameworks to make use of the editor. After extracting the plug-in, you have to open the eclipse workspace (recommended eclipse framework is WebSphere integration developer)
- Is CPP/CPA editor packed with WebSphere Partner Gateway
 - ▶ Yes, it is packed with WebSphere Partner Gateway and is available in development kits/tools > delivery image folder



CPP/CPA is an editor that helps you in creating and modifying existing CPP/CPA. It is delivered as an eclipse plug-in and is packed with WebSphere Partner Gateway. It is available under development kits and tools of delivery image folder.

Overview of CPP/CPA editor

- What is required to make use of CPP/CPA editor?
 - ▶ Any eclipse framework with SWT libraries supporting 3.2 or above
 - ▶ Recommended eclipse framework is WebSphere Integration Developer 6.1 or above
 - ▶ Read the instructions to extract the CPP/CPA plug-in to the right directory



You will take a look at the preparatory activities before using CPP/CPA editor. You need to have eclipse framework with SWT libraries supporting 3.2 or above.

Section

Features supported



This presentation will now discuss the features supported by the CPP/CPA editor.

Features

- Creating CPP/CPA from scratch
- Editing CPP/CPA from scratch
- Creating CPA by merging existing CPPs
- Schema validation for CPP/CPA
- Content validation for pages/tabs while moving to next page/tab or during file save operation
- Auto saving of the file while closing the editor

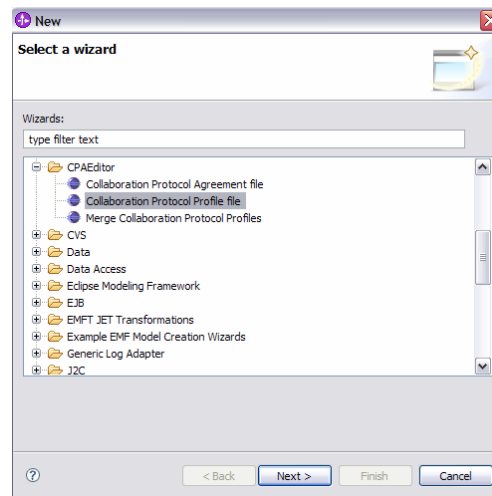


This editor supports creation and modification of CPP/CPA documents and creation of CPA by merging two CPPs.

Editor supports schema validation for CPP/CPA automatically on save. It supports content validation and displays the validation errors in a separate window so that you can rectify the problems.

How to create CPP/CPA document

- After extracting CPP/CPA editor plug-in to appropriate eclipse framework, open the eclipse framework with workspace to persist the document



Here, you will see how to make use of CPP/CPA editor for creating a new document. This editor populates CPP/CPA documents based on packed templates.

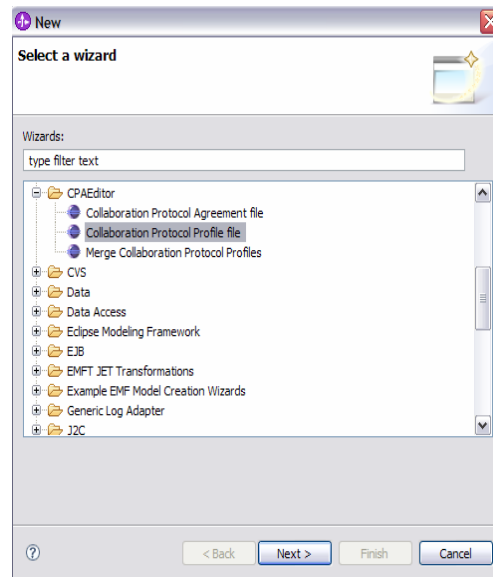
You are expected to modify the values as required.

How to create CPP/CPA document

- Click File > New > Other option
- In the CPAAEditor category, select Collaboration Protocol Profile / Collaboration Protocol Agreement option
- Based on the above option, a wizard will guide you through the approach to collect basic details to create appropriate document

How to create CPAs from CPPs

- Click File > New > Other option
- In CPAAEditor category, select Merge Collaboration Protocol Profile option



Here, you are going to see how to make use of CPP/CPA editor for creating CPA from two CPPs that already exist.

Select Merge Collaboration Protocol Profile wizard and provide existing CPPs as input.

The merged CPA is generated.

How one can create CPA from CPPs?

- A wizard will guide you through the approach to collect inputs of collaboration protocol profiles
- Based on the guideline of auto merging of collaboration protocol profile, collaboration protocol agreement is generated

Section

Troubleshooting



The next slide will discuss at few tips and tricks while working with CPP/CPA editor.

Troubleshooting

- Why options are not displayed even after extracting the plug-in under eclipse framework plug-in directory?
 - ▶ You have to reopen the eclipse workspace after extraction of plug-in.
- Why my incorrect data is not stored?
 - ▶ In case incorrect reference data is entered, validation error is thrown and it is not persisted



Here you will see a few tips for troubleshooting.

Feedback

Your feedback is valuable

You can help improve the quality of IBM Education Assistant content to better meet your needs by providing feedback.

- Did you find this module useful?
- Did it help you solve a problem or answer a question?
- Do you have suggestions for improvements?

Click to send e-mail feedback:

mailto:iea@us.ibm.com?subject=Feedback_about_WPG62_CPPEditor.ppt

This module is also available in PDF format at: [../WPG62_CPPEditor.pdf](..\\WPG62_CPPEditor.pdf)



You can help improve the quality of IBM Education Assistant content by providing feedback.

Trademarks, copyrights, and disclaimers

IBM, the IBM logo, ibm.com, and the following terms are trademarks or registered trademarks of International Business Machines Corporation in the United States, other countries, or both:

WebSphere

If these and other IBM trademarked terms are marked on their first occurrence in this information with a trademark symbol (® or ™), these symbols indicate U.S. registered or common law trademarks owned by IBM at the time this information was published. Such trademarks may also be registered or common law trademarks in other countries. A current list of other IBM trademarks is available on the Web at "Copyright and trademark information" at <http://www.ibm.com/legal/copytrade.shtml>

Other company, product, or service names may be trademarks or service marks of others.

Product data has been reviewed for accuracy as of the date of initial publication. Product data is subject to change without notice. This document could include technical inaccuracies or typographical errors. IBM may make improvements or changes in the products or programs described herein at any time without notice. Any statements regarding IBM's future direction and intent are subject to change or withdrawal without notice, and represent goals and objectives only. References in this document to IBM products, programs, or services does not imply that IBM intends to make such products, programs or services available in all countries in which IBM operates or does business. Any reference to an IBM Program Product in this document is not intended to state or imply that only that program product may be used. Any functionally equivalent program, that does not infringe IBM's intellectual property rights, may be used instead.

THE INFORMATION PROVIDED IN THIS DOCUMENT IS DISTRIBUTED "AS IS" WITHOUT ANY WARRANTY, EITHER EXPRESS OR IMPLIED. IBM EXPRESSLY DISCLAIMS ANY WARRANTIES OF MERCHANTABILITY, FITNESS FOR A PARTICULAR PURPOSE OR NON-INFRINGEMENT. IBM shall have no responsibility to update this information. IBM products are warranted, if at all, according to the terms and conditions of the agreements (for example, IBM Customer Agreement, Statement of Limited Warranty, International Program License Agreement, etc.) under which they are provided. Information concerning non-IBM products was obtained from the suppliers of those products, their published announcements or other publicly available sources. IBM has not tested those products in connection with this publication and cannot confirm the accuracy of performance, compatibility or any other claims related to non-IBM products.

IBM makes no representations or warranties, express or implied, regarding non-IBM products and services.

The provision of the information contained herein is not intended to, and does not, grant any right or license under any IBM patents or copyrights. Inquiries regarding patent or copyright licenses should be made, in writing, to:

IBM Director of Licensing
IBM Corporation
North Castle Drive
Armonk, NY 10504-1785
U.S.A.

Performance is based on measurements and projections using standard IBM benchmarks in a controlled environment. All customer examples described are presented as illustrations of how those customers have used IBM products and the results they may have achieved. The actual throughput or performance that any user will experience will vary depending upon considerations such as the amount of multiprogramming in the user's job stream, the I/O configuration, the storage configuration, and the workload processed. Therefore, no assurance can be given that an individual user will achieve throughput or performance improvements equivalent to the ratios stated here.

© Copyright International Business Machines Corporation 2009. All rights reserved.

Note to U.S. Government Users - Documentation related to restricted rights-Use, duplication or disclosure is subject to restrictions set forth in GSA ADP Schedule Contract and IBM Corp.

