

Install and configure e-mail server

What this exercise is about	1
What you should be able to do	1
Introduction	1
Part 1: Install hMailServer	2
Part 2: Configure hMailServer	7
What you did in this exercise	13

What this exercise is about

The objective of this lab is to provide you with an understanding of installation and configuration of the hMailServer, an open source e-Mail server for Microsoft Windows.

What you should be able to do

At the end of this lab you should be able to:

- Install hMailServer
- Create users in hMailServer

Introduction

You will install the hMailServer and configure it to create users as a prerequisite for the e-Mail Adapter Inbound and Outbound labs.

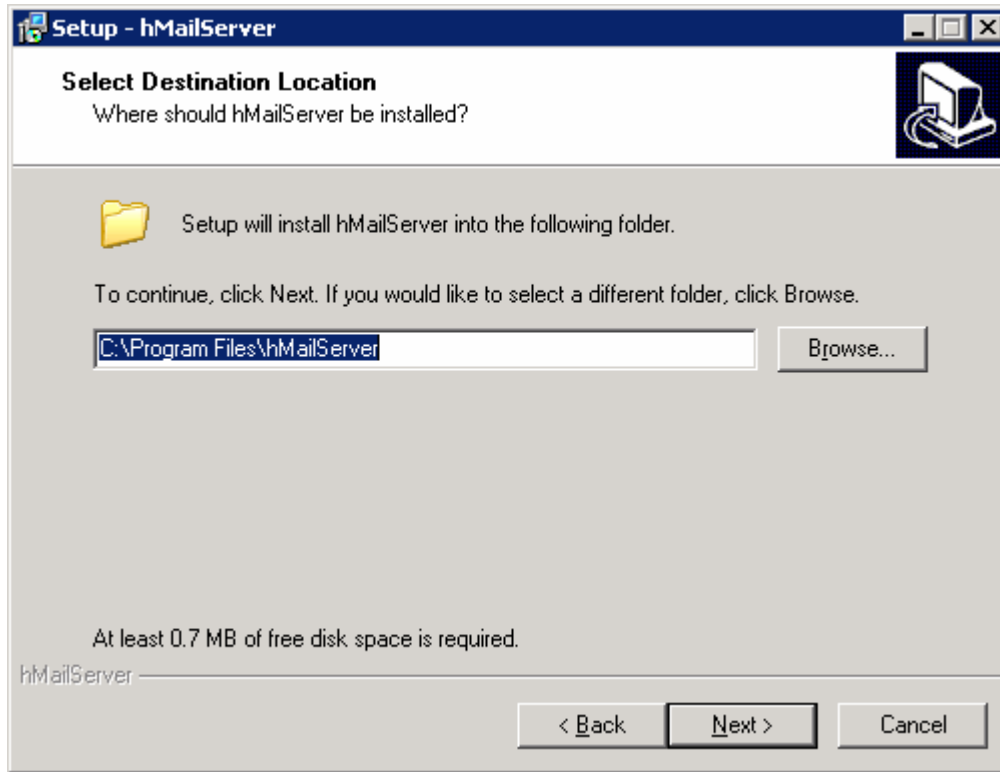
Part 1: Install hMailServer

This part of the lab describes the steps for installing the hMailServer and then guides you with the configuration setup.

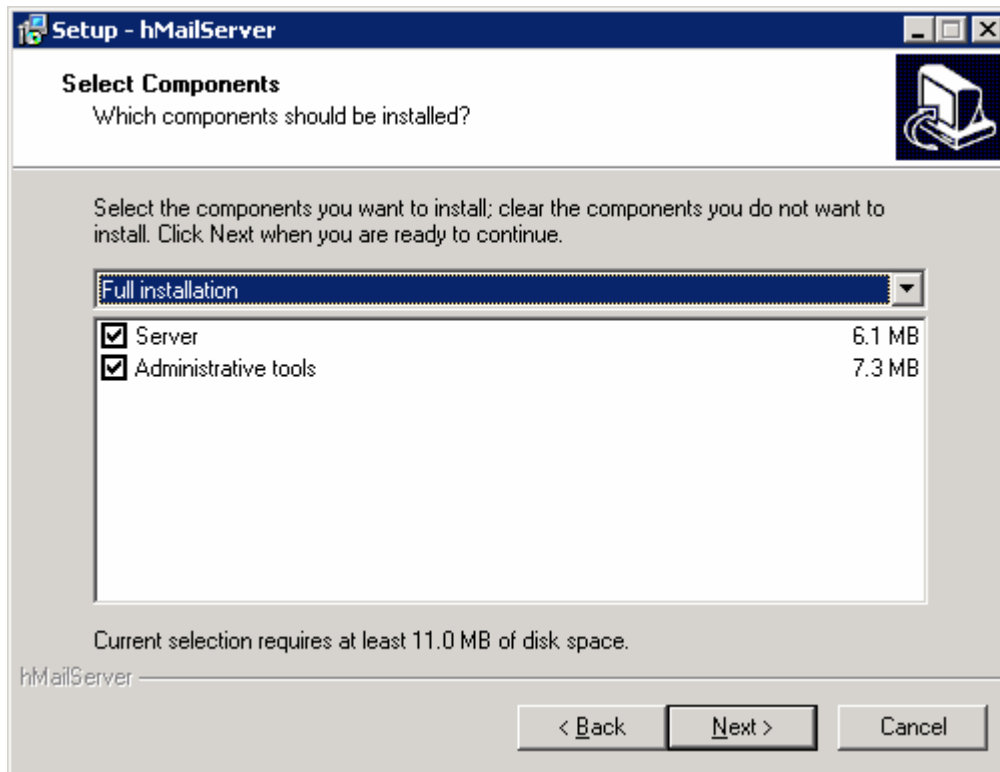
1. Go to the <http://www.hmailserver.com/?page=download> and download the latest stable binaries for the hMailServer onto your local machine. Double click on the downloaded **.exe** file to start the installation of the hMailServer. Depending upon the exe file that you install, there might be some changes in the screens if you are using different/late version of hMailServer.
2. Follow the instructions on the Welcome screen and click **Next**



3. Accept the default value for the destination installation location and click **Next**

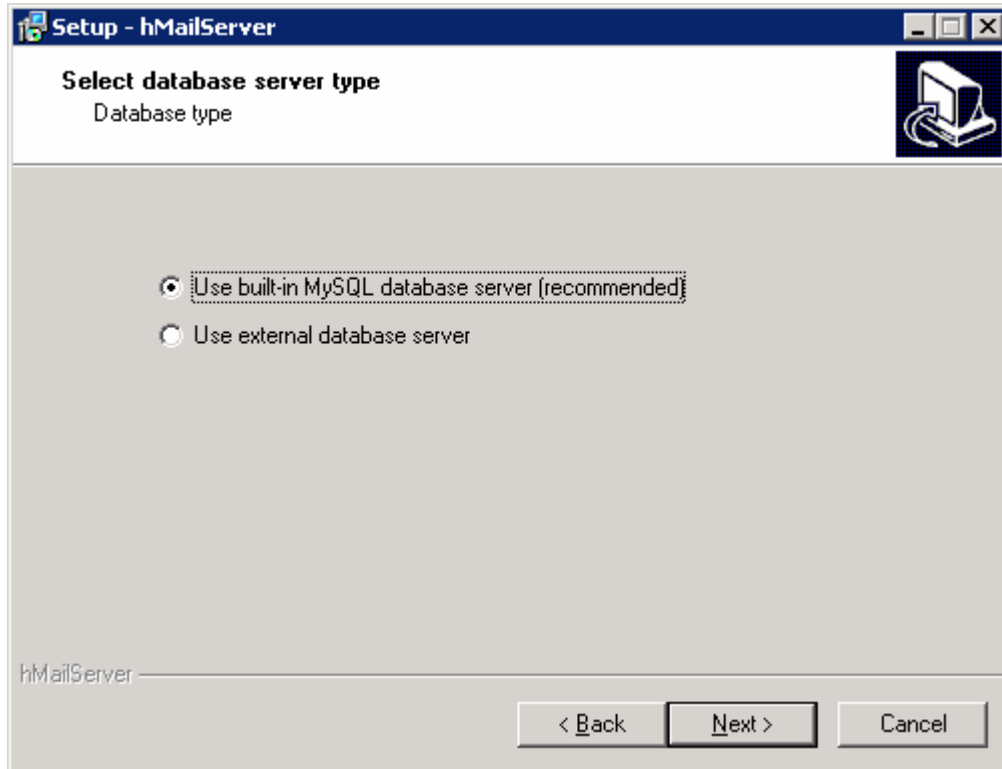


- 4. Ensure that the **Full Installation** is selected and the **Server** and **Administrative tools** components are checked for installation and click **Next**

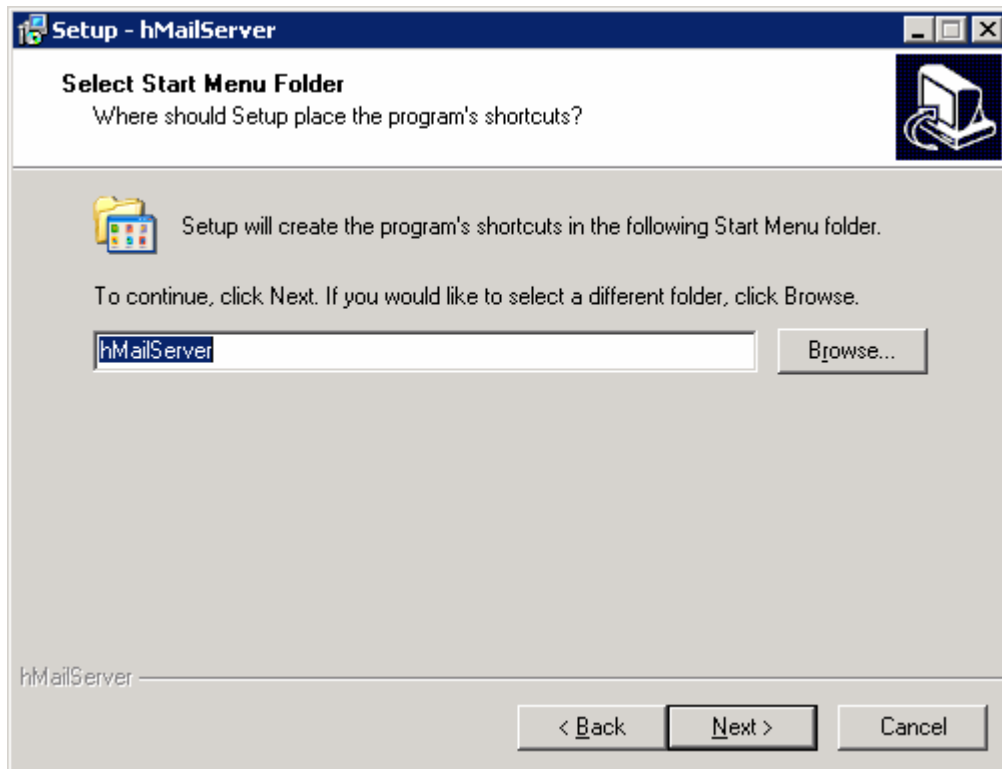


IBM WEBSHERE ADAPTER 6.0.2 – LAB EXERCISE

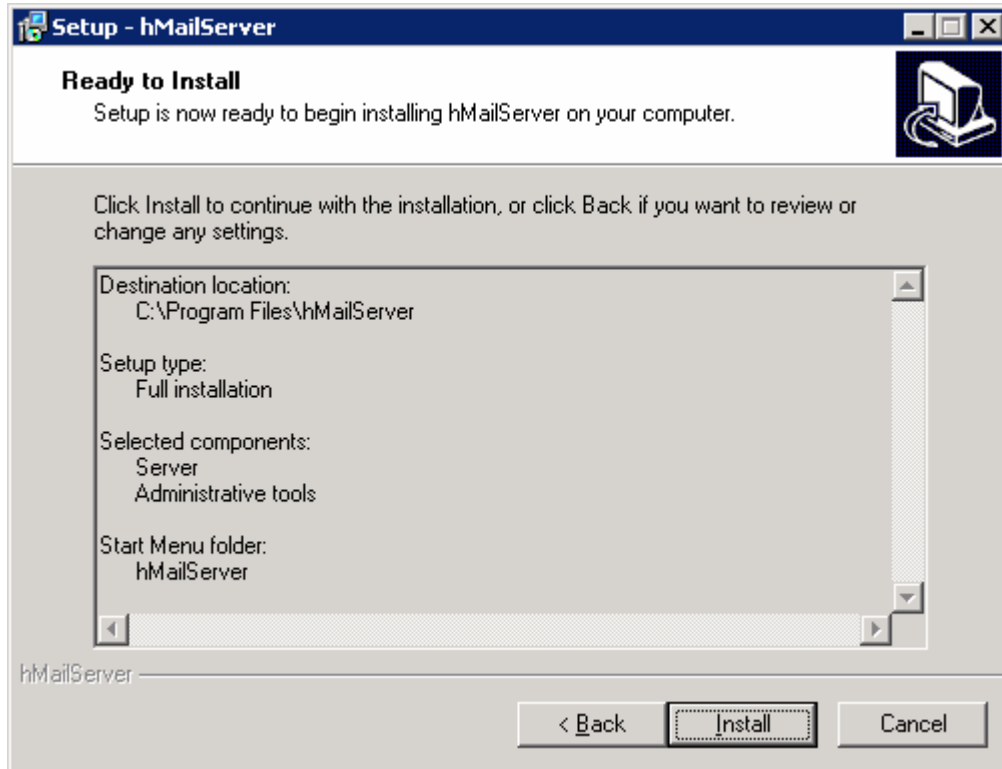
5. Make sure that the radio button next to **Use built-in MYSQL database server (recommended)** is selected and click **Next**



6. Click **Next** on the following screen to accept the default start menu folder



- ____ 7. Verify and click **Finish** on the summary screen. The installation takes less than a minute depending upon the system resources



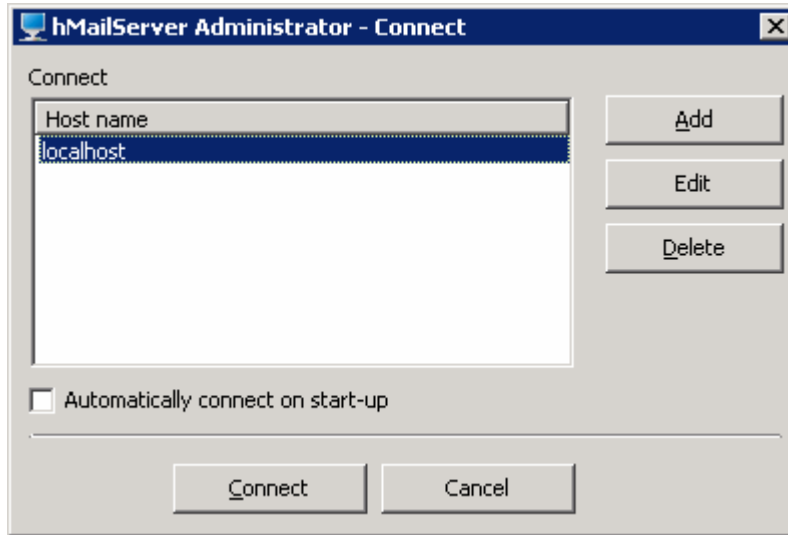
- ____ 8. Ensure that the check box next to **Run hMailServer Administrator** is selected and click **Finish** to exit the setup

IBM WEBSHERE ADAPTER 6.0.2 – LAB EXERCISE

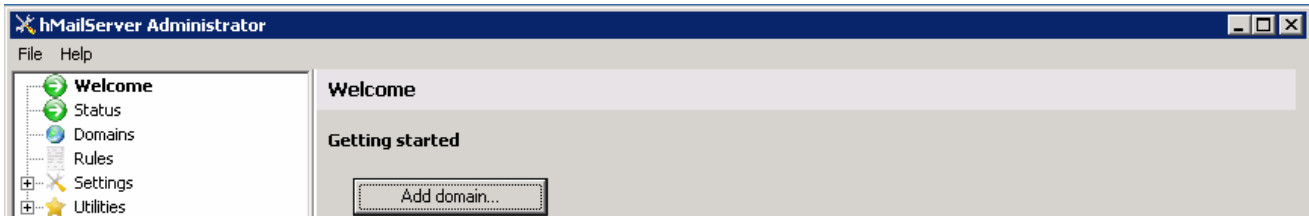


Part 2: Configure hMailServer

1. Select **Start > Programs > hMailServer > hMailServer Administrator** to open Administrator-Connect window. If you have checked the box Run hMailServer Administrator in the previous step, you can skip this step
2. Ensure that the Host name **localhost** is selected and click **Connect**. If you don't see it already listed, click Add and enter **localhost** for the Name field

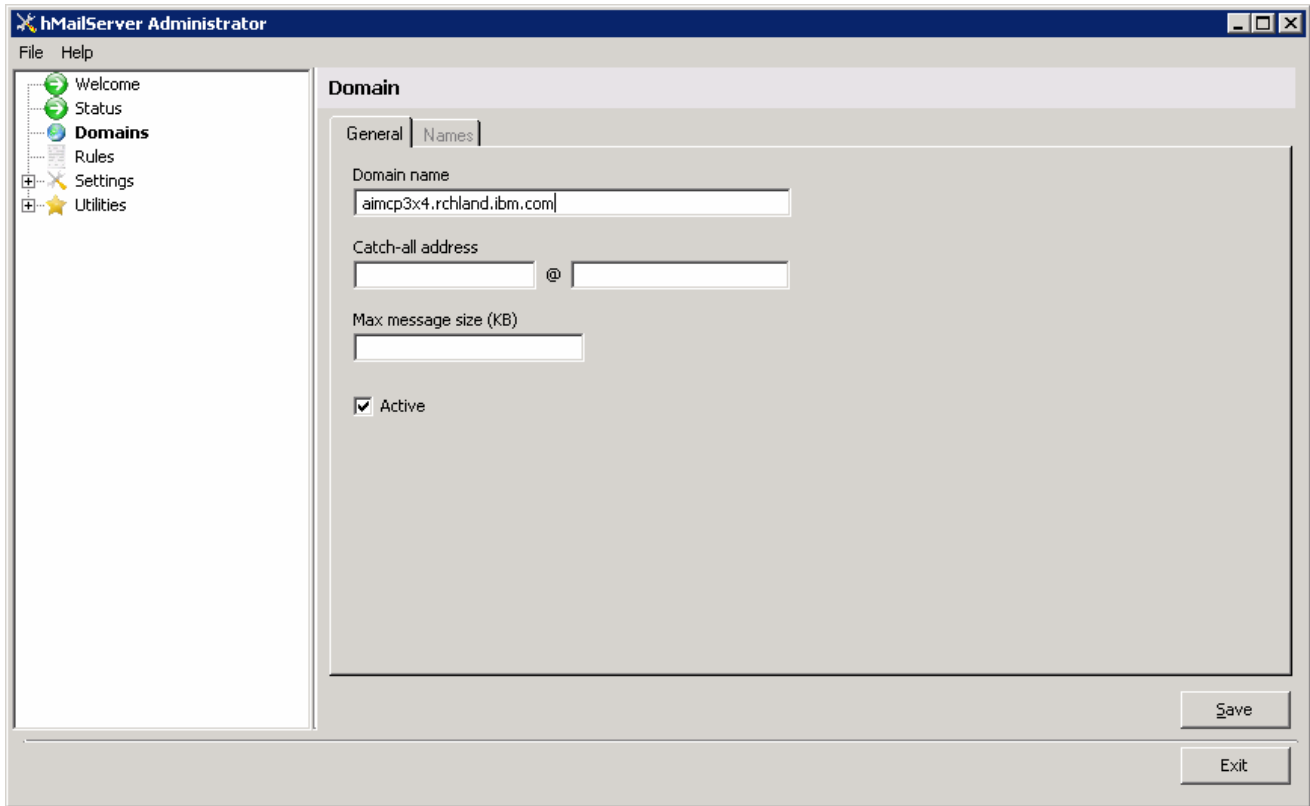


The hMailServer Administrator window will be opened.

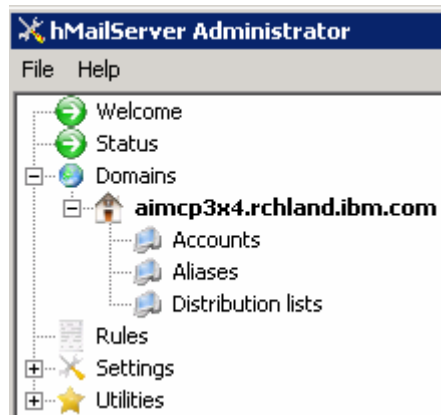


3. Click on the **Add domain...** button and the Domain screen will be opened
4. Enter your machine name for the **Domain name** and click **Save**

IBM WEBSHERE ADAPTER 6.0.2 – LAB EXERCISE

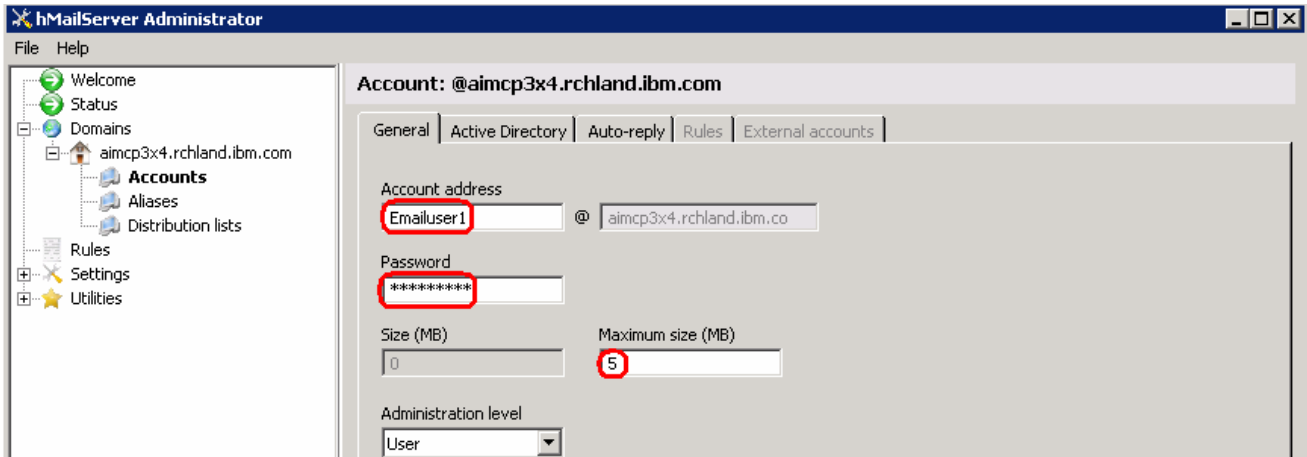


You will now see the domain listed created under Domains in the left pane window



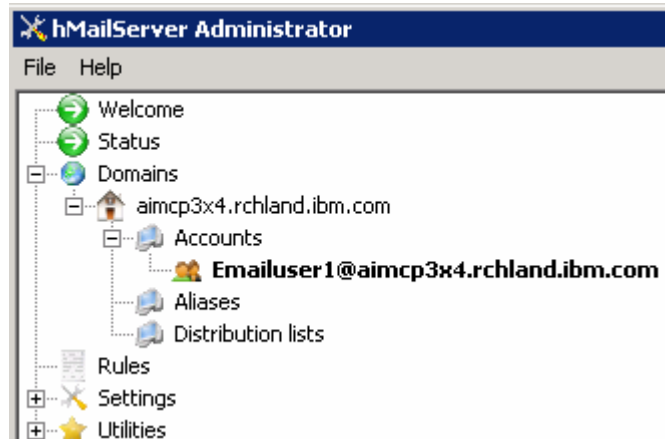
- ___ 5. Click on the **Add account...** button from the right side window, **Account: @<domain name>** will be opened in your right side of the window
- ___ 6. Enter the following under General tab:
 - a. Account address: **Emailuser1**
 - b. Password: **password1**
 - c. Maximum size (MB): **5**

IBM WEBSHERE ADAPTER 6.0.2 – LAB EXERCISE – **IBM CONFIDENTIAL**



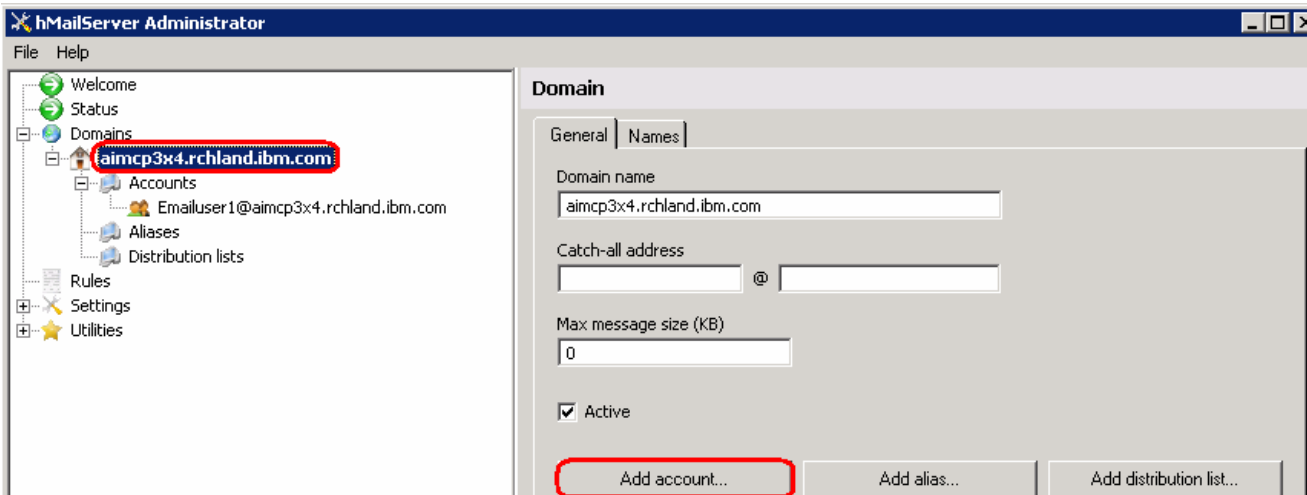
7. Click **Save** at the bottom

You will now see the account created under **Domains > your domain > Accounts** as shown below:



8. Create another user

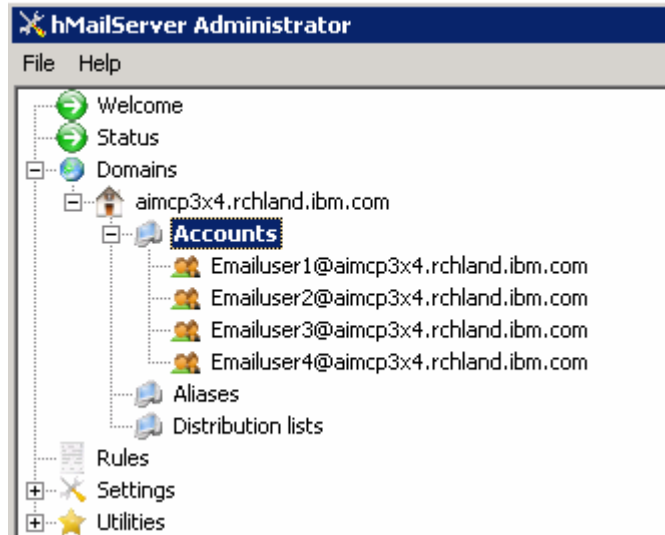
- d. Select **Domains > your_domain** on the left. The Domain window will be opened on to your right side. Click on **Add account...**



IBM WEBSHERE ADAPTER 6.0.2 – LAB EXERCISE

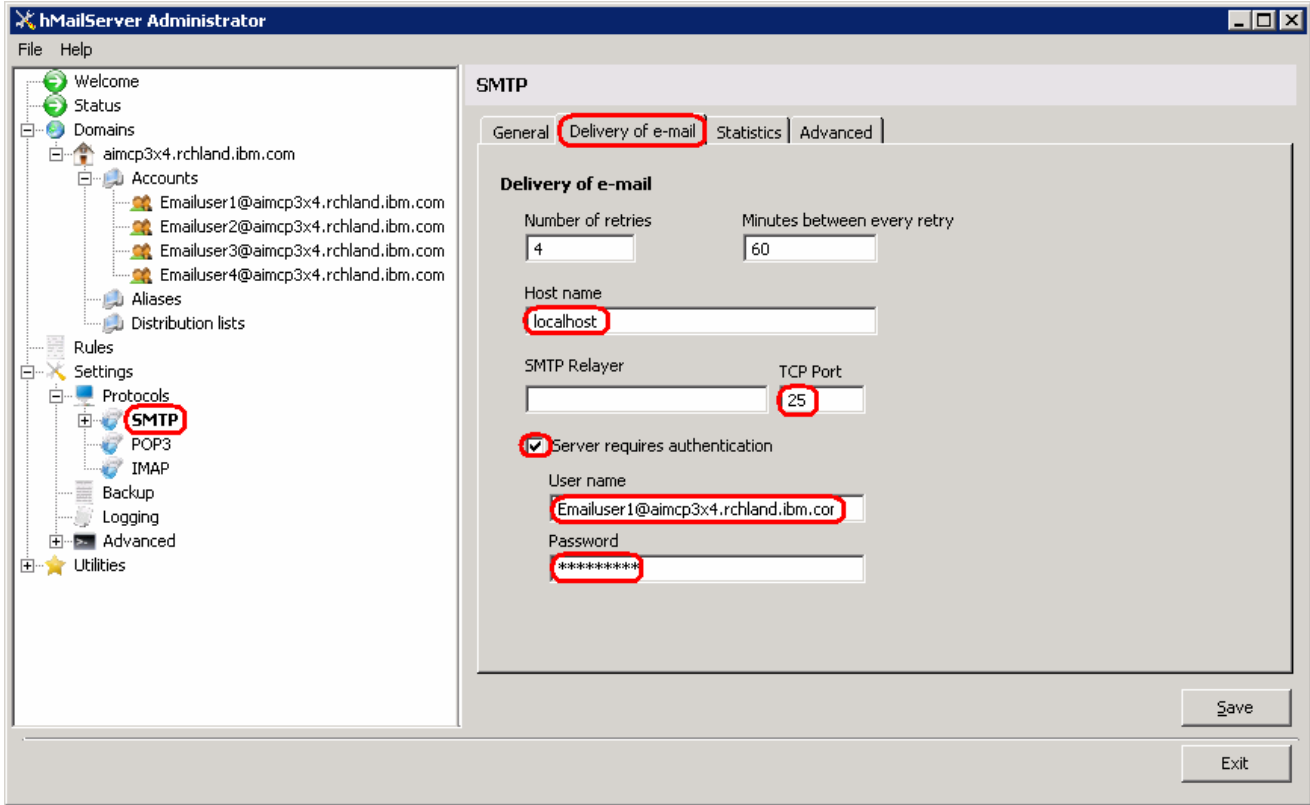
- e. Enter the following under General tab of Account: @<your_domain> window:
 - i. Account address: **Emailuser2**
 - ii. Password: **password2**
 - iii. Maximum size (MB): **5**
- f. Click **Save** at the bottom
- g. Repeat the above step and create two more user accounts: **Emailuser3, Emailuser4**

You will now see the four user accounts as shown below:

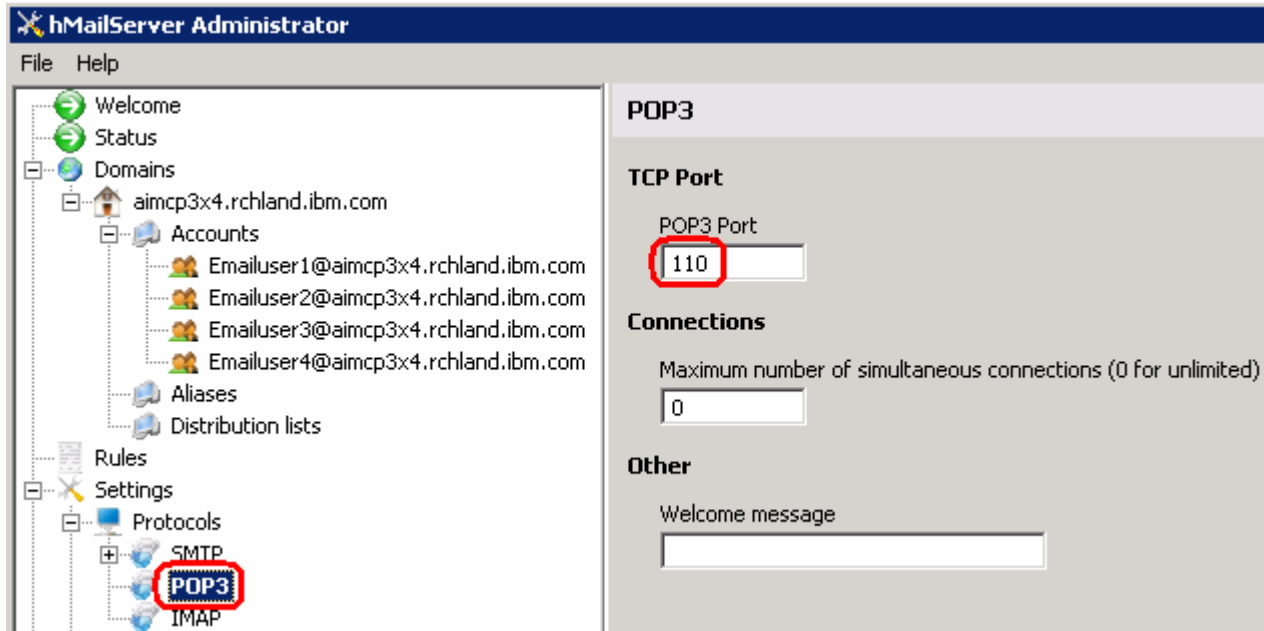


- ___ 9. Select **Settings > Protocols > SMTP** on the left pane to open SMTP window on the right side
- ___ 10. Select the **Delivery of e-mail** tab and see that the **TCP Port** is 25 (25 by default). If that port number is already being used, then give some other unused port number and give the same for the SMTP Port in the **Advanced** tab of SMTP window
- ___ 11. Enter **localhost** for **Host name** field
- ___ 12. Select the check box next to **Server requires authentication** and enter the following:
 - h. User name: <user>@<domain_name> (Ex: Emailuser1@aimcp3x4.rchland.ibm.com)
 - i. Password: **password** for the user account (Ex: password1)

IBM WEBSHERE ADAPTER 6.0.2 – LAB EXERCISE – **IBM CONFIDENTIAL**

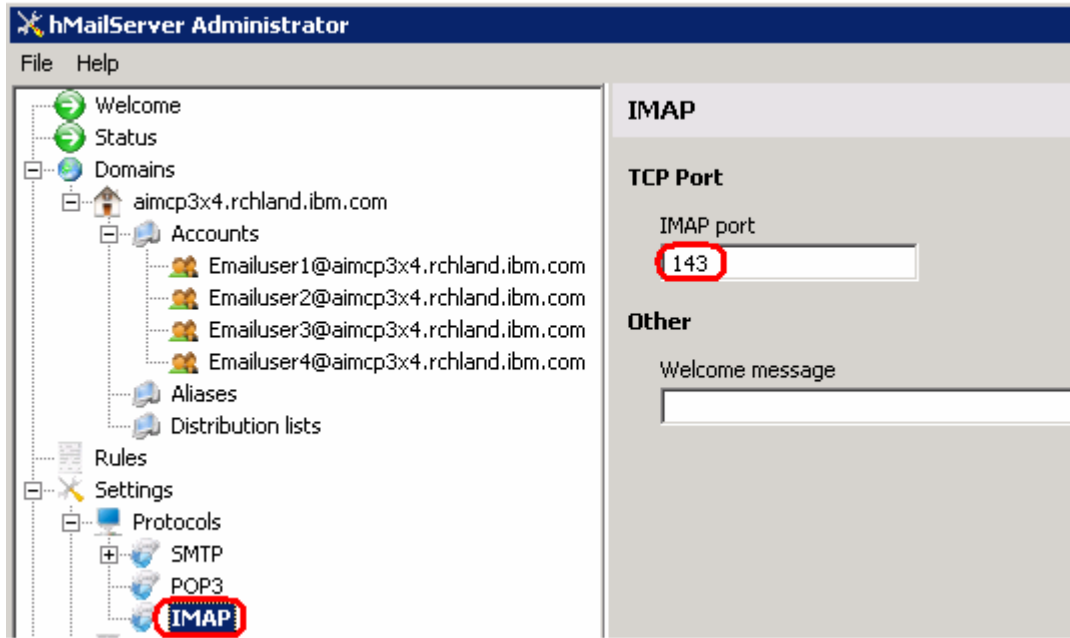


- ___ 13. Click **Save** at the bottom
- ___ 14. Select **Settings > Protocols > POP3** on the left pane and ensure that you use the unused port number for the **POP3 Port** if the default port number **110** is already being used



- ___ 15. Select **Settings > Protocols > IMAP** and ensure that you use the unused port number for the **IMAP port** if the default port number **143** is already being used

IBM WEBSHERE ADAPTER 6.0.2 – LAB EXERCISE



____ 16. Finally hit the **Exit** button to close the **Administrator** window

What you did in this exercise

In this lab, you installed the hMailServer and created four users as a prerequisite for the e-Mail Adapter Inbound and Outbound labs.

This page is left intentionally blank.