



IBM Software Group

WebSphere® Business Modeler Publishing Server V6.0.2

Overview



@business on demand.

© 2006 IBM Corporation
Updated January 5, 2007

This presentation is an overview of the WebSphere Business Modeler Publishing Server Version 6.0.2.

Goals

- Provide an overview of the WebSphere Business Modeler Publishing Server V6.0.2
 - ▶ Relationship to WebSphere Business Modeler
 - ▶ Functionality
 - ▶ Supporting Software Requirements



The goal of this discussion is to provide an overview of the WebSphere Business Modeler Publishing Server V6.0.2. You will learn that the publishing server is very closely linked to the WebSphere Business Modeler and what this relationship is. Additionally, you will learn what the primary capabilities of the WebSphere Business Modeler Publishing Server are, and through the supporting software requirements, get a sense of what it will take to install and support the publishing server.

Agenda

- Introduction
- WebSphere Business Modeler and WebSphere Business Modeler Publishing Server
- Capabilities of the WebSphere Business Modeler Publishing Server
- The Supporting Software.



The agenda outlines the topics that are covered in this discussion.

There is a brief introduction followed by a discussion of the relationship between the WebSphere Business Modeler and WebSphere Business Modeler Publishing Server. Next, an overview of the capabilities provided by the publishing server, then a discussion of the supporting software required for the WebSphere Business Modeler Publishing Server.

Introduction

- What is WebSphere Business Modeler Publishing Server?
 - ▶ Enhances WebSphere Business Modeler by providing a way to publish business processes and related business information to a secure Web site.
 - Supports the development, documentation and dissemination of business process models on an enterprise and worldwide scale.
 - Provides the ability to publish business process models to a portlet-based server, enabling new employees to gain a high-level view of their role in the company and identify tasks they're expected to perform.
 - Allows review and development by multiple subject matter experts simultaneously through a standard internet browser.
 - Facilitates partial or entire publishing through WebSphere Business Modeler for business process modeling projects.
 - Ensures accurate and concise models



The WebSphere Business Modeler Publishing Server compliments the WebSphere Business Modeler by providing a way for a larger community to have access to the business models while they are being developed and after they have been finalized and released.

While the business models are being developed, the business analyst can publish a draft of the model, all of it, or just parts of it, to be reviewed by colleagues. Because the publishing server is a secure Web server application, access to the drafts can be restricted to a select audience that has been given access rights to review and comment on the model. Reviewers can add comments, attach supporting documentation or links or other relevant material.

Once the business model is complete, it can then be published as a released version, to be viewed and referenced by a much wider audience in the business enterprise.

Agenda

- Introduction
- **WebSphere Business Modeler and WebSphere Business Modeler Publishing Server**
- Capabilities of the WebSphere Business Modeler Publishing Server
- The Supporting Software.



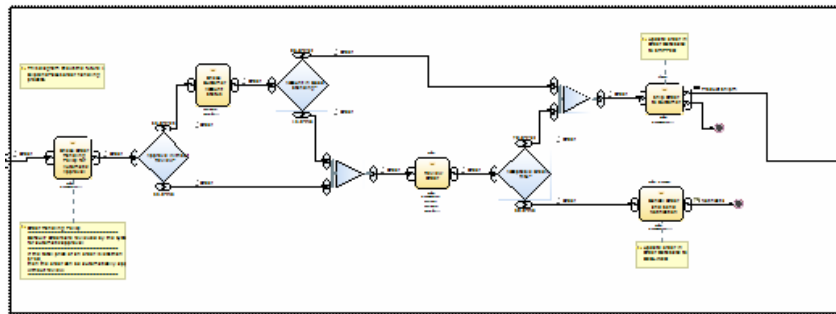
The introduction provides a lot of information.

What is the relationship between the WebSphere Modeler and the WebSphere Business Modeler Publishing Server?

To begin with they are separate products but they work together.

WebSphere Business Modeler

- The WebSphere Business Modeler allows a business analyst to document and simulate business processes for the enterprise.
- A key output of the WebSphere Business Modeler is a diagram of the business process.



Before talking about the WebSphere Business Modeler Publishing Server, a few words are in order regarding the WebSphere Business Modeler.

Developing the business processes is iterative. A business process typically goes through several reviews before it is finalized.

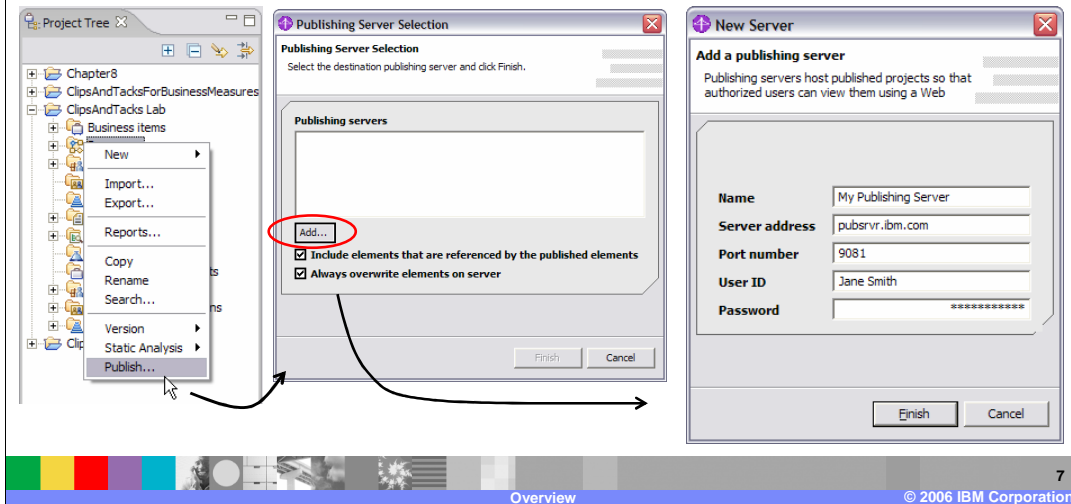
During the review process other members of the organization need to study the business process diagram and return comments.

Once the business process has been approved and finalized it then needs to be visible and accessible for reference by a broader audience in the organization.

The WebSphere Business Modeler Publishing Server fulfills this need by providing a secure Web server and data repository to display and manage the published models, which can then be accessed by the members of the business enterprise.

Connecting to the Publishing Server

- The Business Modeler provides an option for publishing to the WebSphere Business Modeler Publishing Server.



From the WebSphere Business Modeler, the business analyst selects the publish option from the context menu and can then select the publishing server from a list of previously defined servers.

If the publishing server is not in the list, pressing the add button will invoke the New Server dialog where the connection information can be entered.

Agenda

- Introduction
- WebSphere Business Modeler and WebSphere Business Modeler Publishing Server
- **Capabilities of the WebSphere Business Modeler Publishing Server**
- The Supporting Software.

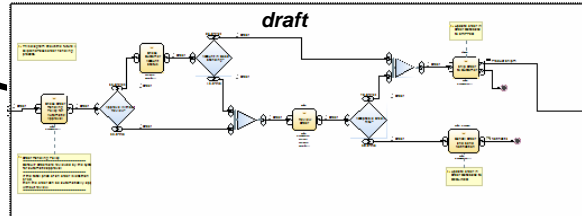


Understanding the need for the publishing server and knowing that the business models originate from the WebSphere Business Modeler sets the stage for the next step, which is to discuss the capabilities of the WebSphere Business Modeler Publishing Server.

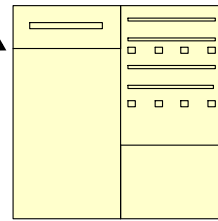
The Publishing Server



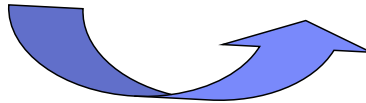
Publishers
**WebSphere
Business Modeler**



A secure, portlet based Web server

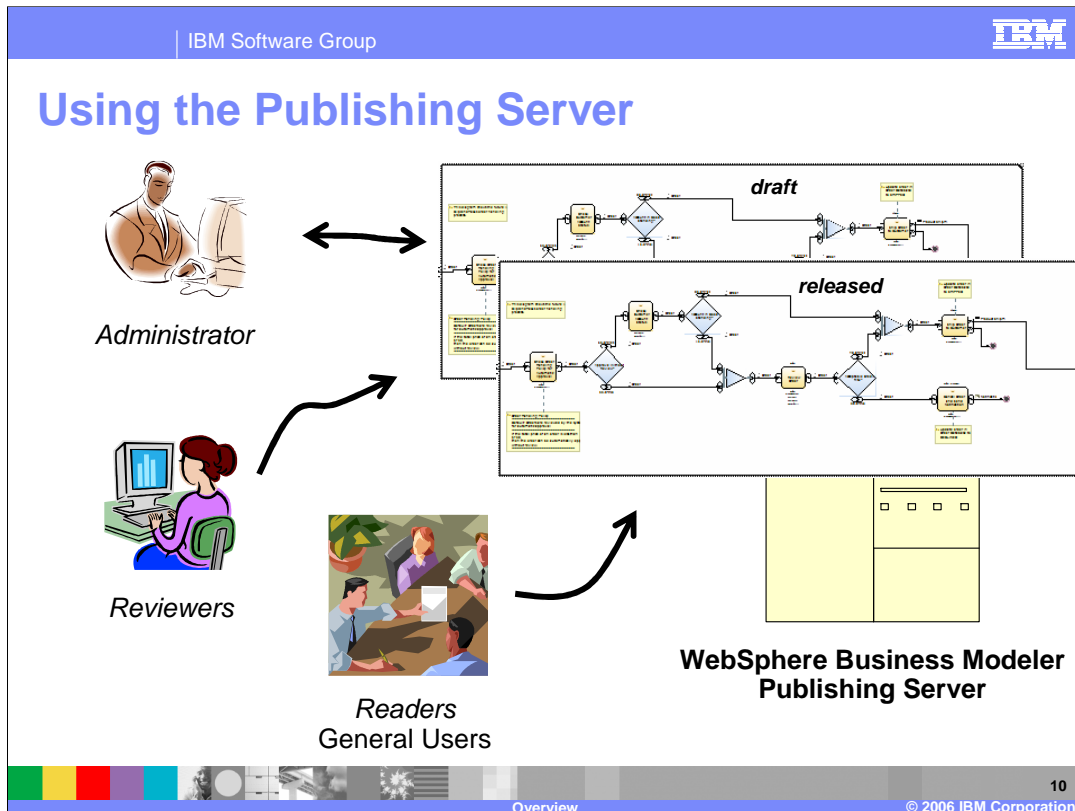


**WebSphere Business Modeler
Publishing Server**



Using the WebSphere Business Modeler, business analysts can publish a draft model of the business process to the publishing server to be reviewed (and commented on) by colleagues.

The publishing server is a secure Web server and therefore only team members with the proper authorization will be able to review and comment on the model.

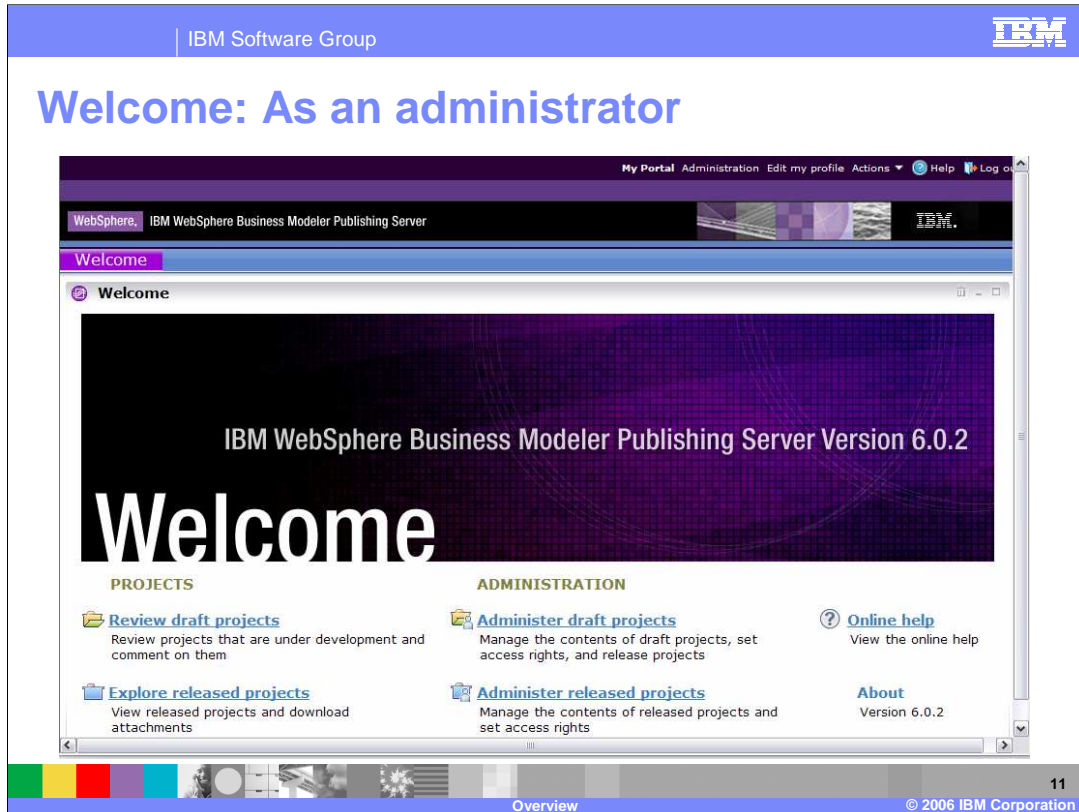


Using the Publishing Server browser client:

Administrators can manage users and access privileges, collate the comments from the reviewers and promote the draft version to a released version when appropriate.

Reviewers can read the draft models and provide comments and feedback which will be collated by the administrator.

Readers can view the released versions as needed to fulfill their job responsibilities.

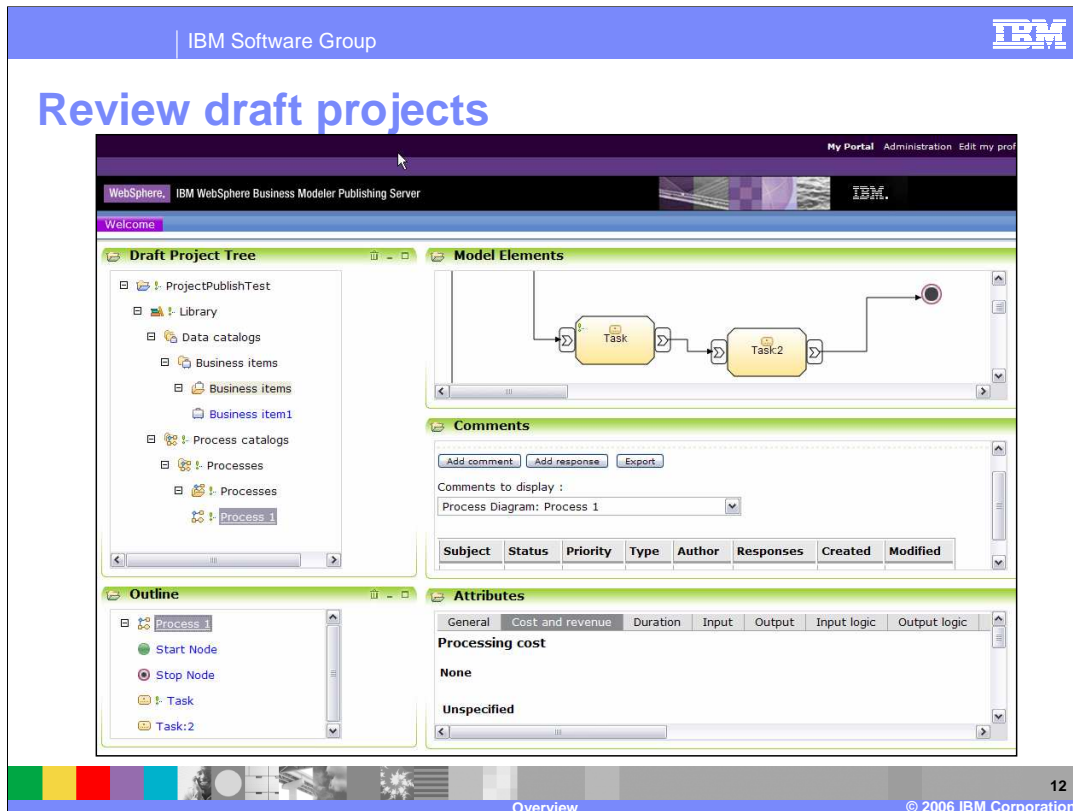


The Welcome page is the main entry point to the WebSphere Business Modeler Publishing Server.

The four primary functions are visible from the Welcome page: review or explore projects or administer draft or released projects.

There is a login prompt before displaying the Welcome page. If the logged-in user does not have administrative privileges, the administrative functions will not be selectable.

Each of these functions are discussed briefly in the next few slides.



Shown here is the screen that is displayed when “Review draft projects” is selected from the Welcome page.

The project tree has been expanded so you can get a sense of the elements that are available for review.

Notice that both the data elements from the Data Catalogs and the business processes from the Process Catalogs are available.

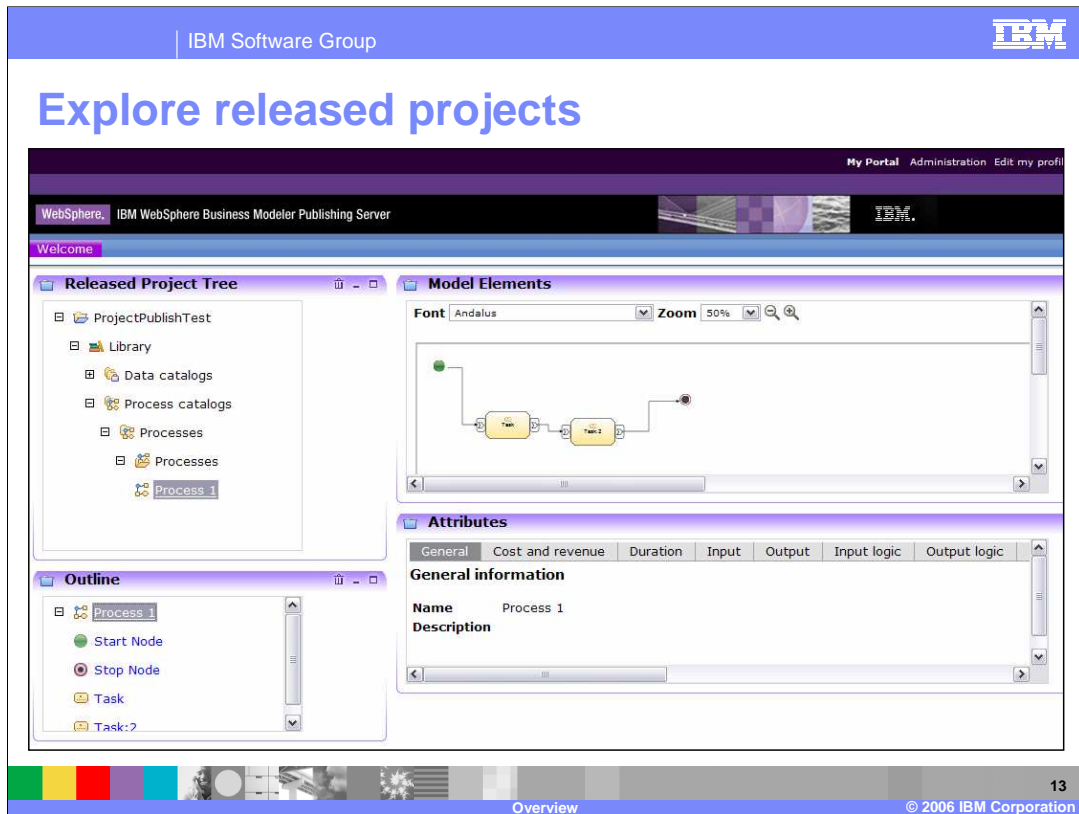
On the right you can see that for the selected business process, there are sections for the model elements, comments and attributes.

Each section can be collapsed and expanded to maximize the viewing area. For the Model Elements section, there is a zoom function that allows you to easily zero in on the area of interest or get the high level overview.

The comments section has an “Add comments” button which will display an input form for adding comments. New comments will be added to the table that is displayed below. The table column headers shown here include Subject, Status, and so on.

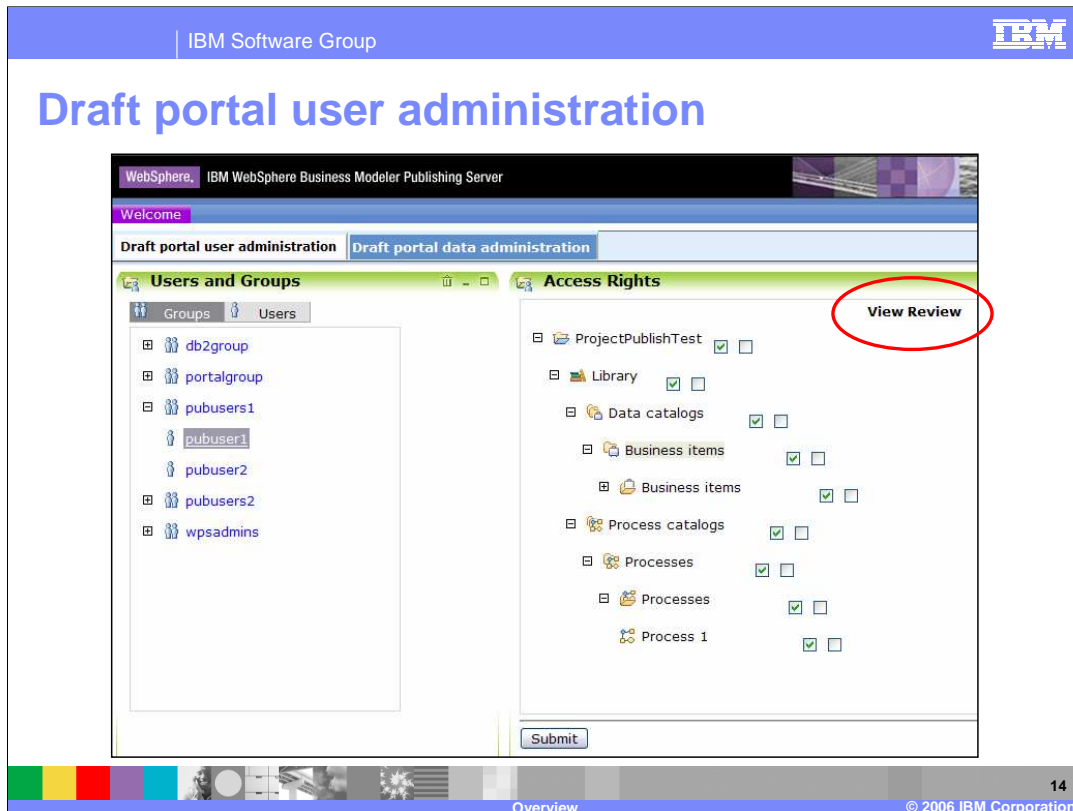
When entering comments, there is also a facility for adding attachments, which is not shown here. The contents of the table and the attachments are available for other reviewers to inspect. A reviewer must have reviewer privileges for the selected business process or element.

The attributes section provides a way for the reviewer to inspect the various attributes associated with a business process or data element.



This is the screen that is displayed when “Review released projects” is selected from the Welcome page.

Note the color change that indicates ‘released’ mode. You will also notice that the comments section is not present. This is because released projects can only be viewed and not commented on.



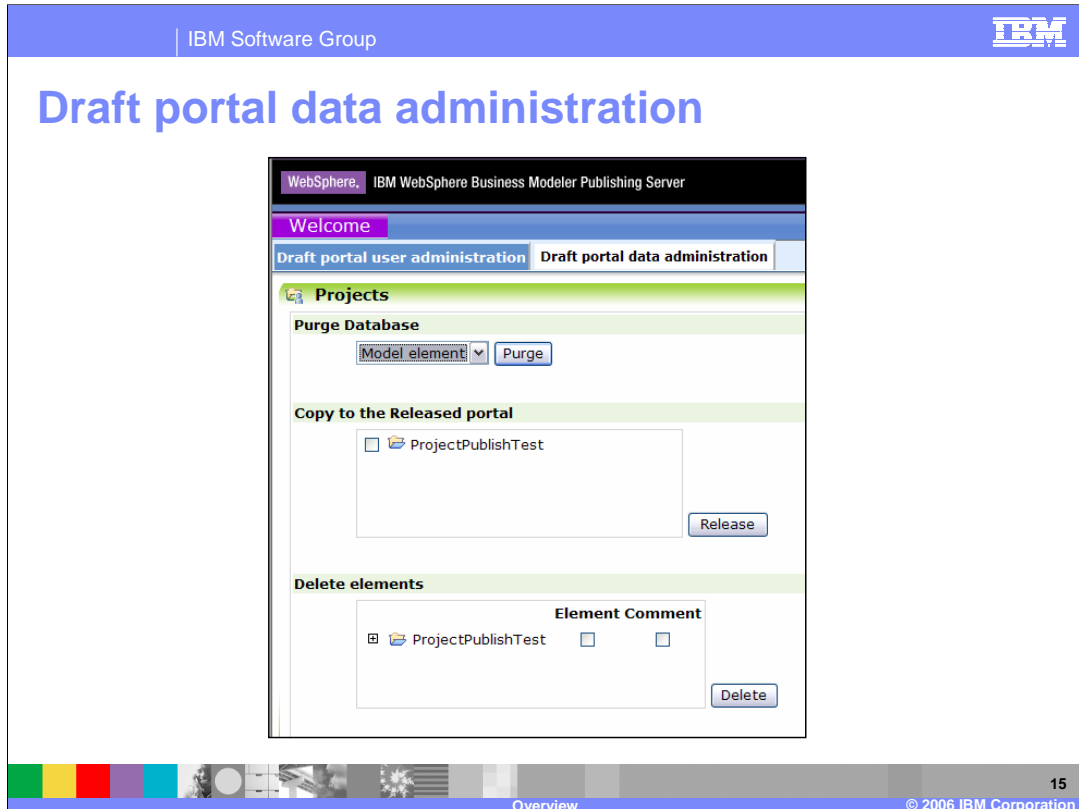
Here is the screen that is displayed when you select “Administer draft projects” from the Welcome page.

To access the administrative functions you must have administrative privileges.

Notice that there are two different tabbed views to work with, one for user administration and another for data administration. In this picture the “Draft portal user administration” tab is selected and from here the administrator can assign access privileges to individual members of a group or to the entire group.

Groups and users are defined outside of the WebSphere Business Modeler Publishing Server using the appropriate LDAP interfaces and utilities.

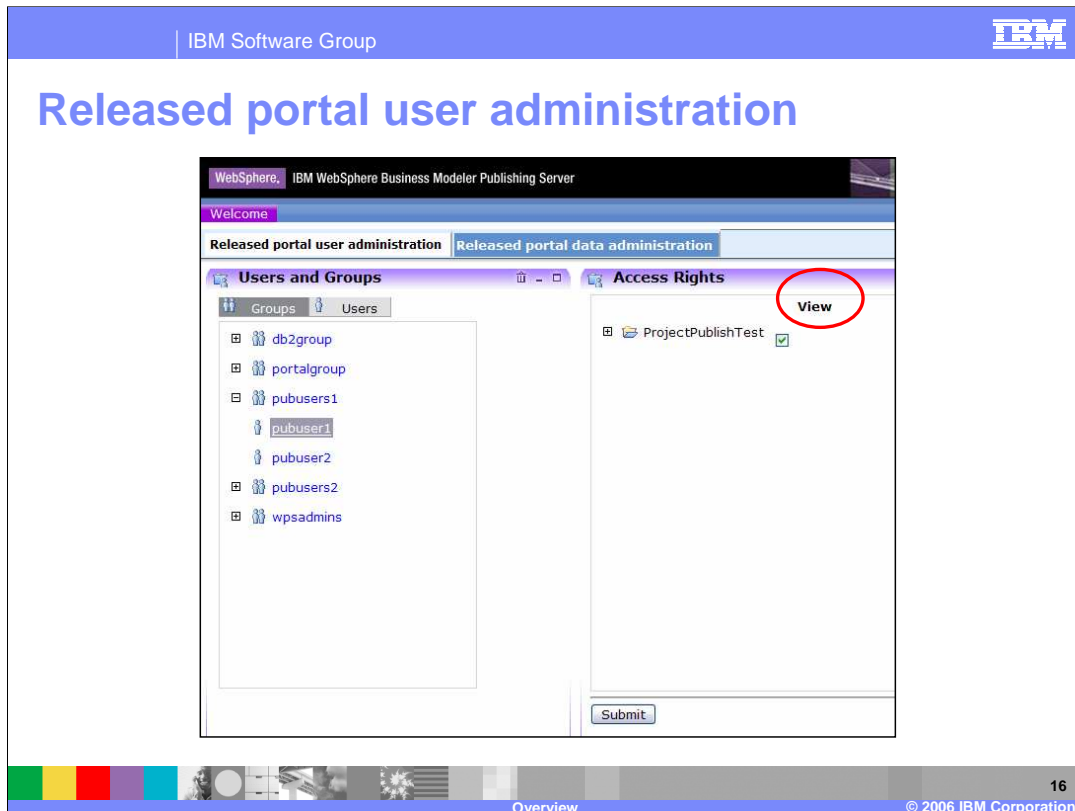
In the right pane the data elements and the business processes are listed with two check boxes for each. The first box enables view privileges and the second one, on the right, enables review privileges. Note the visual cue circled in red.



Selecting the “Draft portal data administration” tab, provides the administrator with the ability to manage the published data.

Elements, comments and users can be purged from the database.

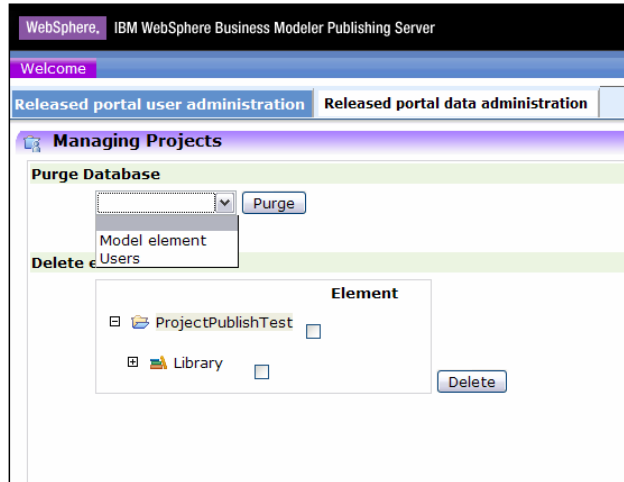
A draft project can be promoted to a released project and individual elements and comments can be deleted.



Shown here is the screen that is displayed when “Administer released projects” is selected from the Welcome page.

The function available here is the same as with the draft projects except now there is only one checkbox, to enable viewing.

Released portal data administration

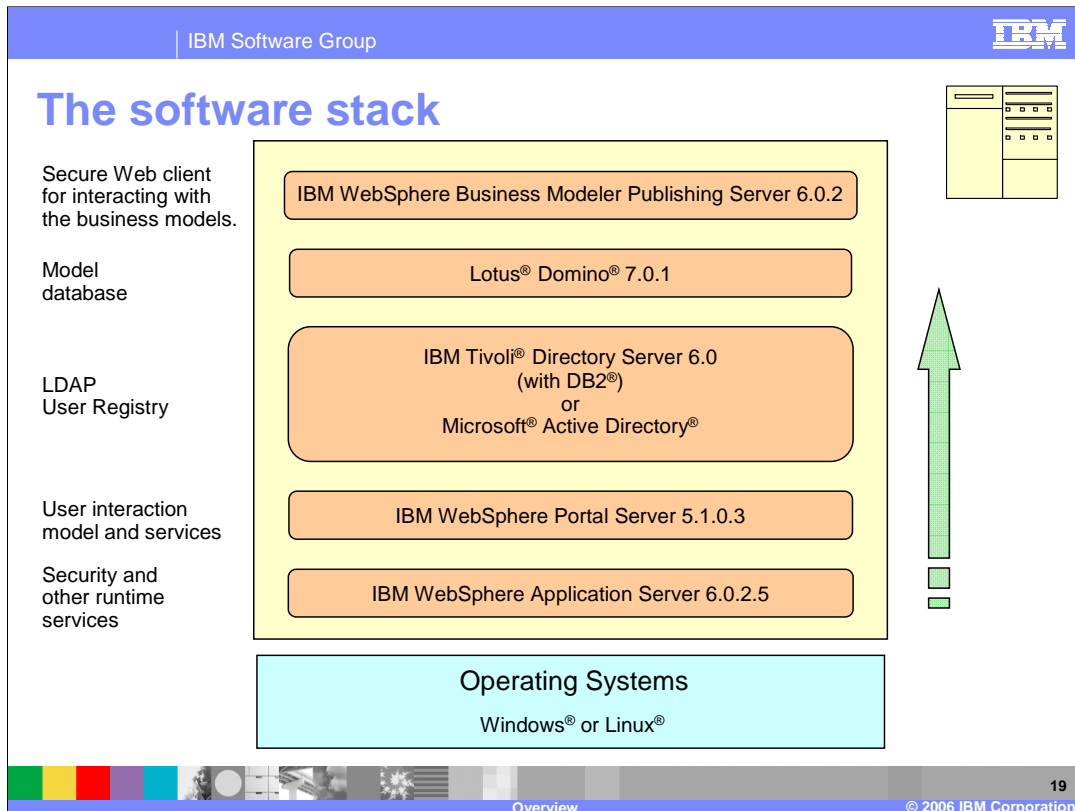


From the “Released portal data administration” tab, the administrator can purge and delete model elements and users.

Agenda

- Introduction
- WebSphere Business Modeler and WebSphere Business Modeler Publishing Server
- Capabilities of the WebSphere Business Modeler Publishing Server
- **The supporting software.**

The next and final topic is the supporting software stack.



The rich mix of supporting software shown here is necessary to meet the unique interactions and security requirement of the WebSphere Business Modeler Publishing Server.

Beginning at the bottom of the stack are the supported operating systems. A detailed list is provided on subsequent pages in this discussion. There are several versions of Windows and two versions of Linux, Red Hat and SUSE, which are supported for WebSphere Business Modeler Publishing Server V6.0.2.

Moving up the stack, there is the WebSphere Application Server which provides the hosting environment for the publishing server application, along with runtime services such as security, clustering and failover.

At the next layer is the WebSphere Portal Server which provides a very rich user interaction model. The WebSphere Portal Server security and user interaction model allow for the separation of the reviewers and the viewers of the models, along with the administrative capabilities required by the administrator.

To support the secure user access there is a need for a repository of users. With WebSphere Application Server and WebSphere Portal Server the most powerful and flexible *User Registry* supported is LDAP. You can see here that the two most common LDAP repositories are supported, the IBM Tivoli Directory Server and Microsoft Active Directory.

Prerequisite details: Operating systems

- Operating Systems
 - ▶ Windows 2000 Advanced Server with Service Pack 4
 - ▶ Windows 2000 Professional Server with Service Pack 4
 - ▶ Windows 2000 Server with Service Pack 4
 - ▶ Windows 2003 Enterprise Server with Service Pack 1
 - ▶ Windows 2003 Advanced Server with Service Pack 1
 - ▶ Windows XP Professional with Service Pack 2
 - ▶ Red Hat Linux 4.0 on Intel® (32-bit)
 - Update 1 or higher required for Domino Server 7.0.1
 - Known issues with update 1, suggest update 3 if possible.
 - ▶ SUSE Linux Enterprise Server 9 on Intel (32-bit)
 - For Domino Server 7.0.1
 - Service Pack 1 or higher
 - Kernel: 2.6.5-7.139 or higher
 - gdb 6.3 may be needed on x86 if there are issues with stacks in nsd.



Here is a detailed list of the supporting Operating Systems. As you can see, the full range of Windows servers are supported as is Windows XP Professional.

For Linux there is Linux Red Hat 4.0 on Intel (32-bit) update 3 and SUSE Linux Enterprise Server 9 on Intel (32-bit) with service pack 1 or higher. Version 6.0.2 of WebSphere Modeler Publishing Server is the first version that supports the Linux platforms.

Summary

- As a WebSphere Portal application, the WebSphere Modeler Publishing Server provides a rich set of administrative capabilities for managing the published business models and data elements.
 - ▶ Projects can be reviewed or explored based on the access privileges of individual users or groups.
- The supporting software stack includes the base application server, an LDAP user registry, a Lotus database for application artifacts and a Portal Server for presentation and user interactions.



As a WebSphere Portal application, the WebSphere Modeler Publishing Server provides a rich set of administrative capabilities for managing the published business models and data elements.

Projects can be reviewed or explored based on the access privileges of individual users or groups.

The supporting software stack includes the base application server, an LDAP user registry, a Lotus database for application artifacts and a Portal Server for presentation and user interactions.

Trademarks, copyrights, and disclaimers

The following terms are trademarks or registered trademarks of International Business Machines Corporation in the United States, other countries, or both:

DB2 Domino IBM Lotus Tivoli WebSphere

Intel is a trademark of Intel Corporation in the United States, other countries, or both.

Active Directory, Windows, and the Windows logo are registered trademarks of Microsoft Corporation in the United States, other countries, or both.

Linux is a registered trademark of Linus Torvalds in the United States, other countries, or both.

Product data has been reviewed for accuracy as of the date of initial publication. Product data is subject to change without notice. This document could include technical inaccuracies or typographical errors. IBM may make improvements or changes in the products or programs described herein at any time without notice. Any statements regarding IBM's future direction and intent are subject to change or withdrawal without notice, and represent goals and objectives only. References in this document to IBM products, programs, or services does not imply that IBM intends to make such products, programs or services available in all countries in which IBM operates or does business. Any reference to an IBM Program Product in this document is not intended to state or imply that only that program product may be used. Any functionally equivalent program, that does not infringe IBM's intellectual property rights, may be used instead.

Information is provided "AS IS" without warranty of any kind. THE INFORMATION PROVIDED IN THIS DOCUMENT IS DISTRIBUTED "AS IS" WITHOUT ANY WARRANTY, EITHER EXPRESS OR IMPLIED. IBM EXPRESSLY DISCLAIMS ANY WARRANTIES OF MERCHANTABILITY, FITNESS FOR A PARTICULAR PURPOSE OR NON-INFRINGEMENT. IBM shall have no responsibility to update this information. IBM products are warranted, if at all, according to the terms and conditions of the agreements (for example, IBM Customer Agreement, Statement of Limited Warranty, International Program License Agreement, etc.) under which they are provided. Information concerning non-IBM products was obtained from the suppliers of those products, their published announcements or other publicly available sources. IBM has not tested those products in connection with this publication and cannot confirm the accuracy of performance, compatibility or any other claims related to non-IBM products.

IBM makes no representations or warranties, express or implied, regarding non-IBM products and services.

The provision of the information contained herein is not intended to, and does not, grant any right or license under any IBM patents or copyrights. Inquiries regarding patent or copyright licenses should be made, in writing, to:

IBM Director of Licensing
IBM Corporation
North Castle Drive
Armonk, NY 10504-1785
U.S.A.

Performance is based on measurements and projections using standard IBM benchmarks in a controlled environment. All customer examples described are presented as illustrations of how those customers have used IBM products and the results they may have achieved. The actual throughput or performance that any user will experience will vary depending upon considerations such as the amount of multiprogramming in the user's job stream, the I/O configuration, the storage configuration, and the workload processed. Therefore, no assurance can be given that an individual user will achieve throughput or performance improvements equivalent to the ratios stated here.

© Copyright International Business Machines Corporation 2006. All rights reserved.

Note to U.S. Government Users - Documentation related to restricted rights-Use, duplication or disclosure is subject to restrictions set forth in GSA ADP Schedule Contract and IBM Corp.

