



IBM Software Group

IBM® WebSphere® Business Modeler V6.1

Business measures enhancements



@business on demand.

© 2008 IBM Corporation
Updated April 22, 2008

This presentation will discuss the new business measures enhancements available with WebSphere Business Modeler V6.1.

The enhancements discussed in this presentation build on the business measures features introduced in WebSphere Business Modeler V6.0.2.

Business measures in WebSphere Business Modeler

- Business measures in WebSphere Business Modeler provide a way for the business analyst to indicate what should be monitored when the business process is executing.
 - ▶ The business analyst has insight into key elements of the business process that can indicate the success or failure of strategic business goals.
- The business analyst specifies what should be monitored.
 - ▶ The specification is exported to the WebSphere Business Monitor toolkit
 - The implementation is then completed by the integration developer.



When developing a business model the business analyst learns what parts of the business processes are critical to the overall performance of the business. Some parts are more important than others. With WebSphere Business Modeler the business analyst can specify the parts of the model that they want to have monitored at runtime. This will provide them with the information necessary to determine if the business process is meeting the expected goals.

Creating a complete monitoring model is not the role of the business analyst. The monitoring model is created by an integration developer as part of the runtime implementation. The business analyst provides input into the monitoring model by specifying what they would like to see as part of the monitoring model. This input is provided as the business measures which are specified in WebSphere Business Modeler.

What's new?



- The ability to associate business measures with process elements.
- Pre-defined business measures
 - ▶ A set of business measure templates for commonly monitored business measures.
- Not available for
 - ▶ Global tasks
 - ▶ Global business rules
 - ▶ Global human tasks

Start Time
End Time
Working Duration
Elapsed Duration
State
Assigned User
Is Escalated
Is Delayed
Business Item Input
Business Item Output
Iteration Counter
Calling Process Name



When specifying business measures it quickly becomes apparent that there are certain metrics that are needed over and over again in many parts of the business model.

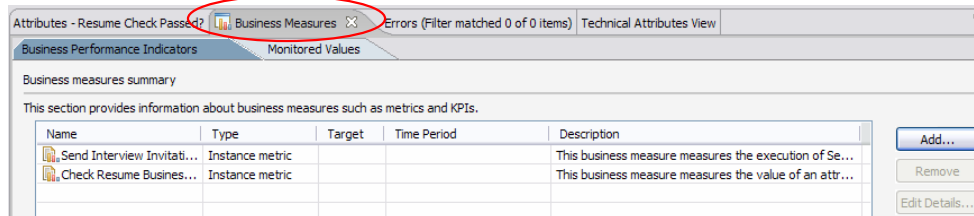
With WebSphere Business Modeler V6.1, the commonly used metrics are provided as templates that can be easily used when specifying the business measures. Shown here is the list of available pre-defined business metrics.

As you can see, each of these metrics is useful in monitoring the performance and identifying the data, the user, and the processes involved.

With V6.1 you can now easily associate a metric with a process element. This is shown in the next couple of slides.

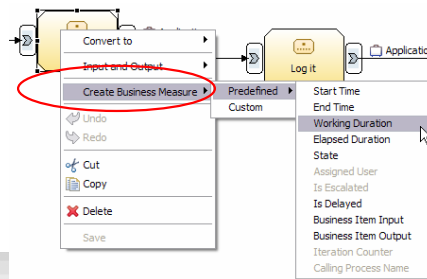
Creating business measures

- There are two ways to create new business measures using the process editor.
 - The Business Measures view



- The pop-up menu of a process element

New V6.1



Business measures enhancements

© 2008 IBM Corporation

When you want to create a business measure for a particular part of the business process, the easiest way is to right mouse click on the process element and select create business measures from the pop-up menu. You will notice that there are more options. You can select from the list of the pre-defined business measures or you can create a custom business measure. Creating a custom business measure is the same as creating a business measure in WebSphere Business Modeler V6.0.2.

Alternately you can use the business measures view by selecting the business measures tab for the business process you are working on.

Business measures details

- At first glance it looks the same as in 6.0.2
 - ▶ Notice the Template field
 - ▶ Using a pre-defined business measure template is optional.

The screenshot shows a window titled "Business Measure Details - Measure 1". The window contains a form with the following fields and options:

- Business Measure Details**
Specify additional details to describe how the business measure is calculated.
- Optionally, you can create a business measure by applying a predefined template to a process element.
- Template**: A dropdown menu currently set to "Unspecified". A blue starburst callout labeled "New V6.1" points to this field, which is also circled in red.
- Name**: A text input field containing "Measure 1".
- Type**: Radio buttons for "KPI", "Instance metric", "Aggregate metric", and "Unspecified" (which is selected).
- Description**: A large text area.
- At the bottom left, there is a "Dashboard viewers" link.

The footer of the window displays "Business measures enhancements" and "© 2008 IBM Corporation".

Selecting the add button in the business measures view will take you to the business measures details form shown here.

For the most part it is the same as the business measures details form in V6.0.2. With V6.1 there is a new section at the top of the form for selecting the Template.

At this point you can choose to use a template or you can create your own custom business measure.

Process element and attributes

Business Measure Details
Specify additional details to describe how the business measure is calculated.

Optionally, you can create a business measure by applying a predefined template to a process element.

Template Business Item Input

Process element Check Resume **Attribute** Application.Applicant.ZipCode (CheckResume) Browse...

Name Check Resume Business Item Input

Type KPI Instance metric Aggregate metric Unspecified

Description This business measure measures the value of an attribute of the input to Check Resume.

Dashboard viewers

Specify a default value and type

Type: Characters

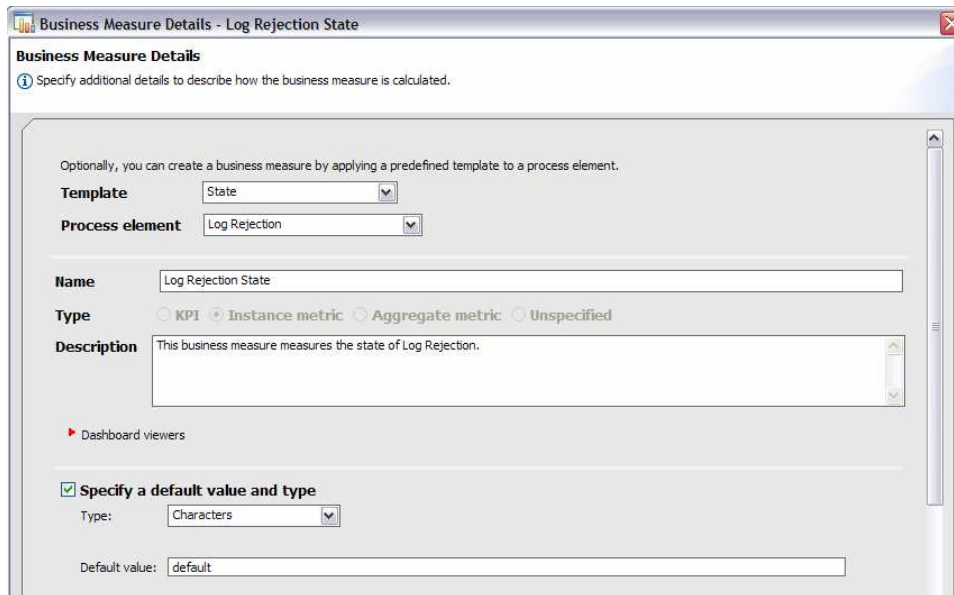
Default value: 0000000

Business measures enhancements © 2008 IBM Corporation

Selecting a template will display the fields for the process element and the attribute. The fields that are displayed, such as process element and attribute will depend on the template selected. In this case since the business item input template has been selected, you will then need to specify the process element you want to monitor the input on and the actual attribute to monitor.

Note also that the type, instance metric, has been selected for you and that the other choices are no longer selectable. The type will determine the remaining optional fields on the form that are available.

The state template



Business Measure Details - Log Rejection State

Business Measure Details
Specify additional details to describe how the business measure is calculated.

Optionally, you can create a business measure by applying a predefined template to a process element.

Template State

Process element Log Rejection

Name Log Rejection State

Type KPI Instance metric Aggregate metric Unspecified

Description This business measure measures the state of Log Rejection.

Dashboard viewers

Specify a default value and type

Type: Characters

Default value: default



Shown here is another template. It too, is of type instance metric, but now there is only one field available, the process element field.

The main purpose of this slide is to show you the dynamic nature of the template specification. The fields that are presented depend on the template being used.

The state to be monitored here is the state of the task or activity. It is not the state of a business item. The state of the activity will have to be determined by the integration developer when developing the monitoring model.

The rest of the details form is the same as V6.0.2

Specify when to send an alert and the action to take as a result
For example, when this measure exceeds a certain value, an email may need to be sent.

Alert Description

Specify how to aggregate this measure across multiple runs of the process
This can be used for historical analysis in the Dimensional view.

Name	Function

Specify the categories that will be available in the Dimensional viewer for analysis of the metric
For example, location, city, or sales representative.

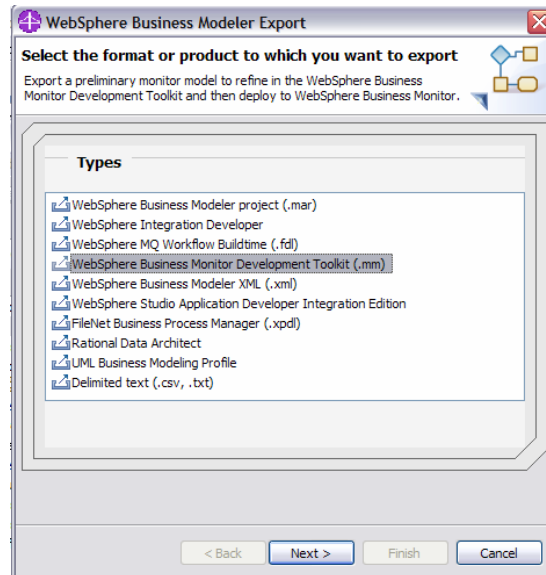
Dimension



The remainder of the business measures details form, where you specify the optional features, is the same as for WebSphere Business Modeler V6.0.2. For more information on the optional fields see the V6.0.2 presentation for business measures.

Sharing business measures with Monitor toolkit

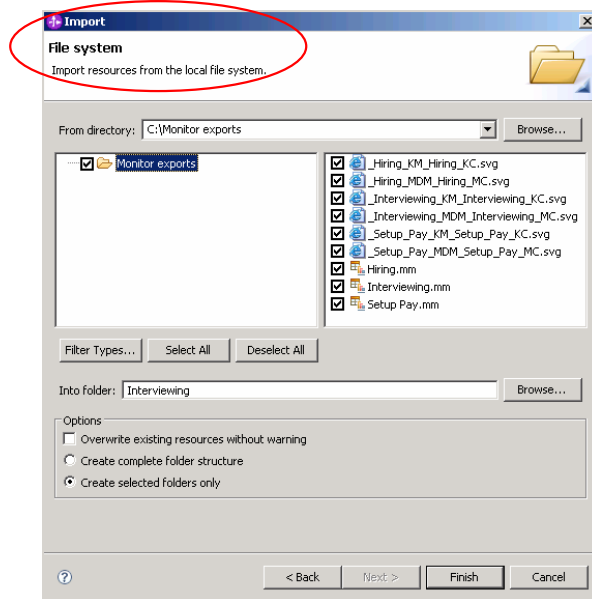
- Export using the Business Monitor Development Toolkit(.mm) export type.



Once you have completed specifying your business measures, you export them in a format that can be imported into the WebSphere Business Monitor Toolkit. (.mm)

Import into WebSphere Business Monitor toolkit

- Import using the File System import type
 - ▶ Business Monitor perspective
 - ▶ Import into an existing monitor project.

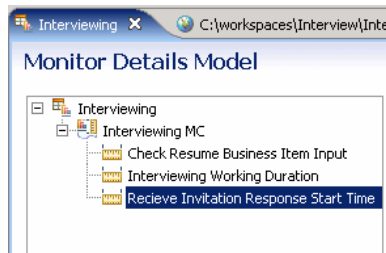
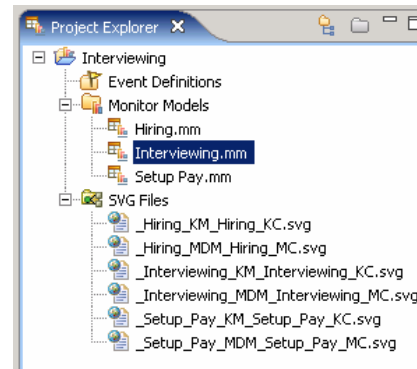


The next step is to import the monitor model file with the business measures, into the WebSphere Business Monitor Toolkit.

Notice that there is no special import type. When importing the business measures into the monitor toolkit, use the generic file system import type.

WebSphere Business Monitor toolkit

- Imported files are placed in the appropriate directories.

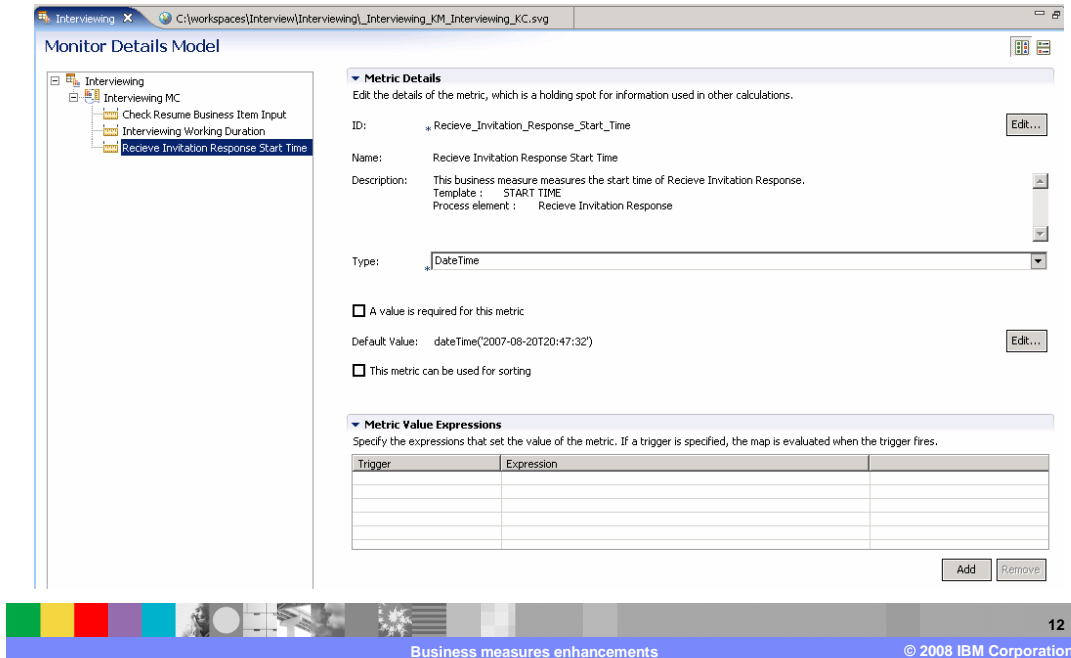


Metrics, KPIs, and measures are established as appropriate for each of the business measures that were defined in WebSphere Business Modeler.



When the business measures are imported into the monitor toolkit, the artifacts are placed into the appropriate folders within the target monitoring project.

The implementation is not complete



Monitor Details Model

Metric Details
 Edit the details of the metric, which is a holding spot for information used in other calculations.

ID: Recieve_Invitation_Response_Start_Time Edit...

Name: Recieve Invitation Response Start Time

Description: This business measure measures the start time of Recieve Invitation Response.
 Template : START TIME
 Process element : Recieve Invitation Response

Type: DateTime

A value is required for this metric
 Default Value: dateTime("2007-08-20T20:47:32") Edit...

This metric can be used for sorting

Metric Value Expressions
 Specify the expressions that set the value of the metric. If a trigger is specified, the map is evaluated when the trigger fires.

Trigger	Expression

Add Remove

12
 Business measures enhancements © 2008 IBM Corporation

Key information from the WebSphere Business Modeler is imported into the monitoring model toolkit. In the example shown here, the key information is the default timestamp. The information imported provides the starting point for the integration developer that will complete the monitoring model.

The business analyst only specifies in WebSphere Business Modeler what needs to be monitored. The task of defining how this is achieved is left up to the integration developer.

Summary

- The business measures support in WebSphere Business Modeler V6.0.2 is extended in V6.1
- Predefined templates for commonly used metrics are available for the business analyst to select from.
- Business measures are easily associated with process elements.



The support for predefined business measures in WebSphere Business Modeler V6.1 is a natural extension of the previous release. The capability to define custom business measures was provided in V6.0.2. The next logical step is to identify the most commonly used metrics and provide them as selectable options for the business analyst.

To make it even easier the predefined business measures can be easily specified and associated with a process element directly from the process editor canvas.

Feedback

Your feedback is valuable

You can help improve the quality of IBM Education Assistant content to better meet your needs by providing feedback.

- Did you find this module useful?
- Did it help you solve a problem or answer a question?
- Do you have suggestions for improvements?

Click to send e-mail feedback:

[mailto:iea@us.ibm.com?subject=Feedback about WBIV61 WBModelerUpdate BusinessMeasures.ppt](mailto:iea@us.ibm.com?subject=Feedback%20about%20WBIV61%20WBModelerUpdate%20BusinessMeasures.ppt)

This module is also available in PDF format at:

[..\\WBIV61 WBModelerUpdate BusinessMeasures.pdf](..\\WBIV61%20WBModelerUpdate%20BusinessMeasures.pdf)



You can help improve the quality of IBM Education Assistant content by providing feedback.

Trademarks, copyrights, and disclaimers

The following terms are trademarks or registered trademarks of International Business Machines Corporation in the United States, other countries, or both:

IBM WebSphere

A current list of other IBM trademarks is available on the Web at <http://www.ibm.com/legal/copytrade.shtml>

Product data has been reviewed for accuracy as of the date of initial publication. Product data is subject to change without notice. This document could include technical inaccuracies or typographical errors. IBM may make improvements or changes in the products or programs described herein at any time without notice. Any statements regarding IBM's future direction and intent are subject to change or withdrawal without notice, and represent goals and objectives only. References in this document to IBM products, programs, or services does not imply that IBM intends to make such products, programs or services available in all countries in which IBM operates or does business. Any reference to an IBM Program Product in this document is not intended to state or imply that only that program product may be used. Any functionally equivalent program, that does not infringe IBM's intellectual property rights, may be used instead.

Information is provided "AS IS" without warranty of any kind. THE INFORMATION PROVIDED IN THIS DOCUMENT IS DISTRIBUTED "AS IS" WITHOUT ANY WARRANTY, EITHER EXPRESS OR IMPLIED. IBM EXPRESSLY DISCLAIMS ANY WARRANTIES OF MERCHANTABILITY, FITNESS FOR A PARTICULAR PURPOSE OR NON-INFRINGEMENT. IBM shall have no responsibility to update this information. IBM products are warranted, if at all, according to the terms and conditions of the agreements (for example, IBM Customer Agreement, Statement of Limited Warranty, International Program License Agreement, etc.) under which they are provided. Information concerning non-IBM products was obtained from the suppliers of those products, their published announcements or other publicly available sources. IBM has not tested those products in connection with this publication and cannot confirm the accuracy of performance, compatibility or any other claims related to non-IBM products.

IBM makes no representations or warranties, express or implied, regarding non-IBM products and services.

The provision of the information contained herein is not intended to, and does not, grant any right or license under any IBM patents or copyrights. Inquiries regarding patent or copyright licenses should be made, in writing, to:

IBM Director of Licensing
IBM Corporation
North Castle Drive
Armonk, NY 10504-1785
U.S.A.

Performance is based on measurements and projections using standard IBM benchmarks in a controlled environment. All customer examples described are presented as illustrations of how those customers have used IBM products and the results they may have achieved. The actual throughput or performance that any user will experience will vary depending upon considerations such as the amount of multiprogramming in the user's job stream, the I/O configuration, the storage configuration, and the workload processed. Therefore, no assurance can be given that an individual user will achieve throughput or performance improvements equivalent to the ratios stated here.

© Copyright International Business Machines Corporation 2008. All rights reserved.

Note to U.S. Government Users - Documentation related to restricted rights-Use, duplication or disclosure is subject to restrictions set forth in GSA ADP Schedule Contract and IBM Corp.