



IBM Software Group

# WebSphere Business Modeler Publishing Server V6.2

## *Administration*



@business on demand.

© 2009 IBM Corporation  
Updated April 22, 2009

This presentation provides an introduction to the administration functions of WebSphere® Business Modeler Publishing Server V6.2

## Goal

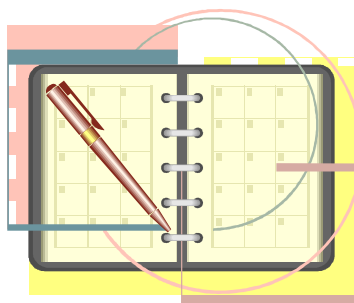
- Provide details about managing users and projects in WebSphere Business Modeler Publishing Server



The goal here is to provide the basic information needed to configure your users and groups to be used with the WebSphere Business Modeler Publishing Server V6.2.

## Agenda

- The WebSphere Application Server foundation
- User registries
- Business Space
- Access control
- Managing content
- Themes and templates



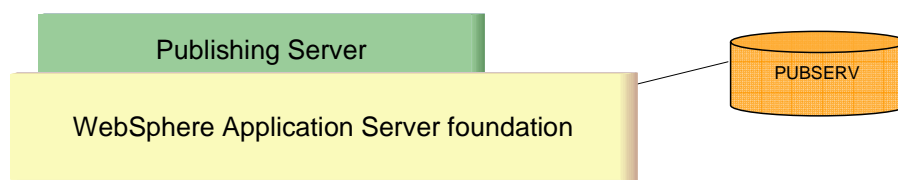
To get the complete picture of the administration model, there are several layers to consider. First there is WebSphere, then the Business Space and finally the Publishing Server. With the Publishing Server administration model there is access control and content management.

There are also Business Space features for customizing the colors, header graphics, and titles of your Publishing Server Business Spaces. As the owner of a Business Space you can change the default themes and as a super user, you can create customized templates.

This presentation will take you through the various administration layers and show you how to setup the default user registry, assign authorization to Publishing Server artifacts, manage the content, and customize the themes and templates.

## The WebSphere foundation

- WebSphere Business Modeler Publishing Server
  - ▶ A WebSphere application that uses a DB2® database.
  - ▶ Can take full advantage of the WebSphere architecture and runtime services.
    - Scalability, transactions, security, business space and more



As an administrator it is important to keep in mind the basic architecture of WebSphere Business Modeler Publishing Server. The Publishing Server is an application running in the WebSphere Application Server and uses a DB2 database to store and retrieve the model element and relationships. The Publishing Server application manages the access list for the model artifacts and keeps this information in the DB2 database also.

By using the WebSphere Application Server foundation the Publishing Server can use the foundational services for scalability, transactions, and security. To understand the WebSphere Business Modeler Publishing Server administration model you need to begin with the WebSphere security model. WebSphere security provides for several different kinds of user registries. The Publishing Server can use any of the user-registries supported by the WebSphere Application Server. The default user registry is the WebSphere Virtual Member Manager and is what the WebSphere Business Modeler Publishing Server uses by default also.

## User registries

- Administrative security is enabled by default during installation
- Three levels
  - ▶ WebSphere Application Server
    - Business Space
      - Publishing Server
- All users and groups are defined in the WebSphere Application Server user registry
  - ▶ The default user registry is the WebSphere Virtual Member manager (VMM)
  - ▶ VMM can be federated with a custom registry or with an LDAP user registry.
  - ▶ Configured through the WebSphere Application Server *Integrated Solutions Console*

5

The user access control is composed of three layers, WebSphere Application Server, Business Space, and Publishing Server.

All of the users and groups are defined in the WebSphere Application Server user-registry. The default WebSphere user registry uses the WebSphere Virtual Member Manager. The user registry can be extended by federating it with a custom user registry or an LDAP user registry. The user registries are configured using the WebSphere Integrated Solutions Console. If the WebSphere Virtual Member Manager is used then all the users and groups are managed using the Integrated Solutions Console. If the user-registry is federated with an LDAP registry, then the users and groups are administered using the interface provided by the LDAP registry. If a custom user registry is used then it will need to provide an interface for managing the users and groups.

The next level to consider is the Business Space. A business space can be created by anyone. The person that creates the Business Space becomes the owner. The owner of the Business Space can then share the Business Space with other viewers or editors. A Publishing Server Business Space is created using the Reviewing template.

Once the Publishing Server Business Space has been created using the Reviewing template, the owner of the Business Space can then manage what users or groups can publish to the Publishing Server. Additionally the owner can permit users and groups to view and comment on specific process models or parts of them.

The screenshot shows the IBM WebSphere Integrated Solutions Console interface. At the top, there is a blue header with 'IBM Software Group' on the left and the 'IBM' logo on the right. Below the header, the main title 'WebSphere security' is displayed in a large blue font. The console is divided into a left-hand navigation pane and a main content area. The navigation pane includes a 'View' dropdown set to 'All tasks' and a list of categories: Welcome, Guided Activities, Servers, Applications, Resources, Security, Environment, System administration, Users and Groups, Monitoring and Tuning, Troubleshooting, Service integration, and UDDI. The 'Security' category is expanded, showing sub-items: 'Secure administration, applications, and infrastructure' (which is selected), 'SSL certificate and key management', and 'Bus Security'. The main content area is titled 'Secure administration, applications, and infrastructure' and contains a 'Configuration' tab. Under this tab, there are two buttons: 'Security Configuration Wizard' and 'Security Configuration Report'. Below these are three sections: 'Administrative security' with a checked 'Enable administrative security' checkbox and links for 'Administrative User Roles' and 'Administrative Group Roles'; 'Application security' with a checked 'Enable application security' checkbox, which is circled in red; and 'Java 2 security' with an unchecked 'Use Java 2 security to restrict application access to local resources' checkbox and two checked options: 'Warn if applications are granted custom permissions' and 'Restrict access to resource authentication data'. At the bottom of the console, there is a blue bar with 'Administration' on the left, a page number '6' in the center, and '© 2009 IBM Corporation' on the right.

The WebSphere administrative security is enabled by default.

You may need to manually enable the application security using the WebSphere Integrated Solutions Console.

IBM Software Group IBM

## WebSphere Virtual Member Manager

Integrated Solutions Console Welcome wpsadmin Help | Logout

View: All tasks

- Welcome
- Guided Activities
- Servers
- Applications
- Resources
- Security
- Environment
- System administration
- Users and Groups
  - Administrative User Roles
  - Administrative Group Roles
  - Manage Users**
  - Manage Groups
- Monitoring and Tuning
- Troubleshooting
- Service integration
- UDDI

### Manage Users

Search for Users

Search by: User ID \* Search for: \* Maximum results: 100

5 users matched the search criteria.

Select	User ID	First name	Last name	E-mail	Unique Name
<input type="checkbox"/>	<a href="#">Dick</a>	Dick	Woods	zaq123	uid=Dick,o=defaultWIMFileBasedRealm
<input type="checkbox"/>	<a href="#">Harry</a>	Harry	Mess	zaq123	uid=Harry,o=defaultWIMFileBasedRealm
<input type="checkbox"/>	<a href="#">Tom</a>	Tom	Thumb	zaq123	uid=Tom,o=defaultWIMFileBasedRealm
<input type="checkbox"/>	<a href="#">jstratfo</a>	Jeff	Stratford	jstratfo	uid=jstratfo,o=defaultWIMFileBasedRealm
<input type="checkbox"/>	<a href="#">wpsadmin</a>	wpsadmin	wpsadmin		uid=wpsadmin,o=defaultWIMFileBasedRealm

Page 1 of 1 Total: 5

First create the users, then the groups.

Administration 7

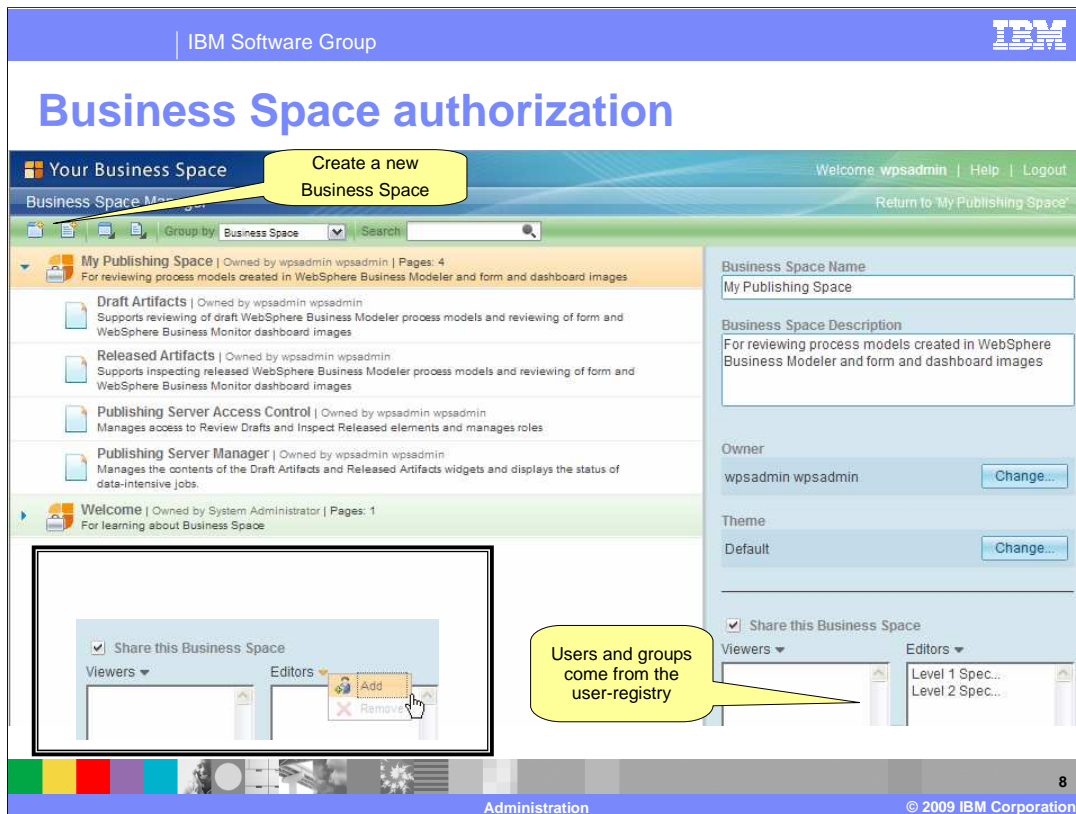
© 2009 IBM Corporation

With the WebSphere Application Server virtual member manager, the users and groups are created using the Integrated Solutions Console. First create the users, then the groups and then add the users to the groups.

The users must be defined here before they can log into the WebSphere Business Space.

You do not need to do anything with the administrative user and group roles for Publishing Server.

Working with the users and groups in the WebSphere Integrated Solutions Console is simple and easy. Be sure to save your work when you are done.



Any person that is defined in the user-registry can log into the WebSphere Business Space and create their own Business Space. If there are no Business Spaces associated with their name then they are presented with the Welcome Business Space. To create a Publishing Server Business Space you will create a new Business Space using the Reviewing template.

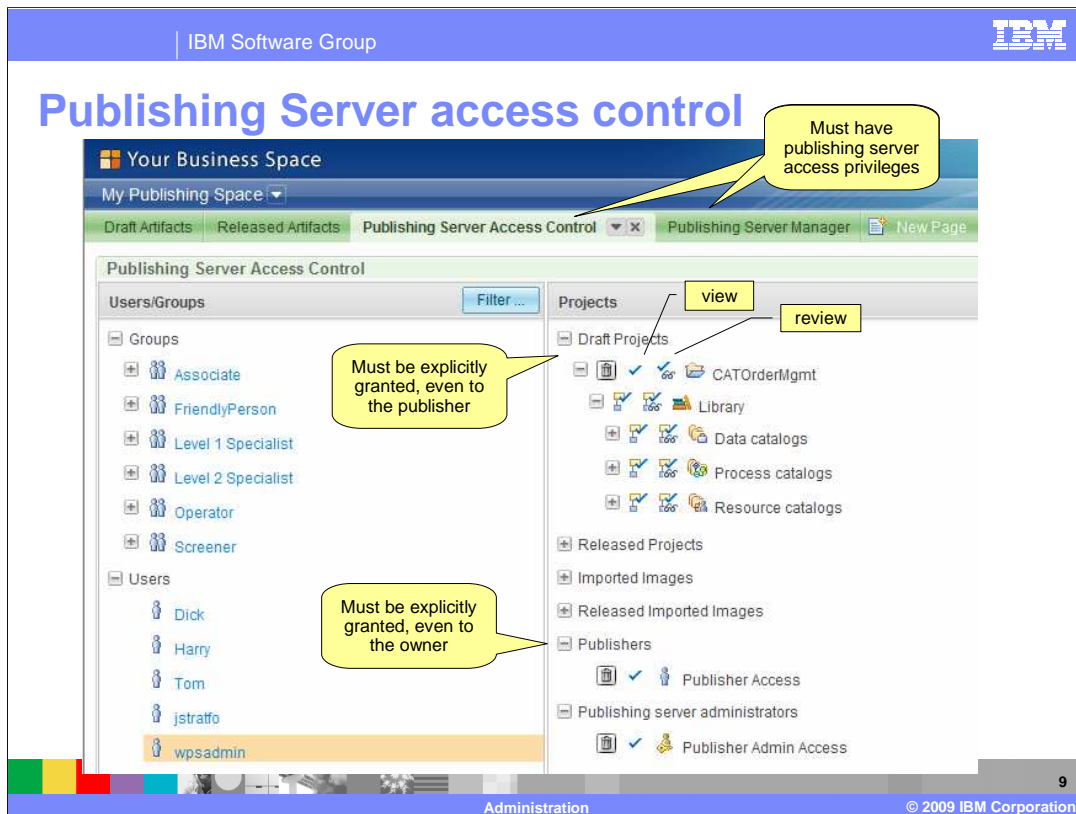
The owner of the Business Space can then grant permissions, either viewer or editor, to any person or group that is in the user-registry. Notice the “Share this Business Space” check box on the lower right of the screen capture.

To add a user or group, select the down arrow next to Viewers or Editors and then select add. See the insert on the left.

You can also share individual pages. If a person has only been given the viewer or editor access to the Released Artifacts Business Space page, they will only see that page when they log into the Business Space.

Viewer and editor privileges are for the Business Space only. Remember that the Business Space is customizable too. A person with editor privileges can add widgets to the Business Space. A person with viewer privileges will not see the add widgets menu.



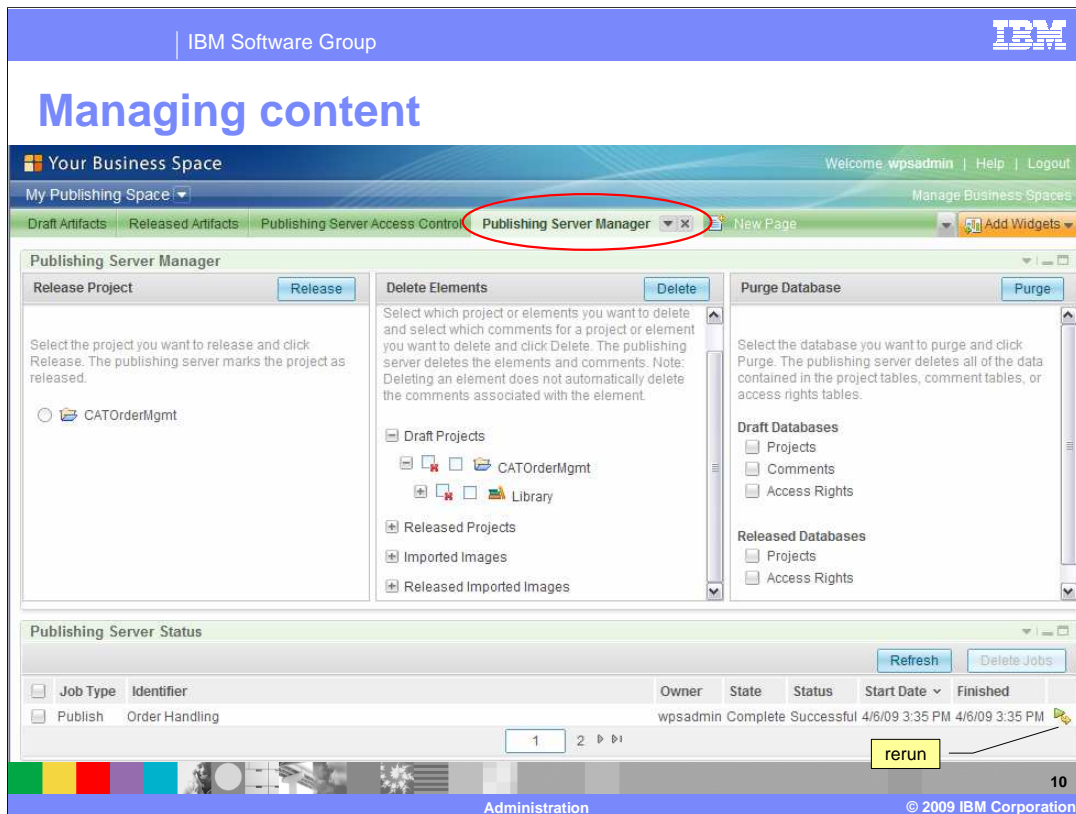


The third level of management is with the Publishing Server application. Here is where the owner of the Publishing Server Business Space sets up who can work with the various Publishing Server features. The access rights can be managed for individuals or groups. Expanding a group will show the individuals that are members of the group.

The owner of the Publishing Server Business Space is a Publishing server administrator by default. Only persons that are Publishing Server administrators can work with the “Publishing Server Access Control” and “Publishing Server Manager” pages.

By default no one is granted the Publisher access privilege. Before anyone can start publishing to the Publishing Server, they must be granted the Publisher access privilege. Once a person or group has been granted the publishing privilege, they can publish their projects to the server. This does not automatically give them the right to work with the projects they published. After the project is published, a publishing server administrator must explicitly grant permission for a user or group to work with the drafts or view the released projects. Permission can be granted for the entire project or a subset of it.

In the example of a draft project shown here, the Publishing Server administrator can grant viewing or reviewing privileges to the entire project or individual artifacts. Reviewers can add comments to the models, viewers can only look. For a released project there are no reviewing privileges. It is view only.



The Business Space administrator is also responsible for promoting draft projects to released projects and for managing the clutter that accumulates on the server. The publisher has no way to remove a project from the server. They must ask the administrator. It can also happen that the publisher published their entire project when they only meant to publish a part of it. In this case they can ask the administrator to delete the parts they did not want published. During the review process, the reviewers will add comments to the various parts of the model. As the model evolves the comments will no longer be relevant and will need to be removed from the draft projects.

Looking at the “Delete Elements” section in the center of the screen, you see that the Draft Projects has been expanded one level. The column on the left, with the red X is for deleting the elements and the column on the right is for deleting the associated comments. The administrator can manage the content that is available in the Publishing Server down to the individual element or comment.

The third panel on the far right gives the administrator the ability to purge key database tables. This is useful when you need to reset the environment. You can remove all the projects or access rights relevant to either the draft or release projects and the comments for the draft projects.

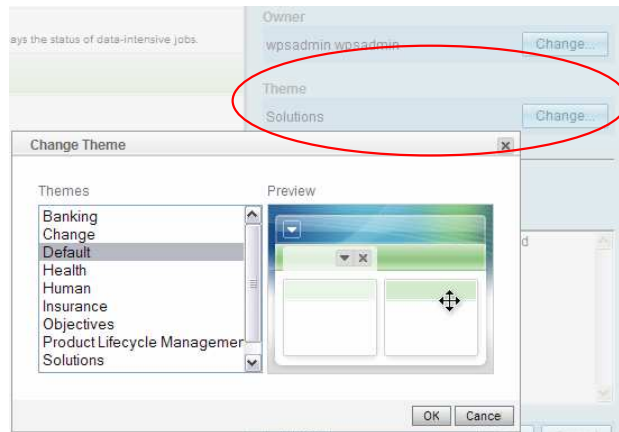
At the bottom of the screen is the Publishing Server Status. Here the administrator can check the status of a batch job that is running in the background. Running jobs can be “publish”, “delete”, “purge” or “release”. These jobs run in the background and the time to completion will vary based on the load on the server. The status list provides a running history for auditing and debugging. The jobs on the list can be deleted when they are no longer needed.

The little icon at the far right of the screen can be used to rerun a job if needed.

## Themes

- The theme for a Business Space can be easily changed using the Business Space Manager page.
  - ▶ Predefined themes
    - Cascading Style Sheets (CSS)
  - ▶ Customized themes
    - Creating themes:

<http://publib.boulder.ibm.com/infocenter/dmndhelp/v6r2mx/topic/com.ibm.bspace.620.help.framework.doc/advanced/creatingatheme.html>



Themes are a quick and easy way for you to make your Business Space distinctive. A theme sets the basic color scheme, the title, and the header background image. WebSphere Business Space comes with a set of 10 themes including the default theme. The themes are implemented as Cascading Style Sheets. Instructions for extending the existing themes are provided in the product information center at the address shown here.

## Templates

- The “Reviewing” template provides the all of the Business Space widgets and pages that are needed to create a Publishing Server Business Space.
- At some point you will want to add other widgets to the Publishing Server Business Space and make them available to your organization.
  - ▶ To create a custom template you must have *super user* authority.
    - Creating a Business Space super user role:  
[http://publib.boulder.ibm.com/infocenter/dmndhelp/v6r2mx/topic/com.ibm.websphere.wbpm.bspace.config.620.doc/doc/tcfg\\_bsp\\_superuser.html](http://publib.boulder.ibm.com/infocenter/dmndhelp/v6r2mx/topic/com.ibm.websphere.wbpm.bspace.config.620.doc/doc/tcfg_bsp_superuser.html)



The “Reviewing” template provides all of the Business Space widgets and pages that are needed to create a Publishing Server Business Space.

At some point though, you will want to add other widgets to your Publishing Server Business Space and make them available to your organization. The ability to create customized templates is provided as part of the WebSphere Business Space architecture. This administrative function is reserved for the person that has “super user” authorization.

The super user role has to be granted explicitly to a user. The instructions for doing this are described in the product information center at the address shown here.

As a super user, you will also be able to manage the complete set of templates that are available for your user community.

## Creating a Business Space template

- Create a Business Space and its pages the way you want it.
  - ▶ Set the theme, add and arrange your widgets
- As a super user there is an option on the Business Space Manager page,
  - ▶ “Convert into a Business Space Template”.
  - ▶ The template icon



**Business Space Name**  
AIMCP Publishing Server

**Business Space Description**  
For reviewing process models created in WebSphere Business Modeler and form and dashboard images

**Owner**  
wpsadmin wpsadmin Change...

**Theme**  
Default Change...

Convert into a Business Space Template

---

Share this Business Space

**Viewers** Editors

To create a template:

Log into the Business Space as a super user.

Create a business space and its pages.

Apply a layout style to each page and add widgets to the pages.

Configure the widgets where configuration is necessary or appropriate.

When the business space is ready, go to the Business Space Manager and select the business space.

Then select Convert into a Business Space Template.

In the list of business spaces, the business space now has the template icon.

As a super user, you will also notice that you have visibility to all of the Business Spaces and templates for your Business Space installation.

## Summary

- The WebSphere Application Server foundation
- User registries
- Business Space
- Access control
- Managing content
- Themes and templates



To understand the administration model for WebSphere Business Modeler Publishing Server you need to begin with the WebSphere Application Server foundation. The user-registry, which is the repository for all the users that might use the Publishing Server, is defined here. By default the WebSphere Virtual Member Manager is used.

The next level up from the foundation is the Business Space. The business space provides a personalized working area that can be shared with others. You create a Publishing Server Business Space using the Reviewing template. As the owner of the Business Space you then add users as either 'viewers' or 'editors'.

The Publishing Server application provides a third level of control. As the owner and administrator of your Publishing Server Business Space, you assign permissions to groups and individuals to view or comment on specific projects. You can grant permissions to the entire project or to individual elements.

There is also a complete set of maintenance functions available for the administrator to manage the content that is published. The administrator can promote draft projects, delete old ones, and clean up database tables.

And then there is the theme of the business space. Every organization needs to customize the look of their Business Space. Several predefined and easily tailored themes are provided as cascading style sheets.

## Feedback

### Your feedback is valuable

You can help improve the quality of IBM Education Assistant content to better meet your needs by providing feedback.

- Did you find this module useful?
- Did it help you solve a problem or answer a question?
- Do you have suggestions for improvements?

Click to send e-mail feedback:

[mailto:iea@us.ibm.com?subject=Feedback\\_about\\_WBPMv62\\_PubServer\\_Admin.ppt](mailto:iea@us.ibm.com?subject=Feedback_about_WBPMv62_PubServer_Admin.ppt)

This module is also available in PDF format at: [..\\WBPMv62\\_PubServer\\_Admin.pdf](..\\WBPMv62_PubServer_Admin.pdf)



You can help improve the quality of IBM Education Assistant content by providing feedback.

## Trademarks, copyrights, and disclaimers

IBM, the IBM logo, ibm.com, and the following terms are trademarks or registered trademarks of International Business Machines Corporation in the United States, other countries, or both:

DB2                      WebSphere

If these and other IBM trademarked terms are marked on their first occurrence in this information with a trademark symbol (® or ™), these symbols indicate U.S. registered or common law trademarks owned by IBM at the time this information was published. Such trademarks may also be registered or common law trademarks in other countries. A current list of other IBM trademarks is available on the Web at "Copyright and trademark information" at <http://www.ibm.com/legal/copytrade.shtml>

Other company, product, or service names may be trademarks or service marks of others.

Product data has been reviewed for accuracy as of the date of initial publication. Product data is subject to change without notice. This document could include technical inaccuracies or typographical errors. IBM may make improvements or changes in the products or programs described herein at any time without notice. Any statements regarding IBM's future direction and intent are subject to change or withdrawal without notice, and represent goals and objectives only. References in this document to IBM products, programs, or services does not imply that IBM intends to make such products, programs or services available in all countries in which IBM operates or does business. Any reference to an IBM Program Product in this document is not intended to state or imply that only that program product may be used. Any functionally equivalent program, that does not infringe IBM's intellectual property rights, may be used instead.

THE INFORMATION PROVIDED IN THIS DOCUMENT IS DISTRIBUTED "AS IS" WITHOUT ANY WARRANTY, EITHER EXPRESS OR IMPLIED. IBM EXPRESSLY DISCLAIMS ANY WARRANTIES OF MERCHANTABILITY, FITNESS FOR A PARTICULAR PURPOSE OR NON-INFRINGEMENT. IBM shall have no responsibility to update this information. IBM products are warranted, if at all, according to the terms and conditions of the agreements (for example, IBM Customer Agreement, Statement of Limited Warranty, International Program License Agreement, etc.) under which they are provided. Information concerning non-IBM products was obtained from the suppliers of those products, their published announcements or other publicly available sources. IBM has not tested those products in connection with this publication and cannot confirm the accuracy of performance, compatibility or any other claims related to non-IBM products.

IBM makes no representations or warranties, express or implied, regarding non-IBM products and services.

The provision of the information contained herein is not intended to, and does not, grant any right or license under any IBM patents or copyrights. Inquiries regarding patent or copyright licenses should be made, in writing, to:

IBM Director of Licensing  
IBM Corporation  
North Castle Drive  
Armonk, NY 10504-1785  
U.S.A.

Performance is based on measurements and projections using standard IBM benchmarks in a controlled environment. All customer examples described are presented as illustrations of how those customers have used IBM products and the results they may have achieved. The actual throughput or performance that any user will experience will vary depending upon considerations such as the amount of multiprogramming in the user's job stream, the I/O configuration, the storage configuration, and the workload processed. Therefore, no assurance can be given that an individual user will achieve throughput or performance improvements equivalent to the ratios stated here.

© Copyright International Business Machines Corporation 2009. All rights reserved.

Note to U.S. Government Users - Documentation related to restricted rights-Use, duplication or disclosure is subject to restrictions set forth in GSA ADP Schedule Contract and IBM Corp.