



IBM Software Group

WebSphere® Business Modeler Publishing Server V6.2

Overview



@business on demand.

© 2008 IBM Corporation
Updated December 18, 2008

This presentation provides an introduction to the new features provided by WebSphere Business Modeler Publishing Server V6.2

New capabilities

- Improves collaboration between people defining and implementing a business process
- Supports improved synchronization between WebSphere Business Modeler and WebSphere Business Modeler Publishing Server
- View models in the WebSphere Business Modeler Publishing Server using a Business Process Modeling Notation (BPMN) diagram viewer
 - ▶ SVG viewer replaced with Adobe® Flash 10 player
- Support for swimlane view
- Provides WebSphere Business Modeler Publishing Server in a collaborative *Business Space*.
- Updated platforms for WebSphere Business Modeler Publishing Server
 - ▶ Oracle 10g and 11g
 - ▶ Firefox
 - ▶ zLinux - SUSE Linux® Enterprise Server (SLES) 10.0 and Red Hat Enterprise Linux (RHEL) 5.0

WebSphere Business Modeler Publishing Server V6.2 moves to the next level with the new Business Space. Taking advantage of all the new improvements with Business Space, WebSphere Business Modeler Publishing Server V6.2 provides a quantum leap in usability and performance.

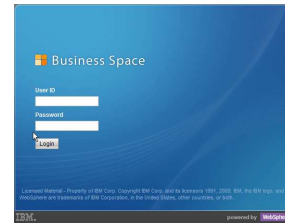
You will quickly notice what you see in the publishing server matches what is created in WebSphere Business Modeler much better than in previous versions. If you have swimlanes in your model then they can also be published to the publishing server for viewing and review.

The SVG viewer has been replaced with the new Adobe Flash player. This makes it much easier to navigate, explore, and understand complex business process diagrams.

Aside from all the usability improvements that come with the new Business Space V6.2, there are new supported databases, browsers and platforms.

The Business Space component

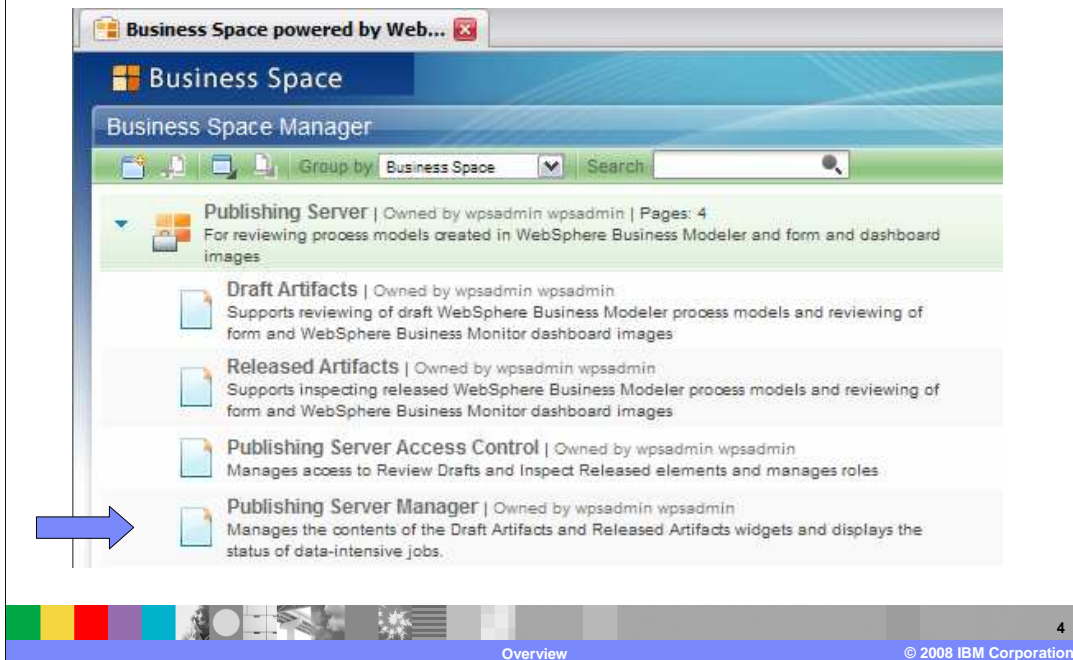
- New interface framework for WebSphere Business Modeler Publishing Server V6.2
 - ▶ Introduced with V6.1.2 with significant improvements in V6.2
- Based on Web 2.0
- The *Business Space* framework is used with several products:
 - ▶ WebSphere Business Monitor
 - ▶ WebSphere Process Server
 - ▶ WebSphere Business Modeler – direct deploy



The WebSphere Business Space is the new unifying user interface framework used across the WebSphere Business Process Management suite of products.

Use of the Business Space framework was first introduced with WebSphere Business Modeler Publishing Server V6.1.2. With V6.2 the publishing server can take advantage of all the improvements that come with the new Business Space V6.2. You will easily identify the new business space by the pretty blue logon screen.

Fewer pages, better organized



As you begin to work with WebSphere Business Modeler Publishing Server V6.2 one of the first things you'll notice is that there are fewer pages in the reviewing template. All of the management functions have been consolidated to the Publishing Server Manager page.

Management function on a single page

The screenshot shows the 'Publishing Server Manager' interface within the Business Space. It features three main management sections:

- Release Project:** Includes a 'Release' button and instructions to select a project (e.g., 'DoSomethingElse' or 'My Images') to move to the Released portal.
- Delete Elements:** Includes a 'Delete' button and instructions to select projects or elements (e.g., 'Draft Projects', 'Released Projects', 'Imported Images', 'Released Imported Images') for deletion.
- Purge Database:** Includes a 'Purge' button and instructions to select databases (e.g., 'Draft Databases' like Projects, Comments, Access Rights; and 'Released Databases' like Projects, Access Rights) for purging.

Below these sections is the 'Publishing Server Status' section, which displays a table of job logs:

Job Type	Identifier	Owner	State	Status	Start Date +	Finished
Publish	DoSomethingElse	wpsadmin	Complete	Successful	10/25/08 7:57 PM	10/25/08 7:57 PM

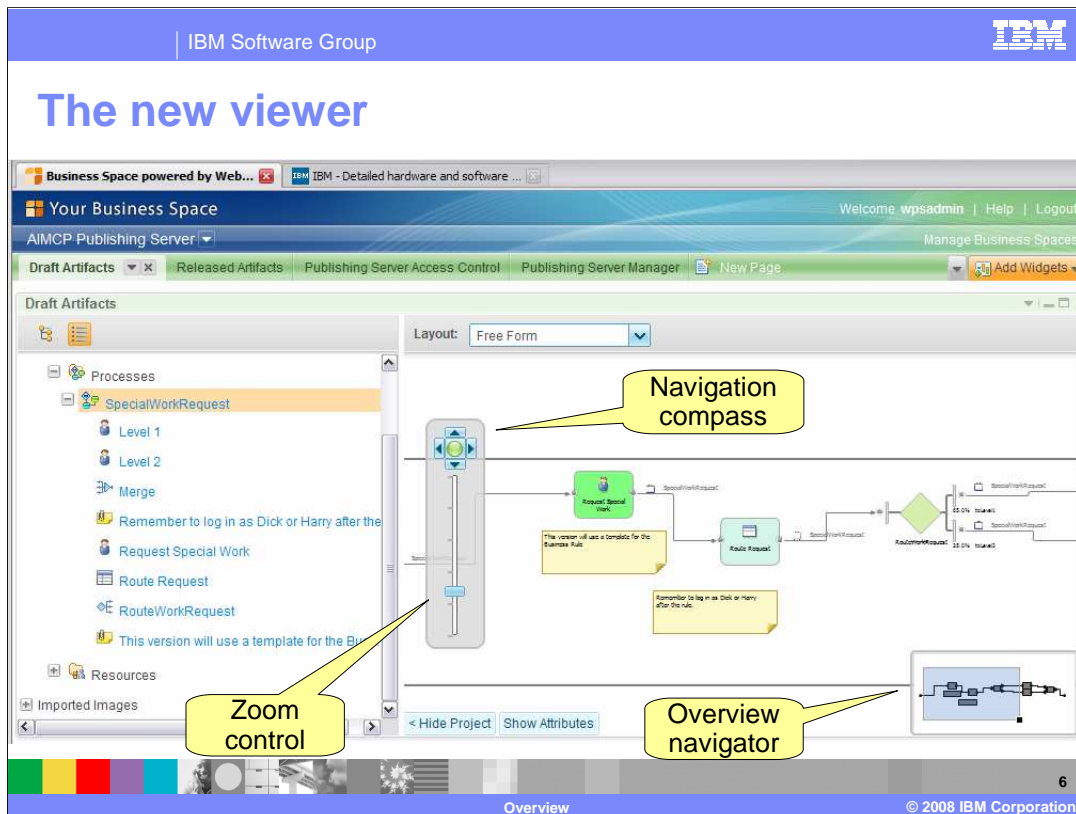
The interface includes a navigation bar at the top with 'Draft Artifacts', 'Released Artifacts', 'Publishing Server Access Control', and 'Publishing Server Manager'. The bottom of the page shows 'Overview' and '© 2008 IBM Corporation'.

Here you can see all of the management functions that have been consolidated onto the “Publishing Server Management” page.

All the same functions are still available but they are arranged more efficiently.

In Business Space terminology, there are two widgets on this page, the Publishing Server Manager widget, and the Publishing Server Status widget.

The Publishing Server Status widget keeps a running log of all the transactions, run against the publishing server. The administrator can easily see who published something, when it was published and if it was successful or not. They can also see what was deleted, purged, or promoted.



The basic functions involved in reviewing draft projects and viewing release projects is essentially the same. How you go about it is significantly improved.

The new Adobe Flash viewer provides a zoom function and a navigation compass for moving around the diagram.

You can hide the project navigation tree with the “Hide Project” button, to get a bigger area to move around in while exploring your diagram.

There is the “Show Attributes” button which provides quick access to process level attributes.

Adding and editing comments

- Popup menus and dialogs for easy access to the edit and view functions

The image illustrates the process of adding and editing comments in a workflow. On the left, a workflow diagram shows a 'Route Request' task with a 'New Comment' popup menu. A yellow callout box labeled 'Remember to log in as Dick or Harry after the rule.' points to the workflow. A yellow callout box labeled 'Options for classifying comments' points to the 'Add Comment' dialog window. A yellow callout box labeled 'Popup menu' points to the 'New Comment' button, and another yellow callout box labeled 'Dialog window' points to the 'Add Comment' dialog. The dialog window shows the following fields:

- Item: Route Request
- Subject: [Text input field]
- Type: Problem (dropdown menu)
- Priority: Medium (dropdown menu)
- Status: Open (dropdown menu)
- Details: [Text area]
- Buttons: Attach a file, Add a link, Submit, Cancel

At the bottom of the slide, there is a footer with the text 'Overview' and '© 2008 IBM Corporation'.

Working with comments is easy with the use of popup menus and dialogs. There are also plenty of options for classifying your comments. They can be labeled as problems or suggestions, given a priority and even a state, such as open or closed.

Over a period of time there will be many comments added by the reviewers. To manage the wealth of comments, there is a comment widget that comes with a full range of filtering and ordering capabilities.

Show attributes

- The show attributes presents the modeling element attributes in using a format that is familiar to the business user using WebSphere Business Modeler

Attributes: Route Request

General Business Rules

Cost and revenue Identify the high-level business rules associated with the task.

Duration

Input

Output

Business Rules

Resources Specify which business rule should be used by default and dates. Dates are set in local time zones, so the scheduling occurs in the local time zone.

Organizations

Classifiers

Attachments

Business rule Description

CostBasedRoutingRule Route the request

Name CostBasedRoutingRule

Description Route the request based on the cost

Rule Templates If Then Rules

Definition

Template name	Rule condition	Rule action	Template description
Level1Template	If the cost is less than or equal to 'Break Over Cost,'	route the request to the level 1 specialist	
Level2Template	If the cost is greater than 'Break Over Cost,'	route the request to the level 2 specialist	

Rule parameters

Parameter name	Type	Description
Break Over Cost	Float	

Return

Overview © 2008 IBM Corporation

Inspecting and understanding the attributes associated with a modeling element is much easier with the new popup dialog approach. The need to scroll around and resize Web pages is greatly reduced.

Select the link for the CostBasedRoutingRule to bring up the details of the business rule, right in place. The interaction is much smoother and inline with the way it works in WebSphere Business Modeler or WebSphere Integration Developer, when browsing a business rule.

Summary

- WebSphere Business Process Modeler Publishing Server V6.2
 - ▶ Same basic function
 - ▶ New *Business Space* user interface
 - ▶ Added flexibility of *Business Space*
 - ▶ More efficient and easier to use



WebSphere Business Modeler Publishing Server just got a lot better with V6.2. Much of the improvements came along with the new V6.2 Business Space but there are also significant improvements due to the re-architecting of the widgets to take advantage of new Web 2.0 features.

Performance is improved and navigating large complex diagram is made easier. Swimlane views are now available, and there are tools to manage the viewing area and to manage the comments associated with modeling projects.

Feedback

Your feedback is valuable

You can help improve the quality of IBM Education Assistant content to better meet your needs by providing feedback.

- Did you find this module useful?
- Did it help you solve a problem or answer a question?
- Do you have suggestions for improvements?

Click to send e-mail feedback:

mailto:iea@us.ibm.com?subject=Feedback_about_WBPMv62_PubServer_Overview.ppt

This module is also available in PDF format at: ..\\WBPMv62_PubServer_Overview.pdf



You can help improve the quality of IBM Education Assistant content by providing feedback.

Trademarks, copyrights, and disclaimers

IBM, the IBM logo, ibm.com, and the following terms are trademarks or registered trademarks of International Business Machines Corporation in the United States, other countries, or both: WebSphere

If these and other IBM trademarked terms are marked on their first occurrence in this information with a trademark symbol (® or ™), these symbols indicate U.S. registered or common law trademarks owned by IBM at the time this information was published. Such trademarks may also be registered or common law trademarks in other countries. A current list of other IBM trademarks is available on the Web at "Copyright and trademark information" at <http://www.ibm.com/legal/copytrade.shtml>

Adobe, are either registered trademarks or trademarks of Adobe Systems Incorporated in the United States, other countries, or both.

Linux is a registered trademark of Linus Torvalds in the United States, other countries, or both.

Other company, product, or service names may be trademarks or service marks of others.

Product data has been reviewed for accuracy as of the date of initial publication. Product data is subject to change without notice. This document could include technical inaccuracies or typographical errors. IBM may make improvements or changes in the products or programs described herein at any time without notice. Any statements regarding IBM's future direction and intent are subject to change or withdrawal without notice, and represent goals and objectives only. References in this document to IBM products, programs, or services does not imply that IBM intends to make such products, programs or services available in all countries in which IBM operates or does business. Any reference to an IBM Program Product in this document is not intended to state or imply that only that program product may be used. Any functionally equivalent program, that does not infringe IBM's intellectual property rights, may be used instead.

THE INFORMATION PROVIDED IN THIS DOCUMENT IS DISTRIBUTED "AS IS" WITHOUT ANY WARRANTY, EITHER EXPRESS OR IMPLIED. IBM EXPRESSLY DISCLAIMS ANY WARRANTIES OF MERCHANTABILITY, FITNESS FOR A PARTICULAR PURPOSE OR NONINFRINGEMENT. IBM shall have no responsibility to update this information. IBM products are warranted, if at all, according to the terms and conditions of the agreements (for example, IBM Customer Agreement, Statement of Limited Warranty, International Program License Agreement, etc.) under which they are provided. Information concerning non-IBM products was obtained from the suppliers of those products, their published announcements or other publicly available sources. IBM has not tested those products in connection with this publication and cannot confirm the accuracy of performance, compatibility or any other claims related to non-IBM products.

IBM makes no representations or warranties, express or implied, regarding non-IBM products and services.

The provision of the information contained herein is not intended to, and does not, grant any right or license under any IBM patents or copyrights. Inquiries regarding patent or copyright licenses should be made, in writing, to:

IBM Director of Licensing
IBM Corporation
North Castle Drive
Armonk, NY 10504-1785
U.S.A.

Performance is based on measurements and projections using standard IBM benchmarks in a controlled environment. All customer examples described are presented as illustrations of how those customers have used IBM products and the results they may have achieved. The actual throughput or performance that any user will experience will vary depending upon considerations such as the amount of multiprogramming in the user's job stream, the I/O configuration, the storage configuration, and the workload processed. Therefore, no assurance can be given that an individual user will achieve throughput or performance improvements equivalent to the ratios stated here.

© Copyright International Business Machines Corporation 2008. All rights reserved.

Note to U.S. Government Users - Documentation related to restricted rights-Use, duplication or disclosure is subject to restrictions set forth in GSA ADP Schedule Contract and IBM Corp.

