



IBM Software Group

# WebSphere® Business Monitor V6

## *Dimensions in the Business Measures Editor*



@business on demand.

© 2006 IBM Corporation  
Updated February 8, 2006

This presentation will cover dimensions in the Business Measures Editor.

## Goals

- Show how to use the Business Measures Editor to work with Dimensions

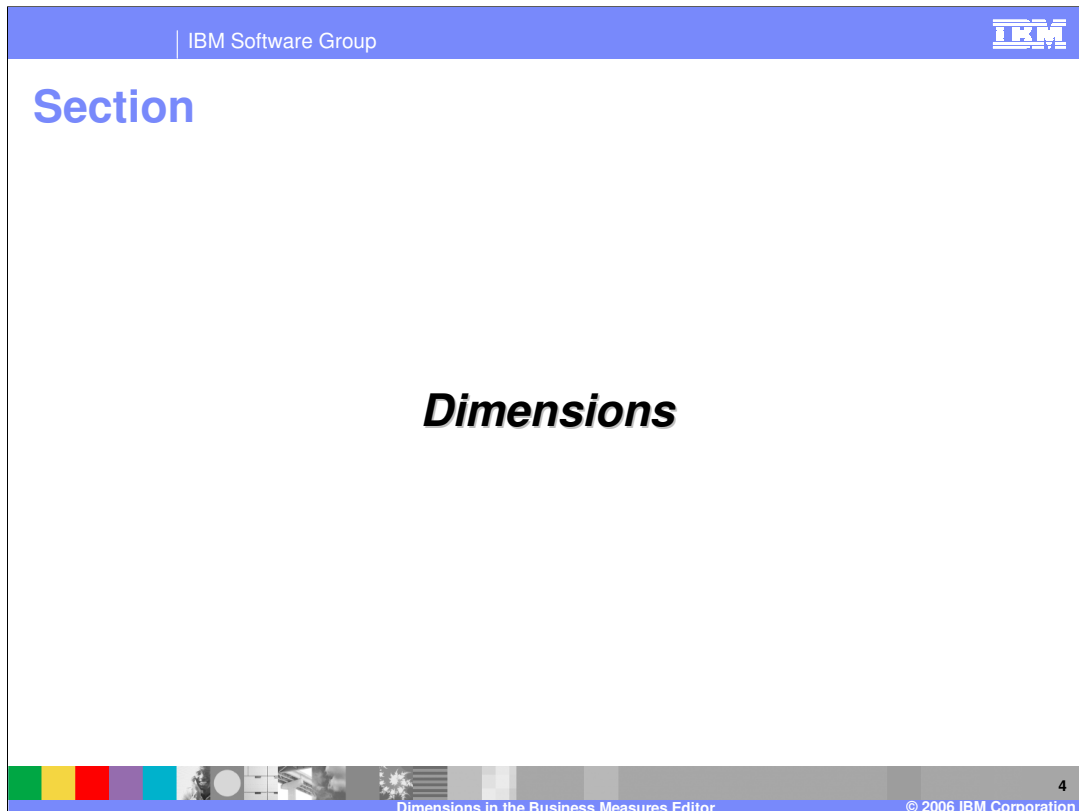
The goal of this presentation is to demonstrate how to use the Business Measures Editor with data dimensions.

## Agenda

- Define Dimensions
- Using dimensions in analysis
- Creating and configuring dimensions



The agenda of this presentation begins with defining dimensions, then covers using dimensions for analyzing data. The last section covers creating and configuring the dimensions in the Business Measures Editor.



Before describing how to configure Dimensions in WebSphere Business Modeler, it is necessary to provide an explanation of what they are and what they enable.

A 'Dimension' is a way in which you can group together your process instances.

For example, you could group order processes together by 'Customer Location'. You could group Utility Bill Complaint Processes by 'Account Type'.

You can perform powerful analysis of your data by looking at it 'by dimension'. For example OrderPrice **by customer**, Complaint Resolution Time **by Country**, or Call Handle Time **by employee**.

## What are Dimensions?

- Process data can be described in terms of:
  - ▶ Aggregated Quantitative Data (what you measure/count)
  - ▶ Dimensions (how you divide up the data)
- Dimensions provide structure that summarizes measures
- Example Aggregated Quantitative Data:
  - ▶ Average Order Price, Total Sales, Longest Shipping Time
  - ...
- Example Dimensions:
  - ▶ Customer, Address, Product ...



The Dimension is a grouping or structure for you to summarize data. Dimensional Analysis is a much more powerful mechanism for performing **aggregation** than the simple 'Aggregated Metrics/KPIs' that only look at **all finished instances**. Dimensions allow you to make similar calculations **for a specific group of processes**, where the Dimension defines what that group is.

Dimensional analysis takes some **quantitative data** (that is calculated for every process instance) and then **aggregates** it across a group of processes (where the group is defined by a dimension)

## What is Dimensional Analysis?

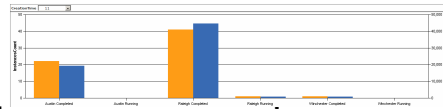
- Dimensional Analysis enables a breakdown of quantitative measures by some grouping (dimension)
- Typically this format:
  - ▶ 'function' of a 'measure' by a 'dimension'
- For example:
  - ▶ **Average of Profit by City**
  - ▶ **Total of Order Value by Customer**
  - ▶ **Maximum of Employee Salary by Time**



The pattern: 'function' of a 'measure' by a 'dimension' is a useful one to remember.

The 'function of a measure' gives you the **Aggregated Quantitative Data**

## Multi-Dimensional Analysis



- Look at measures by **more than one** grouping or dimension at a time
- **Average of Profit by Business Unit and by Country**
- Sophisticated analysis is done using the WebSphere Business Monitor dashboards (see Dashboards presentation)
- Business Measures Editor is used to define which measures to analyze and the dimensional groups to use



Multi-Dimensional Analysis is fully supported in WebSphere Business Monitor. You can look at measures by more than one grouping or dimension at a time and display the results graphically. The Business Measures Editor is used to define which groups to analyze.

## Dimension Levels

- Dimensions can (optionally) have multiple levels
- Location
  - ▶ Continent
    - Country
      - Region
      - City
- Time
  - ▶ Century
    - Year
      - Month
      - Day
- Product
  - ▶ Category
    - Name
- Levels are defined in the BME
  - ▶ Level 0 is the top level (Continent)
  - ▶ Level 1 is the second level (Country)
  - ▶ ...



By defining levels to a dimension, you enable the concepts of drill up and drill down – very powerful ways in which you can narrow down, or zoom out the particular subset of the overall data that you are looking at.



## Dimensional Levels – Drill Up/Down

- Due to the layered structure of dimensions, analysis can be done at different levels
- For example, analyze order value by Continent, Country, or City
- Drill-Down means to move down to a lower level of analysis
  - ▶ Drill-Down on Country to see information by City
- Drill-Up is the opposite
  - ▶ Drill-Up from City to see information by Country



If you set up the Location dimension and give it three levels, Continent, Country, City, then you can drill up and down to show data by continent at first, then by country after drilling down, and then by City after drilling down further still.

## Defining and Using Dimensions

- Dimensions are defined in the BME
- WebSphere Business Monitor then uses these definitions to create structured data stores (DB2<sup>®</sup> Cube Views) using star schemas
- Runtime data is captured, analyzed and persisted into these structured data stores
- WebSphere Business Monitor dashboards allow the user to graphically display and interactively analyze this data



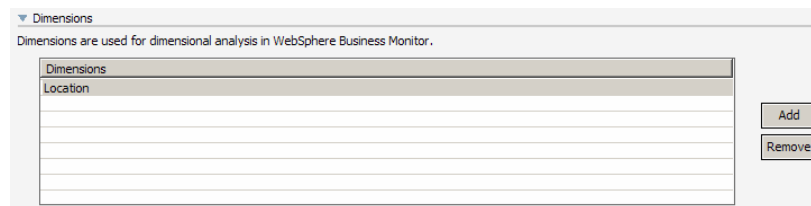
In the Business Measures Editor it is only necessary to define all the dimensions and their layers. In the WebSphere Business Monitor you start to do all the analysis against each dimension – determining what drill down you want to look at that day. The Business Measures Editor defines the dimensional structure only, such as the dimensions and their layers.

When you import the Business Measures Model to WebSphere Business Monitor, it will read the dimensions you defined and create database schemas to store information in the right format to support analysis against those dimensions.

The dashboards in WebSphere Business Monitor then display the data and your users can interact with the dashboard to perform whatever multi dimensional analysis they want to.

## Creating a Dimension

- The General page of the Attributes view in BME allows you to add Dimensions
- Simply add and name a Dimension



Defining a Dimension is simply a matter of giving the Dimension group a name. You subsequently will add the levels to it, and each level will need to be associated with some data.

An example might help to explain this. An in-built dimension is pre-defined and it is called 'Process State'. There is no such thing as a process that is in process state 'Process State'. This is just the title of the dimension. The 'Process State' dimension has one level called 'state' which can be either 'completed' or 'running'.

Take 'Location' as another example. This is the **title** of the Dimension, but it's first level is 'Country' and then 'City'.

So defining a Dimension is just a matter of giving a name.

## Configuring Dimensions

- Instance Measures (Metric, Stopwatch, Counter) are used for dimensional analysis
- In the Business Measures Editor, each of these instance measures has a '**Dimensional analysis and database schema settings**' section
- In this section, to use dimensional analysis, define each instance measure as either:
  - ▶ 'Quantitative data in dimensional analysis' (measure)
  - ▶ 'Aggregation group in dimensional analysis' (dimension)



Remember that Dimensions are used to **aggregate instance measures for a group of processes**. So you need to specify which **instance measures** you want to aggregate. And you also need to specify which **instance measures** you will use for your **groups or Dimensions**.

In the attributes for the instance measure types, Metric, Stopwatch or Counter, you have a section for setting the Dimension properties.

## Example Aggregated Quantitative Measure

- OrderPrice is a measure that will be analyzed by dimension

This measure is quantitative data

Name of measure

Function to calculate measure

General Metric

Metrics

This section provides information a

Name	Type
City	String
Country	String
OrderPrice	Float

Dimensional analysis and database schema settings

This section provides details about how the selected business measure will be represented in the dimensional analysis view of WebSphere Business Monitor and in the database.

Usage in WebSphere Business Monitor: Quantitative data in dimensional analysis

Create index to optimize database performance for sorting based on this measure in WebSphere Business Monitor

Maximum string length: 0

Allocate additional space in database to accommodate Unicode string for globalization

Set as part of dimension key

Dimension: [ ]

Aggregation group level: 0

Aggregation measure name	Aggregation function
Total Cost of Orders	Sum

Add

Remove

13

Dimensions in the Business Measures Editor © 2006 IBM Corporation

Here is an example of the Dimension settings for a Metric.

If you choose that this metric is used as **quantitative data** then you must specify how you will aggregate that quantitative data by providing an **Aggregation Function** and the name of this aggregated measure

IBM Software Group IBM

## Example Dimension

- City is the second level in the Location dimension – levels start at zero
- Length 50 configures database constraint

**Dimensional analysis and database schema settings**

This section provides details about how the selected business measure will be represented in the dimensional analysis view of WebSphere Business Monitor and in the database.

**Usage in WebSphere Business Monitor** | Aggregation group in dimensional analysis

Create index to optimize database performance for sorting based on this measure in WebSphere Business Monitor

Maximum string length: 50 Set max string length to 50

Allocate additional space in database to accommodate Unicode string for globalization

Set as part of dimension key Part of the Location dimension

Dimension: Location

Aggregation group level: 1

2<sup>nd</sup> level of the dimension

Part of the dimension key

This measure is a Dimension

Name	Type
City	String
Country	String
OrderPrice	Float

Dimensions in the Business Measures Editor 14 © 2006 IBM Corporation

You specify that a measure is to be used in a Dimension by saying that it is part of an 'Aggregation Group'

You must also specify some basic information for the database so that Monitor will know what kind of schema to generate (this is quite technical for the Modeler product, but it is the only place you could define it as this model will be exported from Modeler and then be deployed immediately into Monitor (there are no more tools involved))

Select which dimension the metric is used for (for example Location is the dimension created earlier).

Notice the 'level'. This says what level within that dimension. The top level is 0, then 1 is the next down and so on.

Specify which fields belong to the dimension key .You need to set as many fields as possible to guarantee uniqueness. For example there might be a city called England in one country, and yet England is also a country itself. So displaying all orders for England does not specify enough information. So you have to combine City and Country (make both part of the dimension key) to guarantee uniqueness.

## Summary

- Defined Dimensions
- Examined using dimensions in analysis
- Explored creating and configuring dimensions



In summary, this presentation has described dimensions and how they are used in data analysis, and looked at creating and configuring dimensions within the Business Measures Editor.

## Trademarks, Copyrights, and Disclaimers

The following terms are trademarks or registered trademarks of International Business Machines Corporation in the United States, other countries, or both:

IBM	CICS	IMS	MQSeries	Tivoli
IBM (logo)	Cloudscape	Informix	OS/390	WebSphere
e(logo)/business	DB2	iSeries	OS/400	xSeries
AIX	DB2 Universal Database	Lotus	pSeries	zSeries

Java and all Java-based trademarks are trademarks of Sun Microsystems, Inc. in the United States, other countries, or both.

Microsoft, Windows, Windows NT, and the Windows logo are registered trademarks of Microsoft Corporation in the United States, other countries, or both.

Intel, ActionMedia, LANDesk, MMX, Pentium and ProShare are trademarks of Intel Corporation in the United States, other countries, or both.

UNIX is a registered trademark of The Open Group in the United States and other countries.

Linux is a registered trademark of Linus Torvalds.

Other company, product and service names may be trademarks or service marks of others.

Product data has been reviewed for accuracy as of the date of initial publication. Product data is subject to change without notice. This document could include technical inaccuracies or typographical errors. IBM may make improvements and/or changes in the product(s) and/or program(s) described herein at any time without notice. Any statements regarding IBM's future direction and intent are subject to change or withdrawal without notice, and represent goals and objectives only. References in this document to IBM products, programs, or services does not imply that IBM intends to make such products, programs or services available in all countries in which IBM operates or does business. Any reference to an IBM Program Product in this document is not intended to state or imply that only that program product may be used. Any functionally equivalent program, that does not infringe IBM's intellectual property rights, may be used instead.

Information is provided "AS IS" without warranty of any kind. THE INFORMATION PROVIDED IN THIS DOCUMENT IS DISTRIBUTED "AS IS" WITHOUT ANY WARRANTY, EITHER EXPRESS OR IMPLIED. IBM EXPRESSLY DISCLAIMS ANY WARRANTIES OF MERCHANTABILITY, FITNESS FOR A PARTICULAR PURPOSE OR NONINFRINGEMENT. IBM shall have no responsibility to update this information. IBM products are warranted, if at all, according to the terms and conditions of the agreements (e.g., IBM Customer Agreement, Statement of Limited Warranty, International Program License Agreement, etc.) under which they are provided. Information concerning non-IBM products was obtained from the suppliers of those products, their published announcements or other publicly available sources. IBM has not tested those products in connection with this publication and cannot confirm the accuracy of performance, compatibility or any other claims related to non-IBM products. IBM makes no representations or warranties, express or implied, regarding non-IBM products and services.

The provision of the information contained herein is not intended to, and does not, grant any right or license under any IBM patents or copyrights. Inquiries regarding patent or copyright licenses should be made, in writing, to:

IBM Director of Licensing  
IBM Corporation  
North Castle Drive  
Armonk, NY 10504-1785  
U.S.A.

Performance is based on measurements and projections using standard IBM benchmarks in a controlled environment. All customer examples described are presented as illustrations of how those customers have used IBM products and the results they may have achieved. The actual throughput or performance that any user will experience will vary depending upon considerations such as the amount of multiprogramming in the user's job stream, the I/O configuration, the storage configuration, and the workload processed. Therefore, no assurance can be given that an individual user will achieve throughput or performance improvements equivalent to the ratios stated here.

© Copyright International Business Machines Corporation 2005,2006. All rights reserved.

Note to U.S. Government Users - Documentation related to restricted rights-Use, duplication or disclosure is subject to restrictions set forth in GSA ADP Schedule Contract and IBM Corp.