



IBM Software Group

WebSphere® Business Monitor V6

Using the Business Measures Editor



@business on demand.

© 2006 IBM Corporation
Updated February 7, 2006

This presentation will introduce using the Business Measures Editor.

Goals

- Show how to use the Business Measures Editor

This presentation will cover how to use the Business Measures Editor to create and work with business measures models

Agenda

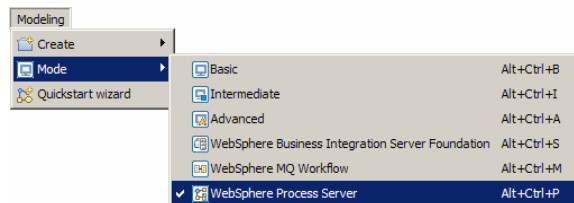
- Selecting a modeling mode
- Creating a model
- Working with a Business Measures Model
- Tour of the interface



The agenda for this presentation is simply to cover using the Business Measures Editor to create and work with a Business Measures Model.

Modeling Mode

- Different modeling modes available
 - ▶ Basic, Intermediate, Advanced
- Additional level beyond Advanced – target runtime:
 - ▶ WebSphere Business Integration Server Foundation
 - ▶ WebSphere MQ Workflow
 - ▶ WebSphere Process Server

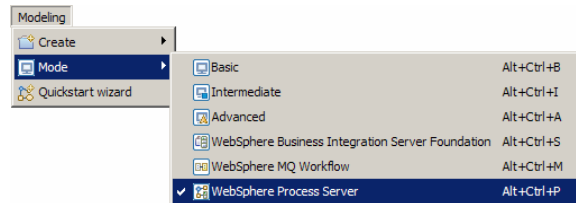


WebSphere Business Modeler has the concept of Modeling Modes. They are selected using the menu at the top

The next slide explains how these modes affect Business Measures Editor.

Modeling Mode – Business Measures

- Business Measures Modeling available in all modes
- More business measures options are shown in more advanced modes



- Optionally select WebSphere Process Server runtime for additional technical implementation details



WebSphere Process Server is the only runtime that can be monitored for Version 6.0. Therefore it does not make sense to select the WebSphere Business Integration-Server Foundation or WebSphere MQ Workflow modes.

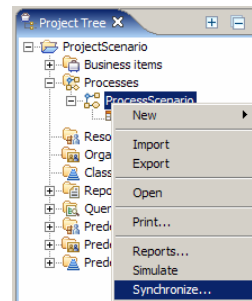
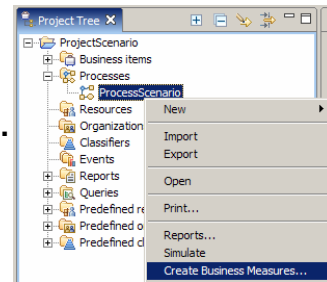
For the Business Measures Editor, selecting WebSphere Process Server mode only adds one feature beyond the Advanced mode – the ‘technical diagram’ view.

The other runtime modes are not related to the Business Measures Editor and are only used for other modeling capabilities in Modeler V6.

The WebSphere Process Server mode does not provide anything useful beyond the Advanced mode, although you can look into low level technical diagrams of the model if you wish in this mode (using the Technical Diagram view). The Advanced mode is sufficient for almost all use scenarios

Creating Business Measures Model

- Right click on process model and select 'Create Business Measures..'
- If updating existing measures select 'Synchronize...'



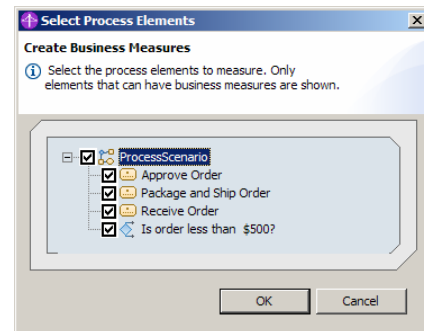
Create your process model and other types of model using the other features of WebSphere Business Modeler V6. You must have created the process model first before creating the Business Measures Model.

To create a Business Measures Model for the first time, right click and select 'create business measures'. If you have already created a measures model for this process then any subsequent time you right click, the option will instead say 'synchronize' which will update the business measures model with any changes you made in the process model (it will synchronize the process and business measures models). Be wary of **major** changes that may not be synchronizable.

When you first create a model, it will create what is called the 'default Business Measures Model'. Once the default model is created, you use the Business Measures Editor to add your own business measures

Creating Business Measures Model

- A wizard then asks which elements in the business process you want to measure
 - ▶ Default is the whole process (all elements)
- Deselecting some elements will improve performance
 - ▶ Fewer events for Monitor to analyze at runtime
- Cannot measure against elements that are not selected



After selecting 'Create Business Measures...', a wizard prompts you to specify which of the activities or tasks within the process that you want to measure against. The default is all items which is a good starting point. You can select or deselect activities later on from the Diagram view in the Business Measures Editor.

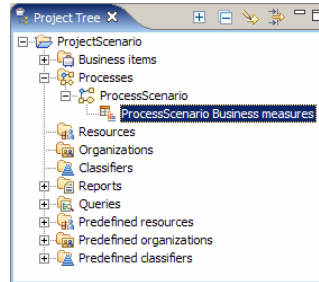
You cannot calculate measures against any activities are not selected. For example, if you wanted to capture the output value from a task in the process, you could not do this if you didn't select that task in your business measures model because no events from that task would be available at runtime.

You should also be aware that there are default measures within the Business Measures Model automatically, such as 'process working duration', that are calculated automatically by measuring the time taken for each activity and adding them all together. Any activity that is not measured in your model will not contribute its working duration to such calculations, so should be careful about the deselecting activities from the model.

However, of course, deselecting tasks will allow the monitor to interpret fewer events at runtime, improving performance.

Working with Business Measures Model

- Business Measures Model appears as a sub-node under the process model



- Double click or right click and select Open to launch BME
- Select and press Delete to delete

Once the Business Measures Model is created, it then appears as an extra item in the Project Tree as shown.

Default Business Measures Model

- A default Business Measures model is created when you 'Create Business Measures ...'
 - ▶ Contains built-in measures
 - Working Duration, Process Elapsed Time, InstancesCount ...
- You can then add more business measures to your model using the Business Measures Editor



The default Business Measures Model already has basic measures information automatically embedded into it. You will then use Business Measures Editor to add all of your custom measures that are relevant **for your business**

These built-in measures allow you to interpret basic information like the timing and number of your processes. See below for more details:

Built-in Dimensions:

Start Time

Process State

CreationTime

TerminationTime

Measures

Built in Measures: (they are grouped under the 'Measures' dimension)

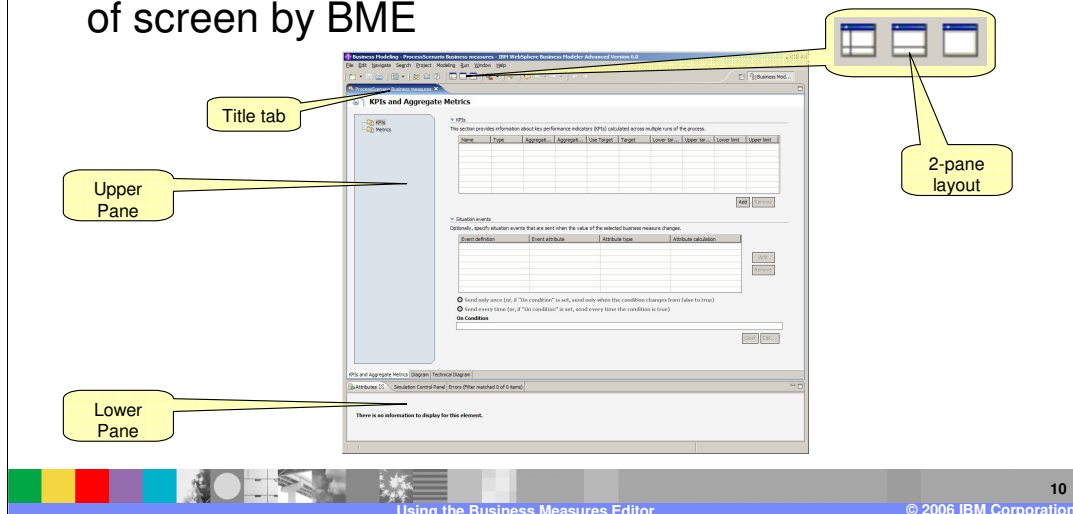
InstancesCount

Elapsed Duration

Working Duration

Getting started in the BME

- BME editor uses two panes – upper and lower
- Use the ‘two-pane layout’ option to maximise use of screen by BME



You can also maximise any editor by double clicking its title tab, and then restore its original size by double clicking its title tab again. This is true for all editors in any Eclipse based tool (such as WebSphere Business Modeler or WebSphere Integration Developer)

Notice that there are two halves to the editor – the upper and the lower panes. Each can show different information at different times. The next few slides explore each half of the editor

BME – Upper Pane tabs

KPIs and Aggregate Metrics | Diagram | Technical Diagram

- KPIs and Aggregate Metrics
 - ▶ Measures that are calculated by looking at all of the processes that have ever completed
- Diagram
 - ▶ Read-only process model
 - ▶ Icons indicate where measures have been added
- Technical Diagram
 - ▶ WebSphere Process Server modeling mode only
 - ▶ Low level model implementation information



11

Using the Business Measures Editor

© 2006 IBM Corporation

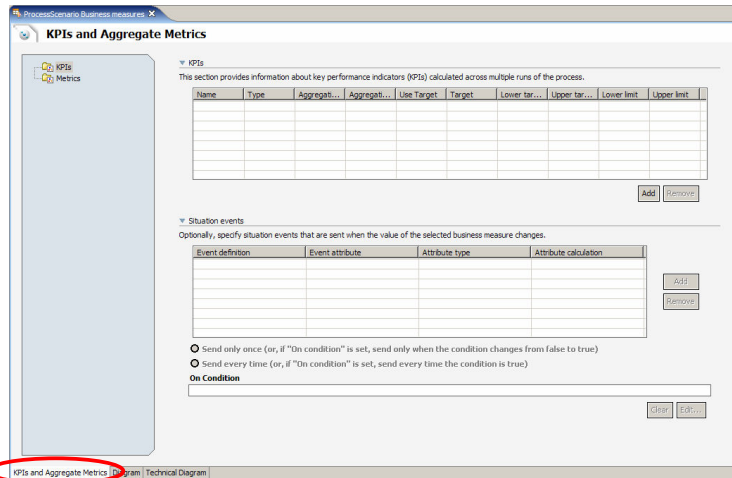
First notice the upper pane for Business Measures Editor. It has three tabs as shown, and you can select any one at any time.

The Technical Diagram is primarily useful to IBM support. It is a technical equivalent of what you see in the other panes of the editor.

The upper tab selection you make also affects what is seen in the lower tab. The Diagram tab is where most of the editing is done and show the most information below. The Aggregates and KPIs tab is just for composing simple higher level measures from the instance measures that were defined when looking at the Diagram tab

Upper Pane – KPIs and Aggregate Metrics tab

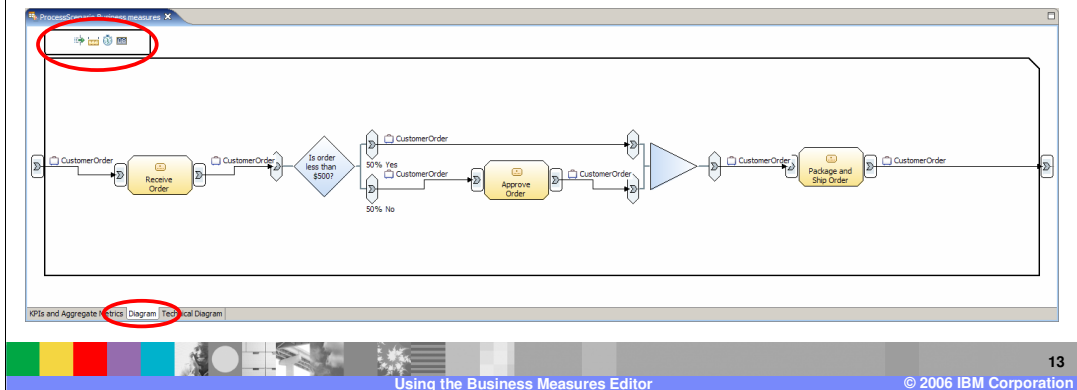
- Shows KPIs and Metrics that are calculated by looking at all finished process instances



In this tab there is nothing shown in the lower pane at the same time. This tab is where you define what measures you want to calculate that take account of all finished processes (for example average order price across all finished orders). More explanation is coming..

Upper Pane – Diagram tab

- Shows read-only picture of process model
- Helps visualize what measures to define
- Icons indicate when measures have been defined

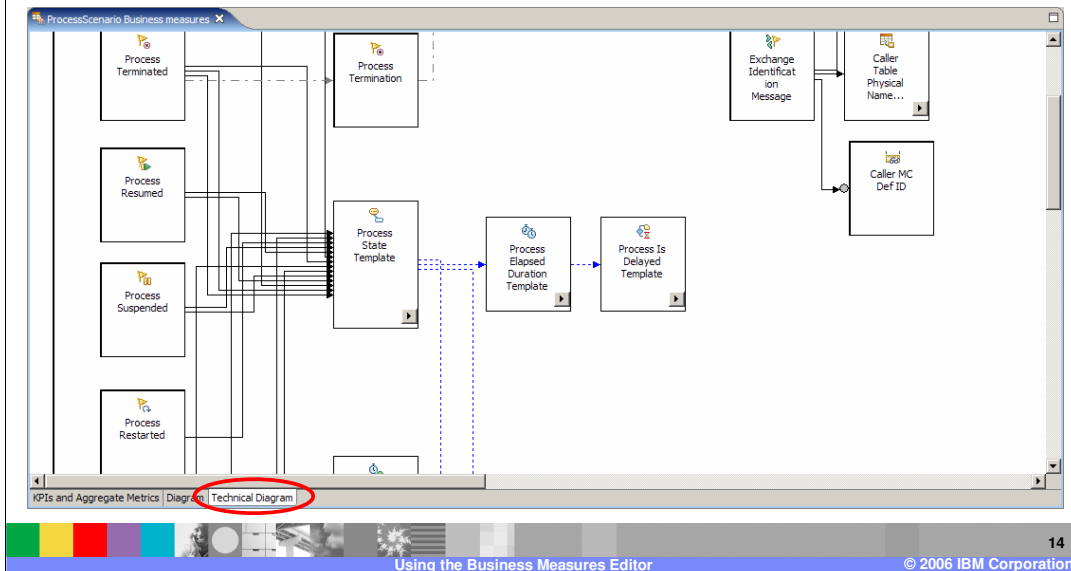


The Diagram tab is what you will see most of the time. When this is active you can see the picture of the process model (cannot edit it though!) and you can begin defining all your instance measures (measures that are calculated for every single instance of the process – see later) in the lower pane.

The icons at the top indicate whether you have one or more measures defined (different icon for each measure type, like metric, stopwatch, counter, trigger).

Upper Pane – Technical Diagram tab

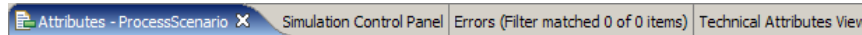
- Technical representation of Measures Model



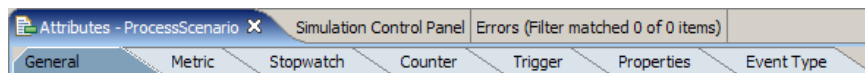
Technical Diagram is of limited use but is shown here anyway for completeness.

BME – Lower Pane – Attributes tab

- Select 'Diagram' view in upper pane
 - ▶ Lower pane not used for 'KPIs and Aggregate Metrics'
- Select 'Attributes' view in lower pane



- Business Measures are defined and shown within the Attributes view using a second level of tabs



If you select the 'KPIs and Aggregate Metrics' view in the upper pane then there are no Attributes to show so the lower pane is empty. You should select Diagram in the upper pane before using the lower pane.

The view that is used by the Business Measures Editor is the 'Attributes view'. Also present in the lower pane are the 'Simulation Control Panel', 'Errors' and 'Technical Attributes View' – all standard modeler views that are not specific to the Business Measures Editor.

Selecting the Attributes tab reveals a second set of tabs – General, Metric, Stopwatch and so on.

The number of tabs in this second level depends on the modeling mode – this slide shows the advanced mode where all are visible.

Summary

- Described selecting a modeling mode
- Creating and working with a model
- Described Business Measures Editor panes & tabs



In summary, this presentation covered selecting a modeling mode and creating and working with a Business Measures Model in the Business Measures Editor.

Trademarks, Copyrights, and Disclaimers

The following terms are trademarks or registered trademarks of International Business Machines Corporation in the United States, other countries, or both:

IBM	CICS	IMS	MQSeries	Tivoli
IBM (logo)	Cloudscape	Informix	OS/390	WebSphere
e(logo)/business	DB2	iSeries	OS/400	xSeries
AIX	DB2 Universal Database	Lotus	pSeries	zSeries

Java and all Java-based trademarks are trademarks of Sun Microsystems, Inc. in the United States, other countries, or both.

Microsoft, Windows, Windows NT, and the Windows logo are registered trademarks of Microsoft Corporation in the United States, other countries, or both.

Intel, ActionMedia, LANDesk, MMX, Pentium and ProShare are trademarks of Intel Corporation in the United States, other countries, or both.

UNIX is a registered trademark of The Open Group in the United States and other countries.

Linux is a registered trademark of Linus Torvalds.

Other company, product and service names may be trademarks or service marks of others.

Product data has been reviewed for accuracy as of the date of initial publication. Product data is subject to change without notice. This document could include technical inaccuracies or typographical errors. IBM may make improvements and/or changes in the product(s) and/or program(s) described herein at any time without notice. Any statements regarding IBM's future direction and intent are subject to change or withdrawal without notice, and represent goals and objectives only. References in this document to IBM products, programs, or services does not imply that IBM intends to make such products, programs or services available in all countries in which IBM operates or does business. Any reference to an IBM Program Product in this document is not intended to state or imply that only that program product may be used. Any functionally equivalent program, that does not infringe IBM's intellectual property rights, may be used instead.

Information is provided "AS IS" without warranty of any kind. THE INFORMATION PROVIDED IN THIS DOCUMENT IS DISTRIBUTED "AS IS" WITHOUT ANY WARRANTY, EITHER EXPRESS OR IMPLIED. IBM EXPRESSLY DISCLAIMS ANY WARRANTIES OF MERCHANTABILITY, FITNESS FOR A PARTICULAR PURPOSE OR NONINFRINGEMENT. IBM shall have no responsibility to update this information. IBM products are warranted, if at all, according to the terms and conditions of the agreements (e.g., IBM Customer Agreement, Statement of Limited Warranty, International Program License Agreement, etc.) under which they are provided. Information concerning non-IBM products was obtained from the suppliers of those products, their published announcements or other publicly available sources. IBM has not tested those products in connection with this publication and cannot confirm the accuracy of performance, compatibility or any other claims related to non-IBM products. IBM makes no representations or warranties, express or implied, regarding non-IBM products and services.

The provision of the information contained herein is not intended to, and does not, grant any right or license under any IBM patents or copyrights. Inquiries regarding patent or copyright licenses should be made, in writing, to:

IBM Director of Licensing
IBM Corporation
North Castle Drive
Armonk, NY 10504-1785
U.S.A.

Performance is based on measurements and projections using standard IBM benchmarks in a controlled environment. All customer examples described are presented as illustrations of how those customers have used IBM products and the results they may have achieved. The actual throughput or performance that any user will experience will vary depending upon considerations such as the amount of multiprogramming in the user's job stream, the I/O configuration, the storage configuration, and the workload processed. Therefore, no assurance can be given that an individual user will achieve throughput or performance improvements equivalent to the ratios stated here.

© Copyright International Business Machines Corporation 2005,2006. All rights reserved.

Note to U.S. Government Users - Documentation related to restricted rights-Use, duplication or disclosure is subject to restrictions set forth in GSA ADP Schedule Contract and IBM Corp.