

Installing WebSphere Business Monitor V6.1

Advanced Network Deployment installation - Scenario 3

What this exercise is about	2
Lab Requirements	2
What you should be able to do	2
Exercise Instructions	3
Introduction	4
Part 1: Preparing for the Monitor Dmgr environment (Machine 1).....	6
Part 2: Installing Monitor Deployment manager and create MONITOR database.....	8
Manually create the MONITOR database.....	20
Part 3: Preparing the Monitor federated server environment (Machine 2)	21
Part 4: Installing Monitor Server in a Federated Environment (Machine 2).....	23
Part 5: Preparing for Portlet-based dashboards installation (Machine 3)	33
Part 6: Installing Portlet-based dashboards including Alphablox views (Machine 3)	34
What you did in this exercise	45
Task 2: Install WebSphere Portal Server V6.0 and upgrade to V6.0.1.1	46
1. Updating WebSphere Application Server V6.0.2.9 base to V6.0.2.17	57
2. Updating WebSphere Portal Server V6.0 with fix pack 6.0.1.1	63
Appendix 1: Troubleshooting	68

What this exercise is about

The objective of this lab is to provide instructions for installing WebSphere Business Monitor V6.1 product in a three machine scenario, which is a Monitor Deployment Manager Environment using the '**Advanced**' installation type.

Scenario 3: Three machine scenario in a monitor deployment manager environment

- **Machine 1:-** WebSphere Business Monitor V6.1 in a Deployment Manager environment and DB2 environment with MONITOR database
- **Machine 2:-** WebSphere Business Monitor V6.1 in a federated server environment
- **Machine 3:-** WebSphere Business Monitor V6.1 with Portlet-based dashboards including Alphablox views

Lab requirements

List of system and software required for the student to complete the lab:

- WebSphere Business Monitor V6.1
- WebSphere Application Server V6.1.0.13
- WebSphere Portal Server V6.0.1.1
 - WebSphere Portal Server V6.0
 - WebSphere Application Server V6.0.2 Fix Pack 17
 - WebSphere Application Server V6.0.2 JDK Fix Pack 21
 - WebSphere Portal Server Fix Pack 6011
- DB2 ESE V8.2.6 or V9.1
- Alphablox V9.5
- Information Center

What you should be able to do

At the end of this lab you should be able to do the following based on the options you choose:

- Install WebSphere Application Server V6.1.0.13 in a monitor deployment manager environment (Machine 1)
- Create MONITOR database (Machine 1)
- Install WebSphere Application Server V6.1.0.13 in a federated server environment (Machine 2)
- Install WebSphere Portal Server V6.0.1.1 for Portlet-based dashboards (Machine 3)

IBM WEBSHERE BUSINESS MONITOR 6.1 – LAB EXERCISE

Exercise instructions

Some instructions in this lab are Windows® operating-system specific. If you plan on running the lab on an operating-system other than Windows, you will need to run the appropriate commands, and use appropriate files (.sh or .bat) for your operating system. The directory locations are specified in the lab instructions using symbolic references, as follows:

Reference variable	Windows location	AIX®/UNIX® location
Monitor deployment manager environment (Machine 1)		
<WAS61_HOME>	C:\IBMWebSphere\Monitor	
<DMGR_HOME>	<WAS61_HOME>\profiles\Dmgr01	
<DB2_HOME>	C:\IBM\DB2\SQLLIB	
Monitor federated node environment (Machine 2)		
<WAS61_HOME>	C:\IBMWebSphere\Monitor	
<WBM_PROFILE_HOME>	<WAS61_HOME>\profiles\Custom01	
Portlet-based dashboard (Machine 3)		
<WAS602_HOME>	C:\IBMWebSphere\AppServer	
<WP_PROFILE_HOME>	C:\IBMWebSphere\profiles\wp_profile	
<PORTAL_HOME>	C:\IBMWebSphere\PortalServer	
<ALPHABLOX_HOME>	<WP_PROFILE_HOME>\Alphablox	

Windows users' note: When directory locations are passed as parameters to a Java™ program such as EJBdeploy or wsadmin, it is necessary to replace the backslashes with forward slashes to follow the Java convention.

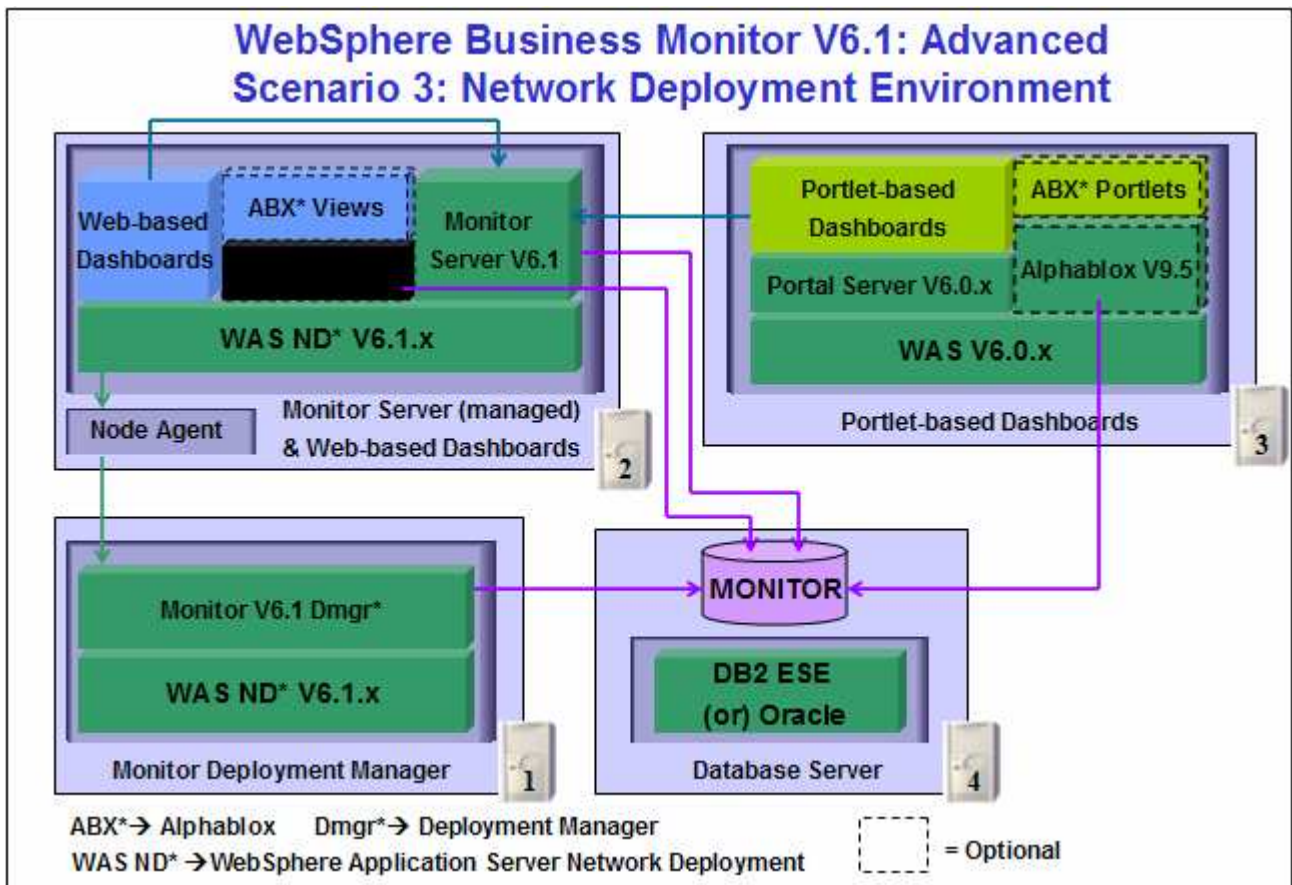
Introduction

WebSphere Business Monitor V6.1 Advanced installation allows you to customize the installation of the Monitor components on one or multiple machines and it can be used for small to large production systems.

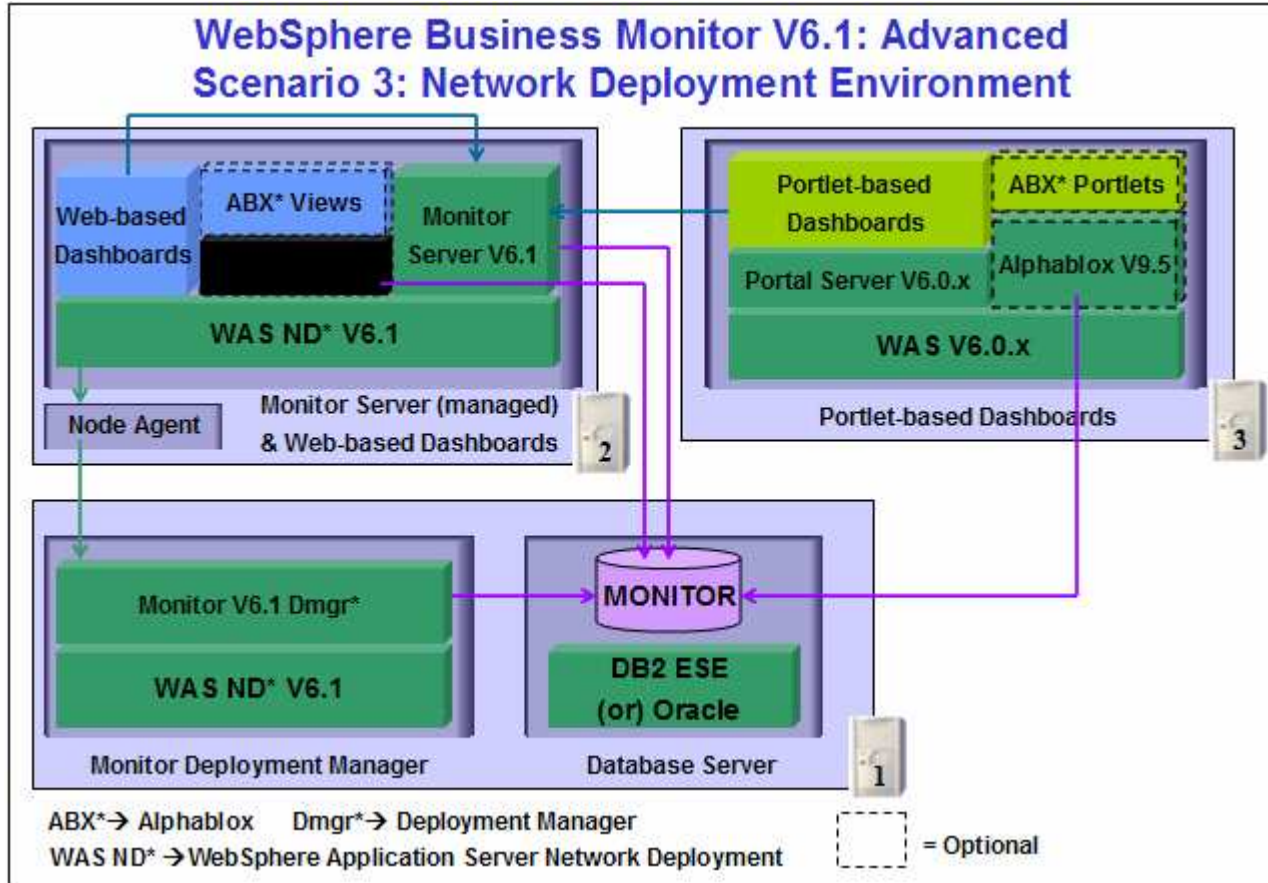
WebSphere Application Server V6.1 is the only mandatory prerequisite for WebSphere Business Monitor V6.1 installation. In an advanced installation type, the InstallShield wizard installs the WebSphere Application Server V6.1 and silently uses the customized profile management tool to create and augment the WebSphere Business Monitor profiles. The advanced installation type supports the standard profile management for network deployment flexibility.

To install Portlet-based dashboards, the WebSphere Portal Server V6.0.1.1 must be installed as a prerequisite. The Installation Wizard for advanced installation type does not let you select the option to install Portlet-based dashboards unless it detects an existing Portal Server installation.

The following diagram depicts how the 'Advanced' installation type takes advantage of installing Monitor Server in a deployment manager environment and create MONITOR database on machine one, monitor server installation in a federated server environment in which the installation wizard creates a monitor node, federates it to the monitor deployment manager on the second and the Portlet-based dashboards including Alphablox views on the third. In this scenario, the InstallShield wizard uses Type 4 database driver to make connections to the MONITOR database. In this scenario the MONITOR database is treated as remote to all machines even though the DB2 server lies local to the monitor deployment manager. The MONITOR database is created manually by running the database scripts.



IBM WEBSHERE BUSINESS MONITOR 6.1 – LAB EXERCISE



Important: The monitor InstallShield wizard does not create an instance of Alphablox V9.5 in a Monitor Deployment Manager and Federated server environment. You might want to create a Monitor Server cluster (WebSphere Application Server cluster) and then install Alphablox V9.5 in a clustered environment. Visit the Alphablox information center for more information.

Part 1: Preparing for the Monitor deployment manager environment (Machine 1)

In this part of the lab, the prerequisite software is obtained and extracted in such a way that an on-disk WebSphere Business Monitor V6.1 installation image is created.

Obtain the pre-requisite software and extract in such a way to create the correct on-disk structure for the Launchpad to run.

- ___ 1. The following are the archives needed to install the WebSphere Business Monitor V6.1

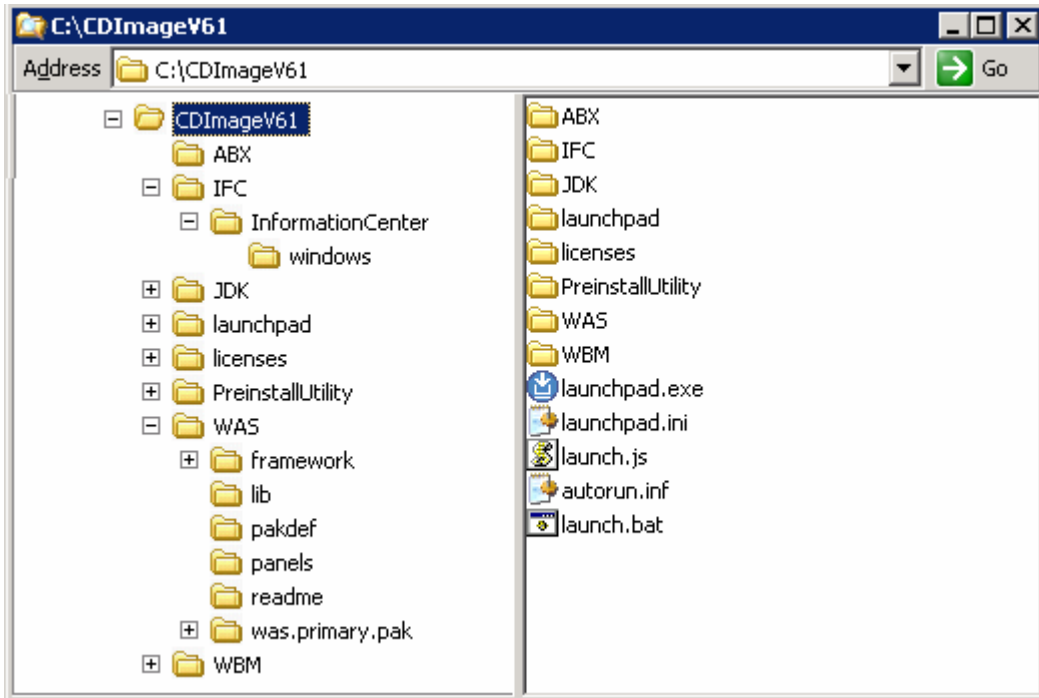
Product Name	File Name
WebSphere Business Monitor V6.1 Base Components for Windows 2003 (Monitor V61 Setup CD)	C186LEN.zip
WebSphere Application Server Network Deployment V6.1.0.13 for Windows	C187CML.zip
Alphablox V9.5 for Windows, AIX	C187GML.tar.gz
Information Center for Windows	IBM_Help_Win32.zip
DB2 Enterprise Server Edition V8.2.6 and V9.1 for Windows	ESE_v826.zip
	ESE_v91.zip

- ___ 2. Download all the installation archives to a directory, for example : C:\MonitorDriversV61\

- ___ a. Extract all of the archives into a directory named, for example, C:\CDImageV61\ to create an on-disk image and confirm that the directory structure was extracted correctly. It should appear similar to the picture shown below:

Note: Do not extract the **IBM_Help_Win32.zip** file. The Monitor installer expects a .zip file at <Monitor_Install_Image_Directory>\IFC\InformationCenter\windows location.

IBM WEBSHERE BUSINESS MONITOR 6.1 – LAB EXERCISE



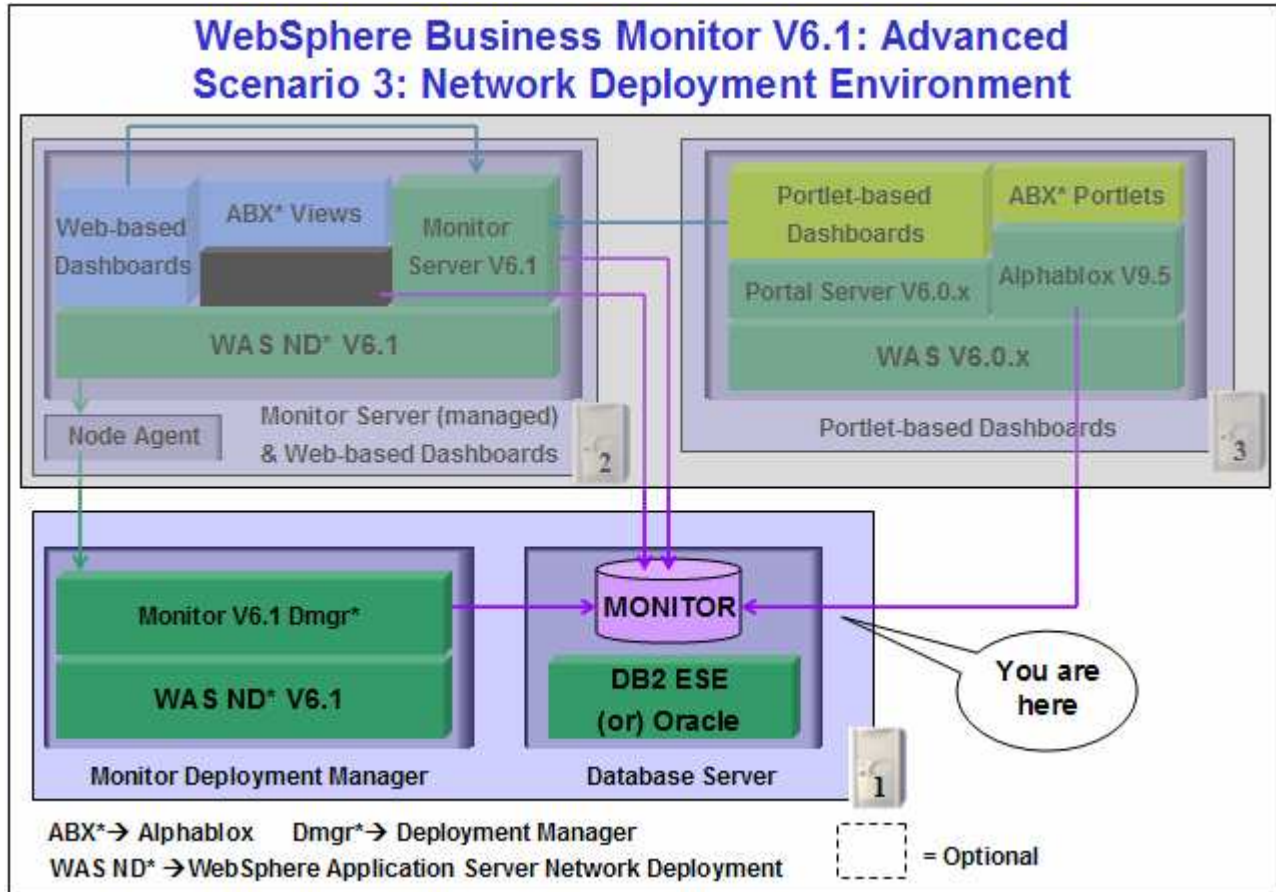
Note: Pre-requisite image location and folder name:

Executables should be placed directly under the directories specified above, so that 'install.exe' or 'install.sh' can be silently launched. Adding 'subdirectories' will prevent successful completion. Do not extract the IBM_Help_Win32.zip file.

InfoCenter - <Monitor_Install_Image_Directory>\IFC\InformationCenter\windows\IBM_Help_Win32.zip
WebSphere Application Server V6.1 - <Monitor_Install_Image_Directory>\WAS\
Alphablox V9.5 - <Monitor_Install_Image_Directory>\ABX\install.exe

Part 2: Installing Monitor Deployment manager and create MONITOR database

In this part of the lab, you will choose the option to install the Monitor server including Web-based dashboards in a deployment manager environment and manually create MONITOR database on a DB2 server considered as remote to the monitor deployment manager installation on machine one. In this process you are given the option to either create or use an existing database based on the database environment you choose. You can also choose between Type 2 or Type 4 database driver. In this lab you will use DB2 as the database environment and DB2 Type 4 driver to configure resources for the MONITOR database.



In this part of the lab on machine one, the InstallShield wizard installs the WebSphere Application Server V6.1.0.13, silently uses the customized Profile Management Tool to create and augment the WebSphere Business Monitor 'Deployment Manager' profile and installs Monitor Server and its components in a deployment manager environment.

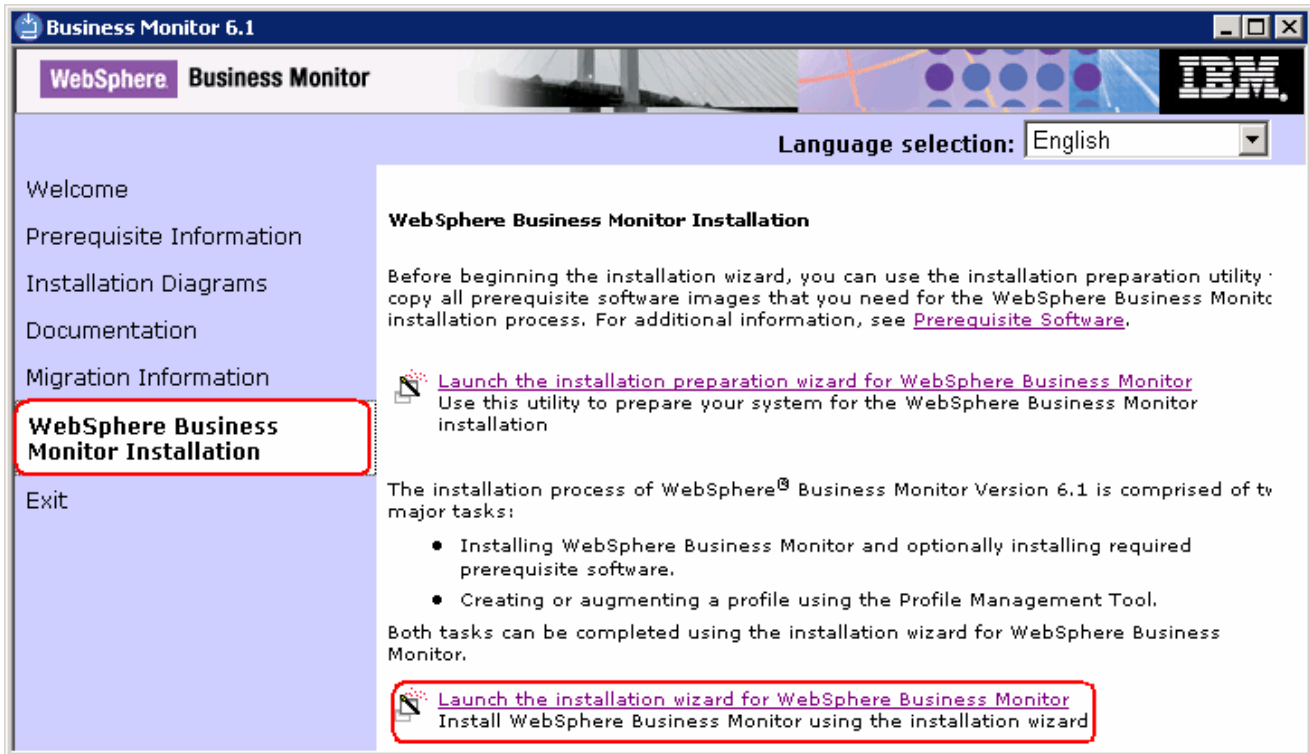
In this scenario the MONITOR database is treated as remote to all machines even though the DB2 server lies local to the monitor deployment manager. You will choose the 'Use existing database' option to create the required resources and configure connections to the existing MONITOR database. It is not mandatory that the MONITOR database exist at this time. The InstallShield wizard generates the database scripts to create the MONITOR database and you must manually run the scripts to create the database.

IBM WEBSHERE BUSINESS MONITOR 6.1 – LAB EXERCISE

Important: The monitor InstallShield wizard does not create an instance of Alphablox V9.5 in a Monitor Deployment Manger and Federated server environment. You might want to create a Monitor Server cluster (WebSphere Application Server cluster) and then install Alphablox V9.5 in a clustered environment. Visit the Alphablox information center for more information.

Follow the instructions below to complete the WebSphere Business Monitor V6.1 Advanced installation:

1. From the directory where all the pre-requisites and the Monitor driver are extracted (Example:- **C:\CDImageV61**), double click on the **launchpad.exe** to launch the Common Launchpad program

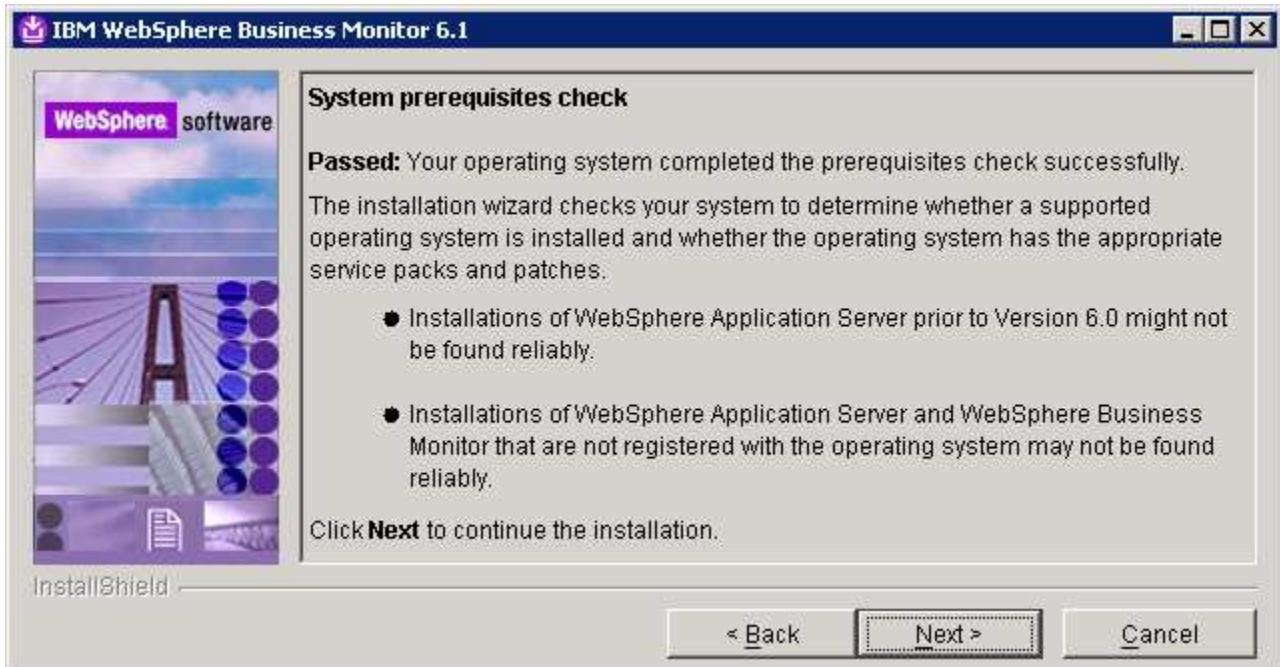


2. On the welcome screen, click on the **WebSphere Business Monitor Installation** link in the left pane and then click the '**Launch the installation wizard for WebSphere Business Monitor**' to the right. This launches the WebSphere Business Monitor V6.1 InstallShield wizard

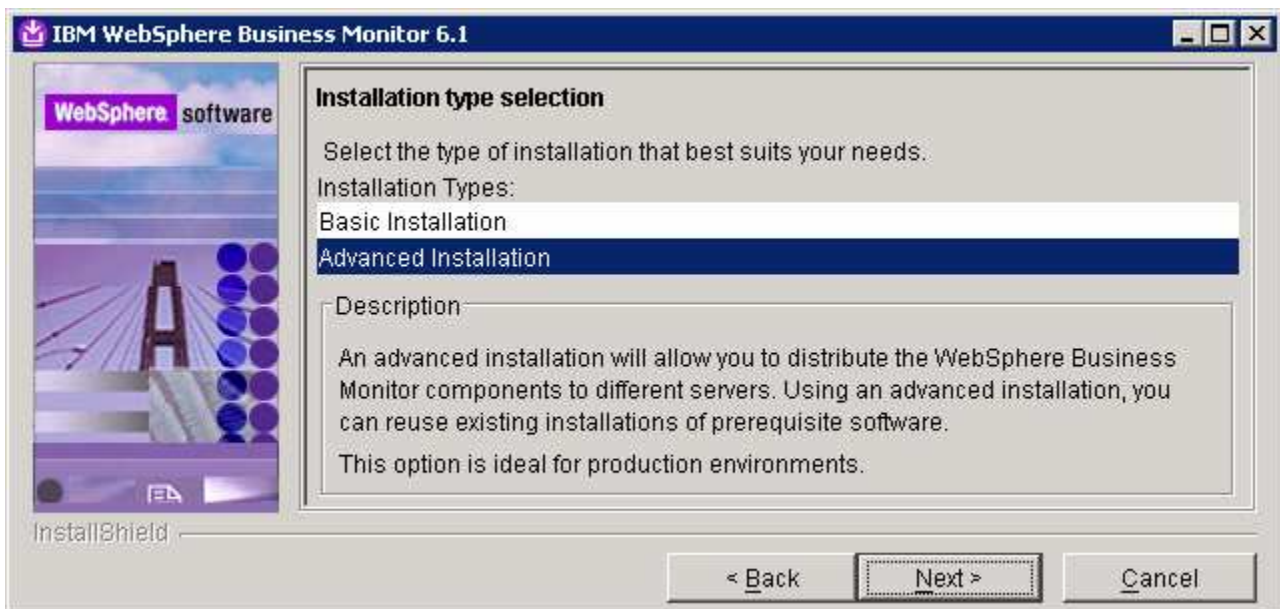


IBM WEBSHERE BUSINESS MONITOR 6.1 – LAB EXERCISE

- ___ 3. Click **Next**
- ___ 4. In the following panel, read the license agreement. If you agree to the terms, select the radio button for **'I accept the both the IBM and the non-IBM terms'**
- ___ 5. Click **Next**. The monitor installation program does an operating system prerequisite check and warns if the product installation is not supported.
- ___ 6. In the following panel, read the **'System prerequisite check'** information and act accordingly

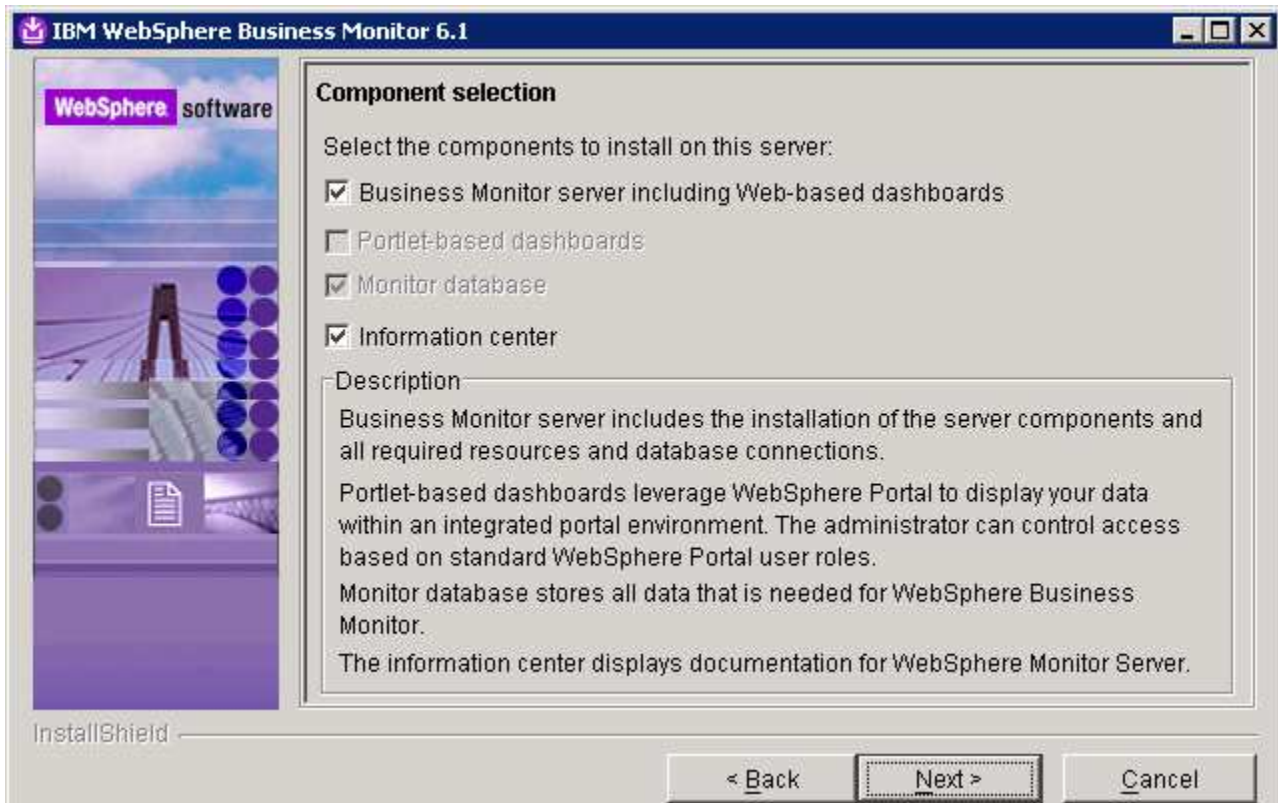


- ___ 7. Click **Next** to continue the installation
- ___ 8. In the following panel, select **Advanced Installation** as the **Installation Type**



IBM WEBSHERE BUSINESS MONITOR 6.1 – LAB EXERCISE

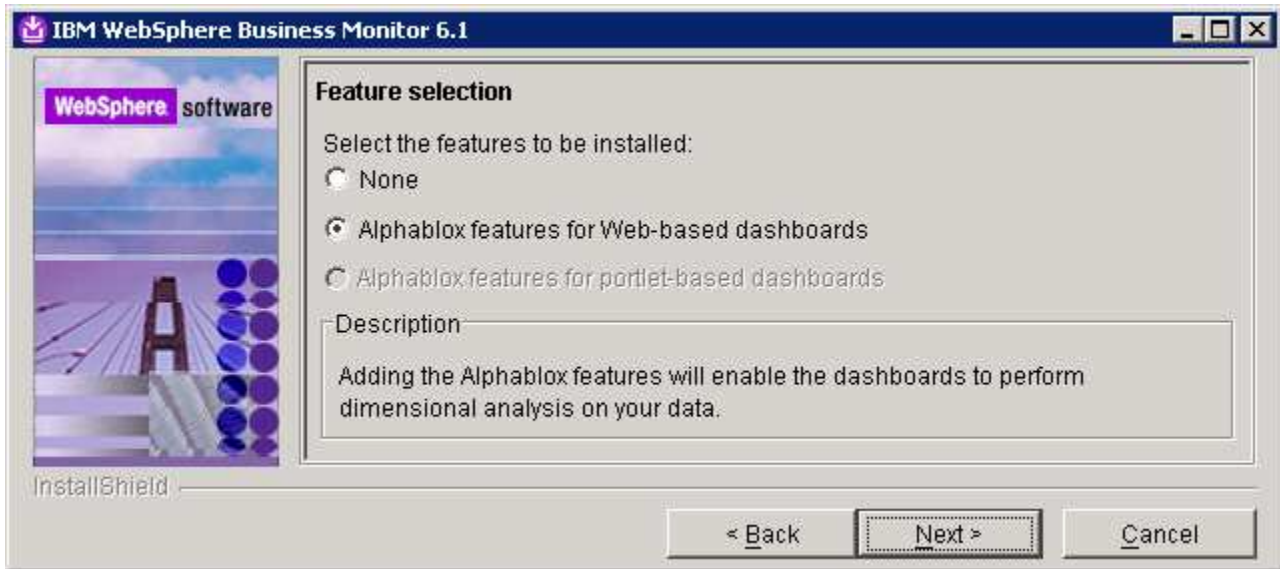
- ___ 9. Click **Next**
- ___ 10. In the following '**Component selection**' panel, ensure the check box for '**Business Monitor server including Web-based dashboards**' is selected. The check box for '**Monitor database**' is selected by default and dimmed, indicating that the monitor database creation is mandatory when the option to install the monitor server including Web-based dashboards is selected. Optionally select the check box for **Information Center** to install the information center



Note: The component selection for Portlet-based dashboards is enabled only if the Portal Server installation is available on this machine and is detected by the InstallShield wizard.

- ___ 11. Click **Next**
- ___ 12. In the following '**Feature selection**' panel, optionally select the radio button for '**Alphablox features for Web-based Dashboards**'. Select **None** if you do not want to install the Alphablox features

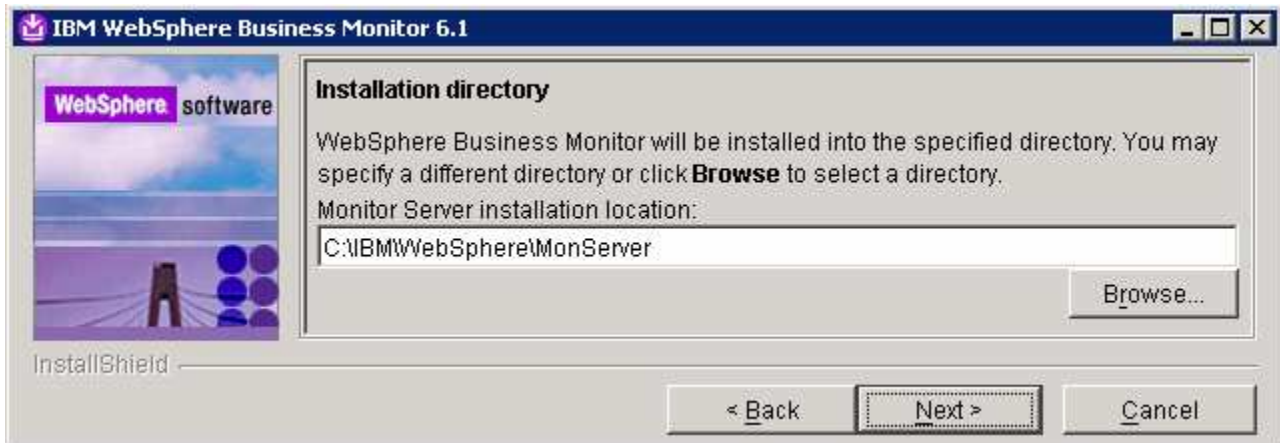
IBM WEBSHERE BUSINESS MONITOR 6.1 – LAB EXERCISE



___ 13. Click **Next**

___ 14. In the following panel, click the **Browse** button to specify a different directory for '**Monitor Server installation location**'

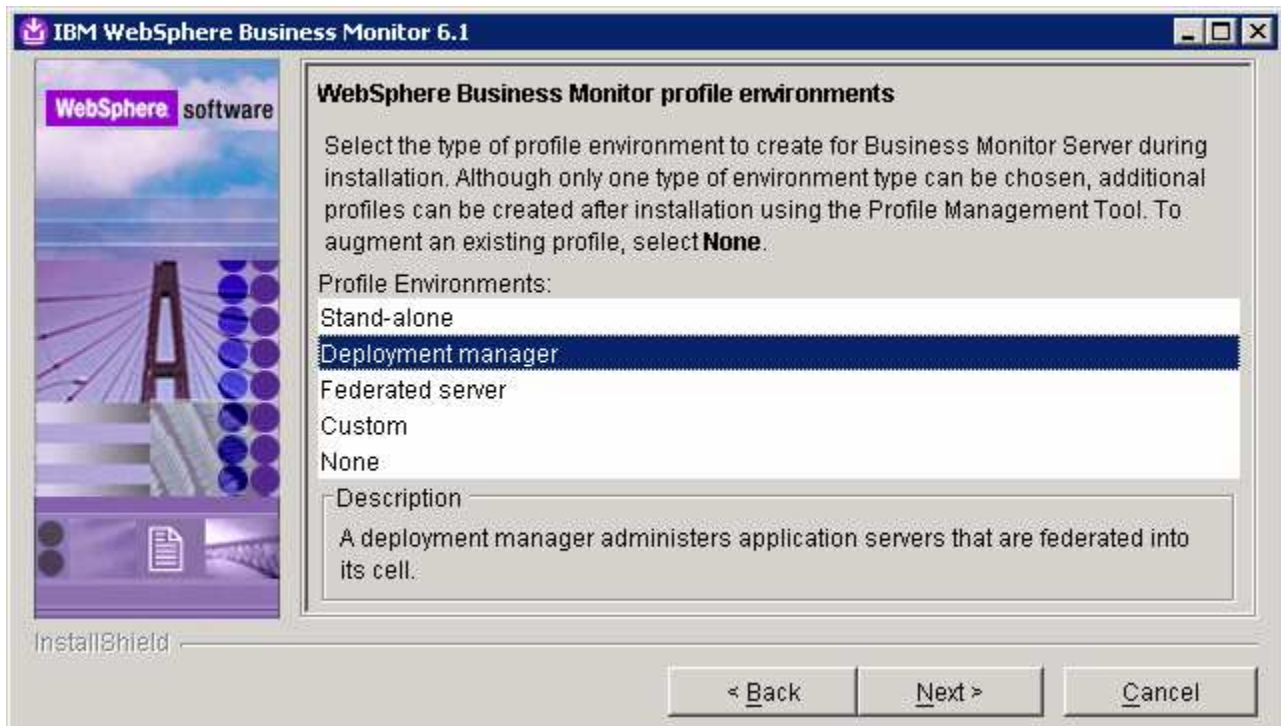
___ a. Monitor Server installation location : **C:\IBM\WebSphere\MonServer**



___ 15. Click **Next**

___ 16. In the following '**WebSphere Business Monitor profile Environments**' panel, select **Deployment manager** from the '**Profile Environments**'

IBM WEBSHERE BUSINESS MONITOR 6.1 – LAB EXERCISE

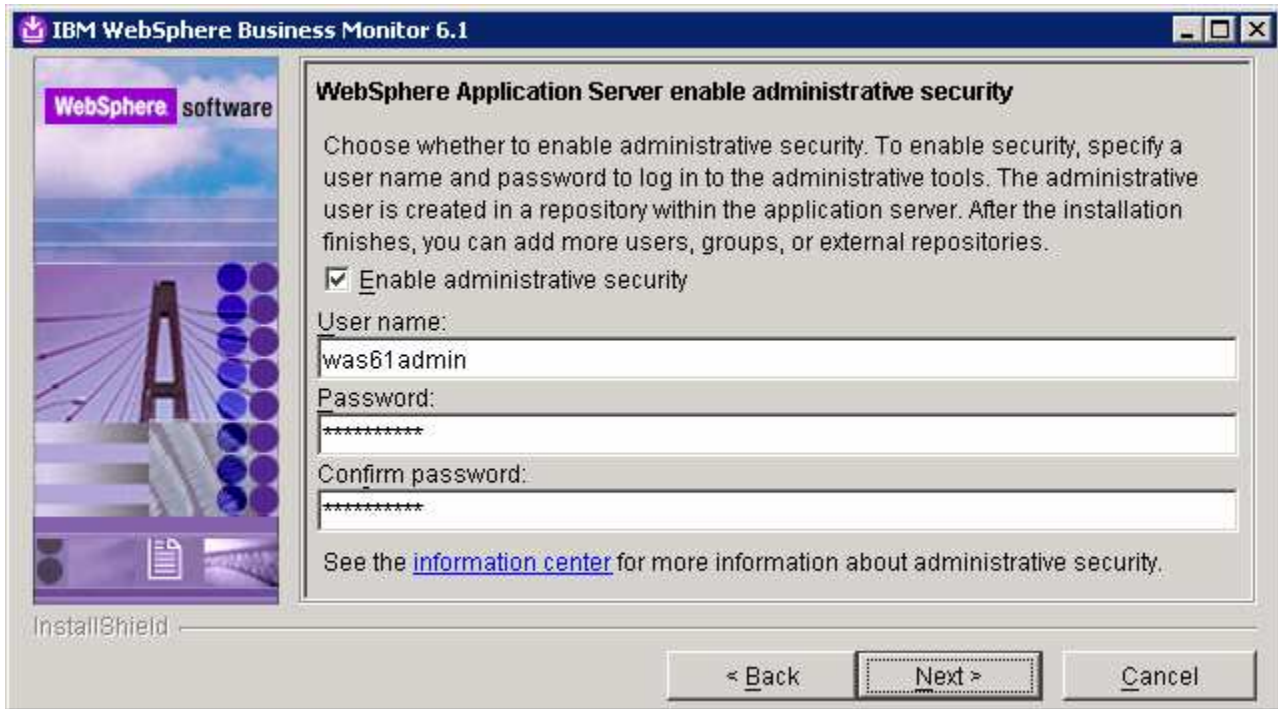


___ 17. Click **Next**

___ 18. In the following panel, you are given an option to enable the default WebSphere Application Server administrative security. Follow the instructions below to enable the security:

- ___ a. Select the check box next to '**Enable administrative security**'
- ___ b. User name : **was61admin**
- ___ c. Password : **was61admin**
- ___ d. Confirm Password : **was61admin**

IBM WEBSHERE BUSINESS MONITOR 6.1 – LAB EXERCISE



___ 19. Click **Next**

___ 20. In the following '**Database configuration**' panel, complete the following instructions:

- ___ a. Database Product : **DB2 Universal Database** (select from the drop down list)
- ___ b. Database creation method : Select the radio button next to '**Use existing database**'
- ___ c. Database name : **MONITOR**
- ___ d. Schema name : **MONITOR**

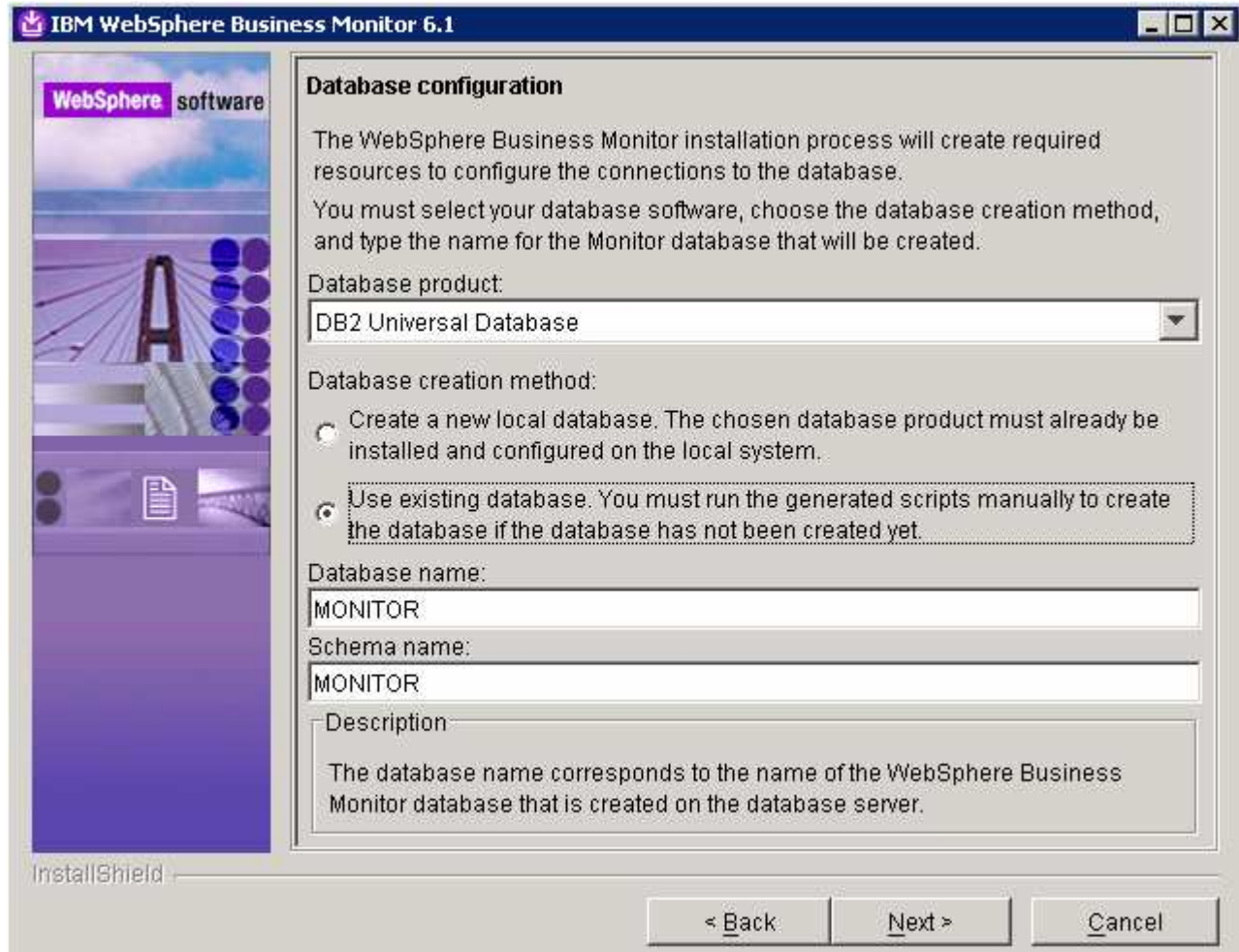
Note: -

Database Product: - The Monitor V6.1 Advanced installation wizard supports **DB2 Universal Database, DB2 UDB for z/OS V8** and **Oracle 10g** as database products in a monitor deployment manager environment.



Database creation method: - On choosing the '**Use existing database**' option, the InstallShield wizard creates the required resources and configures the connections for the existing or non-existing MONITOR database. If the MONITOR database is not yet created, you must manually run the database scripts to create the database.

IBM WEBSHERE BUSINESS MONITOR 6.1 – LAB EXERCISE



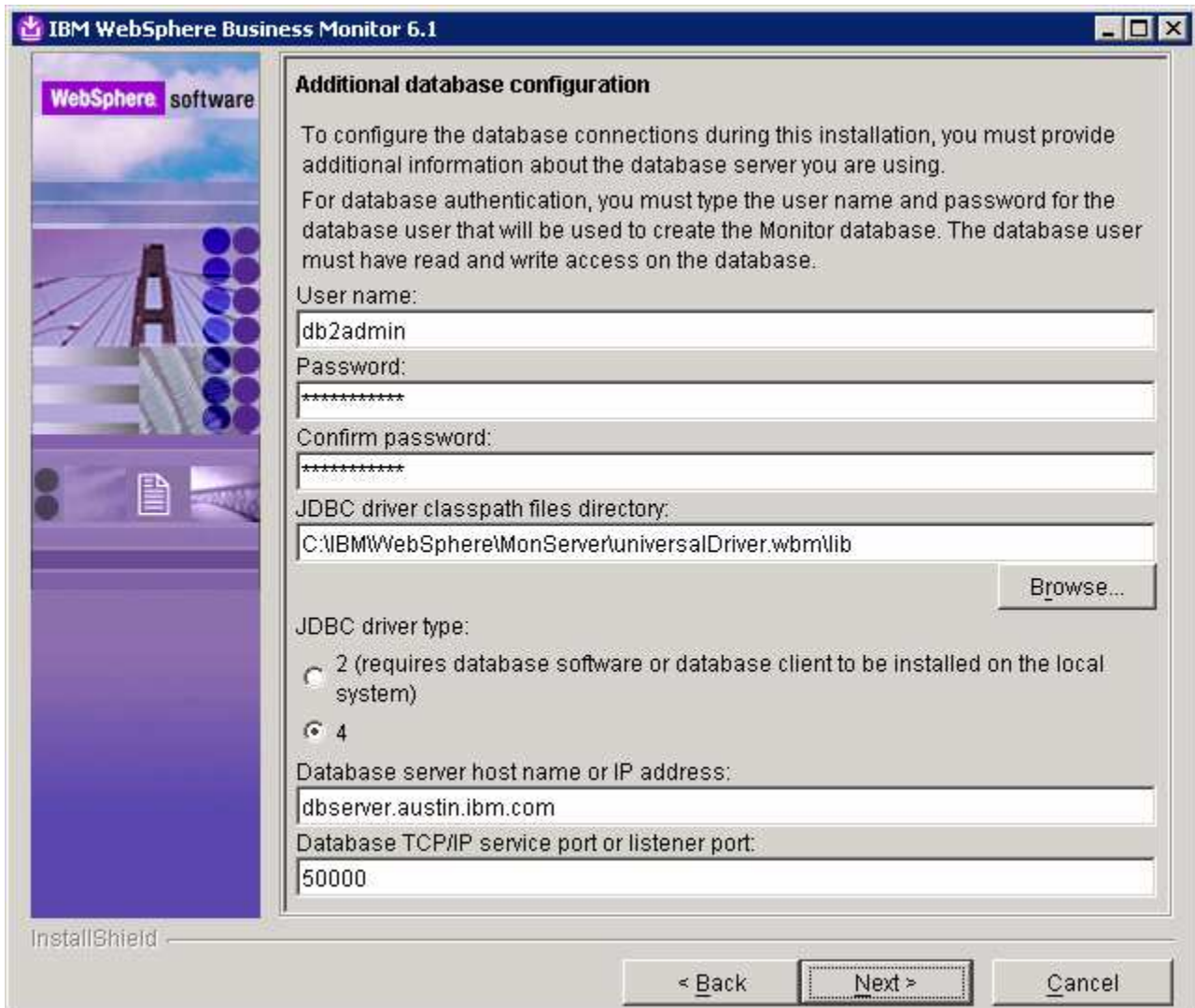
Note: The InstallShield wizard uses the information provided in this panel to verify the database connection, and verify that the database is installed and running. If the MONITOR database does not exist at this time, click **OK** on the warning dialog and continue with the installation. You can use the database scripts that are generated and manually create the database once the installation is complete.

- ____ 21. Click **Next**
- ____ 22. In the following '**Additional database configuration**' panel, enter the following information :
- __ a. User name : **db2admin**
 - __ b. Password : **db2admin**
 - __ c. Confirm Password : **db2admin**
 - __ d. JDBC driver class path files directory
: **C:\IBM\WebSphere\MonServer\universalDriver.wbm\lib**
 - __ e. JDBC driver type : **4**
 - __ f. Database server host name : **<fully qualified host name of the database server machine>**

IBM WEBSHERE BUSINESS MONITOR 6.1 – LAB EXERCISE

Example: **dbserver.austin.ibm.com**

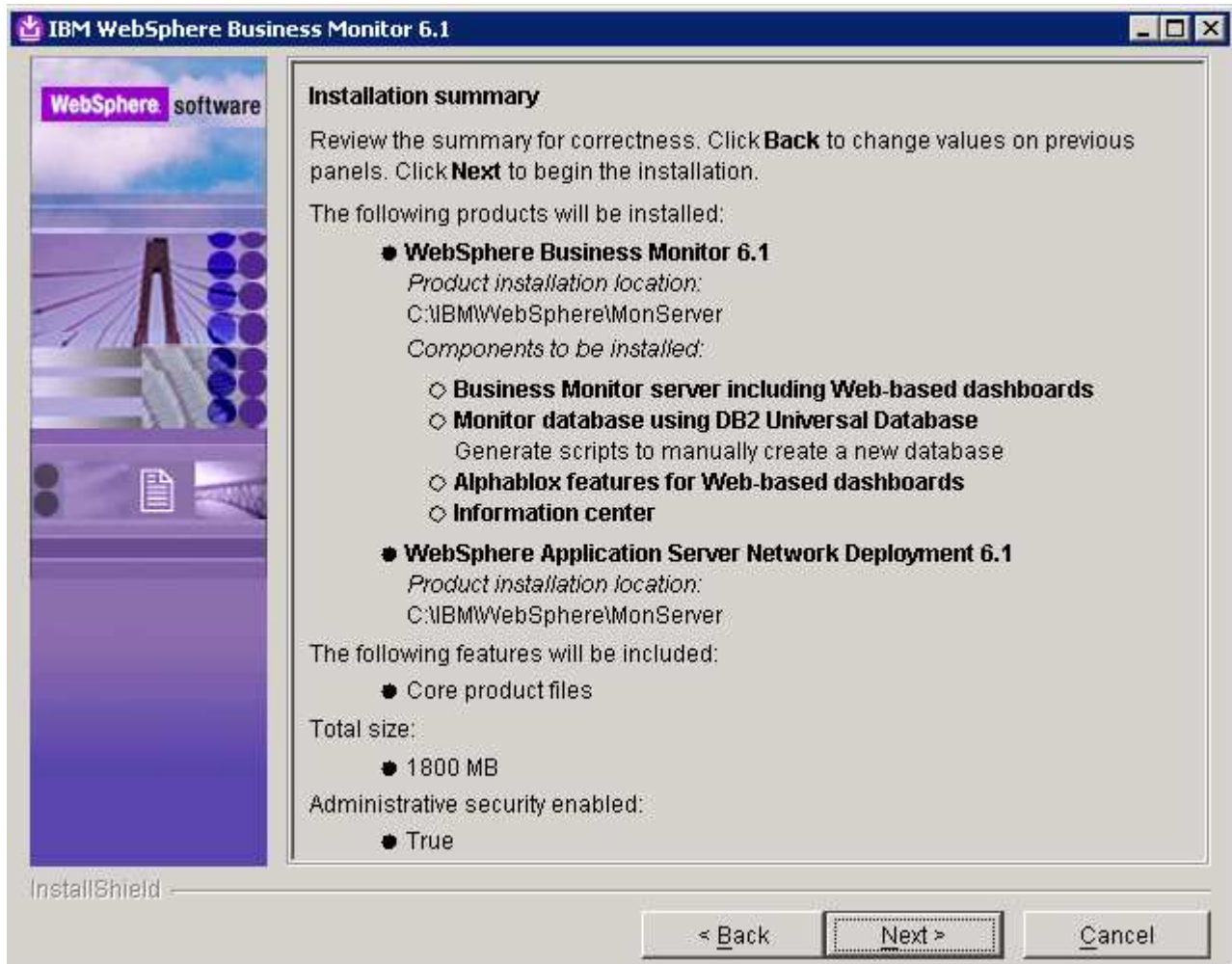
__ g. Server port : **50000**



___ 23. Click **Next**

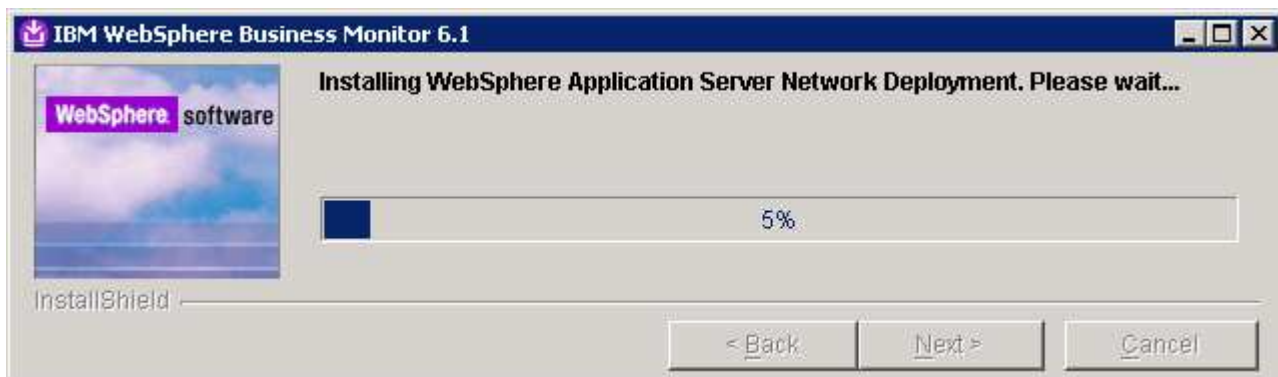
___ 24. Review the installation summary in the following panel

IBM WEBSHERE BUSINESS MONITOR 6.1 – LAB EXERCISE



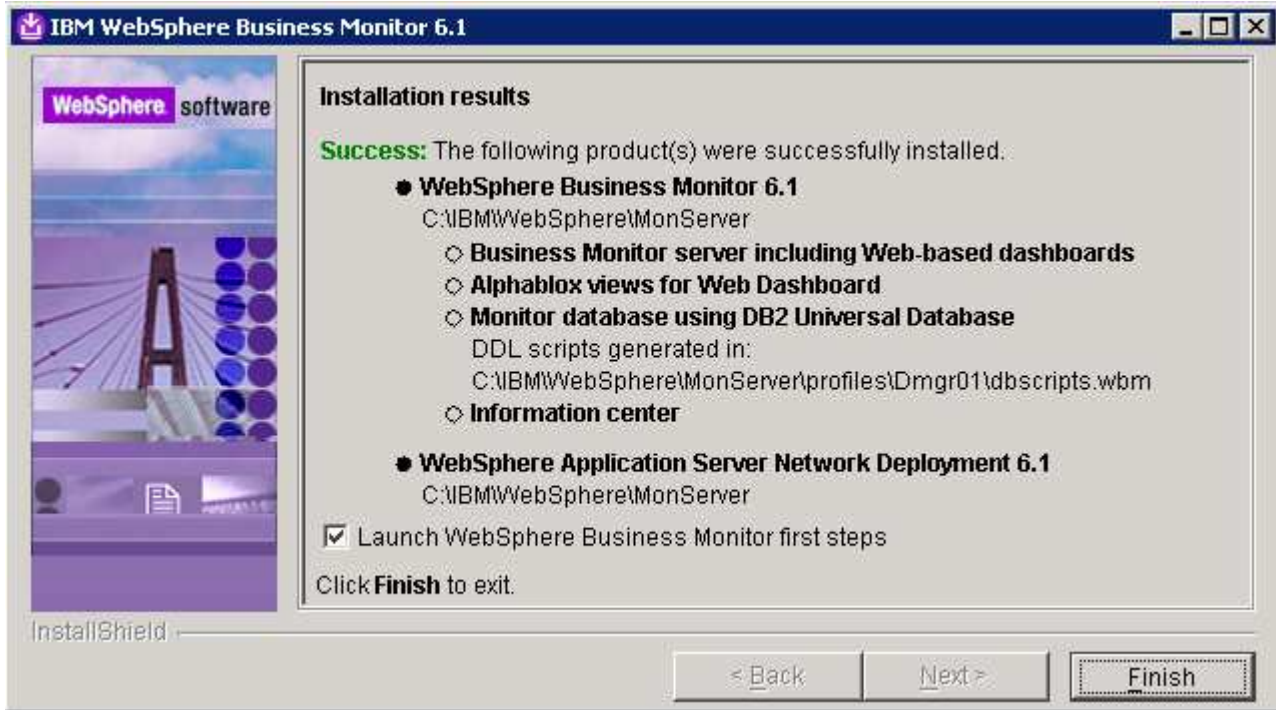
___ 25. Click **Next**. This action starts the installation

___ 26. The installation progresses starting with the WebSphere Application Server V6.1

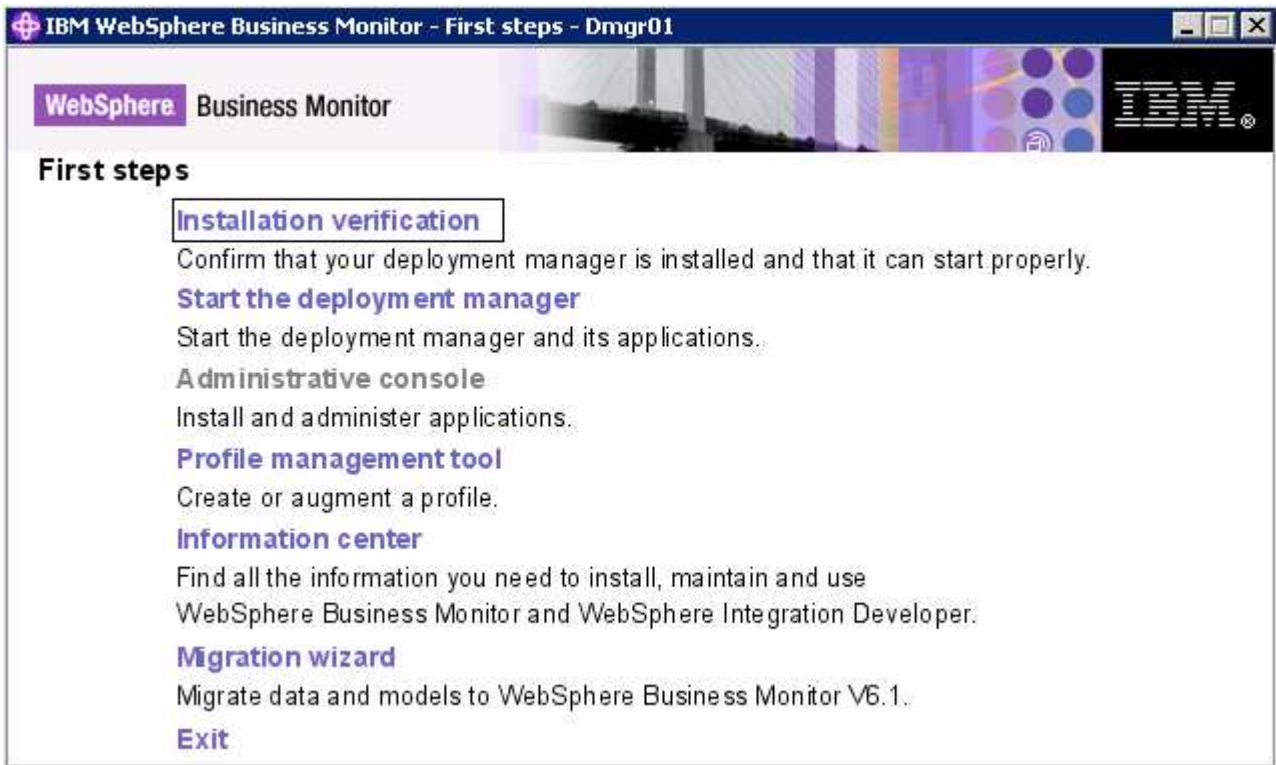


___ 27. Review the **Installation results** summary of the WebSphere Business Monitor V6.1 components and ensure all the components listed are successfully installed. Optionally select the check box for '**Launch WebSphere Business Monitor first steps**' to launch the first steps console to run an installation verification test

IBM WEBSHERE BUSINESS MONITOR 6.1 – LAB EXERCISE



___ 28. Click **Finish** to exit the installation wizard. The 'First Steps' console is launched as shown below:



___ 29. Click the '**Installation Verification**' link to confirm that the monitor server and its components are installed successfully. The '**Installation verification**' console is launched

IBM WEBSHERE BUSINESS MONITOR 6.1 – LAB EXERCISE



- ____ 30. Ensure all the components are flagged as **'passed'** and close the **'Installation verification'** console
- ____ 31. Click the **'Exit'** link to close the **'First Steps'** console

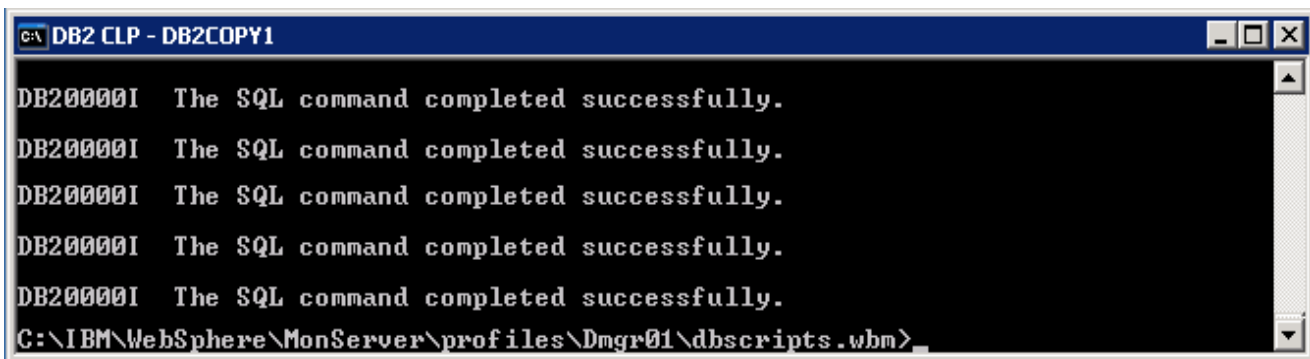
Manually create the MONITOR database

Note: Even though this is a three machine scenario in which the Monitor Deployment Manager and the DB2 server are installed on the same machine, you can scale out the DB2 server to a fourth machine. The instructions are written with the DB2 server as remote to the Monitor Deployment Manager profile.

- ____ 1. If the DB2 server is remote to the Monitor Deployment Manager machine, copy the MONITOR database scripts to the DB2 machine. The scripts are located at **<DMGR_PROFILE_HOME>\dbscripts.wbm**. The only database script you are interested in to create the database and schema is `createDatabaseDb2.ddl`

Note: Alternatively you can edit the `createDatabaseDb2.ddl` script and follow the instructions on how to create the MONITOR database manually.

- ____ 2. Open the DB2 command window from **Start → Programs → IBM DB2 → Command Line Tools → Command Window** and change the directory to **<DMGR_PROFILE_HOME>\dbscripts.wbm**
- ____ 3. Run the `createDatabaseDb2.ddl` script using the following command:
 - `db2 -tf createDatabaseDb2.ddl`



```

C:\IBM\WebSphere\MonServer\profiles\Dmgr01\dbscripts.wbm>
DB20000I The SQL command completed successfully.
DB20000I The SQL command completed successfully.
DB20000I The SQL command completed successfully.
DB20000I The SQL command completed successfully.
DB20000I The SQL command completed successfully.
C:\IBM\WebSphere\MonServer\profiles\Dmgr01\dbscripts.wbm>
  
```

- ____ 4. Close the DB2 command line window
- ____ 5. Now restart the Monitor Deployment Manager profile. To restart the Deployment Manager profile, open a command window and change the directory to **<DMGR_PROFILE_HOME>\bin** and run the following command if the WebSphere default security is enabled. You need not use the username and password parameters if the security is not enabled
 - `stopManager.bat -username was61admin -password was61admin`
 - `stopManager.bat` (if the WebSphere default security is not enabled)
 - `startManager.bat`
- ____ 6. Close the command window
- ____ 7. Review the `SystemOut.log` file of the monitor deployment manager profile and ensure that there are no errors related to MONITOR database connection

Part 3: Preparing the Monitor federated server environment (Machine 2)

In this part of the lab, the prerequisite software is obtained and extracted in such a way that an on-disk WebSphere Business Monitor V6.1 installation image is created.

Obtain the pre-requisite software and extract in such a way to create the correct on-disk structure for the Launchpad to run

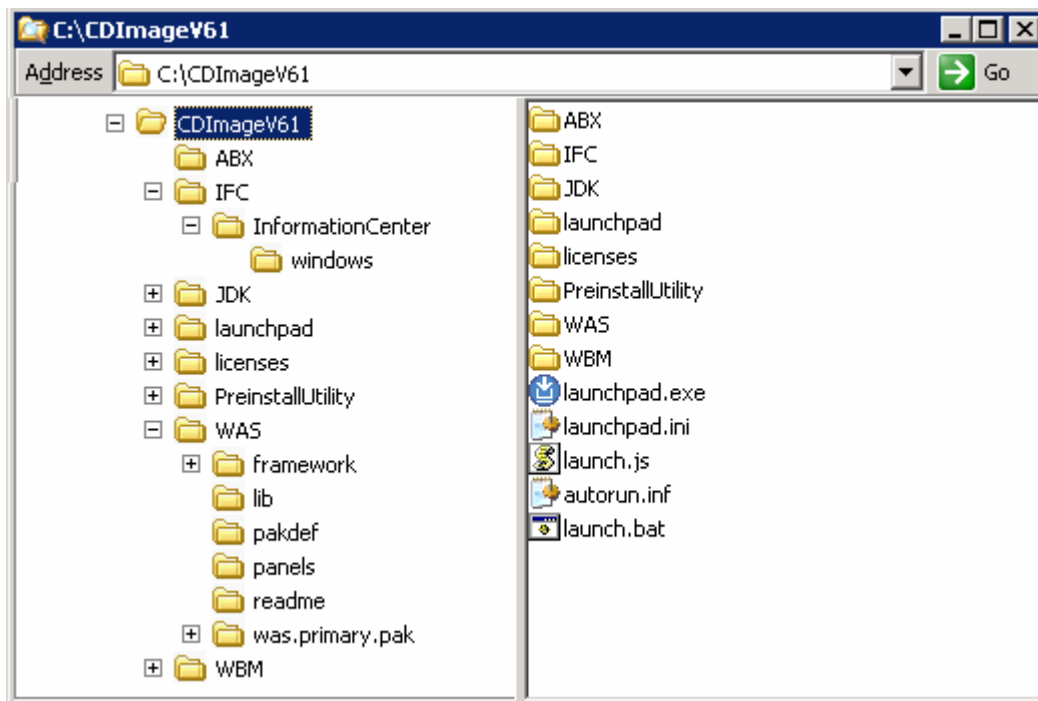
___ 1. The following are the installation archives needed to install the WebSphere Business Monitor V6.1

Product Name	File Name
WebSphere Business Monitor V6.1 Base Components for Windows 2003 (Monitor V61 Setup CD)	C186LEN.zip
WebSphere Application Server Network Deployment V6.1.0.13 for Windows	C187CML.zip
Alphablox V9.5 for Windows, AIX	C187GML.tar.gz
Information Center for Windows	IBM_Help_Win32.zip

___ 3. Download all the installation .zip files to a directory for example : C:\MonitorDriversV61\

___ a. Extract all the archives into a directory named for example, **C:\CDImageV61** to create an on-disk image and confirm that the directory structure was extracted correctly. It should appear similar to the picture shown below:

Note: Do not extract the **IBM_Help_Win32.zip** file. The Monitor installer expects a .zip file at <Monitor_Install_Image_Directory>\IFC\InformationCenter\windows location.



IBM WEBSHERE BUSINESS MONITOR 6.1 – LAB EXERCISE

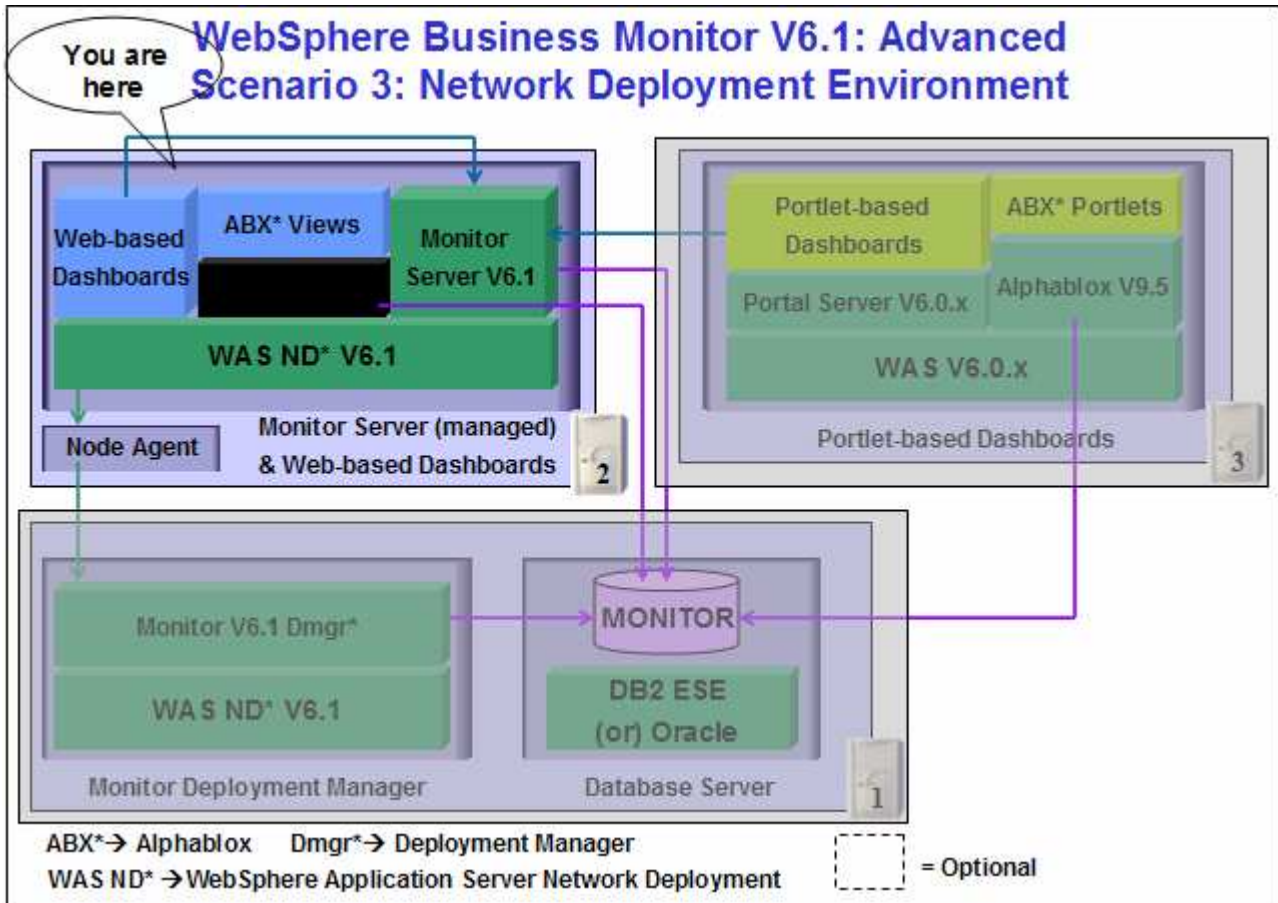
Note: Pre-requisite image location and folder name:

Executables should be placed directly under the directories specified above, so that 'install.exe' or 'install.sh' can be silently launched. Adding 'subdirectories' will prevent successful completion. Do not extract the IBM_Help_Win32.zip file.

InfoCenter - <Monitor_Install_Image_Directory>\IFC\InformationCenter\windows\IBM_Help_Win32.zip
WebSphere Application Server V6.1 - <Monitor_Install_Image_Directory>\WAS\
Alphablox V9.5 - <Monitor_Install_Image_Directory>\ABX\install.exe.

Part 4: Installing Monitor Server in a Federated Environment (Machine 2)

In this part of the lab, you will choose the option to install the Monitor server with Web-based dashboards including Alphablox views in a federated server environment using the InstallShield wizard on machine two.



In this part of the lab on machine two, the InstallShield wizard installs the WebSphere Application Server V6.1.0.13, silently uses the customized Profile Management Tool to create and augment the WebSphere Business Monitor profile, federates it with an existing monitor deployment manager profile, and installs Monitor Server and its components.

In this scenario you chose the **'Use existing database'** option to create the required resources and configure connections to the existing MONITOR database on the monitor deployment manager machine. The MONITOR database has already been created and you will use a Type 4 connection to connect to it.

Important: The monitor InstallShield wizard does not create an instance of Alphablox V9.5 in a Monitor deployment manger and federated server environment. You might want to create a Monitor server cluster (WebSphere Application Server cluster) and then install Alphablox V9.5 in a clustered environment. Visit the Alphablox information center for more information.

IBM WEBSHERE BUSINESS MONITOR 6.1 – LAB EXERCISE

Prerequisites: - Before proceeding further, ensure the following prerequisites are met:

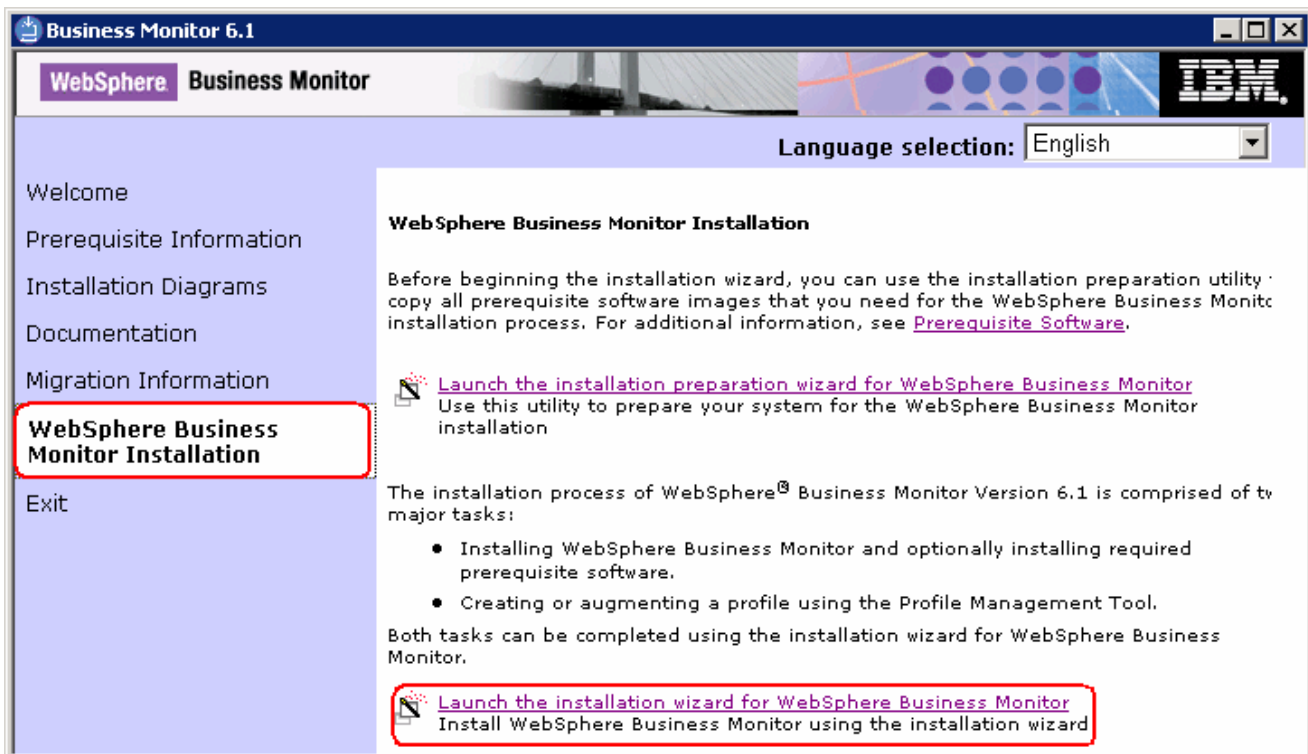
- Ensure that the monitor deployment manager profile is running

Note: To start the Monitor Deployment Manager profile on machine 1, open a command window, change the directory to <DMGR_HOME>\bin and run the **startManager.bat** script.

- Ensure the clocks are in sync between the monitor deployment manager machine and the Monitor federated server machine (Machine 1 and Machine 2)

Follow the instructions below to complete the WebSphere Business Monitor V6.1 Advanced installation:

1. From the directory where all the pre-requisites and the Monitor driver are extracted (Example:- C:\CDImageV61\), double click on the **launchpad.exe** to run the Common Launchpad program



2. From the welcome screen, click on the **WebSphere Business Monitor Installation** link in the left pane and then click the '**Launch the installation wizard for WebSphere Business Monitor**' to the right. This launches the WebSphere Business Monitor V6.1 InstallShield wizard

IBM WEBSHERE BUSINESS MONITOR 6.1 – LAB EXERCISE

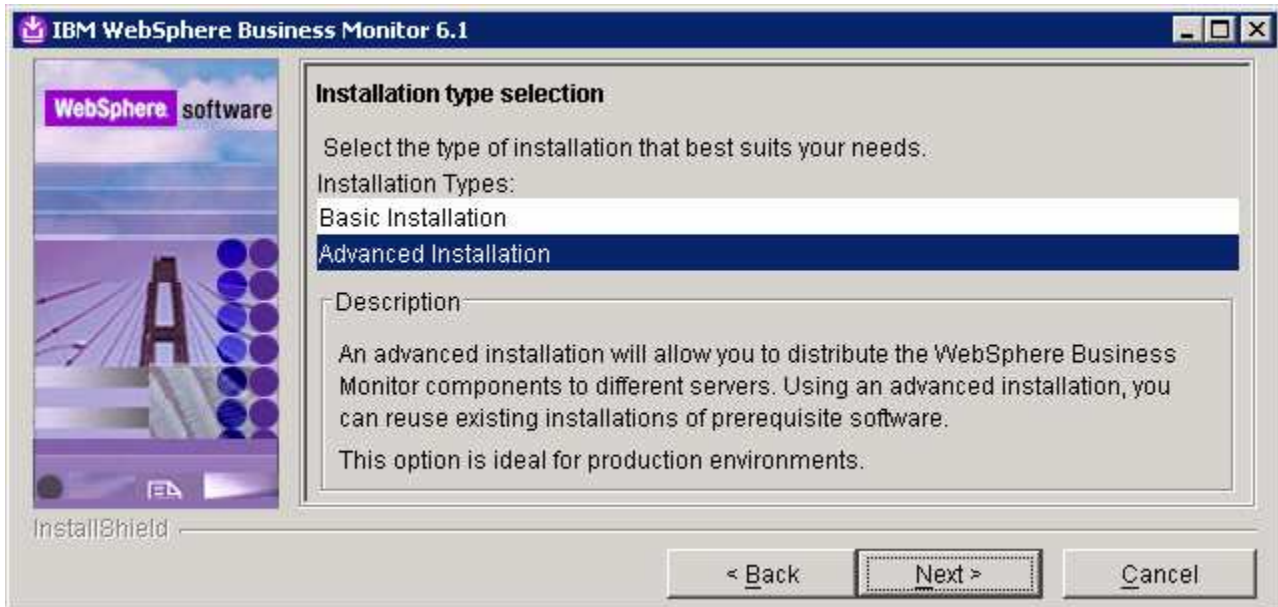


- ___ 3. Click **Next**
- ___ 4. In the following panel, read the license agreement. If you agree to the terms, select the radio button for '**I accept the both the IBM and the non-IBM terms**'
- ___ 5. Click **Next**. The monitor installation program does an operating system prerequisite check and warns if the product installation is not supported.
- ___ 6. In the following panel, read the '**System prerequisite check**' information

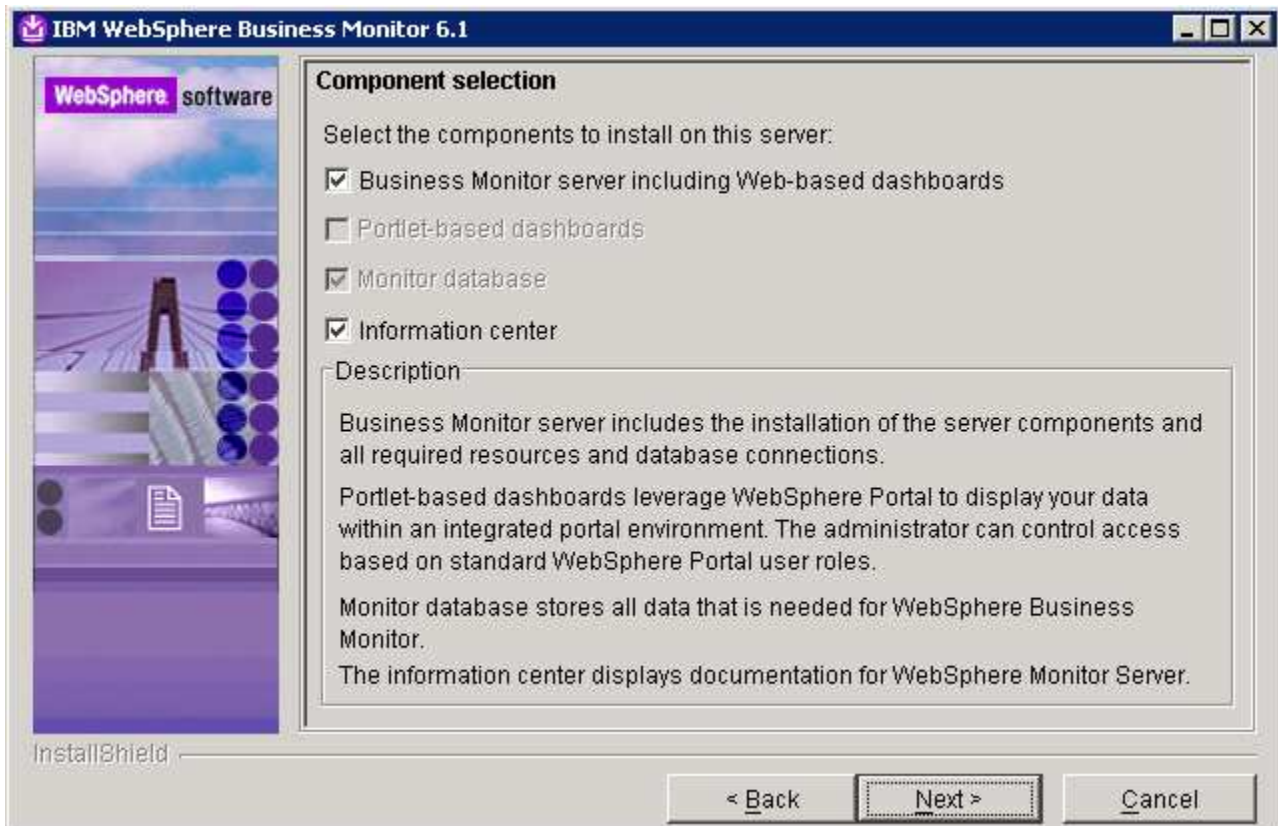


- ___ 7. Click **Next** to continue the installation
- ___ 8. In the following panel, select **Advanced Installation** as the **Installation Type**

IBM WEBSHERE BUSINESS MONITOR 6.1 – LAB EXERCISE



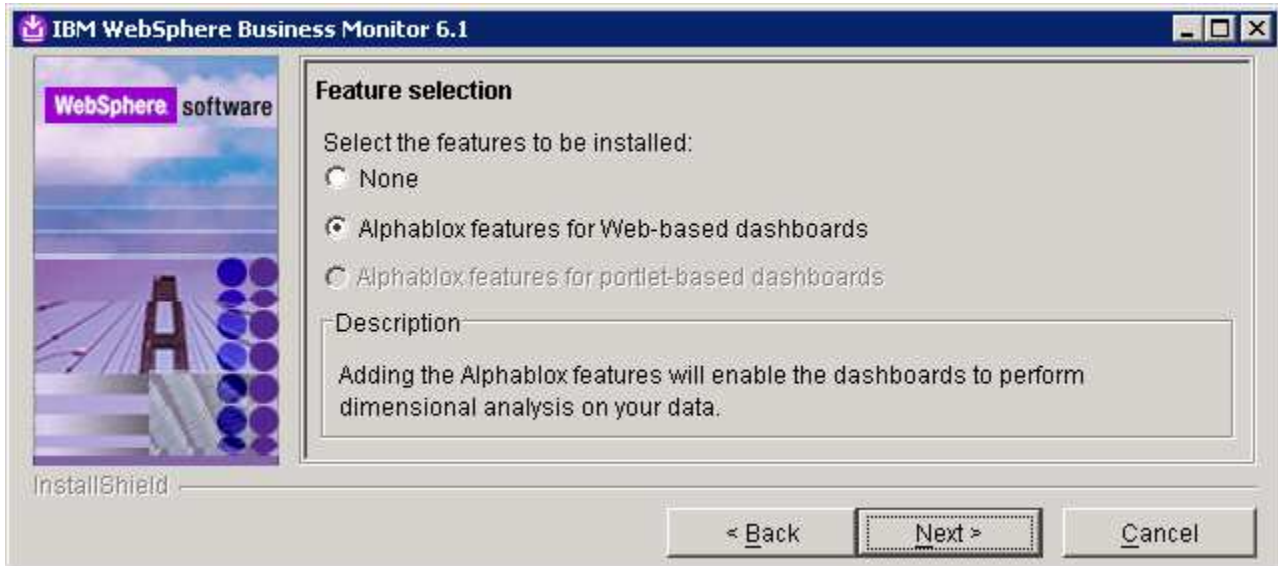
- ___ 9. Click **Next**
- ___ 10. In the following '**Component selection**' panel, ensure the check box for '**Business Monitor server including Web-based Dashboard**' is selected. The check box for '**Monitor database**' is selected by default and dimmed, indicating that the monitor database creation is mandatory when the option to install the monitor server including Web-based dashboards is selected. Optionally select the check box for **Information Center** to install the information center



Note: The component selection for Portlet-based dashboards is enabled only if the Portal Server is available on this machine and is detected by the InstallShield wizard.

___ 11. Click **Next**

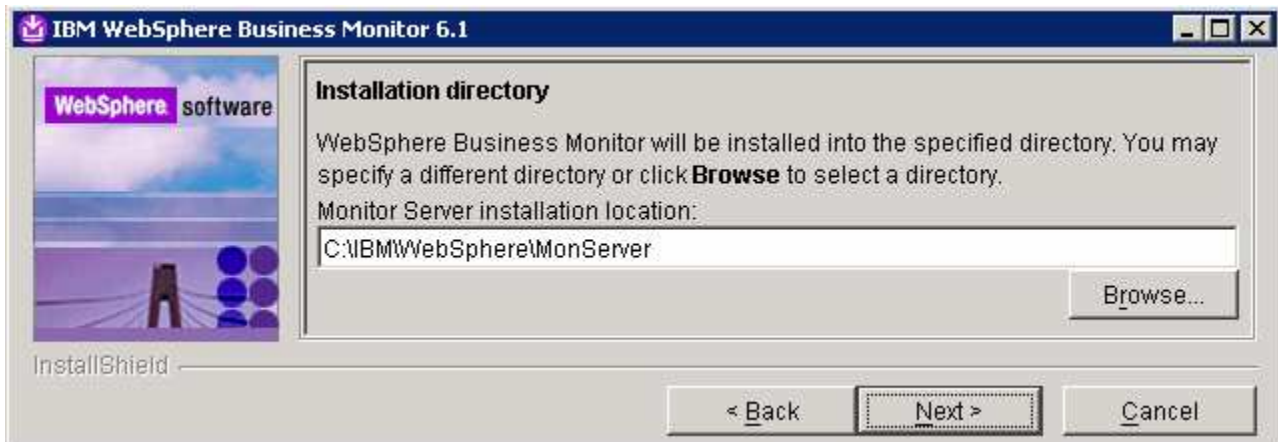
___ 12. In the following **'Feature selection'** panel, optionally select the radio button for **'Alphablox features for Web-based Dashboards'**. Select **None** if you do not want to install the Alphablox features



___ 13. Click **Next**

___ 14. In the following panel, click the **Browse** button to specify a different directory for **'Monitor Server installation location'**

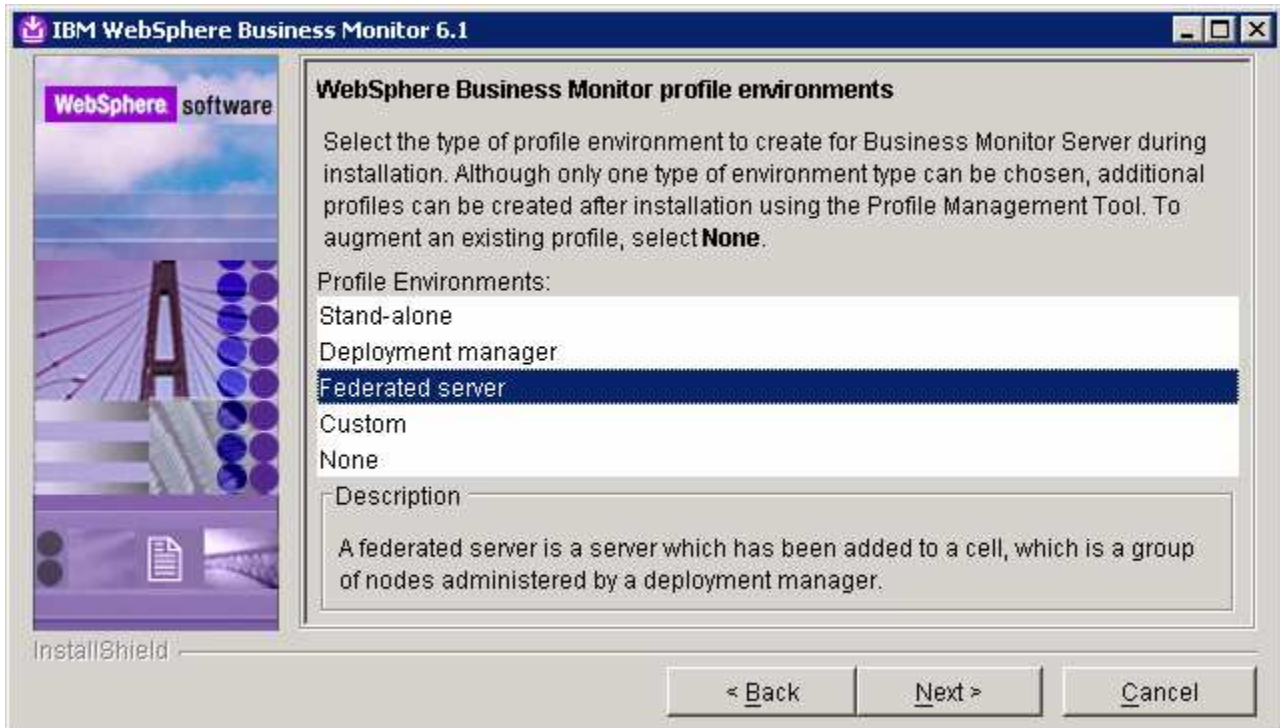
___ a. Monitor Server installation location : **C:\IBM\WebSphere\MonServer**



___ 15. Click **Next**

___ 16. In the following **'WebSphere Business Monitor profile Environments'** panel, select **Federated server** from the **'Profile Environments'**

IBM WEBSHERE BUSINESS MONITOR 6.1 – LAB EXERCISE



___ 17. Click **Next**

___ 18. In the following panel, enter the following '**Federation**' information:

___ a. Deployment manager host name : **<fully qualified host name of the deployment manager machine>**

Example: **mondmgr.austin.ibm.com**

___ b. Deployment manager SOAP port number : **8879**

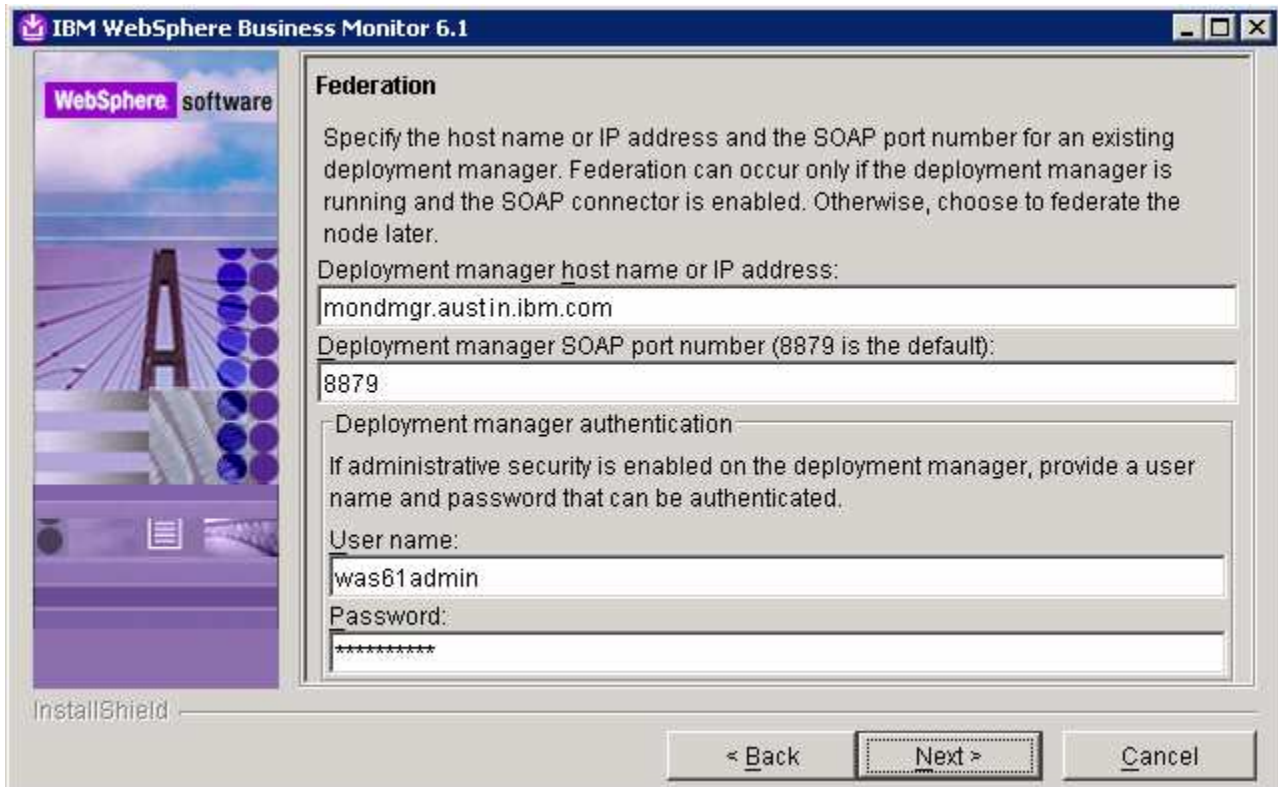
___ c. Deployment manager authentication :

: User name: **was61admin**

: Password: **was61admin**

Note: To locate the correct '**Deployment manager SOAP port number**', log on to the administrative console of the monitor deployment manager. On the left navigation pane of the administrative console, expand **System administration** → **Deployment manager** and expand **Ports** under the 'Additional Properties' section. (SOAP_CONNECTOR_ADDRESS: 8879 is the default port number if the deployment manager is the only profile existing on this machine)

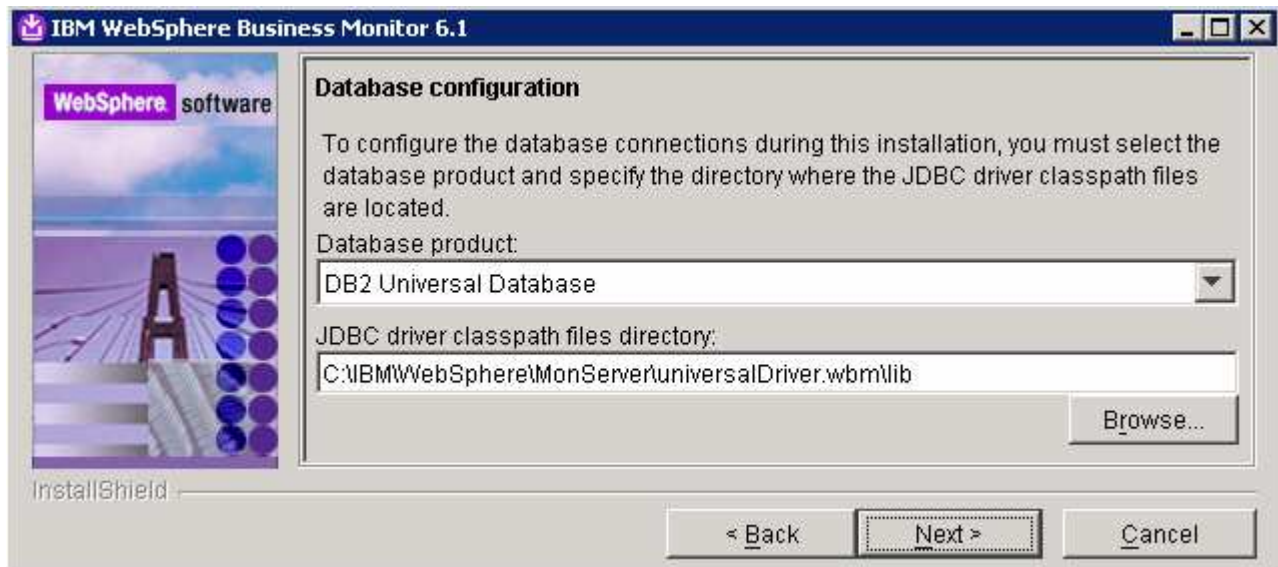
IBM WEBSHERE BUSINESS MONITOR 6.1 – LAB EXERCISE



___ 19. Click **Next**

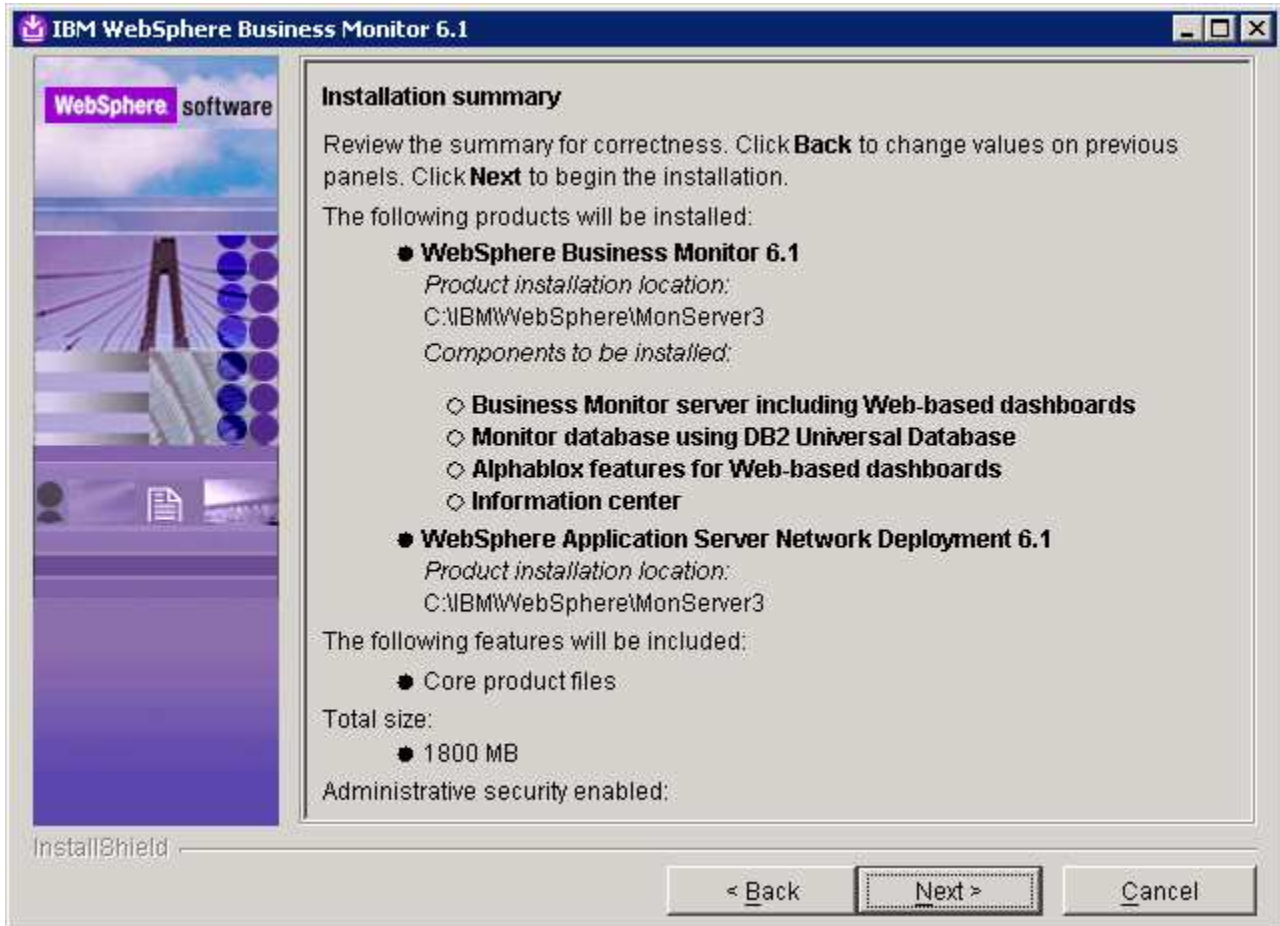
___ 20. In the following '**Database configuration**' panel, enter the following:

- ___ a. Database Product : **DB2 Universal Database** (select from the drop down list)
- ___ b. JDBC driver class path files directory :
C:\IBM\WebSphere\MonServer\universalDriver.wbm\lib

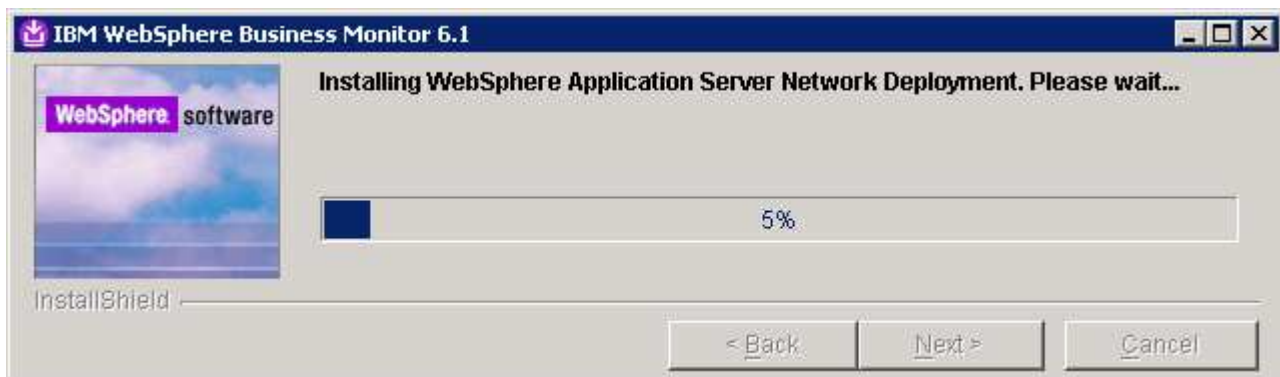


IBM WEBSHERE BUSINESS MONITOR 6.1 – LAB EXERCISE

- ___ 21. Click **Next**
- ___ 22. Review the installation summary in the following panel

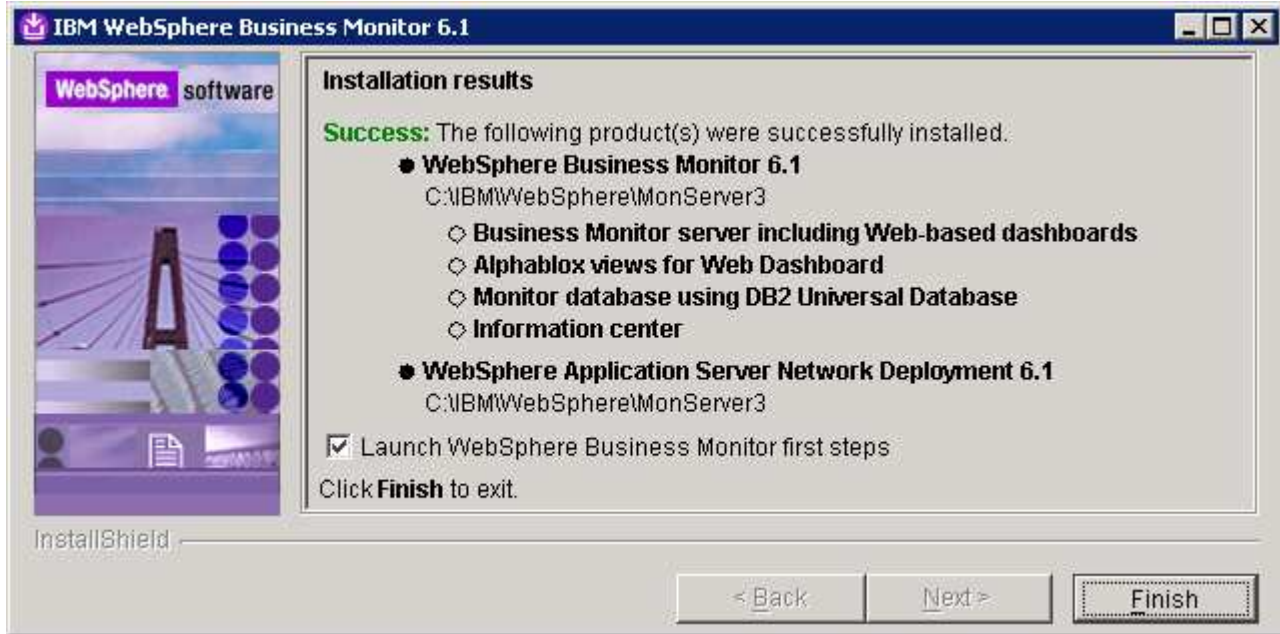


- ___ 23. Click **Next**. This action starts the installation
- ___ 24. The installation progresses starting with the WebSphere Application Server V6.1



- ___ 25. Review the **Installation results** summary of the WebSphere Business Monitor V6.1 components and ensure all the components listed are successfully installed. Optionally select the check box for 'Launch WebSphere Business Monitor first steps' to launch the first steps console

IBM WEBSHERE BUSINESS MONITOR 6.1 – LAB EXERCISE



___ 26. Click **Finish** to exit the installation wizard. The 'First Steps' console is launched as shown below:



___ 27. Click the '**Profile management tool**' link to if you want to launch the profile management tool and create another federated monitor profile

___ 28. Click the '**Exit**' link to close the '**First Steps**' console

___ 29. Now restart the node agent. Follow the instruction below:

___ a. Open an a command window and change directory to **<WBMONITOR_HOME>\bin**

___ b. Run the following stop and start commands:

- stopNode.bat –username was61admin –password was61admin (if security enabled)

IBM WEBSHERE BUSINESS MONITOR 6.1 – LAB EXERCISE

- stopNode.bat (if security not enabled)
- startNode.bat

____ 30. Now start the monitor server profile. Run the following command to start the monitor server profile:

- startServer.bat wbmServer

____ 31. Review the SystemOut.log and SystemErr.log files

Part 5: Preparing for Portlet-based dashboards installation (Machine 3)

In this part of the lab, the pre-requisite software is obtained and extracted in such a way that an on-disk WebSphere Business Monitor V6.1 installation image is created.

___ 1. The following are the installation files needed to install the WebSphere Business Monitor V6.1

Product Name	File Name
WebSphere Business Monitor V6.1 Base Components for Windows 2003 (Monitor V61 Setup CD)	C186LEN.zip
Alphablox V9.5 for Windows, AIX	C187GML.tar.gz
Information Center for Windows	IBM_Help_Win32.zip

___ 4. Download all the installation archives to a directory for example : C:\MonitorDriversV61\

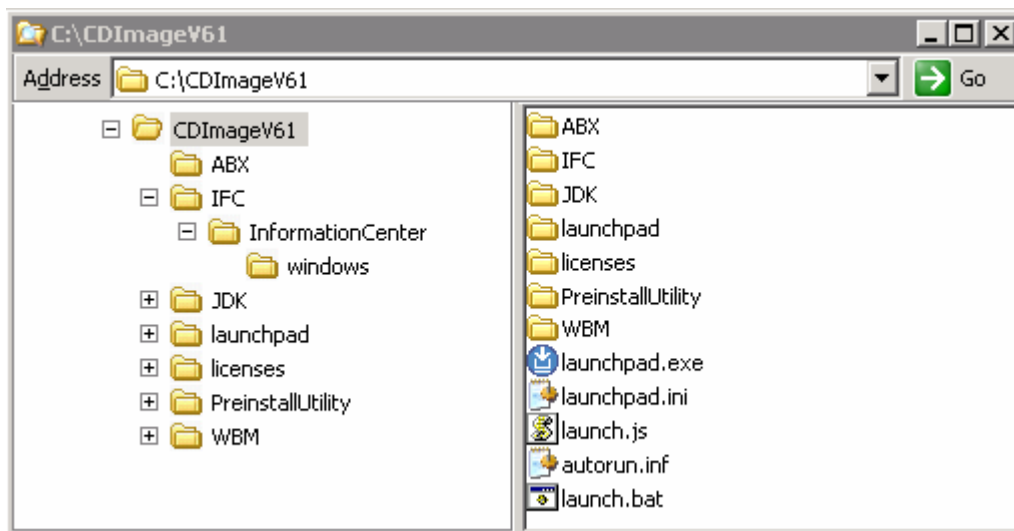
___ a. Extract all of the archives into a directory named for example, C:\CDImageV61\ to create an on-disk image and confirm that the directory structure was extracted correctly. It should appear similar to the picture shown below:

Note: Pre-requisite image location and folder name:

Executables should be placed directly under the directories specified below, so that 'install.exe' or 'install.sh' can be silently launched. Adding 'subdirectories' will prevent successful completion.

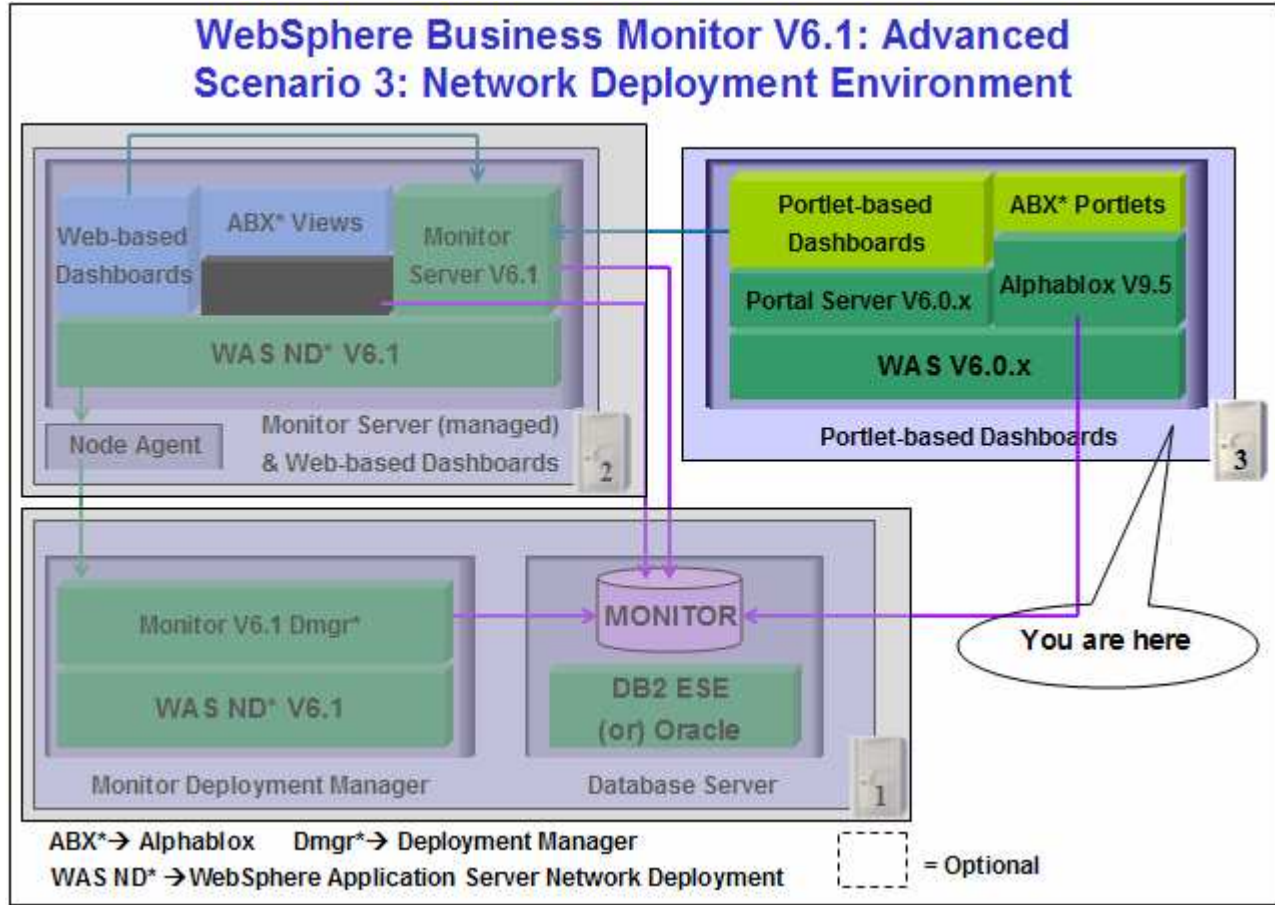
Do not extract IBM_Help_Win32.zip. The InstallShield wizard expects 'IBM_Help_Win32.zip' file name.

InfoCenter - <Monitor_Install_Image_Directory>\IFC\InformationCenter\windows\IBM_Help_Win32.zip
Alphablox V9.5- <Monitor_Install_Image_Directory>\ABX\install.exe



Part 6: Installing Portlet-based dashboards including Alphablox views (Machine 3)

In this part of the lab, you will choose the option to install only the Portlet-based dashboards including Alphablox views using the InstallShield wizard on machine three.



In this part of the lab on machine two, you will install WebSphere Portal Server V6.0.1.1 as a prerequisite and then use InstallShield wizard to install the Portlet-based dashboards, Alphablox V9.5 instance for Alphablox views and configure resources for the MONITOR database.

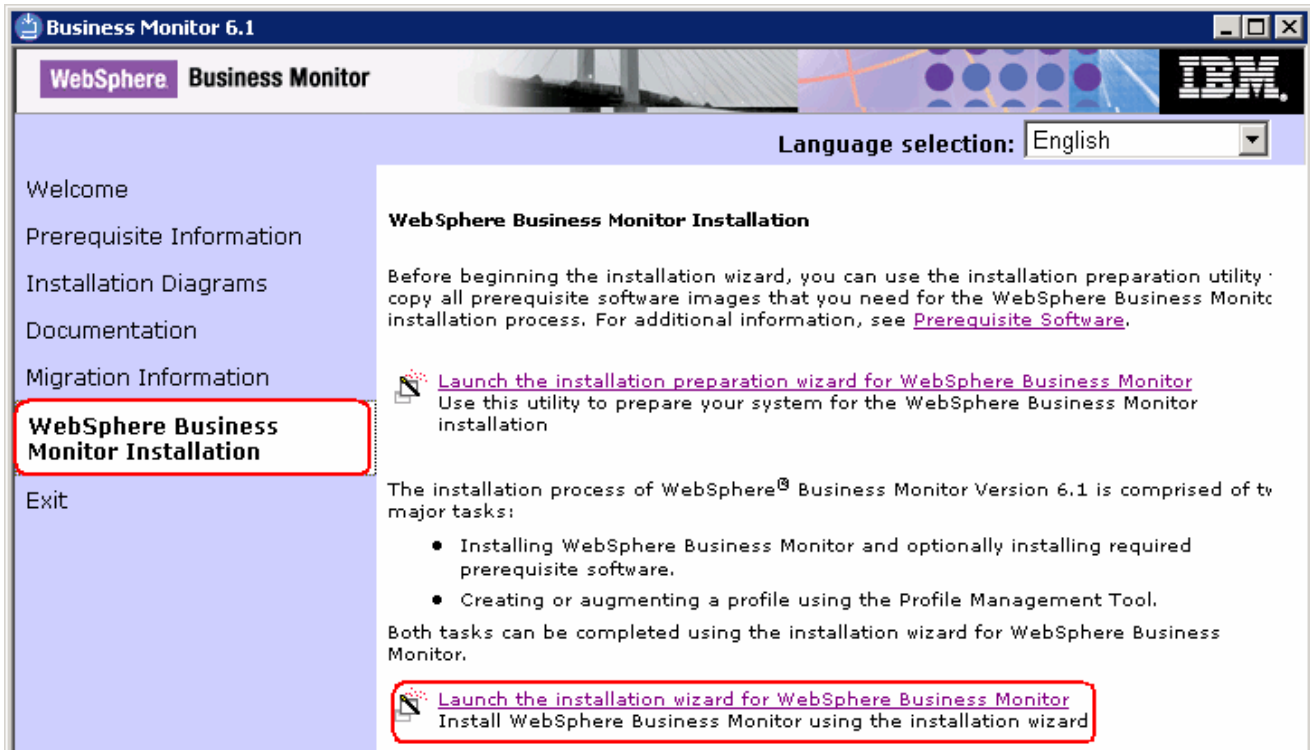
Mandatory Prerequisite:

The InstallShield wizard does not install WebSphere Portal Server V6.0.1.1 in an 'Advanced' installation type. It has to be installed as a prerequisite out of the InstallShield wizard. Follow the instructions at: [Task 2: Install WebSphere Portal Server V6.0 and upgrade to V6.0.1.1](#).

IBM WEBSHERE BUSINESS MONITOR 6.1 – LAB EXERCISE

Follow the instructions below to complete the Portlet-based dashboards installation using the ‘Advanced’ installation type:

1. From the directory where all the pre-requisites and the Monitor driver are extracted (Example:- C:\CDImageV61\), double click on the **launchpad.exe** to run the Common Launchpad program



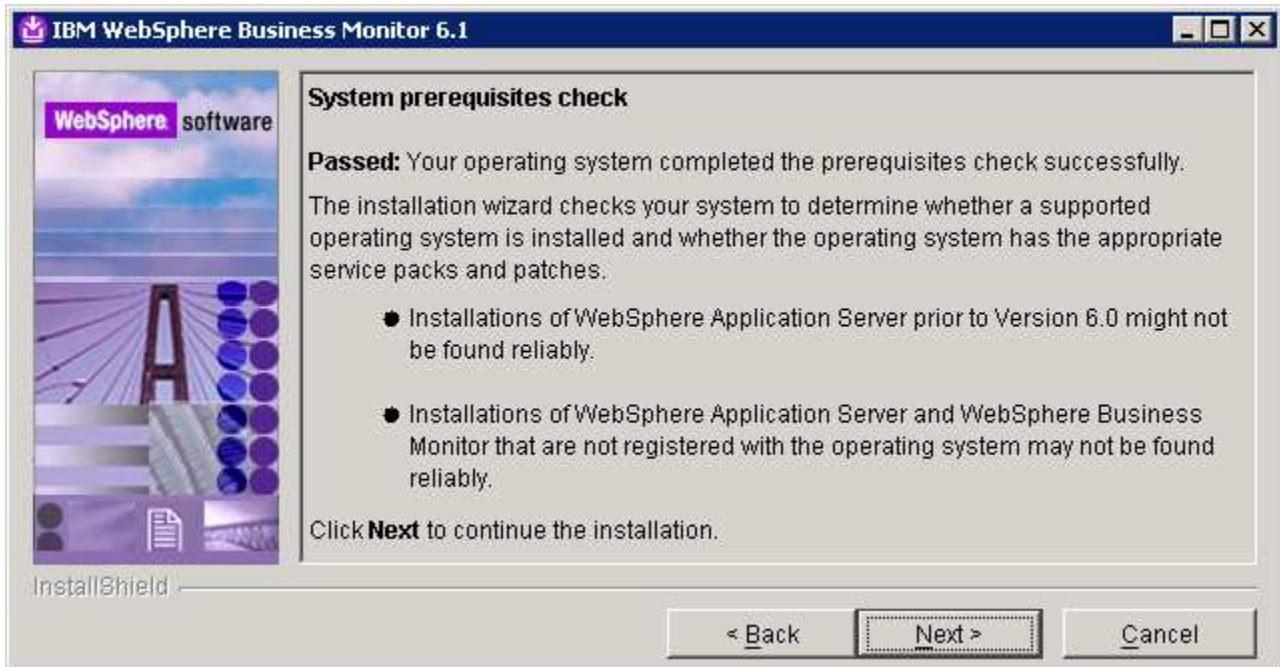
2. On the welcome screen, click on the **WebSphere Business Monitor Installation** link in the left pane and then click the **‘Launch the installation wizard for WebSphere Business Monitor’**. This launches the WebSphere Business Monitor V6.1 InstallShield wizard



3. Click **Next**
4. In the following panel, read the license agreement. If you agree to the terms, select the radio button for **‘I accept the both the IBM and the non-IBM terms’**

IBM WEBSHERE BUSINESS MONITOR 6.1 – LAB EXERCISE

- ___ 5. Click **Next**. The monitor installation program does an operating system prerequisite check and warns if the product installation is not supported.
- ___ 6. In the following panel, read the '**System prerequisite check**' information and act accordingly



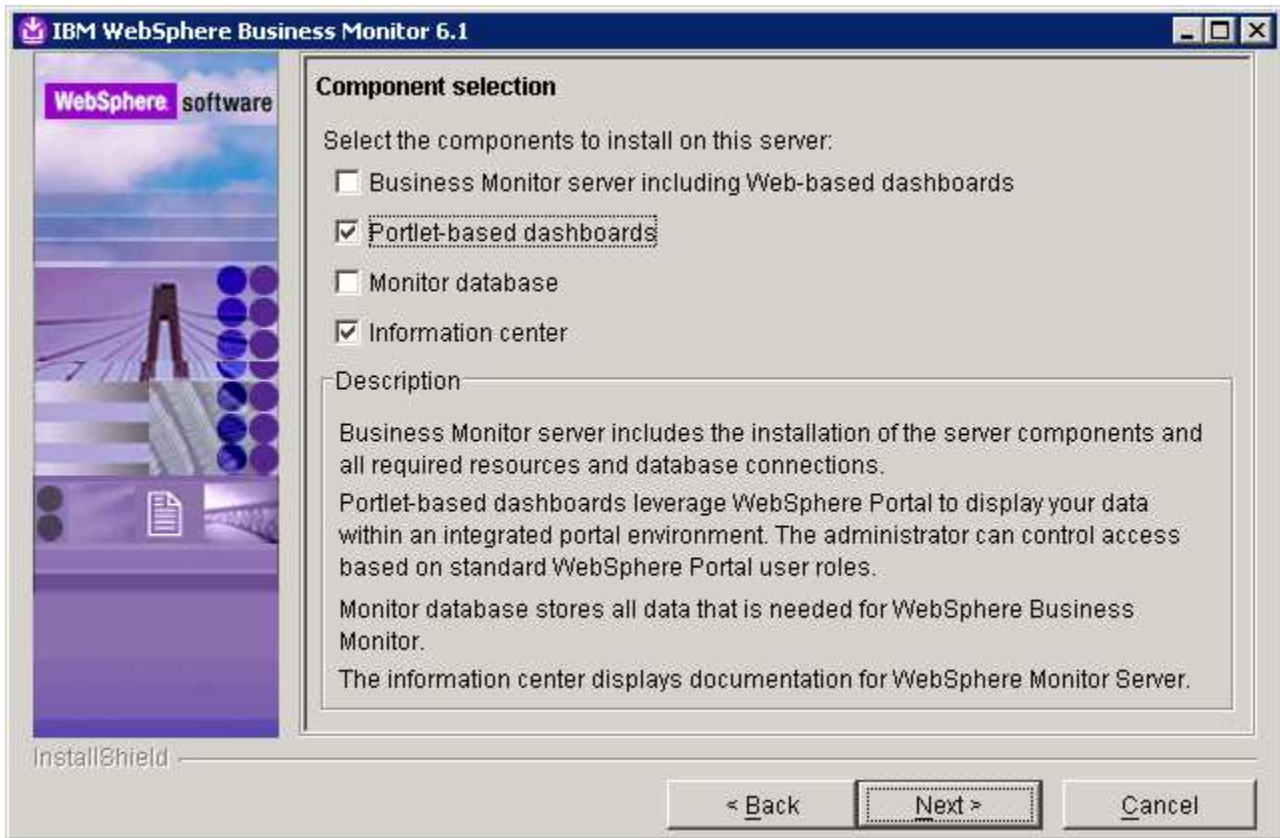
- ___ 7. Click **Next** to continue the installation
- ___ 8. In the following panel, select **Advanced Installation** as the **Installation Type**



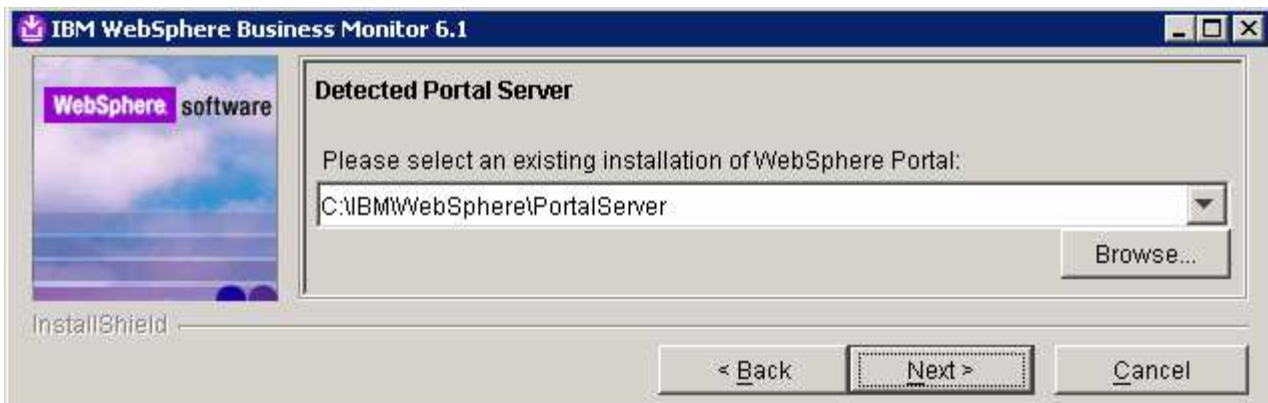
- ___ 9. Click **Next**

IBM WEBSHERE BUSINESS MONITOR 6.1 – LAB EXERCISE

10. In the following 'Component Selection' panel, select only the check box for 'Portlet-based dashboards'. Optionally select the check box for 'Information Center' to install the information center

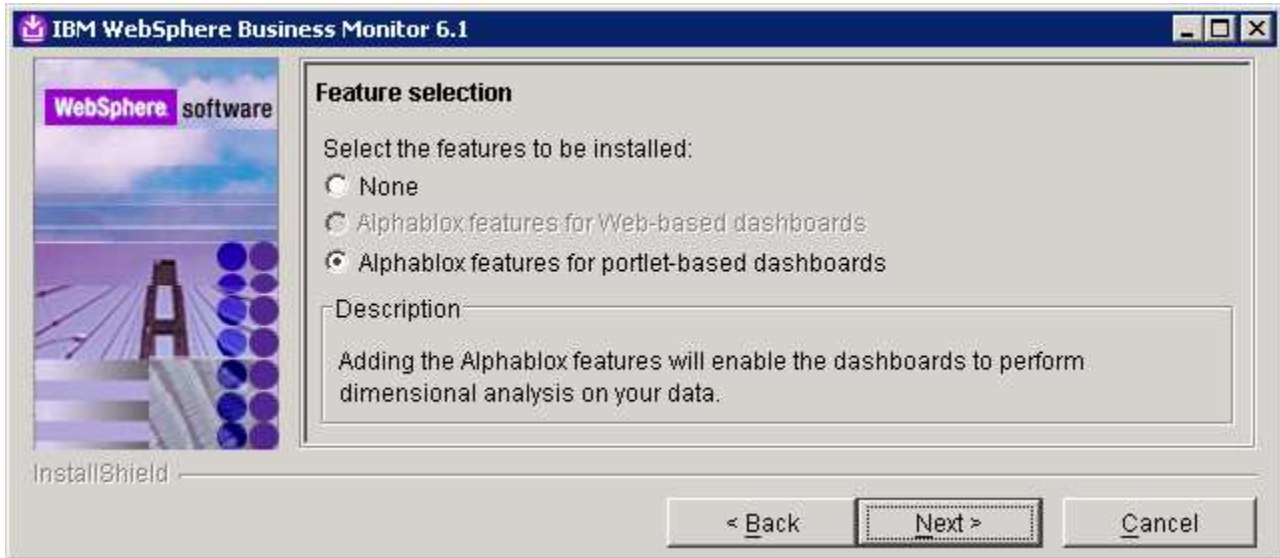


11. Click **Next**
12. In the following 'Detected Portal Server' panel, ensure the WebSphere Portal Server location is correct or click the **Browse** button to select an existing installation location of WebSphere Portal Server V6.0.1.1
- Existing installation location : **C:\IBM\WebSphere\PortalServer**



IBM WEBSHERE BUSINESS MONITOR 6.1 – LAB EXERCISE

- ___ 13. In the following **Feature selection** panel, select the radio button for '**Alphablox features for portlet-based dashboards**'. Select **None** if do not want to install the Alphablox features



- ___ 14. Click **Next**
- ___ 15. In the following panel, enter the administrative security user name and password for WebSphere Application Server and WebSphere Portal Server
- ___ a. WebSphere Application Server user name : **was602admin**
 - ___ b. Password : **was602admin**
 - ___ c. Confirm password : **was602admin**
 - ___ d. Portal Server User name : **wpsadmin**
 - ___ e. Password : **wpsadmin**
 - ___ f. Confirm password : **wpsadmin**

Note: Ensure that you entered the correct user name and password for both the WebSphere Application Server and Portal Server before proceeding further.

IBM WEBSHERE BUSINESS MONITOR 6.1 – LAB EXERCISE

WebSphere Portal administrative security

Specify a user name and password to log in to the WebSphere Portal 6.0.1.1 administrative tools. Because WebSphere Portal 6.0.1.1 is installed into a WebSphere Application Server 6.0.2 environment, you must provide administrative user information for WebSphere Portal and WebSphere Application Server. The administrative users are created in a repository within the monitor server. After the installation finishes, you can add more users, groups, or external repositories.

WebSphere Application Server user name:
was602admin

Password:

Confirm password:

WebSphere Portal user name:
wpsadmin

Password:

Confirm password:

See the [information center](#) for more information about administrative security.

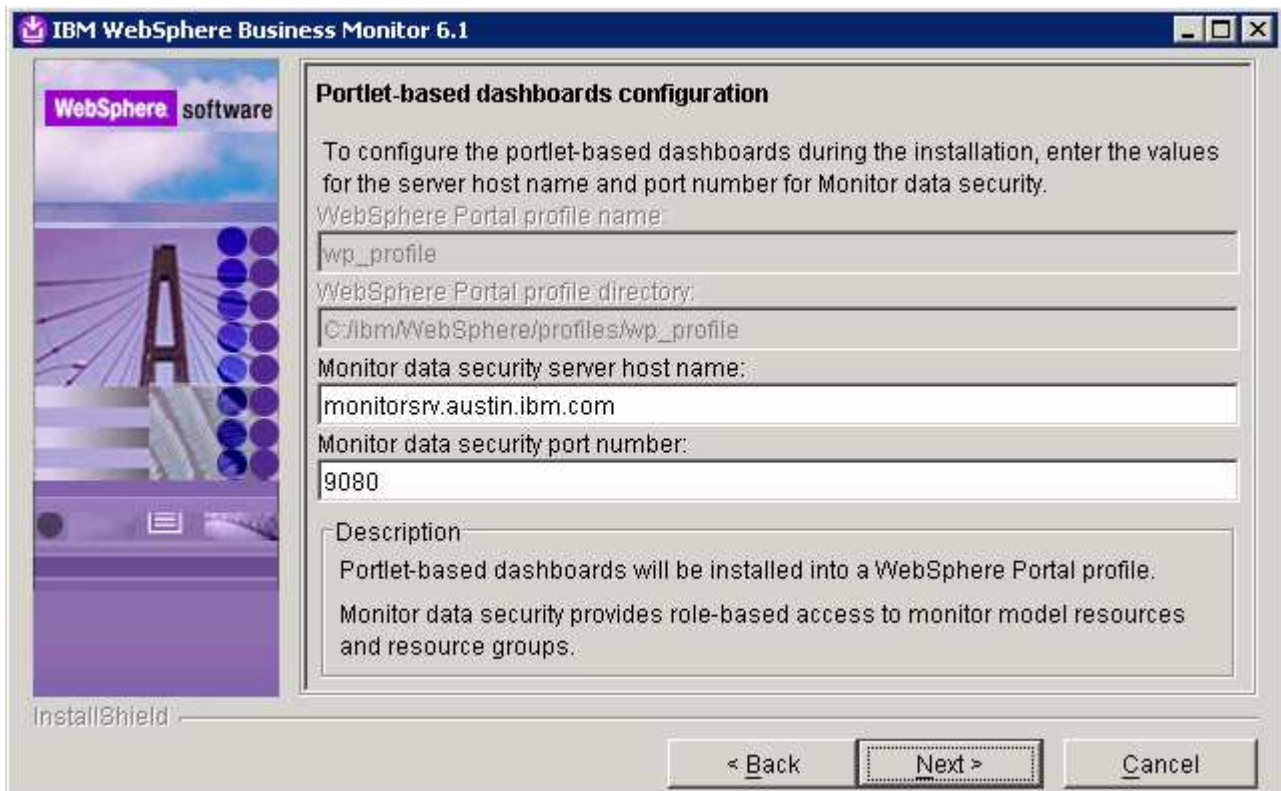
InstallShield

< Back Next > Cancel

- ___ 16. Click **Next**
- ___ 17. In the following **Portlet-based dashboards configuration** panel, enter the following configuration information:
- ___ a. WebSphere Portal profile name : **wp_profile** (not editable)
 - ___ b. WebSphere Portal profile directory : **C:/ibm/WebSphere/wp_profile** (not editable)
 - ___ c. Monitor data security server host name: **<fully qualified name of monitor server machine >**
Example: **monitorsrv.austin.ibm.com**
 - ___ d. Monitor data security port number : **<default HTTP port number of the monitor server>**
Example: **9080**

Note: The Monitor data security server is the WebSphere Business Monitor Server profile. The Monitor data security port number is the default HTTP port number on which the Monitor Server profile is running.

IBM WEBSHERE BUSINESS MONITOR 6.1 – LAB EXERCISE



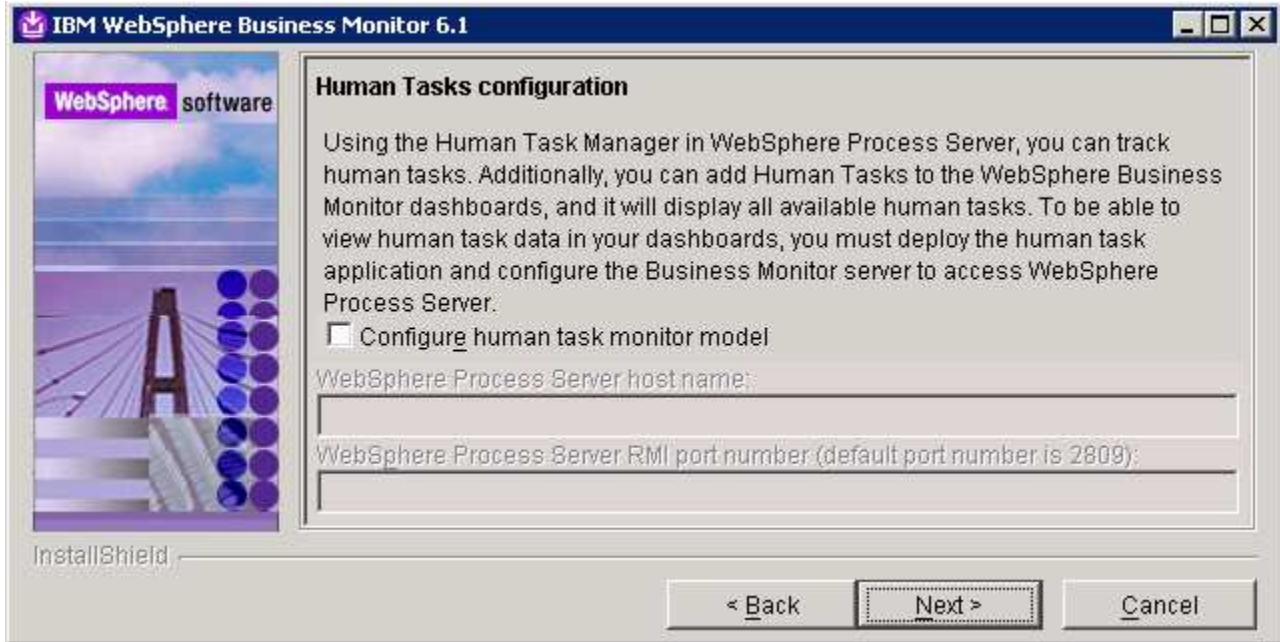
Task: To post-configure the correct 'Monitor data security server host name' and port number, follow the instructions below:

- Start the 'WebSphere_Portal' server and launch the WebSphere Application Server V6.0.2 administrative console. (Example: <http://localhost:10027/admin>), enter the username and password and log on.
- In the left pane, expand **Application Servers** and click the 'WebSphere_Portal' link to the right
- Expand '**Java and Process Management**' and click the '**Process Definition**' link
- Click on '**Java Virtual Machine**' under 'Additional Properties'
- Click on '**Custom Properties**' under 'Additional Properties'
- Click on [DashboardRESTServiceTarget | localhost:9080](#) link
- Update the **Value** field with the correct host name and port (Example: <Fully qualified 'Monitor data security server host name' (Monitor Server)> :< port number>)
- Click **OK**, save to master configuration and restart the '**WebSphere_Portal**' server

____ 18. Click **Next**

____ 19. In the following **Human Tasks Configuration** panel, accept the default

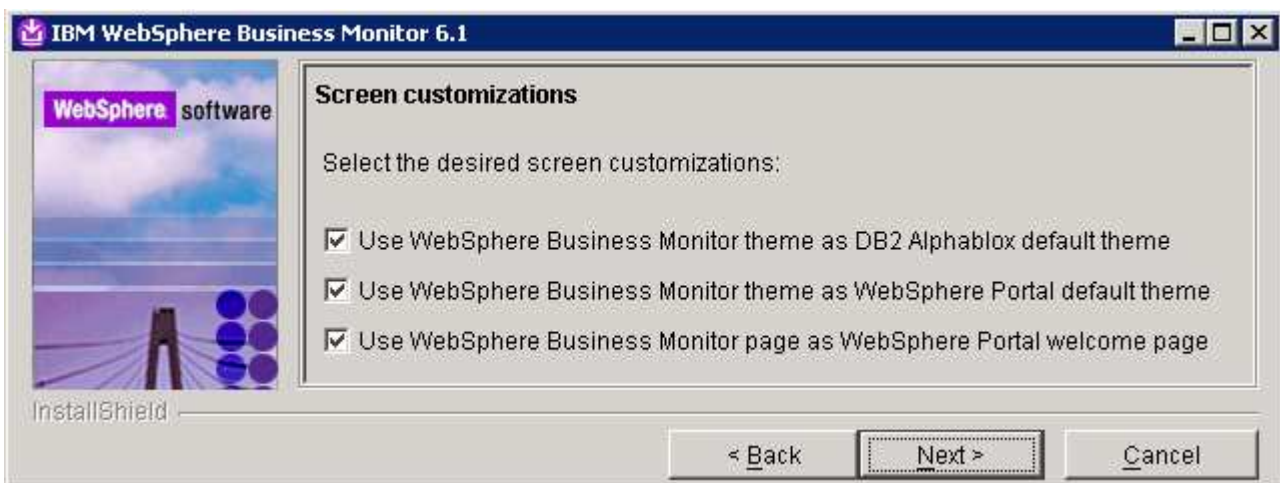
IBM WEBSHERE BUSINESS MONITOR 6.1 – LAB EXERCISE



Note: The Human Task Configuration requires a WebSphere Process Server V6.1 in the environment. The InstallShield wizard uses the information provided in this panel to test the connection and validate that WebSphere Process Server running properly. You can configure this manually later. The instructions are provided at the end of the document. Visit '**Task 3:- Human Task Configuration for portlet based dashboards**'

___ 20. Click **Next**

___ 21. In the following '**Screen customizations**' panel, select the check boxes next to the desired screen customizations



___ 22. Click **Next**

___ 23. In the following '**Database configuration**' panel, enter the following:

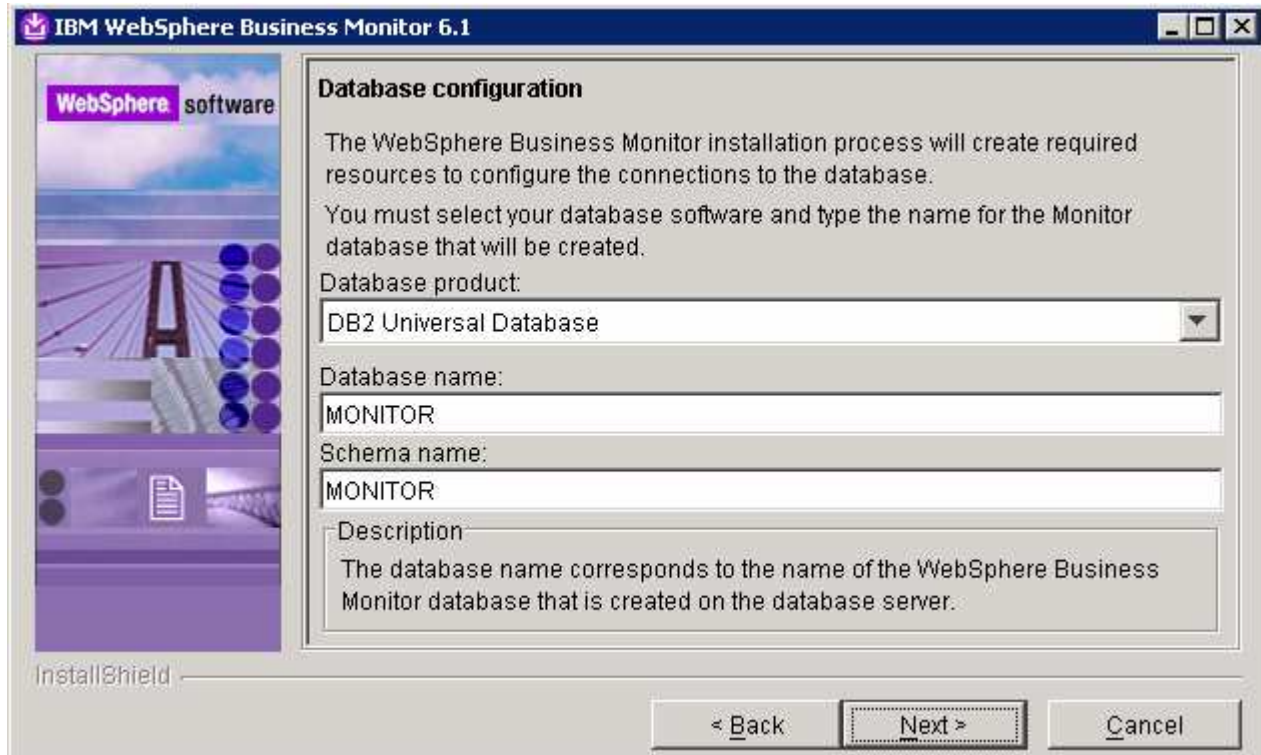
___ a. Database product : **DB2 Universal Database**

IBM WEBSPHERE BUSINESS MONITOR 6.1 – LAB EXERCISE

__ b. Database name : **MONITOR**

__ c. Schema name : **MONITOR**

Important: Enter the correct database and schema names that you had given while creating the MONITOR database on machine one.



___ 24. Click **Next**

___ 25. In the following 'Additional database configuration' panel, enter the following information :

__ a. User name : **db2admin**

__ b. Password : **db2admin**

__ c. Confirm Password : **db2admin**

__ d. JDBC driver class path files directory

: **C:\IBM\WebSphere\AppServer\universalDriver.wbm\lib**

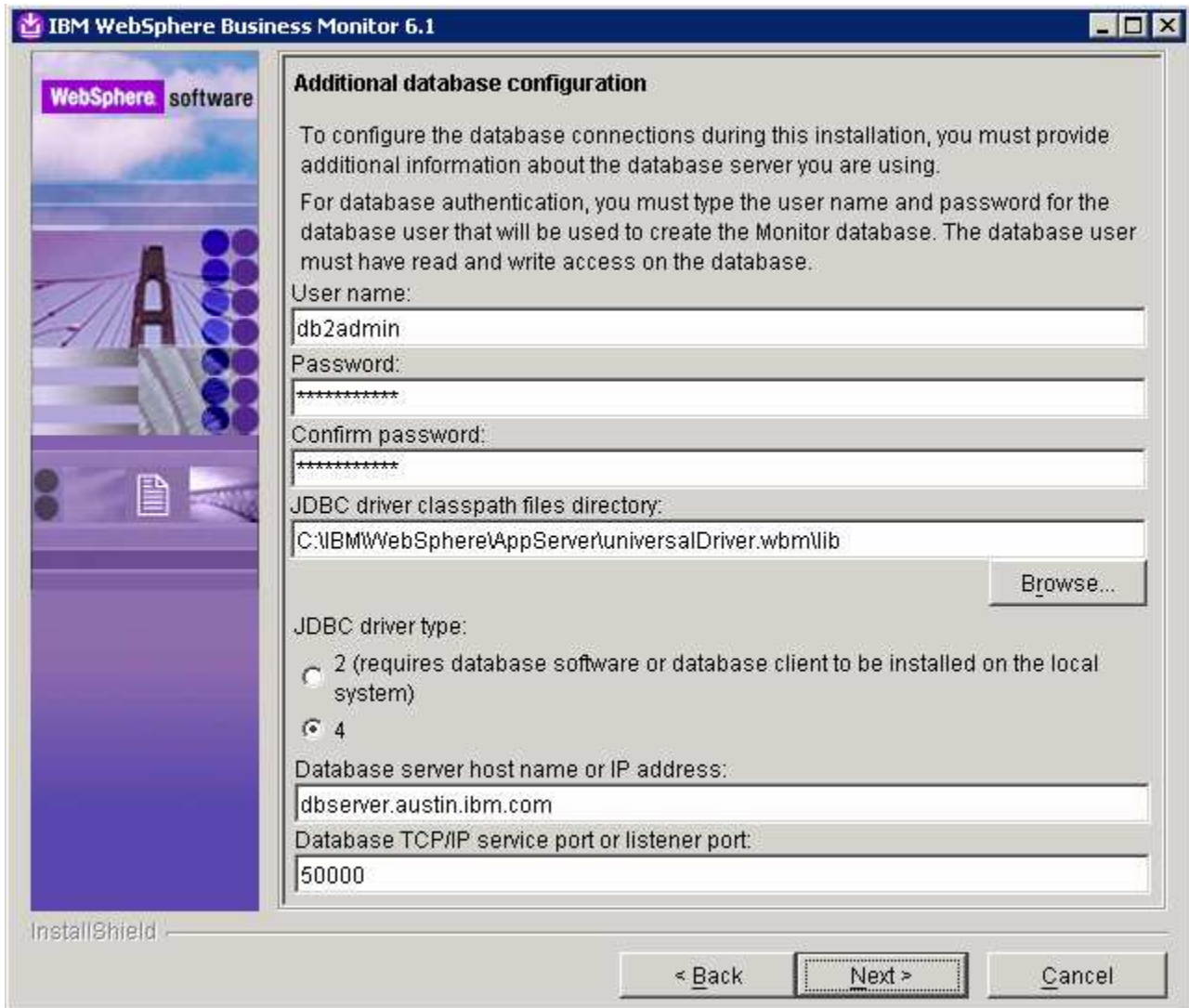
__ e. JDBC driver type : **4**

__ f. Database server host name : **dbserver.austin.ibm.com**

__ g. Server port : **50000**

Important: Enter the correct user name, password you used to create the MONITOR database. Also provide the correct port number on which the database server is running. The database server host name is the fully qualified host name of the machine where the database server is running (Machine 1 in this scenario).

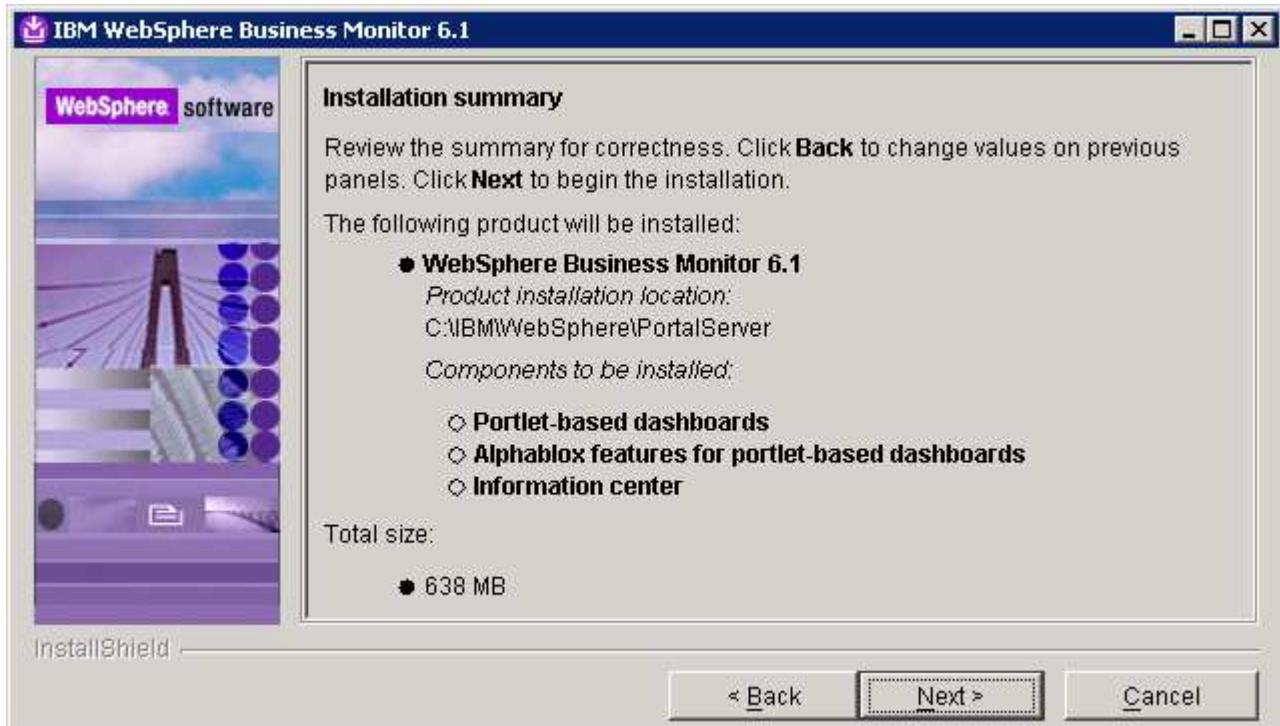
IBM WebSphere Business Monitor 6.1 – LAB EXERCISE



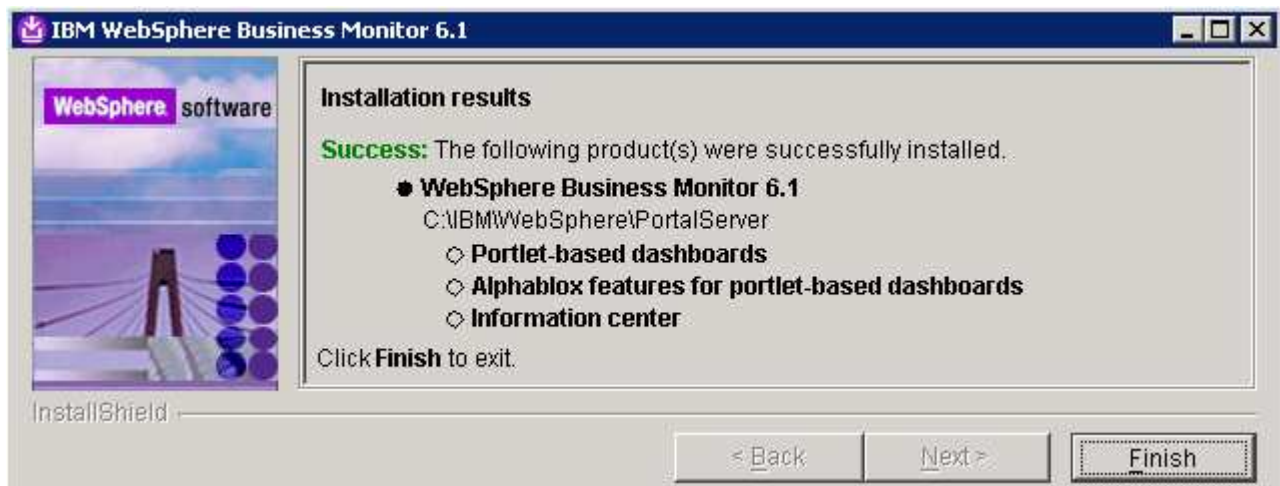
___ 26. Click **Next**

___ 27. Review the installation summary in the following panel

IBM WEBSHERE BUSINESS MONITOR 6.1 – LAB EXERCISE



- ___ 28. Click **Next**. The installation progresses
- ___ 29. Review the **Installation results** summary of the WebSphere Business Monitor V6.1 components and ensure all the components listed are successfully installed



- ___ 30. Click the **Finish** button to exit the installation wizard

What you did in this exercise

You obtained the Monitor 6.1 drivers and pre-requisites, extracted them to create an on-disk image making it easy for the Launchpad to run without an interruption. You used the InstallShield program to install the Monitor server and its components in a deployment manager environment on machine one, created the MONITOR database by manually running the database scripts on machine one, installed monitor server and its components in a federated server environment on machine 2, installed WebSphere Portal Server V6.0.1.1 and Portlet-based dashboards including Alphablox views on machine 3.

Task 2: Install WebSphere Portal Server V6.0 and upgrade to V6.0.1.1

In this section of the lab, the WebSphere Portal Server V6.0 is installed and then upgraded to version 6.0.1.1 to meet the requirements of portlet-based dashboards installation. Obtain the WebSphere Portal Server V6.0 software and extract in such a way to create the correct on-disk structure for the Launchpad to run

___ 1. The following are the installation files needed to install the WebSphere Portal Server V6.0

Product Name	File Name
WebSphere Portal Server V6.0.0 Setup	W-Setup.zip
WebSphere Portal Server V6.0.0 CD 1	W-1.zip
WebSphere Portal Server V6.0.0 CD 3	W-3.zip
WebSphere Portal Server V6.0.0 CD 4	W-4.zip
WebSphere Portal Server V6.0.0 CD 5	W-5.zip

___ 2. The following are the installation archives needed to update the WebSphere Portal Server V6.0 to version 6.0.1.1

Product Name	File Name
WebSphere Application Server FP 6.0.2.17 Installer and FP17	6.0.2-WS-WAS-WinX32-FP00000017.zip
JDK FP21	6.0.2-WS-WASJavaSDK-WinX32-FP00000021.zip
Portal FP 6.0.1.1 Installer	PortalUpdateInstallerWIN.zip
FP 6.0.1.1	WP_PTF_6011.jar

___ a. 6.0.2-WS-WAS-WinX32-FP00000017.zip (updates WebSphere Application Server V6.0.2.9 base. Includes WebSphere Application Server update installer)

___ b. 6.0.2-WS-WASJavaSDK-WinX32-FP00000021.zip (updates WebSphere Application Server SDK)

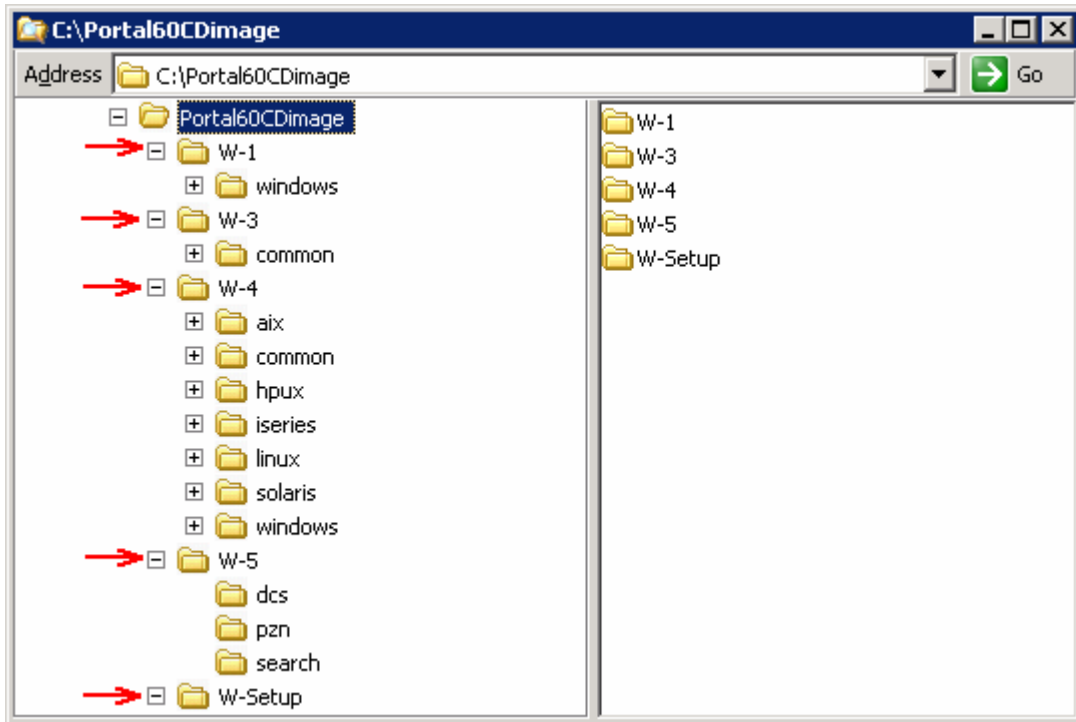
___ c. WP_PTF_6011.jar (updates WebSphere Portal Server to version 6.0.1.1)

___ d. PortalUpdateInstallerWIN.zip (update installer for WebSphere Portal Server)

___ 3. Download the Portal installation archives to a directory for example : C:\Portal60Driver\

___ a. Extract the WebSphere Portal Server installation archives into a directory named for example, C:\Portal60CDImage\ to create an on-disk image and confirm that the directory structure was extracted correctly. It should appear similar to the picture shown below:

IBM WEBSHERE BUSINESS MONITOR 6.1 – LAB EXERCISE

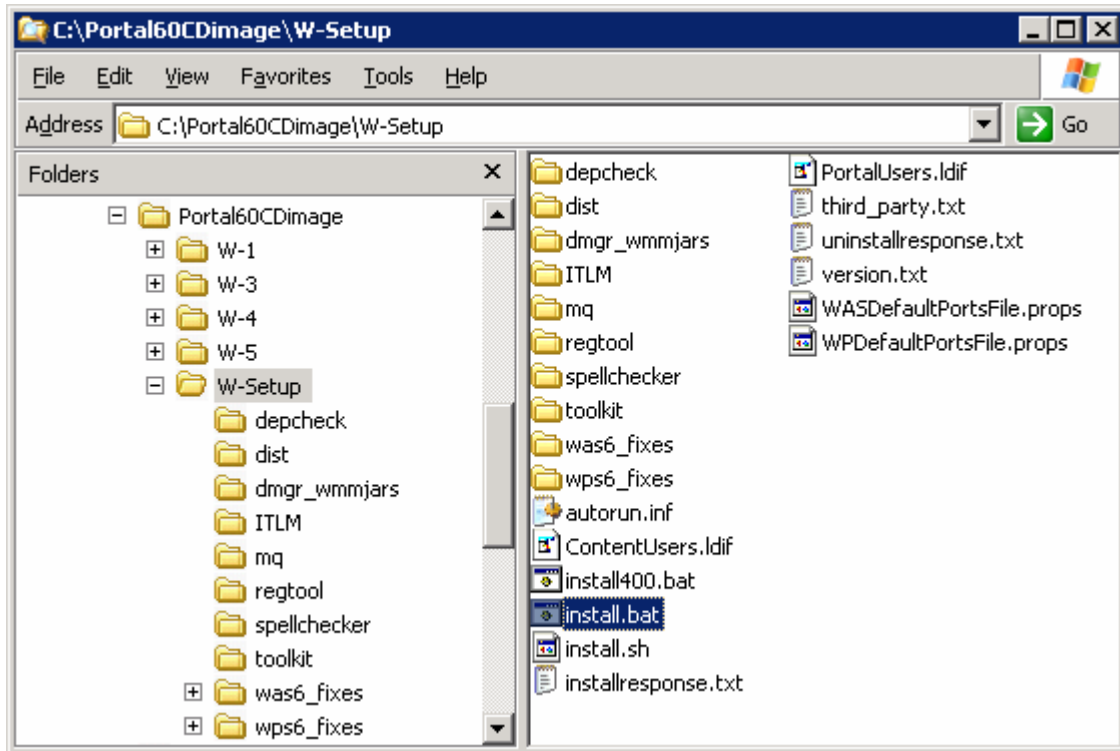


Follow the instructions below to complete the WebSphere Portal Server V6.0 installation:

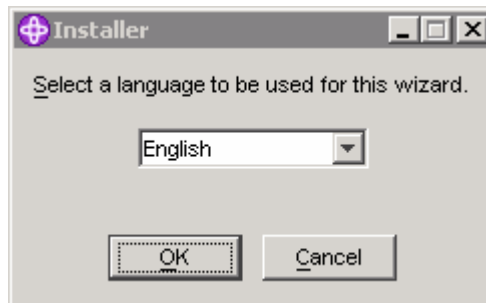


4. From the directory where the WebSphere Portal Server V6.0 installation archives are extracted (Example:- **C:\Portal60CDimage**), navigate to the **W-Setup** directory and double click on **install.bat** to launch the Portal launchpad program

IBM WEBSHERE BUSINESS MONITOR 6.1 – LAB EXERCISE

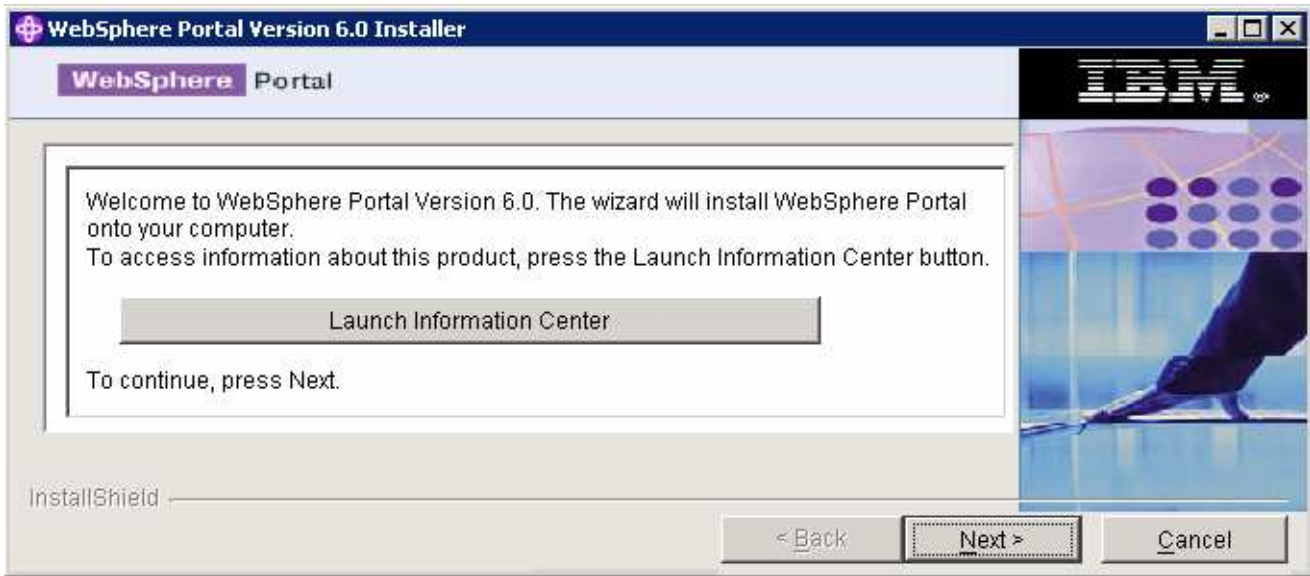


___ 5. Select the language as **English** or the language you want from the drop down list

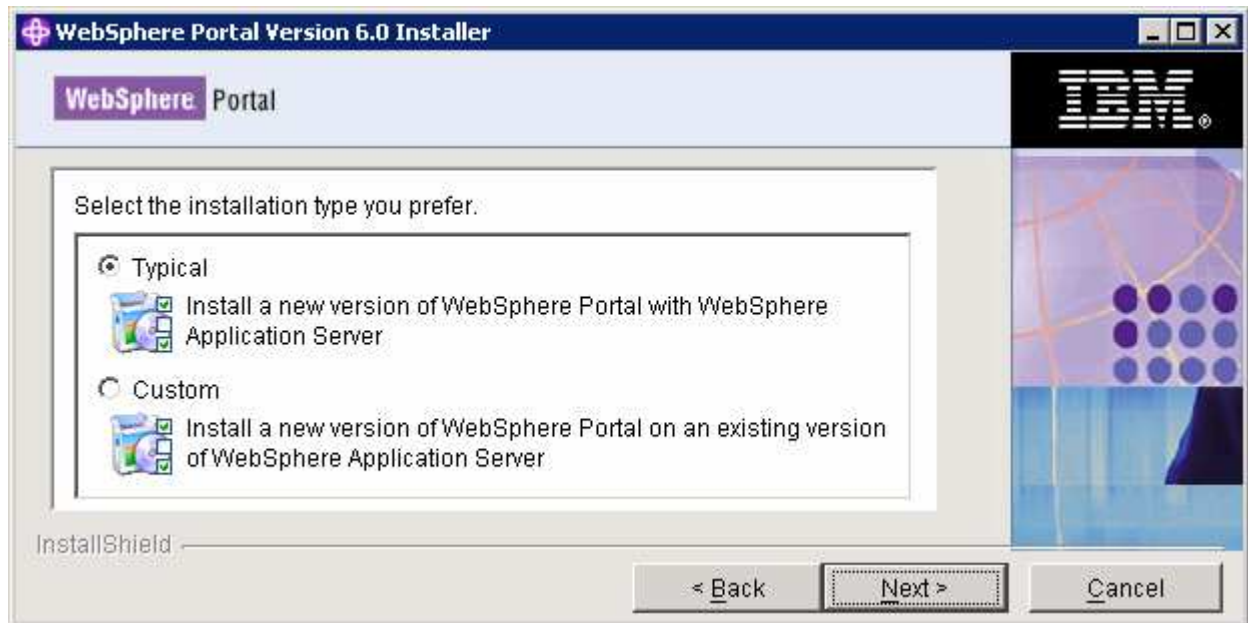


___ 6. Click **OK**. The WebSphere Portal Server V6.0 Installer wizard is launched

IBM WEBSHERE BUSINESS MONITOR 6.1 – LAB EXERCISE

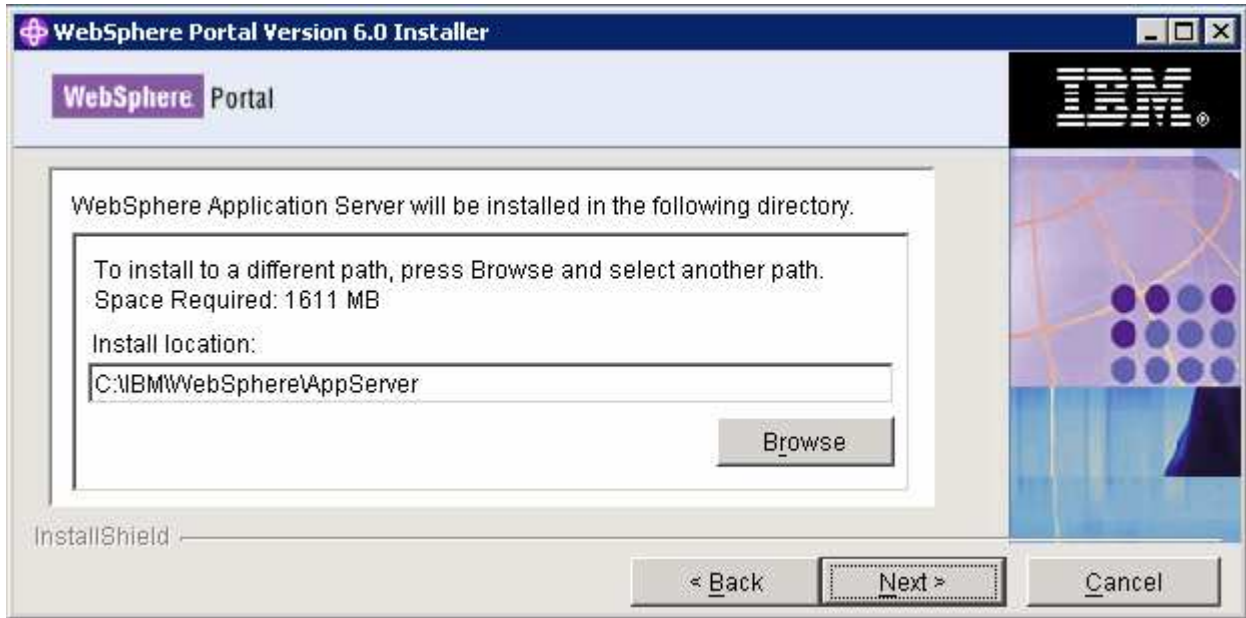


- ___ 7. Click **Next**
- ___ 8. In the following panel, read the license agreement. If you agree to the terms, select the radio button for **'I accept both the IBM and the non-IBM terms'**
- ___ 9. Click **Next**
- ___ 10. In the following panel, ensure that the radio button for **Typical** is selected

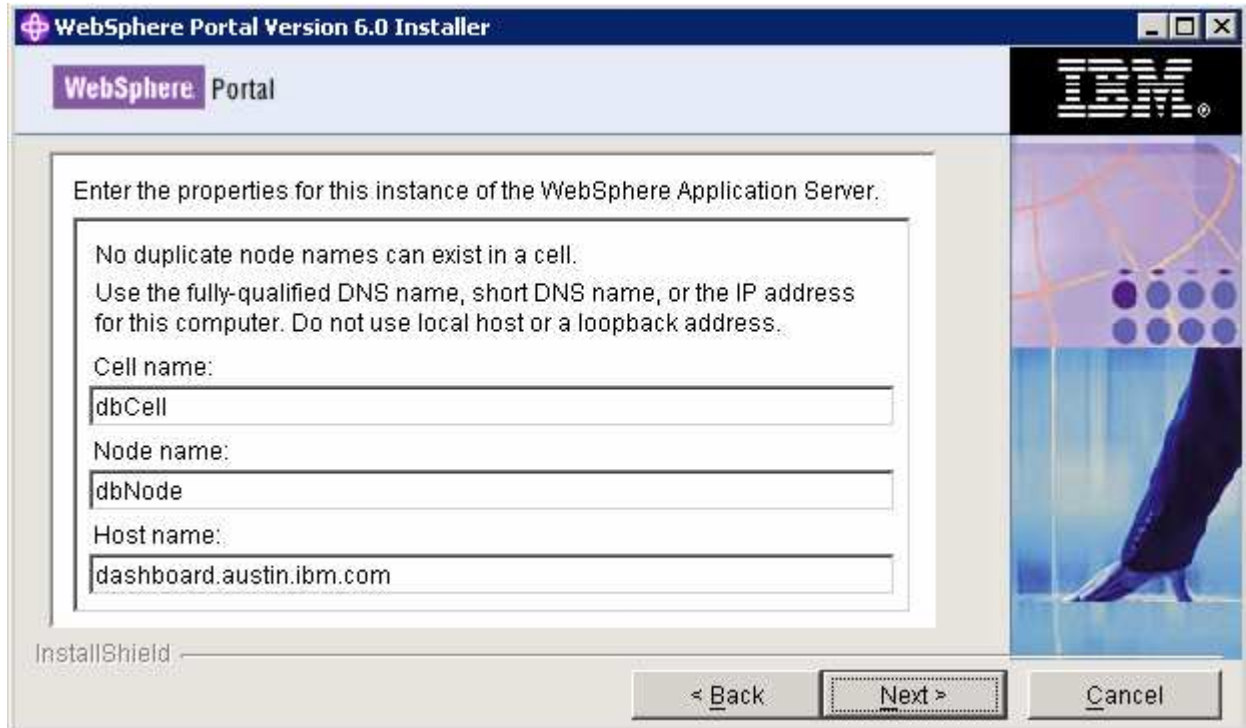


- ___ 11. In the following panel, click the **Browse** button and specify a different directory for the WebSphere Application Server **'Install location'**
 - ___ a. Install location : **C:\IBM\WebSphere\AppServer**

IBM WEBSHERE BUSINESS MONITOR 6.1 – LAB EXERCISE



- ___ 12. Click **Next**
 - ___ 2. In the following panel, set the cell name, node name and the host name
 - ___ a. **Cell Name** : **dbCell**
 - ___ b. **Node Name** : **dbNode**
 - ___ c. **Host Name** : **< fully qualified host name of the machine >**
- Example: dashboard.austin.ibm.com**



IBM WEBSHERE BUSINESS MONITOR 6.1 – LAB EXERCISE

- ___ 13. Click **Next**

- ___ 3. In the following panel, enter the administrative User ID and Password for the WebSphere Application Server V6.0.2
 - ___ a. User ID : **was602admin**
 - ___ b. Password : **was602admin**
 - ___ c. Confirm Password : **was602admin**



- ___ 14. Click **Next**

- ___ 15. In the following panel, select the radio button for '**Do not install WebSphere Process Server**'

IBM WEBSHERE BUSINESS MONITOR 6.1 – LAB EXERCISE



___ 16. Click **Next**

___ 17. In the following panel, accept the default **'WebSphere Portal Installation directory'**

___ a. WebSphere Portal Installation directory : **C:\IBM\WebSphere\PortalServer**



___ 18. Click **Next**

___ 19. In the following panel, enter the administrative User ID and Password for the WebSphere Portal Server

IBM WEBSHERE BUSINESS MONITOR 6.1 – LAB EXERCISE

- ___ a. User ID : **wpsadmin**
- ___ b. Password : **wpsadmin**
- ___ c. Confirm Password : **wpsadmin**



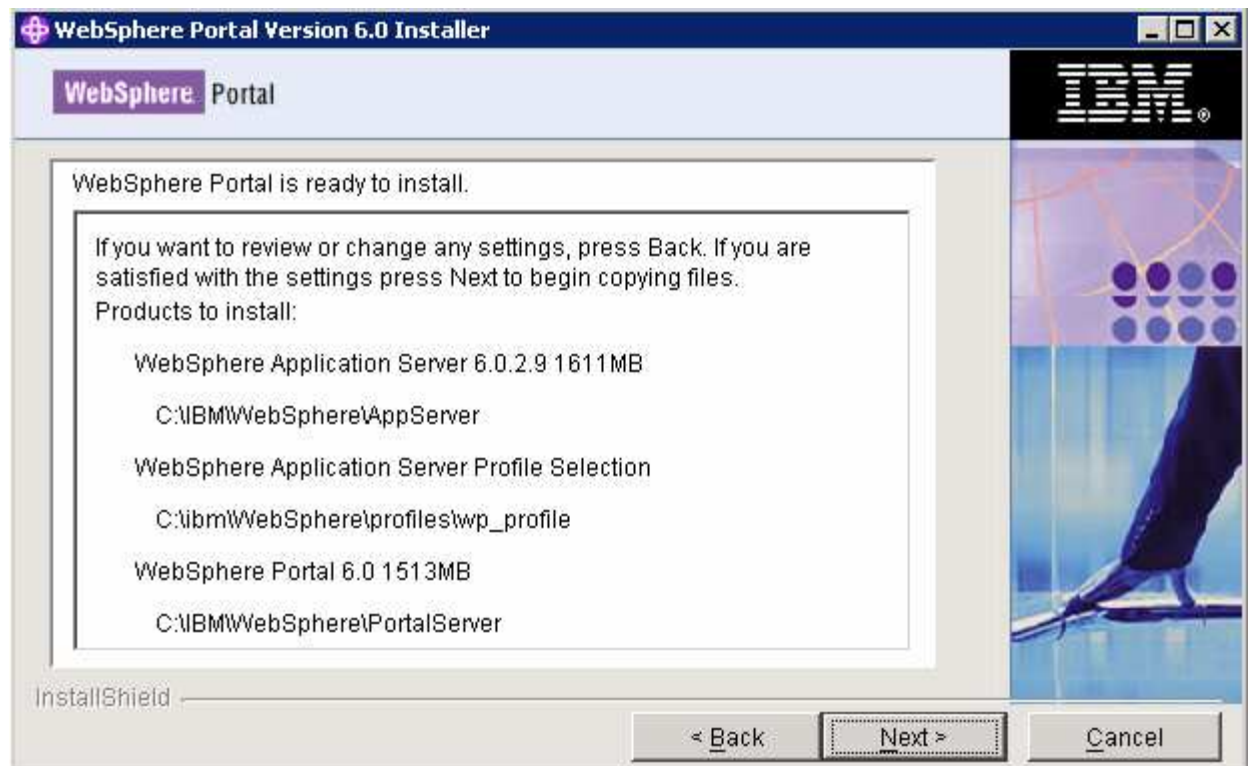
- ___ 20. Click **Next**
- ___ 21. In the following panel, do not select any products listed to run as a Windows service. Accept the defaults

IBM WEBSHERE BUSINESS MONITOR 6.1 – LAB EXERCISE



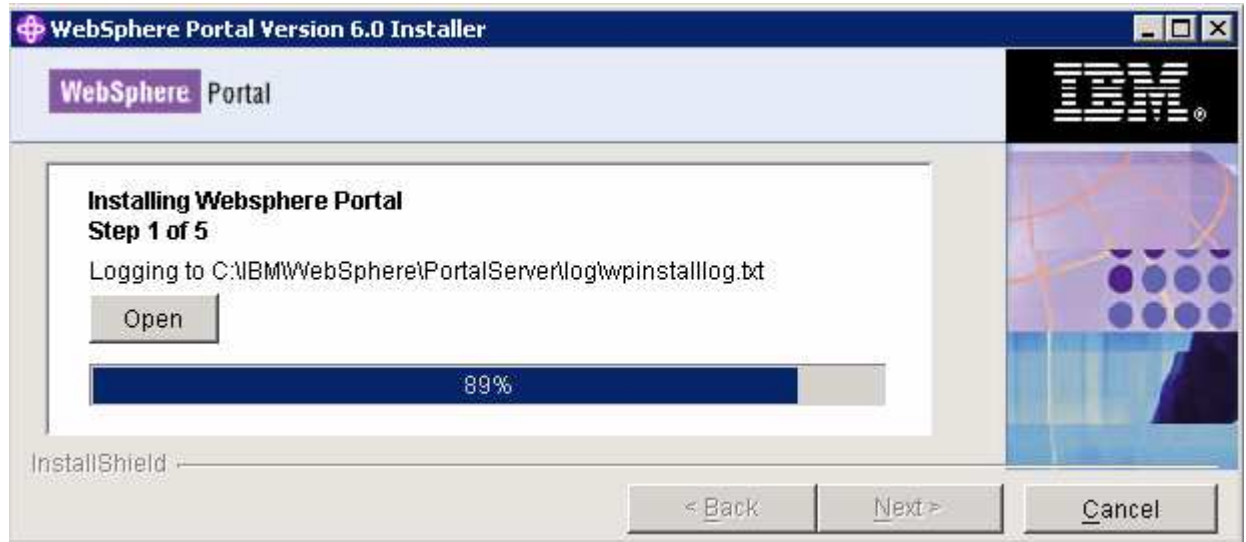
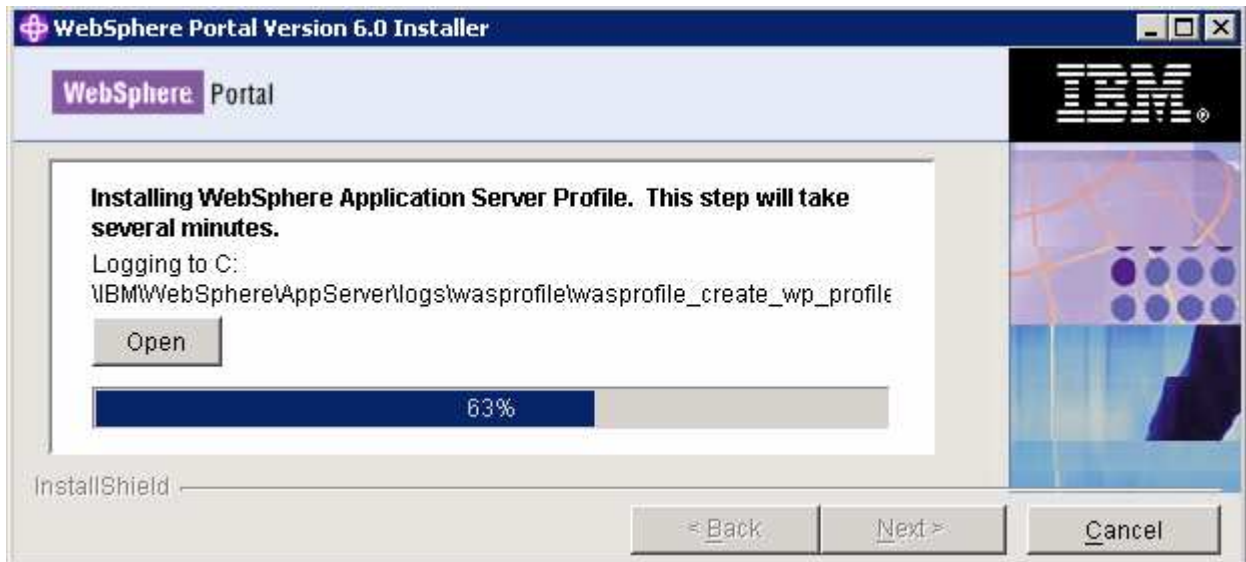
___ 22. Click **Next**

___ 23. Review the installation **Summary** in the following panel

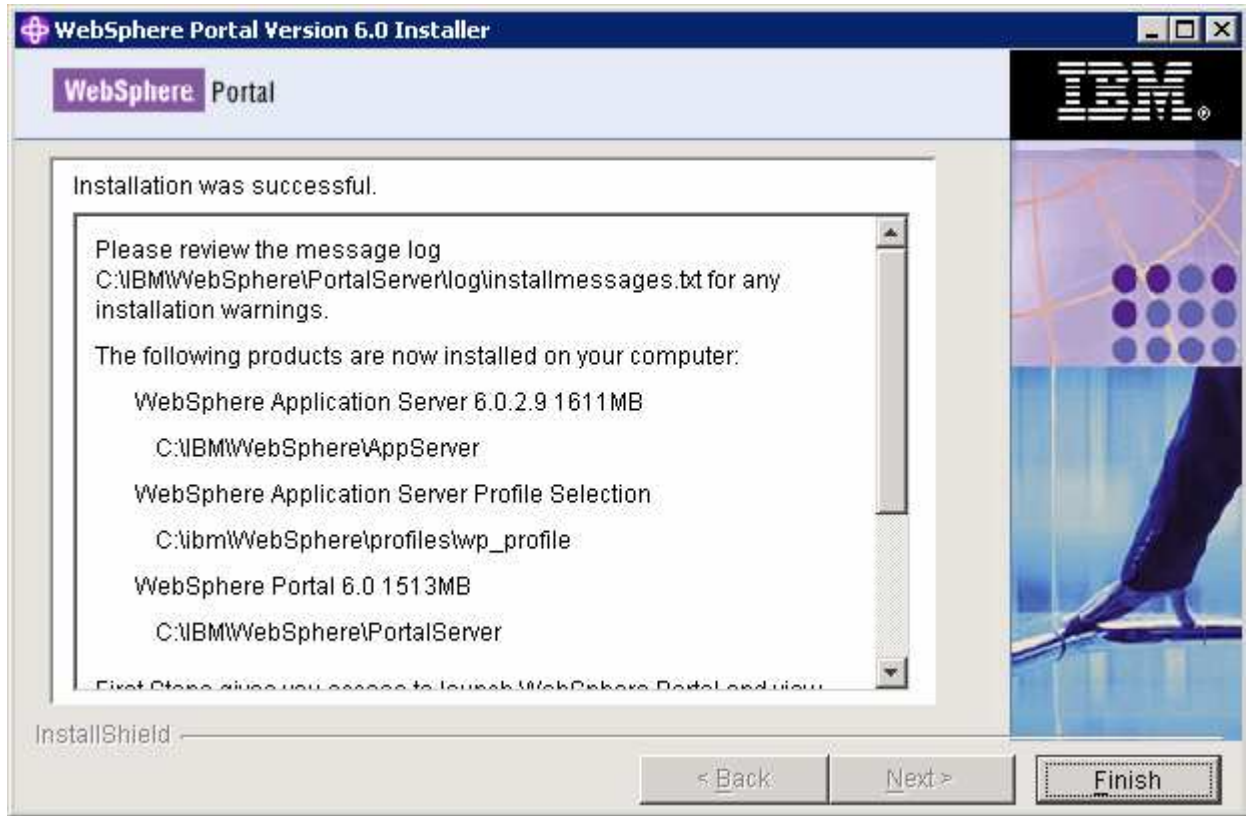


IBM WEBSHERE BUSINESS MONITOR 6.1 – LAB EXERCISE

- ___ 24. Click **Next**
- ___ 25. The installation progresses with WebSphere Application Server, creates a WebSphere Application Server profile and eventually installs WebSphere Portal Server



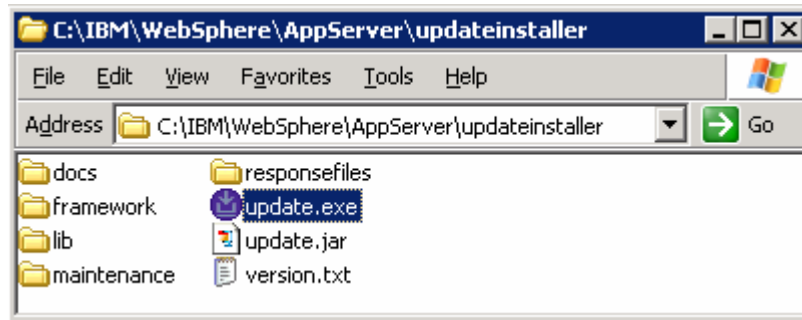
IBM WEBSHERE BUSINESS MONITOR 6.1 – LAB EXERCISE



____ 26. Click **Finish**

I. Updating WebSphere Application Server V6.0.2.9 base to V6.0.2.17

- ___ 1. Stop the WebSphere Application Server and the Portal Server
- ___ 2. Obtain the WebSphere Application Server V6.0.2 Fix Pack 17 and the update installer
 - ___ a. 6.0.2-WS-WAS-WinX32-FP00000017.zip (This archive includes both the fix pack and the update installer)
 - ___ b. 6.0.2-WS-WASJavaSDK-WinX32-FP00000021.zip (updates WebSphere Application Server Java SDK)
- ___ 3. Navigate to the <WAS602_HOME> directory and remove the contents of the **updateinstaller** directory. Where as <WAS602_HOME> is the path of the WebSphere Application Server installation
 - <WAS602_HOME> : C:\IBM\WebSphere\AppServer
- ___ 4. Unpack the **6.0.2-WS-WAS-WinX32-FP00000017.zip** file into the <WAS602_HOME>\updateinstaller directory. The unpacked **6.0.2-WS-WAS-WinX32-FP00000017.zip** file to the **updateinstaller** directory should look like the picture shown below:

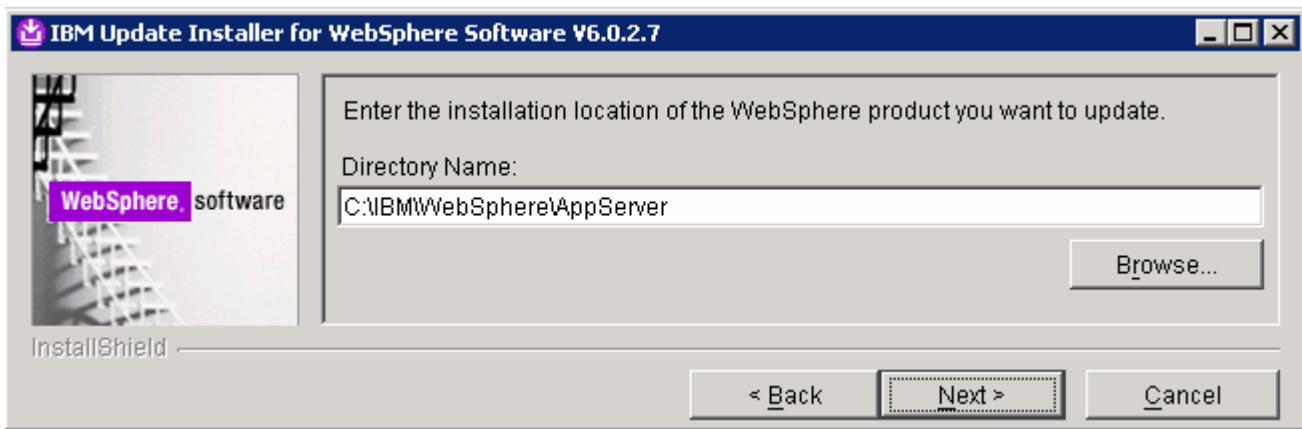


- ___ 5. Navigate to the <WAS602_HOME>\updateinstaller and double click **update.exe** to launch the WebSphere Application Server update installer wizard
- ___ 6. Read the instructions on the update installer **Welcome** screen

IBM WEBSHERE BUSINESS MONITOR 6.1 – LAB EXERCISE

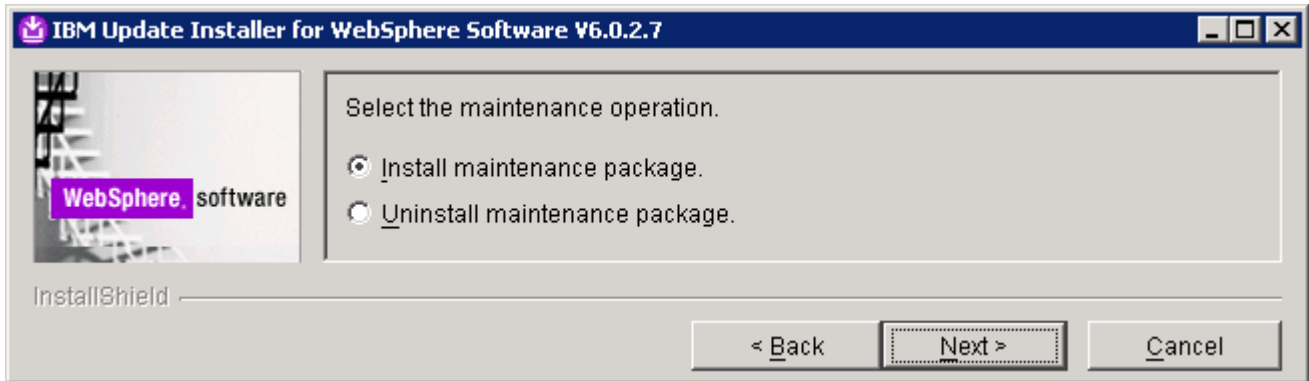


- ___ 7. Click **Next**
- ___ 8. In the following panel, ensure the WebSphere Application Server V6.0.2.9 location is set to **<WAS602_HOME>**. Click the browse button to set the correct location
 - ___ a. Directory Name : **C:\WebSphre\AppServer**



- ___ 9. Click **Next**
- ___ 10. In the following panel, select the radio button for **'Install maintenance package'**

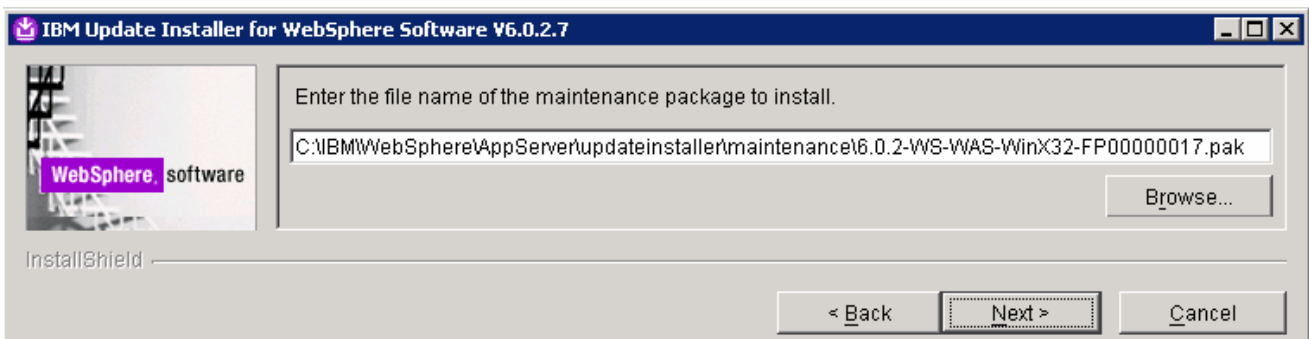
IBM WEBSHERE BUSINESS MONITOR 6.1 – LAB EXERCISE



___ 11. Click **Next**

___ 12. In the following panel, click the **Browse** button and navigate to the **maintenance** directory to locate the **6.0.2-WAS-WAS-WinX32-FP00000017.pak** file

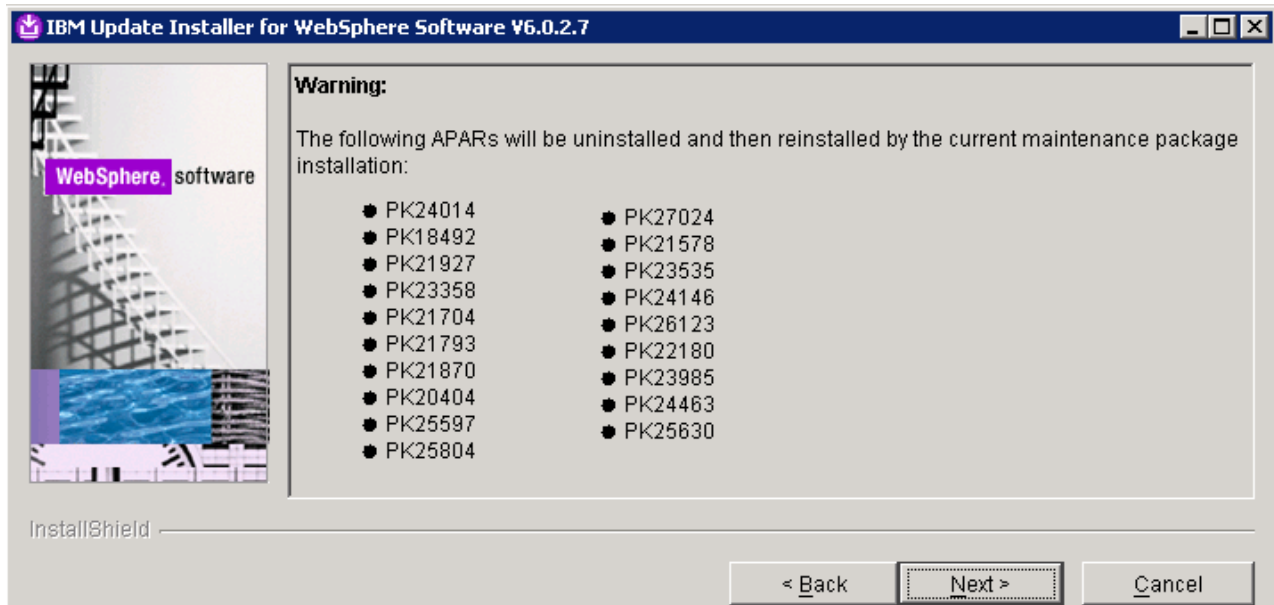
___ a. Maintenance package location: **<WAS602_HOME>\updateinstaller\maintenance**



___ 13. Click **Next**

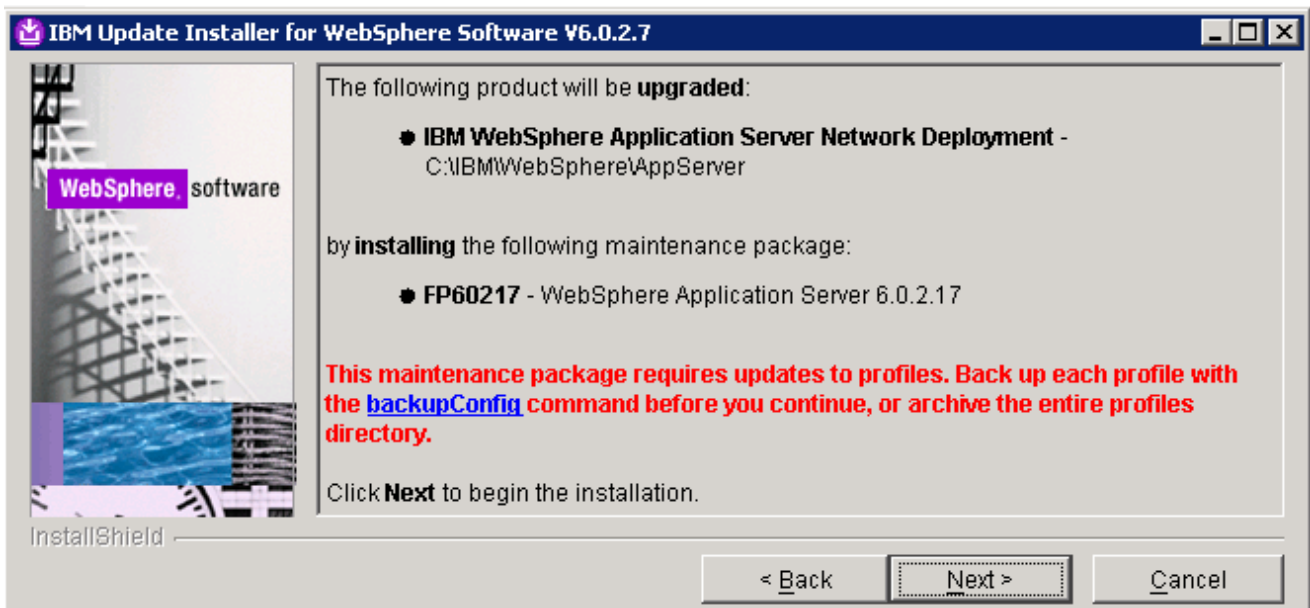
___ 14. In the following panel, read the **Warning**

IBM WEBSHERE BUSINESS MONITOR 6.1 – LAB EXERCISE



___ 15. Click **Next**

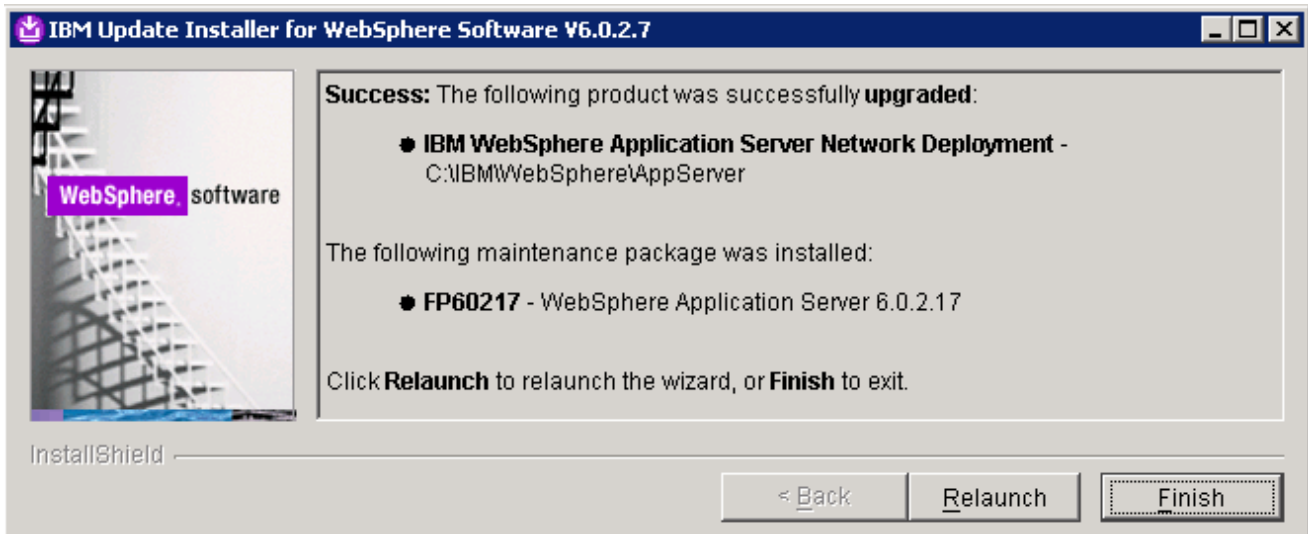
___ 16. Review the fix pack installation summary in the following panel



___ 17. Click **Next** to continue with the installation

___ 18. The installation progresses and takes a few minutes

IBM WEBSHERE BUSINESS MONITOR 6.1 – LAB EXERCISE



___ 19. Click **Finish** once the installation is complete

Note: To investigate the update logs: `<WAS602_HOME>/logs/update`. A directory named after the fix pack (Example: **6.0.2-WS-WAS-WinX32-FP00000017-Operation**) is created under the **update** directory.

___ 20. Open a command line window and change directory to `<WAS60_HOME>bin` and run the **versionInfo** command. Ensure that the WebSphere Application Server V6.0.2.9 is upgraded to version 6.0.2.17. Look for the following message traced as a result of the **versionInfo** command

```

C:\WINDOWS\system32\cmd.exe
C:\IBM\WebSphere\AppServer\bin>versionInfo.bat
WUER0010I: Copyright (c) IBM Corporation 2002, 2005; All rights reserved.
WUER0011I: WebSphere Application Server Release 6.0
WUER0012I: VersionInfo reporter version 1.15.3.1, dated 4/25/05

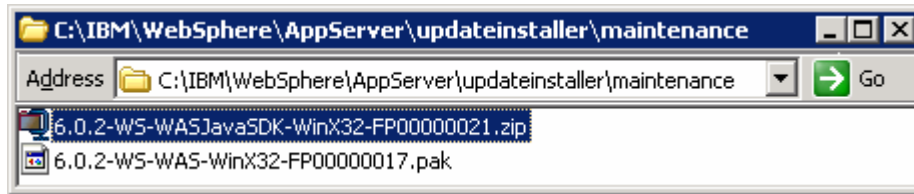
-----
IBM WebSphere Application Server Product Installation Status Report
-----

Name          IBM WebSphere Application Server - ND
Version       6.0.2.17
ID            ND
Build Level   cf170648.10
Build Date    11/29/06
  
```

___ 21. Close the command line window

___ 22. Now update the WebSphere Application Server V6.0.2.17 with SDK Fix Pack 21. Copy the **6.0.2-WS-WASJavaSDK-WinX32-FP00000021.zip** file to the **maintenance** directory (`<WAS602_HOME>updateinstaller\maintenance`)

IBM WEBSHERE BUSINESS MONITOR 6.1 – LAB EXERCISE



- ___ 23. Navigate to the **<WAS602_HOME>\updateinstaller** and double click **update.exe** to launch the WebSphere Application Server update installer wizard
- ___ 24. Read the instruction on the update installer **Welcome** screen and Click **Next**
- ___ 25. In the following panel, ensure the WebSphere Application Server V6.0.2.17 location is set to **<WAS602_HOME>**. Click the browse button to set the correct location
 - ___ a. Directory Name : **C:\WebSphre\AppServer**
- ___ 26. Click **Next**
- ___ 27. In the following panel, select the radio button next to **“Install maintenance package”** and click **Next**
- ___ 28. In the following panel, click the **Browse** button and navigate to the **maintenance** directory to locate the **6.0.2-WS-WASJavaSDK-WinX32-FP00000021.zip** file
 - ___ a. Maintenance package location: **<WAS602_HOME>\updateinstaller\maintenance**
- ___ 29. Click **Next**
- ___ 30. Review the fix pack installation summary in the following panel and click **Next**
- ___ 31. This action copies a new JVM to the current WebSphere Application server home directory. Click the **Relaunch** button and follow the instructions to install the WebSphere Application Server SDK
- ___ 32. Click **Finish** once the installation is complete

2. Updating WebSphere Portal Server V6.0 with fix pack 6.0.1.1

Prerequisites:-

- Perform the following steps to change the timeout request for the Simple Object Access Protocol (SOAP) client; the default value is 180 seconds:
 - Open a command prompt and change to the **<WP_PROFILE_HOME>/properties** directory
 - Edit the `soap.client.props` file; change the timeout request line to `com.ibm.SOAP.requestTimeout=6000`
 - Save your changes
- Perform the following steps to change the HTTP connection timeout value for the **WebSphere_Portal** server:
 - Click **Servers → Application Servers → WebSphere_Portal → Web container settings → Web container transport chains → WCInboundDefault**
 - Increase the timeout values for each entry listed in the Web container transport chains section. Click **HTTP Inbound Channel** and make the following changes:
 - Read timeout value to 180
 - Write timeout value to 180
 - Save your changes

___ 1. Stop the WebSphere Application Server and the Portal Server

Note: Portal Update Installer wizard reads the **PortalAdminPwd** and **WasPassword** variables in the **wpconfig.properties** located in **<PORTAL_HOME>\config** directory. Edit the file and update the Portal Administrative user password and the WebSphere Application Server Administrative user password

___ 2. Obtain the WebSphere Portal Server V6.0 Fix Pack 6.0.1.1 and the Portal update installer

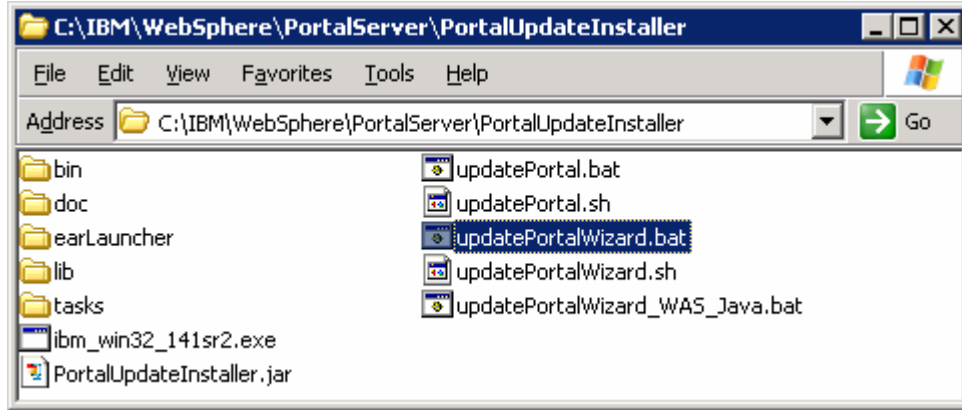
- ___ a. PortalUpdateInstallerWIN.zip (Portal Update Installer)
- ___ b. WP_PTF_6011.jar (WebSphere Portal Server cumulative fix pack)

___ 3. Create a directory named **PortalUpdateInstaller** under the **<PORTAL_HOME>** directory. The **<PORTAL_HOME>** is the path of the WebSphere Portal Server

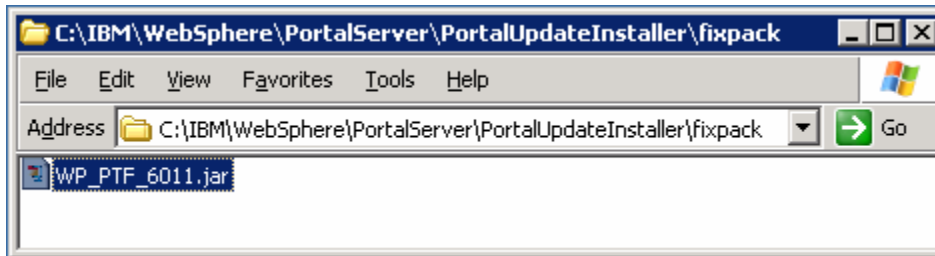
- **<PORTAL_HOME>** : C:\IBM\WebSphere\PortalServer

___ 4. Unpack **PortalUpdateInstallerWIN.zip** file into the **<PORTAL_HOME>\PortalUpdateInstaller** folder. . The unpacked **PortalUpdateInstallerWIN.zip** file to the **PortalUpdateInstaller** should look like the picture shown below:

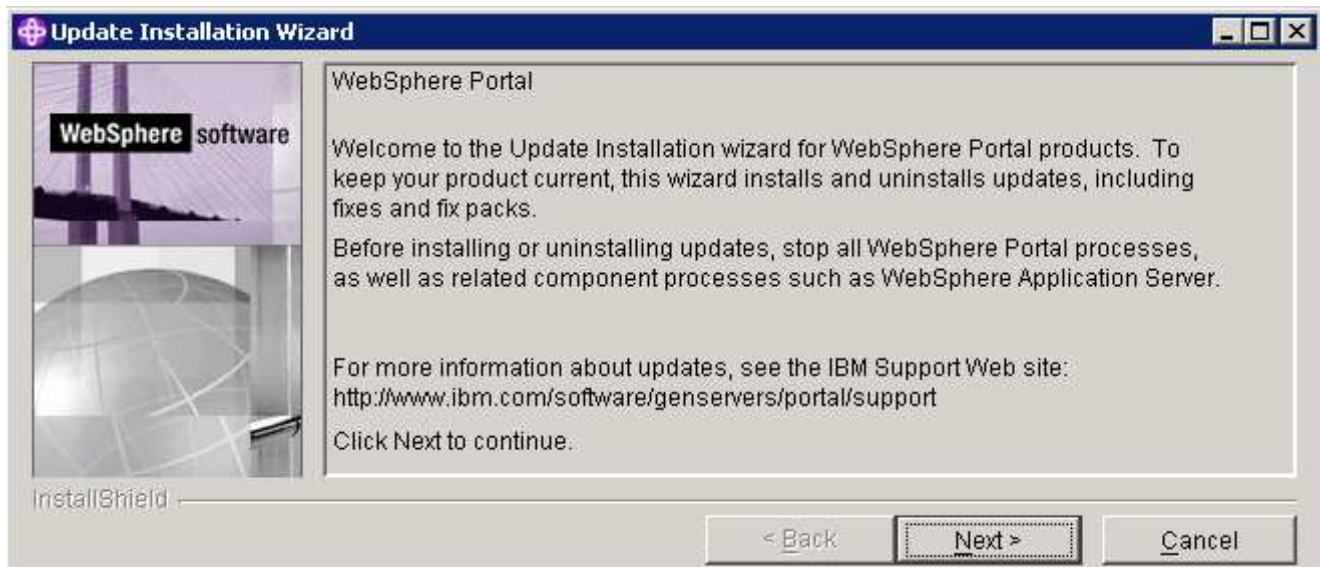
IBM WEBSHERE BUSINESS MONITOR 6.1 – LAB EXERCISE



- ___ 5. Create a directory named **fixpack** in the **PortalUpdateInstaller** directory and copy the WP_PTF_6011.jar into it as shown below:

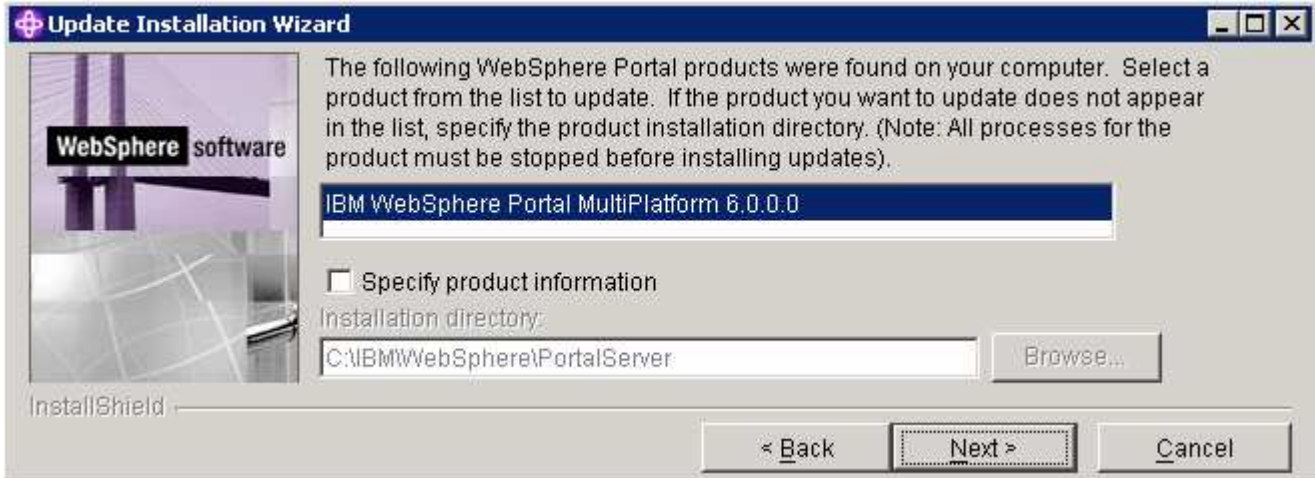


- ___ 6. Open a command line window and change directory to **<WAS602_HOME>\bin** directory. Run the **setupCmdLine.bat** command
- ___ 7. Navigate to the **<PORTAL_HOME>\PortalUpdateInstaller** and double click the **updatePortalWizard.bat** script to launch the WebSphere Portal Server update installer wizard
- ___ 8. Select the language as **English** or the language you want from the drop down list
- ___ 9. Click **OK**. The WebSphere Portal Server Update Installer Wizard opens
- ___ 10. Read the instructions carefully in the **Welcome** screen



IBM WEBSHERE BUSINESS MONITOR 6.1 – LAB EXERCISE

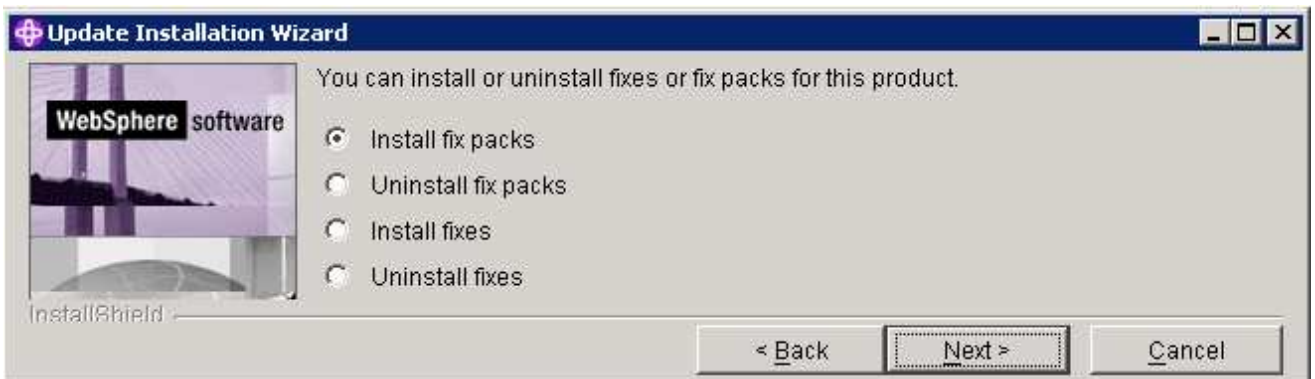
- ___ 11. Click **Next**
- ___ 12. The Portal Update Installer wizard detects the WebSphere Portal Server instances installed on the machine and lists them. Select the desired Portal installation you like to upgrade in the following panel



- ___ 13. Click **Next**
- ___ 14. The Portal Update Installer wizard checks the status of the WebSphere Application Server and the WebSphere Portal Server



- ___ 15. In the following panel, select the radio button for '**Install fix packs**'

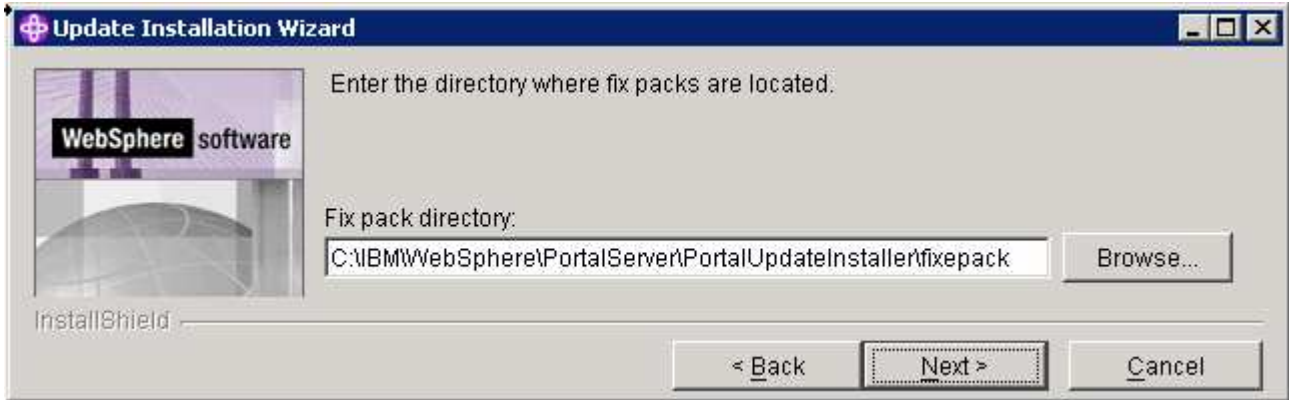


IBM WEBSHERE BUSINESS MONITOR 6.1 – LAB EXERCISE

___ 16. Click **Next**

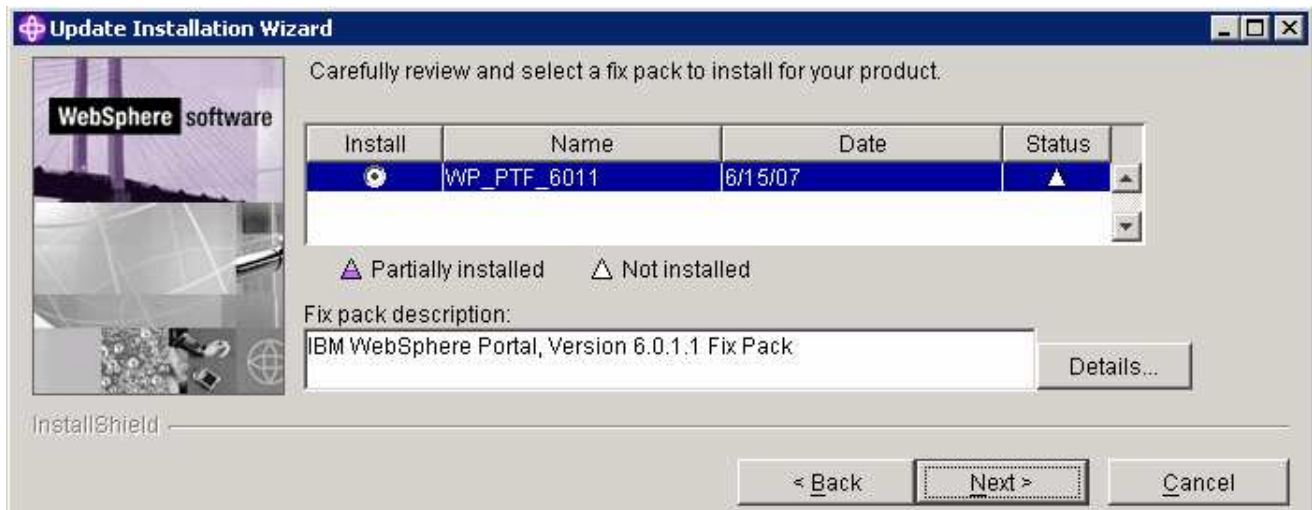
___ 17. In the following panel, click the **Browse** button and navigate to the **fixpack** directory to locate the file

___ a. Fix pack directory : <PORTAL_HOME>\PortalUpdateInstaller\fixpack



___ 18. Click **Next**

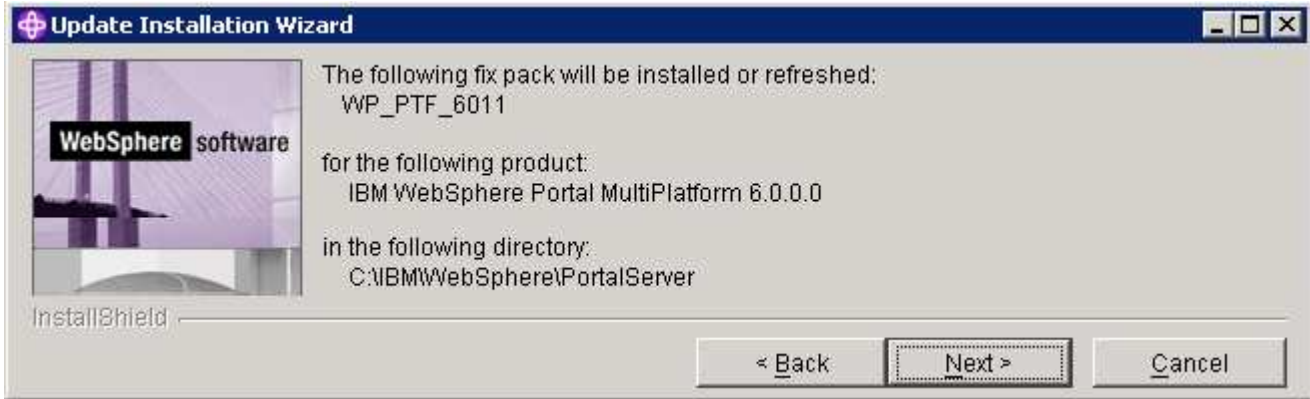
___ 19. In the following panel, the Portal Update Installer lists the fix packs loaded from the **fixpack** directory. Select the radio button next to **WP_PTF_601**



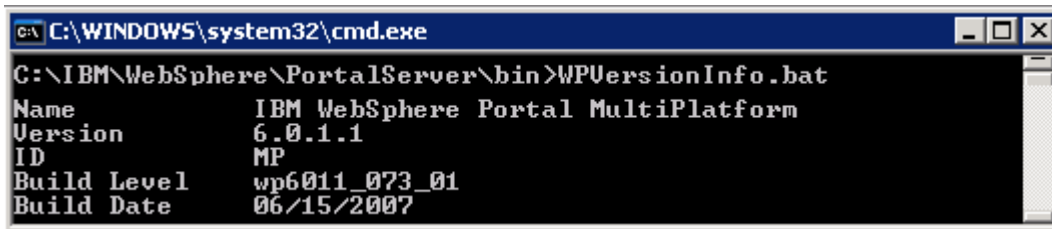
___ 20. Click **Next**

___ 21. In the following panel, review the Portal fix pack installation summary

IBM WEBSHERE BUSINESS MONITOR 6.1 – LAB EXERCISE



- ___ 22. Click **Next**
- ___ 23. The Portal fix pack installation progresses and takes a few minutes to complete
- ___ 24. Click **Finish** when the installation is complete
- ___ 25. Verify the version of the Portal Server installation
 - ___ a. Open a command window and change directory to **<PORTAL_HOME>\bin** and run the following command:
 - **WPVersionInfo.bat**



Appendix 1: Troubleshooting

Troubleshooting the monitor deployment manager installation (Machine 1)

___ 1. Useful files for debugging initial installation problems:

__ a. Location : C:\Documents and Settings\Administrator\Local Settings\Temp\1
(%TEMP% directory of the Administrator user)

__ b. Location : <WAS61_HOME>\logs\wbm\install

- log.txt
- trace.txt
- wbm_<TIME STAMP>_install_out.log
- wbm_<TIME STAMP>_install_trace.log

__ c. Location : <WAS61_HOME>\logs\wbm

- Installconfig.log

___ 2. Useful files for debugging monitor deployment manager installation problems

__ a. <DMGR_PROFILE_HOME>\logs

- wsadmin.traceout
- installWBMISCPortlet.log
- installVmmService.log
- InstallDMSService.log
- InstallActionManager.log
- MonitorServerResourceInstall.log
- createWBMTemplate.log

__ b. <DMGR_PROFILE_HOME>\logs\dmgr

- SystemOut.log
- SystemErr.log

Troubleshooting the monitor federated server installation (Machine 2)

___ 1. Useful files for debugging initial installation problems:

__ a. Location : C:\Documents and Settings\Administrator\Local Settings\Temp\1
(%TEMP% directory of the Administrator user)

IBM WEBSPHERE BUSINESS MONITOR 6.1 – LAB EXERCISE

__ b. Location : <WAS61_HOME>\logs\wbm\install

- log.txt
- trace.txt
- wbm_<TIME STAMP>_install_out.log
- wbm_<TIME STAMP>_install_trace.log

__ c. Location : <WAS61_HOME>\logs\wbm\install

- Installconfig.log

___ 2. Useful files for debugging monitor federated node installation problems:

__ a. <WBM_PROFILE_HOME>\logs

- wsadmin.traceout
- addNode.log
- addDefaultWBMVar.log
- createCEIServer.log
- configCEI.log
- createCEIResources.log
- configSIB.log

__ b. <WBM_PROFILE_HOME>\logs\nodeagent

- SystemOut.log
- SystemErr.log

__ c. <WBM_PROFILE_HOME>\logs\wbmServer

- SystemOut.log
- SystemErr.log

Troubleshooting the Portlet-based dashboards installation (Machine 3)

___ 1. Useful files for debugging initial installation problems:

__ a. Location : C:\Documents and Settings\Administrator\Local Settings\Temp\1
(%TEMP% directory of the Administrator user)

__ b. Location : <PORTAL_HOME>\logs\wbm\install

- log.txt
- trace.txt

IBM WEBSHERE BUSINESS MONITOR 6.1 – LAB EXERCISE

- wbm_<TIME STAMP>_install_out.log
- wbm_<TIME STAMP>_install_trace.log

a) Useful files for portlet-based dashboard installation problems:

___ a. <WP_PROFILE_HOME>\logs

- wsadmin.traceout
- installPortalDashboardRestProxy.log
- installHumanTask.log
- installABXPortalDashboard.log

b) Useful files for Portal Server installation and runtime problems:

___ a. <PORTAL_HOME>\log

- SystemOut.log
- SystemErr.log