



IBM Software Group

WebSphere Business Monitor V6.2

Monitor model editor



@business on demand.

© 2009 IBM Corporation
Updated March 2, 2009

This presentation should introduce you to the new features for the monitor model editor in version 6.2 of WebSphere® Business Monitor.

Agenda

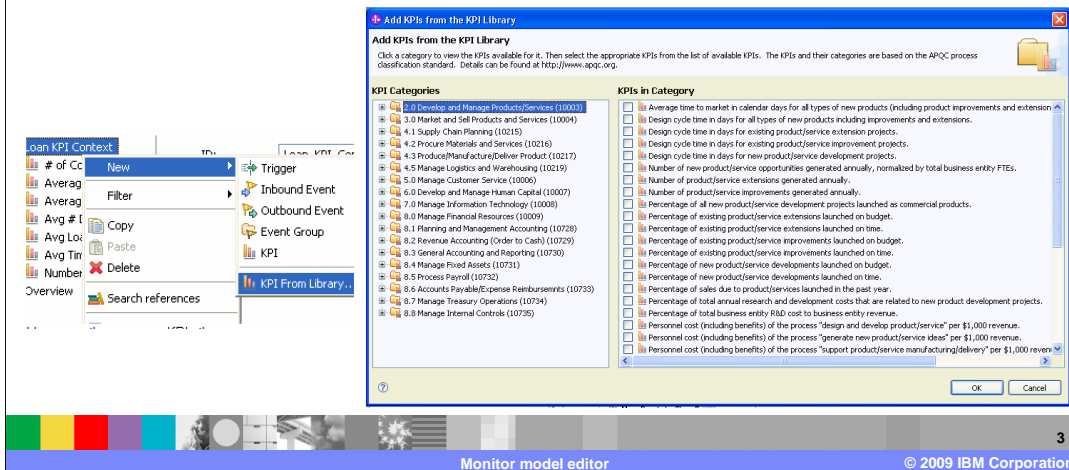
- KPI libraries
- Standard deviation
- Quality of service
- KPI formatting
- Supporting older versions of WebSphere Process Server



This is the agenda for this presentation. You will see several topics including KPI libraries, support for the standard deviation function, new quality of service attributes, KPI formatting, and support for older versions of process server.

KPI libraries

- A comprehensive list of commonly used industry-specific KPIs from American Productivity and Quality Center (APQC)
- For more information, see <http://www.apqc.org/>

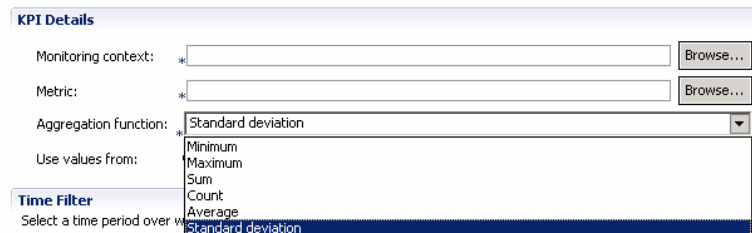
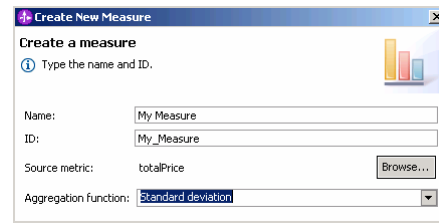


The KPI library is provided by the American Productivity and Quality Center (APQC). It is a comprehensive list of commonly used KPIs which are listed in industry specific categories. You can use this library to see a list of KPIs for your industry and choose the ones that are appropriate for your business. When you select a KPI, you are provided the name and description, so you still need to identify the source of the KPI from metrics in your monitor model.

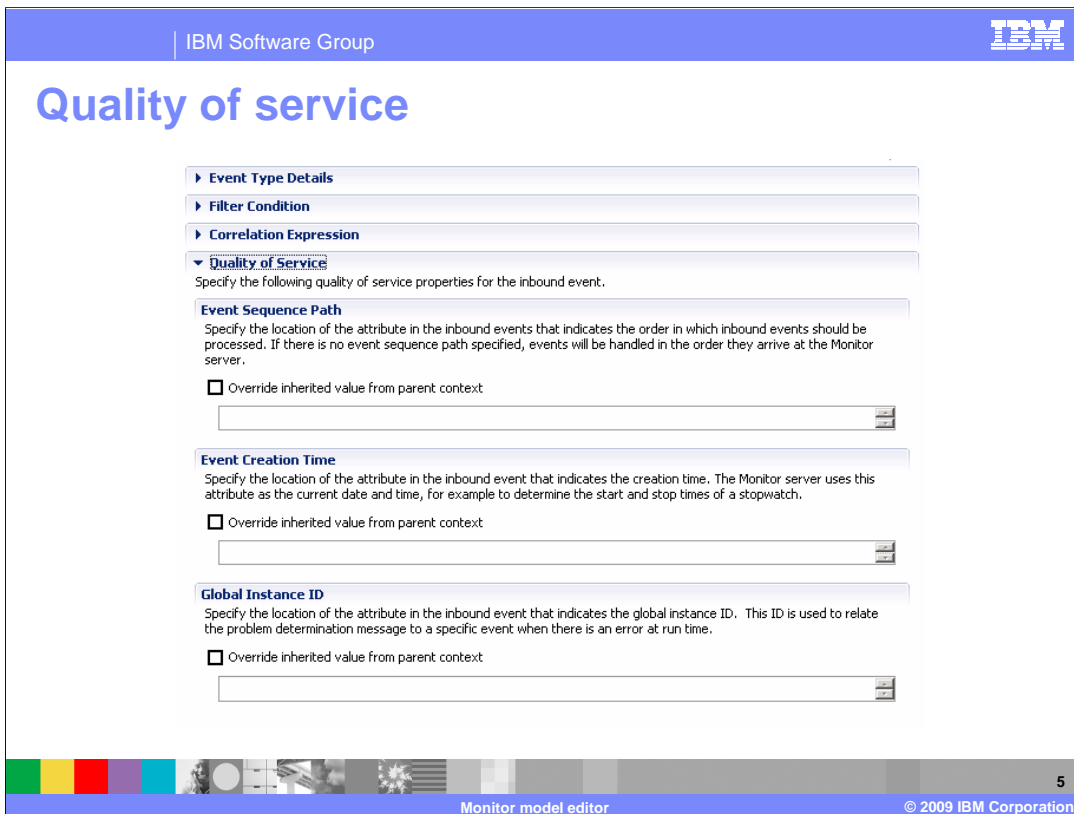
IBM consultants can use a benchmark wizard to quickly seed a monitor model with relevant, proven KPIs along with actual values for KPI targets and ranges based on a database of real-world data.

Standard deviation

- Standard deviation is a measurement of the variation in a set of values
- Creating a measure or KPI
- Displayed in dashboard in KPI, dimension, report widgets



There is a new standard deviation function which you can use when defining a measure or KPI in the monitor model. Standard deviation is a measurement of the variation in a set of values. Just like the other aggregation functions, you will see the results of the standard deviation function in the appropriate dashboard widgets, such as KPIs, dimensions and reports.



There is new support for you to specify the location in the event data of key quality of service information which was previously specified in the common base event wrapper. You can specify event sequence path, creation time path, and global instance ID path.

These paths can be set for the monitoring context or KPI context so then they will apply to all inbound events for the context. You can also set the paths for a specific inbound event which means it will override the definition for the context. This information is optional so the monitor server runtime provides appropriate default behavior.

You can specify an event sequence path, which is a path to an event attribute that indicates the processing order for inbound events. If no event sequence path is defined, events are processed in the order they arrive.

You can specify creation time path. The creation time is used for stopwatches and for any date or time functions used in expressions.

You can specify the path to the global instance ID. This ID is used to relate the problem determination message to a specific event when there is an error at run time. By default, the value used at run time is the path to the common base event global instance ID, which is an automatically generated identifier to uniquely identify the event.

IBM Software Group IBM

KPI formatting

KPI Details
 Edit the details of the KPI, which is a performance measurement used to track business objectives.

ID:

Name:

Description:

Type:

Currency: Decimal Precision: Show As Percentage

Keep track of historical values for this KPI

KPI Target and Ranges
 Specify a target, which is an exact value for the KPI to achieve, or ranges against which to track the KPI, or both.

Target:

Ranges:

Range name	Start value	End value	Color
My Range	0	< 5	#ffff90
My Range 1	5	< 16	#00ff00
My Range 2	16	< 16	#000080

Default range colors to shades of blue

Color selection dialog:

Basic colors:

Custom colors:

Define Custom Colors >>

OK Cancel

Only visible when type is decimal

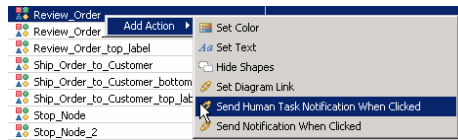
Monitor model editor 6 © 2009 IBM Corporation

In the monitor model you can specify simple KPI formatting for currency, decimal precision, percentage and range colors. Then you can immediately view formatted KPIs on the dashboard without having to use KPI Manager to format them every time the monitor model is deployed.

The currency, precision and percentage options are only visible when the KPI type is decimal.

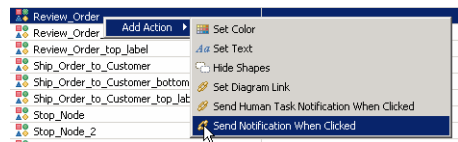
You can set the color of each range on the KPI, but if you take the defaults then you will see colors which are shades of blue.

Notification in the visual model



- Interacts with human tasks widget or my team's tasks widget

Review_Order	
Send Human Task Notification When Clicked	
condition	X+Y =?
human task instance ID	X+Y "
human task name	X+Y "OrderHandling_ReviewOrder"
human task namespace	X+Y "http://CATOrderMgmt/Processes/OrderHandling/ReviewOrder"




- Interacts with custom widget
- Refer to the business space information center

Review_Order	
Send Notification When Clicked	
condition	X+Y =?
event code	X+Y =? "ReviewOrderEvent"




In the visual model you can setup notification so that when a shape is clicked in the diagram widget, then a cooperative link is invoked to other widgets in the dashboard. This works with the human tasks widget or the my team's tasks widget. In the dashboard you need to setup cooperative links between the diagram widget and the human task widgets. In the visual model, you specify the human task instance ID, name and namespace. If you import a monitor model and process model from WebSphere Business Modeler, the human task name and namespace are not automatically filled in for you. But you can get this information from the human task properties in the BPEL diagram.

In this release you can create a custom widget. You can send information to the custom widget when you click the diagram, by using the visual action 'Send notification when clicked'. You can optionally specify a condition. The event code is any arbitrary string, but you also specify this event code in the custom widget when you create the widget. In the widget you also specify any metrics for the monitoring context that you want to send to the widget. For more information on creating and using custom widgets, refer to the business space information center.

IBM Software Group 

Supporting older versions of process server

- If you have an old version of process server without monitor server then how do you enable monitoring on those processes?
- In previous releases, you install the old toolkit, then you create and export the monitor model from the old toolkit . Then you import the monitor model to the new toolkit.
- A new utility will allow you to export the monitor application descriptor from the old system, and import that into the new toolkit
 - ▶ Install the feature into the old WebSphere Integration Developer
 - ▶ Export application monitoring information on the module
 - ▶ Import the information file to 6.2 toolkit which starts the monitor model creation wizard for selection of monitoring elements
- This supports Websphere Process Server V6.0.2 and V6.1.x
- Toolkit information center topic
 - ▶ Generating monitor models > Generating from pre-6.2 applications



Monitor model editor 8 © 2009 IBM Corporation

If you have an old version of process server without the same version of WebSphere Business Monitor installed, then how do you enable monitoring on those processes?

In previous releases, you license and install the old monitor toolkit, then you create and export the monitor model from the old toolkit . Then you import the monitor model to the new toolkit.

In this release you install a plug-in into WebSphere Integration Developer and export the monitor application descriptor for your process. Then you import it to the new monitor toolkit which starts the monitor model creation wizard for selection of the monitor elements.

You can use this new feature for WebSphere Process Server version 6.0.2 and 6.1.x. For more information there is a topic in the information center in the section for generating monitor models.

Feedback

Your feedback is valuable

You can help improve the quality of IBM Education Assistant content to better meet your needs by providing feedback.

- Did you find this module useful?
- Did it help you solve a problem or answer a question?
- Do you have suggestions for improvements?

Click to send e-mail feedback:

mailto:iea@us.ibm.com?subject=Feedback_about_WBMonitorV62_MME.ppt

This module is also available in PDF format at: ..\\WBMonitorV62_MME.pdf



You can help improve the quality of IBM Education Assistant content by providing feedback.

Trademarks, copyrights, and disclaimers

IBM, the IBM logo, ibm.com, and the following terms are trademarks or registered trademarks of International Business Machines Corporation in the United States, other countries, or both:

WebSphere

If these and other IBM trademarked terms are marked on their first occurrence in this information with a trademark symbol (® or ™), these symbols indicate U.S. registered or common law trademarks owned by IBM at the time this information was published. Such trademarks may also be registered or common law trademarks in other countries. A current list of other IBM trademarks is available on the Web at "Copyright and trademark information" at <http://www.ibm.com/legal/copytrade.shtml>

Other company, product, or service names may be trademarks or service marks of others.

Product data has been reviewed for accuracy as of the date of initial publication. Product data is subject to change without notice. This document could include technical inaccuracies or typographical errors. IBM may make improvements or changes in the products or programs described herein at any time without notice. Any statements regarding IBM's future direction and intent are subject to change or withdrawal without notice, and represent goals and objectives only. References in this document to IBM products, programs, or services does not imply that IBM intends to make such products, programs or services available in all countries in which IBM operates or does business. Any reference to an IBM Program Product in this document is not intended to state or imply that only that program product may be used. Any functionally equivalent program, that does not infringe IBM's intellectual property rights, may be used instead.

THE INFORMATION PROVIDED IN THIS DOCUMENT IS DISTRIBUTED "AS IS" WITHOUT ANY WARRANTY, EITHER EXPRESS OR IMPLIED. IBM EXPRESSLY DISCLAIMS ANY WARRANTIES OF MERCHANTABILITY, FITNESS FOR A PARTICULAR PURPOSE OR NON-INFRINGEMENT. IBM shall have no responsibility to update this information. IBM products are warranted, if at all, according to the terms and conditions of the agreements (for example, IBM Customer Agreement, Statement of Limited Warranty, International Program License Agreement, etc.) under which they are provided. Information concerning non-IBM products was obtained from the suppliers of those products, their published announcements or other publicly available sources. IBM has not tested those products in connection with this publication and cannot confirm the accuracy of performance, compatibility or any other claims related to non-IBM products.

IBM makes no representations or warranties, express or implied, regarding non-IBM products and services.

The provision of the information contained herein is not intended to, and does not, grant any right or license under any IBM patents or copyrights. Inquiries regarding patent or copyright licenses should be made, in writing, to:

IBM Director of Licensing
IBM Corporation
North Castle Drive
Armonk, NY 10504-1785
U.S.A.

Performance is based on measurements and projections using standard IBM benchmarks in a controlled environment. All customer examples described are presented as illustrations of how those customers have used IBM products and the results they may have achieved. The actual throughput or performance that any user will experience will vary depending upon considerations such as the amount of multiprogramming in the user's job stream, the I/O configuration, the storage configuration, and the workload processed. Therefore, no assurance can be given that an individual user will achieve throughput or performance improvements equivalent to the ratios stated here.

© Copyright International Business Machines Corporation 2009. All rights reserved.

Note to U.S. Government Users - Documentation related to restricted rights-Use, duplication or disclosure is subject to restrictions set forth in GSA ADP Schedule Contract and IBM Corp.

