



IBM Software Group

WebSphere® Integration Developer V6.0.1

WebSphere Integration Developer Installation



@business on demand.

© 2006 IBM Corporation
Updated February 1, 2006

This presentation will provide an overview of WebSphere Integration Developer V6.0.1 installation.

Goals

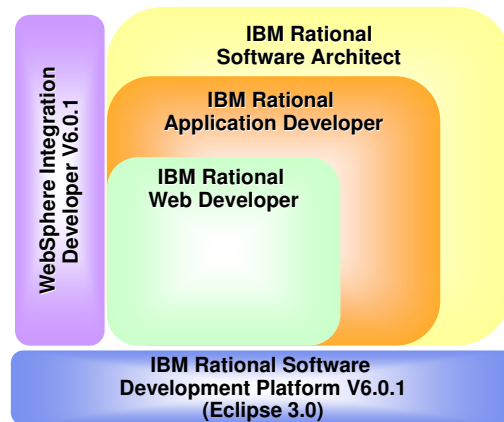
- Describe WebSphere Integration Developer V6.0.1 installation
- Provide tips for troubleshooting a failed installation
- Describe the uninstall process



The goals of this presentation are to describe the installation process for WebSphere Integration Developer V6.0.1 and to provide some tips for troubleshooting a failed installation. A brief description of the uninstall process will also be included.

Installation: Architecture

- Rational® Software Development Platform provides the basis for WebSphere Integration Developer V6.0.1
 - ▶ Composed of Eclipse 3.0 and other components
- Rational Software Development Platform is installed once per system
 - ▶ Only plug-ins for the new product are installed



As with several other IBM software products, the IBM Rational Software Development Platform V6.0.1 provides the basis for WebSphere Integration Developer V6.0.1. This platform is built upon Eclipse 3.0 technology. The important thing to be aware of with the Rational Software Development Platform is that it is installed once per system. As other products built upon this platform are installed, only the plug-ins needed by the new product are installed. There can be compatibility issues between products if they require differing levels of Rational Software Development Platform. The WebSphere Integration Developer installation guide provides a chart explaining the relationship between the various Rational Software Development Platform based products and version compatibility.

Installation: Migration and Co-existence

- WebSphere Studio Application Developer Integration Edition V4 or V5.0
 - ▶ No migration support available
 - ▶ Can co-exist with WebSphere Integration Developer V6.0.1
- WebSphere Studio Application Developer Integration Edition V5.1.1
 - ▶ Source artifact migration available
 - ▶ Can co-exist with WebSphere Integration Developer V6.0.1
- WebSphere Integration Developer V6.0
 - ▶ Cannot co-exist – V6.0 must be upgraded to V6.0.1
 - ▶ IBM Rational Product Updater used to perform the upgrade
- Other Rational Software Development Platform-based products
 - ▶ See Installation guide for complete list



Shown here is a summary of the migration and co-existence information for WebSphere Integration Developer V6.0.1 with respect to related IBM products. Customers moving from WebSphere Studio Application Developer Integration Edition to WebSphere Integration Developer V6.0.1 need to be aware of the version numbers of WebSphere Studio Application Developer Integration Edition for migration support. For versions of WebSphere Studio Application Developer Integration Edition prior to V5.1.1, there is no migration support available. However, source artifact migration is available for WebSphere Studio Application Developer Integration Edition V5.1.1.

WebSphere Integration Developer V6.0.1 can co-exist with previous versions of WebSphere Studio Application Developer Integration Edition.

Co-existence between WebSphere Integration Developer V6.0 and WebSphere Integration Developer V6.0.1 is not supported. The existing V6.0 installation must be upgraded to V6.0.1 using the IBM Rational Product Updater which can be accessed from within WebSphere Integration Developer V6.0.

For more information on co-existence with other Rational Software Development Platform-based products, see the WebSphere Integration Developer V6.0.1 installation guide.

Installation: Hardware Requirements

Hardware	Requirement
Processor	<ul style="list-style-type: none">▪ Intel® Pentium® III 1GHz processor (minimum)▪ Higher is recommended
Memory	<ul style="list-style-type: none">▪ 1 GB RAM (minimum)▪ 2 GB RAM is recommended
Disk Space	<ul style="list-style-type: none">▪ Full WebSphere Integration Developer V6.0.1 install requires 5.5 GB disk space▪ 1 GB TEMP disk space is needed during installation
Display	<ul style="list-style-type: none">▪ 1024x768 (minimum)▪ 1280x1024 or greater is recommended

The information on this slide summarizes hardware requirements for a WebSphere Integration Developer V6.0.1 installation. A complete discussion of these requirements can be found in the product installation guide.

Installation: Supported Operating Systems

- Windows™ 2000 Advanced Server with SP3 and SP4
- Windows 2000 Server with SP3 and SP4
- Windows 2000 Professional with SP3 and SP4
- Windows Server 2003 Enterprise Edition
- Windows Server 2003 Standard Edition
- Windows XP Professional with SP1 and SP2
- Red Hat Enterprise Linux® 3.0 WS Update 2
- SuSe Linux Enterprise Server 9



This slide summarizes the supported operating systems for a WebSphere Integration Developer V6.0.1 installation. This information can also be found in the product installation guide.

Installation: Hints and Other Information

- Before installing WebSphere Integration Developer V6.0.1
 - ▶ Verify you are logged on as a user with administrative privileges
 - ▶ Verify there is 1 GB of available TEMP space in addition to the 5.5 GB needed for the installation
 - ▶ Verify other shell sharing products are at the appropriate levels
- Installation time can be quite long
 - ▶ Many factors influence the exact amount of time needed to install
 - ▶ A full installation may run from 1½ hours to 2½ hours
 - WebSphere Integration Developer installation
 - WebSphere Process Server V6.0.1 installation and profile creation
 - WebSphere Enterprise Service Bus V6.0.1 profile creation
- Sources of information
 - ▶ <IMAGE_DIR>\disk1\readme.html
 - ▶ <IMAGE_DIR>\disk1\install.html
 - ▶ <IMAGE_DIR>\disk1\migration.html


Also available
from launchpad



Before installing WebSphere Integration Developer V6.0.1 there are several things you should verify to ensure that the installation process can proceed. First, make sure you are logged onto the system as a user that has administrative privileges before starting the installation process. Also, make sure that in addition to the 5.5 GB of disk space needed for the installation that there is at least 1GB of TEMP disk space available for use during the installation process. If you are installing WebSphere Integration Developer V6.0.1 on a system that has other Rational Software Development Platform-based products installed, it is important to verify that these products are at the appropriate levels. If they are not, during the installation process, you may be informed that the installation cannot proceed until these products are at the appropriate level. The IBM Rational Product Updater can be used with these products to bring them to the correct levels.


Be aware that the installation of WebSphere Integration Developer V6.0.1 can take a considerable amount of time. A complete installation of the WebSphere Integration Developer with both WebSphere Process Server and WebSphere Enterprise Service Bus unit test environments installed can take anywhere from one and one half hours to two and one half hours.

If you would like to learn more about installation and migration considerations with WebSphere Integration Developer V6.0.1 before installing the product, refer to the sources of information included on disk 1 of the installation media which are detailed on this slide.

IBM Software Group 

Installation: Wizard

- Run launch pad
 - ▶ <IMAGE_DIR>\disk1\launchpad.exe Windows
 - ▶ <IMAGE_DIR>/disk1/launchpad.bin Linux
- Select Install IBM WebSphere Integration Developer V6.0.1
- Installation Steps
 - ▶ Read/Accept license agreement
 - ▶ Specify install location
 - ▶ Select WebSphere Integration Developer features
 - WebSphere Process Server V6.0.1 Test Environment
 - WebSphere Enterprise Service Bus V6.0.1 Test Environment



WebSphere Integration Developer Installation
8 © 2006 IBM Corporation

WebSphere Integration Developer V6.0.1 includes an installation wizard to guide developers through the installation process. A common way to start the installation wizard is using the launchpad that is found on disk 1 of the installation media. On the launchpad you will see an option to install WebSphere Integration Developer V6.0.1 along with links to the readme, installation, and migration guides.

The installation wizard for WebSphere Integration Developer V6.0.1 guides you through 3 primary installation steps. First, you are asked to review and accept the license agreement. Next, you have the opportunity to specify the installation location or accept the default. Finally, you have the option to install the WebSphere Process Server V6.0.1 unit test environment silently as part of the WebSphere Integration Developer V6.0.1 installation process. The unit test environment can be either WebSphere Process Server V6.0.1 or WebSphere Enterprise Service Bus V6.0.1 or both.

Linked on this slide is a show me demonstration that illustrates the WebSphere Integration Developer V6.0.1 installation process. To watch this demonstration click on the Show Me icon.

Installation: Command Line

- Location of setup.exe

- ▶ <IMAGE_DIR>\disk1\setup\setup.exe Windows

- ▶ <IMAGE_DIR>/disk1/setup/setup.bin Linux

- Examples

Options	Description
setup.exe -console	Interactive command line installation
setup.exe -silent	Silent install with Default install (features and location)
setup.exe -silent -P installLocation="C:\WID_INSTALL_DIR"	Silent install with install location specified
setup.exe -silent -options "<DIR>\responseFile.txt"	Silent install with options in response file. Response file options include: <ul style="list-style-type: none"> ▪installLocation ▪feature_wps6_win32.active

In addition to the installation wizard, there is also a command line utility available to install WebSphere Integration Developer V6.0.1. The command line utility (setup.exe) is found on disk 1 under the setup directory of the installation media. This slide also lists several common options available with this command line utility. For more information on this utility and the available options, see the WebSphere Integration Developer V6.0.1 installation guide.

Installation: Process Details

Step	Description	Comments
1	<ul style="list-style-type: none"> Write WebSphere Integration Developer V6.0.1 product files 	<ul style="list-style-type: none"> Failures are uncommon during this step
2	<ul style="list-style-type: none"> Write Rational Software Development Platform V6.0 Run updater to bring to V6.0.1 level 	<ul style="list-style-type: none"> Failures during this step are typically the result of inadequate TEMP disk space
3	<ul style="list-style-type: none"> WebSphere Process Server V6.0.1 installed WebSphere Process Server V6.0.1 profile creation WebSphere Enterprise Service Bus V6.0.1 profile creation 	<ul style="list-style-type: none"> See troubleshooting WebSphere Process Server V6.0.1 installation for more information on failures during this step
4	<ul style="list-style-type: none"> Compiles Eclipse plug-in cache data 	<ul style="list-style-type: none"> Failures are uncommon during this step



There are four basic steps to the WebSphere Integration Developer V6.0 installation process. These steps are summarized on this slide along with some comments on types of failures that can occur during each phase.

In the first step, the WebSphere Integration Developer V6.0.1 installer writes the product files.

Next in the installation process the Rational Software Development Platform V6.0 files are added and the updater is used to bring these files to the V6.0.1 level.

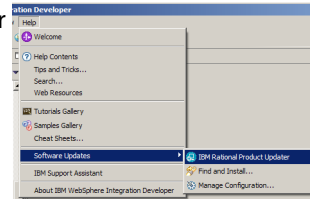
If you selected to install the unit test environment, this feature is installed silently during the third phase of the installation process. First the product is installed and then the profiles are created. The WebSphere Process Server V6.0.1 and the WebSphere Enterprise Service Bus V6.0.1 share the installation files and each has its own profile defining its configuration.

Finally, as the last step in the installation process, the eclipse plug-in cache data is compiled.

When the installation process is complete, you will see a summary page that identifies the status of each phase in the installation process. If there are any failures reported on the summary page, take note of the step that failed and refer to the installation logs for more information on the error.

Installation Upgrade From V6.0 to V6.0.1

- IBM Rational Product Updater
 - ▶ Used to upgrade a WebSphere Integration Developer V6.0 installation to V6.0.1
 - ▶ Launched directly from WebSphere Integration Developer V6.0
 - Help->Software Updates->IBM Rational Product Updater
- The update process will update:
 - ▶ WebSphere Integration Developer
 - ▶ Rational Software Development Platform
 - ▶ WebSphere Process Server
- WebSphere Enterprise Service Bus
 - ▶ Was not included in V6.0
 - ▶ The update process can optionally create a WebSphere Enterprise Service Bus profile.



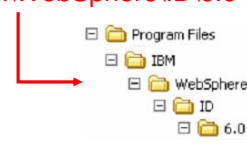
When WebSphere Integration Developer V6.0 is already installed it is an easy process to upgrade the installation to V6.0.1. This is done using the IBM Rational Product Updater which can be launched from the WebSphere Integration Developer V6.0 using the menu Help, Software Updates, IBM Rational Product Updater. The interface will provide you with information about the products that are installed and what levels they are at. It can then search to find if there are required updates to be installed. Along with upgrading WebSphere Integration Developer it will also upgrade the Rational Software Development Platform and the WebSphere Process Server unit test environment. Although the WebSphere Enterprise Service Bus was not part WebSphere Integration Developer V6.0 the upgrade process can optionally create a WebSphere Enterprise Service Bus V6.0.1 profile.

IBM Software Group IBM

Installation: File System Layout (Example)

- [-] wid
 - [+] bin — Web Service command line tools
 - [+] csdev
 - [+] csdevrpt_shared
 - [+] eclipse — Eclipse 3.0 files
 - [+] logs — Installation and licensing log files
 - [+] pf
 - [+] esb — Default WebSphere Enterprise Service Bus profile
 - [+] wps — Default WebSphere Process Server profile
 - [+] rad — Rational Application Developer files
 - [+] radrsm_shared
 - [+] Resource Adapters — CICS® and IMS RAR files from the J2C iFeature
 - [+] runtimes — Test runtime environments
 - [+] base_v5_stub
 - [+] base_v6_stub
 - [+] base_v51_stub
 - [+] bi_v6 — WebSphere Process Server & WebSphere Enterprise Service Bus installation
 - [+] bi_v6_stub
 - [+] express_v5_stub
 - [+] express_v51_stub
 - [+] temp
 - [+] rwd — Rational Web Developer files
 - [+] rwdrpt_shared
 - [+] sdpisv
 - [+] setup — License information
 - [+] updater — Rational Product Updater
 - [+] wid_prod — WebSphere Integration Developer files
 - [+] wstools — WebSphere Integration Developer plug-ins

Install location is recommended to be in as short a directory path as possible (e.g. C:\wid). However, the default location is C:\Program Files\IBM\WebSphere\ID\6.0



WebSphere Integration Developer Installation 12 © 2006 IBM Corporation

This slide shows the directory structure of a WebSphere Integration Developer V6.0.1 installation.

Notice that although the default installation path is c:\Program Files\IBM\WebSphere\ID\6.0 this slide illustrates the installation directory as being c:\wid. This is because there can be issues with Windows operation systems when path lengths become more than 256 characters and therefore installing the WebSphere Integration Developer into a directory with a very short fully qualified path name decreases the possibility of the path length limitation becoming a problem.

The next thing to notice is that the profiles for WebSphere Enterprise Service Bus and WebSphere Process Server are located at <INSTALL_DIR>/pf/esb and <INSTALL_DIR>/pf/wps. This is a change from WebSphere Integration Developer V6.0 where the profiles were contained in the <INSTALL_DIR>/prof directory.

Lastly notice that the binaries for both the WebSphere Process Server and WebSphere Enterprise Service Bus share a common directory at <INSTALL_DIR>/runtimes/bi_v6.

Installation: Product Configuration

- Registry updated in Windows
 - ▶ All registry entries are found under the key:
 - HKEY_LOCAL_MACHINE\SOFTWARE\IBM\WebSphere Integration Developer
- Entries beginning with wid_xxx added to
 - ▶ **Windows 2000** – C:\WINNT\vpd.properties
 - ▶ **Windows XP / 2003** – C:\WINDOWS\vpd.properties
 - ▶ **Linux** – /root/vpd.properties
- Entries added to RAT60 properties
 - ▶ **Windows 2000** – C:\WINNT\IBM\RAT60\.sdpinst\cdi_ref.properties
 - ▶ **Windows XP/2003** – C:\WINDOWS\IBM\RAT60\.sdpinst\cdi_ref.properties
 - ▶ **Linux** – /etc/RAT60/.sdpinst/cdi_ref.properties

During the WebSphere Integration Developer V6.0.1 installation there are some product configuration steps that occur. This slide summarizes this configuration. To begin with, the Windows registry is updated with several entries contained below the key shown in the slide. In addition to the updates to the Windows registry there are also two properties files that are updated. First, the vpd.properties file is updated to include several key WebSphere Integration Developer specific property values. These properties begin with “wid_”. Configuration updates are also made to the RAT60 properties file as noted on this slide.

WebSphere Process Server V6.0.1 Environment

- Full WebSphere Process Server V6.0.1 and WebSphere Enterprise Service Bus V6.0.1 are installed
 - ▶ Installed silently
 - ▶ Binaries installed to <INSTALL_DIR>\runtimes\bi_v6 (shared by both)
 - ▶ Default profiles created at:
 - <INSTALL_DIR>\pf\esb
 - <INSTALL_DIR>\pf\wps
 - ▶ Userid /password of wid/wid is created automatically at install time
- Installation log files
 - ▶ <INSTALL_DIR>\logs\wps_v6_install_out.log
 - Check for INSTCONFSUCCESS message at end of file for successful installation
 - ▶ <INSTALL_DIR>\logs\wps_v6_install_err.log
 - ▶ <INSTALL_DIR>\runtimes\bi_v6\logs\log.txt
 - ▶ <INSTALL_DIR>\runtimes\bi_v6\logs\wbi\
 - ▶ <INSTALL_DIR>\runtimes\bi_v6\logs\wsprofile\wasprofile_create_wid.log

If you choose to install the WebSphere Process Server V6.0.1 or the WebSphere Enterprise Service Bus V6.0.1 unit test environment, or both, there are several things that are important to know about the installation of this feature. As mentioned previously, the unit test environment is installed silently as part of the WebSphere Integration Developer installation process and the binaries are installed under <INSTALL_DIR>\runtimes\bi_v6. These are shared between both the WebSphere Process Server and the WebSphere Enterprise Service Bus. The default profiles are created under <INSTALL_DIR>\pf\wps and <INSTALL_DIR>\pf\esb. Also during the installation process, a userid and password combination is created automatically.

If there is a failure during the installation of the WebSphere Process Server or WebSphere Enterprise Service Bus the problem can be diagnosed using the installation logs that are listed on this slide.

Test Environment Product Configuration

- Registry updated in Windows
 - ▶ The updates will be found in the registry below the following keys.
 - ▶ HKEY_LOCAL_MACHINE\SOFTWARE\IBM\WebSphere Application Server
 - ▶ HKEY_LOCAL_MACHINE\SOFTWARE\IBM\WebSphere Application Server Network Deployment
 - ▶ HKEY_LOCAL_MACHINE\SOFTWARE\IBM\WebSphere Process Server
- Entries beginning with WSEAA and WSBAA added to vpd.properties file
 - ▶ **Windows 2000** – C:\WINNT\vpd.properties
 - ▶ **Windows XP / 2003** – C:\WINDOWS\vpd.properties
 - ▶ **Linux** – /root/vpd.properties
- Creates .WASRegistry and .WBIRegistry files in the following location
 - ▶ **Windows** – C:\Document and Settings\%USER_PROFILE%\
 - ▶ **Linux** – /root/

During the WebSphere Process Server V6.0.1 installation there are some product configuration steps that occur. This slide summarizes this product configuration. Updates are made to the Windows registry and can be found under the key specified in the slide. In addition to the updates to the Windows registry, two properties files are also updated. First, the vpd.properties file is updated to include several key WebSphere Process Server and WebSphere Enterprise Service Bus specific property values. These properties begin with WSEAA and WSBEE. Also, two registry files are created called .WASRegistry and .WBIRegistry.

Installation: Troubleshooting

- Identify which step during the installation failed
 - ▶ Final panel of installation wizard provides an install summary
 - ▶ Check install log files
 - WebSphere Integration Developer: <INSTALL_DIR>\logs\
 - WebSphere Process Server
- Uninstall product before attempting another install
- Use the following to enable debugging during installation
 - ▶ `setup.exe -log # !C:\output.txt @ALL`



If you experience a failed WebSphere Integration Developer installation, first identify the installation step where the failure occurred. This information is displayed on the last panel of the installation wizard. Also, refer to the installation logs noted on this slide for more information about the failure. Before attempting another install of the product, make sure you run the uninstall for WebSphere Integration Developer before proceeding. This will clean up any product configuration that has occurred as part of the installation process. Once you have corrected the cause of the installation problem, you can proceed with installing the product again. There is a command line option available that will allow you to turn on debugging during installation. This command is noted at the bottom of this slide.

Uninstall

- Before uninstalling WebSphere Integration Developer
 - ▶ Verify the WebSphere Process Server and WebSphere Enterprise Service Bus are both stopped
 - ▶ Exit WebSphere Integration Developer
 - ▶ Verify you are logged in with administrative privileges
- To uninstall
 - ▶ Run the following command
 - <INSTALL_DIR>\wid_prod_uninst\uninstall.exe Windows
 - <INSTALL_DIR>/wid_prod/_uninst/uninstall.exe Linux
- Remaining files/directories after uninstall
 - ▶ <INSTALL_DIR>\eclipse\.config
 - ▶ <INSTALL_DIR>\eclipse\links
 - ▶ <INSTALL_DIR>\logs

This slide provides some information about uninstalling WebSphere Integration Developer V6.0.1. Before attempting to uninstall WebSphere Integration Developer there are a few things you should check. First, verify that the WebSphere Process Server and WebSphere Enterprise Service Bus unit test environments are stopped and that you have exited WebSphere Integration Developer. Also, make sure you have logged onto the system as a user with administrative privileges. To launch the uninstall process, run `uninstall.exe` under `<INSTALL_DIR>\wid_prod_uninst\`. After the product has been uninstalled, you might notice some files and directories that remain. The files listed at the bottom of this slide are those that typically are not deleted. If you plan on reinstalling WebSphere Integration Developer into the same `<INSTALL_DIR>` directory, you should delete the entire contents of `<INSTALL_DIR>` before attempting to reinstall.

Summary

- Examined the WebSphere Integration Developer V6.0.1 installation
 - ▶ Considerations for installation
 - ▶ Steps taken during the installation
 - ▶ Resulting configuration information and file system layout
- Provided pointer to information for troubleshooting a failed installation
- Described the uninstall process



This presentation covered the installation of WebSphere Integration Developer V6.0.1, including things to be aware of before installing, the process of installation and the steps involved. The results in terms of registry and configuration data and the file system layout for the installation was also explored. Tips for getting started with troubleshooting a failed installation were provided and finally, the steps needed to uninstall were described.

For additional and in depth information on WebSphere Integration Developer V6.0.1 installation look at the installation guide provided with the installation media.

Trademarks, Copyrights, and Disclaimers

The following terms are trademarks or registered trademarks of International Business Machines Corporation in the United States, other countries, or both:

IBM	CICS	IMS	MQSeries	Tivoli
IBM (logo)	Cloudscape	Informix	OS/390	WebSphere
e(logo)/business	DB2	iSeries	OS/400	xSeries
AIX	DB2 Universal Database	Lotus	pSeries	zSeries

Java and all Java-based trademarks are trademarks of Sun Microsystems, Inc. in the United States, other countries, or both.

Microsoft, Windows, Windows NT, and the Windows logo are registered trademarks of Microsoft Corporation in the United States, other countries, or both.

Intel, ActionMedia, LANDesk, MMX, Pentium and ProShare are trademarks of Intel Corporation in the United States, other countries, or both.

UNIX is a registered trademark of The Open Group in the United States and other countries.

Linux is a registered trademark of Linus Torvalds.

Other company, product and service names may be trademarks or service marks of others.

Product data has been reviewed for accuracy as of the date of initial publication. Product data is subject to change without notice. This document could include technical inaccuracies or typographical errors. IBM may make improvements and/or changes in the product(s) and/or program(s) described herein at any time without notice. Any statements regarding IBM's future direction and intent are subject to change or withdrawal without notice, and represent goals and objectives only. References in this document to IBM products, programs, or services does not imply that IBM intends to make such products, programs or services available in all countries in which IBM operates or does business. Any reference to an IBM Program Product in this document is not intended to state or imply that only that program product may be used. Any functionally equivalent program, that does not infringe IBM's intellectual property rights, may be used instead.

Information is provided "AS IS" without warranty of any kind. THE INFORMATION PROVIDED IN THIS DOCUMENT IS DISTRIBUTED "AS IS" WITHOUT ANY WARRANTY, EITHER EXPRESS OR IMPLIED. IBM EXPRESSLY DISCLAIMS ANY WARRANTIES OF MERCHANTABILITY, FITNESS FOR A PARTICULAR PURPOSE OR NONINFRINGEMENT. IBM shall have no responsibility to update this information. IBM products are warranted, if at all, according to the terms and conditions of the agreements (e.g., IBM Customer Agreement, Statement of Limited Warranty, International Program License Agreement, etc.) under which they are provided. Information concerning non-IBM products was obtained from the suppliers of those products, their published announcements or other publicly available sources. IBM has not tested those products in connection with this publication and cannot confirm the accuracy of performance, compatibility or any other claims related to non-IBM products. IBM makes no representations or warranties, express or implied, regarding non-IBM products and services.

The provision of the information contained herein is not intended to, and does not, grant any right or license under any IBM patents or copyrights. Inquiries regarding patent or copyright licenses should be made, in writing, to:

IBM Director of Licensing
IBM Corporation
North Castle Drive
Armonk, NY 10504-1785
U.S.A.

Performance is based on measurements and projections using standard IBM benchmarks in a controlled environment. All customer examples described are presented as illustrations of how those customers have used IBM products and the results they may have achieved. The actual throughput or performance that any user will experience will vary depending upon considerations such as the amount of multiprogramming in the user's job stream, the I/O configuration, the storage configuration, and the workload processed. Therefore, no assurance can be given that an individual user will achieve throughput or performance improvements equivalent to the ratios stated here.

© Copyright International Business Machines Corporation 2005,2006. All rights reserved.

Note to U.S. Government Users - Documentation related to restricted rights-Use, duplication or disclosure is subject to restrictions set forth in GSA ADP Schedule Contract and IBM Corp.