

IBM WebSphere® 6.0.2 – Lab Exercise

## SCA and Web services

What this exercise is about .....	2
Lab requirements .....	2
What you should be able to do .....	2
Introduction .....	3
Exercise instructions .....	3
Part 1: Setup development environment.....	5
Part 2: Import PortfolioManager and StockQuoteManager projects.....	6
Part 3: Export the StockQuoteService as a Web service .....	7
Part 4: Test the StockQuoteService using the Web Services Explorer .....	8
Part 5: Import StockQuoteService into PortfolioManager as a Web service .....	11
Part 6: Test the PortfolioManager application.....	14
Part 7: Restore server configuration .....	15
What you did in this exercise .....	16
Solution instructions .....	17

## What this exercise is about

This exercise will demonstrate the steps necessary to expose an SCA component as a Web service and invoke that Web service from another SCA module.

## Lab requirements

List of system and software required for the student to complete the lab.

- WebSphere Integration Developer V6.0.2 installed
- WebSphere Process Server V6.0 test environment installed

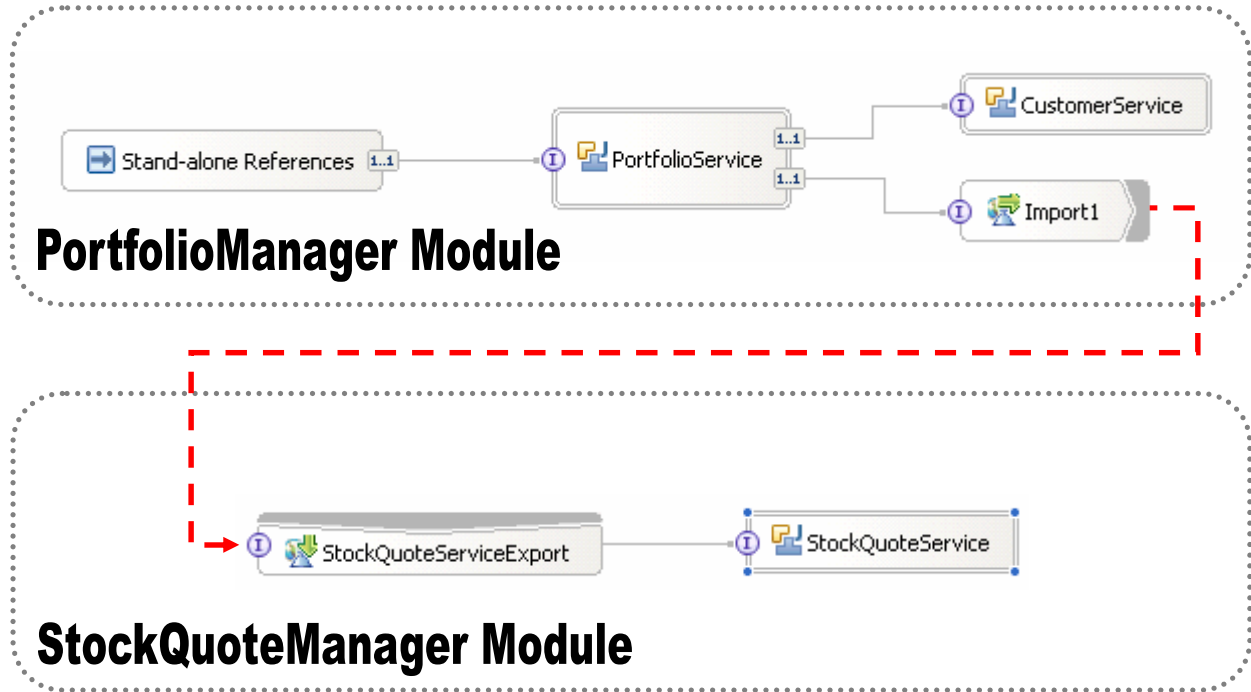
## What you should be able to do

At the end of this lab you should be able to:

- Import a project using the Project Interchange feature
- Export an SCA component using a Web Services binding
- Use the Web Service Explorer to test a Web Service
- Invoke a Web Service using a service import

## Introduction

The following is an overview of the modules in this exercise:



## Exercise instructions

Some instructions in this lab might be specific for Windows® platforms. If you run the lab on a platform other than Windows, you will need to run the appropriate commands, and use appropriate files (for example .sh in place of .bat) for your operating system. The directory locations are specified in the lab instructions using symbolic references as follows:

Reference Variable	Windows Location	Linux <sup>®</sup> Location
<LAB_NAME>	BrokerageWithWS	BrokerageWithWS
<WID_HOME>	C:\Program Files\IBM\WebSphere\ID\6.0	/opt/IBM/WebSphere/ID/6.0
<WPS_HOME>	< WID_HOME >\runtimes\bi_v6	<WID_HOME>/runtimes/bi_v6
<LAB_FILES>	C:\Labfiles602\	/tmp/Labfiles602
<WORKSPACE>	C:\Labfiles602\BrokerageWithWS\workspace	/tmp/Labfiles602/BrokerageWithWS\workspace
<TEMP>	C:\temp	/tmp
<SOLUTION>	C:\Labfiles602\SCA\BrokerageWithWS\solution	/tmp/Labfiles602/SCA/BrokerageWithWS\solution

**Windows users:** When directory locations are passed as parameters to a Java™ program such as EJBdeploy or wsadmin, you must replace the backslashes with forward slashes to follow the Java convention. For example, C:\LabFiles602\ would be replaced by C:/LabFiles602/

Note that the previous table is relative to where you are running WebSphere Integration Developer. The following table is related to where you are running remote test environment:

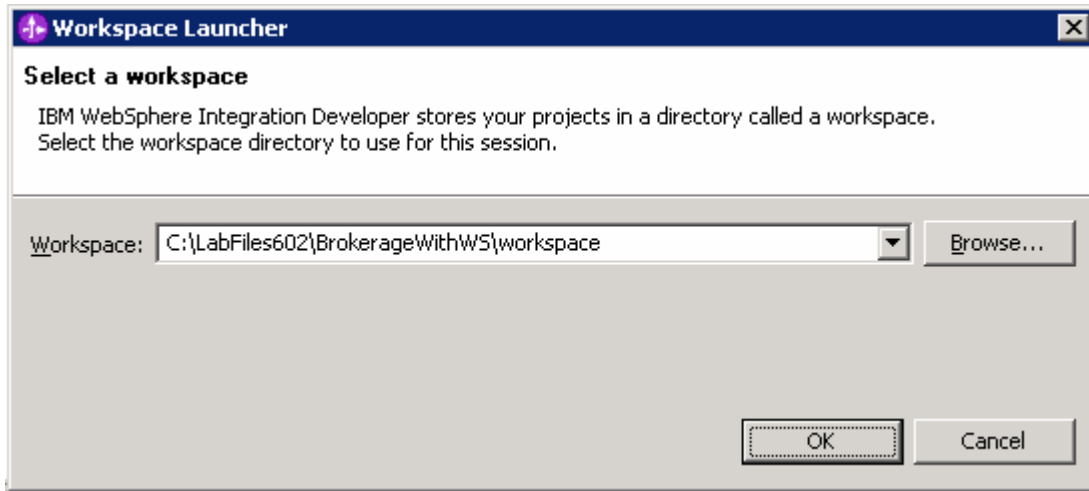
Reference Variable	Example: Remote Windows test server location	Example: Remote z/OS <sup>®</sup> test server location	Input your values for the remote location of the test server
<SERVER_NAME>	server1	cl1sr01	
<WAS_HOME>	C:\Program Files\IBM\WebSphere\AppServer	/etc/cl1cell/AppServerNode1	
<HOSTNAME>	localhost	mvsxxx.rtp.raleigh.ibm.com	
<BOOTSTRAP_PORT>	2809	2809	
<TELNET_PORT>	N/A	1023	
<PROFILE_NAME>	AppSrv01	default	
<USERID>	N/A	cl1admin	
<PASSWORD>	N/A	fr1day	

Instructions for using a remote testing environment, such as z/OS, AIX<sup>®</sup> or Solaris, can be found at the end of this document, in the section "[Task: Adding remote server to WebSphere Integration Developer test environment](#)".

---

## Part 1: Setup development environment

- \_\_\_ 1. Start WebSphere Integration Developer V6.0.2 with a new workspace.
  - \_\_\_ a. Select **Start > Programs > IBM WebSphere > Integration Developer V6.0.2 > WebSphere Integration Developer V6.0.2** from the start menu.
  - \_\_\_ b. Enter **<LAB\_FILES>\BrokerageWithWS\workspace** for your workspace and click **OK** when prompted



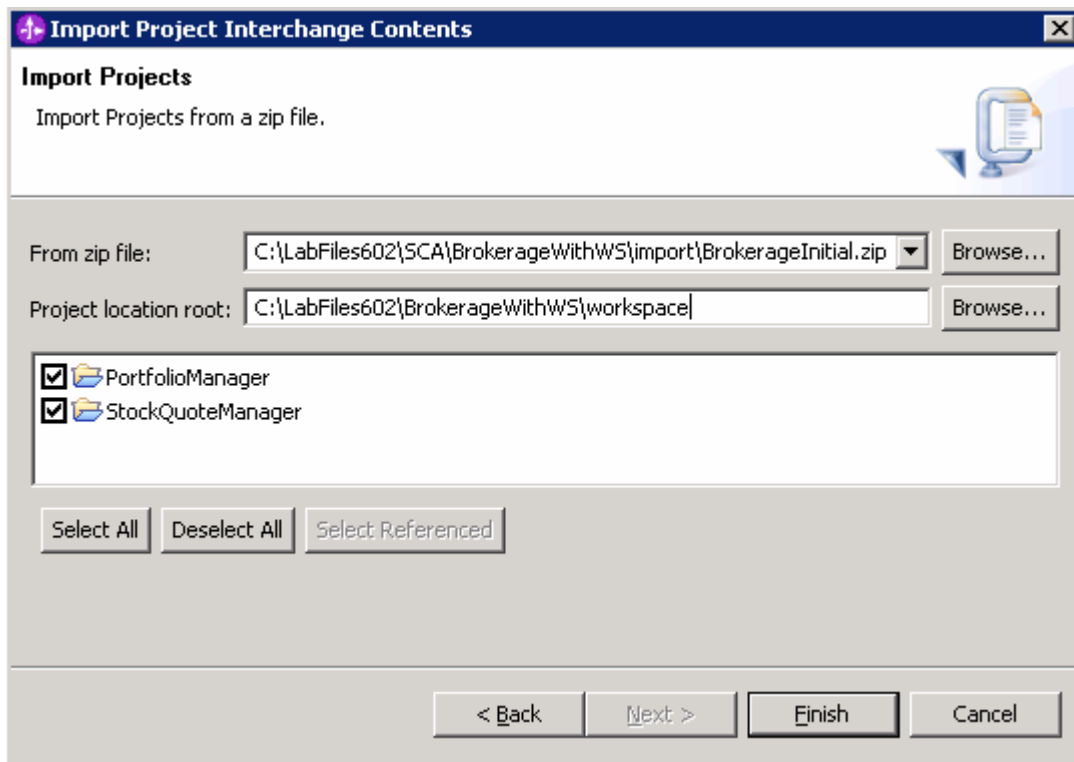
- \_\_\_ c. Close the **Welcome** page after WebSphere Integration Developer V6.0.2 opens...



---


## Part 2: Import PortfolioManager and StockQuoteManager projects

- \_\_\_ 1. Import the project interchange file containing the initial code for the PortfolioManager and StockQuote applications.
  - \_\_\_ a. Select **File → Import**.
  - \_\_\_ b. Select **Project Interchange** from the Import dialog as the import source and click **Next**
  - \_\_\_ c. Use the Browse button to specify the following zipped file:  
**<LAB\_FILES>\SCA\BrokerageWithWS\import\BrokerageInitial.zip**.
  - \_\_\_ d. Enter **<LAB\_FILES>\SCA\BrokerageWithWS\workspace** for the Project location root.
  - \_\_\_ e. Click the **Select All** button to select all projects included in the project exchange .zip file.



- \_\_\_ f. Click **Finish**.

## Part 3: Export the StockQuoteService as a Web service

- \_\_\_ 1. Open the assembly diagram for **StockQuoteManager**.
  - \_\_\_ a. Expand **StockQuoteManager** in the Business Integration view and double click on **Assembly Diagram** (  **Assembly Diagram** ).
- \_\_\_ 2. Export the **StockQuoteService** as a Web Service.
  - \_\_\_ a. In the assembly diagram, right click on the **StockQuoteService** component and select **Generate Export → Web Service Binding**.
  - \_\_\_ b. Select **soap/http** on the Select Transport dialog and click **OK**.
  - \_\_\_ c. Verify that the assembly diagram looks like the following.



- \_\_\_ d. **Save** and **close** the assembly diagram.
- \_\_\_ e. Go to the Window → Show View → Other...
- \_\_\_ f. Expand **Basic** to select **Navigator** from the Show View dialog and click **OK**.
- \_\_\_ g. In the Navigator view, expand the StockQuoteManager module
- \_\_\_ h. Select the StockQuoteInterfaceExport1\_StockQuoteInterfaceHttp\_Service.wsdl file
- \_\_\_ i. Right click and select Open with → XML Source Page Editor
- \_\_\_ j. Review the soap/address binding in the following line and ensure the hostname and port being used are correct. If using a remote WebSphere Process Server machine replace localhost and port 9080 with the correct hostname and port number

Example:

***If using integrated WebSphere Process Server Test Environment:***

```
<soap:address
location="http://localhost:<http_port>/StockQuoteManagerWeb/sca/StockQuoteInterfaceExport1"/
>
```

Where as <http\_port> is the default WebSphere Process Server http port number. Ex:- 9080

***If using remote WebSphere Process Server:***

```
<soap:address location=
"http://<remote_hostname>:<http_port>/StockQuoteManagerWeb/sca/StockQuoteInterfaceExport
1"/>
```

Where as <remote\_hostname> is the hostname of the remote Process Server machine (Ex:- mvsxxx.rtp.raleigh.ibm.com) and <http\_port> is the default WebSphere Process Server http port number. (Ex:- 9080)

**Save** and **Close** the XML Source Page Editor.

---

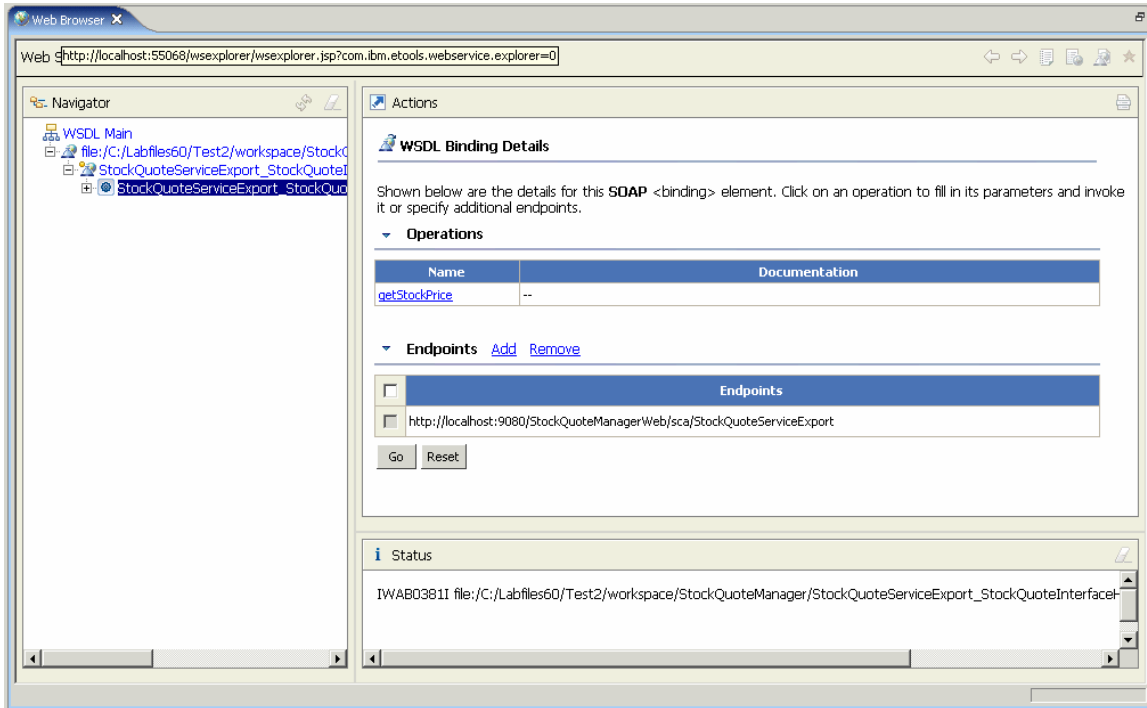
## Part 4: Test the StockQuoteService using the Web Services Explorer

- \_\_\_ 1. Start the server.
  - \_\_\_ a. If using a remote testing environment, follow the directions provided in [Task: Adding remote server to WebSphere Integration Developer test environment](#) (at the end of this document) to add a server to the WebSphere Integration Developer test environment and start it. This is especially true for z/OS, AIX, Solaris remote test environment, where the WebSphere Integration Developer will be remote to the test environment.

If using a local testing environment, right click on the WebSphere Process Server V6.0 from the Server view and select **Start** from the context menu.

- \_\_\_ b. Wait for the server to start.
- \_\_\_ 2. Add the **StockManager** project to the configured projects on the server.
  - \_\_\_ a. Right click on the WebSphere Process Server V6.0 from the Server view and select **Add and remove projects...** from the context menu.
  - \_\_\_ b. Select **StockQuoteManagerApp** from the available projects list and click **Add**.
  - \_\_\_ c. Click **Finish**.
- \_\_\_ 3. Enable the Web Services Development capability.
  - \_\_\_ a. Select **Window → Preferences** from the menu.
  - \_\_\_ b. Expand **Workbench** and click on **Capabilities**.
  - \_\_\_ c. Check the box next to **Web Service Developer** in the capabilities list and click **OK**.
- \_\_\_ 3. Launch the Web Services Explorer for the **StockQuoteService** Web service.
  - \_\_\_ a. Open the **Physical Resources** view by selecting **Window → Show View → Others** and then expand the **Business Integration** and select **Physical Resources** from the menu. Click **OK**.
  - \_\_\_ b. Expand **StockQuoteManager** and right click on the file **StockQuoteInterfaceExport1\_StockQuoteInterfaceHttp\_Service.wsdl** and select **Web Services → Test with Web Service Explorer** from the context menu.
  - \_\_\_ c. Verify that the Web Service Explorer opens in your work area.





\_\_\_ d. Click on the **getStockPrice** link to test this operation.

#### WSDL Binding Details

Shown below are the details for this **SOAP** <binding> element. Click on an operation to fill in its parameters and invoke it or specify additional endpoints.

##### Operations

Name	Documentation
<a href="#">getStockPrice</a>	--

\_\_\_ e. Enter **IBM** for the symbol and click **Go**.




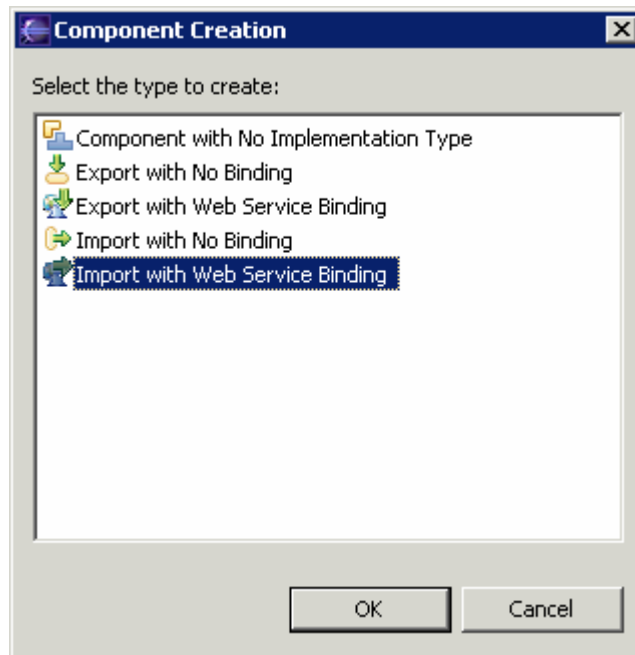
- \_\_\_ f. Verify that you see the following result in the status window at the bottom of the Web Service Explorer.



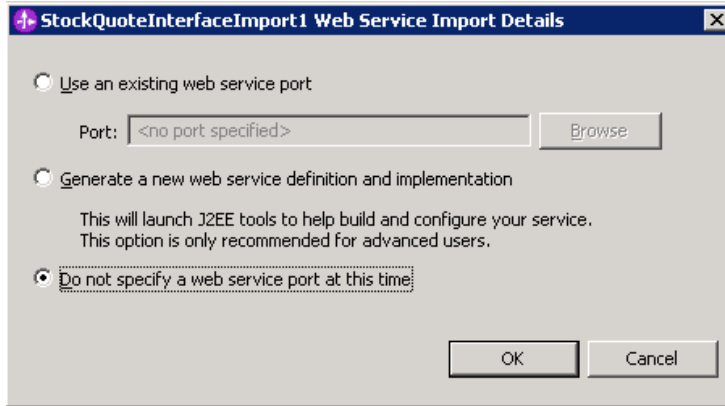
- \_\_\_ g. Switch back to **Business Integration** view by selecting **Window → Show View → Business Integration**.
-

## Part 5: Import StockQuoteService into PortfolioManager as a Web service

- \_\_\_ 1. Open the assembly diagram for **PortfolioManager**.
  - \_\_\_ a. Expand **PortfolioManager** in the Business Integration view and double click on **Assembly Diagram** (  **Assembly Diagram** ).
- \_\_\_ 2. Import the **StockQuoteService** using a Web service binding.
  - \_\_\_ a. Locate the **StockQuoteInterface** in the Business Integration view under **PortfolioManager** → **Interfaces**.
  - \_\_\_ b. Drag and drop the **StockQuoteInterface** on the **PortfolioManager** assembly diagram.
  - \_\_\_ c. Select **Import with Web Service Binding** when the component creation dialog appears and click **OK**.




- \_\_\_ d. Click **OK**.
- \_\_\_ e. Select the radio button next to **Do not specify a Web service port at this time** over the WebService Import Details pop up



\_\_\_ f. Click **OK**

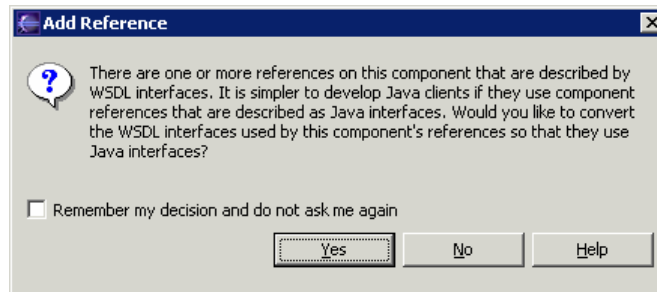
\_\_\_ 3. Create a wire between the **PortfolioService** component and the **StockQuoteInterfaceImport1** component.

\_\_\_ a. Select the wire tool (  ) and then click on the PortfolioService.

\_\_\_ b. Click on the **StockQuoteInterfaceImport1** component.

\_\_\_ c. Click **OK** when you see the message appear indicating that a matching reference will be created on the source node.

\_\_\_ d. Click **No** when prompted if you would like to convert the WSDL interface to a Java interfaces.



\_\_\_ 4. Verify that your diagram looks like the following:

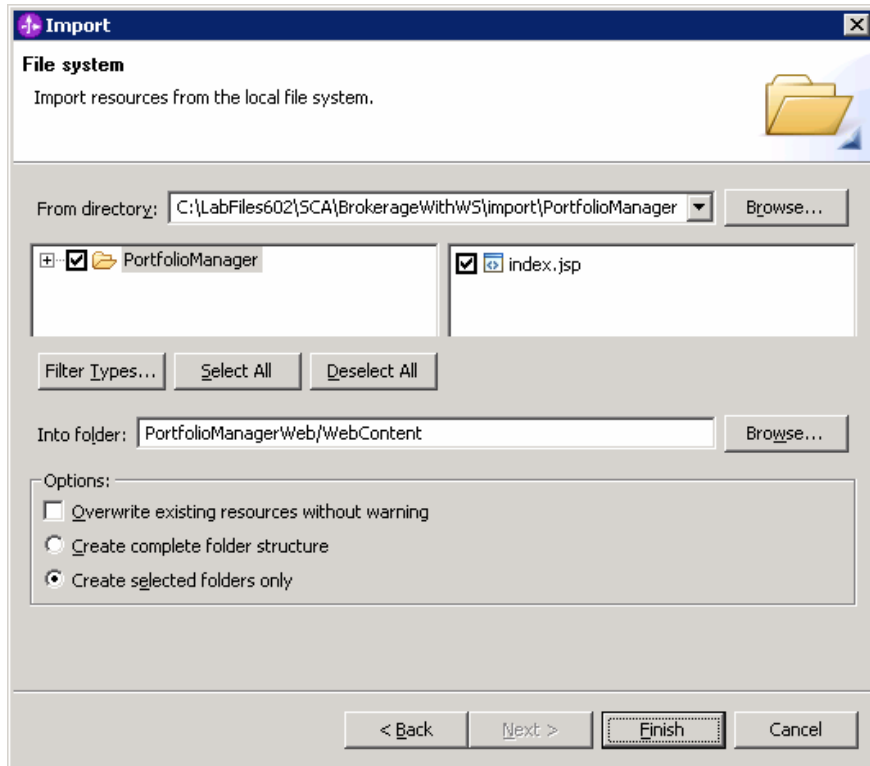


\_\_\_ 5. Copy the **StockQuoteInterfaceExport1\_StockQuoteInterfaceHttp\_Service.wsdl** file into the PortfolioManager project.

\_\_\_ a. Locate the **StockQuoteInterfaceExport1\_StockQuoteInterfaceHttp\_Service.wsdl** file in the Physical Resources view under StockQuoteManager.

\_\_\_ b. Right click and select **Copy** from the context menu.

- \_\_\_ c. Remain in the Physical Resources view and right click on the **PortfolioManager** project and select **Paste** from the context menu.
  
- \_\_\_ 6. Update the bindings for StockQuoteInterfaceImport1.
  - \_\_\_ a. Click on StockQuoteInterfaceImport1 in the assembly editor and go to the binding tab in the Properties view.
  - \_\_\_ b. Click the Browse button Next to Service and select **StockQuoteInterfaceExport1\_StockQuoteInterfaceHttp\_Service.wsdl** from the list.
  - \_\_\_ c. Select **StockQuoteInterfaceExport1\_StockQuoteInterfaceHttpPort** on the select a port dialog and click **OK**.
  
- \_\_\_ 7. **Save** and **Close** the assembly editor file.
  
- \_\_\_ 8. Import the client JSP file.
  - \_\_\_ a. Select **File → Import** from the menu.
  - \_\_\_ b. Select 'File System' and click **Next**.
  - \_\_\_ c. Click the Browse button from the File system import dialog and choose the following for the From directory: **<LAB\_FILES>\SCA\BrokerageWithWS\import\PortfolioManager**.
  - \_\_\_ d. Check the box next to the index.jsp file and click the Browse button to select **PortfolioManagerWebWebContent** as the Into folder.




- \_\_\_ e. Click **Finish**.

---

## Part 6: Test the PortfolioManager application

- \_\_\_ 1. Add the PortfolioManager project to the configured projects on the server.
- \_\_\_ a. Right click on the WebSphere Process Server V6.0 from the Server view and select **Add and remove projects...** from the context menu.
  - \_\_\_ b. Select **PortfolioManagerApp** from the available projects list and click **Add**.
  - \_\_\_ c. Click **Finish**.
- \_\_\_ 2. Test the PortfolioService service component.
- \_\_\_ a. Open a Web browser and enter the following URL.  
<http://<HOSTNAME>:9080/PortfolioManagerWeb/index.jsp>

---

**NOTE:** To open the embedded browser within WebSphere Integration Developer V6, select **Window → Customize Perspective** from the menu. Click on the Commands tab in the Customize Perspective dialog and scroll to the bottom of the available command groups list until you find Web Browser. Check the box next to Web Browser and click **OK**. Click the Web browser icon () now in your toolbar to open the embedded Web browser.

---

- \_\_\_ b. Verify that you see the following page displayed in the browser.

### Portfolio Application

Enter Customer ID:

- \_\_\_ c. Enter **123-45-6789** for the Customer ID and click **Submit**.
- \_\_\_ d. Verify that you see the following output.

### Portfolio Application

Enter Customer ID:

The value is: 11500.0

---

## Part 7: Restore server configuration

- \_\_\_ 1. Remove the StockManager and PortfolioManager project from the configured projects on the server
  - \_\_\_ a. Right click on the WebSphere Business Integration Server V6.0 from the Server view and select **Add and remove projects...** from the context menu.
  - \_\_\_ b. Select PortfolioManager from the configured projects list and click **Remove**.
  - \_\_\_ c. Select StockManager from the configured projects list and click **Remove**.
  - \_\_\_ d. Click **Finish**.
- \_\_\_ 2. Stop the server.
  - \_\_\_ a. Right click on WebSphere Process Server V6.0 server from the Servers view and select **Stop** from the context menu.

## What you did in this exercise

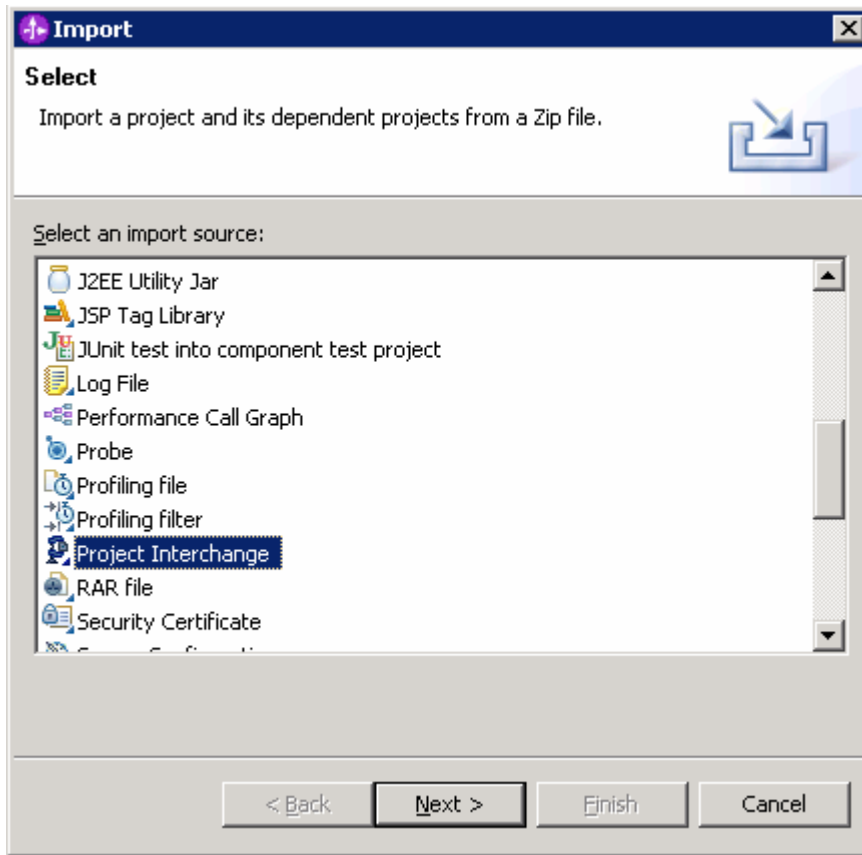
In this exercise you used WebSphere Integration Developer V6 tools to do the following tasks:

- Import a project using the Project Interchange feature
- Export an SCA component using a Web Services binding
- Use the Web Service Explorer to test a Web Service
- Invoke a Web Service using a service import



## Solution instructions

- \_\_\_ 1. Start WebSphere Integration Developer V6.0.2 with a new workspace.
  - \_\_\_ a. Follow the instructions outlined in Part 1 of this exercise.
- \_\_\_ 2. Import the project interchange file **BrokerageWithWS\_Pi.zip** from **<LAB\_FILES>\SCA\BrokerageWithWS\solution** directory.
  - \_\_\_ a. Select **File → Import** from the menu.
  - \_\_\_ b. Select **Project Interchange** in the **Import** dialog and click **Next**.

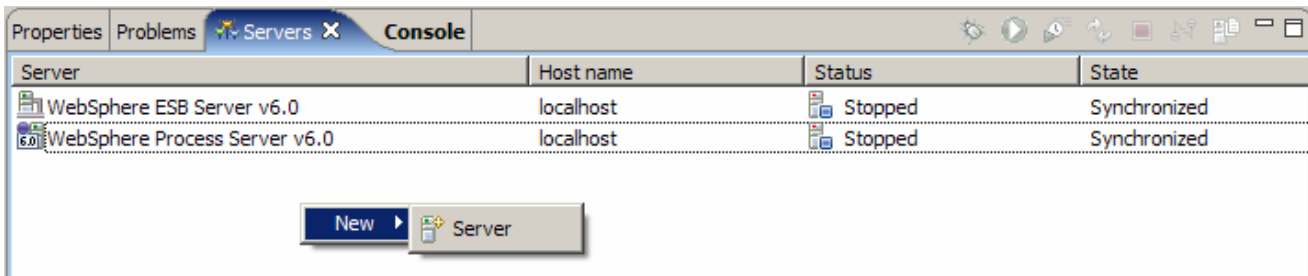


- \_\_\_ c. Click on the **Browse** button and select the **BrokerageWithWS\_Pi.zip** in the **<LAB\_FILES>\SCA\BrokerageWithWS\solution** directory for the "From zip file".
  - \_\_\_ d. Enter **<LAB\_FILES>\BrokerageWithWS\workspace** for the **Project location root** and click **Next**
  - \_\_\_ e. Click the Select All button and click **Finish**.
- \_\_\_ 3. Continue with the lab and do Part 4, 6, and 7 of this lab.

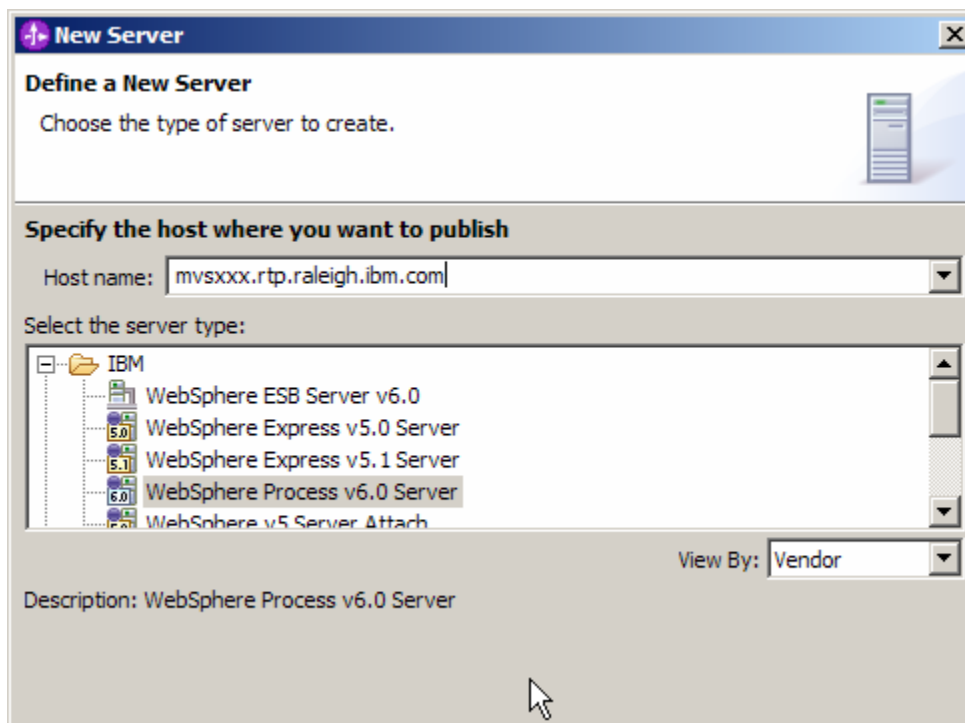
## Task: Adding remote server to WebSphere Integration Developer test environment

This task describes how to add a remote server to the WebSphere Integration Developer Test environment. The sample will use a z/OS machine.

- \_\_\_ 1. Create a new remote server.
- \_\_\_ 2. Right click on the background of the Servers view to access the pop-up menu.
- \_\_\_ 3. Select **New > Server**.



- \_\_\_ 4. Specify hostname to the remote server, **<HOSTNAME>**.
- \_\_\_ 5. Ensure that **'WebSphere Process v6.0 Server'** is highlighted in the server type list.



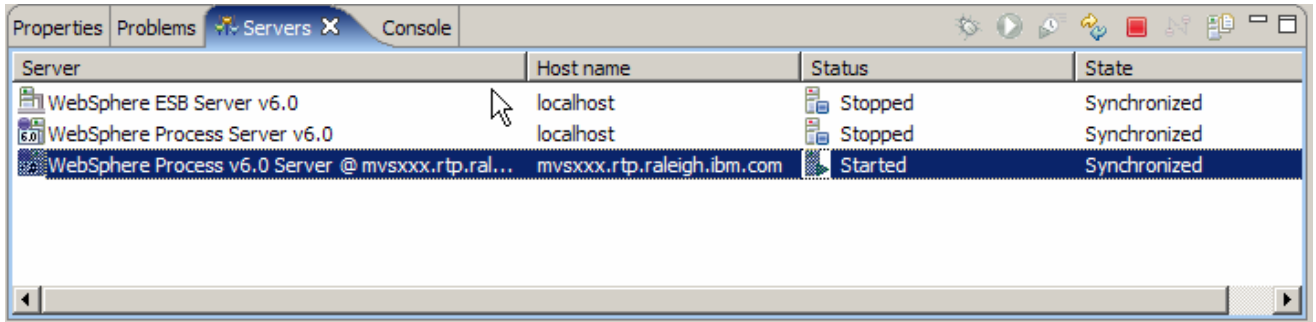
- \_\_\_ 6. Click **Next**.

- \_\_\_ 7. On the WebSphere Server Settings page, select the radio button for **RMI** and change the ORB bootstrap port to the correct setting (<**BOOTSTRAP\_PORT**>).

The screenshot shows the 'New Server' dialog box with the following settings:

- WebSphere profile name:** [Empty]
- Server connection type and admin port:**
  - RMI (Better performance)**
    - ORB bootstrap port:** 9131
  - SOAP (More firewall compatible)
    - SOAP connector port:** 8880
- Run server with resources within the workspace
- Security is enabled on this server
- Current active authentication settings:**
  - User ID:** [Empty]
  - Password:** [Empty]
- Server name:** server1
- Server type:**
  - BASE, Express or unmanaged Network Deployment server**
  - Network Deployment server
    - Network Deployment server name:** [Empty]
    - The server name is in the form of: <cell name>/<node name>/<server name>  
For example, localhost/localhost/server1.
    - Detect** Click this button to detect the server type.

- \_\_\_ 8. Click **Finish**.
- \_\_\_ 9. The new server should be seen in the Server view.



\_\_\_ 10. Start the remote server if it is not already started. WebSphere Integration Developer does not support starting remote servers from the Server View.

\_\_\_ 11. From a command prompt, telnet to the remote system if needed:

**'telnet <HOSTNAME> <TELNET\_PORT>'**

userid : <USERID>

pw : <PASSWORD>

\_\_\_ 12. Navigate to the bin directory for the profile being used:

**cd <WAS\_HOME>/profiles/<PROFILE\_NAME>/bin**

\_\_\_ 13. Run the command file to start the server: **./startServer.sh <SERVER\_NAME>**

\_\_\_ 14. Wait for status message indicating server has started:

```

ADMU3200I: Server launched. Waiting for initialization status.
ADMU3000I: Server c11sr01 open for e-business; process id is 0000012000000002
    
```