



IBM Software Group

IBM Business Process Management Suite V6.1.2

Getting started with business space



@business on demand.

© 2008 IBM Corporation
Updated August 22, 2008

This presentation provides how to get started with the new business space feature in the BPM V6.1.2 portfolio. An overview of business space, covered in a separate presentation, would be helpful in understanding this presentation.

Goals

- Goal of this presentation
 - ▶ Getting started with business space
 - ▶ Show some samples of business space
- You will learn:
 - ▶ How to get started with business space
 - ▶ Log into business space
 - ▶ Create and manage business space, pages within a space
 - ▶ User access and sharing of space and page



The goals of this presentation is to show how you can get started with the Business Space environment. The getting started applies to Business Space across all the BPM V6.1.2 products. Each of the BPM products will dive into the details of the specific Business Space widgets and how to use them.

The presentation closes with some samples of the Business Space user interface.

Business space – Overview (recap)

- Provides a single, rich, holistic user experience to Business users
- Unifying front end for IBM's BPM products to access business related data
- Web browser based
- Blurs the distinction between business and IT
- It is not a separate product, but bundled with all BPM products



A business space is a collection of related Web content that provides you with insight into your business and the capability to react to changes in it.

Business Space unifies the Business Process Management user interface space for business users to allow them to work in a single window for all the business activities taking place in different BPM products in the suite. Business Space is a mash-up of BPM widgets targeted for a business user.

Business Space is not a separate product but part of the BPM products.

Section

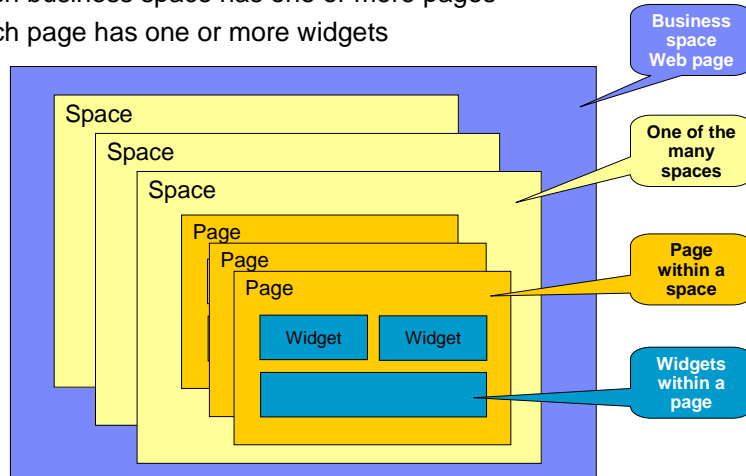
Getting started with business space



The next section covers how to get started with Business Space.

Business space – Viewing hierarchy

- A business space is a Web page that has the following:
 - ▶ One or more business Spaces (sometimes referred to as “spaces” only)
 - ▶ Each business space has one or more pages
 - ▶ Each page has one or more widgets



The Business Space viewing Web page consists of one or more Business Spaces. Each Business Space can contain one or more tabbed pages, and each page can contain one or more widgets. As a business user, you control how many Business Spaces you want on your Business Space Web page, and for each Business Space, how many pages and widgets you like to see. Templates are provided for specific Business Space based on specific business functions performed by the different roles of a business user.

The viewing hierarchy will get clearer in the next few pages when showing you how to get started with Business Space.

Logging into business space

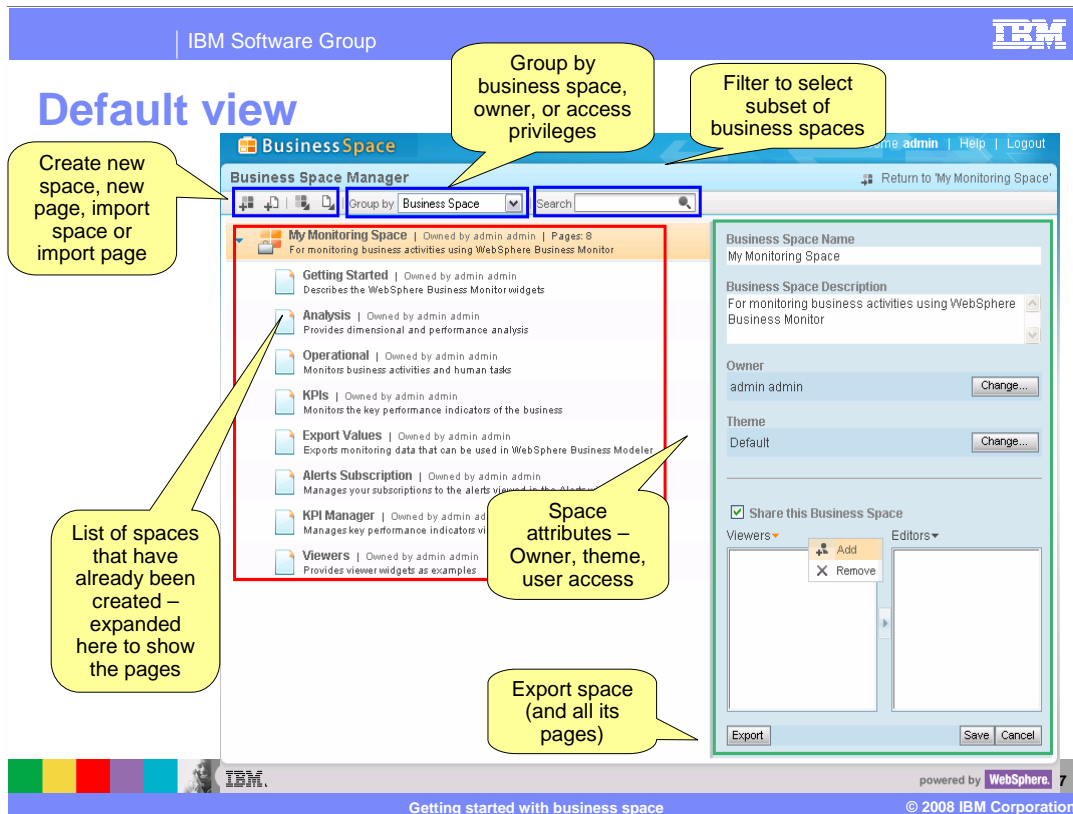
- URL: <http://<host:port>/BusinessSpace>



- Alternatively, from within the WebSphere® Integration Developer for the unit test environment



This slide lists the URL to give you access to business space. A special option to start the Business Space browser is provided within the WebSphere Integration Developer for the unit test environment server. You can continue to the URL to access even for the unit test environment. This slide also shows a screen capture of the login page where you will need to enter your user ID and password.



The business space Web page allows you to manage the Business Spaces within your environment.

The default view of the Business Space is the Business Space Manager from where you can manage all the spaces for which you have access.

The Business Space manager can list all the Business Spaces, or Business spaces by owners, or Business Spaces for which you have access privileges, whether that be viewing or editing rights.

If there are many business Spaces within your environment, you can search using a search string to reduce the subset of Business Spaces in the default view.

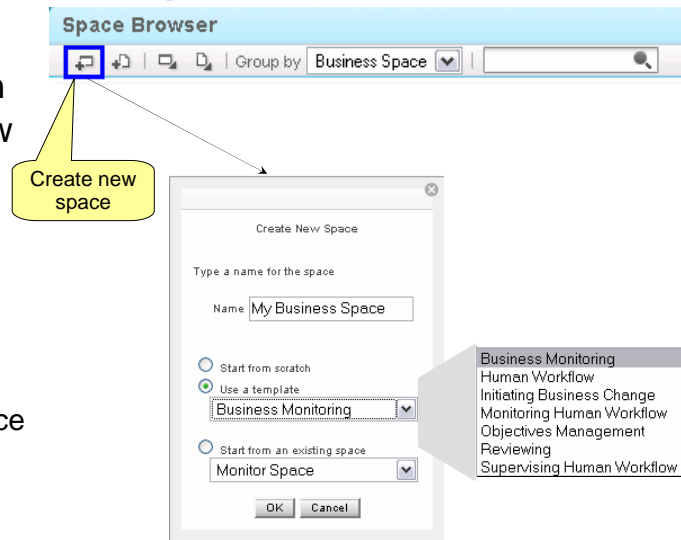
In the upper left corner there are icons which allow you to create a space, create a page on a space, import space or import page.

You can view a specific Business Space by clicking on the Business Space name, like “My Monitoring Space” in the picture shown here. Once in a specific Business space view, you can always return to the Business Space Manager.

On the right side is the area to change the selected Space attributes. These are the name, description, themes to change the color and look of the window, owner and access list for sharing the space with other users. You can also export the space for other users to use the same space created by you.

Creating new business space

- Click icon (shown on right) to create a new business space
- Business space can be created from
 - ▶ Scratch
 - ▶ Template
 - ▶ Existing business space
- Space templates create predefined business spaces



As a Business space user, you can create one or more Spaces within your Business Space environment. New space can be created from the icon, as shown on the page.

There are several options on how to create a new Business Space. You can start from scratch where you add the pages and widgets that you need to interact with the business data.

You can start from an existing business space, or you can create a new space from one of the pre-defined templates.

New business space from templates

- Product space templates

Space template name	BPM product
Reviewing	WebSphere Business Modeler Publishing Server
Business Monitoring	WebSphere Business Monitor
Human Workflow	WebSphere Process Server

- Advanced cross product space templates

Objectives Management	WebSphere Business Monitor, WebSphere Process Server, WebSphere Business Service Fabric
Monitoring Human Workflow	WebSphere Business Monitor, WebSphere Process Server
Supervising Human Workflow	WebSphere Business Monitor, WebSphere Process Server
Initiating Business Change	WebSphere Business Monitor, WebSphere Process Server, WebSphere Business Modeler Publishing Server

9

There are two types of templates to create predefined Business Spaces. One of them is the Base templates that are product centric. There is a template for Business Monitor that exposes the pages and widgets targeted for a Business Monitor dashboard user. Another template, called Review, is targeted for the Publishing server user. Yet another one, called Human Workflow, for WebSphere Process Server user.

The other type of template are advanced templates to create space that spans the product boundaries and provides the pages and spaces for the specific roles performed by the business user. There is an Objectives Management template for business leader, Initiating Business Change for Business Analyst, Supervising Human Workflow for Business supervisor and Monitoring Human workflow for business workers.

Export or import space and page

- Export space or page:
 - ▶ Allows others to create their own copy of your space or page
 - ▶ Exporting a space contains all the pages within that space
 - ▶ Space or page saved in DATA file that can be imported by others using the import function
- Import space or page
 - ▶ Allows you to import space or page from the DATA file of an exported space or page



You can import or export either the entire space or a specific page within a space.

Exporting a space allows others to create their own copy of the space, rather than sharing the space. When exporting the space, all the pages in the space are included in the exported file which is saved in a DATA file. The DATA file can then be imported by other users who want to make a copy of your space. The export and import of page works in the same way, except only the page content is contained in the DATA file.

Managing business space

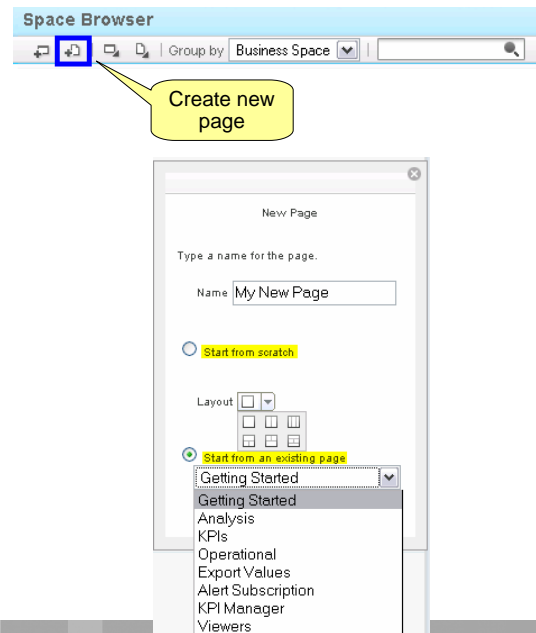
- Create
- Delete
- Export
- Import
- Add page
- Modify space attributes
 - ▶ Description
 - ▶ Theme
 - ▶ Share business space and user access
 - ▶ Change owner



From the Business Space manager, you can perform several functions related to Business Spaces. Some of them, like creating, importing, exporting have already covered in pervious pages. You can additionally delete a Business Space, add new pages to a space, and modify the attributes.

Creating new page within a space

- Can define a new page from scratch and specify the layout
- Or, for a space built from pre-defined template, can start from an existing page



12

Getting started with business space

© 2008 IBM Corporation

You can create one or more pages on the given business space. New page can be created from the icon, as shown on this slide.

The space can be from scratch, where you specify the layout, and then add the widgets to the page. Alternatively, you can use an existing page as a starting point.

Business space page

BusinessSpace

Welcome admin | Help | Logout

Space1

KPIs | Getting Started | Analysis | Operational | Export Values | Alert Subscription | KPI Manager | Viewers

Diagrams

To begin using this widget, configure the widget settings by clicking Configure from the widget menu.

Add a widget

KPI Name	Status	Value	Target	Value in Range
Average Order Fulfillment KPI August 2006	↓	3 d, 18 h, 0 m, 0 s	3 d, 0 h, 0 m, 0 s	
Average Order Price KPI (Dollars)		575	300	
Declined Order KPI		4	3	
Order Count KPI		20		
Percent of Orders Approved KPI		20	90	
Ship Count KPI		4		

Alerts

Mark Read | Mark Unread | Forward Alert | Remove

Page 0 of 0 | Go to page: | Results 0 to 0 of 0

Add a widget

Add widgets to page by clicking the "Add a widget" link or dragging widget from palette on top of the link

Page 1 of 1 | Go to page: | Results 1 to 6 of 6

Add a widget

Getting started with business space

© 2008 IBM Corporation

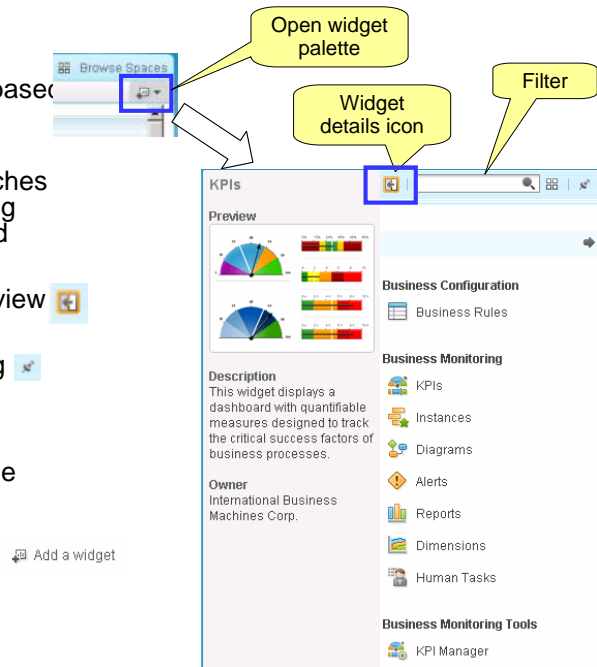
When you click on a specific space in the space browser, it will open the page browser where you can click on a tab to view any page in the given space. The current space is listed in the header. Pages are opened as selectable tabs. In this example, the KPIs page in a space called Space1 is being displayed. There is an arrow next to each space name and page name where you can access a menu to perform additional functions. There is also an x icon which is used to close the page. Note that closing a page does not remove a page from a space, it hides the view of the page.

Page layout can be selected at the time that you create the page and anytime thereafter, so you can adjust the number of rows and columns in the page.

Pages display the KPI related widgets for the KPI page, and you see widgets for Diagrams, KPIs and Alerts. Additional widgets can be added to this page by dragging the widget from the palette to any "Add a widget" link.

Widget palette

- Shows list of available widgets based on widgets registered with the Business Space
- Filterable by search term - searches across all widget details including name, description, category, and owner
- Provides widget details and preview image in “pop-out” panel
- Pin palette to allow multiple drag operations
- Display icons or names
- Widgets can be dragged from the palette on the canvas
- “Add a widget” dialog provides alternate way to add widgets to canvas



The widget palette can be accessed by click on the icon in the upper right corner of the page. You will see all the widgets from all the installed products on this server and from all registered widgets from external servers.

You can enter a search term which is handy if you have a long list of widgets. The text that you enter is searched across all the details of the widgets including name, description, category and owner.

You can click to pop out details about the widgets. As you see in this screen capture, the details are shown for the KPIs widget. You can click on the icon again to remove the pop out.

From the palette, you can drag widgets onto a page. If you have multiple drag operations to perform, then you can pin the palette so that the palette will not close after each drag operation.

There is an icon to switch the display between icons and text. In this sample you see the text displayed for each widget.

To add a widget, instead of using the palette, you can also click on the “Add the widget” link in the page, This will show the widgets in a popup list.

User access control

- Spaces and pages have separate access lists that contain users and groups.
- Users and groups can have view or edit access to a space or page
- Users and groups can be granted view or edit access to a page
 - ▶ Results in implicit view access to the parent space.
- Space and page ownership:
 - ▶ Any user can create a space.
 - ▶ A user who creates a space or page immediately becomes its owner.
 - ▶ Owners implicitly have edit access, plus extra privileges.
- Note: Data access control is independent of space and page access control. It is left up to each widget to manage its user access to data it provides.



There is a separate access list for each space and page. You can specify that a user or group have view or edit privilege. If a user is given access to a page, but not its parent space, then the user is given implicit view access to the parent space. When you create a space or page, you become its owner so you have the ability to edit it, assign privileges and even to delete it. Note that the access to the data is independent of this access list, so the widget needs to manage its own access list for security of the data.

User access rights

Role	Space rights	Page rights
Viewer	<ul style="list-style-type: none"> ▪ Can view space. ▪ Can view space properties. ▪ Can browse accessible pages in space. 	<ul style="list-style-type: none"> ▪ Can view page. ▪ Can view page properties. ▪ No palette available.
Editor	<ul style="list-style-type: none"> ▪ All of space viewer rights above, plus: ▪ Can create pages. ▪ Can edit space properties 	<ul style="list-style-type: none"> ▪ All of page viewer rights above. Plus ▪ Can edit page (add and remove widgets, change layout) ▪ Can configure widgets on page ▪ Can edit page properties. ▪ Palette available.
Owner	<ul style="list-style-type: none"> ▪ All of space editor rights above, plus: ▪ Can share space (grant access) ▪ Can delete space. 	<ul style="list-style-type: none"> ▪ All of page editor rights above. Plus ▪ Can share page (grant access) ▪ Can delete page.
Super-user	<ul style="list-style-type: none"> ▪ All of space owner rights above, plus: ▪ Can change owner. ▪ No access control restrictions. 	<ul style="list-style-type: none"> ▪ All of page owner rights above. Plus ▪ Can change owner. ▪ No access control restrictions.



This table lists the access rights by privilege for both spaces and pages. A viewer can view information but not edit information. An editor can edit spaces, pages and properties. An owner can perform functions such as edit, share and delete. The super user has all the rights of the owner, and additionally can change the owner for a space or page.

Sample – Publishing server

The screenshot displays the BusinessSpace application interface. The top navigation bar includes 'Processes' and 'Process Models'. The main content area is divided into several sections:

- Review Drafts:** A tree view on the left showing a hierarchy of process models, including 'AccountVerificationToBe'.
- Model Elements:** A central workspace displaying a detailed process flow diagram with various tasks and connectors. Controls for 'Font', 'Zoom' (25%), and 'Layout type' (Free Form) are visible above the diagram.
- Comments:** A panel on the right for managing comments. It includes buttons for 'Add Comment', 'Add Response', 'Delete Comment', and 'Export'. A filter is set to 'Local task: Customer Retrieval'. Below the buttons, the 'Name' is 'Customer Retrieval' and the 'Description' is 'This will be an MQ lab, it is defined with an undefined technical implementation type so it will show as a regular component. This search will be based on using the attribute customer id.'
- Outline:** A panel on the bottom left showing a list of process models, with 'Customer Retrieval' selected.

Three yellow callout boxes highlight key features:

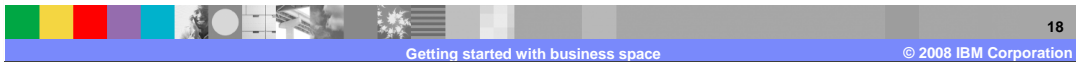
- 'Review published process models' points to the 'Review Drafts' tree.
- 'Add comments to process model' points to the 'Comments' panel.
- 'Explore process models' points to the 'Outline' panel.

The bottom of the interface shows the IBM logo, the text 'Getting started with business space', the page number '17', and the copyright notice '© 2008 IBM Corporation'.

Here is an example of the Business Space for the WebSphere Business Modeler Publishing Server. The different widgets to explore the models, look at the published models, add comments to the model are shown here as an example.

Section

Browser requirements



The next section covers the browser requirements for business space.

BPM V6.1.2 Browser requirements

- WebSphere Business Modeler Publishing Server widgets and Diagram widget of WebSphere Business Monitor require Internet Explorer Version 6.0 or higher with the Adobe® SVG Viewer Version 3.0.3 browser plug-in
- Remaining BPM widgets require either Internet Explorer® Version 6.0 or higher, or Mozilla Firefox 2.0 or higher
- When using Presentation, Spreadsheet, and Documentation widgets with Firefox browser, you can download them but not view them, unlike Internet Explorer where you can view them



Most of the widgets work fine with Internet Explorer or Mozilla Firefox browsers, with few exceptions.

Widgets from WebSphere Business Modeler Publishing Server, and the Diagram widget of WebSphere Business Monitor require Internet Explorer Version 6.0 or higher with the Adobe SVG Viewer Version 3.0.3 browser plug-in. They do not work when using Firefox browser.

If you are using Mozilla Firefox, you can download Microsoft PowerPoint, Excel, and Word files from the Presentation, Spreadsheet, and Documentation widgets. If you are using Microsoft Internet Explorer, these widgets display the file contents.

Section

Summary

The next section covers the summary of this presentation.

Summary

- This presentation covered the basics of how to get started with business space, specifically:
 - ▶ View hierarchy
 - ▶ Creating and managing spaces
 - ▶ Creating and managing pages
 - ▶ Adding widgets
 - ▶ User access and sharing spaces and pages
- Details of how to use the specific BPM product specific widgets are covered in the product business space presentations



In summary, this presentation covered the basics of how to get started and manage the business space for all the BPM products. The details of how to use the specific BPM product specific widgets are covered in the separate product Business Space presentations

Feedback

Your feedback is valuable

You can help improve the quality of IBM Education Assistant content to better meet your needs by providing feedback.

- Did you find this module useful?
- Did it help you solve a problem or answer a question?
- Do you have suggestions for improvements?

Click to send e-mail feedback:

mailto:iea@us.ibm.com?subject=Feedback_about_WPIv612_BusinessSpace_GettingStarted.ppt

This module is also available in PDF format at:
[../WPIv612_BusinessSpace_GettingStarted.pdf](..WPIv612_BusinessSpace_GettingStarted.pdf)



You can help improve the quality of IBM Education Assistant content by providing feedback.

Trademarks, copyrights, and disclaimers

The following terms are trademarks or registered trademarks of International Business Machines Corporation in the United States, other countries, or both:

IBM WebSphere

A current list of other IBM trademarks is available on the Web at <http://www.ibm.com/legal/copytrade.shtml>

Internet Explorer, and the Windows logo are registered trademarks of Microsoft Corporation in the United States, other countries, or both.

Adobe is a registered trademarks of Adobe Systems Incorporated in the United States, other countries, or both.

Product data has been reviewed for accuracy as of the date of initial publication. Product data is subject to change without notice. This document could include technical inaccuracies or typographical errors. IBM may make improvements or changes in the products or programs described herein at any time without notice. Any statements regarding IBM's future direction and intent are subject to change or withdrawal without notice, and represent goals and objectives only. References in this document to IBM products, programs, or services does not imply that IBM intends to make such products, programs or services available in all countries in which IBM operates or does business. Any reference to an IBM Program Product in this document is not intended to state or imply that only that program product may be used. Any functionally equivalent program, that does not infringe IBM's intellectual property rights, may be used instead.

Information is provided "AS IS" without warranty of any kind. THE INFORMATION PROVIDED IN THIS DOCUMENT IS DISTRIBUTED "AS IS" WITHOUT ANY WARRANTY, EITHER EXPRESS OR IMPLIED. IBM EXPRESSLY DISCLAIMS ANY WARRANTIES OF MERCHANTABILITY, FITNESS FOR A PARTICULAR PURPOSE OR NONINFRINGEMENT. IBM shall have no responsibility to update this information. IBM products are warranted, if at all, according to the terms and conditions of the agreements (for example, IBM Customer Agreement, Statement of Limited Warranty, International Program License Agreement, etc.) under which they are provided. Information concerning non-IBM products was obtained from the suppliers of those products, their published announcements or other publicly available sources. IBM has not tested those products in connection with this publication and cannot confirm the accuracy of performance, compatibility or any other claims related to non-IBM products.

IBM makes no representations or warranties, express or implied, regarding non-IBM products and services.

The provision of the information contained herein is not intended to, and does not, grant any right or license under any IBM patents or copyrights. Inquiries regarding patent or copyright licenses should be made, in writing, to:

IBM Director of Licensing
IBM Corporation
North Castle Drive
Armonk, NY 10504-1785
U.S.A.

Performance is based on measurements and projections using standard IBM benchmarks in a controlled environment. All customer examples described are presented as illustrations of how those customers have used IBM products and the results they may have achieved. The actual throughput or performance that any user will experience will vary depending upon considerations such as the amount of multiprogramming in the user's job stream, the I/O configuration, the storage configuration, and the workload processed. Therefore, no assurance can be given that an individual user will achieve throughput or performance improvements equivalent to the ratios stated here.

© Copyright International Business Machines Corporation 2008. All rights reserved.

Note to U.S. Government Users - Documentation related to restricted rights-Use, duplication or disclosure is subject to restrictions set forth in GSA ADP Schedule Contract and IBM Corp.

