



IBM Software Group

IBM WebSphere® Enterprise Service Bus V6.1 IBM WebSphere Process Server V6.1

System migration



@business on demand.

© 2008 IBM Corporation
Updated March 19, 2008

This presentation will cover migration of system artifacts from V6.0 of WebSphere Enterprise Service Bus and WebSphere Process Server to V6.1.

Goals

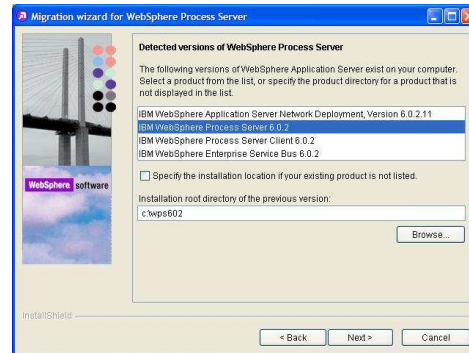
- Migration V6.0 – V6.1
 - ▶ Profiles
 - ▶ Configuration
 - ▶ Applications
 - ▶ Scripts

- Migration common to
 - ▶ WebSphere Enterprise Service Bus
 - ▶ WebSphere Process Server

This migration of version 6.0 artifacts to version 6.1 includes the profiles, configuration, applications and scripts. The slides in this presentation apply to both the WebSphere Enterprise Service Bus and the WebSphere Process Server.

Profile migration

- Profiles from V6.0.1 or V6.0.2 to V61
 - ▶ WebSphere Enterprise Service Bus
 - ▶ WebSphere Process Server
 - ▶ WebSphere Process Server Client
- Configuration migration
- Enterprise application migration
 - ▶ Sample, System, Product, User
- Database migration
 - ▶ Cloudscape® to Derby
- Tools
 - ▶ WBIPreUpgrade script
 - ▶ WBIPostUpgrade script
 - ▶ Migration Wizard migration.bat on Distributed platforms



A runtime migration path between V6.0 and V6.1 is needed when upgrading to V6.1. This is not an in-place update but rather the V6.1 version of the product must be installed beside the V6.0 version of the product. A runtime migration must be performed in order to migrate the existing V6.0 profiles to V6.1 profiles. This migration involves migrating the configuration files (server, resource, cell configuration files), user applications, and "system" or "admin" applications.

The sample applications are not migrated but are provided with the V6.1 installation. Database migration from Cloudscape to the new Derby version of the default database is also provided.

A GUI is provided which uses the WBIPreUpgrade and WBIPostUpgrade. These scripts can also be used without the GUI which is started using the migration script.

Profile migration

- Previous versions

- Profile selection

- Profile creation
 - ▶ New
 - ▶ Existing

Migration wizard for WebSphere Process Server

Detected versions of WebSphere Process Server

The following versions of WebSphere Process Server exist on your computer. Select a product from the list, or specify the product directory for a product that is not displayed in the list.

IBM WebSphere Process Server, Version 6.0.2.0

Source profile selection

Select the profile or instance that you want to migrate.

Source profile:

Dmgr01
Dmgr01
ProcSrv01

Target profile selection

You can migrate the selected source profile to an existing profile or create a new profile. Only valid profiles based on type are listed. Select the profile to which you want to migrate.

Target profile:

<Create new profile>

Back up the target profile before migrating the source

You can use the **restoreConfig** command to restore the configuration as required.

4

The profile migration will detect any previous versions of the server that is installed on the same system as the new V6.1 installation. Select the previous version and then the profile which needs to be migrated. The target for that migrated profile can be an existing profile or a new profile.

IBM Software Group IBM

Profile settings

- Profile name
- Migration backup
- Applications

Profile creation parameters

Enter a name for the new profile:

Host name:

Cell name:

Node name:

Migration backup directory

Enter the directory in which to store a backup of the configuration from the previous version. The directory is created if it does not already exist. If the directory exists, it should be empty because the backup operation may overwrite existing backup files.

The configuration of the previous version is not changed.

Backup directory:

Application migration settings

Select the directory in which to install the applications.

Keep the same application installation directories as the previous version. See the information center for restrictions on this option.

Install the applications in the default directory of the target version.

Install the applications in the directory below.

Warning: Application installation directories should not be deleted before applications are uninstalled.

5

System migration © 2008 IBM Corporation

If create a new profile was selected then a profile name must be entered. A different host name can be specified to create this profile on a different system. It is always best to specify a backup directory if a rollback needs to occur. The application migration settings allows the applications to be installed in the directory as specified.

IBM Software Group IBM

Migration settings

- Port assignment
- Scripts
- Summary

Port value assignment

By default, the port values are migrated from the source profile. However, you can choose to use the port values assigned during creation of the target profile or define a block of port values that start at a specified port number.

Use the port values assigned to the previous (source) installation.
 Use the port values assigned to the target profile.
 Define a block of port values starting at:

Additional migration options

Migrate to support script compatibility.

Use this option to help ensure your existing administration scripts work in Version 6.1. Object types from previous versions are migrated into the new configuration. Administration script changes may still be necessary after the migration process is complete.

Migration summary

Verify the accuracy of the following summary information:

	Source	Target
Version	IBM WebSphere Process Server, Version 6.0.2.0	6.1.0.0
Profile	ProcSrv01	StandAlone602
Directory	C:\WebSphere\ProcServer602	C:\WebSphere\ProcServer

The following migration options were selected:

Backup directory	c:\websphere\backup
Application migration choice	Migrate and install the applications.
Port selection	Default
Script compatibility	Yes

Click **Next** to begin the migration process.

6

System migration © 2008 IBM Corporation

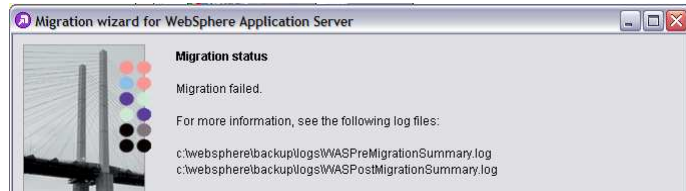
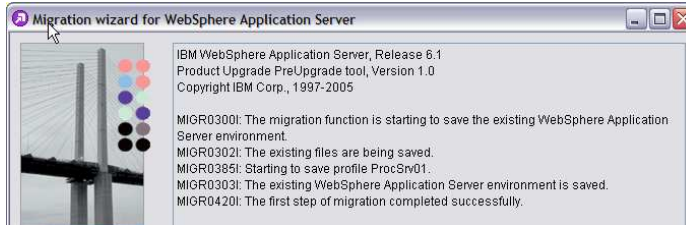
The port assignments allow the use of the previous assignments. This can cause a conflict if servers have been previously created for this system. If migrating to an existing profile then use the assigned values or specify a starting point for a block in a range that is not used.

The scripts that were created for V6.0 can be migrated to be compatible to V6.1. A summary screen is presented before accepting these settings and clicking next to begin the migration.

Migration tools

- PreUpgrade
- PostUpgrade

- Migration logs



com.ibm.ws.migration.utility.UpgradeException: MIGR0319E: This node is already federated into a cell manager configuration.



As the migration progresses, a status of the process is displayed. The WBIPreUpgrade and WBIPostUpgrade scripts will run during the migration process. A final status panel will indicate if the migration was successful. If there are problems then refer to the migration logs for problem determination.

Feedback

Your feedback is valuable

You can help improve the quality of IBM Education Assistant content to better meet your needs by providing feedback.

- Did you find this module useful?
- Did it help you solve a problem or answer a question?
- Do you have suggestions for improvements?

Click to send e-mail feedback:

mailto:iea@us.ibm.com?subject=Feedback_about_WBIV61_WESBWPS_ProfileMigration.ppt

This module is also available in PDF format at: ..\\WBIV61_WESBWPS_ProfileMigration.pdf



You can help improve the quality of IBM Education Assistant content by providing feedback.

Trademarks, copyrights, and disclaimers

The following terms are trademarks or registered trademarks of International Business Machines Corporation in the United States, other countries, or both:

Cloudscape IBM WebSphere

Product data has been reviewed for accuracy as of the date of initial publication. Product data is subject to change without notice. This document could include technical inaccuracies or typographical errors. IBM may make improvements or changes in the products or programs described herein at any time without notice. Any statements regarding IBM's future direction and intent are subject to change or withdrawal without notice, and represent goals and objectives only. References in this document to IBM products, programs, or services does not imply that IBM intends to make such products, programs or services available in all countries in which IBM operates or does business. Any reference to an IBM Program Product in this document is not intended to state or imply that only that program product may be used. Any functionally equivalent program, that does not infringe IBM's intellectual property rights, may be used instead.

Information is provided "AS IS" without warranty of any kind. THE INFORMATION PROVIDED IN THIS DOCUMENT IS DISTRIBUTED "AS IS" WITHOUT ANY WARRANTY, EITHER EXPRESS OR IMPLIED. IBM EXPRESSLY DISCLAIMS ANY WARRANTIES OF MERCHANTABILITY, FITNESS FOR A PARTICULAR PURPOSE OR NON-INFRINGEMENT. IBM shall have no responsibility to update this information. IBM products are warranted, if at all, according to the terms and conditions of the agreements (for example, IBM Customer Agreement, Statement of Limited Warranty, International Program License Agreement, etc.) under which they are provided. Information concerning non-IBM products was obtained from the suppliers of those products, their published announcements or other publicly available sources. IBM has not tested those products in connection with this publication and cannot confirm the accuracy of performance, compatibility or any other claims related to non-IBM products.

IBM makes no representations or warranties, express or implied, regarding non-IBM products and services.

The provision of the information contained herein is not intended to, and does not, grant any right or license under any IBM patents or copyrights. Inquiries regarding patent or copyright licenses should be made, in writing, to:

IBM Director of Licensing
IBM Corporation
North Castle Drive
Armonk, NY 10504-1785
U.S.A.

Performance is based on measurements and projections using standard IBM benchmarks in a controlled environment. All customer examples described are presented as illustrations of how those customers have used IBM products and the results they may have achieved. The actual throughput or performance that any user will experience will vary depending upon considerations such as the amount of multiprogramming in the user's job stream, the I/O configuration, the storage configuration, and the workload processed. Therefore, no assurance can be given that an individual user will achieve throughput or performance improvements equivalent to the ratios stated here.

© Copyright International Business Machines Corporation 2008. All rights reserved.

Note to U.S. Government Users - Documentation related to restricted rights-Use, duplication or disclosure is subject to restrictions set forth in GSA ADP Schedule Contract and IBM Corp.

