



IBM Software Group

# WebSphere® Integration Developer V6.1

## *IBM Installation Manager*



@business on demand.

© 2008 IBM Corporation  
Updated March 12, 2008

This presentation provides an overview of the IBM Installation Manager from the perspective of WebSphere Integration Developer V6.1.

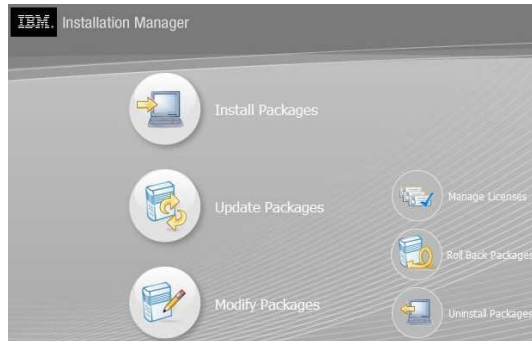
## Goal and agenda

- Outline IBM Installation Manager from the WebSphere Integration Developer V6.1 perspective
  - ▶ Overview
  - ▶ Terminology
  - ▶ Functions
  - ▶ Organization
  - ▶ Similarities and differences with V6.0.2
  - ▶ Menu options
  - ▶ Troubleshooting

The goal for this presentation is to outline IBM Installation Manager from the WebSphere Integration Developer V6.1 perspective. This presentation first provides a small summary overview of what the IBM Installation Manager is and the new terminology that comes along with this new technology. The functions and organization of the IBM Installation Manager are also outlined, along with the similarities and differences with the version 6.0.2 product. Then this presentation finishes with a few limitations to understand and troubleshooting techniques to use if there ever is a problem.

## Overview

- New for WebSphere Integration Developer V6.1
- Installation management tool for 6.1 WebSphere Business Integration tools and runtime
  - ▶ One place to update both WebSphere Integration Developer and WebSphere Process Server
- Replaces Rational® Product Updater for tools and Update Installer for runtime from V6.0.2
- May have seen in Rational V7 products
- Eclipse based



IBM Installation Manager is an installation management tool that simplifies the process of downloading and updating code for trial or licensed versions for all WebSphere Business Integration V6.1 development software. It replaces the Rational Product Updater for the development environments and replaces the Update Installer for the version of WebSphere Process Server that comes with WebSphere Integration Developer as the integrated WebSphere test environment. The IBM Installation Manager is introduced with the V7 of Rational development software, which is the basis for all of the development tools in the WebSphere Business Integration family of products beginning with Version 6.1. IBM Installation Manager is Eclipse based, as is WebSphere Integration Developer.

## Terminology

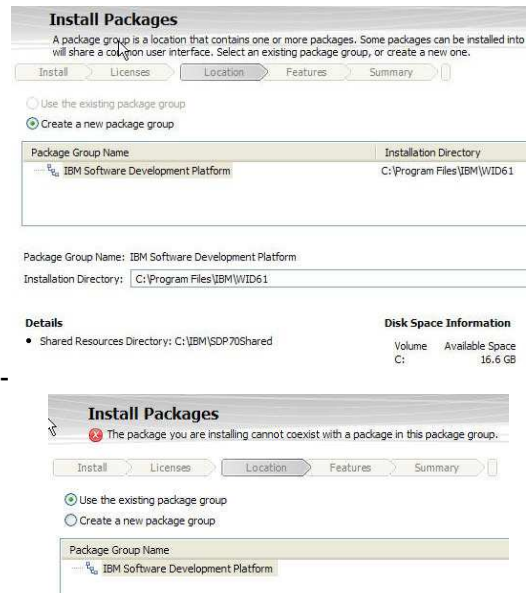
- **Plug-ins**
  - ▶ Reusable pieces of software focused on a certain task
- **Features**
  - ▶ Collection of plug-ins focused on a broader task
- **Packages**
  - ▶ Collection of features focused on a job task
  - ▶ Also called an offering



With new technology comes new terminology. The next two slides aim at answering any new terminology questions with IBM Installation Manager. Plug-ins make up the basis of the Eclipse based framework and are reusable pieces of software focused on a certain task. “Features” is a new term for V6.1 and can be best described as a group of plug-ins or technologies that focus on achieving one or a small number of tasks. As seen in the screen capture, the WebSphere Integration Developer package is made up of the features Integrated Development Workbench, IBM WebSphere Adapters, and Portal tools. A package further increases the scope as a collection of features that together create a software product. Therefore, a package is product, but can also be referred to as an offering. WebSphere Integration Developer is a package and IBM Installation Manager is a package, as seen in the bottom right screen capture on this page. The package contains not only the files to be installed, but also all the auxiliary information dictating the installation options exposed.

## Terminology

- Package groups
  - ▶ Group multiple packages into one manageable package group
  - ▶ Do not have to shell share
- Shell sharing
  - ▶ Much better story in V6.1
  - ▶ Product features of multiple participating products in same workspace
  - ▶ Packages / Package groups can share Eclipse and non-Eclipse plug-ins regardless of shell sharing
    - Avoid any duplication and keep hard-drive footprint low
    - Contained in shared resources directory
    - Highest level of plug-in used as long as dependencies tolerate, regardless of contribution



Package Groups provide a top-level scope to allow grouping multiple packages into one manageable package. An example of this might be putting WebSphere Integration Developer and IBM Rational Application Developer into one package group and then a different version of WebSphere Integration Developer into another package group. In the top right screen capture, you see the prompt for creating a new package group or using an existing package group to install the current package into. The second screen capture shows how IBM Installation Manager knows when package groups do not participate. Each packaged group can be maintained individually or take part in shell sharing. Shell sharing refers to product features of multiple participating products in same workspace. Therefore, when a package group is launched, all of the options, perspectives, and editors of all products that are shell sharing are available in one workspace. Shell Sharing is used to have multiple products feel like one and can reduce the file system storage space requirement. Therefore, instead of duplicating plug-ins they are shared among the participating packages or package groups. The shared resources directory also plays a part in avoiding any duplication of plug-ins. It is one shared directory for all the Eclipse based plug-ins that are shared, or that can be shared, between participating software packages. Packages can share plug-ins regardless of shell sharing. The highest level of plug-in is used as long as dependencies tolerate, regardless of contribution.

## Functions

- Install Packages
  - ▶ Install packages into new or existing package groups
- Update Packages
  - ▶ Search and install updates or fixes for installed packages
- Modify Packages
  - ▶ Add or Remove features from a package group after install
- Manage Licenses
  - ▶ Configure license support
- Roll Back Packages
  - ▶ Uninstall updates and fixes
- Uninstall Packages
  - ▶ Uninstall products



For clarity sake, this slide will verify what functions the IBM Installation Manager is capable of. Click "Install Packages" to install packages into new or existing package groups. Update Packages will search and install updates or fixes for installed packages. There is a "Check for Other Versions and Extensions" button during package installation that searches for latest updates when installing the product. This allows you install the base package and any latest enhancements or fixes at installation time so that you do not have to remember to come back to the Update Packages function after installation. The Modify Packages option allows adding or removing features from a package group after installation. This is important for uninstalling unneeded or failing features. Manage Licenses configures license support. The Roll Back Packages option uninstalls updates and fixes, but not the package. This has become more granular and is important for testing new fixes and uninstalling the fixes if the fixes actually cause problems elsewhere. The Uninstall Packages option uninstalls the products and their associated features or plug-ins.

## How it works

- Self-installs before first package
- Updates itself if a previous version of Installation Manager is installed
- Repository.config files
  - ▶ Read in order to put together install packages
  - ▶ Files found in extracted install files or on CD
    - Example: disk1/IM\_win32, disk1/IMwid61, disk1/IMwps61



Installing a product or package that uses IBM Installation Manager will self-install the IBM Installation Manager before installing the first package. This is a quick installation of the IBM Installation Manager package, which also updates itself to the latest version if needed, even if a previous version of the Installation Manager is installed on the machine. The IBM Installation Manager looks for repository.config files and uses those files to put together installation packages by reading the metadata. These files are found in extracted installation files or on CD; some examples are shown here. So the IBM Installation Manager installs itself and updates itself, then uses repository.config files to understand what else needs to be installed.

## File organization

- Two directories
  - ▶ Data directory
    - Example: C:\Documents and Settings\All Users\Application Data\IBM\Installation Manager
  - ▶ Working directory
    - Example: C:\IBM\Installation Manager\
- Installation logs
  - ▶ IBM Installation Manager logs
    - Example: C:\Documents and Settings\All Users\Application Data\IBM\Installation Manager\logs
  - ▶ For test clients
    - Example: C:\Documents and Settings\All Users\Application Data\IBM\Installation Manager\logs\native
- Installation Manager = 130 Mb
- More organized file system
  - ▶ \wstools directory from 6.0.2
    - Now in shared resources directory
    - Example: C:\IBM\SDP70Shared
  - ▶ \wid\_prod and \eclipse directories from 6.0.2
    - Now in package group directory
    - Example: C:\IBM\WID61

IBM Installation Manager is made up of two directories. The data directory holds things like logs, metadata, settings, installed products list, and the `uninstall.exe` for IBM Installation Manager. Example locations for all of these directories are provided on the slide. The working directory holds things like license, Eclipse files, and the launcher application called `IBMIM.exe`. The IBM Installation Manager installation logs can be found in the data directory under the logs folder. For WebSphere Process Server and WebSphere Enterprise Service Bus test clients installation logs, look again under the data directory but under `logs/native`. The IBM Installation Manager is approximately 130 Mb in total size and employs a more organized file system than the V6.0.2 product. If you were used to opening the `\wstools` directory from 6.0.2, the new location for those files is the shared resources directory, or `SDP70Shared` by default. If you were used to opening the `\wid_prod` and `\eclipse` directories from 6.0.2, they are now combined into the package group directory, or the `\WID61` directory by default.



## Differences

### ■ Similarities and differences from 6.0.2

#### ▶ Rational Product Updater for tools

##### ■ Similar

- Update/rollback product just like Rational Product Updater

##### ■ Difference

- No separate tool for updating tools and runtime
- Able to install, uninstall, modify, update, rollback, and manage licenses
- No separate optional features tab
  - Now part of Features section of IBM Installation Manager Install packages wizard

#### ▶ Update Installer for runtime

##### ■ Similar

- Installs and uninstalls maintenance packages (.pak files)

##### ■ Difference

- Able to manage all of server product with Installation Manager
  - Not just install/uninstall of updates
- No separate tool to use for installing/uninstalling maintenance

IBM Installation Manager is the follow on product to the Rational Product Updater and behaves very much like it. You can update or rollback a product just like with the Rational Product Updater, but now you can use one product for updating both tools and runtime. Not only are you able to handle both tools and runtime, you can also install, uninstall, modify, and manage licenses from this one product. Another difference is that there is no "optional features" tab in the IBM Installation Manager. Optional features are now part of the features section of the IBM Installation Manager Install packages wizard.

For the runtime, Update Installer was used in V6.0.2. IBM Installation Manager installs and uninstalls maintenance packages (.pak files) just like Update Installer. However now you are able to manage all of the server product installation and uninstallation with IBM Installation Manager.

## Product menu

- Product menu options

- ▶ Open IBM Installation Manager

- Example: Calls <Install Location>\Installation Manager\eclipse\IBMIM.exe

- ▶ Release notes

- ▶ Uninstall IBM Installation Manager

- Example: Calls C:\Documents and Settings\All Users\Application Data\IBM\Installation Manager\uninstall\uninstall.exe

- ▶ View installed packages

- Example: Calls C:\Documents and Settings\All Users\Application Data\IBM\Installation Manager\installed.xml



From the product menu, as in Start -> Programs for Windows, you will see four options. You can open IBM Installation Manager, view Release Notes, uninstall IBM Installation Manager, and view installed packages. Example locations are shown here.

# Installed.xml

## IBM Installation Manager - Installed Offerings

### IBM® Installation Manager V 1.1 (1.1.0.20070919\_2257)

Installation Location: C:\IBM\Installation Manager\ eclipse

### Package Group Name: IBM Software Development Platform

Package Group Location: C:\IBM\WID61

Packages	Features
<p>IBM® WebSphere® Integration Developer V 6.1.0.0 (6.1.0.0_20071025_1228)</p> <p>Fixes</p>	<ul style="list-style-type: none"> <li>• Rational® ClearCase® SCM Adapter</li> <li>• Data tools</li> <li>• JET Extensibility</li> <li>• J2EE Connector (J2C) tools</li> <li>• J2EE and Web services development tools</li> <li>• IBM® JRE 1.5.0</li> <li>• Java™ client application editor (JVE)</li> <li>• Plug-in Development Environment (PDE)</li> <li>• Portal tools</li> <li>• Test and Performance Tools Platform (TPTP)</li> <li>• WebSphere® Application Server compile-time dependencies</li> <li>• WebSphere® Application Server development tools</li> <li>• Web Development Tools</li> <li>• Transformation authoring</li> <li>• Integrated Development Workbench</li> </ul>
<p>IBM® WebSphere® Process Server Test Environment V 6.1.0.0 (6.1.0.0_20071025_1228)</p>	<ul style="list-style-type: none"> <li>• IBM® WebSphere® Process Server test environment</li> <li>• IBM WebSphere Enterprise Service Bus profile</li> <li>• IBM WebSphere Process Server profile</li> </ul>

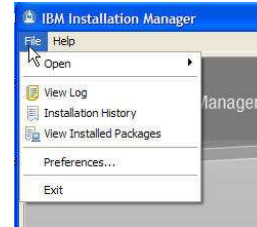
11

The “View Installed Packages” option, which reads from the file installed.xml, is a quick way to see locations and details of installed package groups and packages, what features and fixes are installed, and the version numbers of IBM Installation Manager and packages that are installed. This is important to know and use when debugging a problem with the installed packages, or when working with IBM support.

## File options

### File menu options

- ▶ Open > [GUI Options]
  - Install, Update, Modify, License, Rollback, Uninstall
- ▶ View install log
  - View and export installation log
- ▶ Installation history
  - Easy to read chart



#### Installation History

Installation history

Date	Activity	Package Group Name	Status	Installation Packages
2007-10-29T10:04:48-04:00	Install	IBM Software Development Platform	Success	IBM® WebSphere® Integration Developer_6.1.0
2007-10-29T10:04:48-04:00	Install	IBM Software Development Platform	Success	IBM® WebSphere® Process Server Test Environ
2007-10-29T10:03:31-04:00	Install	IBM Installation Manager	Success	IBM® Installation Manager_1.1

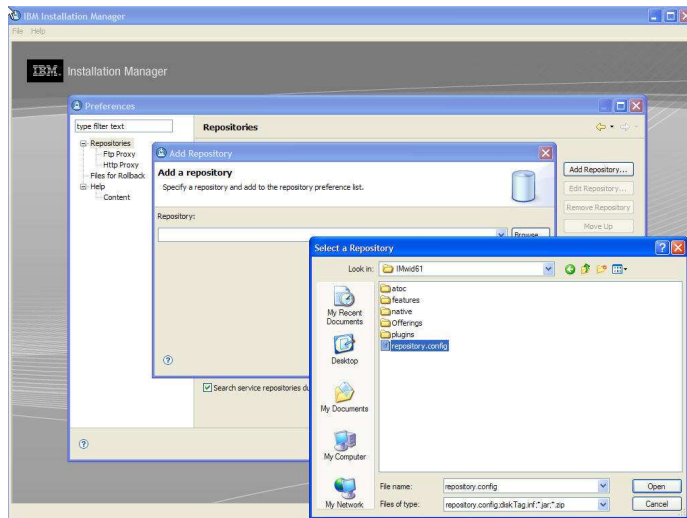
- ▶ View installed packages
  - For details of the packages
- ▶ Preferences...



When IBM Installation Manager is opened, the file options provide some similar options at the product menu. You can manually open the GUI options, as in install, update, modify, license, rollback, and uninstall. Here you can access and export the installation log for IBM Installation Manager. The installation history option is a useful, easy to read chart for seeing when a package group was installed and if it was successful. The “view installed packages” option is the same from the product menu and was discussed in the previous slide.

## Preferences

- Preferences
  - ▶ Repositories
    - Proxy
      - FTP and HTTP
    - ▶ Files for rollback
    - ▶ Help
  - Add repositories



13

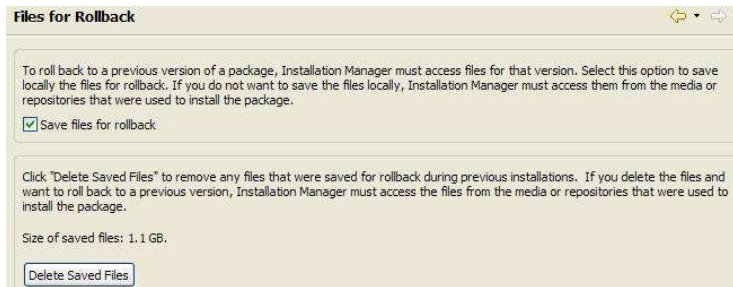
IBM Installation Manager

© 2008 IBM Corporation

There are several preference settings for IBM Installation Manager. The most used is the add repositories option. It allows you to manually point to repository.config files that IBM Installation Manager might have not been able to pick up automatically. Like Rational Product Updater, a company can have their own local or remote update site to make sure all of their developer's machines are at the same version. FTP and HTTP proxy options are available for firewall or security situations where updates need to be downloaded from outside of a secure area.

## Rollback options

- Rollback options
  - ▶ Save files on by default



When updating a package group, rollback information is saved in the case of a need to uninstall an update. By default, this information is saved to make rolling back, or uninstalling updates, easy. There is the option to delete rollback files, but it is not recommended.

## Troubleshooting

### ■ Problem determination

#### ▶ IBM Installation Manager cannot find repository.config files

- Use File -> Preferences -> Repositories -> Add Repositories
  - Repository.config files can be found in extracted install files or on CD
  - Example: in disk1/IM\_win32, disk1/IMwid61, disk1/IMwps61 folders

#### Install Packages

Installation Manager cannot find any packages to install. In order to access packages, you must configure a repository connection and ensure that you can access the media.

Check the following areas for problems:

- Repository connections: Packages are stored in repositories that you must connect to. Configure repository connections on the [Repositories](#) preference page.
- Proxy settings: Your work environment might require proxy settings to connect to repositories. Configure these settings on the [Proxy](#) preference page.
- Firewall and network access: Firewall settings and network access problems can affect your ability to view and select packages. Correct firewall settings and resolve system.

As you make corrections to your network access or repository preferences, click [Refresh](#) to read the settings again.



One situation that can arise is IBM Installation Manager not finding any repository.config files. In this case, use File -> Preferences -> Repositories -> Add Repositories or click on the Repositories link circled in yellow on the screen capture to manually add repository.config files so that IBM Installation Manager can read these files and manage the right repositories. The repository.config files for WebSphere Integration Developer can be found in extracted installation files or on CD. Look in the folders listed here to see the three needed repository.config files for WebSphere Integration Developer.

## Troubleshooting

- Problem determination
  - ▶ Any problems with installation of IBM Installation Manager or package groups
    - Check logs at C:\Documents and Settings\All Users\Application Data\IBM\Installation Manager\logs
      - Example: WebSphere Integration Developer installation fails

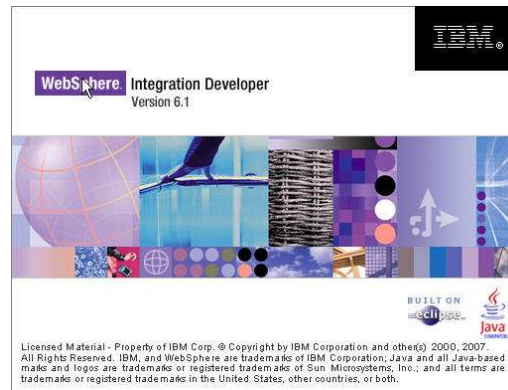


If there are any problems with installation of IBM Installation Manager or the package groups, check the logs in the data directory of the IBM Installation Manager. For example, if WebSphere Integration Developer installation fails and you need to find the cause.



## Summary

- Installation Manager
  - ▶ Installation management tool for 6.1 WebSphere Business Integration tools and runtime
  - ▶ Replaces Rational Product Updater for tools and Update Installer for runtime
  - ▶ Easier to manage Install, Uninstall, Update, Modify, Licenses, and Rollback
  - ▶ Started in Rational V7 products
  - ▶ Self-installs before first package
  - ▶ Uses repository.config files to coordinate package installation



In summary, IBM Installation Manager is the one, new installation management tool for version 6.1 WebSphere Business Integration tools and runtime. It replaces Rational Product Updater for tools and Update Installer for runtime products. The IBM Installation Manager can install and uninstall package groups, update itself or update package groups, modify features and packages, manage licenses, and rollback updates. IBM Installation Manager is available starting with Rational V7 products. It is small piece of software that self-installs before installing the first package and uses repository.config files to coordinate package installation.

## Feedback

### Your feedback is valuable

You can help improve the quality of IBM Education Assistant content to better meet your needs by providing feedback.

- Did you find this module useful?
- Did it help you solve a problem or answer a question?
- Do you have suggestions for improvements?

Click to send e-mail feedback:

[mailto:iea@us.ibm.com?subject=Feedback\\_about\\_WBIV61\\_WIDInstallationManager.ppt](mailto:iea@us.ibm.com?subject=Feedback_about_WBIV61_WIDInstallationManager.ppt)

This module is also available in PDF format at: [..WBIV61\\_WIDInstallationManager.pdf](..WBIV61_WIDInstallationManager.pdf)



You can help improve the quality of IBM Education Assistant content by providing feedback.

## Trademarks, copyrights, and disclaimers

The following terms are trademarks or registered trademarks of International Business Machines Corporation in the United States, other countries, or both:

IBM Rational WebSphere

Rational is a trademark of International Business Machines Corporation and Rational Software Corporation in the United States, Other Countries, or both.

Product data has been reviewed for accuracy as of the date of initial publication. Product data is subject to change without notice. This document could include technical inaccuracies or typographical errors. IBM may make improvements or changes in the products or programs described herein at any time without notice. Any statements regarding IBM's future direction and intent are subject to change or withdrawal without notice, and represent goals and objectives only. References in this document to IBM products, programs, or services does not imply that IBM intends to make such products, programs or services available in all countries in which IBM operates or does business. Any reference to an IBM Program Product in this document is not intended to state or imply that only that program product may be used. Any functionally equivalent program, that does not infringe IBM's intellectual property rights, may be used instead.

Information is provided "AS IS" without warranty of any kind. THE INFORMATION PROVIDED IN THIS DOCUMENT IS DISTRIBUTED "AS IS" WITHOUT ANY WARRANTY, EITHER EXPRESS OR IMPLIED. IBM EXPRESSLY DISCLAIMS ANY WARRANTIES OF MERCHANTABILITY, FITNESS FOR A PARTICULAR PURPOSE OR NON-INFRINGEMENT. IBM shall have no responsibility to update this information. IBM products are warranted, if at all, according to the terms and conditions of the agreements (for example, IBM Customer Agreement, Statement of Limited Warranty, International Program License Agreement, etc.) under which they are provided. Information concerning non-IBM products was obtained from the suppliers of those products, their published announcements or other publicly available sources. IBM has not tested those products in connection with this publication and cannot confirm the accuracy of performance, compatibility or any other claims related to non-IBM products.

IBM makes no representations or warranties, express or implied, regarding non-IBM products and services.

The provision of the information contained herein is not intended to, and does not, grant any right or license under any IBM patents or copyrights. Inquiries regarding patent or copyright licenses should be made, in writing, to:

IBM Director of Licensing  
IBM Corporation  
North Castle Drive  
Armonk, NY 10504-1785  
U.S.A.

Performance is based on measurements and projections using standard IBM benchmarks in a controlled environment. All customer examples described are presented as illustrations of how those customers have used IBM products and the results they may have achieved. The actual throughput or performance that any user will experience will vary depending upon considerations such as the amount of multiprogramming in the user's job stream, the I/O configuration, the storage configuration, and the workload processed. Therefore, no assurance can be given that an individual user will achieve throughput or performance improvements equivalent to the ratios stated here.

© Copyright International Business Machines Corporation 2008. All rights reserved.

Note to U.S. Government Users - Documentation related to restricted rights-Use, duplication or disclosure is subject to restrictions set forth in GSA ADP Schedule Contract and IBM Corp.