



IBM Software Group

## WebSphere Business Process Management Suite V6.2

### *Getting started with business space*



@business on demand.

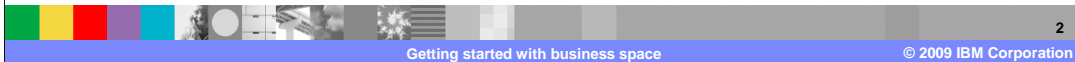
© 2009 IBM Corporation  
Updated February 12, 2009

This presentation provides information on how to get started with the new business space feature in the BPM V6.2 portfolio.

If you have not already reviewed the business space overview, please do so before proceeding with this presentation.

## Goal

- Goal of this presentation
  - ▶ Help you get started using the business space, whatever product your working with
  - ▶ Show some samples of business space
- You will learn:
  - ▶ How to get started with business space
  - ▶ Log into business space
  - ▶ Create and manage business space, pages within a space
  - ▶ User access and sharing of space and page



The goal of this presentation is to show how you can get started with the business space environment.

The information presented here applies to the business space component across all the BPM V6.2 products. Each of the BPM products will dive into the details of their product specific business space widgets and how to use them.

The presentation closes with some samples of the Business Space user interface.

## Business space

- New, ready-to-run Web 2.0 BPM client for business users
- Provides a single, rich, holistic user experience
- Unifying front end for IBM's BPM products to access business related data
- Web browser based
- Blurs the distinction between business and IT
- Not a separate product



The business space component is the new, ready to use Web 2.0 BPM client for business users.

The business space unifies the business process management user interface space for business users.

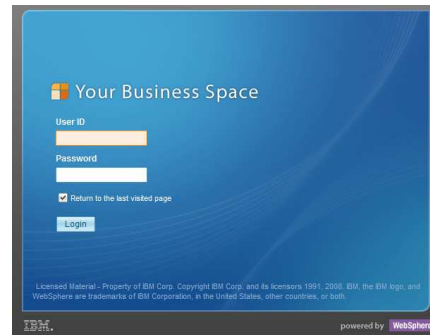
This allows business users to work in a single window for all their business activities across the different BPM products in the suite.

Business space is a mash-up of BPM widgets targeted for a business user.

Business space is not a separate product, but a component used by several of the BPM products.

## Logging into business space

- URL:  
<http://<host:port>/BusinessSpace>



- Alternatively, from within the WebSphere Integration Developer for the unit test environment



Use the URL shown here to access the login page for the WebSphere Business Space. You can also access the business space using the menu option in WebSphere Integration Developer. It is located off the menu for the test server.

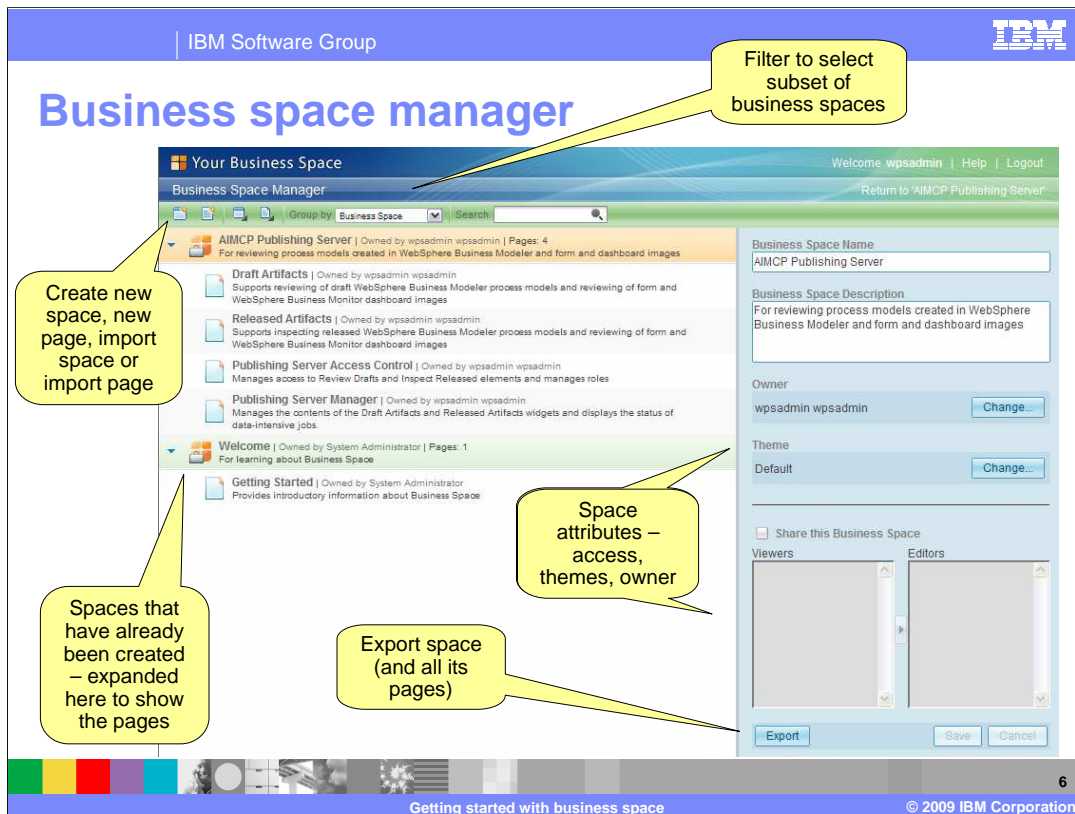
## Logging in for the first time

The screenshot shows the IBM Business Space interface. At the top, it says "Your Business Space" and "Welcome Tom | Help | Logout". A red circle highlights the "Manage Business Spaces" link in the top right. A yellow callout bubble labeled "Demonstrations" points to four video thumbnails in the center. The thumbnails are titled "Open a space", "Tour Business Space", "Create a space", and "Get help". A right-hand sidebar lists "More Business Space Help Topics" including Concepts and Scenarios. The footer contains the text "Getting started with business space" and "© 2009 IBM Corporation".

It is all here. Everything you need to know. The getting started with Business Space is presented to every new user the first time they log into a business space server. It is an excellent, quick reference to the business space capabilities. It is available from the Welcome Business Space, the help menu item in the title bar or as link you can bookmark and use at any time. The external link into the information center is provided at the end of this presentation.

Before leaving this page, notice that the images in the center are links to short demonstrations.

When you are ready to get started, go to the Business Manager by selecting the toolbar option on the upper right.



The business spaces are personal. They are yours to create and share with others. You, as the business user create a business space and manage the access rights for the users.

You can have as many business spaces as you need or want. The business space manager view is where you create you business spaces and specify who can see and contribute to them. You can see from the screen capture, that a business space is composed of one or more pages. The currently selected business space is highlighted in orange. The area on the right is where you can manage the currently selected item, be it a business space or a business space page. You can change the name, add a description, change the owner, change the visual theme, and manage the user privileges.

Starting from the upper left, you will see the toolbar that provides the functions for creating new spaces and pages and for importing business spaces and pages.

IBM Software Group IBM

## Sharing business spaces

- Users must be defined in the underlying WebSphere Application Server or Process Server user registry
  - WebSphere administrative console

Business Space Name: AIMCP Publishing Server

Business Space Description: For reviewing process models created in WebSphere Business Modeler and form and dashboard images

Owner: wpsadmin wpsadmin Change...

Theme: Default Change...

Share this Business Space

Viewers: Jeff Stratford

Editors:

Search results: Jeff Stratford, Tom Thumb, wpsadmin wpsadmin

Buttons: Export, Save, Cancel

7

Getting started with business space © 2009 IBM Corporation

The users and groups are defined in the underlying user registry used by the WebSphere Process Server.

Once the users have been defined there, they will become available for use in the business space environment.

To start sharing a business space; first select the business space you want to work with in the business space manager.

Note; the title of the business space is a link that will open the business space. Unless you wish to go into the business space, select the row, anywhere but the link.

With the business space selected, all of the administrative functions on the right become available.

First you will need to select the check box to share the business space.

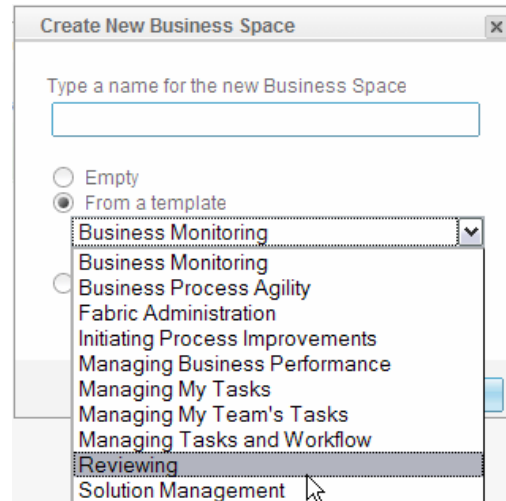
Next you select the little down arrow next to the Viewers or Editors. This will pop up the search dialog that will let you select the users you want to add. You can choose more than one person at a time; it is a multiple select list.

Remember to click Save when you are done.

You can set the viewers and editors for the entire workspace or you can set them for individual pages if you need to.

## Creating a business space

- Create a complete business space in one shot
  - ▶ By using a template
- Build it a page at a time
  - ▶ Adding just the widgets you need, where you want them.
- Start with a template and extend it.
  - ▶ Create a business space from a template and add pages as you need them
- Turn your custom business space into a template
  - ▶ Requires superuser access



Until you become more familiar with the business space concepts and widgets, you will probably find using the predefined templates to be a very good way to get started. Each template will define a set of pages with the appropriate widgets for a specific task that you will need to do.

The templates are related to the BPM products that have been installed, therefore depending on your installation, you may not see all of them.



## New business space from templates

- Product space templates

Space template name	BPM product
Reviewing	WebSphere Business Modeler Publishing Server
Business Monitoring	WebSphere Business Monitor
Human Workflow	WebSphere Process Server

- Advanced cross product space templates

Space template name	BPM product
Objectives Management	WebSphere Business Monitor, WebSphere Process Server, WebSphere Business Service Fabric
Monitoring Human Workflow	WebSphere Business Monitor, WebSphere Process Server
Supervising Human Workflow	WebSphere Business Monitor, WebSphere Process Server
Initiating Business Change	WebSphere Business Monitor, WebSphere Process Server, WebSphere Business Modeler Publishing Server

There are two types of templates to create predefined business spaces. There are product centric templates which provide a product perspective and then there are the scenario based templates which provide a perspective that spans the various products.

In the product centric category there are three templates.

There is a template for Business Monitor that exposes the pages and widgets targeted for a Business Monitor dashboard user.

Another template, called Reviewing, provides all the widgets needed to manage and review published business models.

Yet another one, called Human Workflow, comes with the WebSphere Process Server. This template provides the basic widgets for managing human centric workflows. If you are already experienced with business process choreographer, you will find these widgets very familiar.

The other type of templates is advanced templates to create business spaces that span the product boundaries and provide the widgets for the specific roles performed by business users. There is an Objectives Management template for business leaders, Initiating Business Change template for business analysts, Supervising Human Workflow template for business supervisors and a Monitoring Human Workflow template for business workers.

## Export, import

- Export a business space or page:
  - ▶ Allows others to create their own copy of your business space or page
  - ▶ Exporting a business space contains all the pages within that business space
  - ▶ A business space or page is saved to a file that can be imported by others using the import function
- Import a business space or page
  - ▶ Allows you to import business space or page from an exported business space or page.



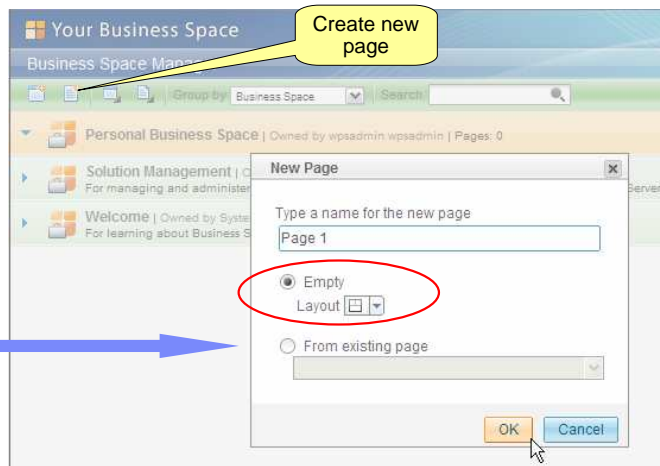
You can import or export either the entire business space or a specific page within a business space.

Exporting a business space allows others to create their own copy of the business space, rather than sharing the space. When exporting the business space, all the pages in that business space are included in the exported file. The exported file can then be imported by other users who want to make a copy of your business space.

Exporting and importing pages works in the same way, except only the page content is contained in the exported file.

## Creating new page within a space

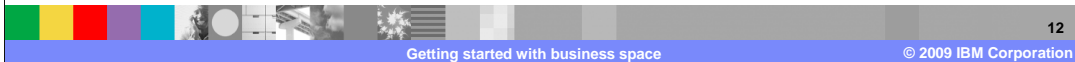
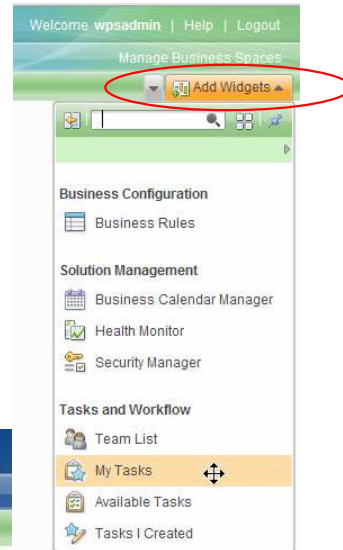
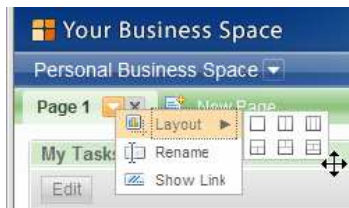
- Can define a new page from scratch and specify the layout
- Or, for a space built from pre-defined template, you can start from an existing page



After you have created your business space the next step is to add some pages. Notice that in the example shown here the newly created business space has zero pages. You will have to have at least one page created before you can open your business space. You can create pages directly from the business space manager and you will be able to create additional pages once you open your business space.

## Adding widgets

- Opening your new page, you will be presented with a blank page
- The next step is to add some widgets
- The widgets available in the list will depend on the BPM products that you have installed.
  - ▶ The *Solution Management* widgets are part of the base WebSphere Process Server installation.
  - ▶ The *Task and Workflow* widgets are part of the business process choreographer installation
- Change the layout any time



To add a widget to your page, open the widget palette at the right end of the toolbar.

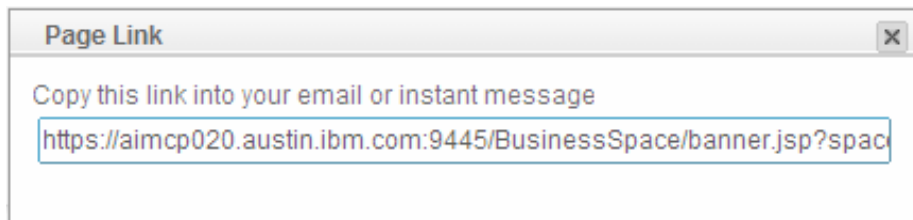
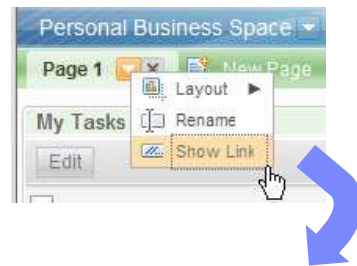
The widgets displayed in the list will depend on the BPM product that has been installed.

Then just drag the widget and drop it to the blank page. As you move the object across the blank page, visual indicators will be displayed to help you place the widget in the proper section of the predefined layout.

You will still be able to change your page layout at a later time if you need to.

## Show link

- New with V6.2
  - ▶ A direct link to a specific page within your business space
  - ▶ User must have access authorization



The show link menu item will display the link to the page so that you can copy it and share it with someone else.

The person you share the link with must have the proper authorization to view or edit the page.

The link will take them directly to the page, avoiding whatever navigation may be required otherwise.

## Widget palette

- Shows a list of available widgets based on widgets registered with the Business Space
- Filterable by search term - searches across all widget details including name, description, category, and owner



Provides widget details and preview image in a “pop-out” panel

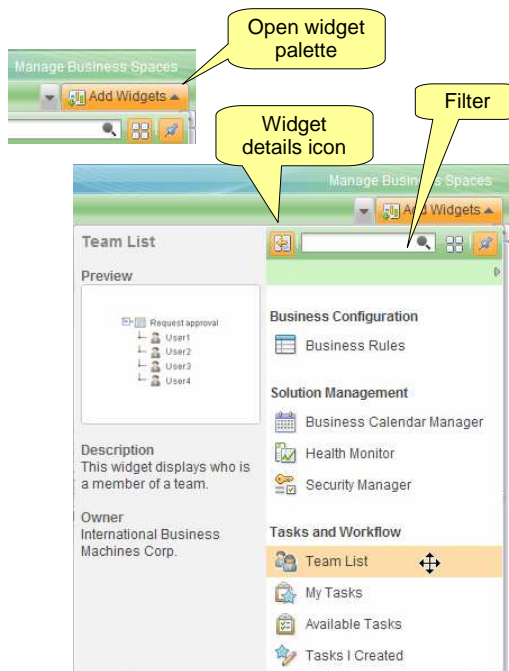


Pin the palette to allow multiple drag operations



Switch between list or icons view

- Widgets can be dragged from the palette onto the canvas



The widget palette can be accessed by selecting the “add widgets” icon on the right end of the toolbar.

You will see all the widgets for all the products that have been installed on this server and those that were registered from external servers.

You can enter a search term which is handy if you have a long list of widgets. The text that you enter is searched across all of the details of the widgets including name, description, category, and owner.

You can get detailed information about the widgets by selecting the details button. Shown here are the details for the team list widget.

You can click the details button again to remove the pop out.

From the palette, you can drag widgets onto a page. If you have multiple drag operations to perform, then you can pin the palette so that the palette will not close after each drag operation.

There is also a button to switch the display between list or icon view. In this sample you see the list view with the details pop-out displayed.

## User access control

- Business spaces and pages have separate access lists that contain users and groups
- Users and groups can have view or edit access to a business space or page
  - ▶ Access to a business space will give that user or group access to all pages within the business space
  - ▶ To restrict users to specific pages, do not give them access to the business space, just give them access to the pages you want them to see
- Business space and page ownership:
  - ▶ Any user can create a business space
  - ▶ A user who creates a business space or page immediately becomes its owner
  - ▶ Owners implicitly have edit access, plus extra privileges
- Note: Data access control is independent of business space and page access control. It is left up to each widget to manage its user access to data it provides
  - ▶ This feature is used with the WebSphere Business Modeler Publishing Server

15

Getting started with business space

© 2009 IBM Corporation

There is a separate access list for each business space and page. User privileges can be restricted to specific pages if that is what you need to do.

A user or group can have view or edit privileges.

To restrict a user or group to certain pages, do not grant them privileges to the business space, but only the pages you want them to use.

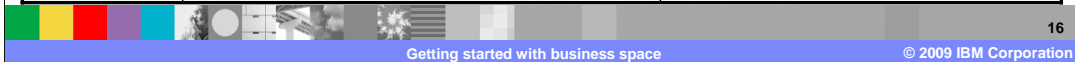
A user will only be aware of the pages that they have access to. The pages that they do not have access to, are not listed in the business space manager.

When you create a business space or page, you become its owner so you have the ability to edit it, assign privileges and even to delete it.

Note that the access to the data is independent of this access list; therefore the widgets need to manage their own access list for data security.

## User access rights

Role	Business space rights	Page rights
<b>Viewer</b>	<ul style="list-style-type: none"> <li>▪ Can view space.</li> <li>▪ Can view space properties.</li> <li>▪ Can browse accessible pages in space.</li> </ul>	<ul style="list-style-type: none"> <li>▪ Can view page.</li> <li>▪ Can view page properties.</li> <li>▪ No palette available.</li> </ul>
<b>Editor</b>	<ul style="list-style-type: none"> <li>▪ All of space viewer rights above, plus:</li> <li>▪ Can create pages.</li> <li>▪ Can edit business space properties</li> </ul>	<ul style="list-style-type: none"> <li>▪ All of page viewer rights above. Plus</li> <li>▪ Can edit page (add and remove widgets, change layout)</li> <li>▪ Can configure widgets on page</li> <li>▪ Can edit page properties.</li> <li>▪ Palette available.</li> </ul>
<b>Owner</b>	<ul style="list-style-type: none"> <li>▪ All of space editor rights above, plus:</li> <li>▪ Can share a space (grant access)</li> <li>▪ Can delete a space.</li> </ul>	<ul style="list-style-type: none"> <li>▪ All of page editor rights above. Plus</li> <li>▪ Can share page (grant access)</li> <li>▪ Can delete page.</li> </ul>
<b>Super-user</b>	<ul style="list-style-type: none"> <li>▪ All of the space owner rights above, plus:</li> <li>▪ Can change owner.</li> <li>▪ No access control restrictions.</li> </ul>	<ul style="list-style-type: none"> <li>▪ All of page owner rights above. Plus</li> <li>▪ Can change owner.</li> <li>▪ No access control restrictions.</li> <li>▪ Create and manage templates</li> </ul>



This table lists the access rights by privilege for both business spaces and pages.

A viewer can view information but not edit information.

An editor can edit spaces, pages, and properties.

An owner can perform functions such as edit, share, and delete.

The super user has all the rights of the owner, and additionally can change the owner for a business space or page.

The super user can view and work with all of the business spaces and can create and manage customized business space templates.



IBM Software Group IBM

## Sample – publishing server

Review published process models

Explore process models

Add comments to process model

Getting started with business space © 2009 IBM Corporation

Here is an example of a publishing server business space for the WebSphere Business Modeler Publishing Server. It was created using the 'reviewing' template.

On this page there are three widgets, the draft artifacts, the layout and the comments widgets.

The draft artifacts widget provides the basic navigation functions needed to locate a given business process or process element.

Once the business process has been selected the layout widget can be used to explore further. With the layout widget you can zoom in and out, and pan around the diagram. You can also select and inspect individual elements.

Since this is a draft model that is still under review, you can browse the existing comments and add your own.

## Section

# *Browser requirements*



The next section covers the browser requirements for business space.

## Browser requirements for V6.2

- **WebSphere Business Monitor**
  - ▶ Microsoft® Internet Explorer® Version 6.0 or 7.0
    - with the Adobe® SVG Viewer Version 3.0.3 browser plug-in.
    - Version 7.0 is recommended for improved performance and security
- **All other BPM product widgets**
  - ▶ Microsoft Internet Explorer Version 6.0 or 7.0
    - Version 7.0 is recommended for improved performance and security
  - ▶ Mozilla Firefox 2.0 or 3.0 or higher
    - Version 3.0 or higher is recommended
  - ▶ Adobe Flash Player 9 or 10
    - Used for browsing models in
      - WebSphere Business Modeler Publishing Server
      - The WebSphere Business Modeler, interactive process design



Most of the widgets work fine with Internet Explorer or Mozilla Firefox browsers, with a few exceptions.

WebSphere Business Monitor cannot be used with Mozilla Firefox.

And then there are some slight differences between the plug-ins used to view diagrams and pictures. WebSphere Business Monitor uses

the Adobe SVG viewer and the WebSphere Business Modeler Publishing Server and WebSphere Business Modeler require the Adobe Flash player.

## Business space information center

[http://publib.boulder.ibm.com/infocenter/dmndhelp/v6r2mx/index.jsp?topic=/com.ibm.bspace.620.help.framework.doc/getting\\_started\\_help/index.html](http://publib.boulder.ibm.com/infocenter/dmndhelp/v6r2mx/index.jsp?topic=/com.ibm.bspace.620.help.framework.doc/getting_started_help/index.html)

Business Space powered by WebSphere

### Welcome to Business Space

#### Open a space

Open an existing space to view and interact with information from multiple sources



#### Tour Business Space

See the features of Business Space powered by WebSphere



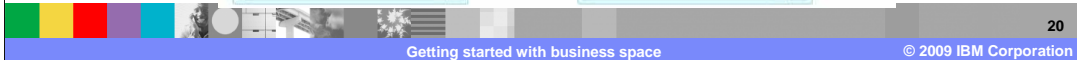
#### Create a space

Create your own space containing the information that you want to see and share it with other people



#### Get help

See how to find more information about Business Space



For more details, visit the on line product information center that is linked from this page

## Summary

- This presentation covered the basics of how to get started with the Web Sphere Business Space, specifically:
  - ▶ View hierarchy
  - ▶ Creating and managing spaces
  - ▶ Creating and managing pages
  - ▶ Adding widgets
  - ▶ User access and sharing spaces and pages
- Details of how to use the specific BPM product specific widgets are covered in the product business space presentations



In summary, this presentation covered the basics of how to get started and manage the business space for all the BPM products. The details of how to use the product specific widgets are covered in the separate product presentations.

## Feedback

### Your feedback is valuable

You can help improve the quality of IBM Education Assistant content to better meet your needs by providing feedback.

- Did you find this module useful?
- Did it help you solve a problem or answer a question?
- Do you have suggestions for improvements?

Click to send e-mail feedback:

[mailto:iea@us.ibm.com?subject=Feedback about WPIv612 BusinessSpace GettingStarted.ppt](mailto:iea@us.ibm.com?subject=Feedback%20about%20WPIv612%20BusinessSpace%20GettingStarted.ppt)

This module is also available in PDF format at:

[..\WPIv612\\_BusinessSpace\\_GettingStarted.pdf](..\WPIv612_BusinessSpace_GettingStarted.pdf)



You can help improve the quality of IBM Education Assistant content by providing feedback.

## Trademarks, copyrights, and disclaimers

IBM, the IBM logo, ibm.com, and the following terms are trademarks or registered trademarks of International Business Machines Corporation in the United States, other countries, or both:  
WebSphere

If these and other IBM trademarked terms are marked on their first occurrence in this information with a trademark symbol (® or ™), these symbols indicate U.S. registered or common law trademarks owned by IBM at the time this information was published. Such trademarks may also be registered or common law trademarks in other countries. A current list of other IBM trademarks is available on the Web at "Copyright and trademark information" at <http://www.ibm.com/legal/copytrade.shtml>

Adobe is a registered trademarks or trademarks of Adobe Systems Incorporated in the United States, other countries, or both.

Internet Explorer, Microsoft, and the Windows logo are registered trademarks of Microsoft Corporation in the United States, other countries, or both.

Other company, product, or service names may be trademarks or service marks of others.

Product data has been reviewed for accuracy as of the date of initial publication. Product data is subject to change without notice. This document could include technical inaccuracies or typographical errors. IBM may make improvements or changes in the products or programs described herein at any time without notice. Any statements regarding IBM's future direction and intent are subject to change or withdrawal without notice, and represent goals and objectives only. References in this document to IBM products, programs, or services does not imply that IBM intends to make such products, programs or services available in all countries in which IBM operates or does business. Any reference to an IBM Program Product in this document is not intended to state or imply that only that program product may be used. Any functionally equivalent program, that does not infringe IBM's intellectual property rights, may be used instead.

THE INFORMATION PROVIDED IN THIS DOCUMENT IS DISTRIBUTED "AS IS" WITHOUT ANY WARRANTY, EITHER EXPRESS OR IMPLIED. IBM EXPRESSLY DISCLAIMS ANY WARRANTIES OF MERCHANTABILITY, FITNESS FOR A PARTICULAR PURPOSE OR NONINFRINGEMENT. IBM shall have no responsibility to update this information. IBM products are warranted, if at all, according to the terms and conditions of the agreements (for example, IBM Customer Agreement, Statement of Limited Warranty, International Program License Agreement, etc.) under which they are provided. Information concerning non-IBM products was obtained from the suppliers of those products, their published announcements or other publicly available sources. IBM has not tested those products in connection with this publication and cannot confirm the accuracy of performance, compatibility or any other claims related to non-IBM products.

IBM makes no representations or warranties, express or implied, regarding non-IBM products and services.

The provision of the information contained herein is not intended to, and does not, grant any right or license under any IBM patents or copyrights. Inquiries regarding patent or copyright licenses should be made, in writing, to:

IBM Director of Licensing  
IBM Corporation  
North Castle Drive  
Armonk, NY 10504-1785  
U.S.A.

Performance is based on measurements and projections using standard IBM benchmarks in a controlled environment. All customer examples described are presented as illustrations of how those customers have used IBM products and the results they may have achieved. The actual throughput or performance that any user will experience will vary depending upon considerations such as the amount of multiprogramming in the user's job stream, the I/O configuration, the storage configuration, and the workload processed. Therefore, no assurance can be given that an individual user will achieve throughput or performance improvements equivalent to the ratios stated here.

© Copyright International Business Machines Corporation 2009. All rights reserved.

Note to U.S. Government Users - Documentation related to restricted rights-Use, duplication or disclosure is subject to restrictions set forth in GSA ADP Schedule Contract and IBM Corp.

