



IBM Software Group

IBM WebSphere Telecom Toolkit V7.0

Telecom application enablement tools

Overview and features



@business on demand.

© 2009 IBM Corporation
Converted to video June 29, 2015

This presentation will provide an overview of the features of the IBM WebSphere® Telecom Toolkit version 7.0 with an emphasis on the Telecom Application Enablement feature of the toolkit.

Goals

- Introduce the telecom application enablement feature in WebSphere Telecom Toolkit V7.0
- Understand the usage of the tools available in the Telecom application enablement feature



The goal of this presentation is to introduce the new development features in the Telecom Application Enablement feature of the Toolkit. These new and exciting features simplify various aspects of developing IP Multimedia Subsystem (IMS) client applications and server side enablers. This presentation will provide a brief overview of the functionality and usage of the various tools provided by this feature.

Agenda

- Overview
- Installation
- Development tools
- Test tools
- Samples
- Online Help



The presentation agenda starts with a general overview of the feature, followed by a walk-through of the installation steps. It then highlights the development and test tools, samples, and online help provided by the telecom application enablement feature.

Overview

- Two installable features
 - ▶ Telecom Web services feature
 - ▶ Telecom application enablement feature
- Telecom Application Enablement feature
 - ▶ Tools to develop and test
 - XML Configuration Access Protocol (XCAP), Session Initiation Protocol (SIP) and Diameter web-services based applications and services.
- Telecom Web services feature (Not covered in this presentation)
 - ▶ Build and test telecom Web services client applications using Parlay X 2.1 API's



The WebSphere Telecom Toolkit consists of the telecom Web services feature and the telecom application enablement feature. The telecom application enablement feature provides a collection of tools for developing IP Multimedia Subsystem client applications and server side enablers. Each of these tools is explained in greater detail later in the presentation.

This presentation covers only the telecom application enablement feature of the toolkit.

Installation

- Extension to Rational® Application Developer V7.5
- Available on Windows® and Linux® operating systems
- Installed as a feature of WebSphere Telecom Toolkit V7.0
- Getting Started guide includes installation and removal procedures



The Toolkit is built as an extension to Rational Application Developer version 7.5. It is available on Windows XP and Linux operating systems that Rational Application Developer 7.5 supports. The toolkit is installed with an InstallAnywhere installer. The Telecom Application Enablement feature and Telecom Web services feature are two independent features of the toolkit with no dependency on each other and can be installed separately. The getting started guide shipped with the toolkit covers the installation and uninstall instructions for both Windows and Linux operating systems.

Telecom application enablement tools

- Development tools overview
 - ▶ Application development tools for
 - Diameter, Presence, SIP, XML Document Management Server (XDMS), IMS Session Control (ISC)
 - ▶ Import wizard to import IMS Resources into a project
 - ▶ Add Libraries utility to add IMS libraries to a project
 - ▶ Samples to demonstrate usage
 - Diameter, Presence, SIP, XDMS, and IMS Session control Samples



The various tools available in the Telecom Application Enablement feature are as follows:

- Development tools for developing IMS applications based on Diameter Web services, Session Initiation Protocol standards, SIP for Instant Messaging and Presence Leveraging Extensions standards, and XML Document Management applications based on Open Mobile Alliance standards.
- An Import Wizard for importing IMS resources such as libraries, scripts, and Web service descriptor language files into a dynamic Web project based on Java™ EE specification standards.
- An Add Library utility to add the IMS library jar files to the class path of a project.
- A wide range of samples that includes
 - > Diameter Ro, Rf, and Sh Web services clients
 - > Rich presence enabled samples, IMS Session Control SIP samples that use Diameter Ro and Rf interfaces to demonstrate how online and off-line charging can be applied to a SIP transaction.
 - > An XCAP client and several XML Document management enablers based on Open Mobile Alliance standards.

Refer to the Samples module to learn more about how to set up and use the samples.

Telecom application enablement tools continued

- Test tools overview
 - ▶ Client editors supporting
 - SIP protocol
 - XCAP protocol
 - Diameter Rf Web service
 - Diameter Sh Web service
 - ▶ Code snippet generator
 - ▶ Import/Export batch requests



The test tools support running single or batched client requests for SIP and XCAP protocols, and Diameter Rf, Ro, and Sh Web services.

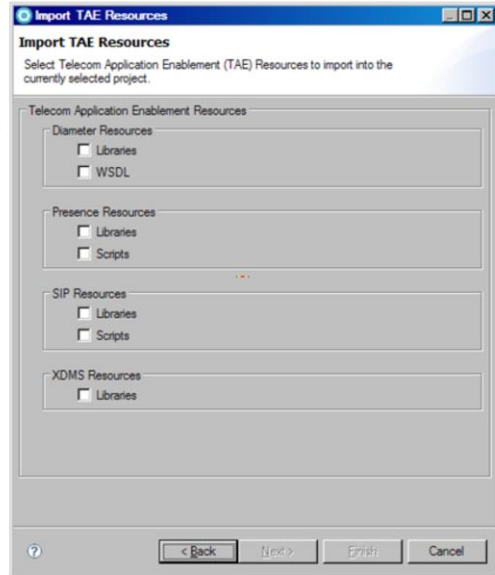
The client tools offer a way to generate code snippets for all the supported APIs. The batched requests can be saved to and reloaded from a file system.

Refer to the client tools module for more information on using these test tools.

Wizards - development tool

▪ To import TAE resources into a project

- ▶ Diameter libraries and WSDLs for developing applications that use Diameter Web services
- ▶ Presence libraries for developing WebSphere Presence Server extensions
- ▶ SIP libraries for SIP header parsing and SIPp scenario files
- ▶ XDMS Libraries for XCAP and XDMS applications



The Import Telecom Application Enablement wizard is used to import various Java libraries, Web service descriptors, and scripts into an existing Web or Java project for development of converged applications that make use of these resources.

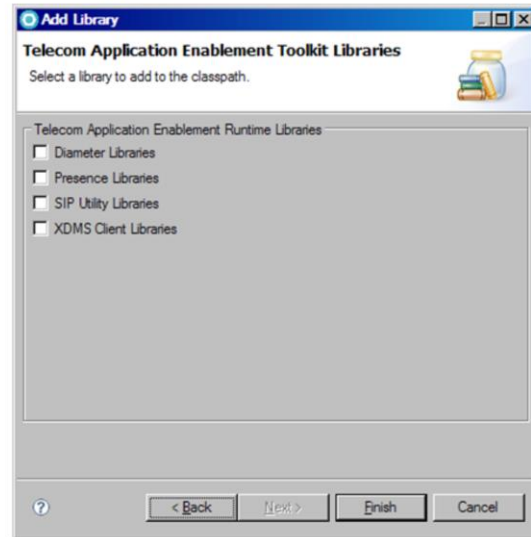
The Java libraries are recommended to be imported into a Web module project for development of converged applications that make use of both Web resources along with telecom resources. When imported into a Web project, the library is imported into the lib folder of the project. Importing these resources into the lib folder enables the packaging of these resources for easy deployment when Web applications are exported into a Java EE Web archive.

These import resources include –

- the Diameter libraries and Web service Description Language files for the Diameter Rf, Ro, and Sh Web services,
- the presence libraries for creating the IBM WebSphere Presence Server extensions,
- SIPp scripts for testing subscribes and publish scenarios,
- the SIP library, which contains the classes to find and add P-Asserted Identity and change P ChargingVector headers,
- and the XML Document Management resources, which have the core and utility classes and API for developing new IBM XDMS enablers or to add extensions to these enablers.

Add libraries utility – development tool

- Facility to add libraries
 - ▶ Diameter
 - ▶ Presence
 - ▶ SIP
 - ▶ XDMS
- Launching this utility
 - ▶ Right click Project -> Properties -> Java Build Path -> Libraries Page -> Add Library -> Telecom Application Enablement Toolkit Libraries



The Add Libraries Utility, available through the Java Build Path wizard launched from the Properties function of a Web project, provides the same libraries available through the import Telecom Application Enablement resources wizard. The difference is that the Java Build Path wizard adds the library to the class path of the project versus adding it to the lib folder.

Adding the libraries to the class path enables any new user code to reference the classes in the libraries. These libraries are not packaged into a Web archive when the project is exported to create a deployable Web archive as the class path of the project is a development time artifact only. Adding the libraries using the class path approach can be used when the libraries are already deployed on the application server where the Web archive is deployed. Using the class path approach will not duplicate the libraries since they will not be included in the Web archive when they are already available on the application server. The class path approach can also be used for a stand-alone Web service client application.

Test tools

- Four test clients, each targeted to test a specific protocol or a Web service
 - ▶ Each client built as an editor
- Based of a telecom application enablement batched request script
- Wizard available to create a new script
 - ▶ Creates an .ims file in the selected project
- Tests can be run as single or batched tests
- Batched tests can be saved in .ims file



The test tools in the toolkit include four test clients, each targeted to build client side tests for a specific protocol or Web service in accordance to the protocol standards or Web service specification. Each client is built as an editor which provides fields to enter values in order to create the client tests.

The four test clients are run based off a Telecom Application Enablement Batched Request script file. The tools provide a wizard to create this script. The wizard allows you to give a custom name to the script and generates a file with an .ims extension. Running the wizard results in creating a this file and launching the clients. The .ims file is used to store any reusable batched tests you create using the test clients. All the clients provide the flexibility of running the tests as individual tests or as a batched request. The steps to configure each of the test clients and to create single or batched tests is explained in more detail in the Client Tools education module.

Test tools

- XCAP client
 - ▶ Test add, delete, update and query operations of XML documents against an XCAP server
- SIP client
 - ▶ Test SIP requests using SIPp open source SIP traffic generation runtime
- Diameter Rf and Sh clients
 - ▶ Test object methods of offline charging Rf and subscriber profile Sh Web services



The test tools include the XCAP Client used to create and run XCAP requests to add, delete, update, and query XML documents on an XCAP compliant server such as the IBM XML Document Management Server (XDMS). IBM XDMS adheres to Open Mobile Alliance XML document management specifications.

The XCAP client provides a configurable user interface with fields for entering values to build XCAP requests as per the XCAP specification.

The SIP Client is built on top of the SIPp runtime, which is an open source traffic generation tool for the SIP protocol. You can learn more about SIPp at the <http://sipp.sourceforge.net/> Web site. The SIP client provides a user interface to run SIPp scripts with all the configurable options. SIPp provides you with a pre-built SIPp scenario script.

The Diameter Rf and Sh test clients provide the ability to test the object methods of the offline charging Rf and the subscriber profile Sh Web service using manually configured parameters for the methods. To learn more about configuring and using each of the test clients, refer to the Client Tools education module.

Samples

- Diameter sample
 - ▶ For testing design parameters for applications against the Rf, Ro and Sh Web services
- Presence sample
 - ▶ SIP External Source sample demonstrate the behavior of a SIP external source using SIPp scripting
 - ▶ Presence REST Sample demonstrate the use of REST API in presence server
- SIP samples
 - ▶ Demonstrate online and offline charging of SIP transaction using Ro, Rf interfaces and IMS Session Control



The toolkit provides several IMS samples in the online help under the Telecom Application Enablement feature sub category of the samples directory. These samples enable developers to quickly understand the API's provided and efficiently develop new client applications and server side extensions for the Diameter, rich presence, IMS session control, and XML document management services.

The Telecom Application Enablement samples are categorized based on the various services offered by IBM IMS services and include:

- The Diameter samples category which includes samples to demonstrate how to design the test parameters for client applications of offline charging Rf, online charging Ro, and subscriber profile Sh diameter Web services.
- The Presence samples category which includes two samples,
 - > the SIP external source sample is a SIPp script scenario that demonstrate the behavior of a SIP external source.
 - > the REST sample is Web application that demonstrate how to retrieve rich presence information from a presence server using REST API.
- The SIP Sample category which includes a sample that demonstrates how online and offline charging can be done for a SIP transaction using the online charging Ro and offline charging Rf diameter Web services and IMS Session Control interfaces.

Samples

- XDMS samples
 - ▶ XCAP client sample
 - ▶ XDMS template
 - ▶ SharedList sample
 - ▶ PresRules sample
 - ▶ Shared group sample
 - ▶ Shared policy sample
 - ▶ Shared profile sample
 - ▶ Shared enablers sample



The XDMS sub category includes several samples for building XCAP client application and server side enablers. The samples include:

- The XCAP Client sample, which demonstrates running XCAP batched requests against an XCAP compliant server like the IBM XML Document Management server.
- The XDMS Template sample, which contains template SIP and Web servlets and core XML schema files for developing new XML document management enablers based on the open mobile alliance XML document management standards.
- The Shared List, Presence Rules, Shared Group, Shared Policy, Shared Profile, and Shared Enabler XDMS samples provide the corresponding Http and SIP servlets and the core XML schema files. These Web and SIP artifacts are packaged as a Web application for managing rls-services and resource-lists XML documents. These documents are based on open mobile alliance XML document management standards.

To learn more about the setup and use of each of the telecom enablement samples, refer to the Samples education module.

Online help

- Toolkit online help
 - ▶ Launched using Help -> Help Contents -> Expanding Telecom Enablement feature



The Telecom Application Enablement feature of the toolkit provides comprehensive online help on various tools topics as shown in the figure. The help system of the tool provides a wealth of information on how to efficiently use the tools to meet your needs. The online help can be launched by selecting Help -> Help Contents and then expanding the Telecom Application Enablement feature topic.

Trademarks, copyrights, and disclaimers

IBM, the IBM logo, ibm.com, and the following terms are trademarks or registered trademarks of International Business Machines Corporation in the United States, other countries, or both:

Rational WebSphere

If these and other IBM trademarked terms are marked on their first occurrence in this information with a trademark symbol (® or ™), these symbols indicate U.S. registered or common law trademarks owned by IBM at the time this information was published. Such trademarks may also be registered or common law trademarks in other countries. A current list of other IBM trademarks is available on the Web at "Copyright and trademark information" at <http://www.ibm.com/legal/copytrade.shtml>

Rational is a trademark of International Business Machines Corporation and Rational Software Corporation in the United States, Other Countries, or both.

Windows, and the Windows logo are registered trademarks of Microsoft Corporation in the United States, other countries, or both.

Java, and all Java-based trademarks and logos are trademarks of Sun Microsystems, Inc. in the United States, other countries, or both.

Linux is a registered trademark of Linus Torvalds in the United States, other countries, or both.

Other company, product, or service names may be trademarks or service marks of others.

Product data has been reviewed for accuracy as of the date of initial publication. Product data is subject to change without notice. This document could include technical inaccuracies or typographical errors. IBM may make improvements or changes in the products or programs described herein at any time without notice. Any statements regarding IBM's future direction and intent are subject to change or withdrawal without notice, and represent goals and objectives only. References in this document to IBM products, programs, or services does not imply that IBM intends to make such products, programs or services available in all countries in which IBM operates or does business. Any reference to an IBM Program Product in this document is not intended to state or imply that only that program product may be used. Any functionally equivalent program, that does not infringe IBM's intellectual property rights, may be used instead.

THE INFORMATION PROVIDED IN THIS DOCUMENT IS DISTRIBUTED "AS IS" WITHOUT ANY WARRANTY, EITHER EXPRESS OR IMPLIED. IBM EXPRESSLY DISCLAIMS ANY WARRANTIES OF MERCHANTABILITY, FITNESS FOR A PARTICULAR PURPOSE OR NONINFRINGEMENT. IBM shall have no responsibility to update this information. IBM products are warranted, if at all, according to the terms and conditions of the agreements (for example, IBM Customer Agreement, Statement of Limited Warranty, International Program License Agreement, etc.) under which they are provided. Information concerning non-IBM products was obtained from the suppliers of those products, their published announcements or other publicly available sources. IBM has not tested those products in connection with this publication and cannot confirm the accuracy of performance, compatibility or any other claims related to non-IBM products.

IBM makes no representations or warranties, express or implied, regarding non-IBM products and services.

The provision of the information contained herein is not intended to, and does not, grant any right or license under any IBM patents or copyrights. Inquiries regarding patent or copyright licenses should be made, in writing, to:

IBM Director of Licensing
IBM Corporation
North Castle Drive
Armonk, NY 10504-1785
U.S.A.

Performance is based on measurements and projections using standard IBM benchmarks in a controlled environment. All customer examples described are presented as illustrations of how those customers have used IBM products and the results they may have achieved. The actual throughput or performance that any user will experience will vary depending upon considerations such as the amount of multiprogramming in the user's job stream, the I/O configuration, the storage configuration, and the workload processed. Therefore, no assurance can be given that an individual user will achieve throughput or performance improvements equivalent to the ratios stated here.

© Copyright International Business Machines Corporation 2009. All rights reserved.

Note to U.S. Government Users - Documentation related to restricted rights-Use, duplication or disclosure is subject to restrictions set forth in GSA ADP Schedule Contract and IBM Corp.

