

IBM Government Industry



IBM Software Universe

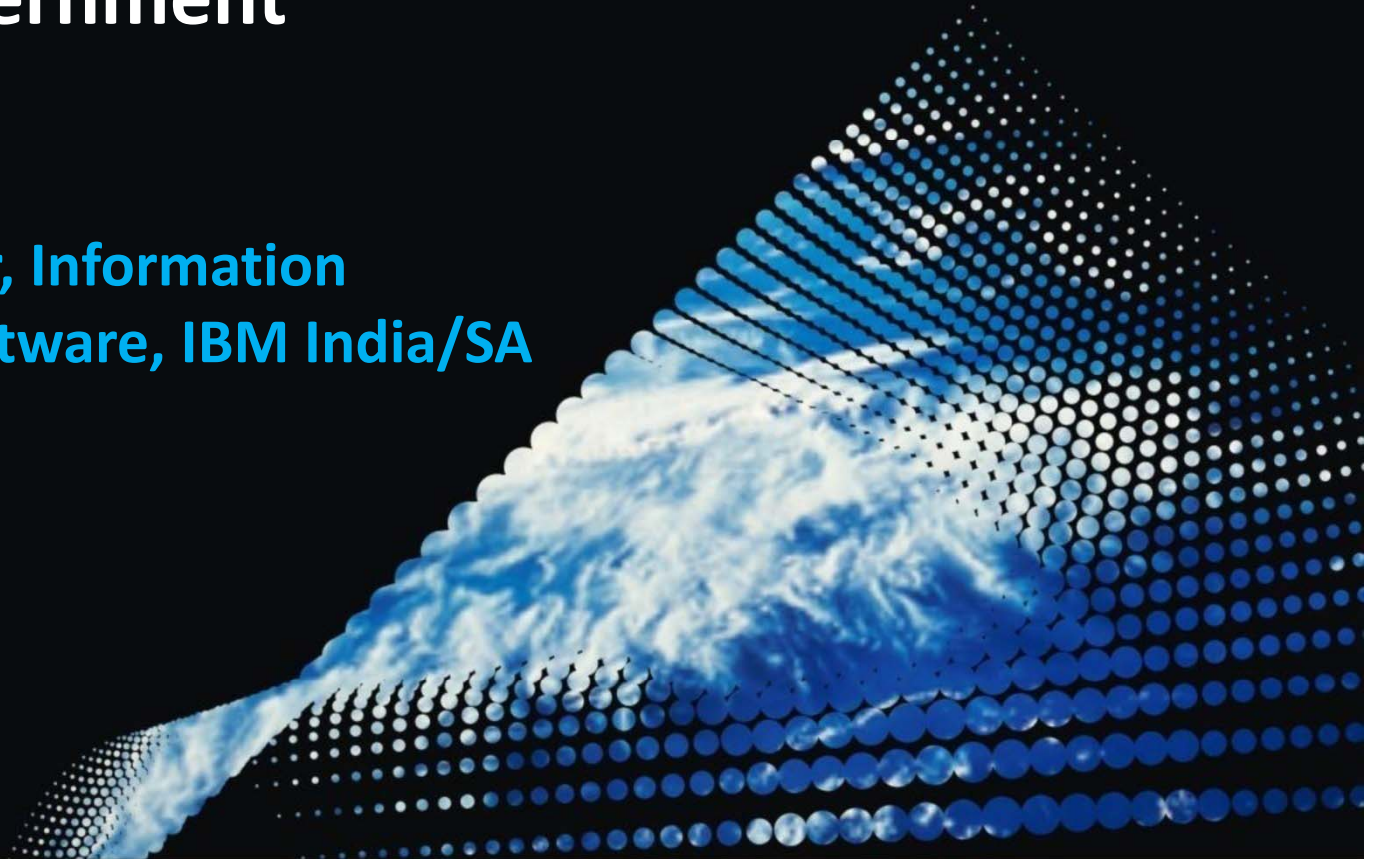
Smarter Businesses, Smarter Industries.

8th March 2011, Pan Pacific, Dhaka.



Smarter Government

Mr. Nitin Singhal
Country Manager, Information
Management Software, IBM India/SA



**The world is connected:
economically, socially and technically.**

To be successful, Governments must plan and manage local issues in connection with global trends.....



Globalization



Technology



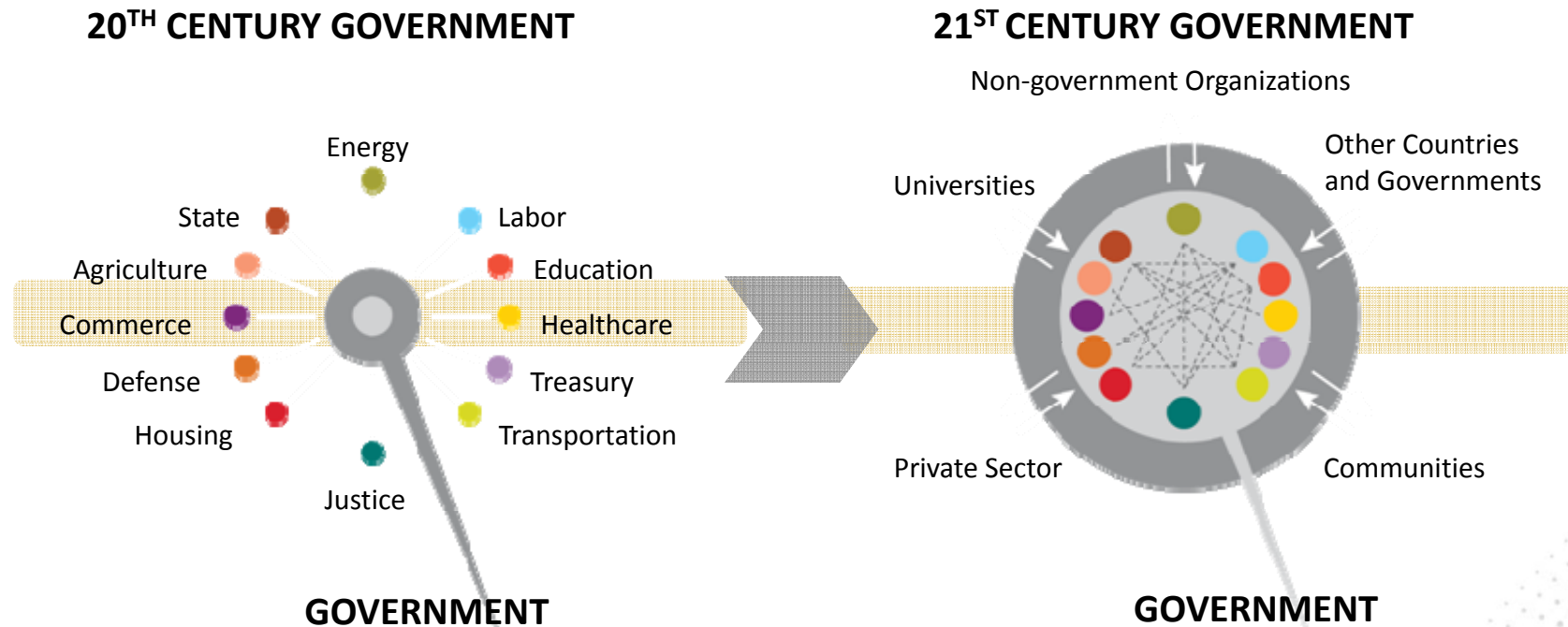
Environmental Concerns



Disasters & Security Threats

Smarter Businesses, Smarter Industries.

In today's world, the government needs to collaborate across the community for policy development, planning and management.



By thinking and acting in new ways, government leaders can make policy decisions and develop plans that will make a lasting contribution to the economic health and welfare of their communities.

Smarter Businesses, Smarter Industries.



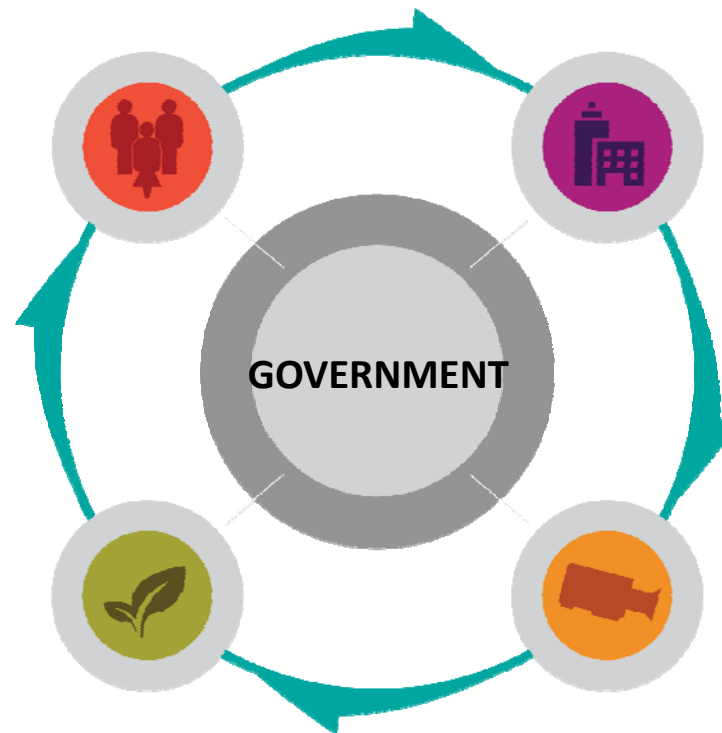
A Smarter Government will work to...

IMPROVE CITIZEN & BUSINESS SERVICES

Connecting people to programs based on individual needs—achieving sustainable outcomes while reducing operational costs and maximizing taxpayer value.

ENSURE A SUSTAINABLE ENVIRONMENT

Deploying environmentally responsible operations, from energy efficiency and conservation to transportation management and the pursuit of renewable resources.



MANAGE RESOURCES EFFECTIVELY

Leveraging business intelligence and planning to improve insight and elevate performance with visibility and control.

STRENGTHEN NATIONAL SECURITY AND PUBLIC SAFETY

Enabling defense and law enforcement organizations to achieve situational awareness, increased speed of command and combat superiority.

These rapidly advancing attributes, instrumented, interconnected, and intelligent, create an opportunity for governments to think and act in new ways.



Connecting people to programs based on individual needs— meeting objectives while reducing operational costs and maximizing taxpayer value.

Leveraging business intelligence and planning to improve insight and elevate performance with visibility and control.

Enabling defense & law enforcement organizations to achieve awareness, increased speed of command and combat superiority.

Deploying environmentally responsible operations, from energy efficiency and conservation to transportation management and the pursuit of renewable resources.

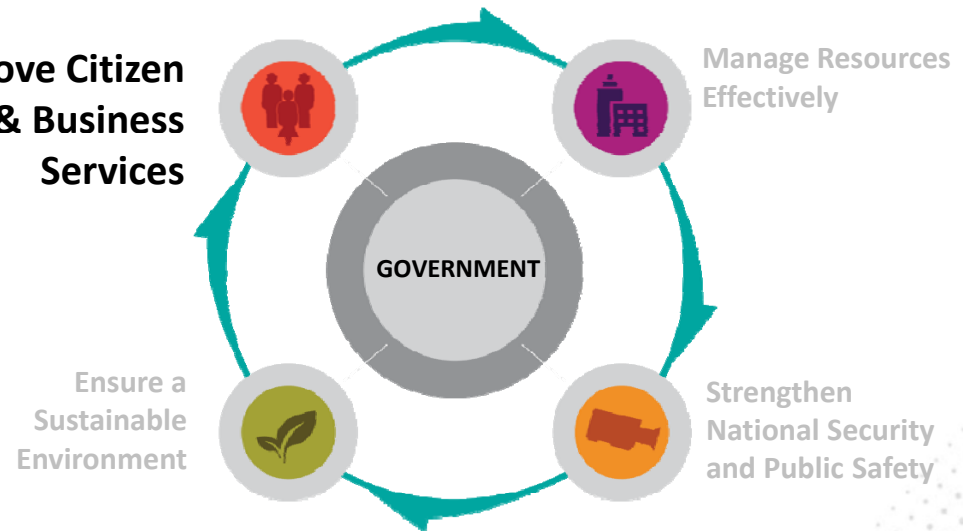


Government Services, particularly social security and social services, are key services and a major budget factor for all governments.

Smart Social Services

- **Intelligent citizen-services** to reduce resource wastage & improve outcome
- **Optimizing resources** to connect people to needed programs

Improve Citizen
& Business
Services



IBM's portfolio of offerings is developed around a robust Social Industry Model to help you perform your key mission objective – achieving sustainable outcomes for citizens.

Smarter Businesses, Smarter Industries.



Smarter Government: Smart Social Services



Alameda County, CA

Captures fragmented data and matches clients across programs. Helps improve program outcomes, reduce fraud and cost.



US Social Security Administration

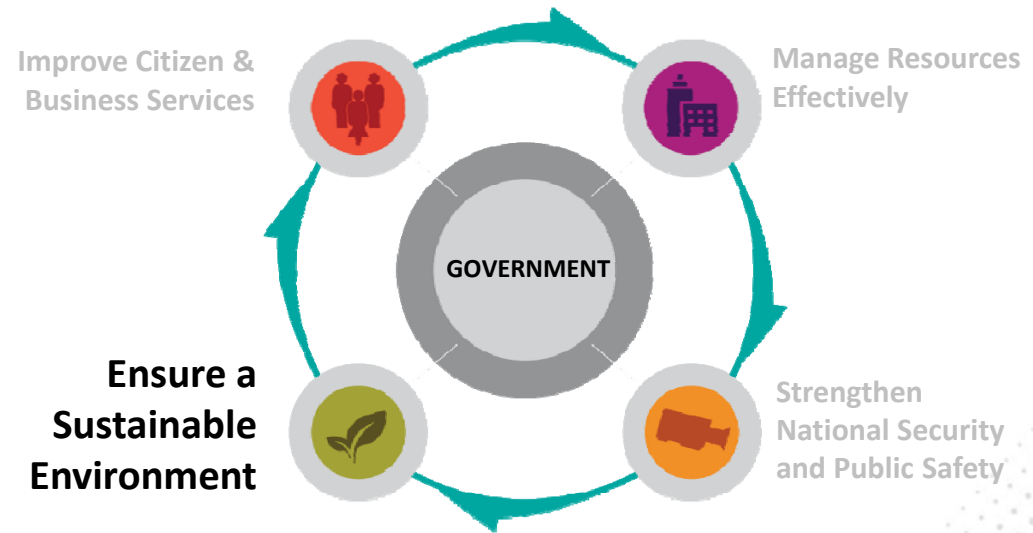
Saved expenses by \$1Billion between 2001-2006 and reduced the approval for disability benefits to about 10 days instead of the 3-4 months!



Governments can lead the way in energy conservation and environmental stewardship for their entire community

Ensure a Sustainable Environment

- **Smarter Transportation** - driving multi-modal transport & reduce congestion
- **Water Management** – to leverage technology to manage efficiently & reduce wastage



IBM's offerings are designed to help governments to run efficient and intelligent transportation, and manage, preserve and allocate water resources.



Smarter Government: Smarter Transportation



Stockholm implemented an intelligent toll system in the city center, that reduced traffic by 20%, emissions by 40% and created 40,000 additional users of the public transportation system.



Singapore Land Transport Authority implemented smart cards to be used to pay for buses, trains, taxis, road-use charging and parking, to encourage citizens to use multiple modes of transportation and reduce impact on the environment.



Smarter Government: Smarter Water



The Dutch Ministry of Public Works and Water Management implemented a remote, continuous and real-time monitoring of the levees that protect country from flooding conditions.



Ireland Marine Institute implemented a network of buoys, seafloor cables and other infrastructure to create real-time analytics.



National Security and Public Safety are essential services for all governments



Strengthen National Security and Public Safety

- **Customs Modernization**
- **Immigration & Border management**
- **Identity Management**
- **Network Centric Operations**
- **Public Safety solutions**



IBM's offerings help governments strengthen border & inland security, while facilitating trade and commerce; enable more effective and efficient mission accomplishment and help protect lives, property and infrastructure.



Smarter Borders



US Govt implemented the **Global Entry Program** to facilitate the entry of pre-approved U.S. citizens & permanent residents. It allows frequent international travelers access an automated kiosk to clear passport control, and provides an expedited exit lane, saving time for customs official.



Smarter Defense



German Federal Armed Force: Outsourced nonmilitary IT technology of the German Federal Armed Forces to modernize and centralize the IT system for one of Europe's largest military forces.



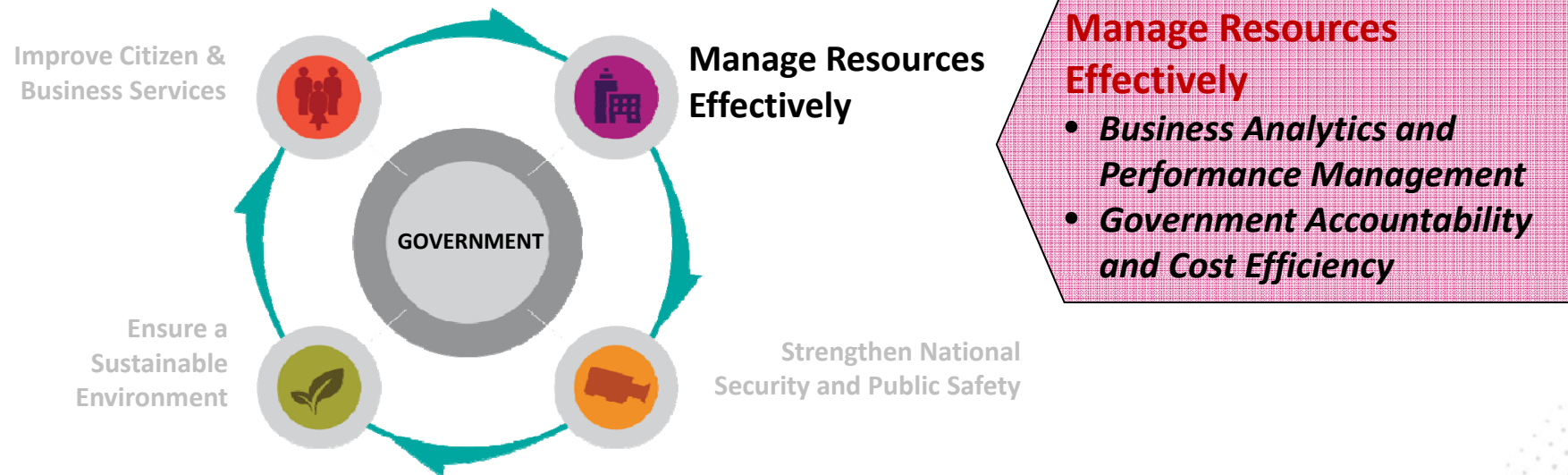
Smarter Public Safety



The **NYPD Crime Information Warehouse** gives officers mobile access to more than 120 million criminal complaints, and 5 million criminal records — resulting in a 27% reduction in crime.



There are many modern tools to help governments manage resources effectively and elevate performance



IBM predictive analytics and performance management tools help governments improve citizen services, and helps evaluate and address governance and unnecessary expenditures



Smarter Govt. Analytics



The City of Albuquerque has automated data collection and information sharing among its 7,000 employees in more than 20 departments to help reach out to citizens and its ability to give employees a single version of the truth.

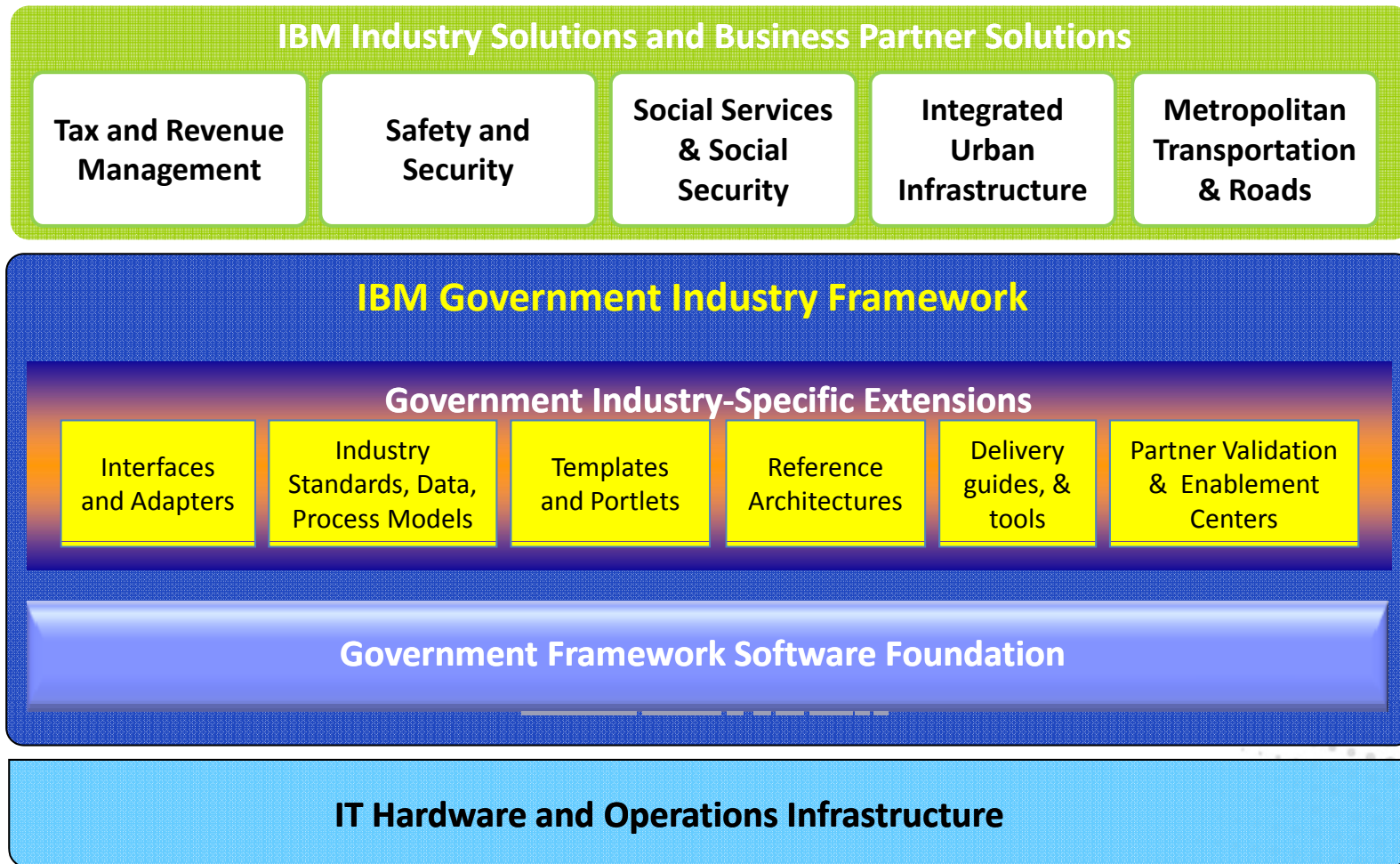


Smarter Resource Management



The Government of Denmark digitalized the entire public sector through a collaborative platform that connected central, regional, and local governments

IBM has a comprehensive portfolio of offerings reaching for several areas of government....delivered through a defined framework & complimented with expertise of leading application providers



A Century of Innovation in Government:

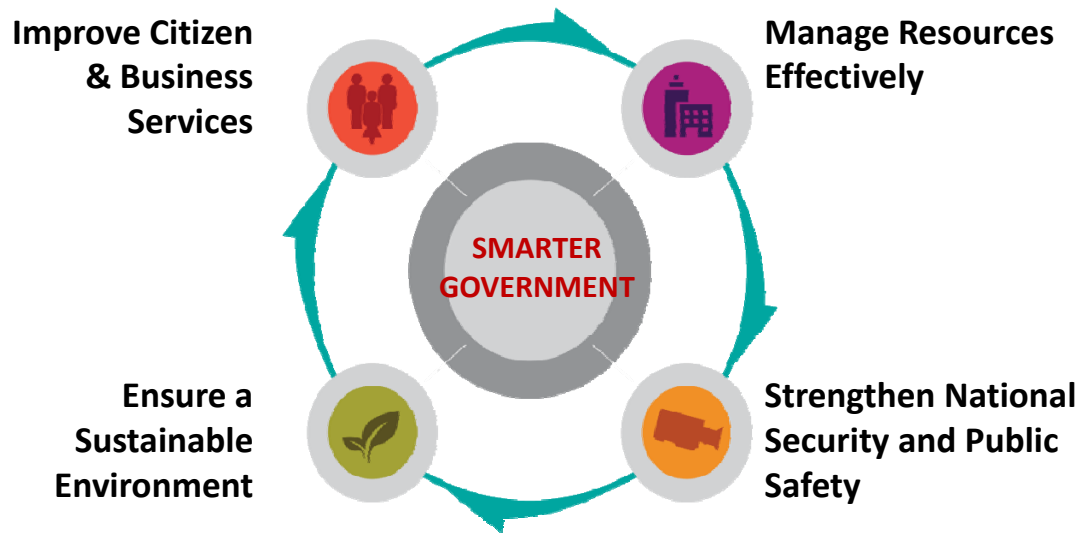
IBM has worked with government for more than 100 years.

We have valued relationships with local, regional and national governments in more than 100 countries in every part of the globe.

Our goal is to help governments achieve their mission of improving the economic health, welfare and safety of society.



Topics we will cover today.....



- **Delivering BI for Business Value**
- **Advance Case Management**
- **IBM Industry Solutions: Helping Governments help citizens & businesses**
- **Connect & Collaborate**
- **Data Reduction and Storage Management Transformation**
- **Acquiring a Single View of Citizen**
- **Scalable Application Infrastructure for Citizen Centric Services**
- **Smarter Governance**