



**IBM Software Universe**  
Smarter Businesses, Smarter Industries.

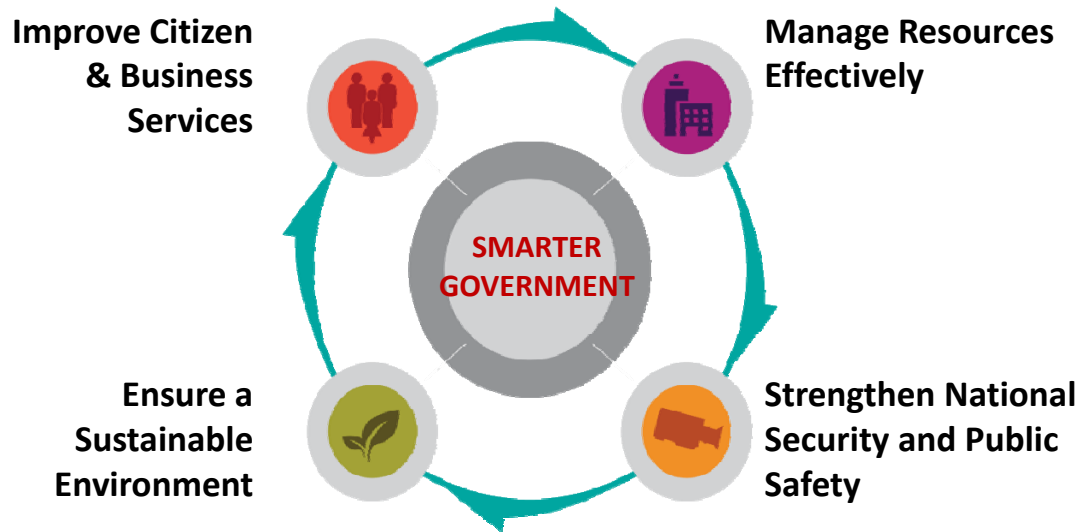
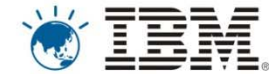
8th March 2011, Pan Pacific, Dhaka.



# Advance Case Management

**Brijesh Chopra,**  
**Industry Solutions Software**  
**IBM India, SA**

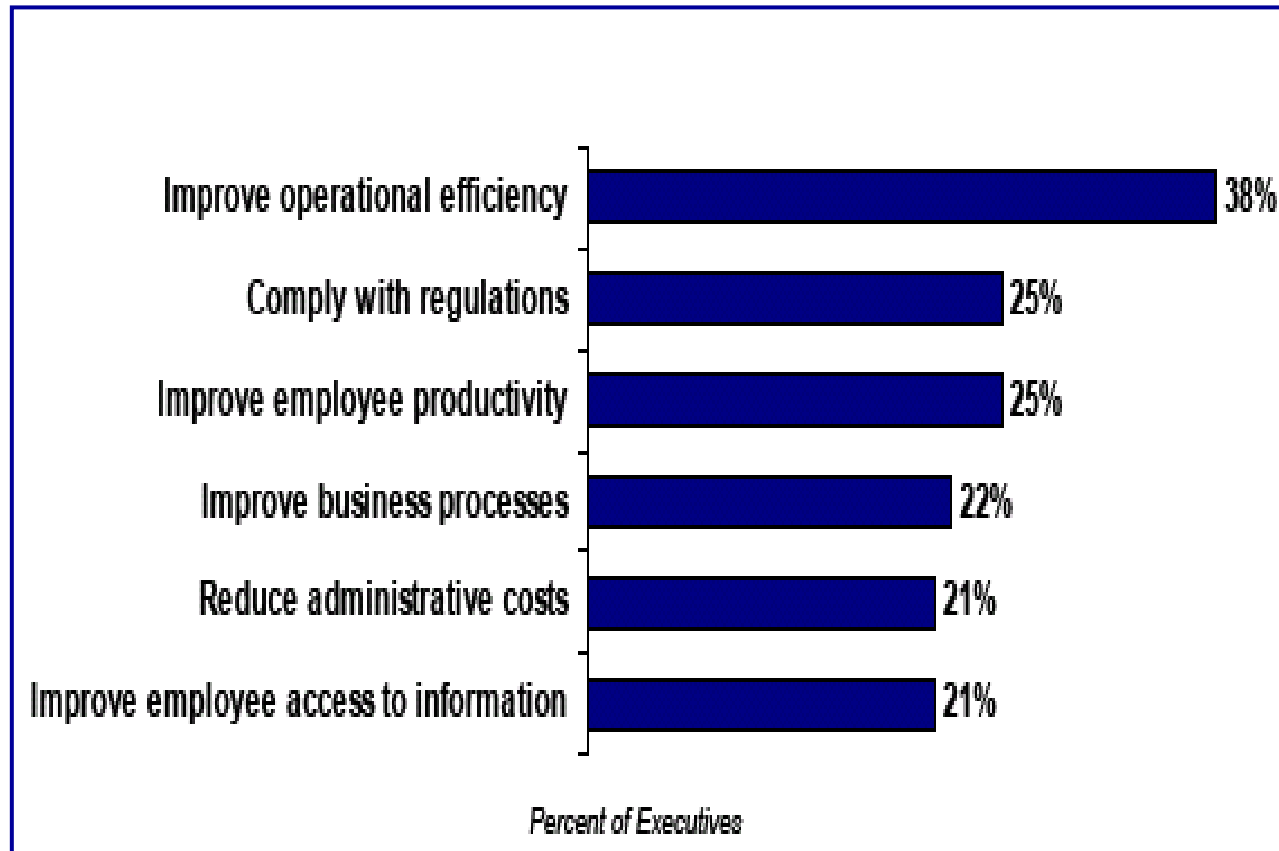
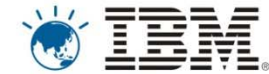
# A Smarter City ....



- Delivering BI for Business Value
- **Advance Case Management**
- IBM Industry Solutions: Helping Governments help citizens & businesses
- Connect & Collaborate
- Data Reduction and Storage Management Transformation
- Acquiring a Single View of Citizen
- Scalable Application Infrastructure for Citizen Centric Services
- Smarter Governance

Smarter Businesses, Smarter Industries.

# The key drivers for today's Government

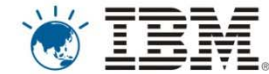


*Today's Government is becoming more like Business, having the largest market and the most diverse of interests!*

*Procurement Vehicles and RFPs, however, still reign supreme*

Smarter Businesses, Smarter Industries.

# What is Case Management?



- The creating of a **case file** and following a **process** to ensure delivery of services
- Case related information is used by **case managers or a case team** who **collaborate** to resolve and close a case.
- After a case is closed, information is typically retained for compliance or **long-term** business processes.
- Is **highly dynamic**, ad-hoc process and process are not fixed always
- Incorporates **content, processes, and collaboration**
- Involves **people** making decisions on specific information



# Case Management Across Industries

Invoice, contract, employee, vendor, customer, project, change request, complaint, exception, incident, audit, eDiscovery, etc.



## INSURANCE

- Policy
- Underwriting
- Claim
- Annuity



## BANKING

- Loan
- Dispute
- Mortgage
- Account
- Credit card
- Personal line
- Investment



## HEALTHCARE

- Patient case
- Member
- Provider



## GOVERNMENT

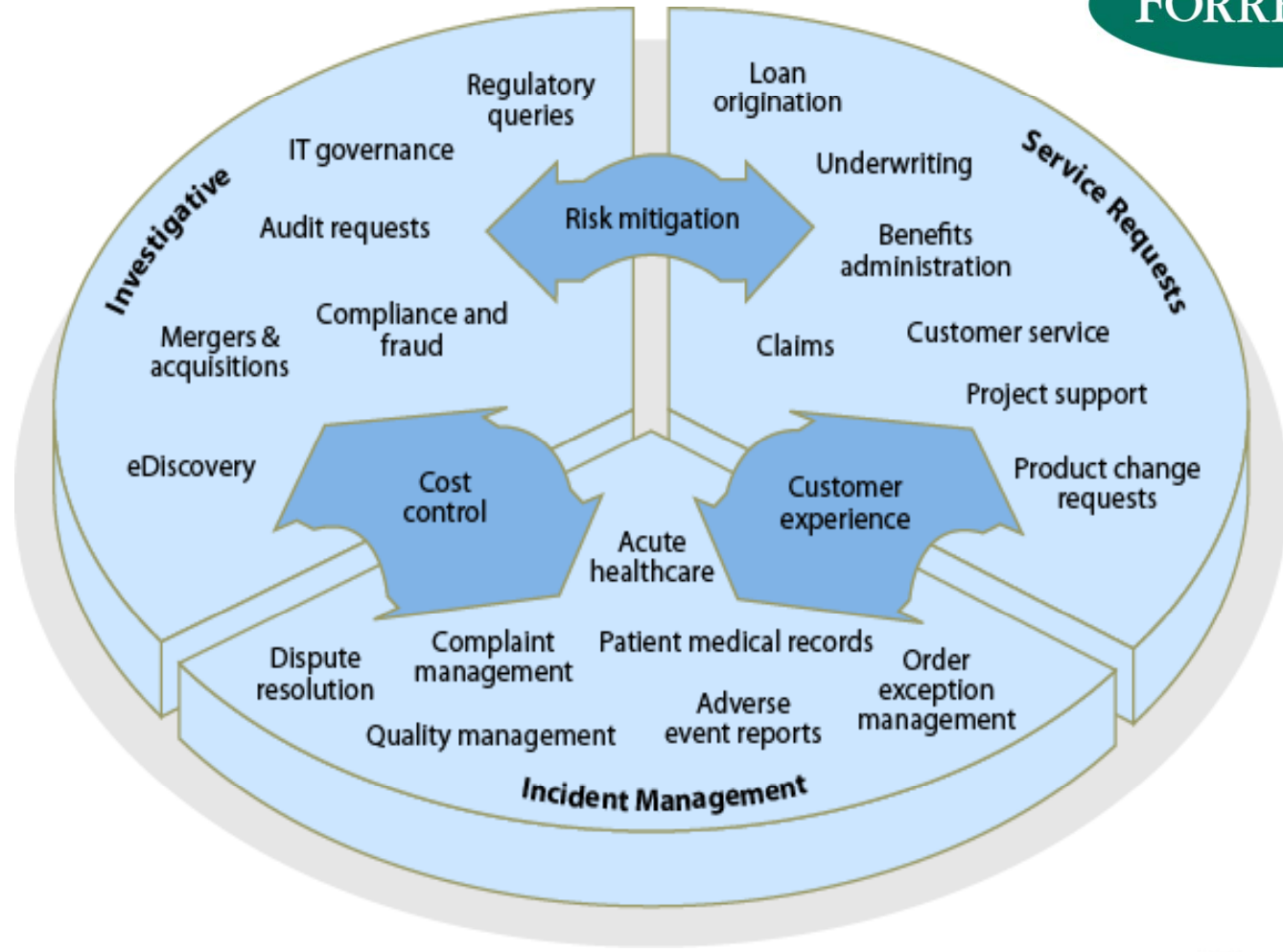
- Benefits enrolment
- Grant
- Court case
- Citizen
- Taxpayer



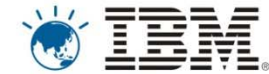
## ENERGY

- Rate case
- Claim
- Permit
- Land
- Property

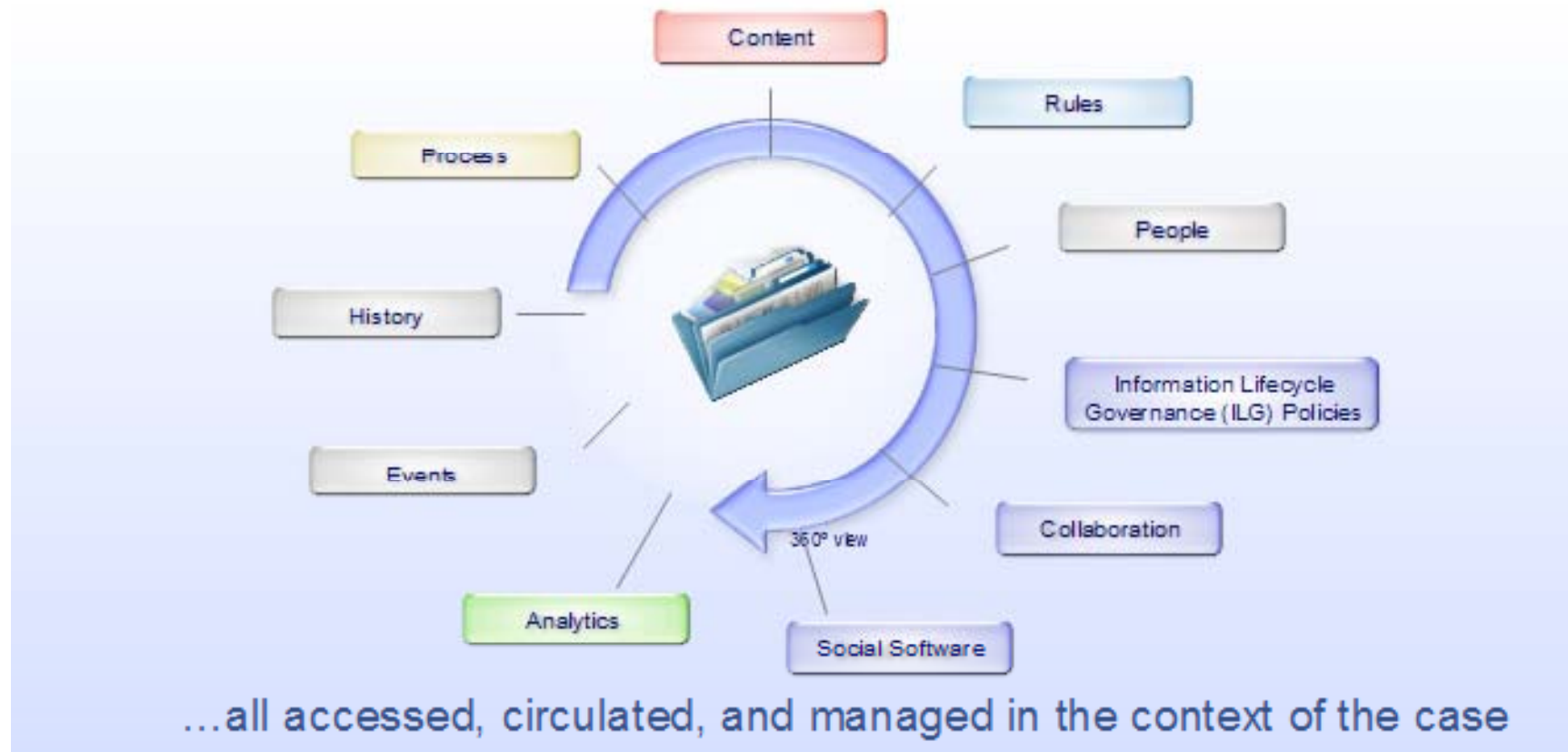
# Trends in Case Management



## What is in a “Case”?

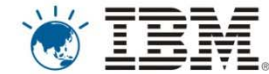


Information, correspondence, tasks, policies and rules, processes, and events that are required for resolution....



Smarter Businesses, Smarter Industries.

# What is Advanced Case Management (ACM)?



A highly ***Scalable Platform*** that links and Optimizes Content, Process and Compliance



Supports Multiple Platforms, Federation Services, Performance, Disaster recovery, Storage services Content Connectors to integrate with existing legacy applications (ERP, SAP, other),

Smarter Businesses, Smarter Industries.



# Optimizing Content with ACM

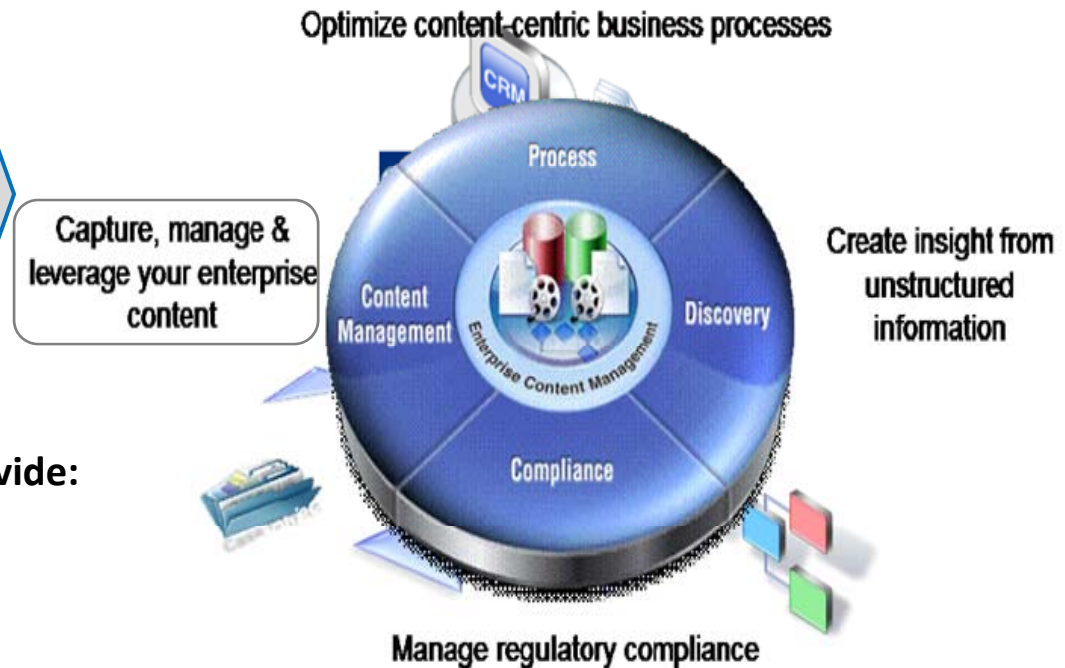


*Improve workforce effectiveness with faster access to trusted content in context*

- Content on customer, product, project, patient.....any type, any source - inside or outside an organization.
- Eg. Imaging / Capture, Document Management, Web Content, Report Management, Content Federation, Collaboration

## IBM Content Management solutions provide:

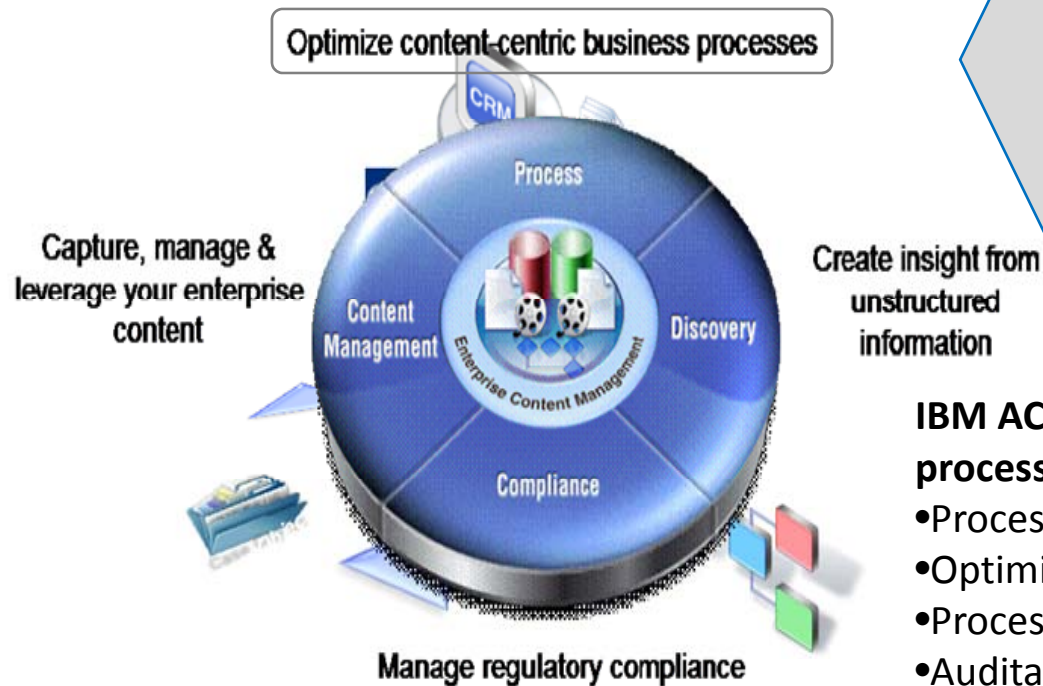
- Lifecycle management
- Library Services
- Search
- Records Management
- Archive
- Collaboration
- Security & Access Management



# Managing Processes with ACM



*Improve workflow Activates content in business applications and event driven decisions*



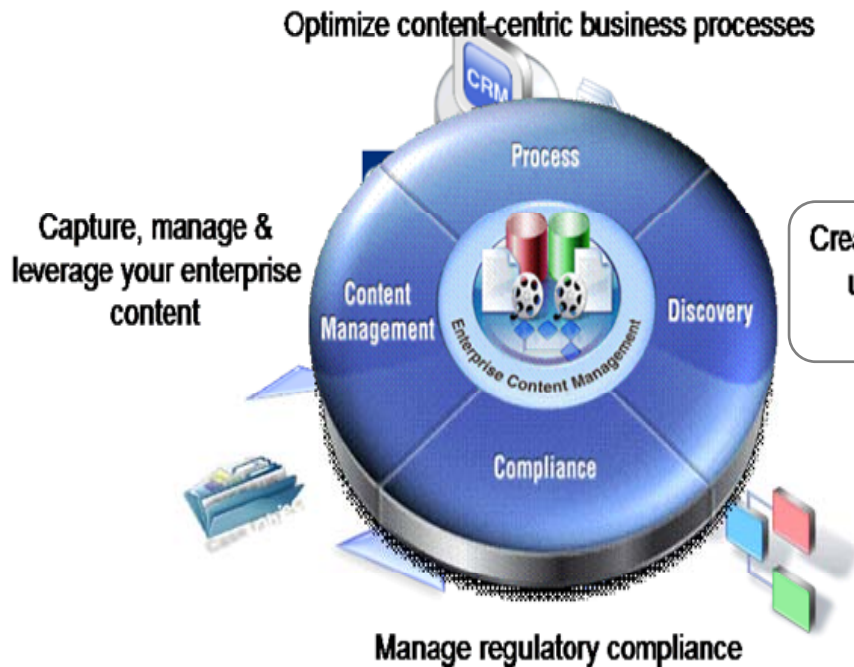
- Processes needed to organize required tasks into manageable and auditable steps.
- Eg. credit application, account opening, benefits claims, loan origination, accounts payable/receivable

**IBM ACM uses business rules to add value to processes:**

- Process Automation
- Optimized business processes
- Process design/ simulation
- Auditable Progress
- Measurable performance
- Workload balancing
- Role based work distribution/management

# Discovering Information with ACM

*Secure scalable enterprise wide search delivers highly relevant results for new insights*

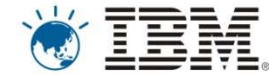


- Discover information from unstructured content
- Eg. Enterprise Search, Guided Navigation, Context Classification, Legal Discovery

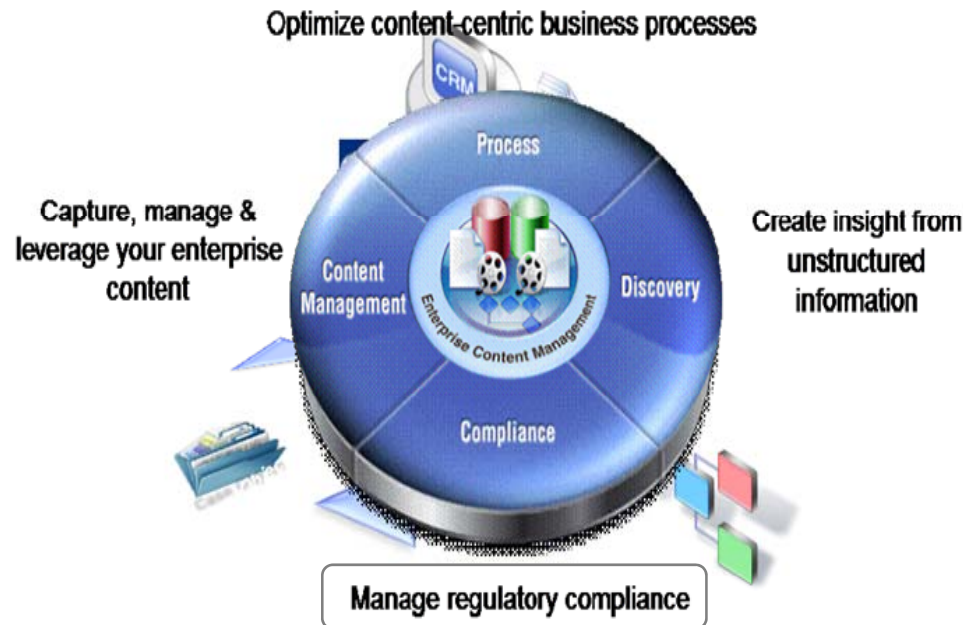
## IBM ACM helps automated classification of information

- Better search results
- Analysis of documents and a deeper understanding of what is in them - "Content Intelligence"
- Trends, threat detection and risk analysis
- Poor or non-existent indexes
- Role based work distribution & management

# Meeting Compliance with ACM



*Ensure electronic information is captured and managed in accordance to policies and regulations*



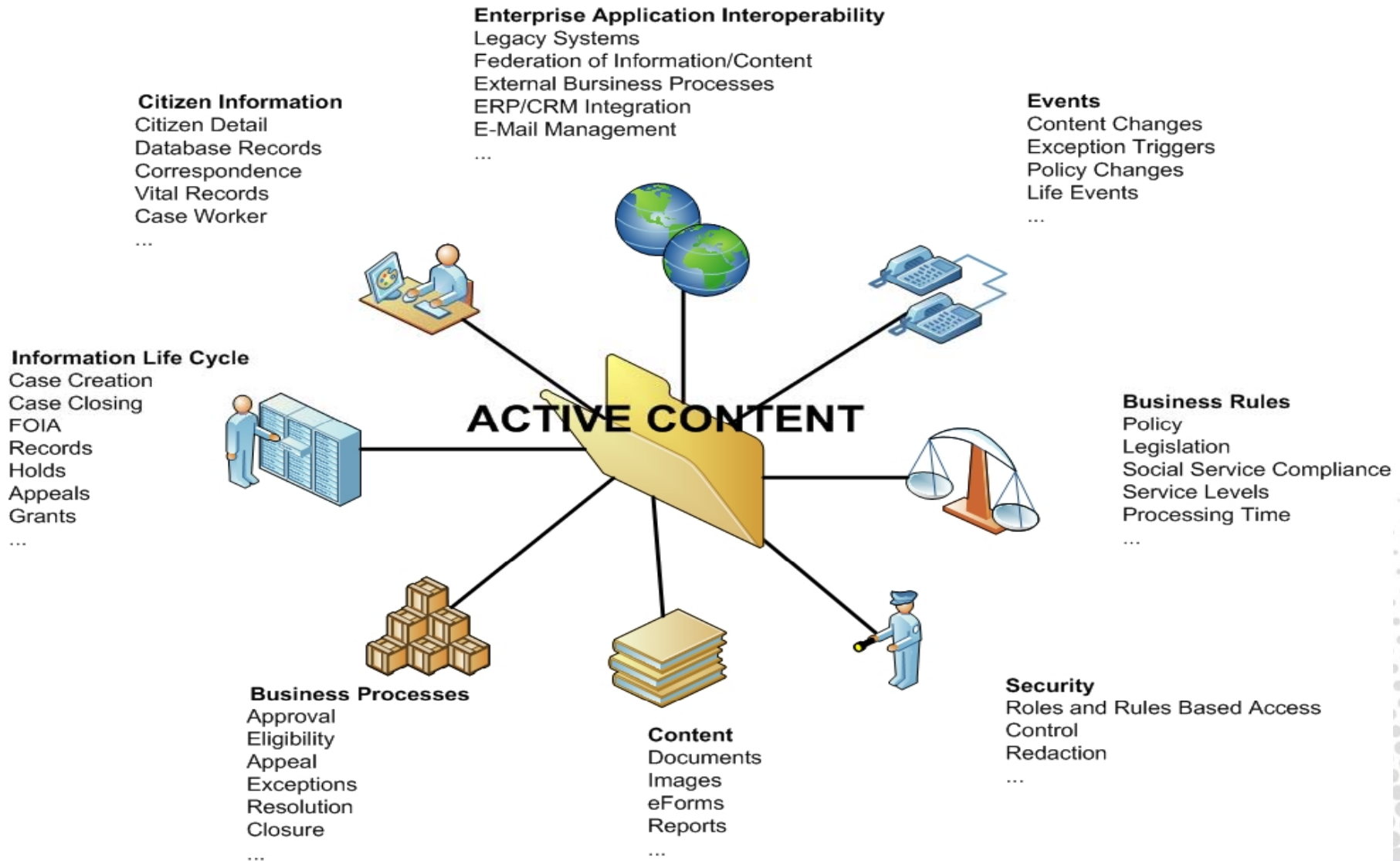
**IBM ACM helps achieve & continuous conformity to compliance measures**

- Regulation
- Laws
- Best Practices

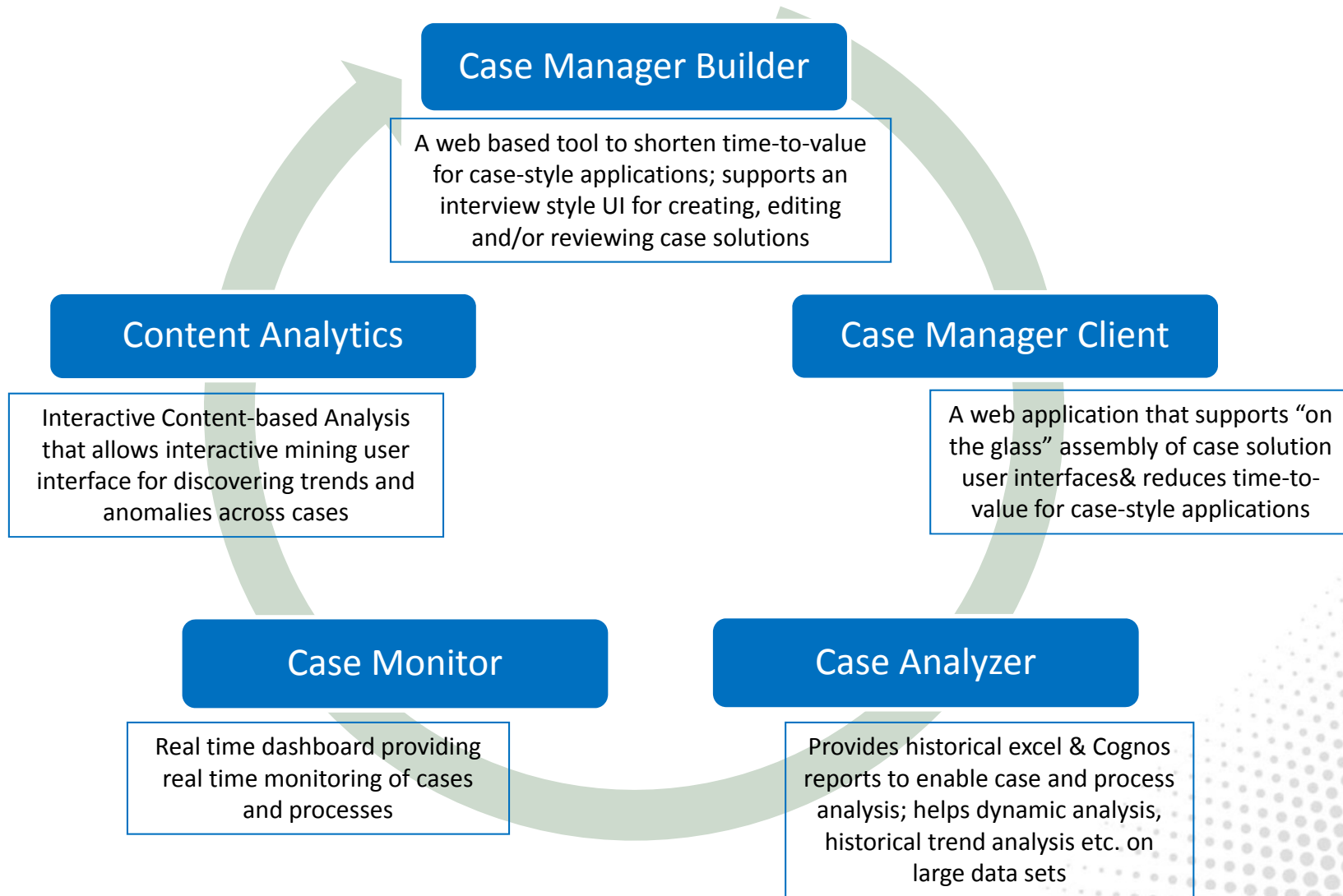
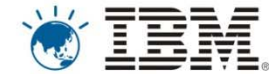
- Achieve Compliance: proper operational policies, processes and control over content and processes
- Sustain Compliance: Ensure compliance every time you perform the process
- Prove Compliance: Provide proof on your compliance measures



# IBM Case Manager: Bringing it all together!

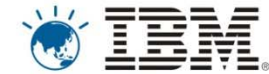


# IBM Case Manager Components



Smarter Businesses, Smarter Industries.

# How it helps the Government



## Constituent Needs

- Rapid Results
- Real Time Information
- Timely Service on Demand
- Minimal hassle for compliance

## Policy Makers

- Rapid decision making
- Resolve organizational conflicts
- Rapid resource re-allocation
- Empowerment



## Technology Tools

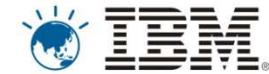
- Business Process Automation
- Business Intelligence
- Knowledge Management & Collaboration
- Enterprise Content Management
- Application Integration Middleware

## Service Challenges

- Multiple programs/silos to navigate
- Multiple layers of government
- Hierarchical structures and authority
- Fragmented organizations
- Data privacy
- Competing political and policy agendas
- Inability to recruit and retain talent
- Ancient legacy systems
- Rigid budget process
- Rigid procurement process



## Auckland City Council



### Challenge

- Process building and license applications and monitor results of associated project.
- Provide multi-user access to documents
- Reduce processing time and costs

### Solution

- ACM system which provides a structured view of site files and other information associated with each project.
- Integrated with existing Geographic Information System (GIS) and the city's property management system.

### Business Benefits

- Staff cost savings of 75%
- 50% cost savings per permit filed
- 100% ROI in 18 months
- Simultaneous access to project information by customers, suppliers and staff

**“Since customer no longer need to supply triplicate hard copies of building plans and forms to support their application for their project, this saves on average (conservatively estimated) 50% of the cost which translates into considerable savings and efficiencies for both the city and its customers”**



# Why IBM?





# IBM Software Universe

Smarter Businesses, Smarter Industries.

8th March 2011, Pan Pacific, Dhaka.



**THANK YOU**

