

What's New with Rational Team Concert

Rolf Nelson
Product Manager – Rational Team Concert
rsnelson@us.ibm.com

IBM Software

Innovate2011

The Premier Event for Software and Systems Innovation



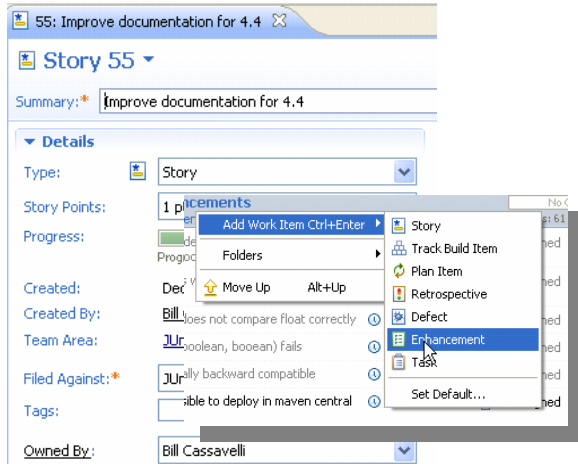
Software. Everywhere.

August 9-11, Bangalore | August 11, Delhi

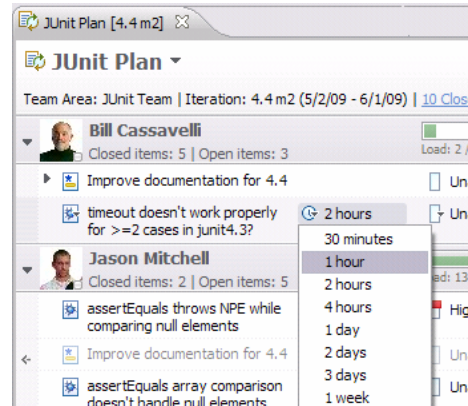


Rational Team Concert – A single tool, many uses

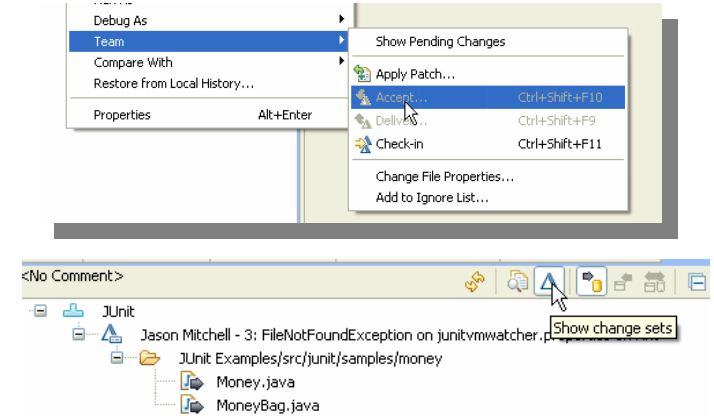
Work Items



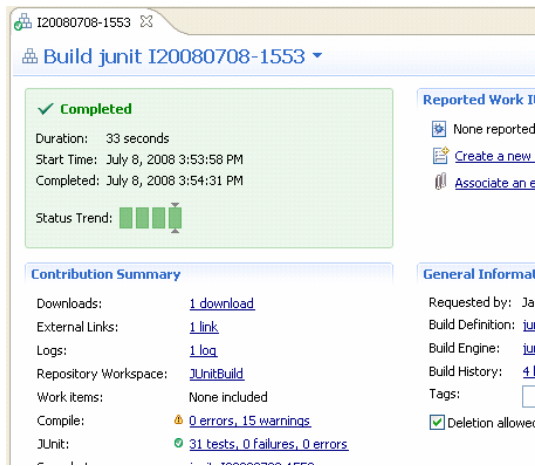
Planning



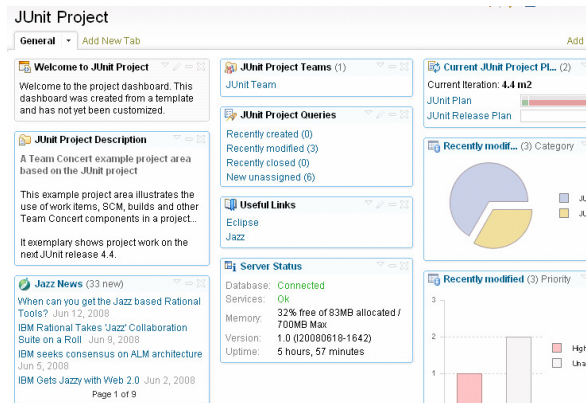
Source Control



Builds – Continuous Integration



Dashboards & Reporting



Method Enforcement and Automation

Problem

A work item must be associated with the change set or a comment must be set.

Reason

All change sets should be associated with a work item which is planned for t

This makes it e through the it why your chan

Solutions

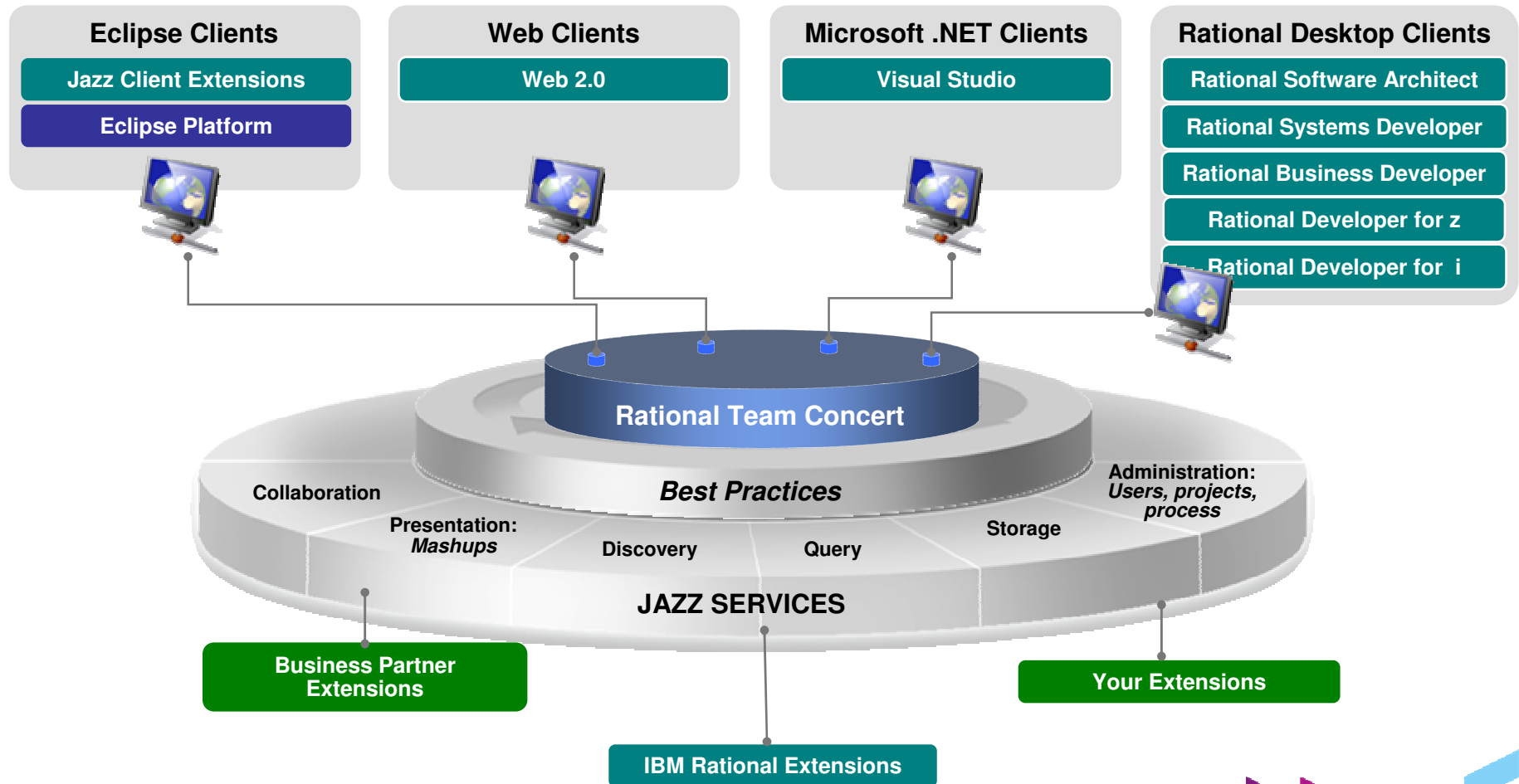
- Associate Existing Work Item
- Associate New Work Item
- Associate and Try Again (experimental)
- Override 'Descriptive Change Sets' Precondition

Deliver (failed)

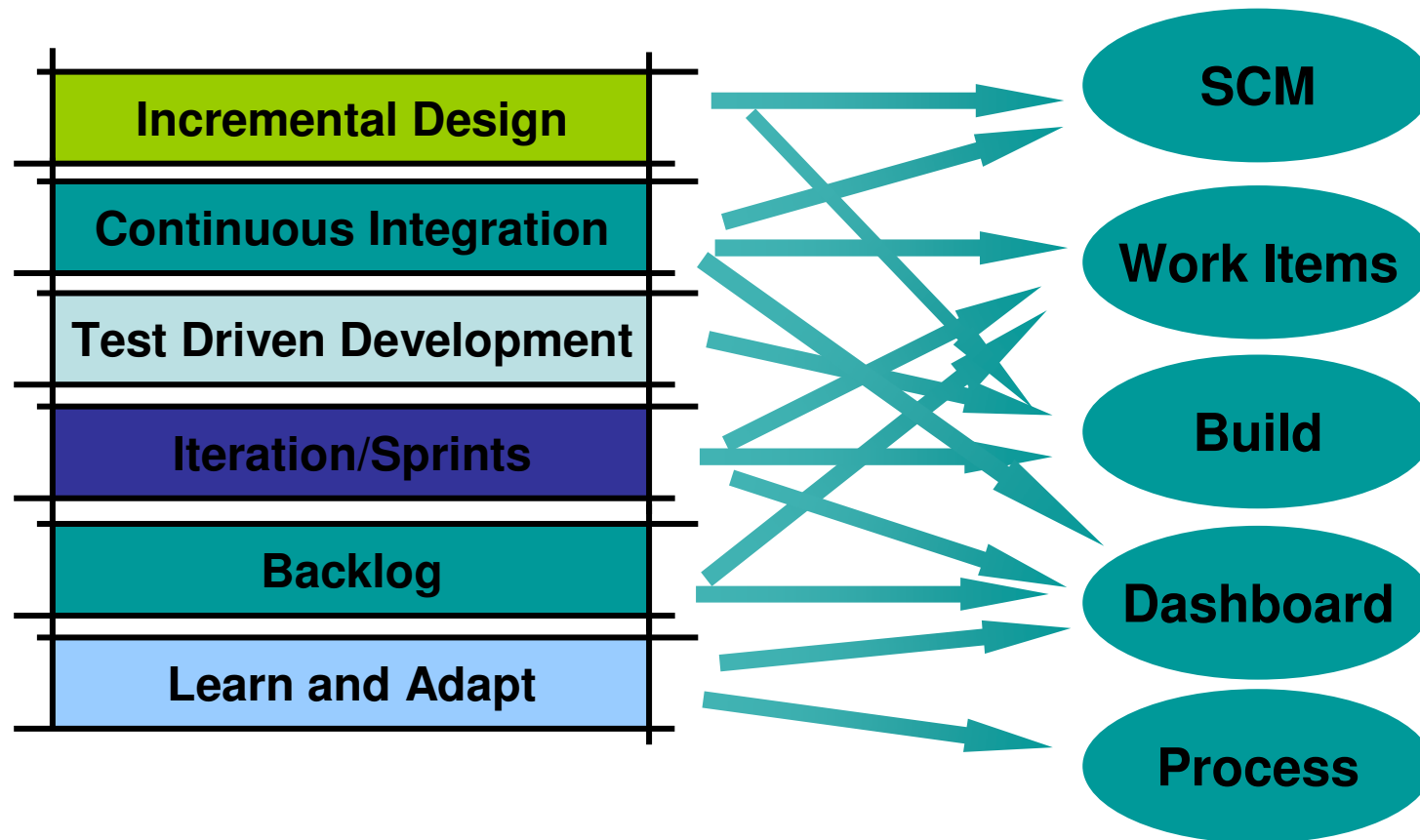
Missing work item or comment

Rational Team Concert: Built on an open, Web 2.0 platform

Supporting a broad range of desktop clients, IDE's and languages



Development Best Practices Touch Many Functions

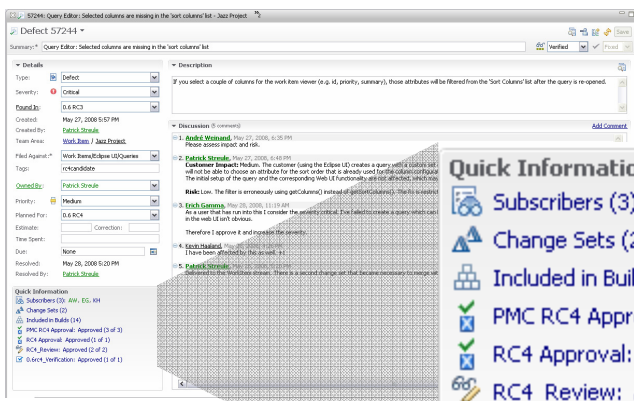
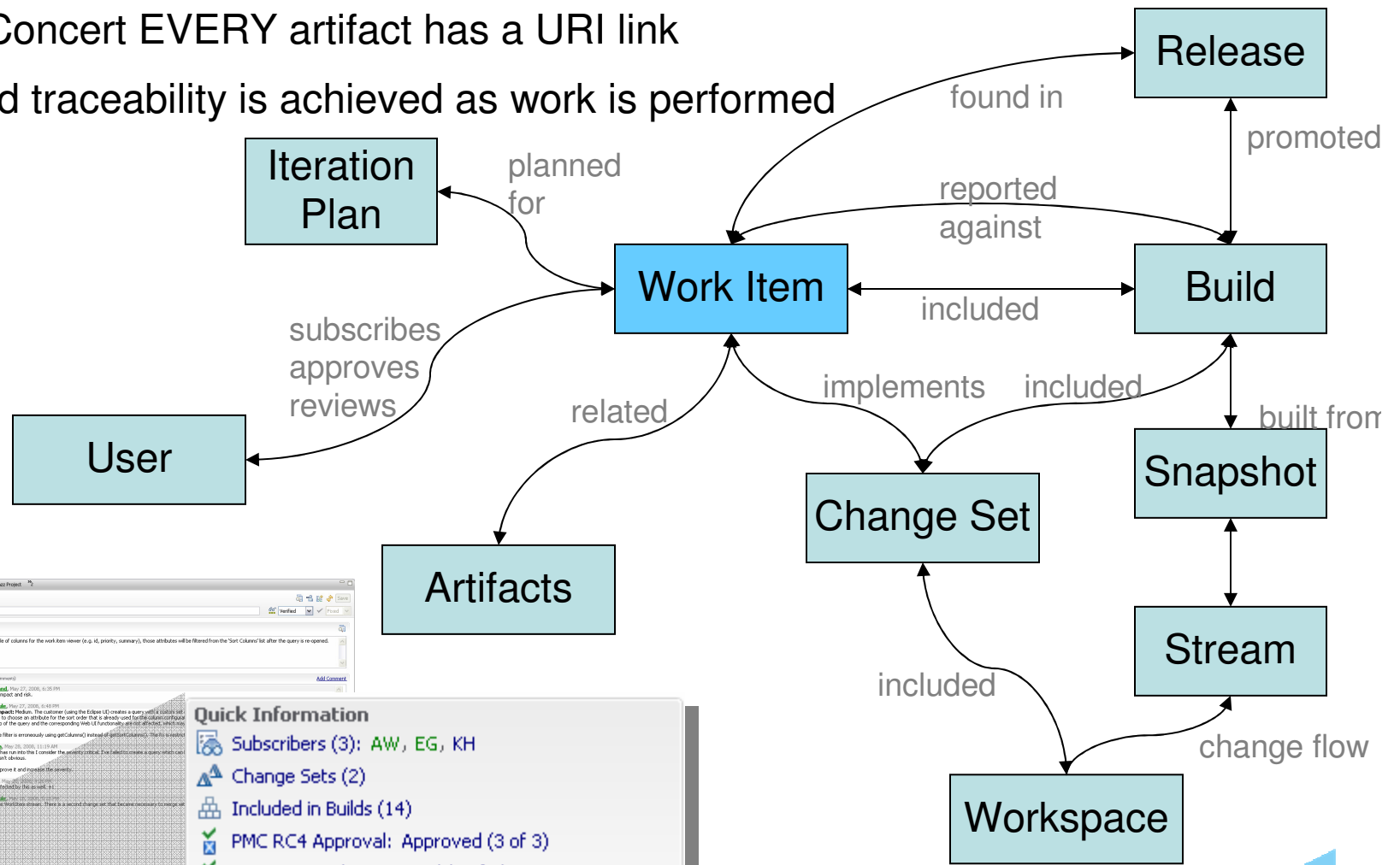


“...we currently use a mix of open source tools, plug-ins and various extensions that provide some integration between these products. **As you might imagine, this causes problems as these tools are not as sophisticated as RTC, and require a careful migration strategy to keep the (limited) integrations working over time.**” *Peter Hendricks Info Support Netherlands*



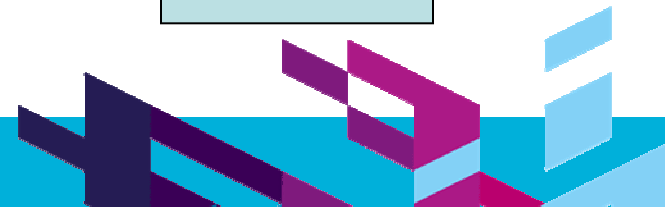
Automated Traceability As Work is Performed

- In Team Concert EVERY artifact has a URI link
- Automated traceability is achieved as work is performed



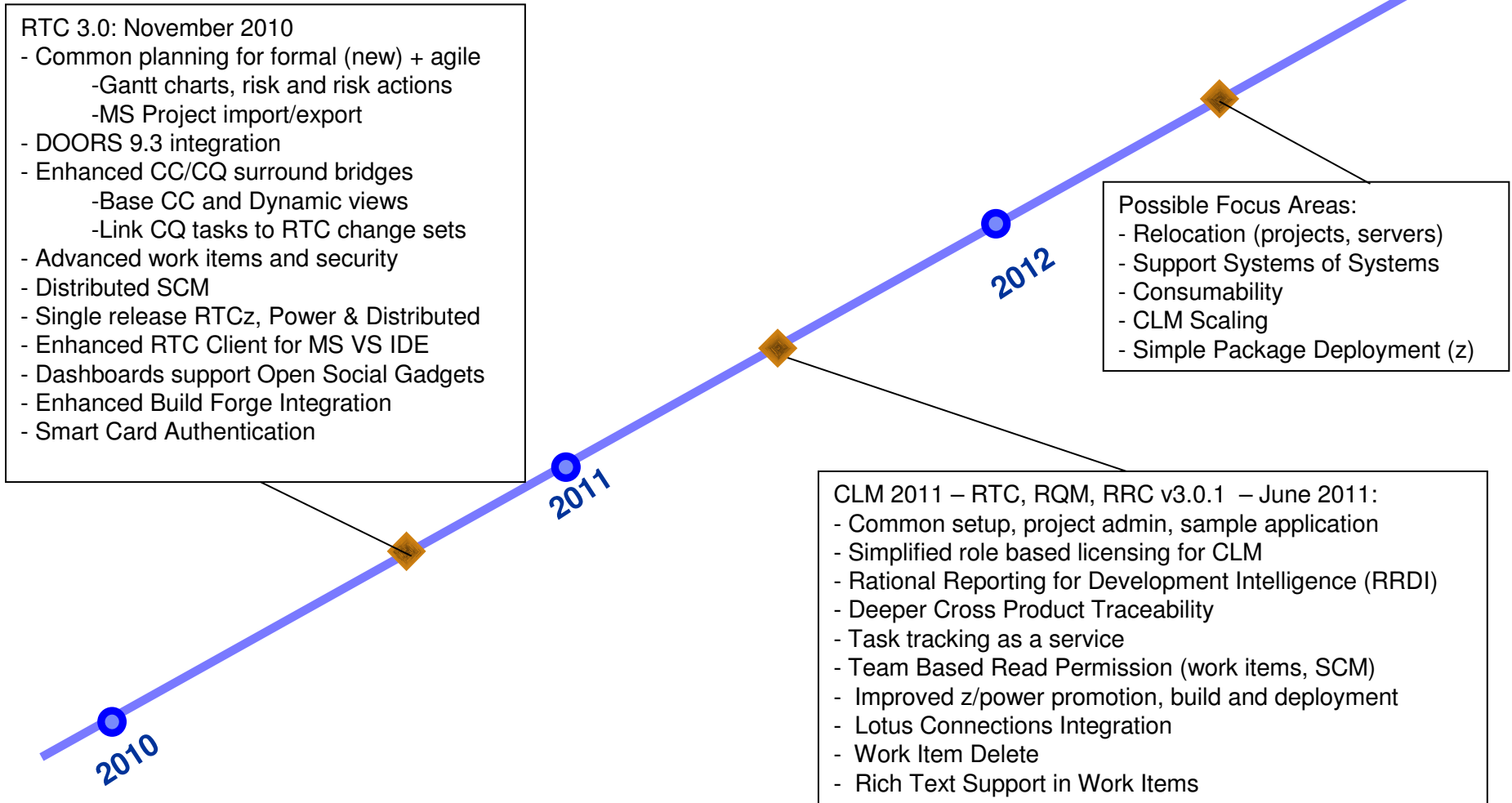
Quick Information

- Subscribers (3): AW, EG, KH
- Change Sets (2)
- Included in Builds (14)
- PMC RC4 Approval: Approved (3 of 3)
- RC4 Approval: Approved (1 of 1)
- RC4_Review: Approved (2 of 2)
- 0.6rc4_Verification: Approved (1 of 1)



Any Plan, Any Process, Any Platform

RTC Delivered 2010/2011



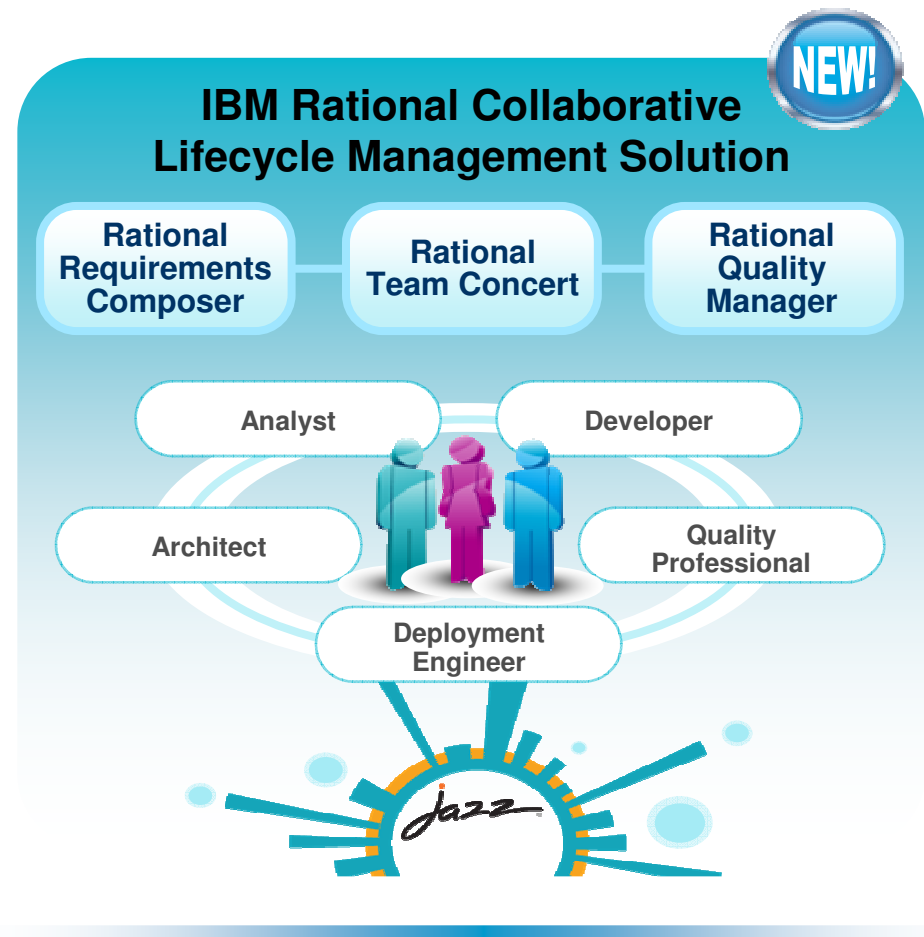
ALM: Consumable & Automated



IBM Rational Collaborative Lifecycle Management Solution

Improve productivity with an integrated ALM solution

- **Optimize your team through support of the 5 ALM Imperatives**
 - Real-time planning
 - Lifecycle traceability
 - In-context collaboration
 - Development Intelligence
 - Continuous Process Improvement
- **Get up and running quickly**
- **Extend as your needs evolve**
- **Support heterogeneous development across multiple platforms and technologies**



What's new in RTC 3.x?

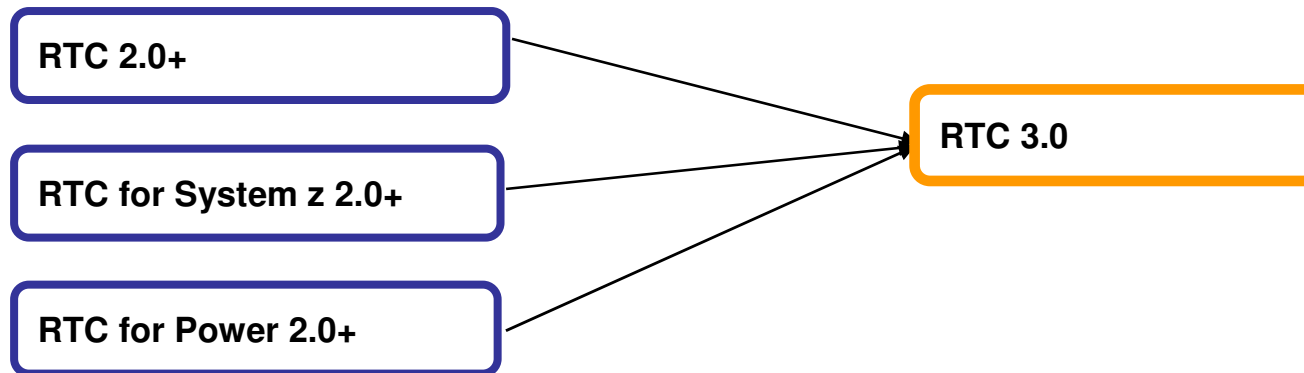
- ***Simplified Packaging for RTC and CLM***
 - *Single Release for All Platforms*
 - *Simpler Packaging and Licensing*
 - *Role Based User Licensing*
 - *Common User Administration*



One Release of Rational Team Concert for All Platforms

Reduce Cost of Ownership and Administration

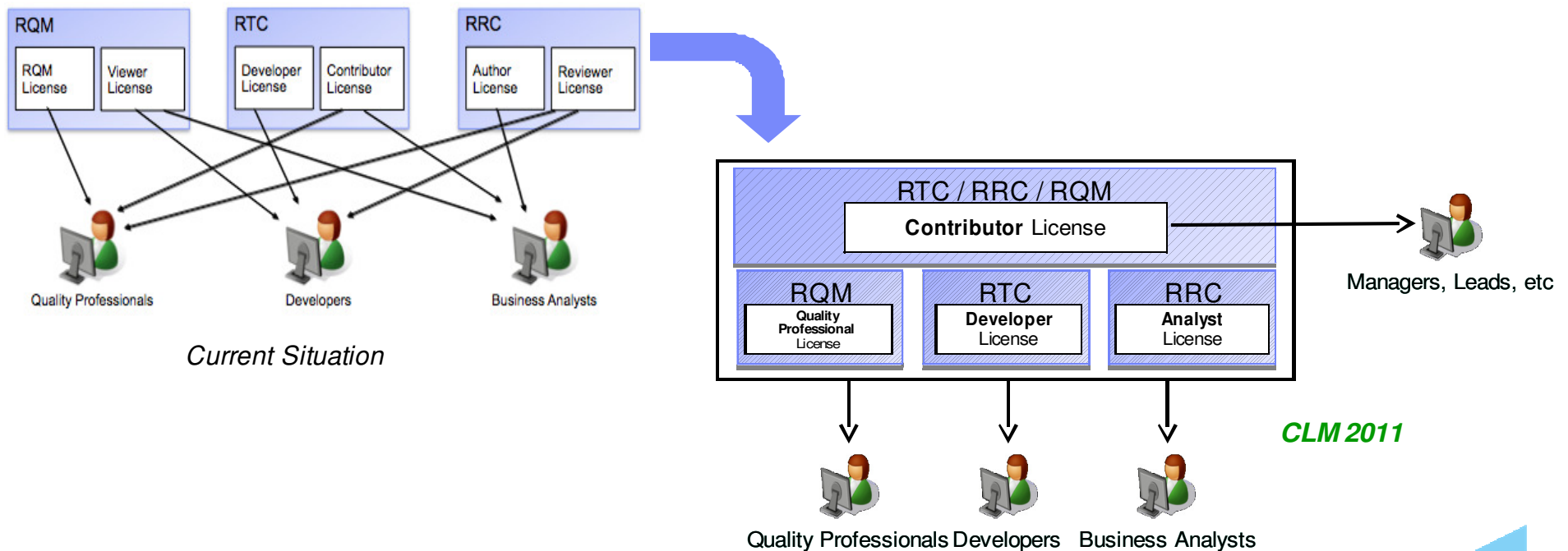
- **All platforms are supported with a single release of RTC 3.0**
 - A new RTC Developer for IBM Enterprise Platforms contains advanced features focused on the needs of System z and IBM i development teams



Simpler Packaging & Licensing – CLM 2011

Reduce Cost of Ownership & Administration

- Removed server based pricing on all applications
- Purchase role-based client licenses
- Licenses have CLM integration built in that provide cross product access (no need to buy additional role-based licenses)



What's New in RTC 3.x?

- ***Improve Cross-Product Visibility and Reporting***
 - *Cross Capability Reporting*
 - *Enhanced Traceability and LifeCycle Queries*
 - *Improved Dashboard Mashups Across CLM*



Cross-capability Reporting

Cross-product Visibility and Reporting

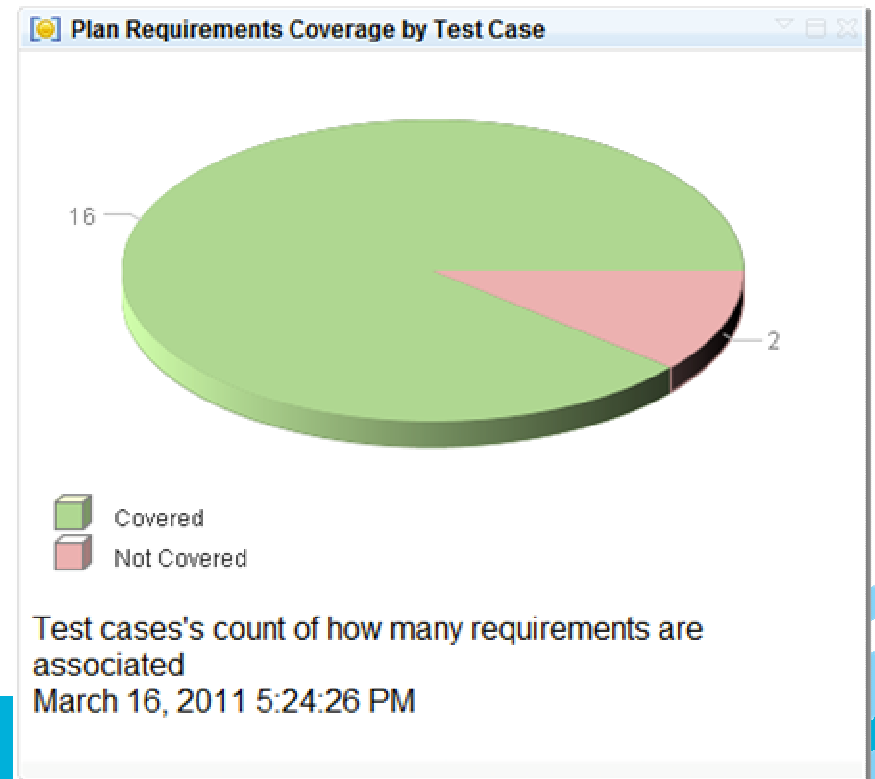
- Traceability reports for a lifecycle project now come out of the box
- We will ship a number of out-of-the-box reports and document templates, implemented in BIRT. In addition, a number of advanced reports, implemented in Cognos, will serve as the basis for customization by end users. The [Out-of-the-box reports](#) page details each of these reports.

Plan Requirements Not Covered Detail

Requirements not covered by test cases

Test plan	Requirement ID	Requirement name	Requirement owner
JKE Banking Release 1	54	Dividend processing payment is a one time transaction.	
	109	The car must stop at the red light	

March 16, 2011 5:24:23 PM



Enhanced lifecycle queries – in Rational Team Concert

Cross-product Visibility and Reporting

Queries ?

My Queries

Shared Queries

Name	Description
▶ Predefined (32)	
▼ Lifecycle Queries (17)	
🔗 Defects affecting Requirements	Open defects that affect requirements
🔗 Defects affecting Tests (current iteration)	Open work items in the current iteration that affect at least one test
🔗 Defects blocking Tests	Open work items that block at least one test
🔗 Defects ready for testing	Work items ready for testing that are associated with tests
🔗 Open Requirement Change Requests	Open change requests that track a requirement
🔗 Plan Items affected by Defects	Plan items that are affected by at least one defect
🔗 Plan Items implementing Requirements	Open work items implementing requirements
🔗 Plan items ready for testing	Plan items ready for testing with associated with tests
🔗 Plan Items tested successfully	Work items associated with tests that do not fail
🔗 Plan Items tested successfully (current iteration)	Work items in the current iteration associated with tests tests that do not fail
🔗 Plan Items with failing Tests	Open work items associated with at least one failing test
🔗 Plan Items with failing Tests (current iteration)	Open work items in the current iteration associated with at least one failing test
🔗 Plan Items with no Requirement	Plan Items not associated with a Requirement
🔗 Plan Items with no Test Case	Plan items without any associated test
🔗 Plan Items with no Test Case (current iteration)	Plan items in the current iteration without any associated test
🔗 Plan Items with Tests not run	Open work items associated with tests that have not been executed
🔗 Plan Items with Tests not run (current iteration)	Open work items in the current iteration associated with tests that not been executed

Use to locate work items

Use on dashboard mashups across applications



Work items as a service

Strengthen Scenario-based integrations

Story 83 ?

Summary: * Donor Chooses Multiple Organizations

Overview Acceptance **Links** Approvals History

Attachments

Add File:

No Attachments.

Links

Add: Children ▾

Tested By Test Case

↳ 30: Allocate Dividends to multiple causes

Children

↳ 89: Analyze impact of this screen flow design

↳ 88: Update the story board to reflect multiple organizations

↳ 86: Update cobol

↳ 85: Implement user interface

↳ 87: Construct test case

Implements Requirement

↳ 117: Donor Chooses Multiple Organizations

Bob's Dashboard Analyst in Composer

General ▾ +

My Tasks

Type Filter Text

« Previous | 1 - 1 of 1 | Next »

ID	Summary	Artifact	State
88	Update the story board to reflect multiple organizations		New

« Previous | 1 - 1 of 1 | Next »

Tanuj's Dashboard Tester in Quality Manager

General ▾ +

My Tasks

Type Filter Text

« Previous | 1 - 1 of 1 | Next »

ID	Summary	Artifact	State
87	Construct test case		New

« Previous | 1 - 1 of 1 | Next »

Team leads improve release quality & predictability

- Proactively respond to gaps as they surface through out the project
- Issues quickly highlighted and resolved

JKE Banking (Change Management) | JTSAdmin

Project Dashboards | Work Items | Plans | Source Control | Builds | Reports

Search Work Items

BRM Sprint 2 (1.0) Plan * ?

26 items: 23 open, 3 closed | Ends in: 10 days

Plan Details [Edit](#)

Planned Items ? | [Links](#) | [Snapshots](#) | [Dashboard](#) | [Notes](#)

View As: Traceability (17 items filtered) [Add Work Item](#)

Actions	Summary	Implements Requirement	Tested By Test Case	Affected by Defect
Issue	Donor Dividend Allocation Criteria	Donor Dividend Allocation Criteria	-Donor dividend allocation conforms to st	-39: Failing Test Ca
	Frequency of dividend transfer	Frequency of dividend transfer	Verify dividend transfer frequency	--
Incomplete	Requests sent in form of email	Requests sent in form of email	--	--
	Organization must identify how much money is de	--	--	--
Complete	Organizations may apply with an initial request	Organizations may apply with an initial request	-Organizations may apply with an initial re	--
	Customers can Nominate an Organization	-Customers can nominate an organization for th	-Customers can Nominate an Organizati	--
	Organization must provide justification for why fun	-Organization must provide justification for why f	-Organization must provide justification fo	Links (2): 1, 2
	Organizations can Apply	Organizations can apply	--	--
	JKE Charity Coordinator will respond to request in	-JKE Charity Coordinator will respond to request	JKE Charity Coordinator responds to onl	--

Dashboards and queries automate status reporting

JKE Banking (Quality Management)

Requirements Planning Construction Lab Management Builds Execution Reports Defects

Search QM Resources

Dashboards

All JKE Banking (Quality Management) Dashboards >

General Lifecycle Test Case State Requirements Tracing Development Defects

Requirements

Information about requirements coverage

Requirement Changes in All Projects (100)

- Donor Chooses Multiple Organizations (117) 3 days ago
- Release 1 Planning (14) 4 days ago
- The car must stop at the red light (116) 4 days ago
- Allocate dividends by Percentage (90) 5 days ago
- Organization must provide justification for why funds are needed (13) 6 days ago
- Organizations can apply (77) 6 days ago
- Donors will receive confirmation and receipt (80) 6 days ago

Page 1 of 10

Development

Alignment with Development

Plan Items with no Requirement (1)

- 70: Support Dividend Processing via Mobile Devices

Plan Items implementing Requirements (17)

- 83: Donor Chooses Multiple Organizations
- 75: Provide a feed for world catastrophic events
- 74: Support Corporate Interface Guidelines
- 68: JKE Charity Coordinator will respond to request in the website triggering
- 67: Donor Dividend Allocation Criteria
- 66: Organizations can Apply
- 64: Donation by amount
- 63: Organization must provide justification for why funds are needed
- 61: Customers can Nominate an Organization

Page 1 of 2

Testing

Test Information

Plan Items with no Test Case (4)

- 83: Donor Chooses Multiple Organizations
- 74: Support Corporate Interface Guidelines
- 70: Support Dividend Processing via Mobile Devices

Plan Requirements Coverage by Test Case

What's New in RTC 3.x?

- **Any Plan, Any Process, Any Platform**
 - *Agile, Formal or Hybrid Planning*
 - *New Distributed SCM*
 - *Enhanced Enterprise Modernization*



Customers want flexible planning : Traditional, Agile, Hybrid

- ***“I have more traditional planning teams using change requests, risks, and a more formal planning and scheduling process. Change is more formal and controlled.***
 - *RTC 3.0 has a new Formal Project Management Process Template out of the box*
- ***“Some of my teams are interested in agile but they want to customize that to support more traditional methods like managing risks and risk actions.***
 - Use Scrum template but add risks and risk action work item types



48% of companies surveyed are using a hybrid of multiple development methodologies, 20% agile, 12% iterative and 11% waterfall. All of them could benefit from the new combined project planning capabilities.



Any Process: Executable and Repeatable

Use ONE tool to support both agile and non-agile

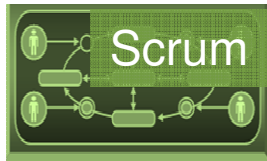


Process Architect

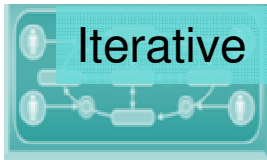


Project Manager

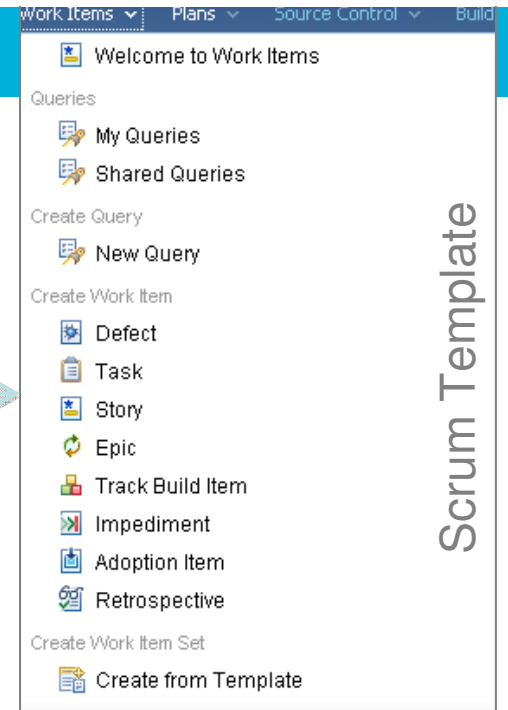
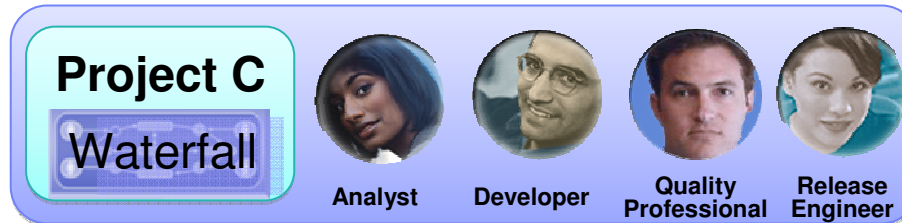
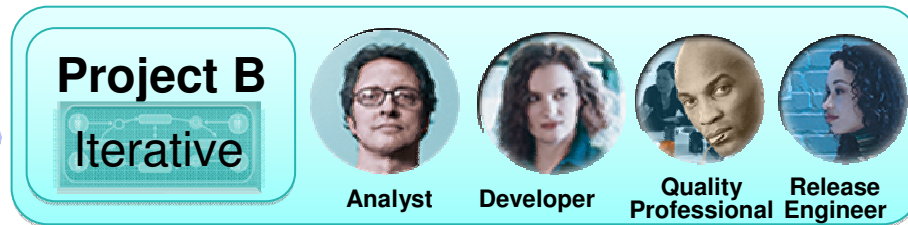
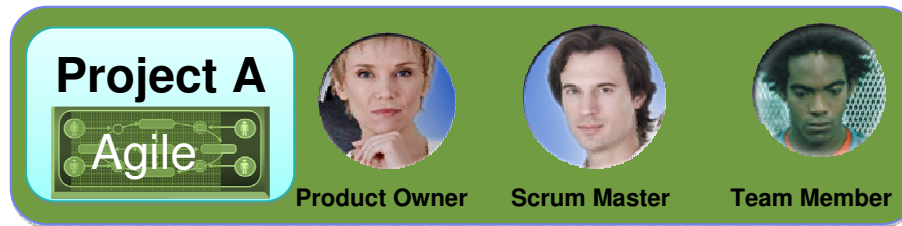
Variant #1



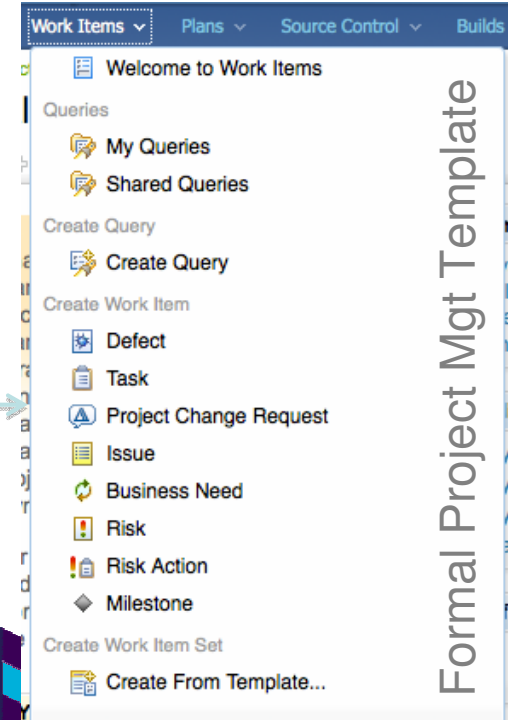
Variant #2



Variant #3



Scrum Template



Formal Project Mgt Template

New Schedule View - Gantt Charts

- Now you can visualize a plan based on a timeline
 - Gantt charts based on schedule constraints and dependencies
 - Shows work breakdown and schedule

Phase Plan Auto-Save Save

Plan Details Edit

Planned Items Links Snapshots Resources Notes

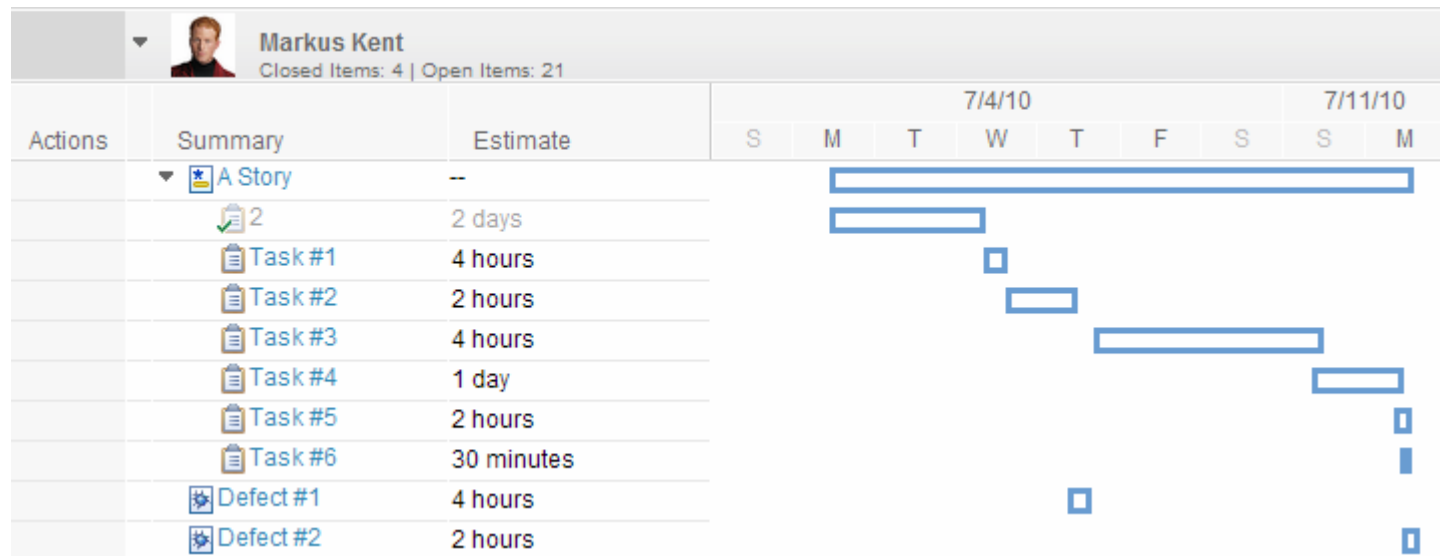
View As: Work Breakdown and Schedule

Actions	Summary	Owned By	Effective Estin	Predecessor	Id
	Write the rules down	Jean-Miche	1 day	-	28
	Add more items to our list	Heather Fr	1 day	-	22
	Create the schedule for the team	Jean-Miche	3 days	-	23
	Write the requirements	Heather Fr	2 days	Task <03:3	21
⚠	Prepare the milestone plans	Heather Fr	2 days	-	24
⚠	Setup more work for the team	Heather Fr	1 week	24: Prepare	26
⚠	WAN access from WTP site is slow - need to invest	Jean-Miche	1 day	-	27



New Schedule View - Roadmap Charts

- **Designed for agile teams**
 - Shows a time projection of a roadmap based on iterations
 - Work items can now be shown as a roadmap on a timeline.
 - The roadmap can also show blocking or depends on relationships between work items



Plan Snapshots - Compare plans over time

- **How has my plan changed over time?**
 - What is the quality of our planning?
 - Did we make our date because we changed the plan and/or our estimates?

Planned Items	Links	Snapshots	Resources	Notes
Back to Snapshots				
		Comparison - Oct 15, 2010 4:53:52 AM	End - Oct 15, 2010 4:53:45 AM	Start - Oct 15, 2010 4:44:47 AM
▼ Overview				
Start Date	0	Oct 15, 2010	Oct 15, 2010	
End Date	8 weeks 3 days 1 hour	Oct 25, 2010	Dec 23, 2010	
Work Items Total	2	5	7	
New	2	4	6	
In Progress	0	0	0	
Closed	0	1	1	
Work Done	6 hours	1 day	1 day 6 hours	
Work Estimated	2 weeks 2 days 4 hours	2 days 4 hours	3 weeks	
Progress	–	8/20 h <div style="width: 40%;"></div>	100% 14/120 h <div style="width: 11%;"></div>	100%
▼ Work Items				
	Modified Items	Added Items	Removed Items	
	Write the requirements	–	Create the schedule for the team	
	Add more items to our list	–	WAN access from WTP site is slow - need to	
	Setup more work for the team	–	–	
	Prepare the milestone plans	–	–	

Customers want to share code changes across businesses

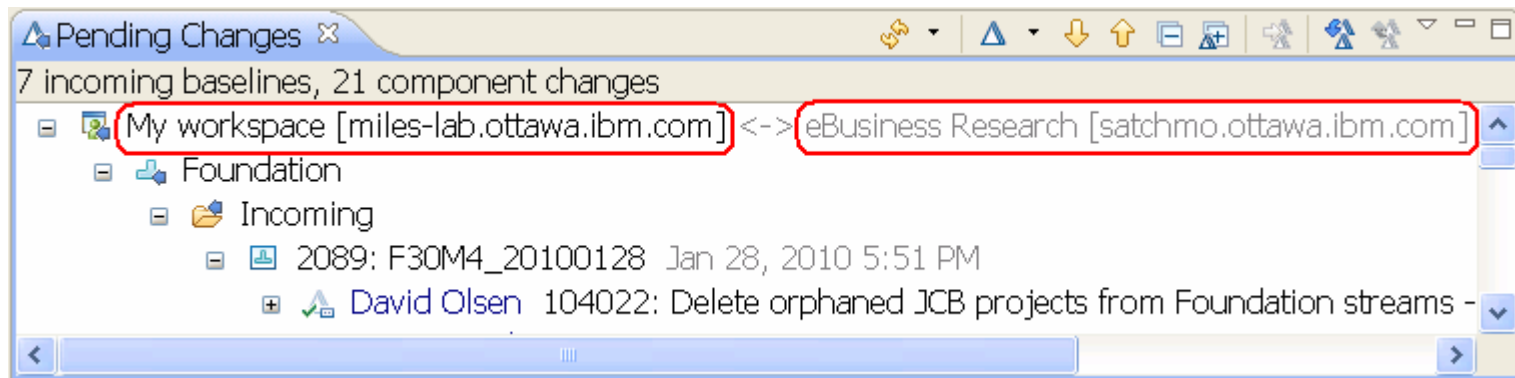
- ***“I need to work with other lines of business and even outside suppliers who need to share component code changes across RTC servers.”***
 - RTC 3.0 supports Distributed SCM across multiple RTC 3.0 servers.
- ***“I need cross repository work item associations for my scm change sets.”***
 - *RTC 3.0 can now associate SCM change sets with any work items in any RTC server or with ClearQuest (since it is an OSLC Change Management provider)*



Distributed SCM for Enterprise Customers

- **Distributed source control**

- You can now flow components and change sets between workspaces hosted on different repositories.
- Rather than clone an entire repository for distributed SCM, **we clone just the components you need.**



- ▶ More Technical Details:

- ▶ [Jazz Source Control Design Objectives](#)
- ▶ [Remote Development Pattern works across RTC 3.0 servers now](#)

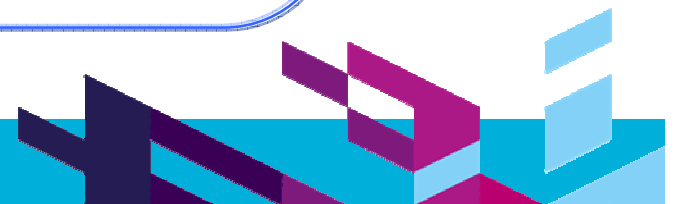
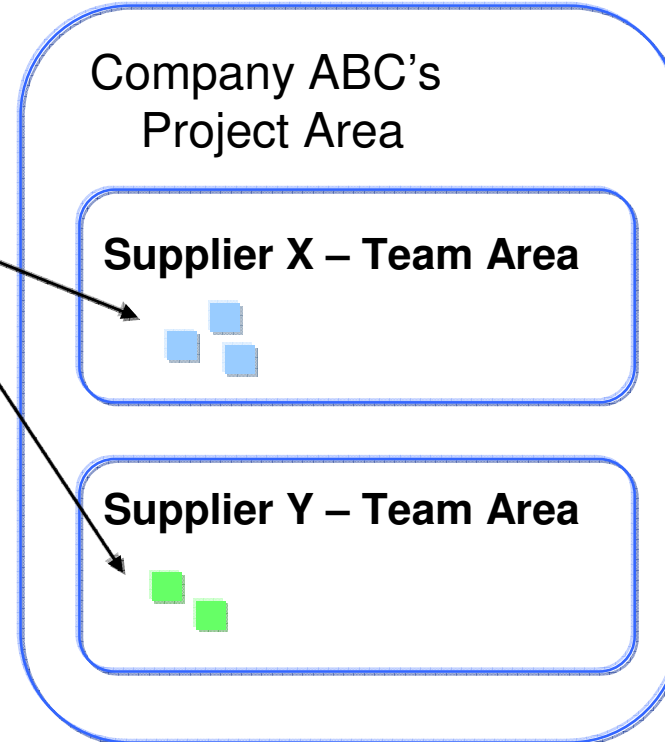


Work Item Read Permissions at Team Area Level

- ***“I want multiple development teams in a single project area to be able to isolate work from one another”***

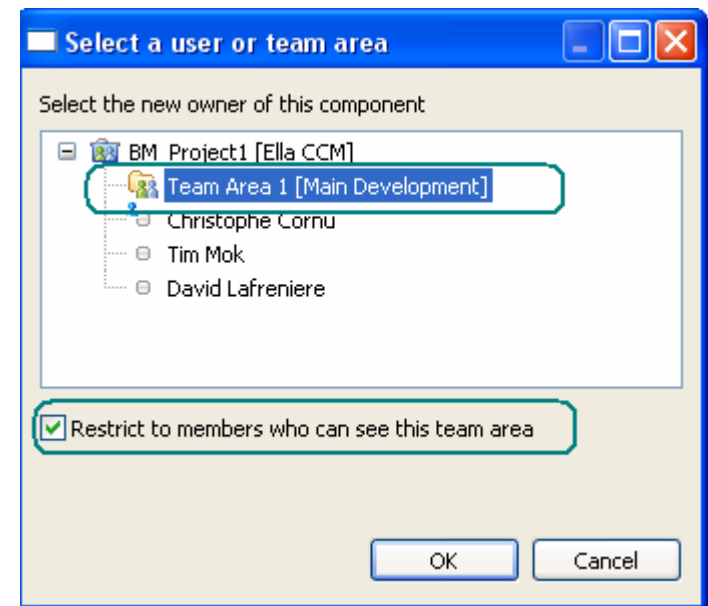
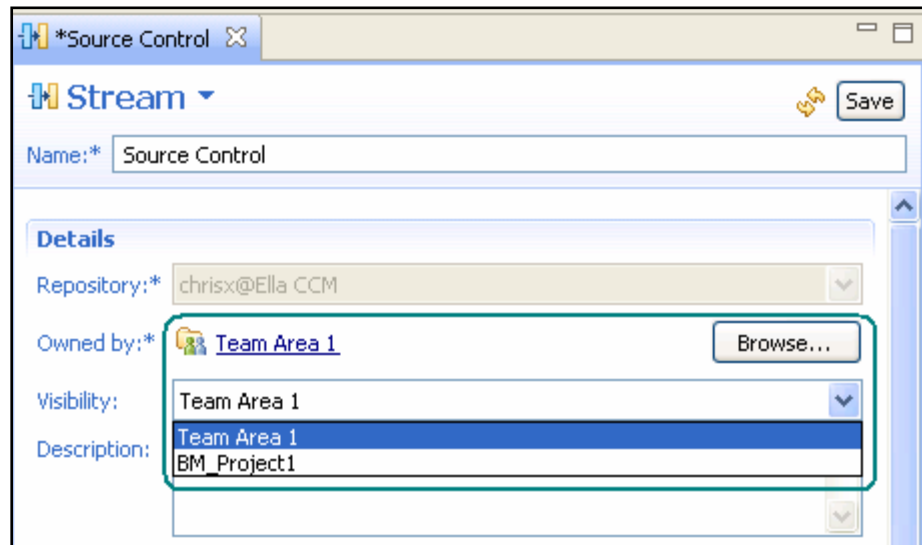
- Example Use case:
Each supplier has a team area
Each member of that team area
Can read work items in their team
area but not in the others.

Company ABC can read all
work items in all team areas
under their Project Area



Restrict visibility of SCM Components and Streams

- ***“I want multiple development teams in a single project area to be able to isolate work from one another”***

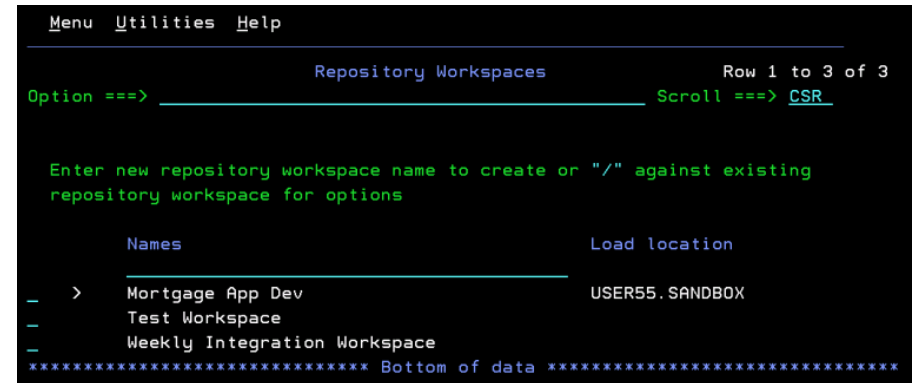


- You can now have components and streams private to a team area.

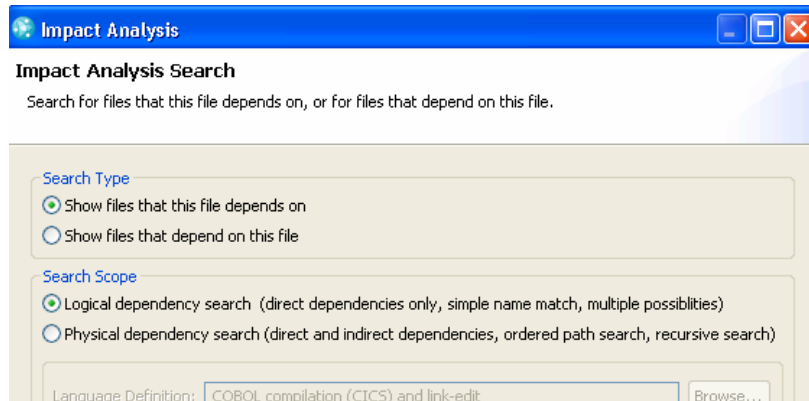


IBM Enterprise Platforms Enhancements

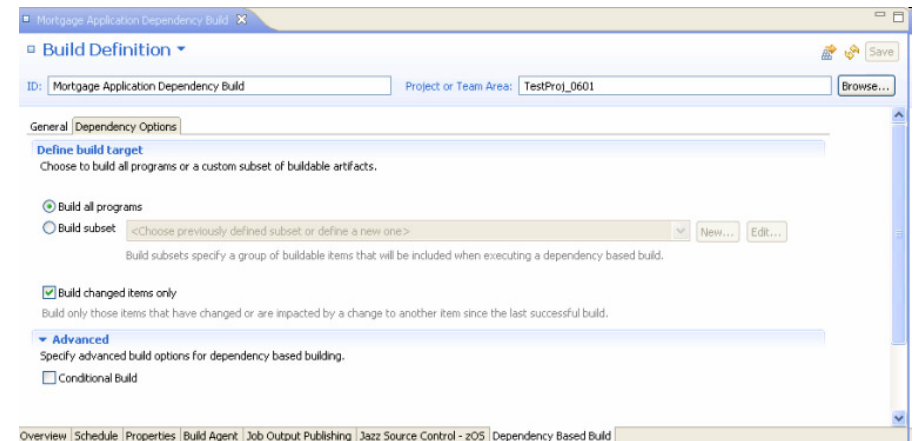
- UI for “Green Screen” ISPF RTC SCM client users (in all variants of RTC Developer)
- Build dependency and impact analysis for z/OS and IBM i development
- Support work item based promotion model (z/OS and IBM i)
- Deployment Support for z/OS, IBM I, UNIX and Linux systems



ISPF SCM Client



Impact Analysis



Dependency based build



What's New in RTC 3.x?

- **Integrations and Open Dashboards**
 - *Enhanced RTC Client for Visual Studio IDE Integration*
 - *Enhanced ClearCase/ClearQuest & Synergy/Change*
 - *DOORS Integration*
 - *New Lotus Connections Integration*
 - *New Tivoli TSRM Integration (from Tivoli)*
 - *New Partner Integrations – Many OSLC Based*



First Class Experience for Developers using Visual Studio

For planning, collaboration, process, traceability, project status, SCM, builds and CLM

Distributed SCM (across RTC repositories)

Annotate, Rich History View, Visual Merge

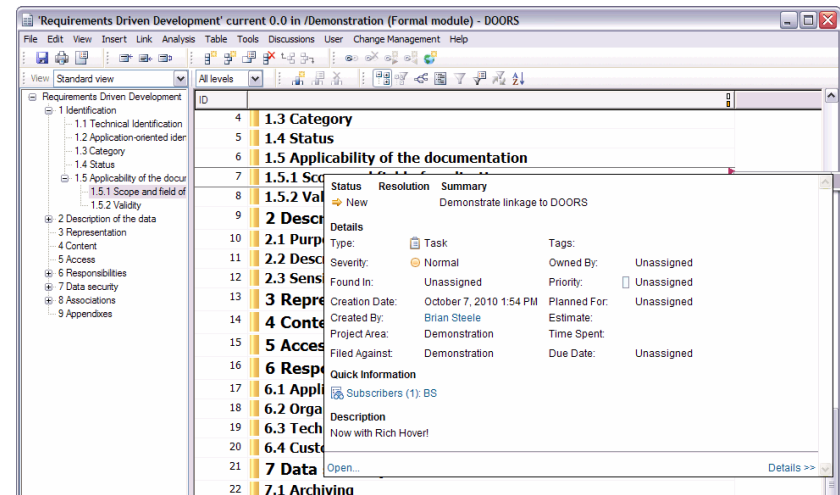
CI Build traceability
MS-Build, dev/env

CLM Linking to Requirements, Test Cases and Rich Hovers!

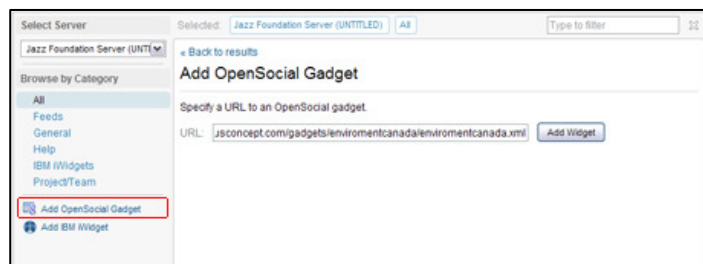


Enhanced Open Integrations With Tools You Use Today

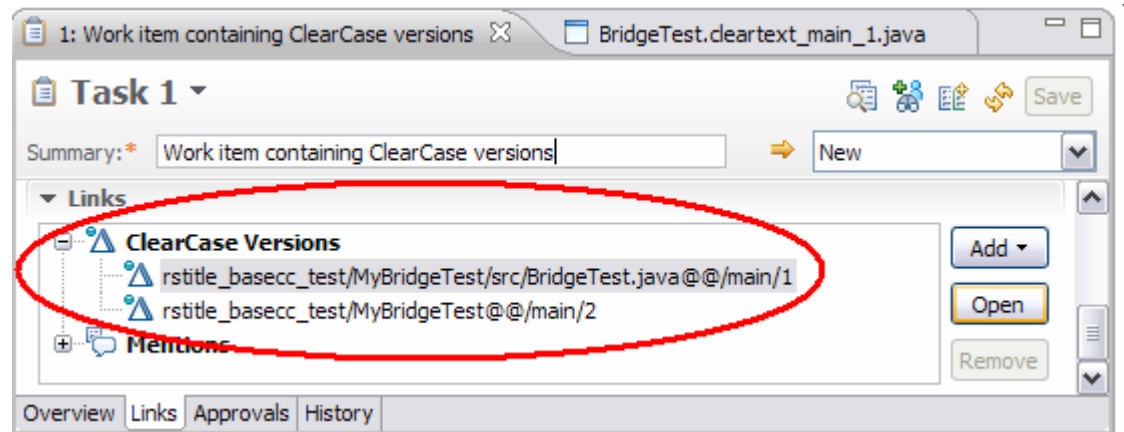
- DOORS 9.3 Integration for Requirements Driven Development
- Enhanced Build Forge Integration
- Base ClearCase and Dynamic View support in ClearCase Bridge
- Ability to link ClearQuest change requests to RTC change sets (SCM)
- Open dashboards with Open Social gadget support (Google, RAM, etc.)



Rich hover in DOORS showing a related Work Item



Open Social Widget Support: Google, Rational Asset Manager and RTC Can now share dashboard mashups



Base ClearCase and Dynamic View traceability to RTC work items

Lotus Connections Integration

Link Projects in RTC to Communities in Lotus Connections



Active Project Areas >

Sample Project Save

Overview Timelines Roles Permissions Access Control **Social Network**

Social Network

Each project can be associated with a social network community on either Lotus Connections. A community and its feed will be visible in the Social Network viewlet. Existing and new Jazz projects are also automatically added to the associated community.

Community: **Lotus Connections**

This a community for people interested in providing feedback about the Lotus Connections product. It will have a companion activity for posting feedback and will share bookmarks that are relevant.

Browse...

Communities

Search All Communities

Less ▶ More

business collaboration communications community connections deutsch development domino education fun government ibm innovation it linux lotus management marketing notes portal pot quickr sametime social social-networking test testing university web web2.0

View: All Communities Tagged: lotus

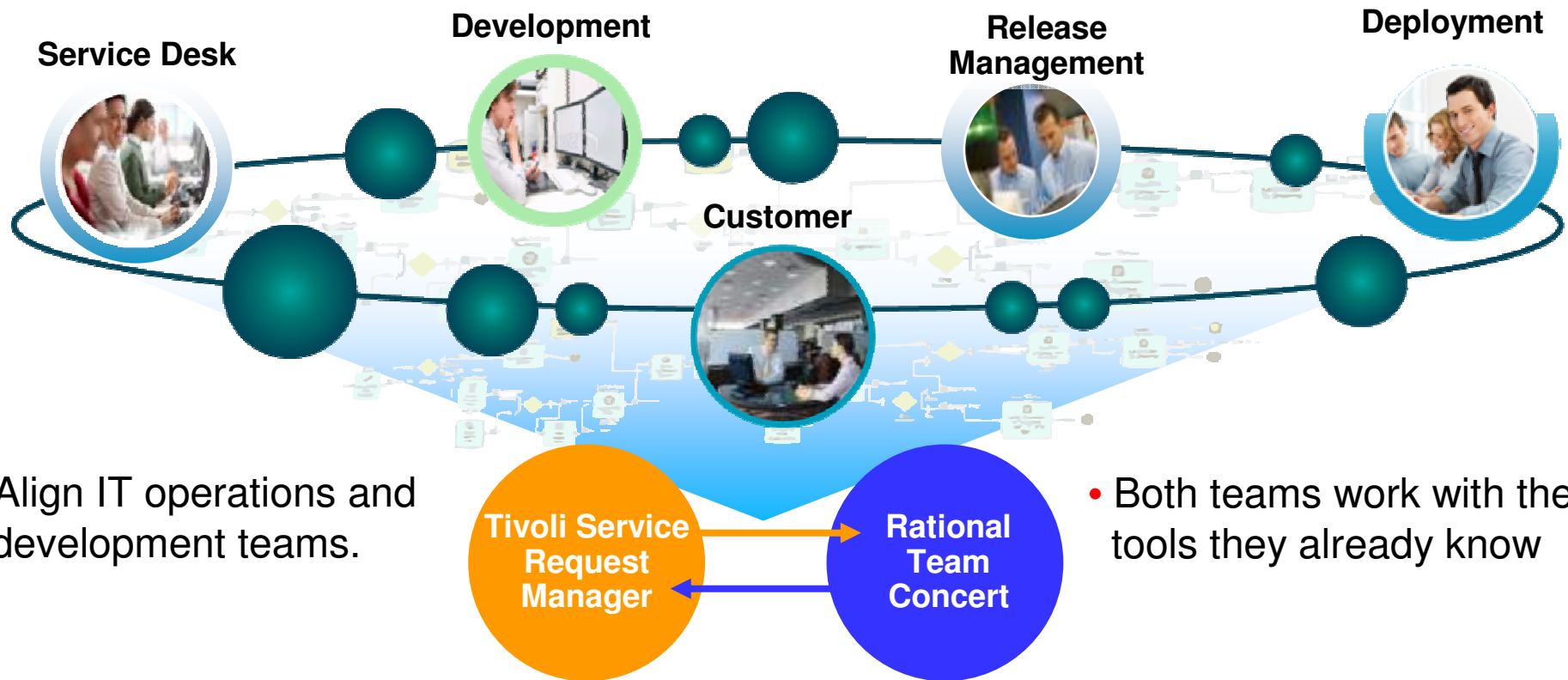
Cross Country Lotus User Group
38 members | Tags: canada caribbean group lotus user | 🔗
Welcome to the Cross Country Lotus User Group Community! The Cross Country Lotus User Group is an organization consisting of Lotus professionals, (administrators, developers, users, business partners, and IBM'ers) across Canada and the Caribbean.

Lotus Quickr Community
437 members | Tags: lotus quickr web2.0 | 🔗
This is a community for people interested in Lotus Quickr

UK FSS Tech Sales
8 members | Tags: information-management lotus rational tivoli websphere | 🔗
Technical Sales Specialists from all IBM Software Group brands

Communities in an RTC Dashboard Viewlet

Link Operations and Development – OSLC Based Integrating Tivoli Service Request Manager with Team Concert











- Align IT operations and development teams.

- Both teams work with the tools they already know

Try it here: ISML Deliverable and Documentation : <http://www-01.ibm.com/software/brandcatalog/ismlibrary/details?catalog.label=1TW10SR0V>



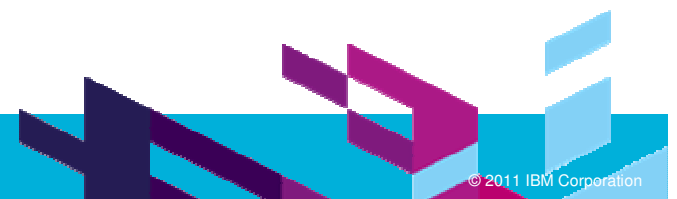
New or Improved Integrations with Rational Team Concert

- HP Quality Center  
 - ▶ BSD Group - Synchronization and OSLC Bridge between RTC and HP Quality Center
 - ▶ Tasktop - OSLC based linking and task aggregation with RTC and HP Quality Center
- Project and Portfolio Management  
 - ▶ PlanView - Integrate Enterprise Project Plans to RTC Release and Iteration Plans
 - ▶ Ascendant Technology - Integrate Microsoft Project Planning to RTC Release and Iteration Plans
- Mobile Application Development 
 - ▶ Worklight - Studio IDE for mobile app development integrated with Rational Team Concert, enabling centralized multi-platform builds
- Open Source Compliance Management 
 - ▶ Protecode - BuildAnalyzer - Analyzing source for open source license implications
- Productivity Tools  
 - ▶ Prolifics - Accelerate Continuous Build Integration for WebSphere applications
 - ▶ Rocket Gang - Work Item Visualizer

QUESTIONS



www.ibm.com/software/rational





www.ibm.com/software/rational

© Copyright IBM Corporation 2011. All rights reserved. The information contained in these materials is provided for informational purposes only, and is provided AS IS without warranty of any kind, express or implied. IBM shall not be responsible for any damages arising out of the use of, or otherwise related to, these materials. Nothing contained in these materials is intended to, nor shall have the effect of, creating any warranties or representations from IBM or its suppliers or licensors, or altering the terms and conditions of the applicable license agreement governing the use of IBM software. References in these materials to IBM products, programs, or services do not imply that they will be available in all countries in which IBM operates. Product release dates and/or capabilities referenced in these materials may change at any time at IBM's sole discretion based on market opportunities or other factors, and are not intended to be a commitment to future product or feature availability in any way. IBM, the IBM logo, Rational, the Rational logo, Telelogic, the Telelogic logo, and other IBM products and services are trademarks of the International Business Machines Corporation, in the United States, other countries or both. Other company, product, or service names may be trademarks or service marks of others.