

# Tap into the cloud with Lotus Notes and Domino software



## Get the power of Lotus Notes and Domino software with the benefits of the cloud

It's no surprise that a lot of decision makers are looking to cloud solutions for moving commodity email and collaboration applications into easier-to-manage environments. Making smarter use of limited funds is a constant need for IT organizations. And the cloud has proven an ideal solution because it enables organizations to do the following:

- Offload server infrastructure management responsibilities
- Eliminate upgrade cycles and quickly take advantage of new capabilities as they become available
- Realize more flexible and predictable costs—adapting collaboration to the needs of the business
- Separate mail and application environments for more flexible licensing and deployment options

IBM now provides IBM Lotus Notes® and IBM Lotus® Domino® capabilities via the cloud, so you can reduce the time-consuming, costly tasks associated with managing messaging and collaboration environments and focus on more strategic tasks.

## IBM LotusLive Notes: full-featured, email, calendar and contact management

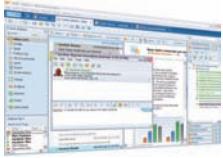
IBM LotusLive Notes™ services, which are delivered through the cloud, enable you to deploy comprehensive, leading-edge messaging capabilities for a low up-front investment:

- Award-winning email and online collaboration capabilities that can be accessed by your users from their computers, as well as most popular smart phones and devices
- Robust calendaring and scheduling tools
- Business instant messaging that enables users to chat with colleagues in real time



- Options for customized mail routing
- Monitoring capabilities
- Optional mobile support for Apple iOS, Research In Motion (RIM) BlackBerry, Symbian, Microsoft Windows Mobile and Android devices

Moreover, the service not only is underpinned by security-rich features that are designed to protect critical enterprise data, but also can be integrated seamlessly with existing on-premises Lotus Notes and Domino deployments for optimal flexibility.



## Lotus Domino Utility Server for LotusLive: cloud applications

Lotus Domino Utility server for LotusLive™ services enables you to move your Lotus Domino applications to cloud-based delivery, so you can simplify your environment and separate licensing from your messaging solution. The services allow you to move from a per-user to a per-server licensing model, allowing you to cost-effectively extend use of Lotus Domino applications. You can choose to move all of your Lotus Domino applications to the cloud or continue to run select applications onsite as needed. With the flexibility to evaluate applications separately from your messaging environment, you can assess them more accurately. Additionally, you can address your unique business needs through a choice of cloud models, including the following:

- IBM Smart Business Cloud—provides pay-as-you-go pricing options on a prebuilt Lotus Domino Linux 8.5.1 server, with a choice of public or private connections
- Amazon Elastic Compute Cloud (EC2)—gives you the option to use your own Lotus Domino license in a public cloud

### For more information

For more information about IBM LotusLive Notes and IBM Lotus Domino Utility Server for LotusLive services, contact your local IBM representative or visit: [ibm.com/software/lotus/notesanddomino](http://ibm.com/software/lotus/notesanddomino)

Additionally, financing solutions from IBM Global Financing can enable effective cash management, protection from technology obsolescence, improved total cost of ownership and return on investment. Also, our Global Asset Recovery Services help address environmental concerns with new, more energy-efficient solutions. For more information on IBM Global Financing, visit: [ibm.com/financing](http://ibm.com/financing)



© Copyright IBM Corporation 2011

IBM Corporation  
Software Group  
Route 100  
Somers, NY 10589  
U.S.A.

Produced in the United States of America  
July 2011  
All Rights Reserved

IBM, the IBM logo, [ibm.com](http://ibm.com), and Lotus are trademarks of International Business Machines Corp., registered in many jurisdictions worldwide. Other product and service names might be trademarks of IBM or other companies. A current list of IBM trademarks is available on the web at “Copyright and trademark information” at [ibm.com/legal/copytrade.shtml](http://ibm.com/legal/copytrade.shtml)

Linux is a registered trademark of Linus Torvalds in the United States, other countries, or both.

Microsoft is a trademark of Microsoft Corporation in the United States, other countries, or both.

The trademarks Research In Motion, RIM, and BlackBerry are owned by Research In Motion Limited and are registered in the United States and may be pending or registered in other countries. IBM is not endorsed, sponsored, affiliated with, or otherwise authorized by Research In Motion Limited.

References in this publication to IBM products or services do not imply that IBM intends to make them available in all countries in which IBM operates.

The information contained in this documentation is provided for informational purposes only. While efforts were made to verify the completeness and accuracy of the information contained in this documentation, it is provided “as is” without warranty of any kind, express or implied. In addition, this information is based on IBM’s current product plans and strategy, which are subject to change by IBM without notice. IBM shall not be responsible for any damages arising out of the use of, or otherwise related to, this documentation or any other documentation. Nothing contained in this documentation is intended to, nor shall have the effect of, creating any warranties or representations from IBM (or its suppliers or licensors), or altering the terms and conditions of the applicable license agreement governing the use of IBM software.

IBM customers are responsible for ensuring their own compliance with legal requirements. It is the customer’s sole responsibility to obtain advice of competent legal counsel as to the identification and interpretation of any relevant laws and regulatory requirements that may affect the customer’s business and any actions the customer may need to take to comply with such laws.



Please Recycle