

IBM Lotus Symphony software.

A no-charge way to create, edit and share documents, spreadsheets and presentations



IBM Lotus® Symphony™ software is a set of intuitive, easy-to-use applications for creating, editing and sharing documents, spreadsheets and presentations. Available at no cost to you, Lotus Symphony software provides the functionality you need to perform the most common document creation and editing tasks, making it ideal for business and personal projects alike.

Available at no charge — no kidding

Tired of paying for software upgrades and functionality you don't use? Lotus Symphony applications are available at no charge. But “no charge” doesn't mean low value. Lotus Symphony applications *work*, delivering the safety, reliability and features you need, while freeing you from the high costs of proprietary software.

Three new alternatives to proprietary solutions that can save you money

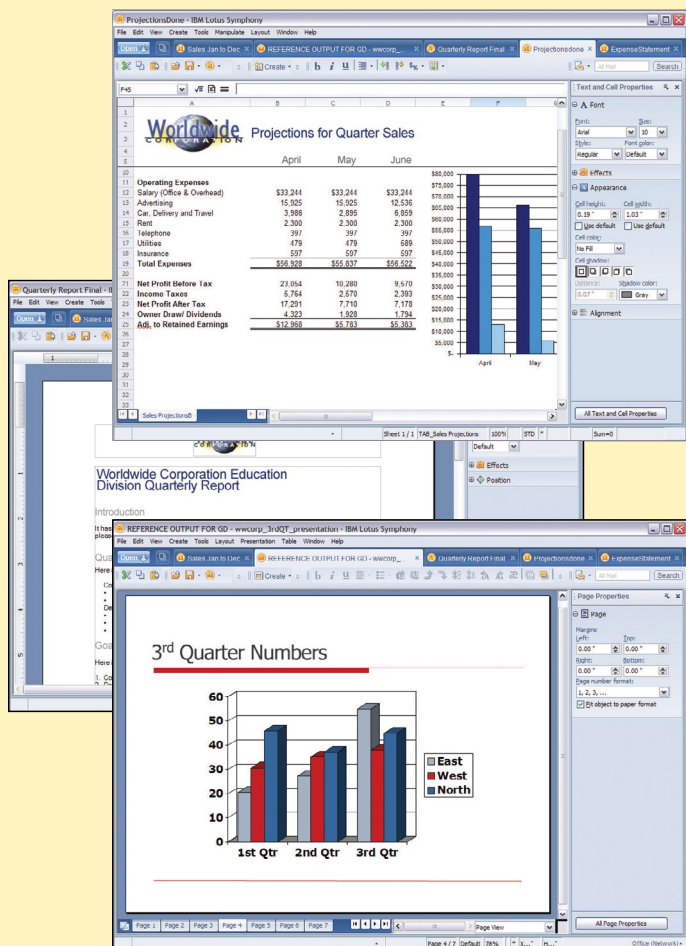
For many organizations, Lotus Symphony software can be an effective alternative to Microsoft® Office applications. Lotus Symphony software—IBM Lotus Symphony Documents, IBM Lotus Symphony Spreadsheets and IBM Lotus Symphony Presentations—can provide the majority of employees with the day-to-day capabilities they need to do their jobs and help companies reduce licensing costs.

Get everything you need, plus everything you're used to

With Lotus Symphony software, you get the functionality you need to create, edit and share simple to complex business documents. Common capabilities can be accessed from clear and elegant interfaces and toolbars that are intuitive and easy to use.

Speak your mind through IBM's Web-based community

Have a question? Need support? Want the latest buzz? You can get what you need, quickly and easily, using the Web-based Lotus Symphony community. Talk and exchange ideas, share hints and tips, download clip art and templates from the gallery, and get feedback and news directly from Lotus Symphony development teams.



Format files your way, on the platform of your choice

IBM designed Lotus Symphony software to let you import, edit and save a variety of file formats, including files created in Microsoft Office and IBM Lotus SmartSuite® applications. You can even convert and export your files using Adobe® Portable Document Format (PDF) files. The tools work with computers running in Microsoft Windows®, Apple Mac OS X (Intel® processors only) and Linux® environments.

Gain control over the future of your documents

Lotus Symphony solutions are based on the Open Document Format (ODF) file format for electronic documents. ODF-supported applications help ensure that your documents are accessible and usable well into the future. Moreover, you're not locked into proprietary file formats, software licensing agreements and upgrades. And because no one needs to purchase applications to open and read the documents, the ODF standard also makes it easier to share information with other people and organizations.

Create composite applications with a tiered API model and Eclipse plug-in support for enhanced flexibility

Lotus Symphony software leverages a tiered application programming interface (API) model to give you the flexibility to meet your needs—whether you're building a simple plug-in to launch a Lotus Symphony document from another application, or you're creating a more sophisticated solution like one that manipulates data in a Lotus Symphony spreadsheet from an inventory database.

APIs based on Eclipse allow you to easily open, access and close any of the Lotus Symphony applications. Editor ViewPart APIs go further and allow you to call load and save functions from Lotus Symphony software; access content generated by Lotus Symphony software for use in applications; and even customize the user interface for a particular solution.

For more information

To learn more and to download IBM Lotus Symphony software at no cost, please visit:

ibm.com/software/lotus/symphony



© Copyright IBM Corporation 2009

Lotus Software
IBM Software Group
One Rogers Street
Cambridge, MA 02142
U.S.A.

Produced in the United States of America
June 2009
All Rights Reserved

IBM, the IBM logo, Lotus, and Symphony are trademarks or registered trademarks of International Business Machines Corporation in the United States, other countries or both.

Adobe is a registered trademark of Adobe Systems Incorporated in the United States, and/or other countries.

Intel is a registered trademark of Intel Corporation or its subsidiaries in the United States and other countries.

Microsoft and Windows are trademarks of Microsoft Corporation in the United States, other countries, or both.

Linux is a registered trademark of Linus Torvalds in the United States, other countries, or both.

Other company, product, or service names may be trademarks or service marks of others.

References in this publication to IBM products and services do not imply that IBM intends to make them available in all countries in which IBM operates.

The information contained in this documentation is provided for informational purposes only. While efforts were made to verify the completeness and accuracy of the information contained in this documentation, it is provided "as is" without warranty of any kind, express or implied. In addition, this information is based on IBM's current product plans and strategy, which are subject to change by IBM without notice. IBM shall not be responsible for any damages arising out of the use of, or otherwise related to, this documentation or any other documentation. Nothing contained in this documentation is intended to, nor shall have the effect of, creating any warranties or representations from IBM (or its suppliers or licensors), or altering the terms and conditions of the applicable license agreement governing the use of IBM software.