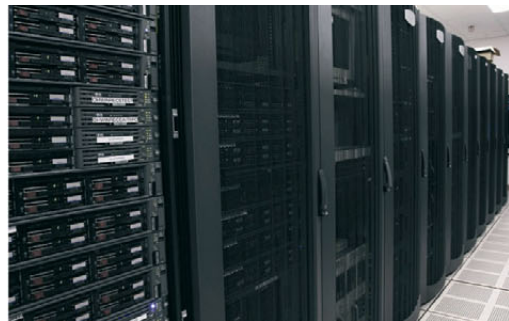
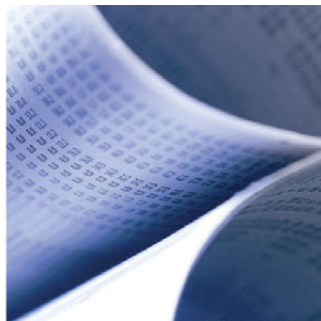


IBM Proventia Management SiteProtector system



Highlights

- *Helps simplify security management and generate cost efficiencies*
- *Enhances communication of security and regulatory risk*
- *Designed to provide immediate and strong resilience in case of a disaster*

Extending security management capabilities to ease reporting

Heightening security threats and compliance requirements can translate into multiple management systems to learn, patterns to analyze and reports to create. Over time, the cost and complexity of managing security can rise substantially, without a corresponding decrease in exposure to security risks and noncompliance.

IBM Internet Security Systems™ (ISS) offers a flexible, one-stop security management solution that can scale as your needs evolve. From a single interface,

IBM Proventia® Management SiteProtector™ system helps you command the security devices and policies required to monitor your exposure to vulnerabilities and accurately report your security posture. Greatly expanded analyzing and reporting capabilities can enable you to customize templates, analyze threat patterns and quickly generate proof of compliance. And in the event of a hardware failure, superior resiliency capabilities can help you maintain policies and settings.

Simplifying security while improving cost-effectiveness

By consolidating management of your entire security infrastructure, the SiteProtector system extends the reach and ability of a single administrator to perform numerous functions on multiple devices from one console—including allowing you to add devices as your needs grow. In addition to helping you save time and money on security management, the SiteProtector system enables you to perform more complex security analyses and reports to enhance your business intelligence.

For example, you can create a specific analysis of critical information based on any number of filters, and then immediately convert it into a report to share internally or prepare it for auditors.

The SiteProtector dashboard provides at-a-glance status on current threat events, their severity, their sources and your overall system health, as shown in Figure 1.

Enabling flexible, customizable reporting to enhance communication

The business intelligence and reporting toolkit (BIRT) allows you to literally do more with less: more detailed and extensive reporting creation and design

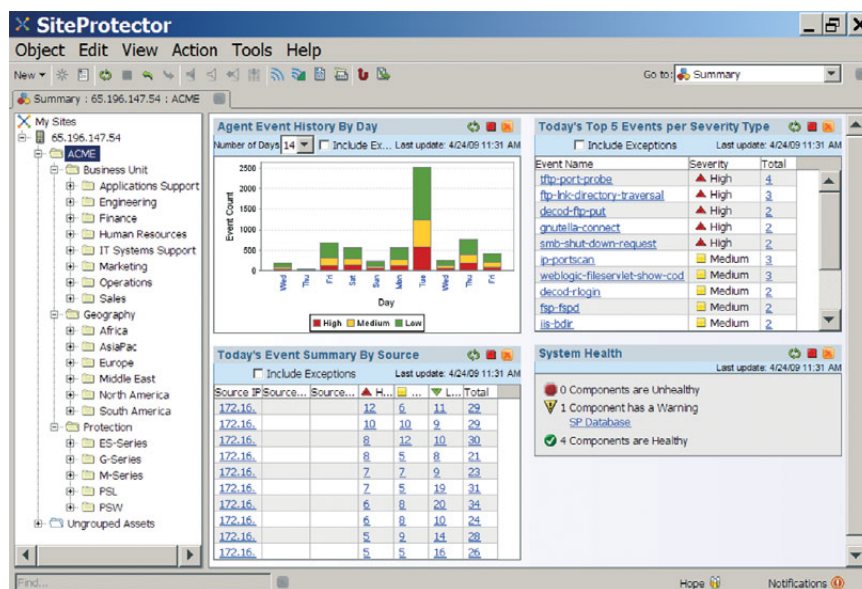


Figure 1. At-a-glance status of your overall system security from a single console

with far less effort. Carefully designed around the user experience to empower security teams to quickly, easily and recurrently meet compliance requirements, BIRT functions as an open user community where reports can be posted, modified and shared to leverage the intelligence gathered from and the creativity of the user community. The SiteProtector reporting solution combined with the BIRT community provides flexibility and customization, enabling you to:

- Build your own or use default reports
- Customize the report perspective (for example, where attacks originated)

- Share report templates with the SiteProtector user community
- Re-label and describe reports for different audiences
- Select appropriate asset groups to report on
- Filter and sort based on all available criteria

From the SiteProtector dashboard, you can create a custom report or use one of the default templates to create a report based on any number of criteria, such as top events as shown in Figure 2.

You can create detailed reports to analyze your security posture and use the intelligence to proactively defend your system against attacks. Figure 3 shows part of a report that indicates the top 10 specific sources of attack.

Providing resiliency and robust growth capability

For security and compliance officers who need the highest level of resiliency, the SiteProtector system provides an effective means to help quickly recover policies and settings in case of a hardware failure or other disaster—and the flexibility to evolve as needs change. SiteProtector can automatically transfer the latest configuration settings to a secondary instance with minimal downtime. In addition, SiteProtector pre-allocates disk space to archive security events using a structured file format that enables easy migration, storage, backup and recovery. As your security or compliance requirements expand, SiteProtector can help protect your investment through the ability to add security controls and devices as your business dictates, without increasing your total cost of ownership.

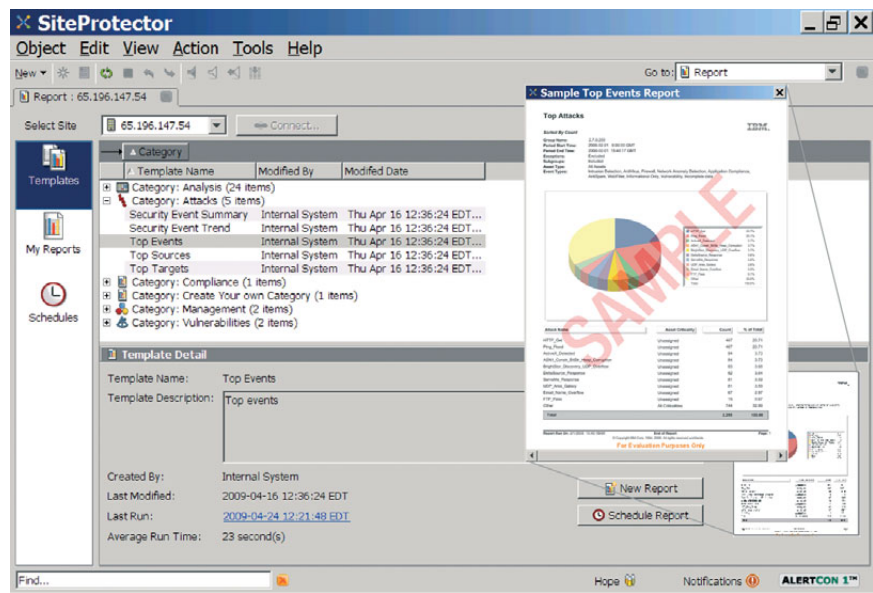


Figure 2. Reader friendly reports help simplify proof of compliance by a single click

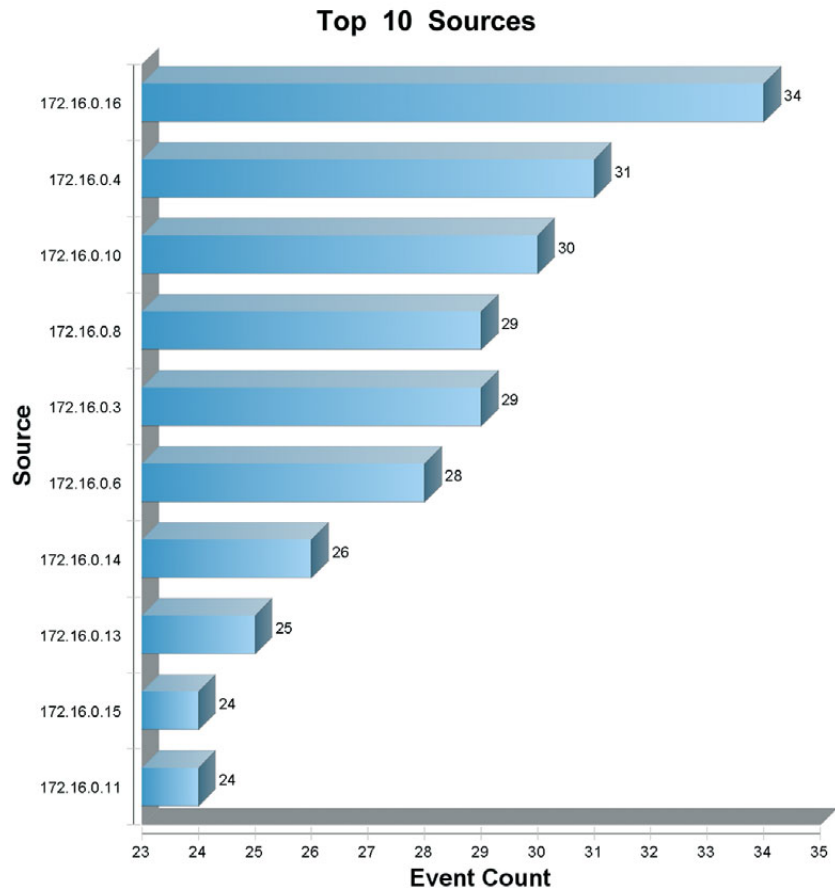


Figure 3. Graph from a detailed report that leverages business intelligence



Why IBM

Unlike other vendors, IBM offers a broad array of security products, an established track record of protection that is backed by the IBM ISS X-Force® research and development team and the ability to expand security coverage with virtually no increase in operational cost.

For more information

To learn more about the IBM Proventia Management SiteProtector system, please contact your IBM marketing representative or IBM Business Partner, or visit:

ibm.com/services/security

© Copyright IBM Corporation 2009

IBM Global Services
Route 100
Somers, NY 10589 U.S.A.

Produced in the United States of America
August 2009
All Rights Reserved

IBM, the IBM logo, ibm.com, Internet Security Systems, Proventia, SiteProtector and X-Force are trademarks or registered trademarks of International Business Machines Corporation in the United States, other countries, or both. If these and other IBM trademarked terms are marked on their first occurrence in this information with a trademark symbol (® or ™), these symbols indicate U.S. registered or common law trademarks owned by IBM at the time this information was published. Such trademarks may also be registered or common law trademarks in other countries. A current list of IBM trademarks is available on the Web at "Copyright and trademark information" at ibm.com/legal/copytrade.shtml

Other company, product or service names may be trademarks or service marks of others.

References in this publication to IBM products or services do not imply that IBM intends to make them available in all countries in which IBM operates.

Disclaimer: The customer is responsible for ensuring compliance with legal requirements. It is the customer's sole responsibility to obtain advice of competent legal counsel as to the identification and interpretation of any relevant laws and regulatory requirements that may affect the customer's business and any actions the reader may have to take to comply with such laws. IBM does not provide legal advice or represent or warrant that its services or products will ensure that the customer is in compliance with any law or regulation.

IBM reserves the right to change specifications or other product information without prior notice. This publication could include technical inaccuracies or typographical errors. IBM PROVIDES THIS PUBLICATION "AS IS" WITHOUT WARRANTY OR CONDITION OF ANY KIND, EITHER EXPRESS OR IMPLIED, INCLUDING THE IMPLIED WARRANTIES OR CONDITIONS OF MERCHANTABILITY OR FITNESS FOR A PARTICULAR PURPOSE. Some jurisdictions do not allow disclaimer of express or implied warranties in certain transactions; therefore this statement may not apply to you. Use of the information herein is at the recipient's own risk. Information here may be changed or updated without notice. IBM may also make improvements and/or changes in the products and/or the programs described herein at any time without notice.

Any material included in this document with regard to third parties is based on information obtained from such parties. No effort has been made to independently verify the accuracy of the information. This document does not constitute an expressed or implied recommendation or endorsement by IBM of any third-party product or service.



Recyclable, please recycle

SES03003-USEN-01