



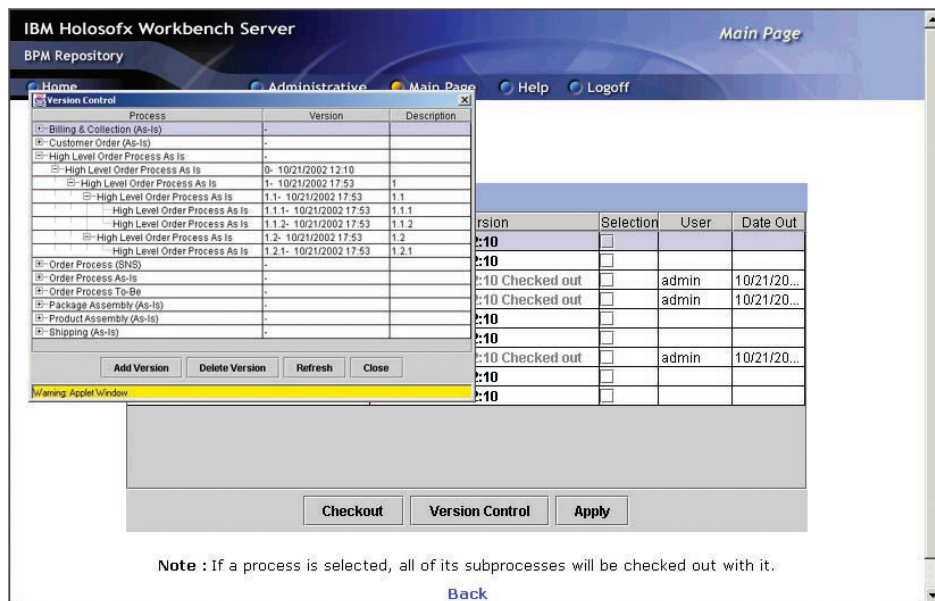
WebSphere® software

IBM Holosofx Workbench Server, Version 4.2.2

Highlights

- **Creates a collaborative team environment for designing and managing business processes**
- **Safeguards vital information through version control and modification tracking**
- **Publishes the latest processes and related data to a central data warehouse**
- **Provides multiple users with access to IBM Holosofx Workbench, an easy-to-use business process modeling tool**
- **Enables Internet or intranet access to the latest business process, definitions, policies, procedures and business rules**

Organize and share process data
 Creating business processes is rarely a one-person assignment. Each process requires input from multiple team members—who are often on different schedules and in different locations—to model, analyze, validate and modify the processes. To enhance and encourage collaboration, IBM Holosofx Workbench Server provides the tools necessary to capture, organize and share business process data across your enterprise. After creating business process models using IBM Holosofx Workbench, team members can use Holosofx Workbench Server to collaborate on changes, maintain version control and keep everyone informed. And IBM offers inclusive licensing of Holosofx Workbench Server and Holosofx Workbench to combine the products' modeling and deployment capabilities.¹



The check-in and check-out feature of IBM Holosofx Workbench Server allows administrators to maintain version control for critical business process management data.

IBM Holosofx Workbench Server consists of two components: a repository and a Web publisher. The repository provides the content-management features that help you organize and consolidate all business processes in a centralized storage system. The repository also maintains version control with a check-in and check-out feature that provides only the latest approved version to authorized team members. And to avoid multiple copies with varying changes, once a user checks out a document, other users have read-only privileges. When a user makes a change, the repository tracks each modification, allowing administrators to view a history for process flows in the database.

The Web publisher component of the server is an Internet- or intranet-based delivery application that enables authorized personnel to view and use enterprise process data including:

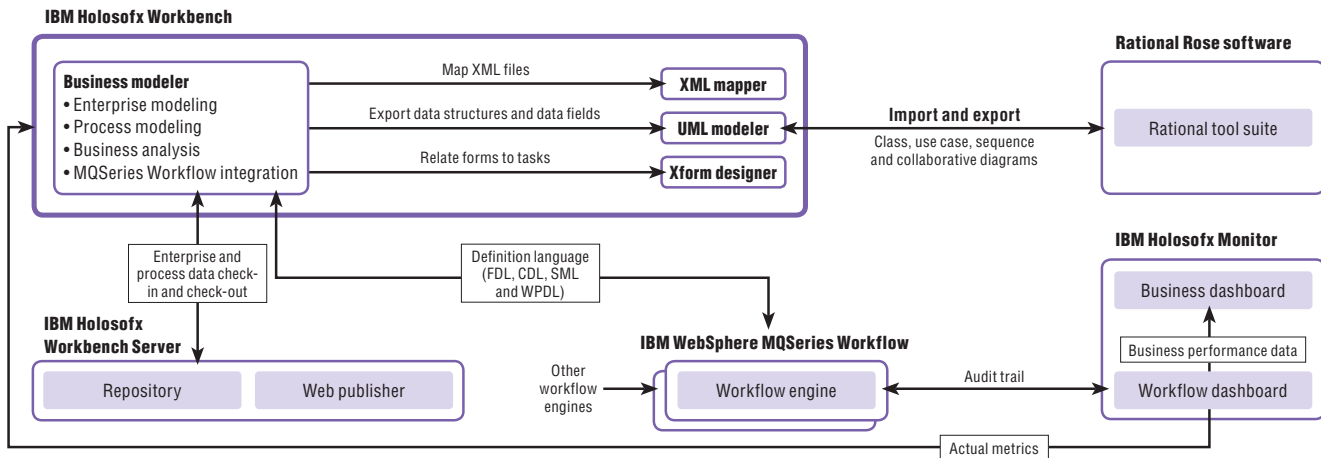
- *Business process models*
- *Policies, procedures and business rules*
- *Goals and performance measures*
- *Organizational charts and employee directories*
- *Process operations*

An easy-to-use interface allows you to resize windows and customize views. Based on an individual's access level, the interface lets authorized users log in and access published materials in the repository through the Web, and receive automatic e-mail notification

when content changes. By distributing this data, the Web publisher can help inform, educate and train personnel throughout the enterprise.

Succeed with a comprehensive solution

With IBM Holosofx Workbench Server, you can customize your business process design for a limited group of users or a widespread, collaborative team. To get your business processes running at a world-class level, combine the Holosofx Workbench Server with Holosofx Workbench to create a comprehensive business process-modeling environment for your enterprise. Use IBM WebSphere® Business Integration with IBM



IBM Holosofx tools integrate tightly with WebSphere Business Integration software to facilitate effective business process management and monitoring for greater control and informed decision making.

WebSphere MQSeries® Workflow to implement the process models, and add IBM Holosofx Monitor to provide realtime process data.

Build a better view of your business

As the speed of business increases, so do the challenges your enterprise will address. Managing disparate internal systems. Utilizing your workforce most effectively. Improving operational efficiency.

WebSphere Business Integration products give you the high performance, reliability and scalability necessary to connect applications that share and leverage information. Combining process integration and connectivity into a single offering, these products allow you to decide which software is the best solution for your particular business need.

WebSphere Business Integration products enable you to change how your business operates through modeling, automating and monitoring business processes—across people and systems, inside and outside of your enterprise. As a result, you can unify information and streamline business processes to eliminate operational inefficiencies while solidifying the relationships they support.

IBM Holosofx products are part of the WebSphere Business Integration line of products, providing the modeling and monitoring capabilities needed to help drive your e-business success. As business requirements change, you can quickly assess and implement process changes to help optimize your e-business performance—and deliver more value from existing systems.

For more information

To learn more about IBM Holosofx Workbench Server, contact your IBM marketing representative or visit:

ibm.com/websphere/integration/holosofx

IBM Holosofx Workbench Server, Version 4.2.2 at a glance

Hardware requirements

For Microsoft® Windows®

- Intel® Pentium® III, 650MHz or higher
 - 256MB RAM (512MB recommended)
 - 50MB disk space, plus sufficient space to store published organization files (100MB recommended)
-

For IBM AIX®

- IBM RS/6000®
 - 512MB RAM or higher
 - 100MB disk space or higher
-

For Sun Solaris

- Sun Server
 - 512MB RAM or higher
 - 100MB disk space or higher
-

For Web browser client

- Intel Pentium III, 650MHz or higher
 - 128MB RAM (256MB recommended)
-

Software requirements

For Microsoft Windows

- Windows NT® or Windows 2000
 - IBM WebSphere Application Server Advanced Edition, Version 4.0.2
 - IBM DB2® Universal Database™, Version 7.2 or higher with FixPack 5 or higher, or Microsoft SQL Server 2000, or Oracle, Version 8.1.7.1
-

For IBM AIX

- AIX, Version 4.3 or higher or AIX, Version 5L
 - IBM WebSphere Application Server Advanced Edition, Version 4.0.2
IBM DB2 Universal Database, Version 7.2 or higher with FixPack 5 or higher, or Oracle, Version 8.1.7.1
-

For Sun Solaris

- Solaris, Version 7, maintenance level August 2001 or later, or Solaris, Version 8, maintenance level August 2001 or later
 - IBM WebSphere Application Server Advanced Edition, Version 4.0.2
 - IBM DB2 Universal Database, Version 7.2 or higher with FixPack 5 or higher, or Oracle, Version 8.1.7.1
-

For Web browser client

- Microsoft Windows 98, Windows NT or Windows 2000
 - Java™ technology-enabled browser
 - Microsoft Internet Explorer, Version 5.0 or higher
 - Netscape Communicator, Version 4.7 or higher
 - Java Plug-in, Version 1.4.0 or higher
-



© Copyright IBM Corporation 2002

IBM Corporation
Software Group
Route 100
Somers, NY 10589
U.S.A.

Produced in the United States of America
11-02
All Rights Reserved

AIX, DB2, DB2 Universal Database, the e-business logo, IBM, the IBM logo, MQSeries, RS/6000 and WebSphere are trademarks or registered trademarks of International Business Machines Corporation in the United States, other countries or both.

Intel and Pentium are trademarks of Intel Corporation in the United States, other countries or both.

Microsoft, Windows, Windows NT and the Windows logo are trademarks of Microsoft Corporation in the United States, other countries or both.

Java and all Java-based trademarks and logos are trademarks of Sun Microsystems, Inc. in the United States, other countries or both.

¹ Passport Advantage required.

Other company, product and service names may be trademarks or service marks of others.