

# IBM WebSphere Business Integration Modeler, Version 4.2.4

## Highlights

- **Captures important business processes and guidelines in one place for easy reference and company-wide consistency**
- **Helps model diagrams of current and new business processes with drag-and-drop capabilities and a simplified graphical interface**
- **Optimizes business outcomes by running scenarios to simulate processes before implementation**
- **Generates process performance metrics in more than 50 report styles or exports data to other software for customized reporting**
- **Delivers facets and functions of business-process analysis and business-process engineering in a complete, business-process management solution**
- **Exports business-process definitions to be automated with IBM WebSphere MQ Workflow**

Mapping your enterprise's business processes can be a daunting task. Communicating to others about these processes and all they involve can be even more challenging. And when you're ready to streamline your business processes through automation or other initiatives, the inability to communicate your IT requirements can derail the project up front. As an important step toward e-business on demand™, the ability to effectively optimize business processes can help you see and manage your company as an integrated whole. Become more flexible and responsive to changing business conditions and gain competitive advantage — while reducing total cost of ownership.

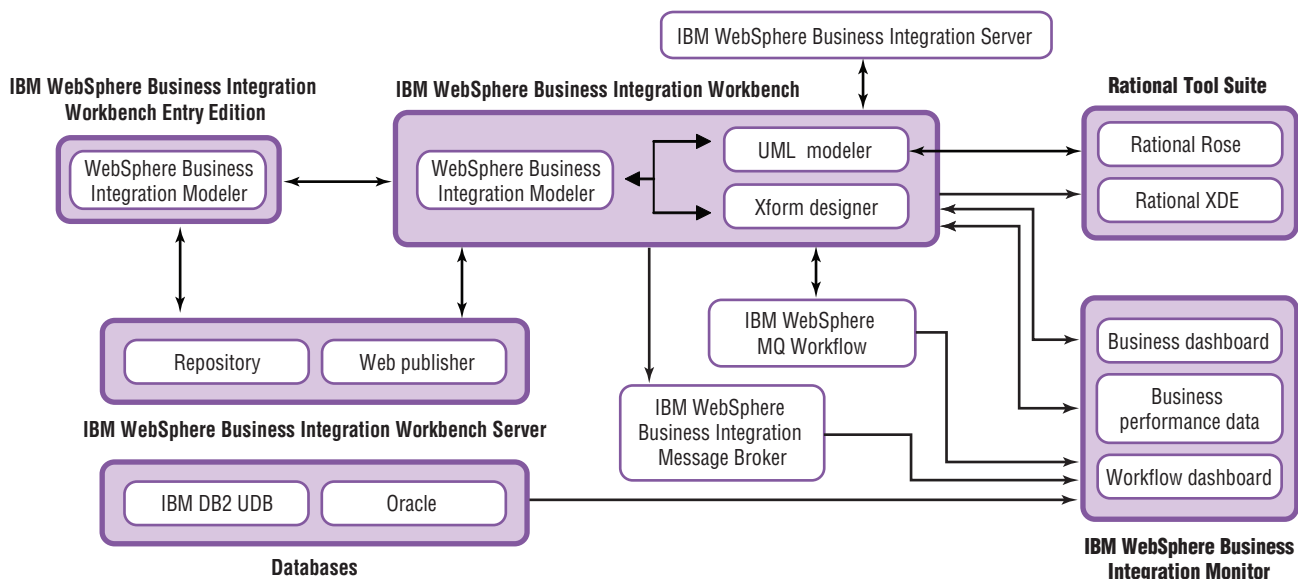


Figure 1. IBM WebSphere Business Integration tools facilitate effective business-process management, enabling you to design, implement and monitor key process workflows.

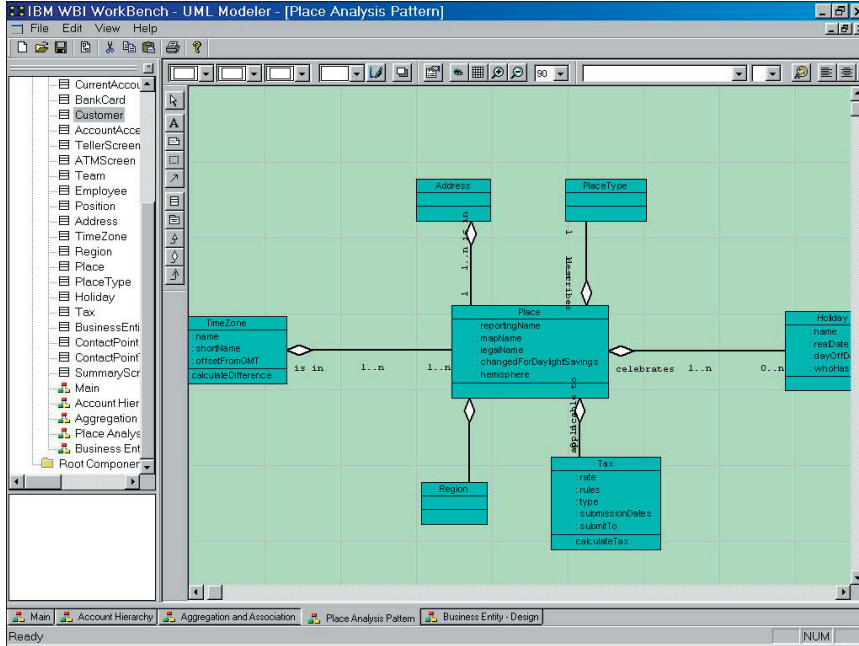


Figure 2. Export process models as UML to Rational Rose and XDE.

IBM WebSphere® Business Integration Modeler provides business professionals with easy-to-use tools to design, test and communicate about complex business processes. Simulate the operational efficiency of business processes and analyze potential business results—all before committing resources to development and deployment. With WebSphere Business Integration Modeler, you can model the processes that can help you reap the full benefits of e-business on demand—and the flexibility you need to support and enable the world of integrated business processes.

### Redesign and simulate your processes and outcomes

WebSphere Business Integration Modeler lets you visualize your business processes and validate them before you automate. Capture, analyze and redesign your company's business processes in activity-decision flow diagrams that you can easily manage with a graphical user interface (GUI). View how processes will actually perform by simulating different business scenarios to test the range of possible outcomes before implementation. And document your process models with more than 50 included report styles to fully illustrate process potential.

WebSphere Business Integration Modeler comprises two components. To help you design and implement complex process workflows, 10 licences of WebSphere Business Integration Workbench provide advanced analysis, reporting, integration and deployment capabilities. WebSphere Business Integration Workbench Server provides repository management capabilities to help you manage different versions of your models and selectively share them among users. It also allows you to publish models, policies, procedures and business rules online.

### Create and validate with full, business-process modeling capabilities

WebSphere Business Integration Workbench offers a full range of business-process modeling capabilities, from creation of process flow diagrams to validation of process outcomes. You can also export business process definitions to IBM WebSphere MQ Workflow (formerly MQSeries® Workflow) or IBM WebSphere Business Integration Server for implementation or to Rational Rose® or Rational® XDE for IT architects and developers to refine. For users that do not have an immediate need for the full capabilities of IBM WebSphere Business Integration Workbench, IBM

WebSphere Business Integration Workbench Entry Edition provides simplified business-process modeling, validation and simulation, while maintaining compatibility with the WebSphere business integration portfolio. As your needs evolve, you can seamlessly transfer your organizational models, policies and procedures to WebSphere Business Integration Workbench.

By linking WebSphere Business Integration Workbench and WebSphere Business Integration Server, you can create a single repository for all business process models, business objects, collaborations and maps within your enterprise. In addition, WebSphere Business Integration Workbench allows you to launch the IBM WebSphere Business Integration Toolset Process Designer and use it to edit each collaboration. WebSphere Business Integration Workbench is built on three components: business modeler, Unified Modeling Language (UML) modeler and Xform designer.

### Business modeler

The business modeler allows users to design business-process models using intuitive drag-and-drop technology. Faster and more flexible than drawing, WebSphere Business Integration Workbench contains process modeling functions that translate complex business processes into logical and easy-to-follow flow diagrams. It can help you model IBM WebSphere MQ Integrator Broker and IBM WebSphere Business Integration Message Broker flow activities.

WebSphere Business Integration Workbench supports cascading detail levels within business processes—from high-level summaries to specific tasks, roles and dependencies. Additional enterprise modeling capabilities provide a repository for company policies, procedures, business rules and other important

enterprise information—in one place—for easy accessibility and enterprise-wide consistency. Linking this information to your business processes is vital to creating an accurate representation of all the factors that shape each process outcome. You can identify the important rules and other guidelines—such as policies, business goals and legal considerations—that affect your process performance to help gauge your company's readiness for process automation.

The business modeler component also provides dynamic analytical tools to optimize business process modeling. After processes are captured within WebSphere Business Integration Workbench, you can simulate process performance under varying environmental factors, such as time and cost.

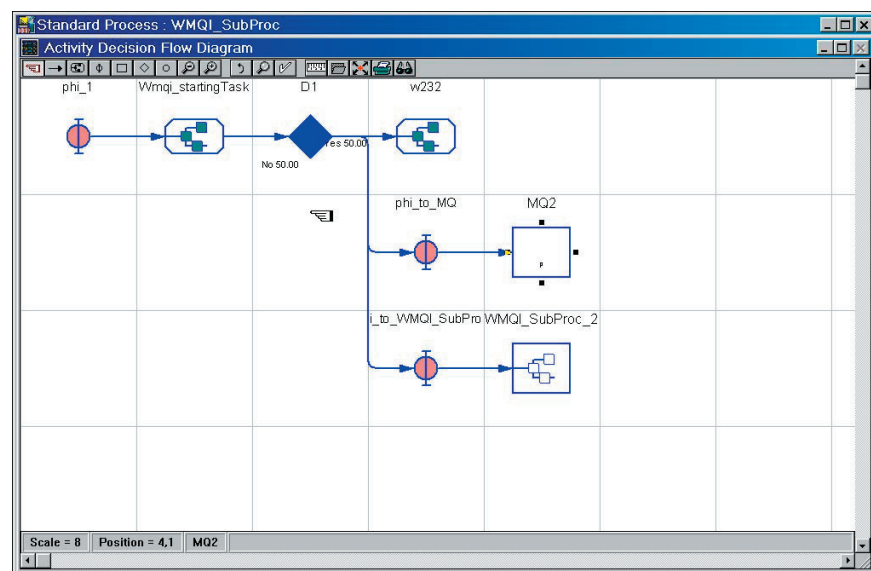


Figure 3. Capture and review details for each step with your outlined business processes.

You can identify the right solution for your current business environment by projecting outcomes before implementation. And you can quickly adjust processes when business factors change in the future. WebSphere Business Integration Workbench produces process metrics for analysis in multiple chart types, with export capabilities to spreadsheet applications for additional data management options.

#### *UML modeler*

The UML modeler component bridges the gap between business users and IT professionals. The UML modeler conveniently exports UML output to rapid-development tools, such as Rational Rose or Rational XDE software, allowing extended data use and flexibility. You can also use object models generated by the Rational Rose visual modeling tool with the UML modeler.

#### *Xform designer*

The Xform designer component places the capacity of customized workplace design in the hands of the everyday business user. WebSphere Business Integration Workbench users can quickly design GUIs to meet specific enterprise needs, and then provide screen mock-ups of new interfaces and

forms to illustrate IT requirements. Interface design mock-ups can also be converted to XML for use in other software development applications.

#### **Organize and share process data**

To enhance and encourage collaboration, WebSphere Business Integration Workbench Server provides the tools necessary to capture, organize and share business process data throughout your enterprise. After creating business process models through WebSphere Business Integration Workbench or WebSphere Business Integration Workbench Entry Edition, team members can use WebSphere Business Integration Workbench Server to help monitor changes and maintain version control.

WebSphere Business Integration Workbench Server consists of a repository, a Web publisher and security features. The repository provides the content management features that can help you organize and consolidate all business processes in a centralized storage system. The repository also enables version control with a check-in and check-out feature that provides the latest version to authorized team members. To avoid multiple copies with varying changes, once a user checks out a file, other users have read-only privileges.

The Web publisher component of the server is an Internet- or intranet-based delivery application that enables authorized personnel to view enterprise process data.

- *Business process models*
- *Policies, procedures and business rules*
- *Goals and performance measures*
- *Organizational trees and employee directories*
- *Process operations*

An easy-to-use interface allows you to resize windows and customize views. Based on an individual's access level, the interface lets authorized users log in and access published materials in the repository through the Web. By distributing this data, the Web publisher can help you inform, educate and train personnel throughout the enterprise.

The security components in WebSphere Business Integration Workbench Server allow you to manage user access to information throughout the system. With these security features, you can authenticate users and determine the functions that they can access in the repository and Web publisher.

## WebSphere business integration portfolio

IBM offers a wide range of middleware and operating systems for virtually every computing platform to give you the right tools to become an e-business on demand. The IBM WebSphere business integration portfolio delivers market-leading middleware that allows you to unite applications, people and business processes so they can work as one. Built on open standards, like Java 2 Platform, Enterprise Edition (J2EE), XML and new Web services standards, this robust portfolio is endowed with reliability, scalability and security-rich features—the core strengths you've come to expect from IBM.

With a WebSphere business integration solution, your business managers can effectively model and simulate business processes—then refine these processes to increase efficiencies as needs arise. Your IT staff can quickly and easily integrate previously disparate systems within your existing infrastructure, new applications and systems. Your systems can connect seamlessly with your customers' and trading partners' systems to deliver immediate, dynamic—and personalized—information. You'll be able to monitor your processes from end to end to show an up-to-the-minute view of your enterprise performance.

---

### IBM WebSphere Business Integration Workbench, Version 4.2.4 at a glance

---

#### Hardware requirements

##### *For Microsoft Windows*

- Intel® Pentium® III, 650MHz or higher
- 128MB RAM or higher
- 200MB available hard disk drive space (100MB for installation; 100MB for operation)

#### Software requirements

- Microsoft® Windows® 98, Windows NT®, Windows 2000 or Windows XP
    - Exporting to IBM WebSphere Business Integration Monitor requires Java 1.3.1, or higher. Note: For non-English locales, Java Developer Kit (JDK) 1.4
    - Exporting to Rational XDE requires installation of XDE 2003.
    - Importing and exporting XML and UML functionalities requires Microsoft XML parser 3 or 4.
    - Use of IBM WebSphere Business Integration Toolset Designer, Version 4.2.0 functionality requires Microsoft XML parser and IBM WebSphere Business Integration Toolset.
- 

---

### IBM WebSphere Business Integration Workbench Entry Edition at a glance

---

#### Hardware requirements

##### *For Microsoft Windows*

- Intel® Pentium® III, 650MHz or higher
- 128MB RAM or higher
- 200MB available hard disk drive space (100MB for installation; 100MB for operation)

#### Software requirements

- Microsoft® Windows® 98, Windows NT®, Windows 2000 or Windows XP
    - Importing and exporting XML and UML functionalities requires Microsoft XML parser 3 or 4.
- 

Better manage business effectiveness, and readily make improvements to help you gain quicker return on investment (ROI).

To learn more about WebSphere Business Integration Modeler, visit: [ibm.com/websphere/integration/wbimodeler/](http://ibm.com/websphere/integration/wbimodeler/)

#### For more information

IBM WebSphere Business Integration Modeler is a component of the WebSphere portfolio of business integration infrastructure software.

---

## IBM WebSphere Business Integration Workbench Server, Version 4.2.4 at a glance

---

### Hardware requirements

---

#### *For Microsoft Windows*

- Intel Pentium III, 650MHz or higher (recommended)
  - 256MB RAM (512MB recommended)
  - 100MB disk space, plus sufficient space for the database
- 

#### *For IBM AIX®*

- IBM RS/6000®
  - 512MB RAM or higher
  - 100MB disk space, plus sufficient space for the database
- 

#### *For Sun Solaris operating environment*

- Sun Server
  - 512MB RAM or higher
  - 100MB disk space, plus sufficient space for the database
- 

#### *For Web browser client*

- Intel Pentium III, 650MHz or higher
  - 128MB RAM (256MB recommended)
- 

### Software requirements

---

#### *For Windows*

- Windows NT 4.0 Server or Windows 2000 Server
  - IBM WebSphere Application Server, Version 4.0.2 Advanced Edition; IBM WebSphere Application Server, Version 5.0 with Fix Pack 1; or IBM WebSphere Application Server Network Deployment, Version 5.0 with Fix Pack 1
  - IBM DB2 Universal Database (IBM DB2 UDB), Version 7.2 with Fix Pack 5; IBM DB2 UDB, Version 8.1; Microsoft SQL Server 2000; Oracle 8.1.7.1; or Oracle 9i
- 

#### *For IBM AIX*

- AIX, Version 4.3 or higher or AIX, Version 5.1 or higher
  - WebSphere Application Server, Version 4.0.2 Advanced Edition; WebSphere Application Server, Version 5.0 with Fix Pack 1; or WebSphere Application Server Network Deployment, Version 5.0 with Fix Pack 1
  - IBM DB2 UDB, Version 7.2 with Fix Pack 5; IBM DB2 UDB, Version 8.1; Oracle 8.1.7.1; or Oracle 9i
- 

#### *For Sun Solaris operating environment*

- Solaris 8 operating environment, maintenance level August 2001 or higher; or Solaris 9 operating environment
  - WebSphere Application Server, Version 4.0.2 Advanced Edition; WebSphere Application Server, Version 5.0 with Fix Pack 1; or WebSphere Application Server Network Deployment, Version 5.0 with Fix Pack 1
  - IBM DB2 UDB, Version 7.2 with Fix Pack 5; IBM DB2 UDB, Version 8.1; Oracle 8.1.7.1; or Oracle 9i
- 

#### *For Web browser client:*

- Windows 98, Windows NT 4.0 with Service Pack 3 or higher; Windows 2000; or Windows XP
  - Java technology-enabled browser (Microsoft Internet Explorer [IE] 5.0 or higher recommended)
  - Java plug-in Java Run Environment 1.4.0 or higher
- 



© Copyright IBM Corporation 2003

IBM Corporation  
Software Group  
Route 100  
Somers, NY 10589  
U.S.A.

Produced in the United States of America  
09-03  
All Rights Reserved

AIX, DB2, DB2 Universal Database, the e-business logo, e-business on demand, IBM, the IBM logo, MQSeries, RS/6000 and WebSphere are trademarks of International Business Machines Corporation in the United States, other countries or both.

Rational and Rational Rose are trademarks of International Business Machines Corporation and Rational Software Corporation in the United States, other countries or both.

Intel and Pentium are trademarks of Intel Corporation in the United States, other countries or both.

Microsoft, Windows and Windows NT are trademarks of Microsoft Corporation in the United States, other countries or both.

Java and all Java-based trademarks are trademarks of Sun Microsystems, Inc. in the United States, other countries or both.

Other company, product and service names may be trademarks or service marks of others.