

**WebSphere.** Lombardi Edition Version 7.1

*Authoring Environment Installation and  
Configuration Guide*



# Table of Contents

Introduction .....	1
Lombardi product components .....	1
Lombardi architecture .....	1
Lombardi installation options .....	4
Installing Lombardi Authoring Environment .....	5
Steps for installing Lombardi Authoring Environment .....	5
Pre-installation setup .....	5
Hardware requirements for installing Lombardi Authoring Environment .....	6
Software requirements for installing Lombardi Authoring Environment .....	6
Authoring Environment Install .....	6
Installing Lombardi Authoring Environment .....	6
Post-installation tasks .....	7
Creating a shortcut to Lombardi Authoring Environment .....	8
Starting Lombardi Authoring Environment .....	8
Removing Lombardi Authoring Environment .....	12
Notices and Trademarks .....	13
Notices .....	13
Trademarks and service marks .....	15

# Introduction

IBM® WebSphere® Lombardi Edition includes several components, as described in the following sections. The components that you install depend upon your requirements. For example, if you want to build processes and share items with other users, you should install Lombardi Authoring Environment and connect to Lombardi Process Center. See [Lombardi installation options](#) for more information.

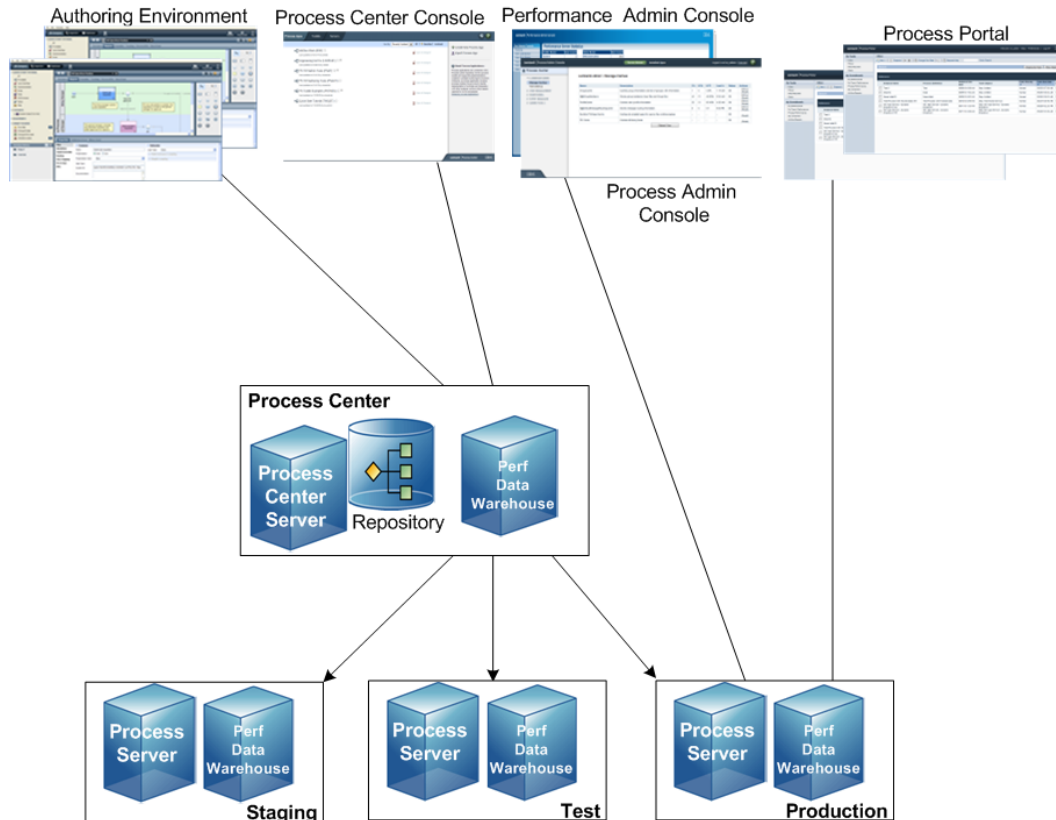
## Lombardi product components

IBM WebSphere Lombardi Edition includes the following components. The following diagram illustrates how these components are commonly configured.

Component	Function
Process Center	Provides a central development environment and repository for multiple process authors working in the Process Center Console and other interfaces in Lombardi Authoring Environment. The Process Center includes a Process Center Server and a Performance Data Warehouse, allowing you to build and run process applications and also store performance data for testing and playback purposes during development efforts.
Process Server	Executes the processes and services built in Lombardi Authoring Environment, stored in the Process Center repository, and then installed in a runtime environment.
Performance Data Warehouse	Collects and aggregates process data according to tracking requirements established in Lombardi Authoring Environment.
Process Center Console	Enables you to manage and maintain the Lombardi repository, including management of process applications, workspaces, and snapshots. Also enables installation of process applications on Process Servers in runtime environments.
Authoring Environment	Lombardi Authoring Environment consists of several interfaces to enable process authors to model, implement, simulate, and inspect business processes.
Process Portal	Provides an interface that enables process participants to perform assigned tasks, view the history of tasks, and view the performance of their processes and teams. Using Process Portal, process participants can connect to the Process Center Server or a Process Server in any configured runtime environment, such as test or production environments.
Process Admin Console	Provides an interface that enables administrators to configure and maintain Lombardi Process Servers in any configured runtime environment, such as test or production environments. Also enables administrators to configure and maintain the Process Center Server.
Performance Admin Console	Provides an interface that enables administrators to configure and maintain Lombardi Performance Data Warehouses in any configured runtime environment, such as test or production environments. Also enables administrators to configure and maintain the Performance Data Warehouse included in the Process Center.

## Lombardi architecture


The following diagram illustrates a typical IBM® WebSphere® Lombardi Edition configuration:



- From Lombardi Authoring Environment, multiple users connect to the Process Center.
- In Lombardi Authoring Environment, users create process models and supporting implementations (process applications) and store those applications and associated items in the Process Center repository. Authoring Environment users connected to the Process Center can share items.
- The Process Center includes a Process Center Server and Performance Data Warehouse, allowing users working in Lombardi Authoring Environment to run their process applications and store performance data for testing and playback purposes during development efforts.
- From the Process Center Console, administrators install process applications that are ready for staging, testing, or production on the Process Servers in those environments.
- From the Process Center Console, administrators manage running instances of process applications in all configured environments.
- From the Process Portal, end users perform assigned tasks. The Process Center Server and Process Servers in configured runtime environments can run the process applications that create the assigned tasks.
- Using the Process Portal, process participants can connect to the Process Center Server or a Process Server in any configured runtime environment, depending on whether a process is being developed, tested, or has been released to a production environment.
- Lombardi Performance Data Warehouse retrieves tracked data from the Process Server or Process Center Server at regular intervals. Users can create and view reports that leverage this data in Lombardi Authoring Environment and Process Portal.

- From the Process Admin Console and Performance Admin Console, administrators can manage and maintain all Lombardi servers.

# Lombardi installation options

If you want to...	You should install...	For instructions, see...
Create process models, implement the process steps, and share your work by connecting to a central repository.	Lombardi Authoring Environment (Windows® only)	<a href="#">Installing Lombardi Authoring Environment</a>
Provide a central repository and shared development environment for process authors.	Lombardi Process Center (includes Process Center Server, Performance Data Warehouse, and Authoring Environment)	<i>Lombardi Process Center Installation and Configuration Guide</i>
Install Lombardi servers in a runtime environment such as staging, test, or production.	Lombardi runtime environment (includes Process Server and Performance Data Warehouse)	<i>Lombardi Runtime Environment Installation and Configuration Guide</i>
Install an isolated Process Center for a single local user for demonstration purposes only.	Lombardi Process Center using Lombardi Installer's Simple option (Windows only)   Do not use the Simple option to install a shared Process Center. For a shared installation, follow the instructions in <i>Lombardi Process Center Installation and Configuration Guide</i> .	<i>Lombardi Express Installation and Configuration Guide</i>
Automate installation of Lombardi Process Center.	Lombardi Process Center using the Automated Installer	<i>Lombardi Automated Process Center Installation and Configuration Guide</i>
Automate installation of Lombardi servers in a runtime environment such as staging, test, or production.	Lombardi runtime environment using the Automated Installer	<i>Lombardi Automated Runtime Environment Installation and Configuration Guide</i>

# Installing Lombardi Authoring Environment

Users of Lombardi Authoring Environment connect to a Process Center repository so that they can share library items across projects. If you want to build processes and share items with other users, you should install Lombardi Authoring Environment.

Lombardi Authoring Environment installation includes the following components:

- Process Center Console
- Designer
- Inspector
- Optimizer

For information about accessing and using Lombardi Authoring Environment interfaces, see [Starting Lombardi Authoring Environment](#).

## Steps for installing Lombardi Authoring Environment

The following tables list the tasks required to install Lombardi Authoring Environment on your system.

### Pre-installation setup

Task	See...
1. Meet the hardware requirements.	<a href="#">Hardware requirements for installing Lombardi Authoring Environment</a>
2. Meet the software requirements.	<a href="#">Software requirements for installing Lombardi Authoring Environment</a>

### Installation

Task	See...
1. Connect to a Lombardi Process Center.	<a href="#">Installing Lombardi Authoring Environment</a>
2. Download the Authoring Environment package from the Process Center Console and extract the contents of the package to your file system.	<a href="#">Installing Lombardi Authoring Environment</a>

### Post-installation tasks

Task	See...
1. Start Lombardi Authoring Environment.	<a href="#">Starting Lombardi Authoring Environment</a>

## Pre-installation setup

Before installing Lombardi Authoring Environment, you must meet the system requirements as described in the following sections.

## Hardware requirements for installing Lombardi Authoring Environment

The following table describes the hardware requirements for installing Lombardi Authoring Environment:

Lombardi installation	Minimum hardware required
Authoring Environment	1.2 GHz processor or equivalent 512 MB available RAM (1 GB is recommended) 400 MB free disk space Screen resolution of 1280 x 1024 pixels

## Software requirements for installing Lombardi Authoring Environment

The following table lists the supported operating systems for installing Lombardi Authoring Environment:

Operating system	Versions
Microsoft® Windows	Microsoft Windows Server 2008 (64-bit) Microsoft Windows Server 2008 (32-bit) Microsoft Windows Vista(64-bit) Microsoft Windows Vista (32-bit) Microsoft Windows Server 2003 R2 (64-bit) Microsoft Windows Server 2003 R2 (32-bit) Microsoft Windows XP Service Pack 3 (SP3) Microsoft Windows 7

## Authoring Environment Install

After you have met all the requirements for installation, you are ready install Lombardi Authoring Environment. No installer program is required to install Lombardi Authoring Environment on your system. If you have access to a Lombardi Process Center repository, you can download the Authoring Environment package from the Process Center Console and extract the contents of the package to your file system, as described in the following section.

See *Managing access to the Process Center repository in Lombardi Authoring Environment User Guide* or online help for more information.



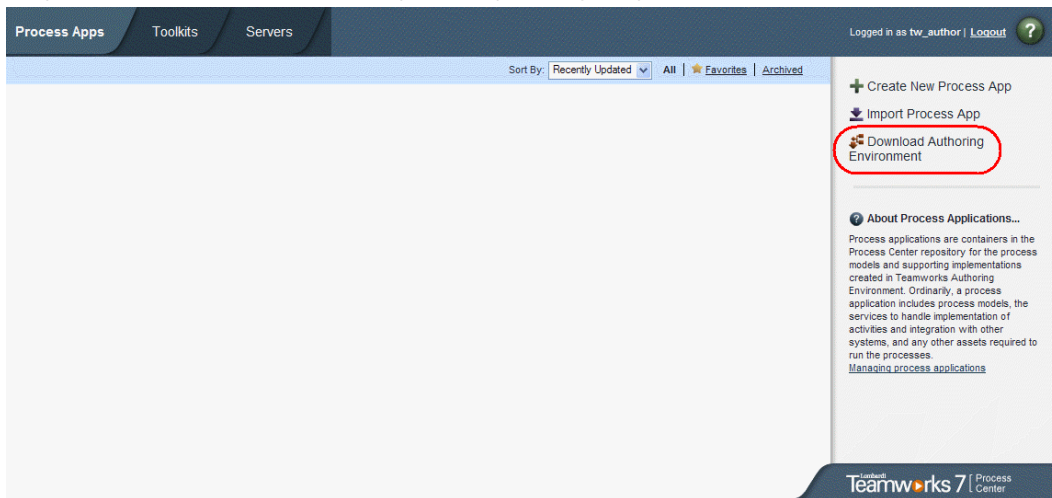
Lombardi Authoring Environment installation is separate from all other Lombardi server installations. Each instance of Lombardi Authoring Environment connects to one Process Center. If you work with multiple Process Centers, then you need to install an Authoring Environment instance for each Process Center that you use.

## Installing Lombardi Authoring Environment

To install Lombardi Authoring Environment on your system:



1. Access the Process Center Console by opening your Web browser to the following location: `http://[host_name]:[port]/ProcessCenter`, providing the name of the host on which the Process Center is installed and the port designated for the Process Center.
2. Log on using your Lombardi user name and password.
3. Click the **Download Authoring Environment** option, as shown in the following image. When prompted, save the `Lombardi Authoring Environment.zip` file to your file system. This file is a package that contains everything needed to install and run Lombardi Authoring Environment. The download may take several minutes to complete depending on your network connection.



4. Using an extraction tool such as WinZip, extract the contents of the `Lombardi Authoring Environment.zip` file to the directory on your file system where you want to install Lombardi Authoring Environment.
5. The contents are extracted to a folder named `Lombardi Authoring Environment` in the directory you specified. The Authoring Environment is already configured to connect to the Process Center from which you downloaded the Authoring Environment package, so no additional configuration is required before [Starting Lombardi Authoring Environment](#).



To create a shortcut to Lombardi Authoring Environment that you can access from the Windows Start menu, see [Creating a shortcut to Lombardi Authoring Environment](#).

## Post-installation tasks

After installing Lombardi Authoring Environment on your system, you are ready to start the Authoring Environment and begin modeling processes and sharing library items with other users, as described in the following sections.



The directory where you installed Lombardi product components is referred to as `[Lombardi_home]`.

## Creating a shortcut to Lombardi Authoring Environment

After downloading and extracting Lombardi Authoring Environment as described in [Installing Lombardi Authoring Environment](#), you can create a shortcut to the Authoring Environment that you can access from the Windows Start menu:

1. Go to the [Lombardi\_home] \Lombardi Authoring Environment directory.
2. Double-click the createShortcut.cmd file to create the shortcut.

You can access the shortcut from **Start > IBMWebSphere Lombardi Edition > Lombardi Authoring Environment**.

## Starting Lombardi Authoring Environment

All process development takes place in Lombardi Authoring Environment. The following topics provide more details about logging in, navigating the initial views, and accessing each available interface in Lombardi Authoring Environment.

After starting Lombardi Authoring Environment as outlined in the following sections, you can run a sample process by following the instructions in *Lombardi Quick Start Tutorial*. The tutorial provides everything you need to start using all Lombardi Authoring Environment features.

## Logging in

Start Lombardi Authoring Environment one of the following ways:

- Double-click the **Lombardi Authoring Environment** Windows® desktop shortcut
- Choose **Start > IBMWebSphere Lombardi Edition > Lombardi Authoring Environment** from the Windows desktop
- Go to [Lombardi\_home] \Lombardi Authoring Environment and run **eclipse.exe**

When the Log In dialog opens, provide the following information:



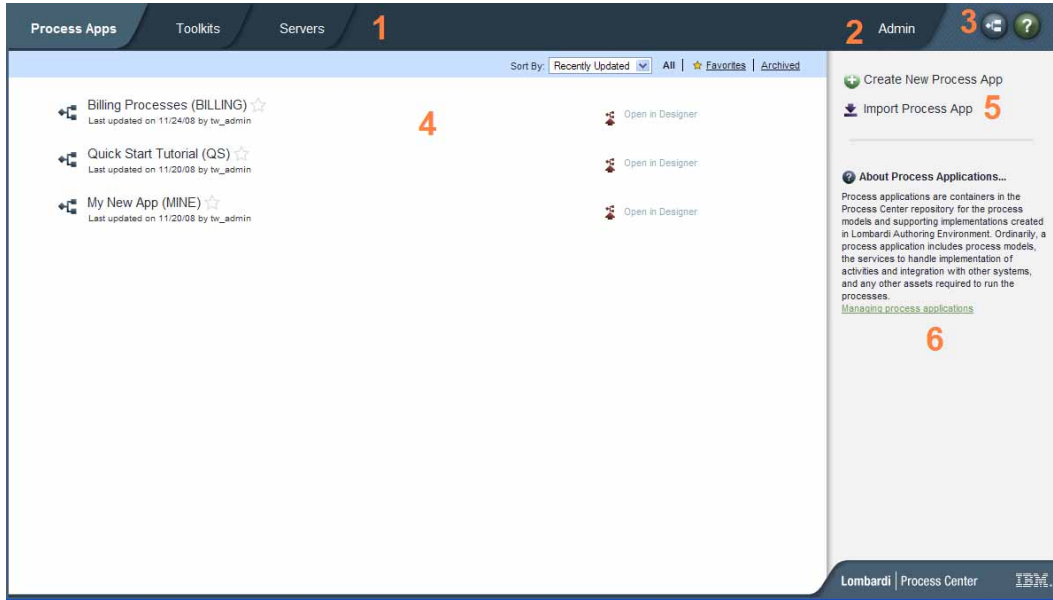
Contact your Lombardi administrator if you do not already have a user account.

User name	Your Lombardi user name.
Password	Your Lombardi password.

You are connected to the Process Center designated during installation of Lombardi Authoring Environment.

## Navigating initial views

The first time you start Lombardi Authoring Environment, it opens to the Process Center Console:



The Process Center Console enables you to create and manage process applications, install snapshots on test and production servers and perform other tasks. The following table describes each numbered area in the preceding image of the Process Center Console:

1	Click one of the available tabs to pick the items you want to create or manage. Clicking <b>Process Apps</b> takes you to the page shown in the preceding image where you can create and manage process applications. Clicking <b>Toolkits</b> takes you to a similar page for managing toolkits. Click <b>Servers</b> to manage the servers configured in your environment.
2	Click <b>Admin</b> to manage access to the Process Center repository.
3	Clicking the <b>Designer</b> button takes you directly to the Designer interface in Lombardi Authoring Environment. To learn more about the Designer and other interfaces in Lombardi Authoring Environment, see the following section. Clicking the Help button opens the online help for Lombardi Authoring Environment.
4	This is the main area of the Process Center Console where the items that you are currently managing, such as process applications, snapshots, or servers, are displayed. You can click the All, Favorites, or Archived options to filter the items displayed. Click an item to view and manage its settings. In the example, you can click one of the listed process applications to view and manage its snapshots, history, and general settings. To open a specific process application in the Designer, click the Open in Designer option for the process application that you want to access.
5	Use these options to either create a new process application or import one.
6	Informational dialogs such as this one are available throughout the Process Center Console. You can click the link shown to learn more about the subject, which in this case is process applications.

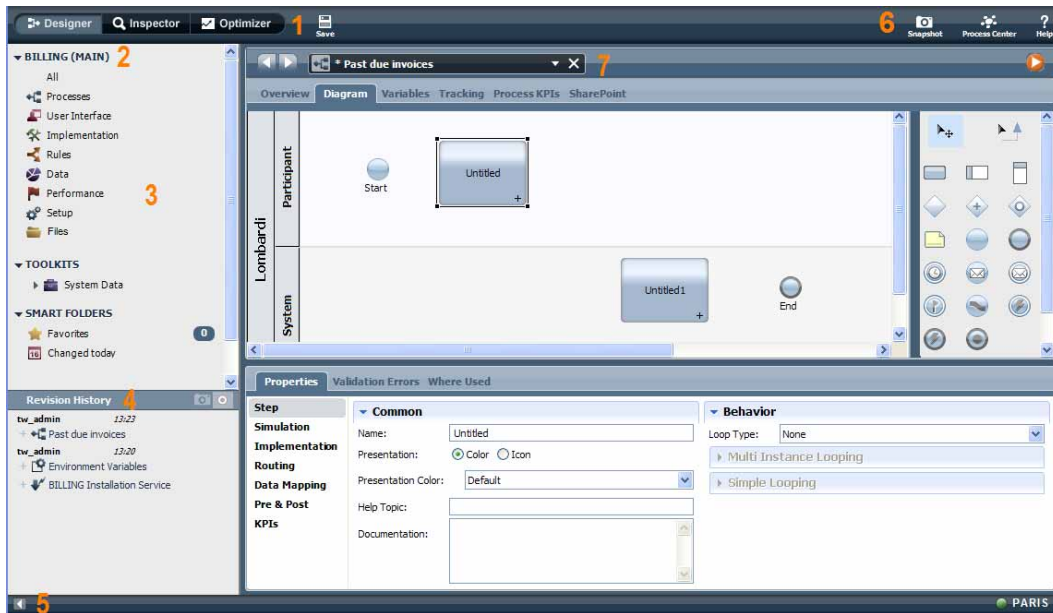
- To create a process application and get started developing processes in Lombardi, see "Creating your first Lombardi project" in the Authoring Environment User Guide or online help.
- To learn about all of the administrative tasks you can perform in the Process Center Console, see "Managing the Process Center repository" in the Authoring Environment User Guide or online help.



You can also access the Process Center Console by opening your Web browser to the following location: `http://[host_name]:[port]/ProcessCenter`. You can log in using your Lombardi user name and password. When accessing the Process Center Console from a browser, you cannot select library items such as process applications and immediately open them in the Designer view. To work interactively with the Designer and other available interfaces, you must start the Authoring Environment.

## Accessing and using Lombardi Authoring Environment interfaces

From the Process Center Console, you can click the **Designer** button or an **Open in Designer** option to begin developing processes in Lombardi Authoring Environment. The following image shows the Designer interface and each functional area:



You can use the Designer interface to develop process models and their underlying implementations, such as services. The following table describes each numbered area in the preceding image of the Designer interface in Lombardi Authoring Environment:

1	Click the appropriate button to open the interface that you want in Lombardi Authoring Environment, including the Optimizer and Inspector views.
2	Shows the process application currently open. In this sample, the Billing process application is open.
3	Shows the types of library items included in the currently open process application. Click a category, such as Processes, to see the processes that you can open and alter.
4	Shows the revision history for the currently open process application. In this sample, a user has recently added items to the open process.
5	Click this icon to hide the library and revision history. The icon enables you to toggle back and forth if you want to alternately hide and view the library and revision history. This toggle control is available in all Lombardi Authoring Environment interfaces: Designer, Optimizer, and Inspector.
6	Use the icons to create snapshots, access the Process Center Console, or access online assistance.

7	Shows the library item currently open for editing in the Designer. In this sample, the user has a process open and is working in the diagram, palette, and properties to create the steps of the process.
---	---

To learn more about the tasks that you can perform in each available interface in Lombardi Authoring Environment, including the Process Center Console, see "Lombardi tasks" in the Authoring Environment User Guide or online help.

# Removing Lombardi Authoring Environment

If you need to remove Lombardi Authoring Environment from your system, you should first back up any files that you want to preserve.

To remove Lombardi Authoring Environment, delete the `[Lombardi_home]\Lombardi Authoring Environment` directory from your file system.

# Notices and Trademarks

## Notices

This information was developed for products and services offered in the U.S.A. IBM may not offer the products, services, or features discussed in this document in other countries. Consult your local IBM representative for information on the products and services currently available in your area. Any reference to an IBM product, program, or service is not intended to state or imply that only that IBM product, program, or service may be used. Any functionally equivalent product, program, or service that does not infringe any IBM intellectual property right may be used instead. However, it is the user's responsibility to evaluate and verify the operation of any non-IBM product, program, or service.

IBM may have patents or pending patent applications covering subject matter described in this document. The furnishing of this documentation does not grant you any license to these patents. You can send license inquiries, in writing, to:

*IBM Director of Licensing  
IBM Corporation  
North Castle Drive  
Armonk, NY 10504-1785  
U.S.A.*

For license inquiries regarding double-byte character set (DBCS) information, contact the IBM Intellectual Property Department in your country or send inquiries, in writing, to:

*IBM World Trade Asia Corporation  
Licensing  
2-31 Roppongi 3-chome, Minato-ku  
Tokyo 106-0032, Japan*

The following paragraph does not apply to the United Kingdom or any other country where such provisions are inconsistent with local law:

INTERNATIONAL BUSINESS MACHINES CORPORATION PROVIDES THIS PUBLICATION "AS IS" WITHOUT WARRANTY OF ANY KIND, EITHER EXPRESS OR IMPLIED, INCLUDING, BUT NOT LIMITED TO, THE IMPLIED WARRANTIES OF NON-INFRINGEMENT, MERCHANTABILITY OR FITNESS FOR A PARTICULAR PURPOSE. Some states do not allow disclaimer of express or implied warranties in certain transactions, therefore, this statement may not apply to you.

This information could include technical inaccuracies or typographical errors. Changes are periodically made to the information herein; these changes will be incorporated in new editions of the publication. IBM may make improvements and/or changes in the product(s) and/or the program(s) described in this publication at any time without notice.

Any references in this information to non-IBM Web sites are provided for convenience only and do not in any manner serve as an endorsement of those Web sites. The materials at those Web sites are not part of the materials for this IBM product and use of those Web sites is at your own risk.

IBM may use or distribute any of the information you supply in any way it believes appropriate without incurring any obligation to you.

Licensees of this program who wish to have information about it for the purpose of enabling: (i) the exchange of information between independently created programs and other programs (including this one) and (ii) the mutual use of the information which has been exchanged, should contact:

*Intellectual Property Dept. for WebSphere Software  
IBM Corporation  
3600 Steeles Ave. East  
Markham, Ontario  
Canada L3R 9Z7*

Such information may be available, subject to appropriate terms and conditions, including in some cases, payment of a fee.

The licensed program described in this document and all licensed material available for it are provided by IBM under terms of the IBM Customer Agreement, IBM International Program License Agreement or any equivalent agreement between us.

Any performance data contained herein was determined in a controlled environment. Therefore, the results obtained in other operating environments may vary significantly. Some measurements may have been made on development-level systems and there is no guarantee that these measurements will be the same on generally available systems. Furthermore, some measurements may have been estimated through extrapolation. Actual results may vary. Users of this document should verify the applicable data for their specific environment.

Information concerning non-IBM products was obtained from the suppliers of those products, their published announcements or other publicly available sources. IBM has not tested those products and cannot confirm the accuracy of performance, compatibility or any other claims related to non-IBM products. Questions on the capabilities of non-IBM products should be addressed to the suppliers of those products.

All statements regarding IBM's future direction or intent are subject to change or withdrawal without notice, and represent goals and objectives only.

This information contains examples of data and reports used in daily business operations. To illustrate them as completely as possible, the examples include the names of individuals, companies, brands, and products. All of these names are fictitious and any similarity to the names and addresses used by an actual business enterprise is entirely coincidental.

#### COPYRIGHT LICENSE:

This information contains sample application programs in source language, which illustrate programming techniques on various operating platforms. You may copy, modify, and distribute these sample programs in any form without payment to IBM, for the purposes of developing, using, marketing or distributing application programs conforming to the application programming interface for the operating platform for which the sample programs are written. These examples have not been thoroughly tested under all conditions. IBM, therefore, cannot guarantee or imply reliability, serviceability, or function of these programs.

Each copy or any portion of these sample programs or any derivative work, must include a copyright notice as follows:

© (your company name) (year). Portions of this code are derived from IBM Corp. Sample Programs.

© Copyright IBM Corp. enter the year or years. All rights reserved.

If you are viewing this information softcopy, the photographs and color illustrations may not appear.



## Trademarks and service marks

IBM, the IBM logo, and ibm.com are trademarks or registered trademarks of International Business Machines Corporation in the United States, other countries, or both. If these and other IBM trademarked terms are marked on their first occurrence in this information with a trademark symbol (® or ™), these symbols indicate U.S. registered or common law trademarks owned by IBM at the time this information was published. Such trademarks may also be registered or common law trademarks in other countries. A current list of IBM trademarks is available on the Web at “Copyright and trademark information” at <http://www.ibm.com/legal/copytrade.shtml>.

Linux is a registered trademark of Linus Torvalds in the United States, other countries, or both.

Microsoft and Windows are trademarks of Microsoft Corporation in the United States, other countries, or both.

UNIX is a registered trademark of The Open Group in the United States and other countries.

Java and all Java-based trademarks and logos are trademarks of Sun Microsystems, Inc. in the United States, other countries, or both.

Other company, product, or service names may be trademarks or service marks of others.