



WebSphere ILOG RTS-RuleXpress Bridge V1.0 Tutorial

COPYRIGHT NOTICE

© Copyright IBM Corp. 1987, 2011

US Government Users Restricted Rights - Use, duplication or disclosure restricted by
GSA ADP Schedule Contract with IBM Corp.

Trademarks

IBM, the IBM logo, ibm.com, and WebSphere are trademarks or registered trademarks of International Business Machines Corp., in many jurisdictions worldwide. Other product and service names might be trademarks of IBM or other companies. A current list of IBM trademarks is available on the Web at [Copyright and trademark information](#). Adobe, the Adobe logo, PostScript, and the PostScript logo are either registered trademarks or trademarks of Adobe Systems Incorporated in the United States, and/or other countries.

Linux is a registered trademark of Linus Torvalds in the United States, other countries, or both.

Microsoft, Windows, Windows NT, and the Windows logo are trademarks of Microsoft Corporation in the United States, other countries, or both.

Java and all Java-based trademarks and logos are trademarks or registered trademarks of Oracle and/or its affiliates.

Other company, product, or service names may be trademarks or service marks of others.

Exchanging information between WebSphere ILOG Rule Team Server and RuleXpress Tutorial

Demonstrates how to exchange metadata about rules in Rule Team Server and RuleXpress

Before you start

To complete this tutorial:

- log in to Rule Team Server as rtsUser1 and select the loanvalidation-rules project in the Home page
- log in to RuleXpress as RuleXpress Administrator and select Manage Rules in the ILOG Sample community

Note: the general scenario used in the loanvalidation-rules project is described in the Rule Team Server Online Help

What you will learn

In this tutorial, you learn how to:

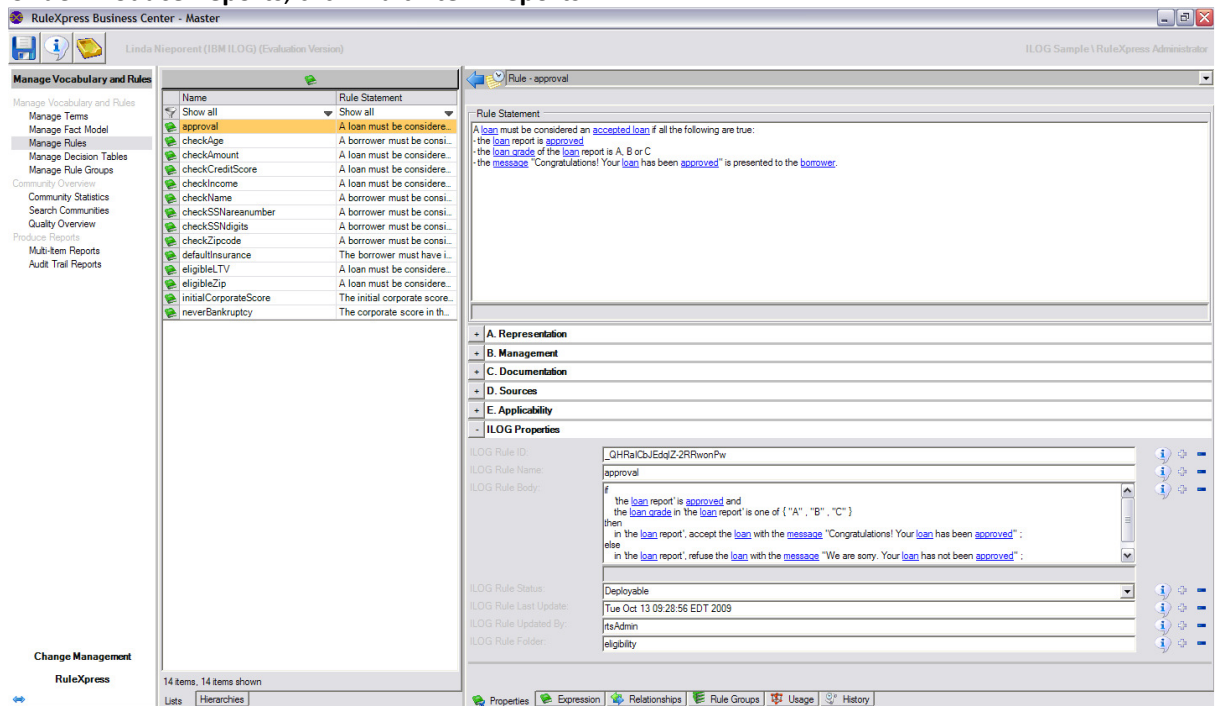
- Export business rule information from RuleXpress
- Import business rule information from RuleXpress into Rule Team Server
- View the imported rules and metadata in Rule Team Server
- Export business rule information from Rule Team Server
- Import business rule information from Rule Team Server into RuleXpress
- View the imported rules and metadata in RuleXpress

It will take you about 20 minutes to complete this tutorial.

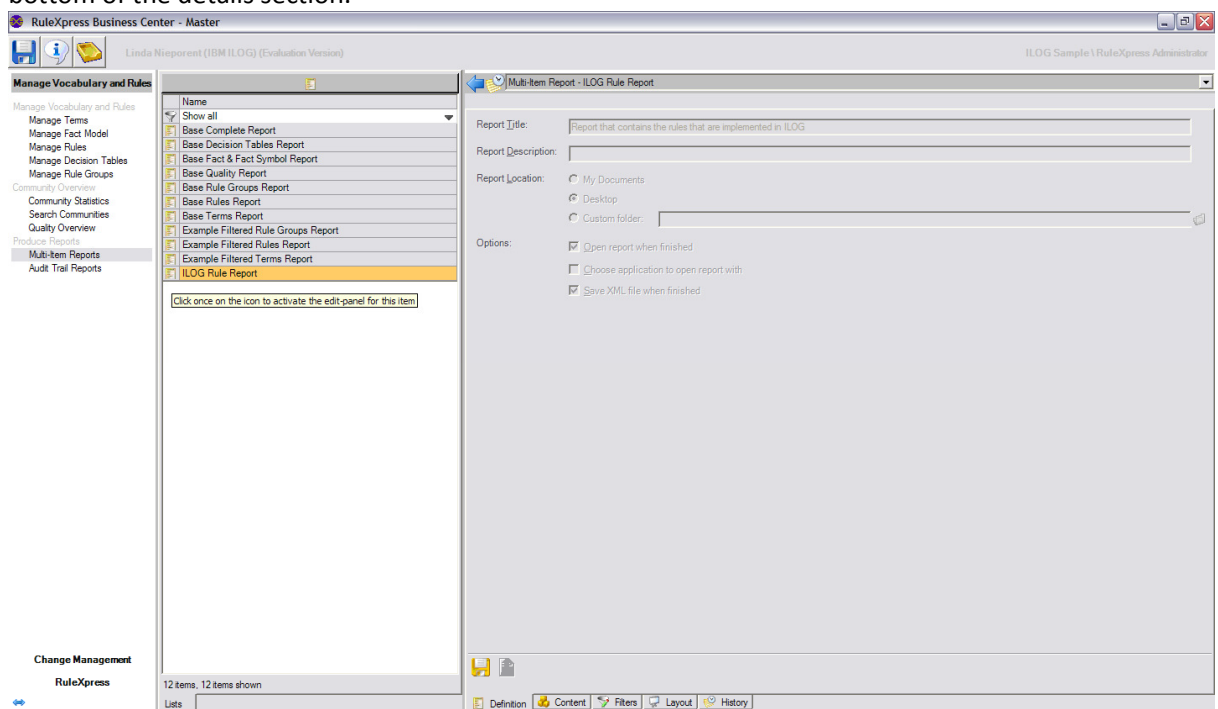
Task 1: Export business rules from RuleXpress

In this task you will generate a report from RuleXpress that includes the export file needed to exchange information with Rule Team Server.

1. Under **Produce Reports**, click **Multi-Item Reports**.



2. Select **ILOG Rule Report** from the list of reports available and click the **Disk** button at the bottom of the details section.



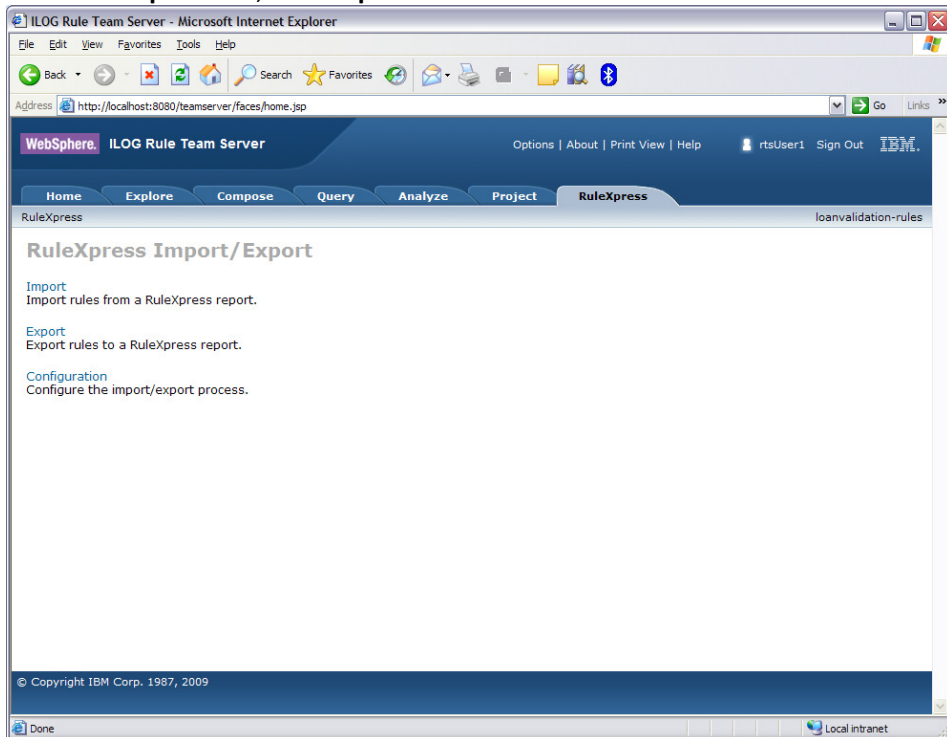
3. **Close** the browser window that pops up with the HTML version of the report. An XML version of the report is created in the background. By default it is stored on your Desktop. The XML file will be used in the next task.
4. **Close** RuleXpress.

Task 2: Import business rules into Rule Team Server

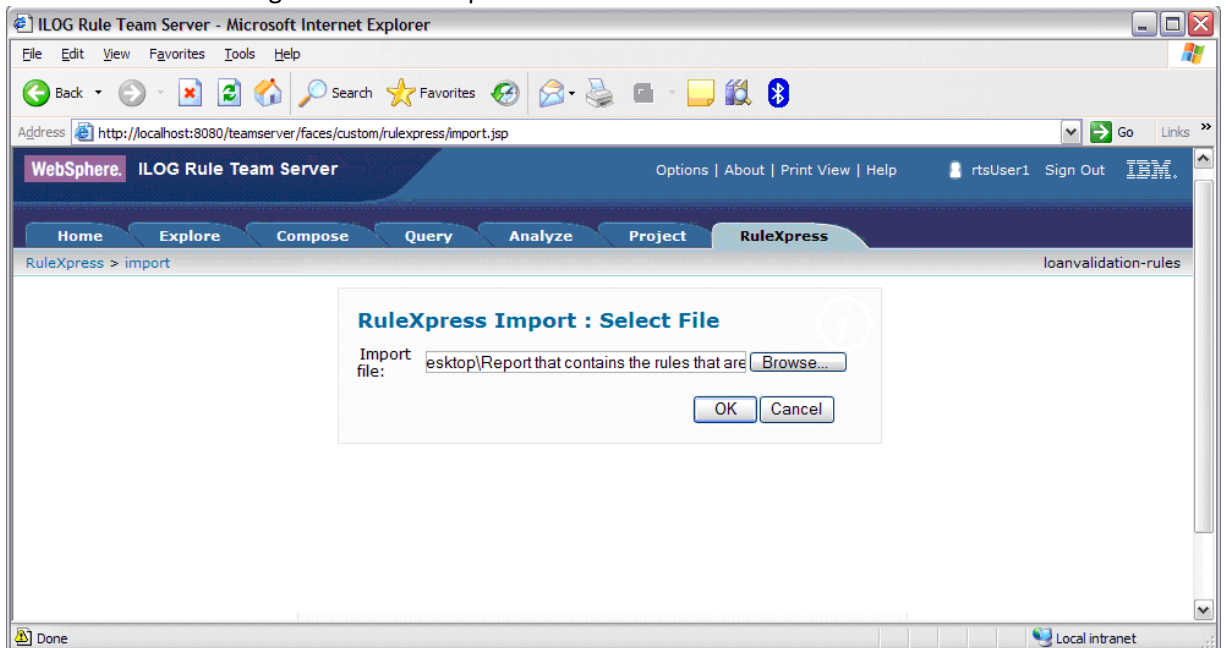
In this task you will import the exchange file from RuleXpress into Rule Team Server .

To import the exchange file:

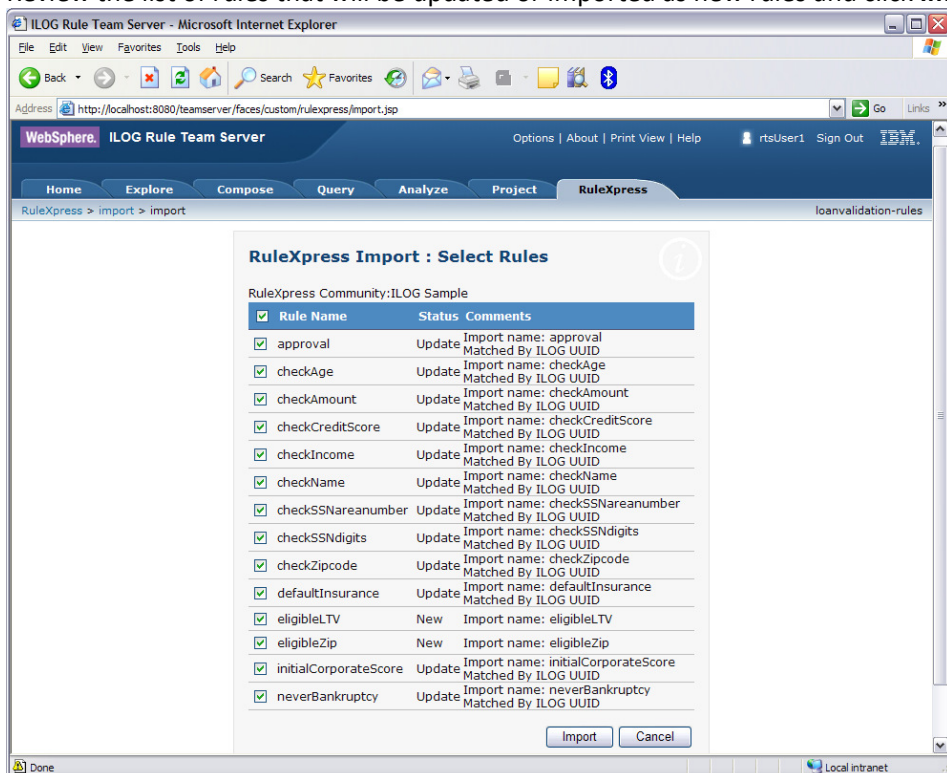
1. In the **RuleXpress** tab, click **Import**:



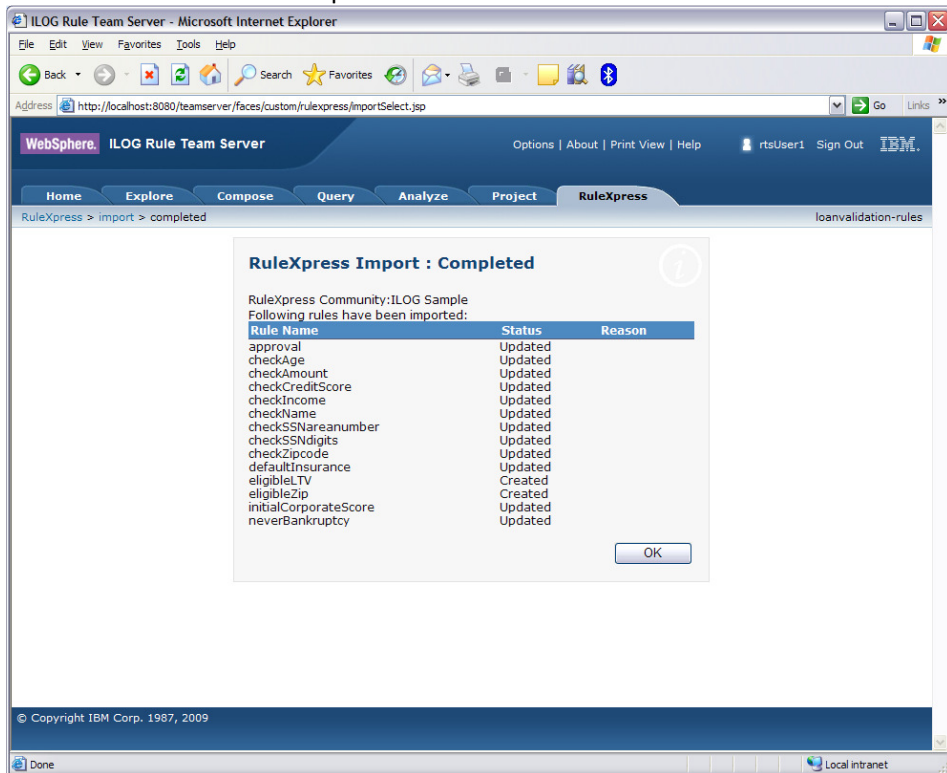
2. **Browse** to the xml file generated in the previous task and click **OK**.



3. Review the list of rules that will be updated or imported as new rules and click **Import**.



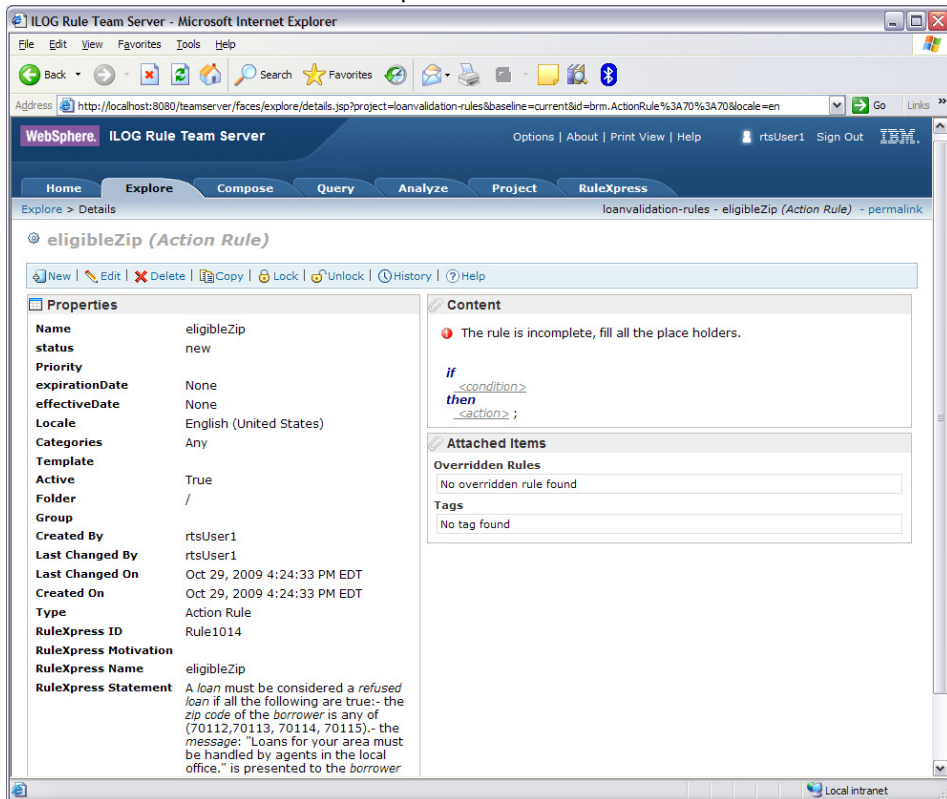
4. Review the results of the import and click **OK**.



Task 3: View imported information in Rule Team Server and author rules

In this task you will see the information brought in to Rule Team Server from RuleXpress and author a BAL rule based on the imported information from RuleXpress.

1. In the **Explore** tab click on the name of the new rule **eligibleZip** in the top level of the **Business Rules** smart view to see the RuleXpress metadata:



2. Click **Edit**.
3. In the **Properties** step of the Compose wizard, select the folder **eligibility** as the location of this new rule imported from RuleXpress and click **Next** to move to the **Content** step of the Compose

wizard.

The screenshot shows a web browser window titled "ILOG Rule Team Server - Microsoft Internet Explorer". The address bar shows the URL "http://localhost:8080/teamsrver/faces/compose/composeBusinessRule.jsp". The page header includes "WebSphere. ILOG Rule Team Server" and navigation links like "Options | About | Print View | Help". A user is logged in as "rtsUser1". The main navigation bar has tabs: "Home", "Explore", "Compose*", "Query", "Analyze", "Project", and "RuleXpress". The "Compose" tab is active, showing a wizard for creating a rule. The wizard has six steps: "Step 1: Properties", "Step 2: Content", "Step 3: Tags", "Step 4: Override Rules", "Step 5: Documentation", and "Step 6: Version Information". The "Properties" step is currently selected. The "Properties" form contains the following fields: "Name" (text input with value "eligibleZip"), "status" (dropdown menu with value "new"), "Priority" (text input), "expirationDate" (calendar icon with value "None"), "effectiveDate" (calendar icon with value "None"), "Categories" (dropdown menu with value "Any"), "Active" (checkbox checked), "Folder" (text input with value "/eligibility"), and "Group" (dropdown menu with value "<none>"). At the bottom of the form are four buttons: "Cancel", "Previous", "Next", and "Finish". The footer of the page shows "© Copyright IBM Corp. 1987, 2009". The browser's status bar at the bottom shows "Done" and "Local intranet".

Step 1: Properties
Step 2: Content
Step 3: Tags
Step 4: Override Rules
Step 5: Documentation
Step 6: Version Information

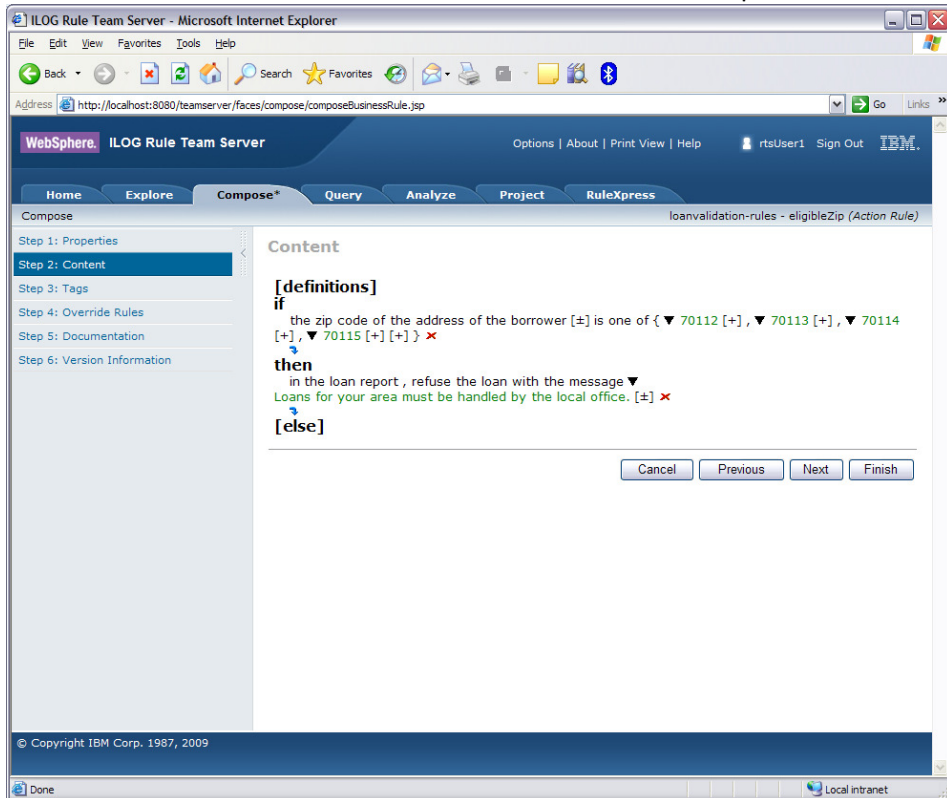
Properties

Name* eligibleZip
status* new
Priority
expirationDate None
effectiveDate None
Categories Any
Active ☒
Folder /eligibility
Group <none>

Cancel Previous Next Finish

© Copyright IBM Corp. 1987, 2009

4. Write the rule statement in BAL that matches the statement imported from RuleXpress:



5. Click **Finish**.

6. View the Details of the rule and compare the BAL statement to the RuleXpress statement.

ILOG Rule Team Server - Microsoft Internet Explorer

Address: <http://localhost:8080/teamserver/faces/compose/composeBusinessRule.jsp>

WebSphere. ILOG Rule Team Server Options | About | Print View | Help | rtsUser1 Sign Out IBM

Home Explore Compose Query Analyze Project RuleXpress

Explore > Details loanvalidation-rules - eligibleZip (Action Rule) - permalink

eligibleZip (Action Rule)

New | Edit | Delete | Copy | Lock | Unlock | History | Help

Properties

Name	eligibleZip
status	new
Priority	
expirationDate	None
effectiveDate	None
Locale	English (United States)
Categories	Any
Template	
Active	True
Folder	/eligibility
Group	
Created By	rtsUser1
Last Changed By	rtsUser1
Last Changed On	Oct 29, 2009 4:29:24 PM EDT
Created On	Oct 29, 2009 4:24:33 PM EDT
Type	Action Rule
RuleXpress ID	Rule1014
RuleXpress Motivation	
RuleXpress Name	eligibleZip
RuleXpress Statement	A loan must be considered a refused loan if all the following are true:- the zip code of the borrower is any of (70112,70113, 70114, 70115).- the message: "Loans for your area must be handled by agents in the local office." is presented to the borrower

Content

```

if
  the zip code of the address of 'the borrower' is one of { "70112" , "70113" , "70114" , "70115" }
then
  in 'the loan report' , refuse the loan with the message "Loans for your area must be handled by the local office." ;
  
```

Attached Items

Overridden Rules

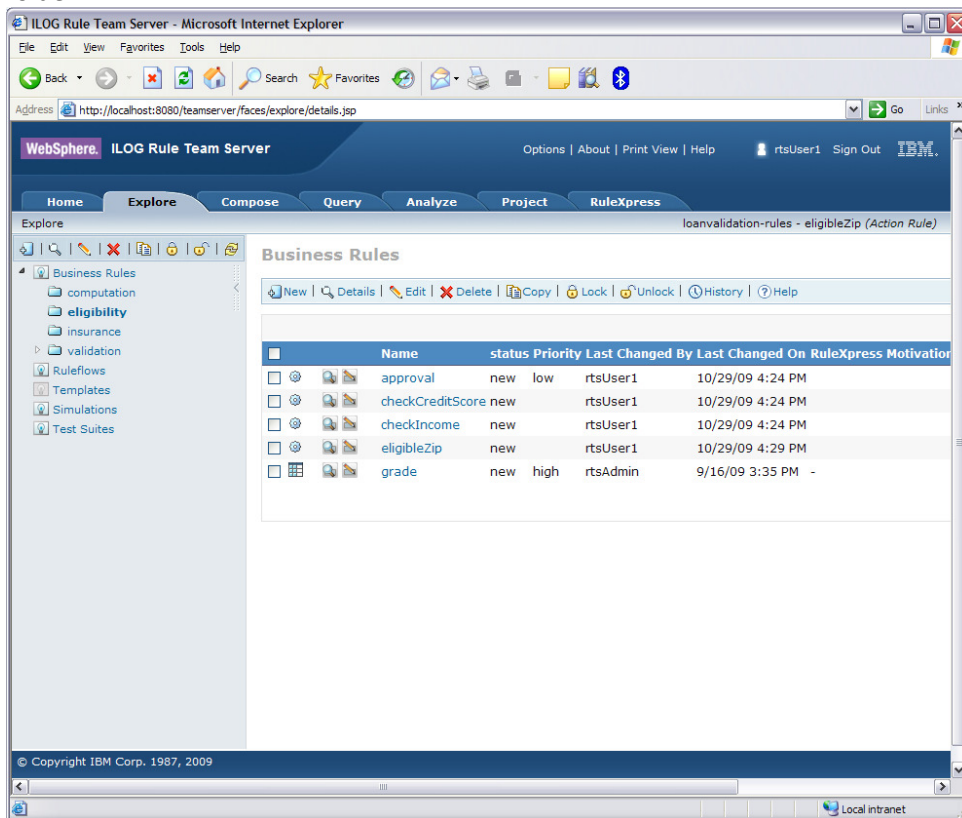
No overridden rule found

Tags

No tag found

Done Local intranet

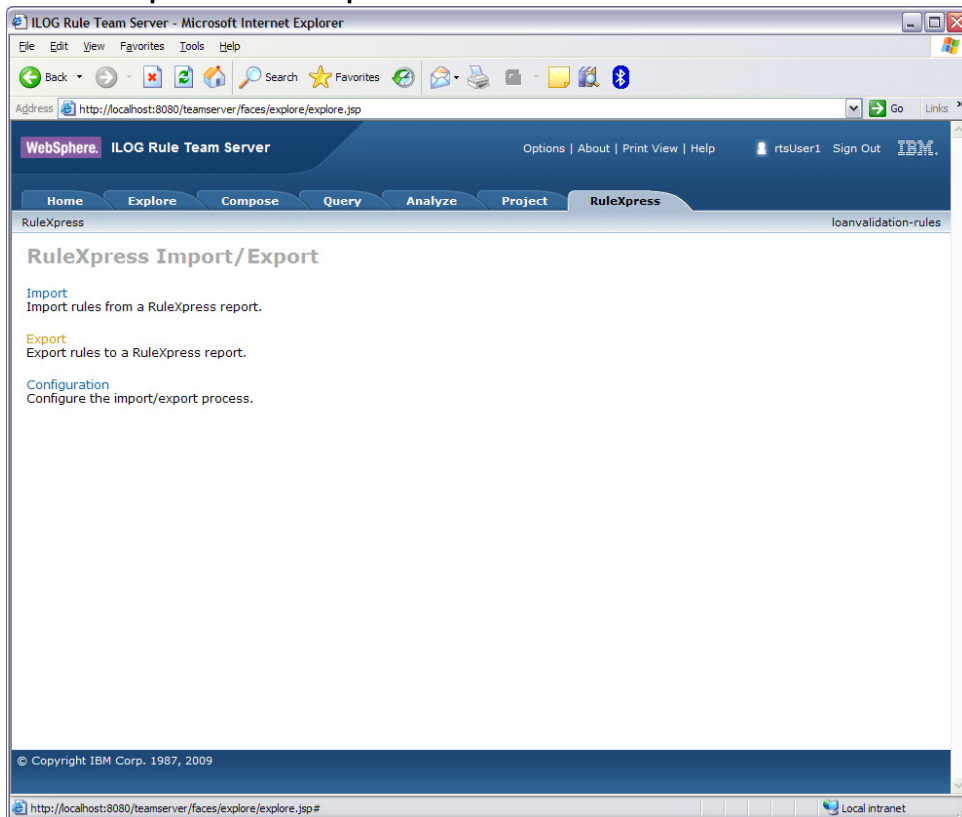
- Return to the Explore tab and notice that the rule eligibleZip is now shown in the eligibility folder.



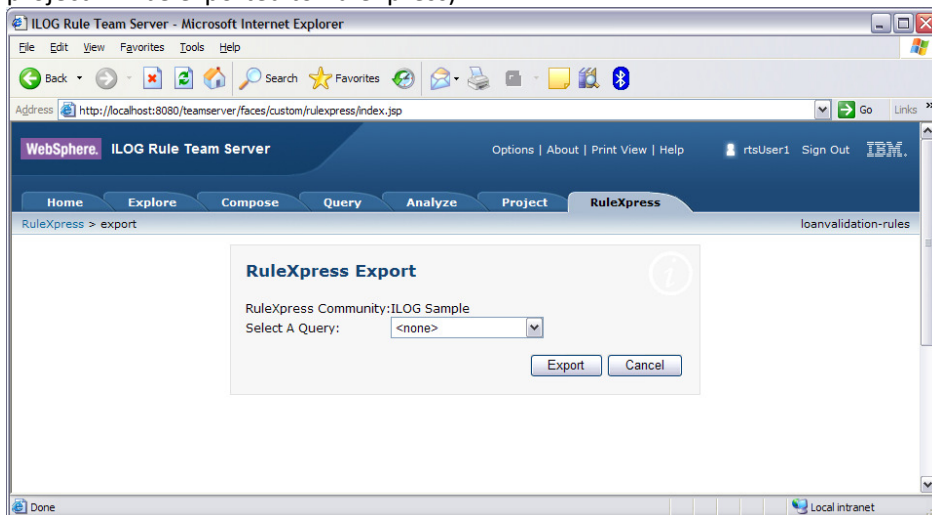
Task 4: Export business rules from Rule Team Server

In this task you will export business rules from Rule Team Server to be imported into RuleXpress.

1. In the **RuleXpress** tab click **Export**.



2. Click **Export** (leaving <none> as the selection for Query means all rules in the Rule Team Server project will be exported to RuleXpress).

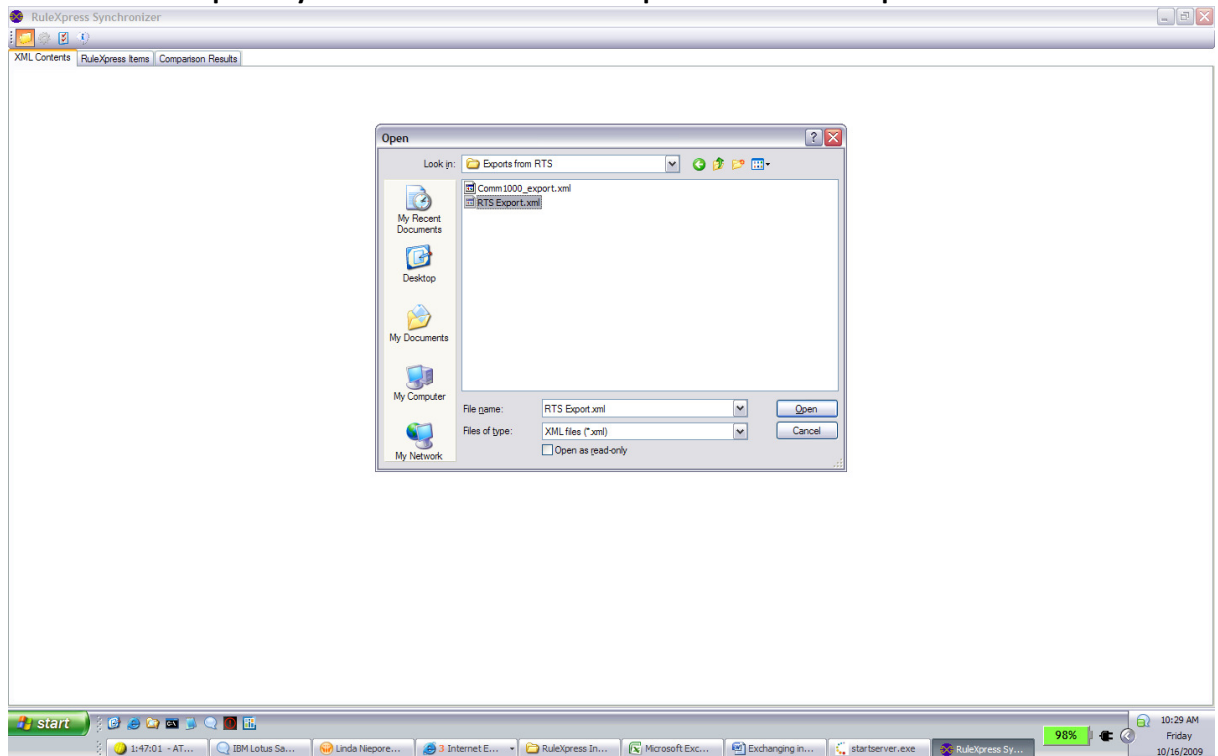


3. Save the file as **RTS Export file.xml**.

Task 5: Import business rule information into RuleXpress

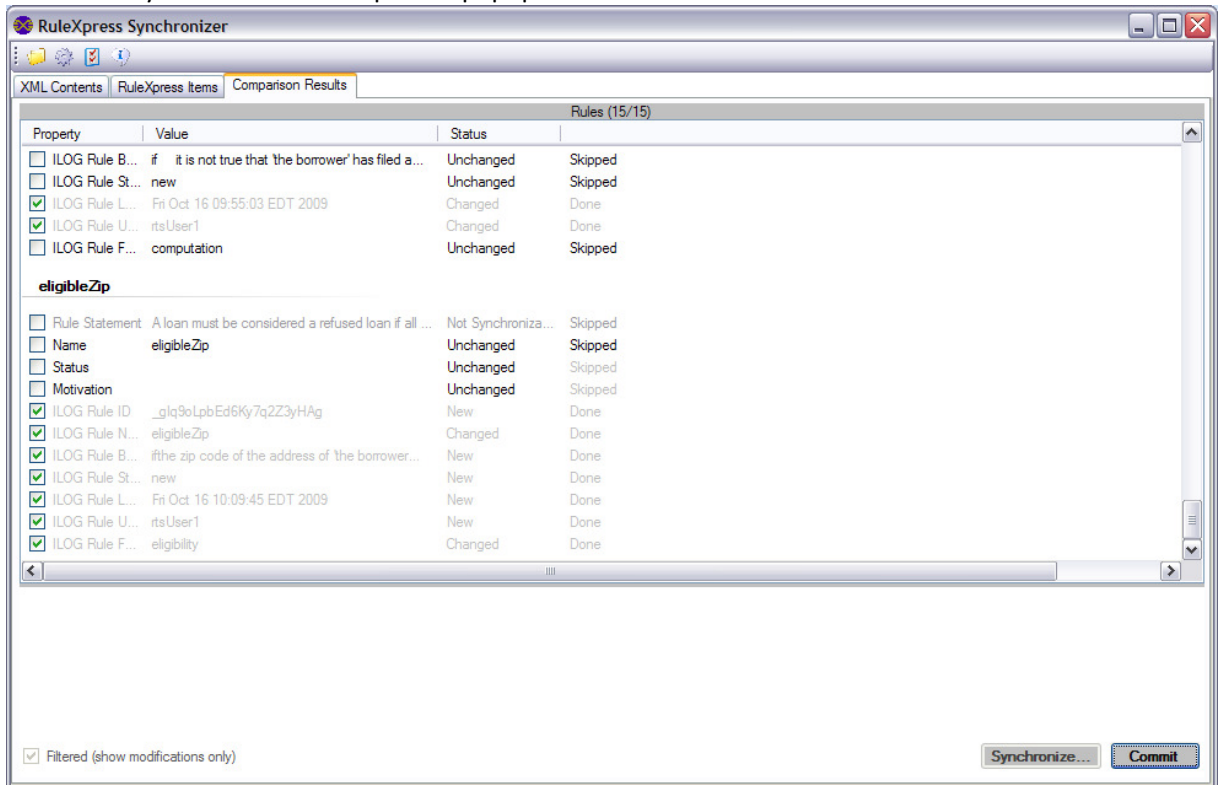
In this task you will run the RuleXpress Synchronizer to compare the contents of the Rule Team Server export file to the current contents of the RuleXpress repository and synchronize the changes to the RuleXpress repository.

1. Launch the **RuleXpress Synchronizer** and select **RTS Export file.xml**. Click **Open**.



2. View the differences identified between the RTS Export file and the current state of the RuleXpress repository.
You can uncheck any differences to exclude them from the synchronization.
Notice the following:
 - a. **repayment** is a new rule coming in from Rule Team Server
 - b. **eligibleZip** has updates to the ILOG properties, including the Rule Body since the BAL form of the rule was entered in Rule Team Server
 - c. other rules may have other updates, including last modification information, depending on how this project has been used in Rule Team Server since installation

- Click **Synchronize** to calculate the changes to be applied to the RuleXpress repository and click **OK** to the 'Synchronization completed' popup.



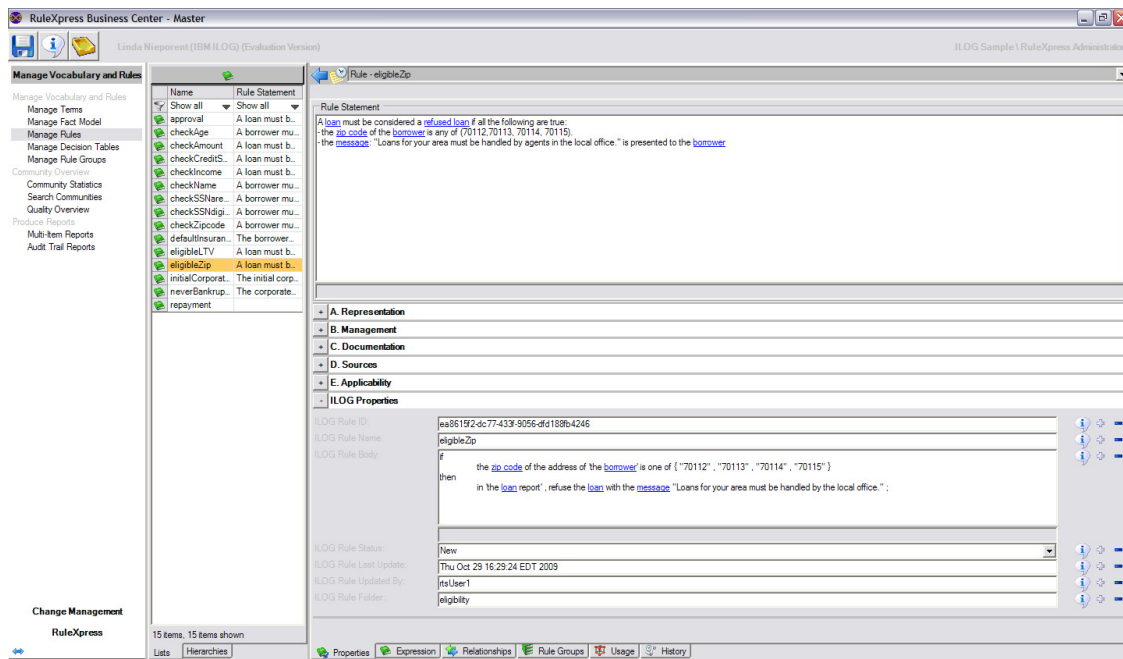
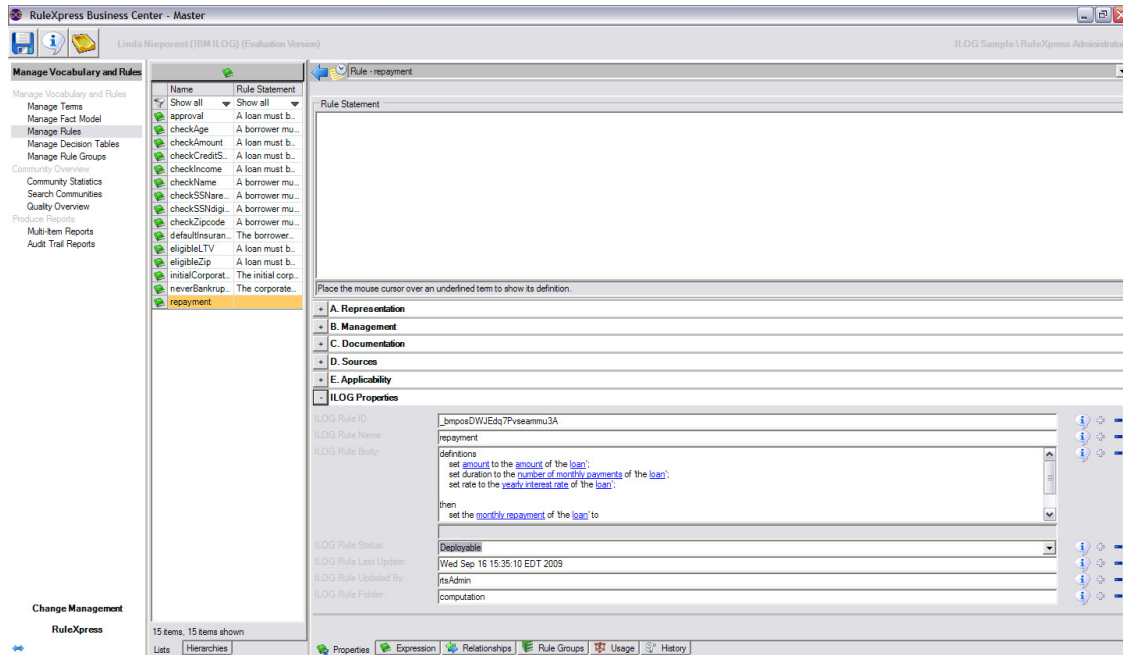
- Click **Commit** to save the changes to the RuleXpress repository.
- Close** the RuleXpress Synchronizer.

Task 6: View the imported business rule information in RuleXpress

In this task you will see the updated business rule information from Rule Team Server in RuleXpress.

- Launch RuleXpress and log in.
- Switch to the **ILOG Sample** community and select **Manage Vocabulary and Rules**.
- Select **Manage Rules**.
- Select the rule **repayment**. Note that it has no RuleXpress Rule Statement, but it does have ILOG Properties filled in (on the Properties tab).
- Select the rule **eligibleZip**. Note that it now has ILOG Properties filled in.

These tasks can be iterated repeatedly to send information back and forth between Rule Team Server and RuleXpress as information is added in each tool.



Congratulations! You have completed this tutorial.