



WebSphere software

IBM WebSphere Business Modeler Publishing Server Version 6.1.2

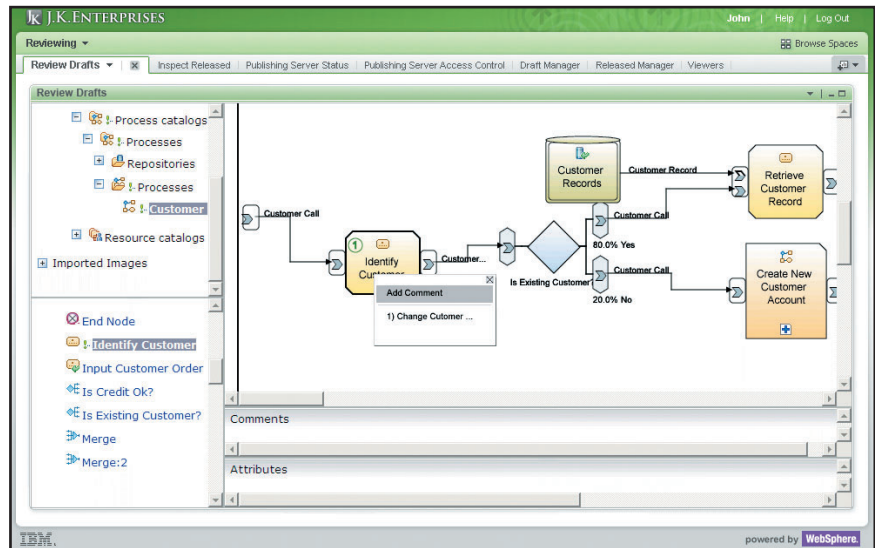
Highlights

- ***Allows users to share and collaborate with subject matter experts on a variety of BPM assets in a Web browser***
- ***Enables users to publish an array of BPM assets including process models, WebSphere Business Monitor dashboard designs and user interface forms***
- ***Provides enhanced process-model visuals to display labels and the latest WebSphere Business Modeler notation formats***
- ***Provides an easier installation and richer user interface on a lighter Web 2.0-based platform***
- ***Updated support for SUSE Linux[®] Enterprise Server 10 (SLES) on Intel[®] and Red Hat Enterprise Linux 5 on Intel***

IBM WebSphere[®] Business Modeler Publishing Server is a modeling collaboration tool focused on improving your overall end-to-end business process management (BPM) experience. It enables users to publish business process assets to a Web-based server where multiple subject matter experts can view and review the information simultaneously through a standard Web browser. If you are looking to understand or improve your business, IBM WebSphere Business Modeler Publishing Server can help you develop a collaborative environment within your organization as you design and build your BPM assets. IBM WebSphere Business Modeler Publishing Server also serves as an important communication and training mechanism to share your released process models with your operational staff. This release

of WebSphere Business Modeler Publishing Server delivers improved visuals and broadens the scope of elements that can be published.

The goals of BPM are business agility, continuous process improvement and business model innovation to support strategic goals, and then to measure and manage performance against these goals. By modeling and monitoring your business processes, you can gain better insight and visibility into your company's operations, enabling you to make smarter decisions to achieve greater performance results. WebSphere Business Modeler Publishing Server, a key part of the IBM BPM Suite, can be a critical component in this equation by helping you to ensure that your business models and other BPM assets are completely and accurately defined, and have been reviewed and commented upon by experts in the area so that suggested improvements get incorporated. This capability facilitates continuous improvement in a controlled and structured manner. And you can achieve results quickly through the product's collaboration capabilities, which enable subject matter experts to work together to define business models that accurately represent your business.



Subject matter experts can collaborate and comment on a process model diagram using WebSphere Business Modeler Publishing Server.

Publish business processes easily

Users can access WebSphere Business Modeler Publishing Server through the Web. This provides both personalization and role-based access. Also, the powerful review facility of WebSphere Business Modeler Publishing Server enables users to comment on the various aspects of a process model or imported graphical images and then store the comments so they are available to the appropriate users, who can then take action based on those comments.

A related product, IBM WebSphere Business Modeler, creates visual representations of business processes along with supporting information. The business modeler allows you to perform

powerful analysis to help you make business process improvements. An important step in modeling the business processes is to validate the process and its data by making the business processes available so that subject matter experts and other interested parties can review them. WebSphere Business Modeler Publishing Server lets you use WebSphere Business Modeler to publish an entire business process modeling project, or just parts of it, to a server. The subject matter experts and other reviewers can then view the process diagrams and their supporting information using a standard Web browser. By publishing business

processes more widely, you increase the likelihood of the model being accurate and help the adoption of the business process across an organization.

A published business process can also serve as a training tool for new employees. The business process model presents new employees with a high-level view of their role in the company and enables them to clearly identify the tasks they are expected to perform. You can also help identify what the employees need to do in certain conditions, if the model has that level of detail.

Along with viewing business processes, authorized reviewers can use WebSphere Business Modeler Publishing Server to comment on a diagram or its supporting information. Because comments are visible and other reviewers can respond to them, WebSphere Business Modeler Publishing Server provides a forum for discussing and resolving differences of opinion on a business process. The comments and responses are tracked by originator, date and time of creation. These comments and responses can then be exported, which permits the modeling team to update the model, making it more accurate.

WebSphere Business Modeler Publishing Server also allows authorized reviewers to post attachments such as Microsoft® Word documents. Through the attachments, reviewers can provide the modeling team with additional information that they can use to update the business processes.

Product components

WebSphere Business Modeler Publishing Server has three major components:

- *Publisher*
- *Publishing server*
- *Client*

Publisher

The publisher is a plug-in for WebSphere Business Modeler that takes modeling projects or selected elements from a modeling project and publishes them to the publishing server. The publisher acts as a gateway to the publishing server. The user performing the role of publisher selects which projects or model elements to publish and which publishing server will host the published project.

A project or model element from WebSphere Business Modeler is published as a draft project. An administrator can provide authorized access to a draft project, change a draft project to a

released project, and provide authorized access to a released project. The information published in either draft or released mode corresponds with the information contained in the advanced mode of WebSphere Business Modeler. This feature is beneficial when working with multiple versions of the business process models because a consistent level of information is shown to all users.

Publishing server

The publishing server hosts published business-process modeling projects. The server includes IBM WebSphere Application Server and a database. WebSphere Application Server manages the display of the business process information in four frames, with another frame for displaying comments. The database stores the comments. The publishing server also has an administration page from which an authorized user can define user access, as well as manage business processes and comments on the server.

Client

The client is a standard Microsoft Internet Explorer Web browser with the Scalable Vector Graphics (SVG) Viewer plug-in. Using the SVG Viewer, you can zoom in and out of the process diagrams. To access a published business

process model and images, you enter the model's Web site on the publishing server. After you log on to the publishing server, the client displays the frames being served. The information displayed by the frames depends on what elements or buttons you have clicked in any of the frames.

You must first select a process or element in order to view published business process models. Then, you can view its associated attribute information and any comments or responses—or you can add new comments and responses using the comments frame. You can also associate other read-only documents or Web sites to the comment in the view portlets to help provide more contextual information about the element.

Enhance collaboration on process models

With WebSphere Business Modeler Publishing Server, your business analysts and development teams can collaborate more effectively. This collaboration helps to ensure better resource optimization and helps you identify and eliminate process inefficiencies and errors. You can use this increased communication to enable continuous business process improvements—and

these can help you achieve greater profitability and increase market share for your business.

What's new in WebSphere Business Modeler Publishing Server, Version 6.1.2

WebSphere Business Modeler Publishing Server 6.1.2 offers a number of collaboration enhancements, including:

The ability to collaborate and improve process models and dashboard designs while maintaining a record of the communication thread

IBM WebSphere Business Modeler Publishing Server can now display process models created with the Business Process Modeling Notation (BPMN) from WebSphere Business Modeler. BPMN is a standard graphical notation for drawing business process models or using the graphics that are standard to your methodology. This helps to improve the communication and understanding of the process model between process modeling practitioners, such as business analysts, within your organization.

New capabilities allow subject matter experts to collaborate on process assets across the IBM BPM Suite.

For example, users of WebSphere Business Modeler Publishing Server can now import user-interface form views for human tasks, and then review and comment on these forms. Business analysts and IT developers can collaborate on imported dashboard designs intended for business users of WebSphere Business Monitor, a business activity monitoring product that is a core part of the WebSphere Dynamic Process Edition, a foundational offering of the IBM BPM Suite.

Improved user experience and expanded platform and infrastructure currency

IBM WebSphere Business Modeler Publishing Server now incorporates a simplified user interface using Web 2.0 technologies. These technologies improve the interactive functions and provide a richer user experience.

IBM WebSphere Business Modeler Publishing Server supports SUSE Linux® Enterprise Server 10 (SLES) on Intel® and Red Hat Enterprise Linux 5 on Intel. This extends the installation options for IBM WebSphere Business Modeler Publishing Server to more current platform technologies.



For more information

To learn more about IBM WebSphere Business Modeler Publisher Server, Version 6.1.2, contact your IBM representative or IBM Business Partner, or visit:

ibm.com/software/integration/modeler/publishingserver/

For more information about IBM WebSphere Business Modeler Publisher Server, Version 6.1.2 system requirements, visit:

ibm.com/software/integration/modeler/publishingserver/sysreqs/

© Copyright IBM Corporation 2008.

IBM Corporation
Software Group
Route 100
Somers, NY 10589
U.S.A

Produced in the United States of America
July 2008
All Rights Reserved

IBM, the IBM logo, ibm.com and WebSphere are trademarks or registered trademarks of International Business Machines Corporation in the United States, other countries or both. If these and other IBM trademarked terms are marked on their first occurrence in this information with a trademark symbol (® or ™), these symbols indicate U.S. registered or common law trademarks owned by IBM at the time this information was published. Such trademarks may also be registered or common law trademarks in other countries. A current list of IBM trademarks is available on the Web at "Copyright and trademark information" at ibm.com/legal/copytrade.shtml.

Intel is a registered trademark of Intel Corporation or its subsidiaries in the United States and other countries.

Linux is a registered trademark of Linus Torvalds in the United States, other countries or both.

Microsoft is a trademark of Microsoft Corporation in the United States, other countries or both.

Other company, product or service names may be trademarks or service marks of others.

References in this publication to IBM products or services do not imply that IBM intends to make them available in any other countries.

TAKE BACK CONTROL WITH 