



IBM Software

**Innovate2012**

The Premier Event for Software and Systems Innovation


Roma, 11 ottobre 2012



**Luca Sentimenti  
Gianluca Monticone  
Giulio Santoli**


**Generazione automatica di  
documentazione in ambienti complessi**

## Agenda

- 
- 1 IBM Rational Collaboration Lifecycle Management for System and Software Engineering
  - 2 Demo
  - 3 Questions and Answers



## Agenda

- 
- 1 IBM Rational Collaboration Lifecycle Management for System and Software Engineering
  - 2 Demo
  - 3 Questions and Answers



## Rational Solution Portfolio for SSE CLM

### Rational solution for Systems and Software Engineering



*Open Services for Lifecycle Collaboration*

#### **REQUIREMENTS MANAGEMENT**

Manage all system requirements with full traceability across the lifecycle

**Rational DOORS**

#### **QUALITY MANAGEMENT**

Achieve "quality by design" with an integrated, automated testing process

**Rational Quality Manager**

#### **DESIGN MANAGEMENT**

Use modeling to validate requirements, architecture and design throughout the development process

**Rational Rhapsody & Design Manager**

#### **COLLABORATION, PLANNING & CHANGE MANAGEMENT**

Collaborate across diverse engineering disciplines and development teams

**Rational Team Concert**

*Jazz*

## Rational Solution Portfolio for SSE CLM - RM

### Rational solution for Systems and Software Engineering

 *Open Services for Lifecycle Collaboration*



#### REQUIREMENTS MANAGEMENT

Manage all system requirements with full traceability across the lifecycle

**Rational DOORS**

#### QUALITY MANAGEMENT

Achieve "quality by design" with an integrated, automated testing process

**Rational Quality Manager**

#### DESIGN MANAGEMENT

Use modeling to validate requirements, architecture and design throughout the development process

**Rational Rhapsody & Design Manager**

#### COLLABORATION, PLANNING & CHANGE MANAGEMENT

Collaborate across diverse engineering disciplines and development teams

**Rational Team Concert**

*Jazz*



## Rational DOORS for Requirement Management

*Manage All Requirements Across the Lifecycle and Across Disciplines*

- Highly flexible display gives the right people the right information at the right time
- Intuitive interface means you'll be up and running quickly
- Document based for efficient organization and reporting
- Classic or Web Access client on the same database

The image displays three overlapping screenshots of the Rational DOORS software interface. The top screenshot shows a 'Formal module' window with a tree view of requirements and a table of details. The middle screenshot shows a 'User Requirements' window with a hierarchical tree on the left and a main text area containing sections like '1 Introduction', '1.1 Schedule', and '2 User types'. The bottom screenshot shows the 'Rational DOORS Web Access' interface in a Mozilla Firefox browser, featuring a sidebar with project navigation, a central 'System Requirements' view with a bar chart and text, and a right-hand 'Attributes' panel with various metadata fields.

both

## Rational Solution Portfolio for SSE CLM - DM

### Rational solution for Systems and Software Engineering



*Open Services for Lifecycle Collaboration*

#### REQUIREMENTS MANAGEMENT

Manage all system requirements with full traceability across the lifecycle

**Rational DOORS**

#### QUALITY MANAGEMENT

Achieve "quality by design" with an integrated, automated testing process

**Rational Quality Manager**



#### DESIGN MANAGEMENT

Use modeling to validate requirements, architecture and design throughout the development process

**Rational Rhapsody & Design Manager**

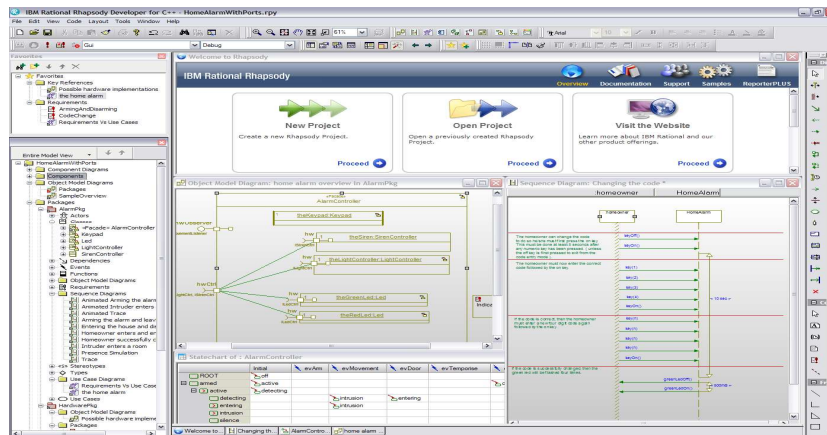
#### COLLABORATION, PLANNING & CHANGE MANAGEMENT

Collaborate across diverse engineering disciplines and development teams

**Rational Team Concert**

Jazz

## Systems & Software Engineering with Rational Rhapsody®



### Capabilities

- Requirements-driven analysis and design for technical, embedded or real-time solutions, including those based on *multi-core* architectures
- Rapid design validation and verification with frequent simulation and testing
- Development and deployment of complete C, C++, C#, Java and Ada applications

### Benefits

- **Build the right product** through non-ambiguous communication and frequent collaboration
- **Eliminate defects early** and increase quality by continually testing the design
- **Reduce development time** by automatically generating applications and documentation
- **Re-use and adapt existing technology** through reverse engineering and product line engineering

*"Using Rhapsody software improves the quality of the application software that is integral to the series hydraulic hybrid system development process."*

*Steve Zielinski, Eaton chief engineer for software*





## Rational Solution Portfolio for SSE CLM

### Rational solution for Systems and Software Engineering



*Open Services for Lifecycle Collaboration*

#### **PUBLISHING & REUSE**

Automated Documents Generation and Asset Management for governance and reuse

**Rational Publishing Engine**

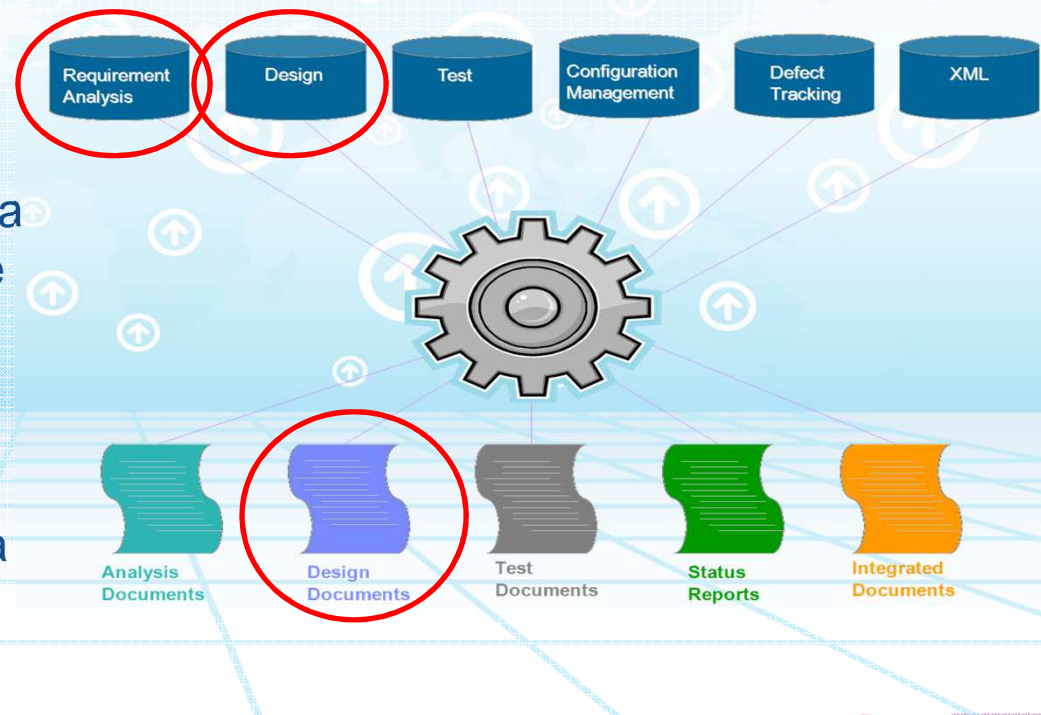
**Rational Asset Manager**




## Rational Publishing Engine: document automation across the development lifecycle



- Create documents from data across a wide range of distributed and diverse data sources
- Access data from a wide range of Rational tools
- Access data from third party tools via XML and REST interfaces



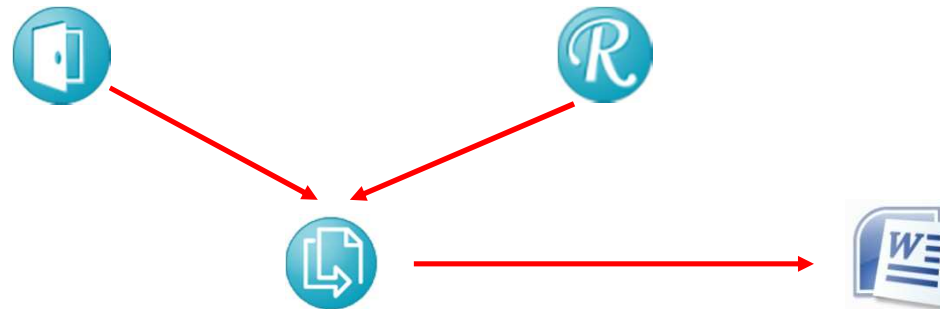
## Agenda

- 
- 1 IBM Rational Collaboration Lifecycle Management for System and Software Engineering
  - 2 Demo
  - 3 Questions and Answers



## Demo Scenario

- Requirements are managed in Rational DOORS
- Architectural Design is managed in Rational Rhapsody and linked back to Reqs
- Documentation automatically produced by Rational Publishing Engine





## RPE can use DOORS attributes to populate corporate templates

IBM Italia

Nome	Descrizione	Valore
CDRL item number	N. CDRL (MIL-STD)	9876
contract number	contract number (MIL-STD)	Innovate 2012
Created By	System Attribute	Bill Young
Created On	System Attribute	giovedì 6 settembre 2007
Descrizione Tipo	Attributo "Descrizione Tipo" di PDMLink	Specifica di Sistema
document date	Data di rilascio del documento (MIL-STD)	giovedì 27 settembre 2012
document number	Identificativo del documento (MIL-STD)	123456
document revision	Revisione del documento (MIL-STD)	3.0
document title	Titolo del documento (MIL-STD)	System Requirements
document type	Tipo del documento	SSS

PROGRAMMA: New Car System Program

**System Requirements**

(SSS)

PER

New Car System

N. CDRL: 9876

N. Programma: 1000

Codice Identificativo: Innovate 2012

## RPE template can interpret DOORS attribute in DOORS objects



The screenshot shows the DOORS application interface with a table of requirements and a traceability table below it. Red arrows highlight the relationship between the two tables.

ID	Car system requirements:	IsRequirement	Parent Requirement	Title
TRN-SR-5	The car shall be able to move forwards at all speeds from 0 to 220 kilometers per hour on standard flat roads with winds of 0 kilometers per hour, with 280 BHP.	True	TRN-CSR-26 TRN-CSR-27 TRN-CSR-41 TRN-CSR-97	Car Speed
TRN-SR-6	<b>2.1.1.2 Move backwards</b>			
TRN-SR-7	The car shall be able to move backwards to a maximum speed of 25 Kilometers per hour.	True	TRN-CSR-30	Backward Speed
TRN-SR-8	<b>2.1.2 Accelerate car</b>			

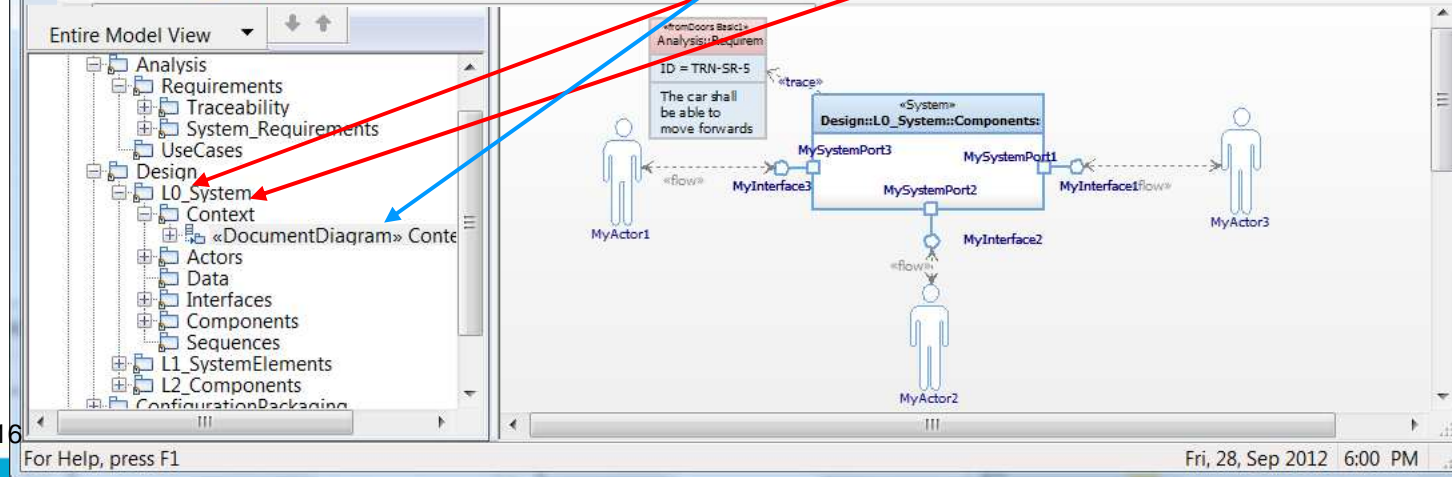
  

Requisito di System Requirements		Requisito Satisfies out		
Id	Posizione	Id	Denominazione	Rif.
TRN-SR-5	2.1.1.1.0-1	TRN-CSR-26 TRN-CSR-27 TRN-CSR-41 TRN-CSR-97	Users shall be able to travel at speeds ... Users shall be able to accelerate from 0 ... Users shall be able to travel in safety ... The user shall be able to travel on stan ...	3.1.3.1.1.0-1 3.1.3.1.1.0-2 3.1.5.0-1 3.1.14.0-1
TRN-SR-7	2.1.1.2.0-1	TRN-CSR-30	Users shall be able to move backwards to ...	3.1.3.1.2.0-1
TRN-SR-9	2.1.2.0-1	TRN-CSR-27 TRN-CSR-98	Users shall be able to accelerate from 0 ... The user shall be able to travel up and ...	3.1.3.1.1.0-2 3.1.14.0-2
TRN-SR-10	2.1.2.0-2	TRN-CSR-98 TRN-CSR-124	The user shall be able to travel up and ... Users shall be able to accelerate from 1 ...	3.1.14.0-2 3.1.3.1.1.0-3
TRN-SR-11	2.1.2.0.3	TRN-CSR-...	Users shall be able to accelerate from 1 ...	3.1.3.1.1.0-4

## Requirements and Model: Rhapsody export driven from DOORS module



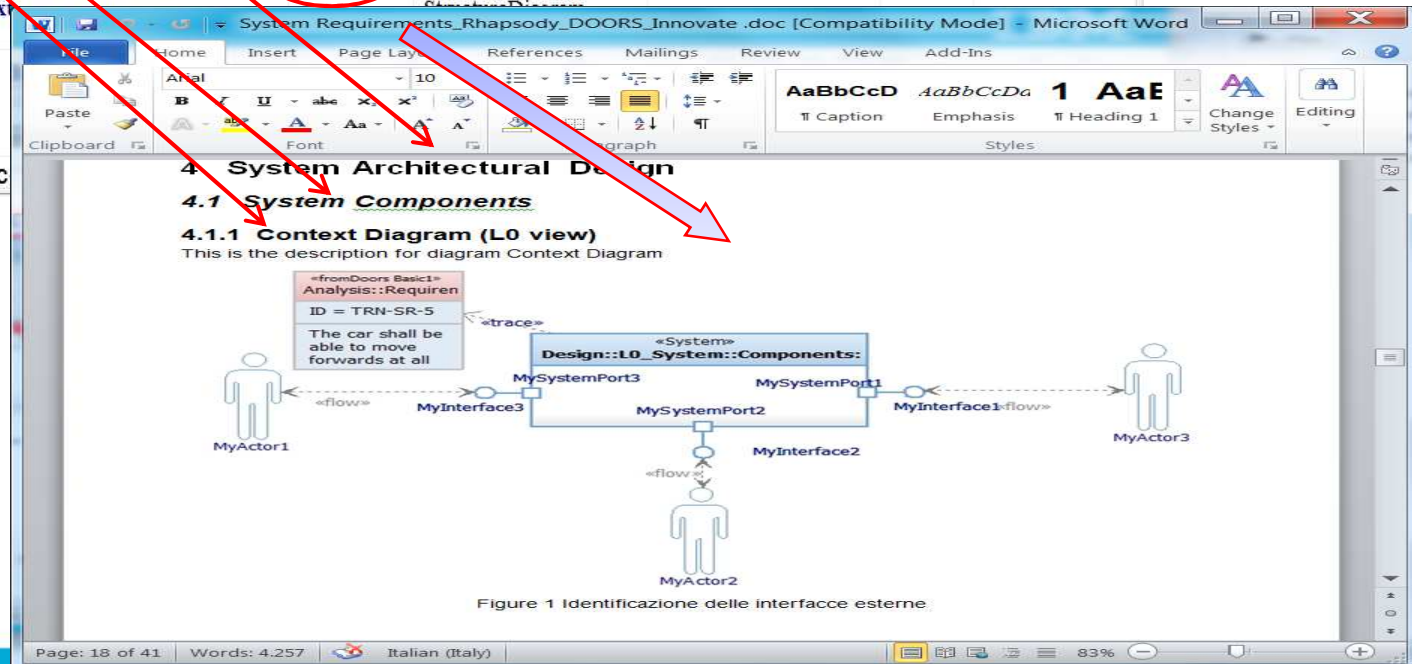
ID	Car system requirements	Object Type	UML Kind	UML Location	UML Level	UML Package
TRN-SR-171	<b>4 System Architectural Design</b>					
TRN-SR-172	<b>4.1 System Components</b>					
TRN-SR-173	<b>4.1.1 Context Diagram (L0 view)</b>					
TRN-SR-174	<b>Descrizione del Context Diagram (L0) Diagramma di Context</b>	UML	ObjectModelDiagrams StructureDiagram ClassDiagram	L0_System	2	Context
TRN-SR-175	Actors	UML	ObjectModelDiagrams Actor StructureDiagram ClassDiagram	L0_System	2	Actors
TRN-SR-176	<b>4.1.2 System Decomposition (L1)</b>					






## Requirements and Model: Rhapsody export driven from DOORS module

ID	Car system requirements	Object Type	UML Kind	UML Location	UML Level	UML Package
TRN-SR-171	<b>4 System Architectural Design</b>					
TRN-SR-172	<b>4.1 System Components</b>					
TRN-SR-173	<b>4.1.1 Context Diagram (L0 view)</b>					
TRN-SR-174	Descrizione del Context Diagram (L0) Diagramma di Context		UML	ObjectModelDiagrams ContextDiagram	L0_System	2 Context
TRN-SR-175	Actors					
TRN-SR-176	<b>4.1.2 System Dec</b>					



## Agenda

- 
- 1 IBM Rational Collaboration Lifecycle Management for System and Software Engineering
  - 2 Demo
  - 3 Questions and Answers



# QUESTIONS





[www.ibm.com/software/rational](http://www.ibm.com/software/rational)

© Copyright IBM Corporation 2012. All rights reserved. The information contained in these materials is provided for informational purposes only, and is provided AS IS without warranty of any kind, express or implied. IBM shall not be responsible for any damages arising out of the use of, or otherwise related to, these materials. Nothing contained in these materials is intended to, nor shall have the effect of, creating any warranties or representations from IBM or its suppliers or licensors, or altering the terms and conditions of the applicable license agreement governing the use of IBM software. References in these materials to IBM products, programs, or services do not imply that they will be available in all countries in which IBM operates. Product release dates and/or capabilities referenced in these materials may change at any time at IBM's sole discretion based on market opportunities or other factors, and are not intended to be a commitment to future product or feature availability in any way. IBM, the IBM logo, Rational, the Rational logo, Telelogic, the Telelogic logo, and other IBM products and services are trademarks of the International Business Machines Corporation, in the United States, other countries or both. Other company, product, or service names may be trademarks or service marks of others.

