

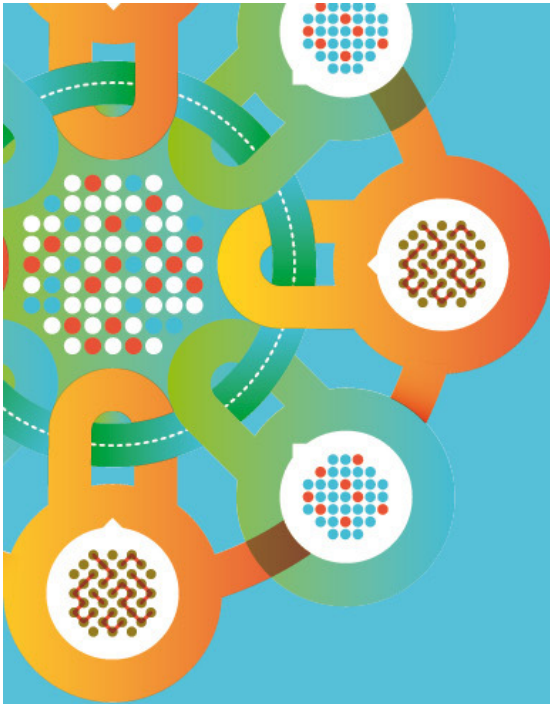
IBM Forum Segrate - Milano



# 18 settembre: Missione Sicurezza

Identifica e combatti i rischi con la Security Intelligence IBM

**Andrea Carmignani e  
Giovanni Todaro**  
Le sfide del CISO





**With explosive growth in connectivity and collaboration, information security is becoming increasingly complex and difficult to manage**

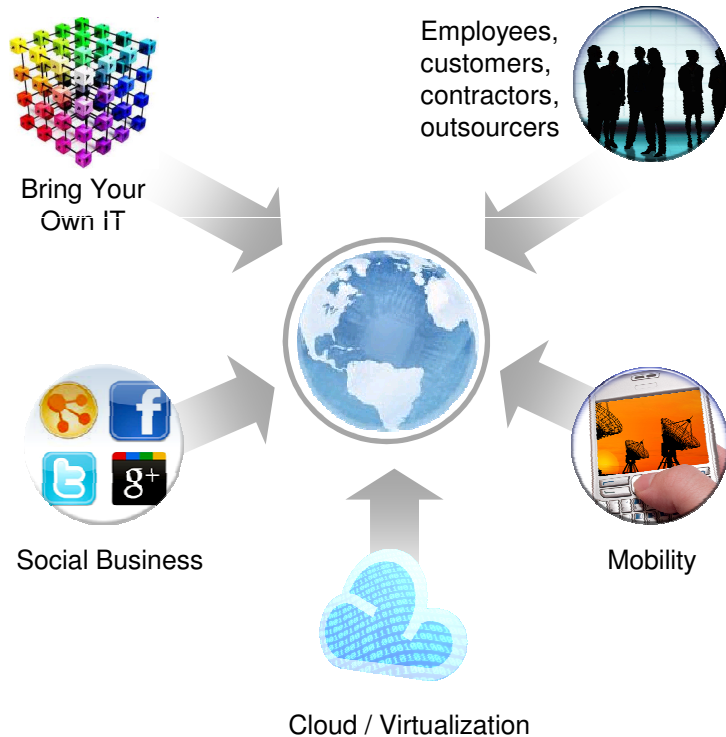
***In 2011, the corporate world experienced one of highest data loss total***

***The number of mobile workers is expected to reach 1.3 billion by 2015***

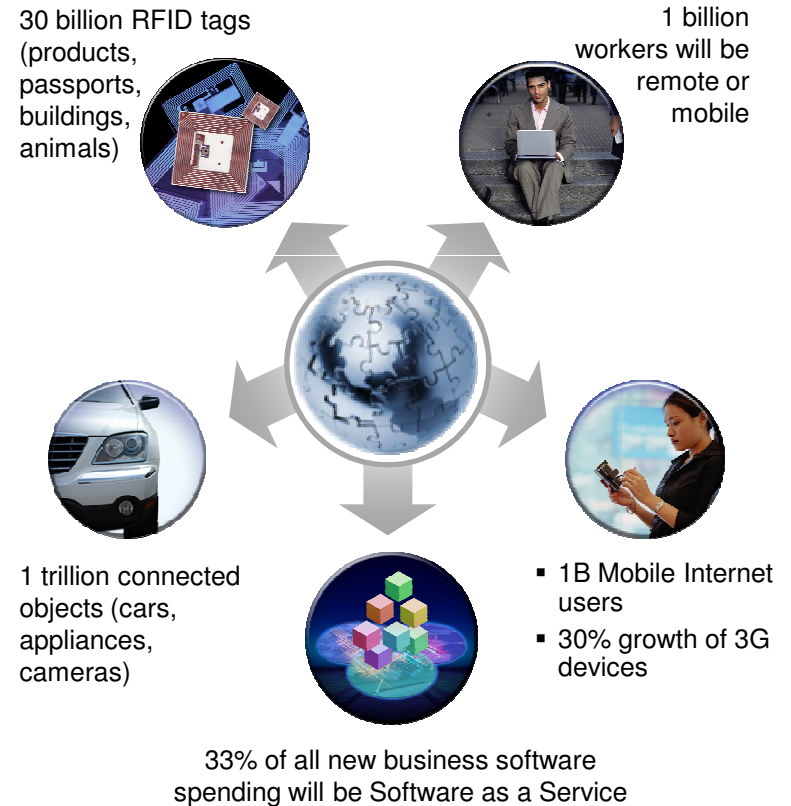
***At the same time, mobile security threats are increasing – up almost 20 percent in 2011***

# Number of Vulnerabilities increase radically with emergence of mobile, cloud, BYOD

## Embracing New Technologies, Adopting New Business Models



## Exploding and Interconnected Digital Universe



# Cyber impacts have been increasing in size, scope

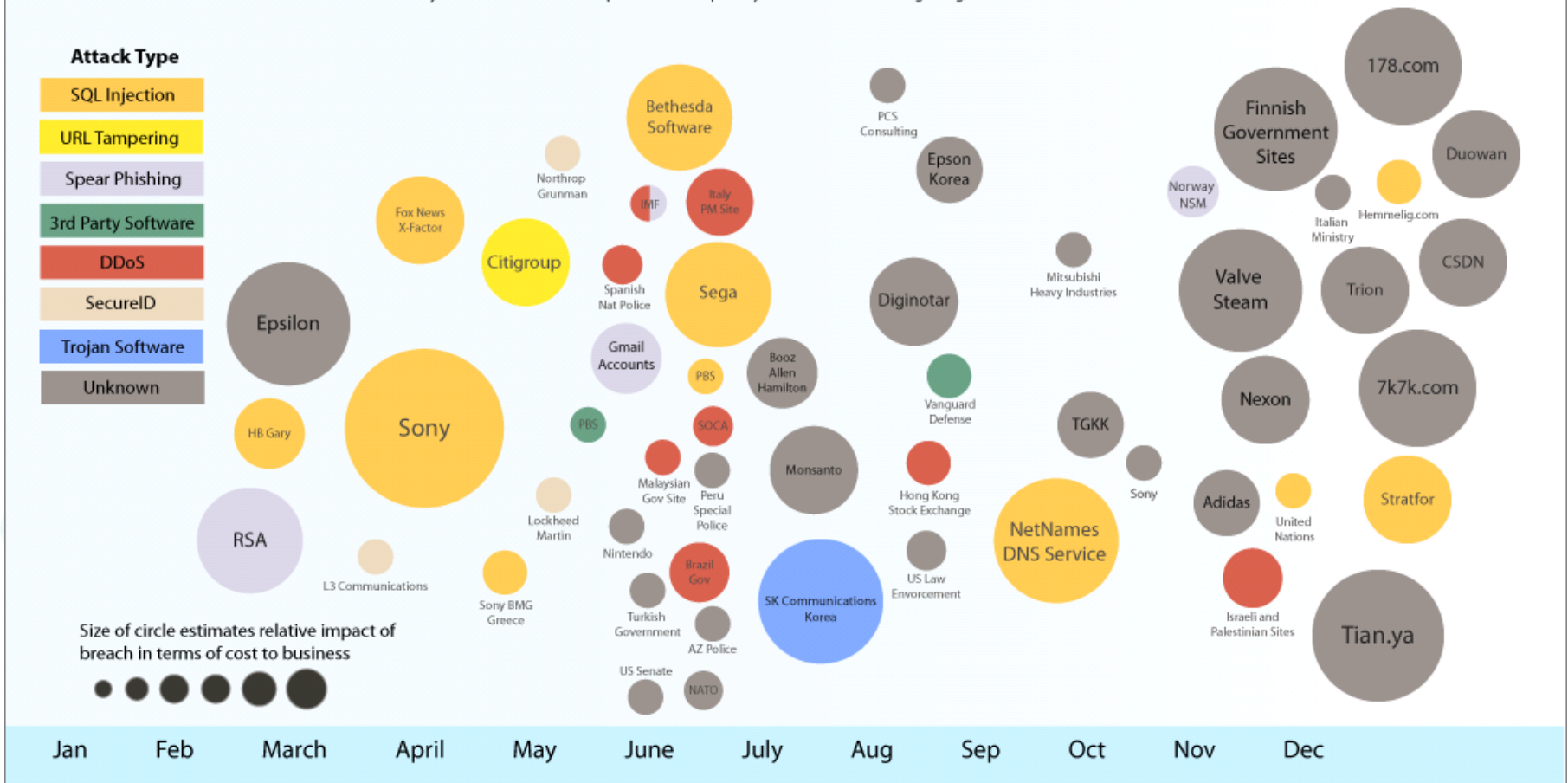


2011 Sampling of Security Breaches by Attack Type, Time and Impact

Cyber security is now considered "board level" issue...

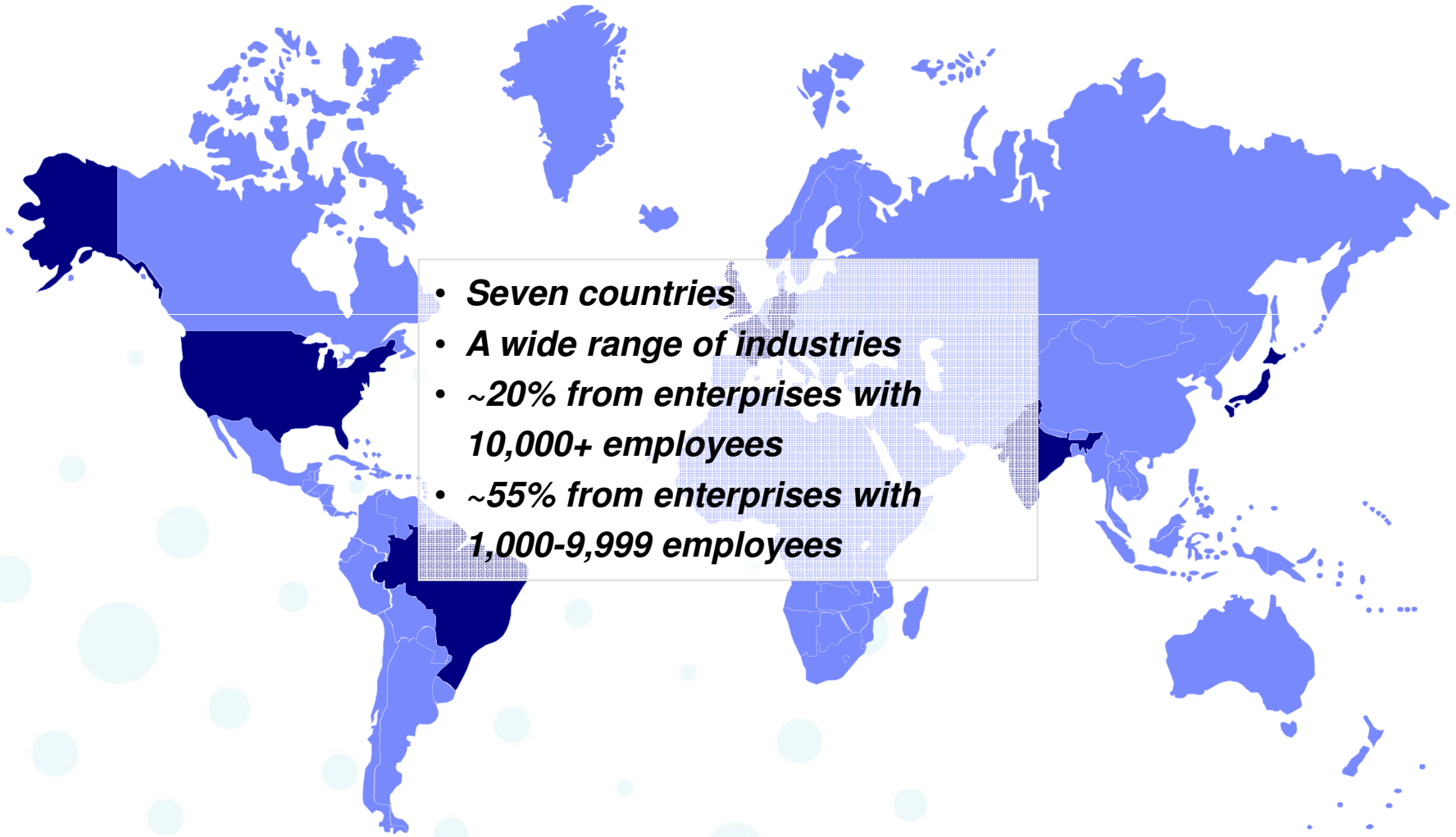
### 2011 Sampling of Security Incidents by Attack Type, Time and Impact

conjecture of relative breach impact is based on publicly disclosed information regarding leaked records and financial losses





To obtain a global snapshot of security leaders' strategies and approaches, we asked 138 security leaders in...



- *Seven countries*
- *A wide range of industries*
- *~20% from enterprises with 10,000+ employees*
- *~55% from enterprises with 1,000-9,999 employees*



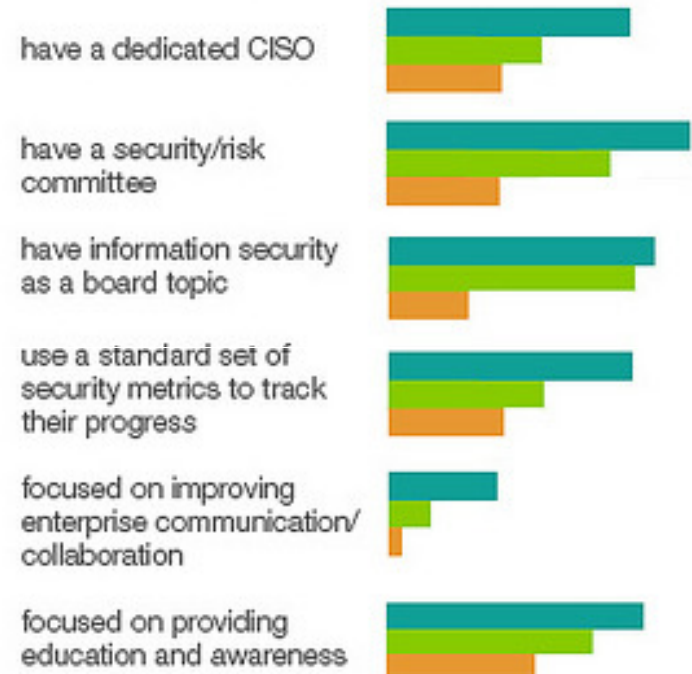


# IBM CISO study revealed critical shift in the role of Chief Information Security Executives globally



- Influencers (25%) => **RISK**
- Protectors (47%) => **COMPLIANCE**
- Responders (28%) => **CRISIS**

## How they differ



Building a business case: According to Gartner, average security spend = **5-9%** of overall IT budget. The more mature, the less they spend.



# Unfortunately, security skills to help manage heightened security risks are hard to find

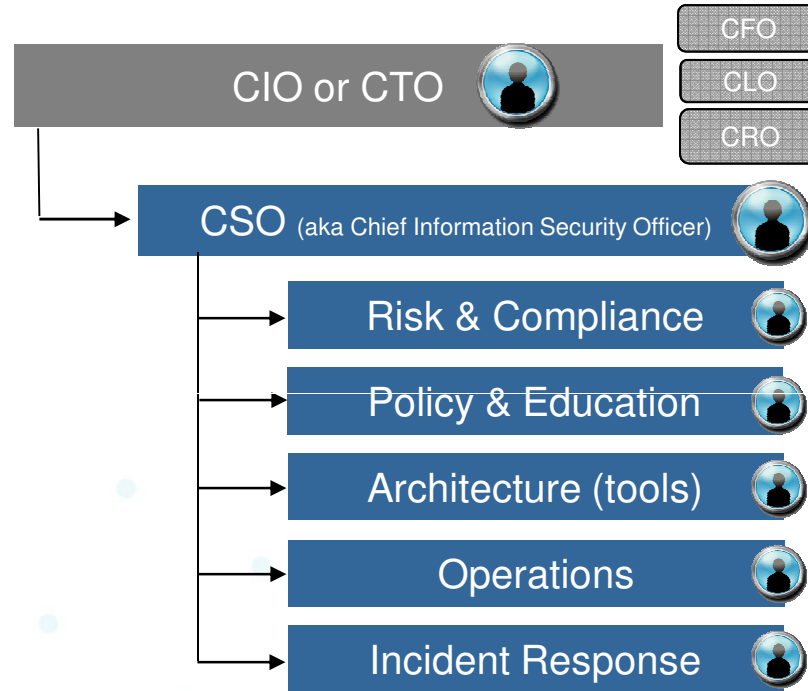
58%

are unable to find people with the right skills

66%

struggle with an understaffed IT team

FORRESTER



**81% of CISO functions** are re-organizing or have been re-organized within the last 6 months. Changes include increased scope, change in reporting line.

Source: Corporate Executive. Board, IREC Study, July 2012



## Security leaders must assume a business leadership position and dispel the idea that information security is a technology support function

### **Responders can move beyond their tactical focus by:**

- Establishing a dedicated security leadership role (like a CISO), assembling a security and risk committee, and measuring progress
- Automating routine security processes to devote more time and resources to security innovation

### **Protectors can make security more of a strategic priority by:**

- Investing more of their budgets on reducing future risks
- Aligning information security initiatives to broader enterprise priorities
- Learning from and collaborating with a network of security peers

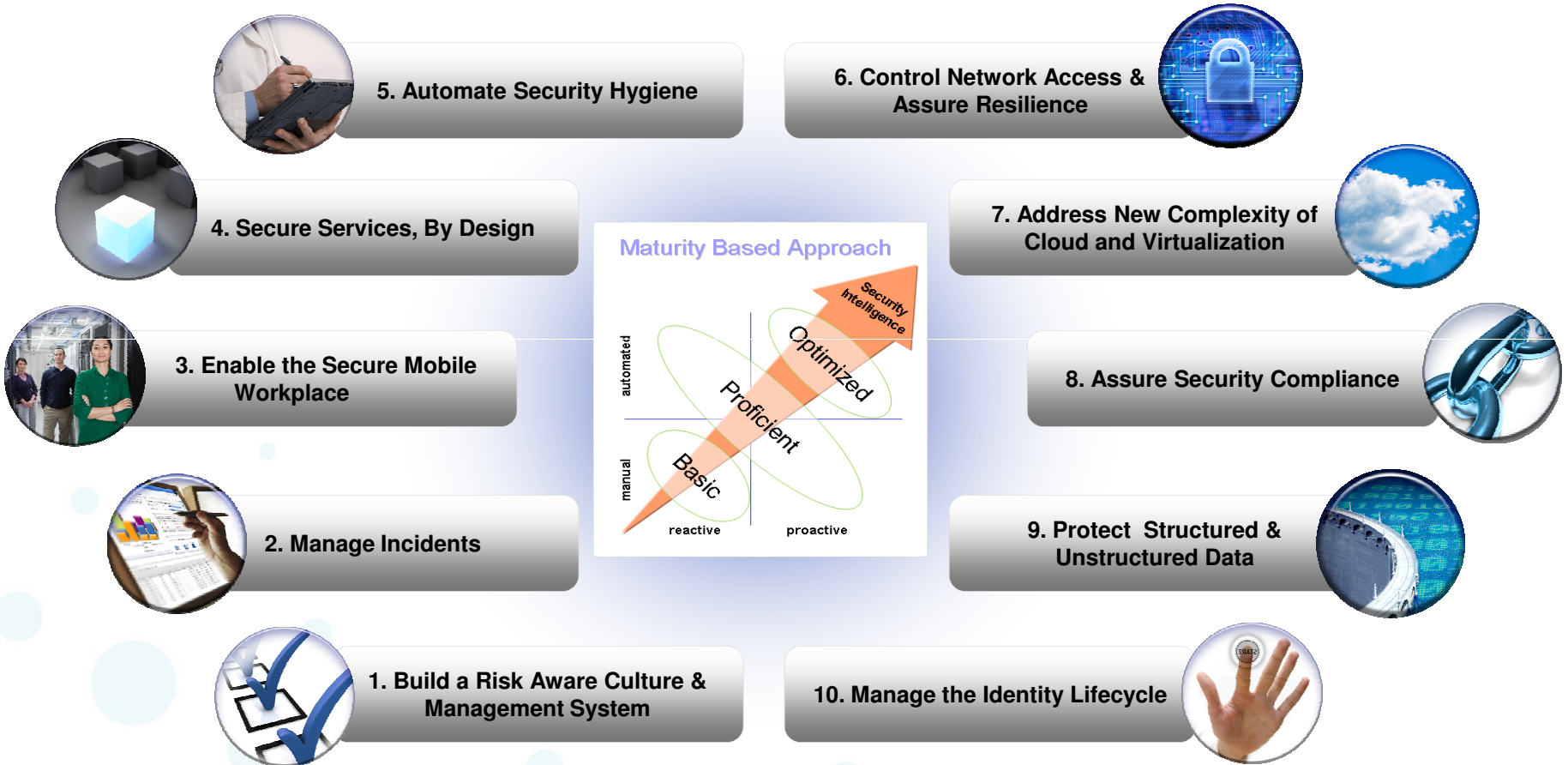
### **Influencers can continue to innovate and advance their security approaches by:**

- Strengthening communication, education and business leadership skills to cultivate a more risk-aware culture
- Using insights from metrics and data analysis to identify high-value improvement areas

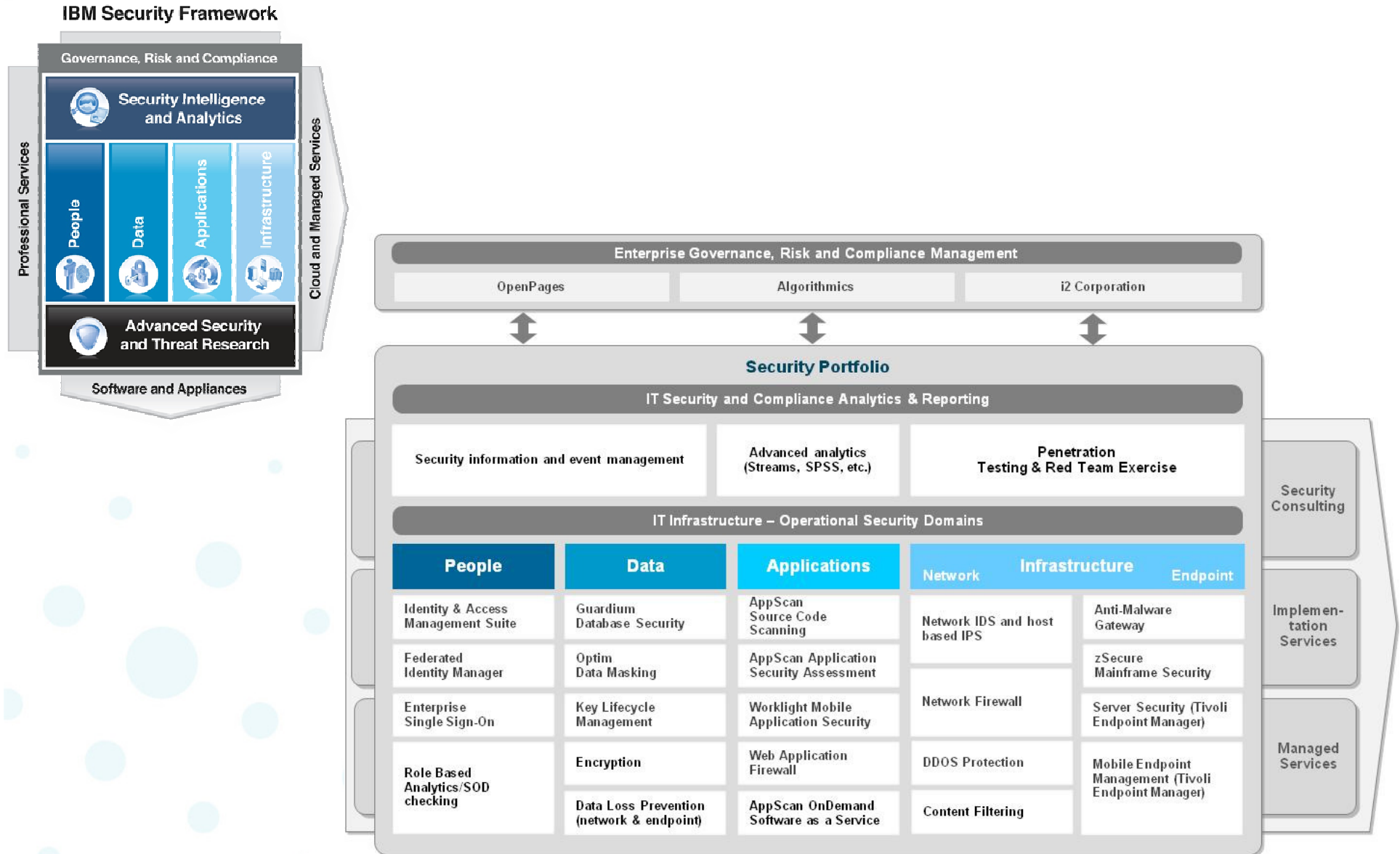




# 10 Essential Practices – Providing Security Defense in Depth



# Putting it all together – The Security Framework





## An Italian Company, Sirti has chosen IBM Security Intelligence

### CHI SIAMO

Sirti è la società italiana leader nel settore dell'ingegneria e dell'impiantistica di rete. Sirti offre soluzioni integrate per l'installazione, la costruzione e la manutenzione nei mercati delle Telecomunicazioni, dei Trasporti, dell'Energia e Infrastrutture, anche operanti nel settore ICT.



### DATI PRINCIPALI

90	ANNI DI ESPERIENZA
4.100	DIPENDENTI
3.000	UNITA' OPERATIVE
20	GRUPPI OPERATIVI
18	REGIONI CON PRESENZA SIRTI



Release Agosto 2012



## An Italian Company, Sirti has chosen IBM Security Intelligence

Sirti has chosen QRadar SIEM which provides actionable and comprehensive insight for managing risks and threats from protection and detection through remediation

SIM/SEM

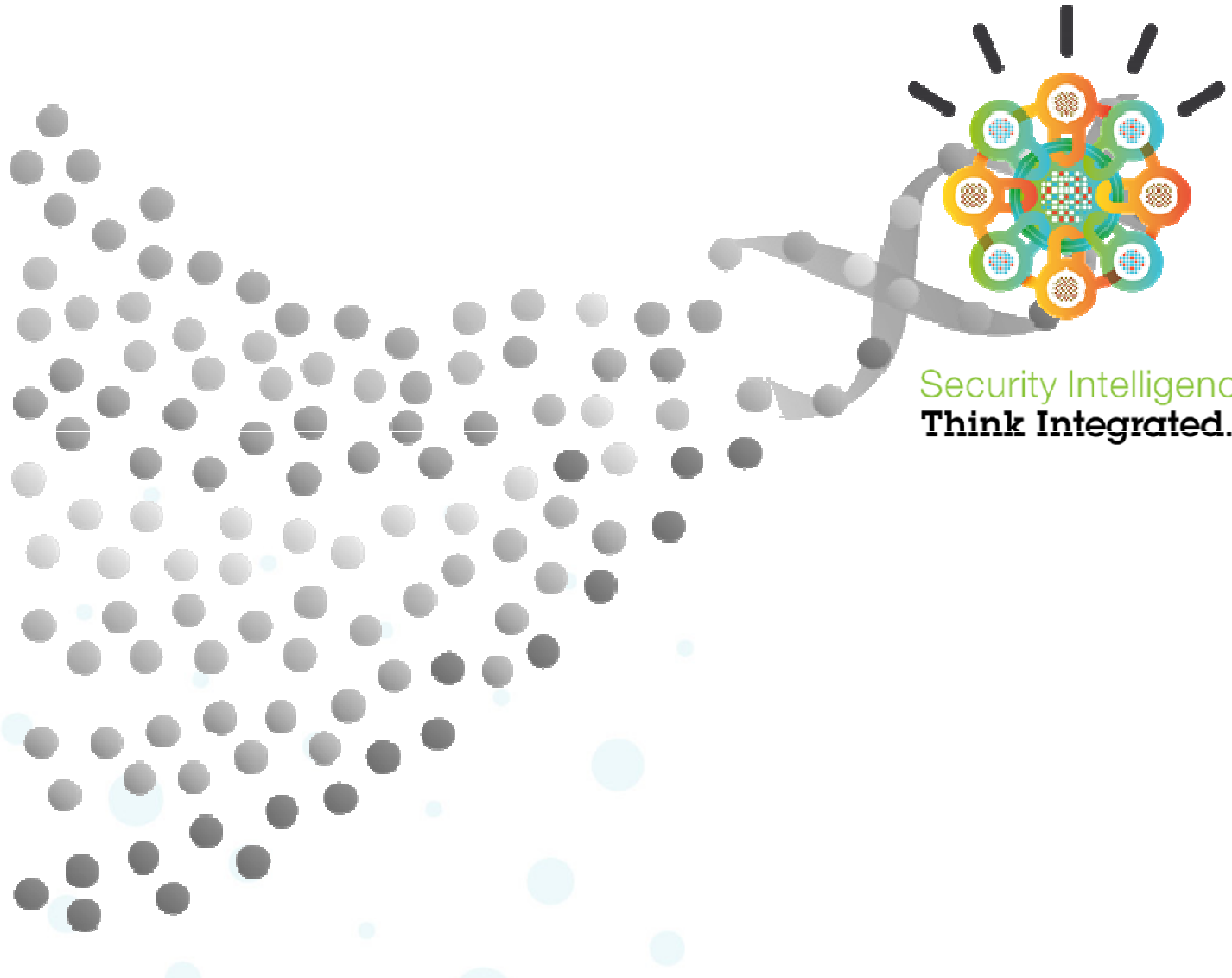
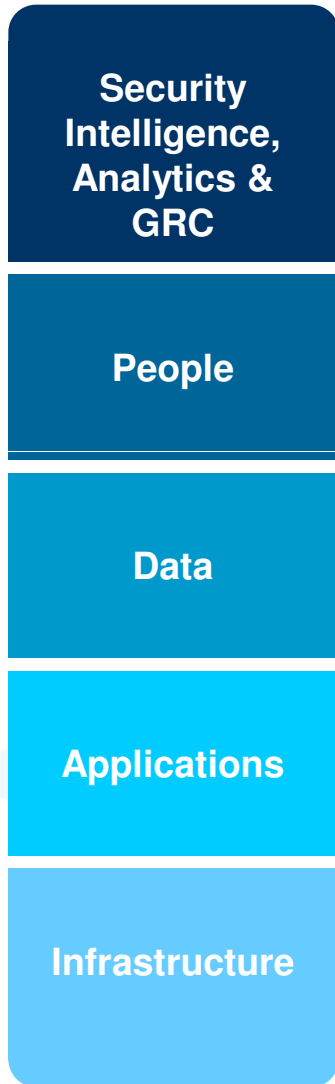


- Integrated log, cyber threat, risk and compliance management
- Sophisticated event analytics
- Asset profiling and flow analytics

- Detect external threats and attacks in real-time via advanced analytics
- Consolidate silos of network and security information to gain a single view across the enterprise.
- Detect potential insider threats (theft, fraud, malicious activity).
- Lower the costs of managing audits and maintaining compliance with the full set of applicable regulations and policies.
- Minimize the possibility of regulatory non-compliance.



# Intelligent solutions provide the DNA to secure a Smarter Planet



Security Intelligence.  
**Think Integrated.**